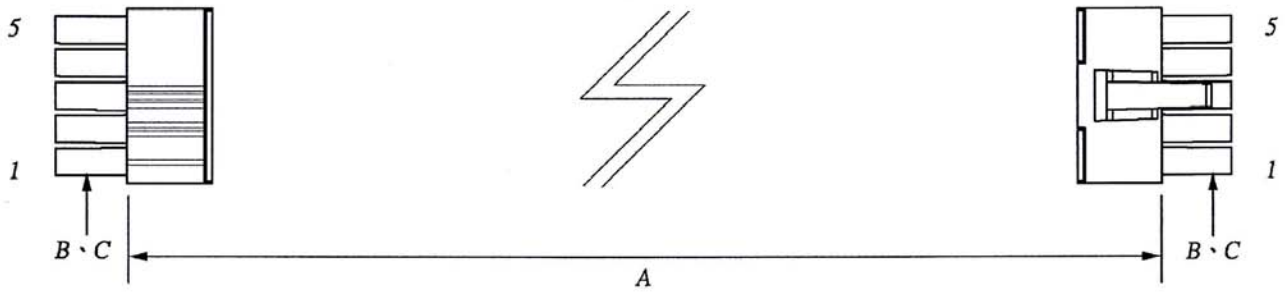
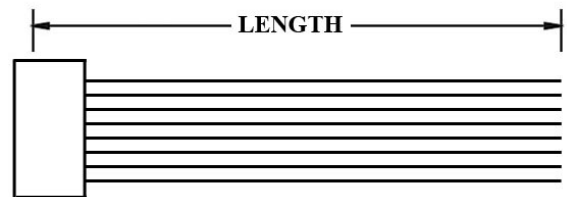
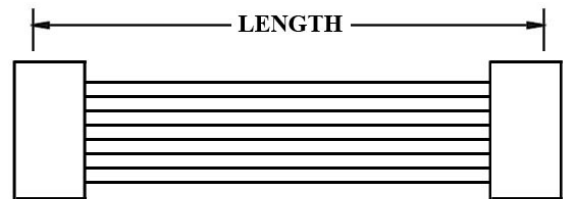
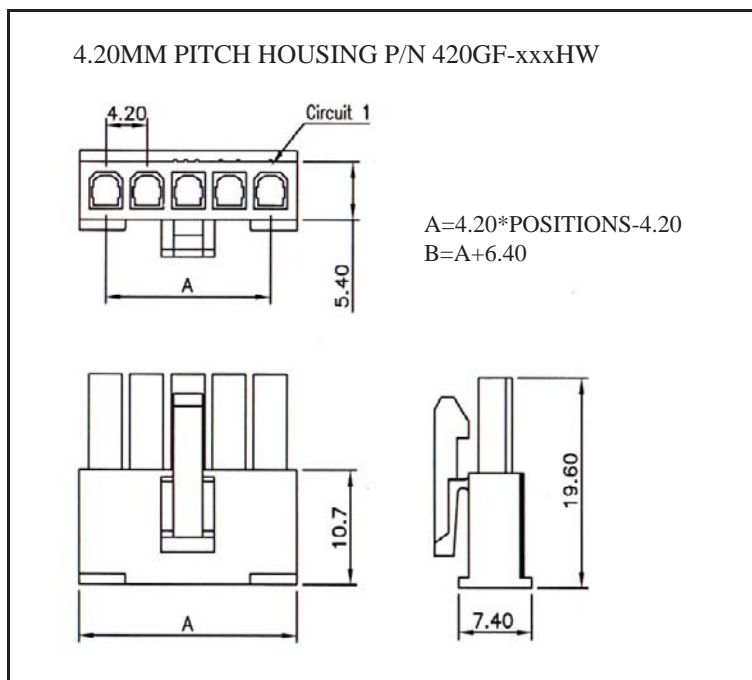


## WIRE HARNESS CABLE WITH 2\*4.20MM PITCH CRIMPED POWER HOUSINGS



K420GF



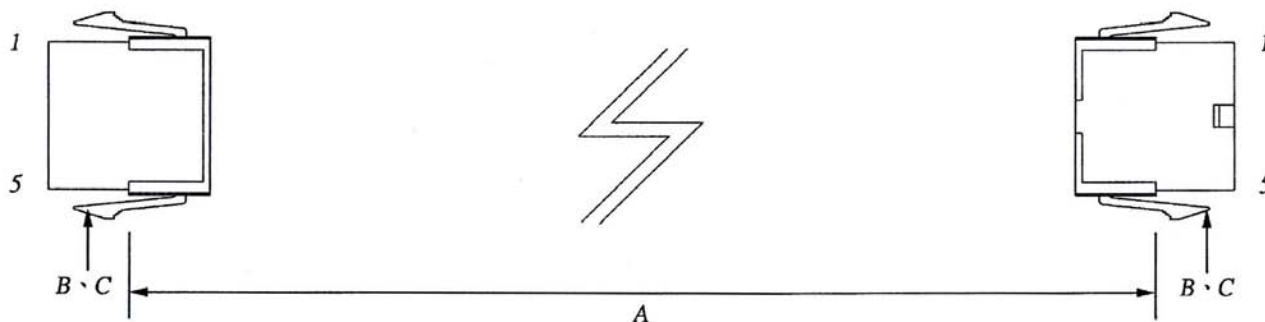
### ORDERING INFORMATION:

P/N K xxxxxx xx - xx C M

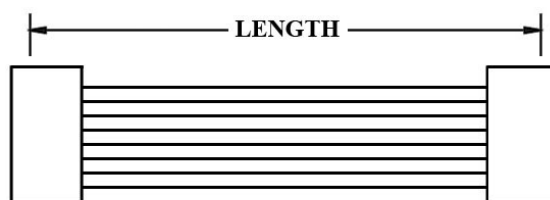
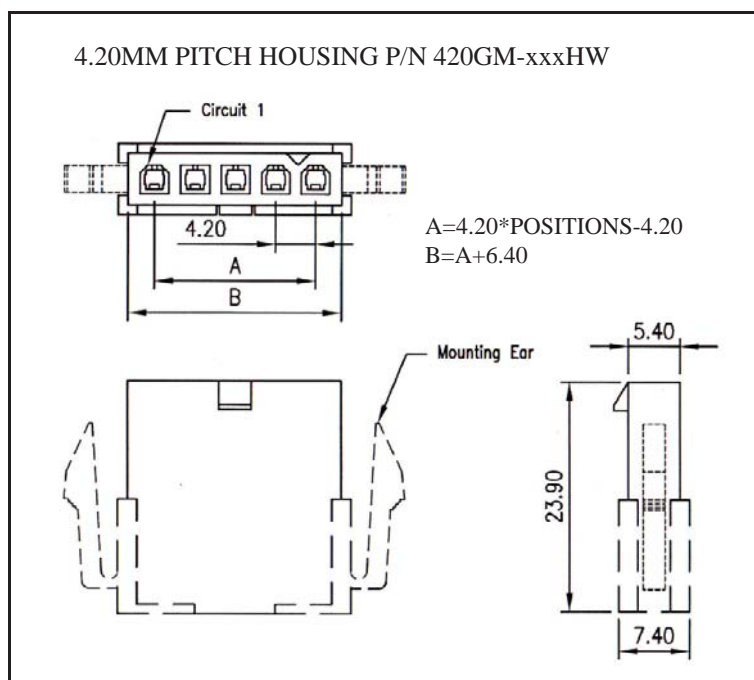
1            2            3

1. HOUSING TYPE AT 2 ENDS:  
 "420GF" 4.20MM PITCH SINGLE ROW HOUSING TO HOUSING (WIRING 1:1)  
 "420G1" DITTO, BUT SAME DIRECTION OF CONTACTS AT 2 ENDS (WIRING 1:N)  
 "420GT" DITTO, BUT HOUSING TO 3MM TINNED END
2. NO. OF CONTACTS:  
 02, 03, 04, 05, 06
3. LENGTH IN CM (CENTIMETERS)

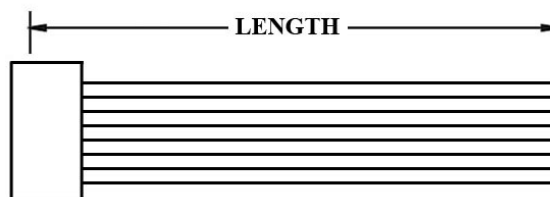
## WIRE HARNESS CABLE WITH 2\*4.20MM PITCH CRIMPED POWER HOUSINGS



K420GM



K420G2



K420GU

### ORDERING INFORMATION:

P/N K xxxxxx xx - xx C M

1. HOUSING TYPE AT 2 ENDS:

"420GM" 4.20MM PITCH SINGLE ROW HOUSING TO HOUSING (WIRING 1:1)

"420G2" DITTO, BUT SAME DIRECTION OF CONTACTS AT 2 ENDS (WIRING 1:N)

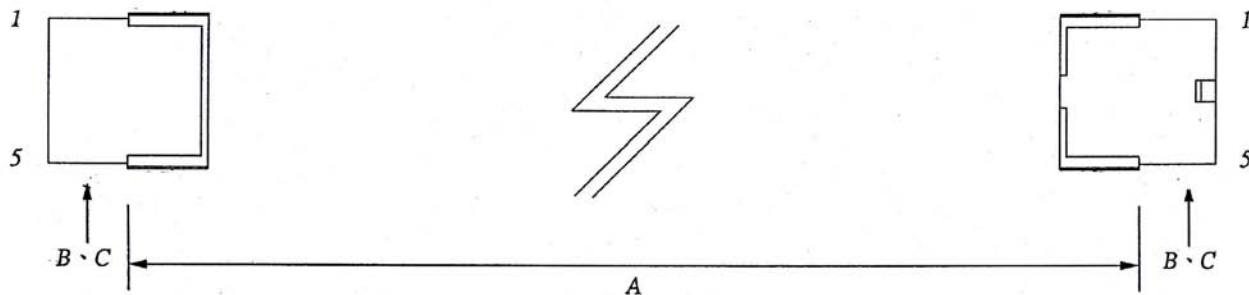
"420GU" DITTO, BUT HOUSING TO 3MM TINNED END

2. NO. OF CONTACTS:

02, 03, 04, 05, 06

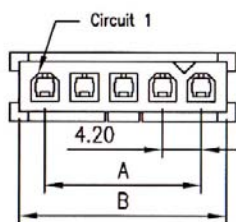
3. LENGTH IN CM (CENTIMETERS)

## WIRE HARNESS CABLE WITH 2\*4.20MM PITCH CRIMPED POWER HOUSINGS



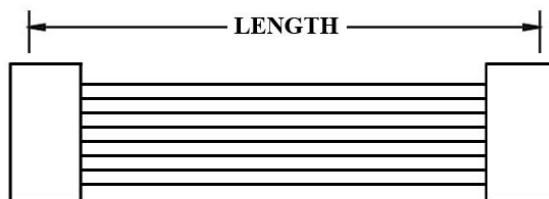
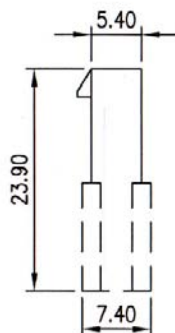
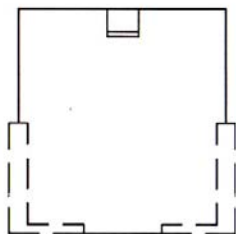
K420GN

4.20MM PITCH HOUSING P/N 420GN-xxxHW

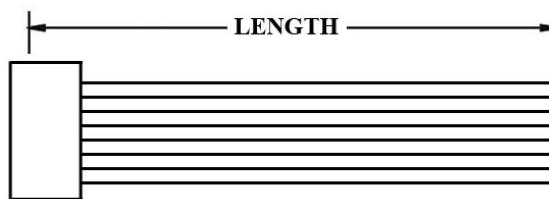


$$A = 4.20 * \text{POSITIONS} / 2 - 4.20$$

$$B = A + 5.40$$



K420G3



K420GV

### ORDERING INFORMATION:

P/N K 1 2 3 XXXXXX - XX C M

1. HOUSING TYPE AT 2 ENDS:

"420GN" 4.20MM PITCH SINGLE ROW HOUSING TO HOUSING (WIRING 1:1)

"420G3" DITTO, BUT SAME DIRECTION OF CONTACTS AT 2 ENDS (WIRING 1:N)

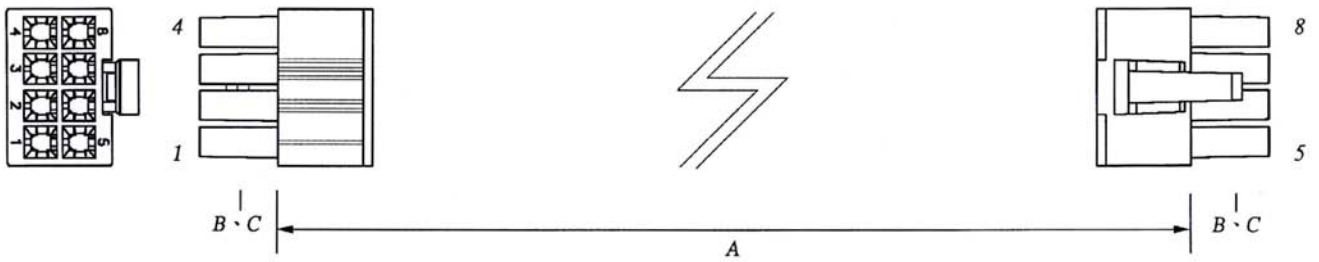
"420GV" DITTO, BUT HOUSING TO 3MM TINNED END

2. NO. OF CONTACTS:

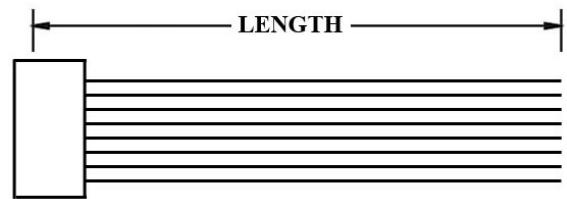
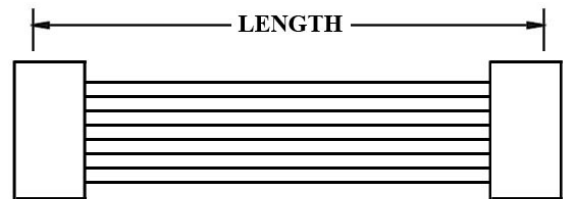
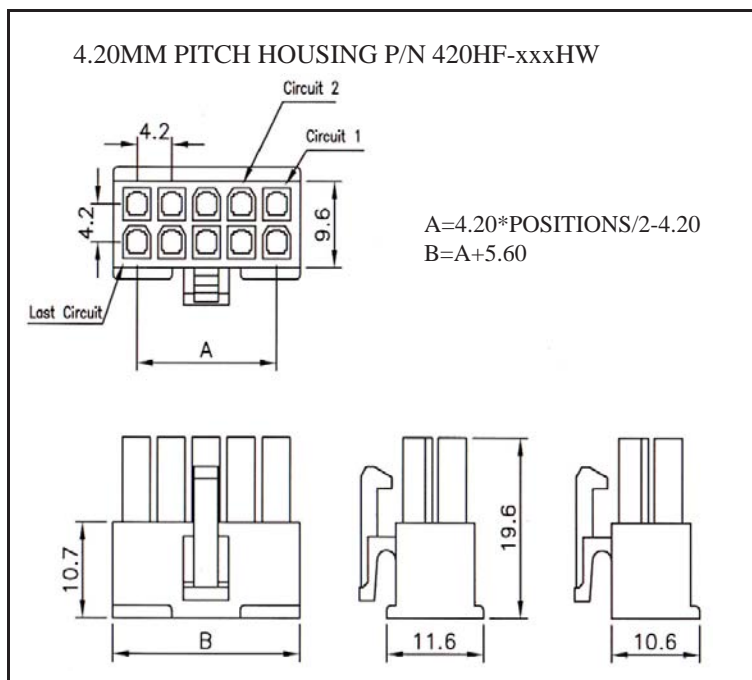
02, 03, 04, 05, 06

3. LENGTH IN CM (CENTIMETERS)

# WIRE HARNESS CABLE WITH 2\*4.20MM PITCH CRIMPED POWER HOUSINGS



K420HF

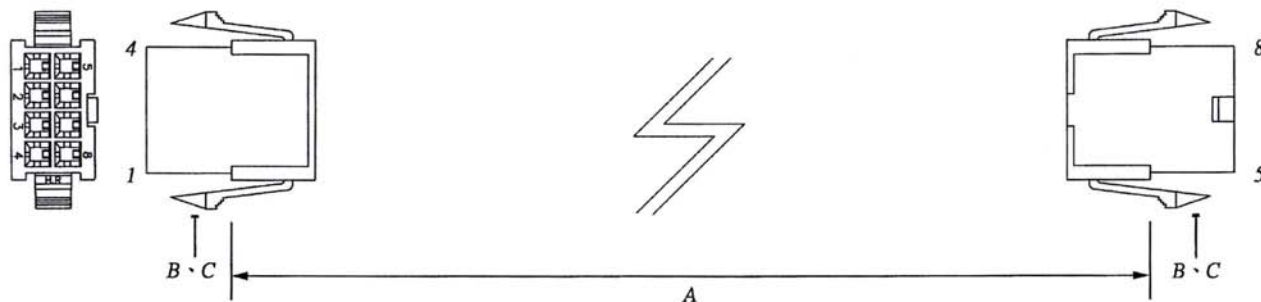


## ORDERING INFORMATION:

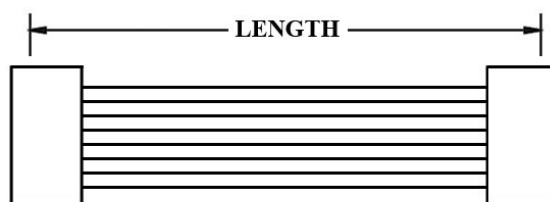
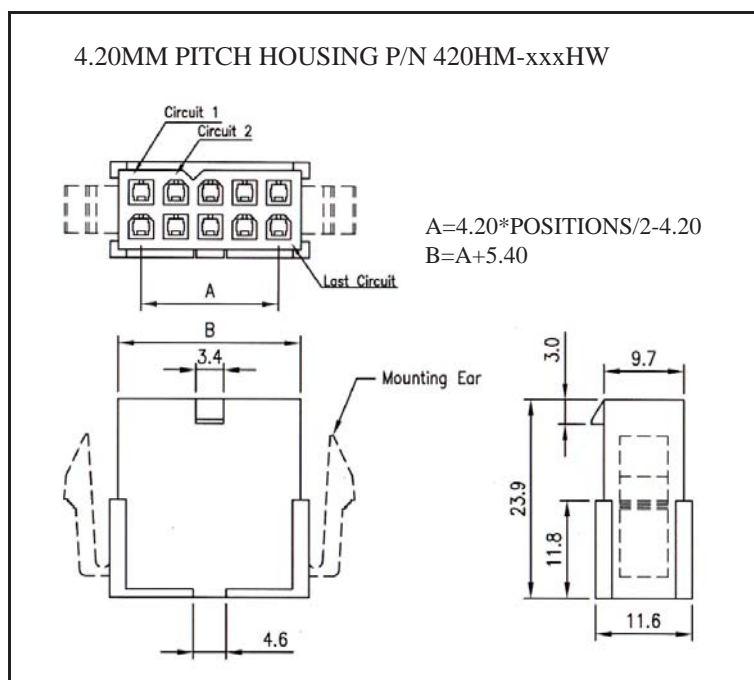
P/N K 1 2 3 CM

1. HOUSING TYPE AT 2 ENDS:  
 "420HF" 4.20MM PITCH DOUBLE ROW HOUSING TO HOUSING (WIRING 1:1)  
 "420H1" DITTO, BUT SAME DIRECTION OF CONTACTS AT 2 ENDS (WIRING 1:N)  
 "420HT" DITTO, BUT HOUSING TO 3MM TINNED END
2. NO. OF CONTACTS:  
 02~24
3. LENGTH IN CM (CENTIMETERS)

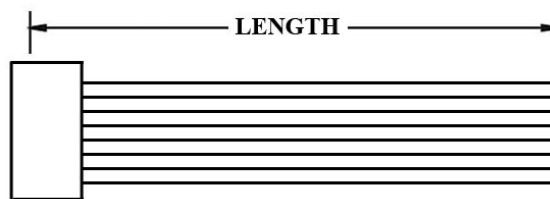
## WIRE HARNESS CABLE WITH 2\*4.20MM PITCH CRIMPED POWER HOUSINGS



K420HM



K420H3



K420HV

### ORDERING INFORMATION:

P/N K xxxxxx xx C M

1. HOUSING TYPE AT 2 ENDS:

"420HM" 4.20MM PITCH DOUBLE ROW HOUSING TO HOUSING (WIRING 1:1)

"420H3" DITTO, BUT SAME DIRECTION OF CONTACTS AT 2 ENDS (WIRING 1:N)

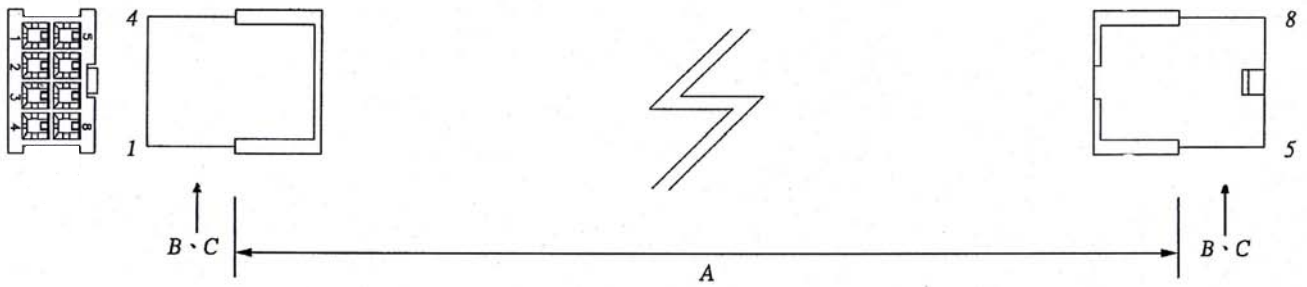
"420HV" DITTO, BUT HOUSING TO 3MM TINNED END

2. NO. OF CONTACTS:

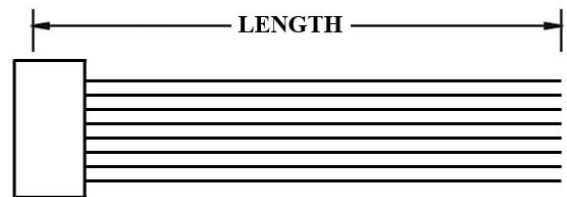
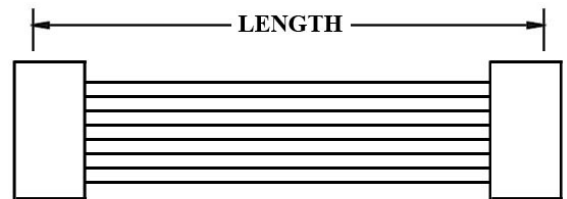
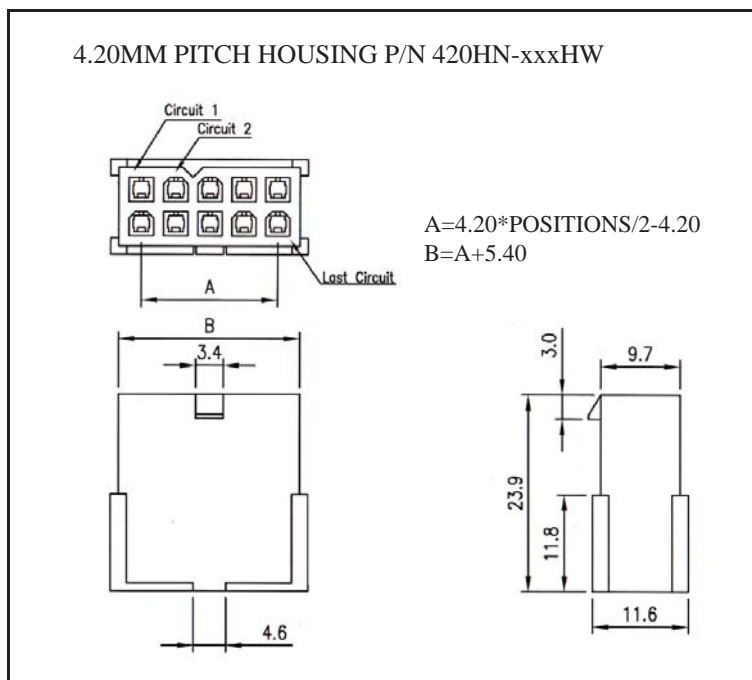
02~24

3. LENGTH IN CM (CENTIMETERS)

# WIRE HARNESS CABLE WITH 2\*4.20MM PITCH CRIMPED POWER HOUSINGS



K420HN



## ORDERING INFORMATION:

P/N K xxxxxx xx - xx C M

1            2            3

1. HOUSING TYPE AT 2 ENDS:  
 "420HN" 4.20MM PITCH DOUBLE ROW HOUSING TO HOUSING (WIRING 1:1)  
 "420H4" DITTO, BUT SAME DIRECTION OF CONTACTS AT 2 ENDS (WIRING 1:N)  
 "420HW" DITTO, BUT HOUSING TO 3MM TINNED END
2. NO. OF CONTACTS:  
 02~24
3. LENGTH IN CM (CENTIMETERS)