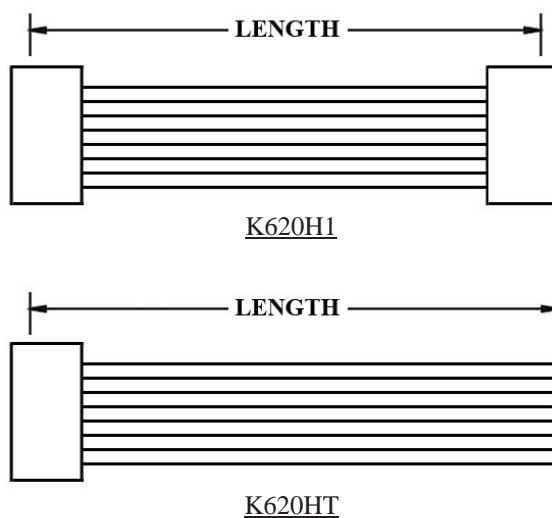
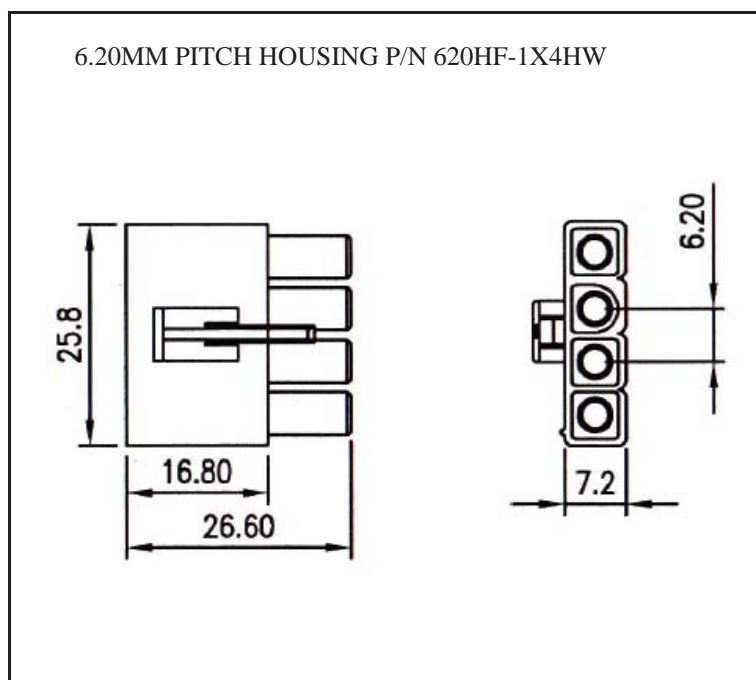


WIRE HARNESS CABLE WITH 2*6.20MM PITCH WIRE-TO-WIRE CRIMPED HOUSINGS (F1)



ORDERING INFORMATION:

P/N K xxxxxx xxx - xx C M

1 2 3

1. HOUSING TYPE AT 2 ENDS:

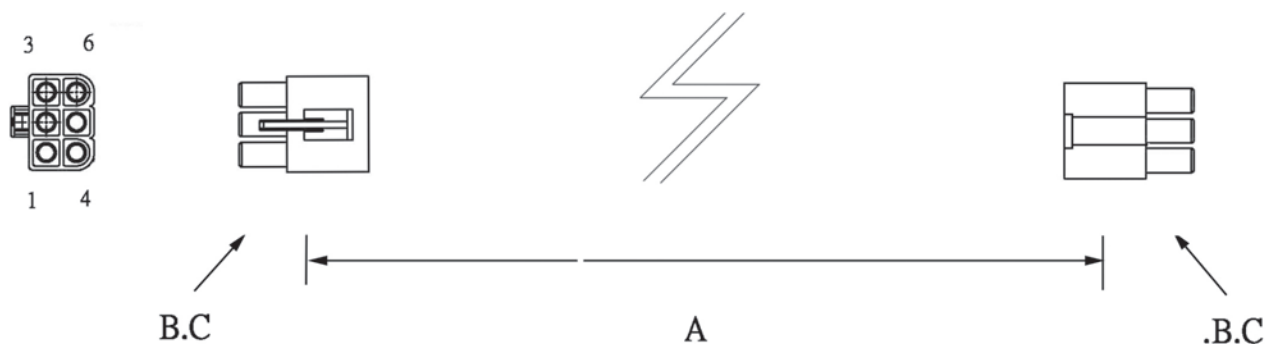
- "620HF" 6.20MM PITCH Ø2.00MM WIRE HOUSING TO HOUSING (WIRING 1:1)
- "620H1" DITTO, BUT SAME DIRECTION OF CONTACTS AT 2 ENDS (WIRING 1:N)
- "620HT" DITTO, BUT HOUSING TO 3MM TINNED END

2. NO. OF CONTACTS:

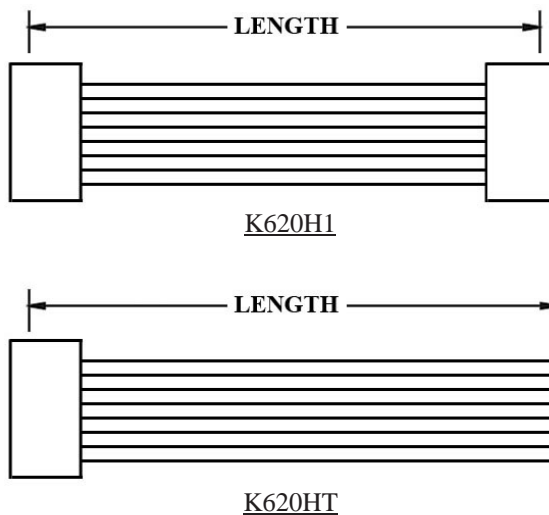
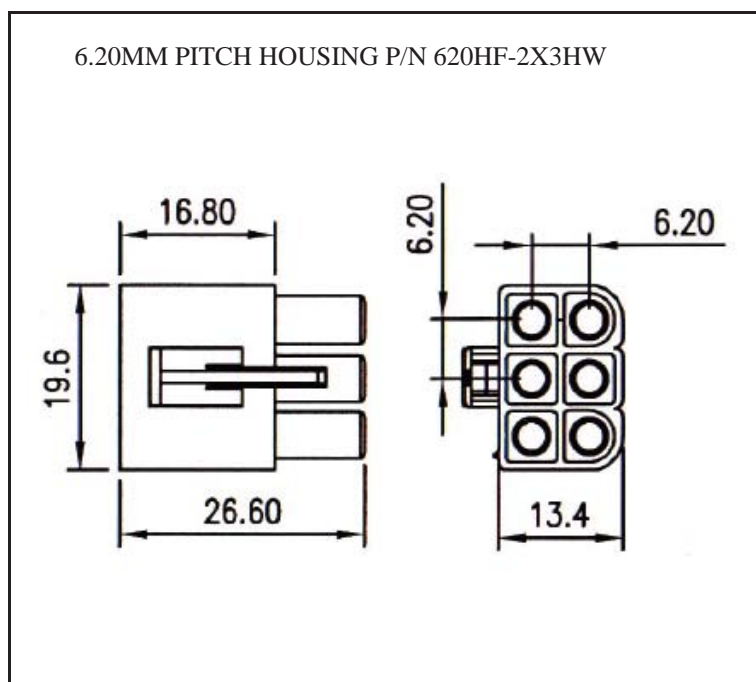
- 1X1, 1X2, 1X3, 1X4, 2X2, 2X3, 3X3, 3X4, 3X5

3. LENGTH IN CM (CENTIMETERS)

WIRE HARNESS CABLE WITH 2*6.20MM PITCH WIRE-TO-WIRE CRIMPED HOUSINGS (F2)



K620HF2X3



ORDERING INFORMATION:

P/N K xxxxxx xxx - xx C M

1 2 3

1. HOUSING TYPE AT 2 ENDS:

- "620HF" 6.20MM PITCH Ø2.00MM WIRE HOUSING TO HOUSING (WIRING 1:1)
- "620H1" DITTO, BUT SAME DIRECTION OF CONTACTS AT 2 ENDS (WIRING 1:N)
- "620HT" DITTO, BUT HOUSING TO 3MM TINNED END

2. NO. OF CONTACTS:

- 1X1, 1X2, 1X3, 1X4, 2X2, 2X3, 3X3, 3X4, 3X5

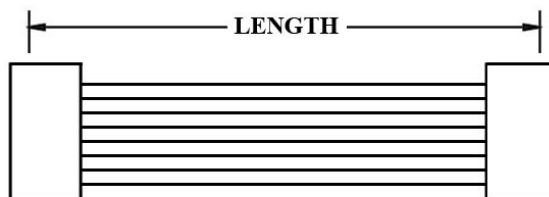
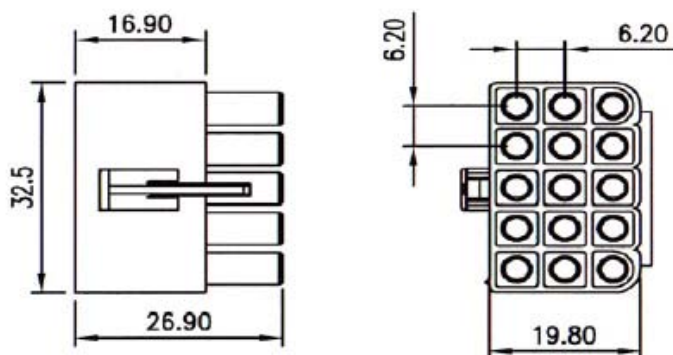
3. LENGTH IN CM (CENTIMETERS)

WIRE HARNESS CABLE WITH 2*6.20MM PITCH WIRE-TO-WIRE CRIMPED HOUSINGS (F3)

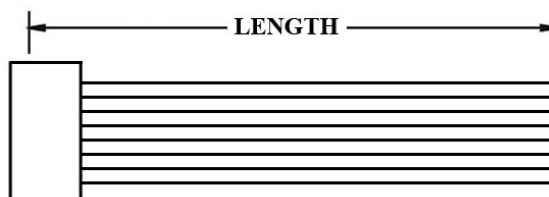


K620HF3X5

6.20MM PITCH HOUSING P/N 620HF-3X5HW



K620H1



K620HT

ORDERING INFORMATION:

P/N K xxxxxx xxx - xx C M

1. HOUSING TYPE AT 2 ENDS:

"620HF" 6.20MM PITCH Ø2.00MM WIRE HOUSING TO HOUSING (WIRING 1:1)

"620H1" DITTO, BUT SAME DIRECTION OF CONTACTS AT 2 ENDS (WIRING 1:N)

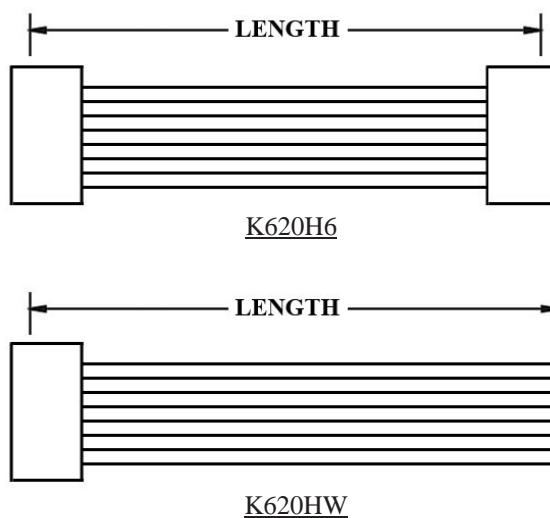
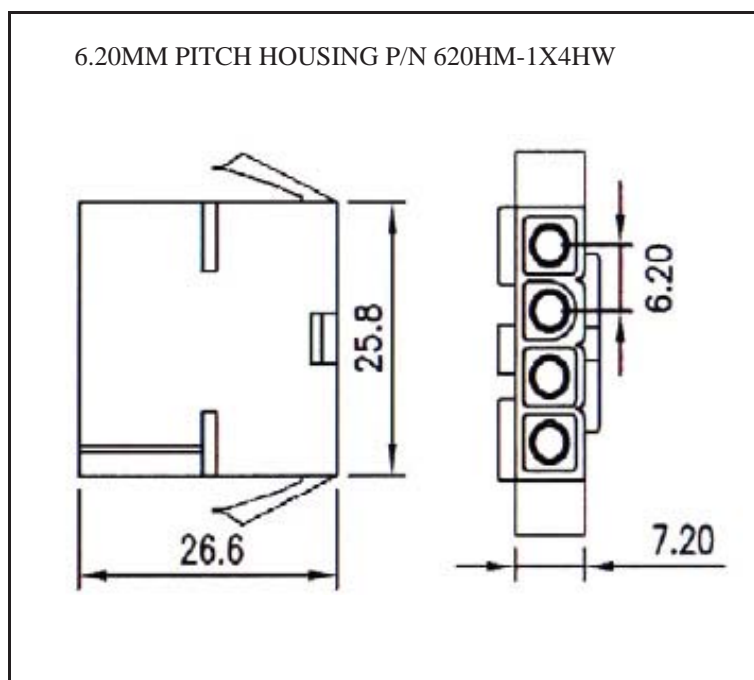
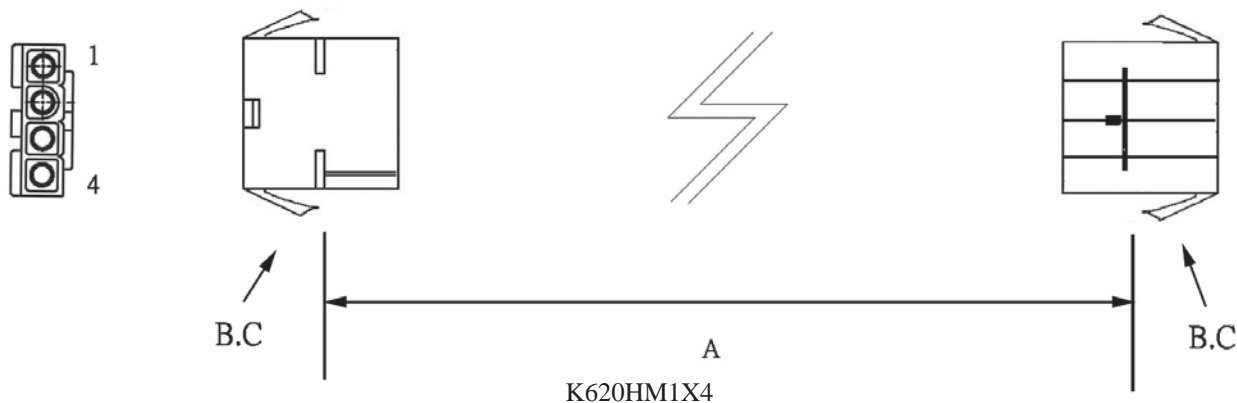
"620HT" DITTO, BUT HOUSING TO 3MM TINNED END

2. NO. OF CONTACTS:

1X1, 1X2, 1X3, 1X4, 2X2, 2X3, 3X3, 3X4, 3X5

3. LENGTH IN CM (CENTIMETERS)

WIRE HARNESS CABLE WITH 2*6.20MM PITCH WIRE-TO-WIRE CRIMPED HOUSINGS (M1)



ORDERING INFORMATION:

P/N **K** 1 2 3 **C M**

1. HOUSING TYPE AT 2 ENDS:

"620HM" 6.20MM PITCH Ø2.00MM WIRE HOUSING TO HOUSING (WIRING 1:1)

"620H6" DITTO, BUT SAME DIRECTION OF CONTACTS AT 2 ENDS (WIRING 1:N)

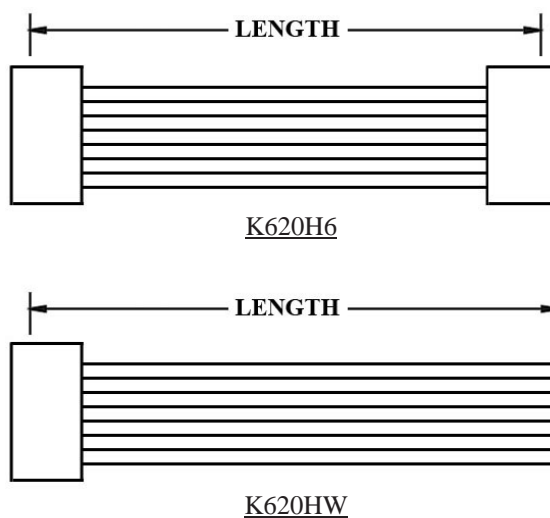
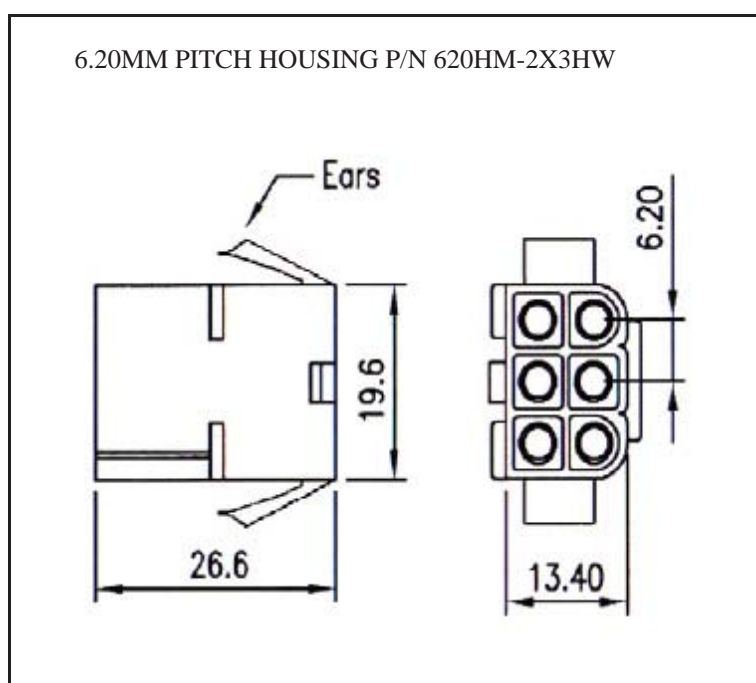
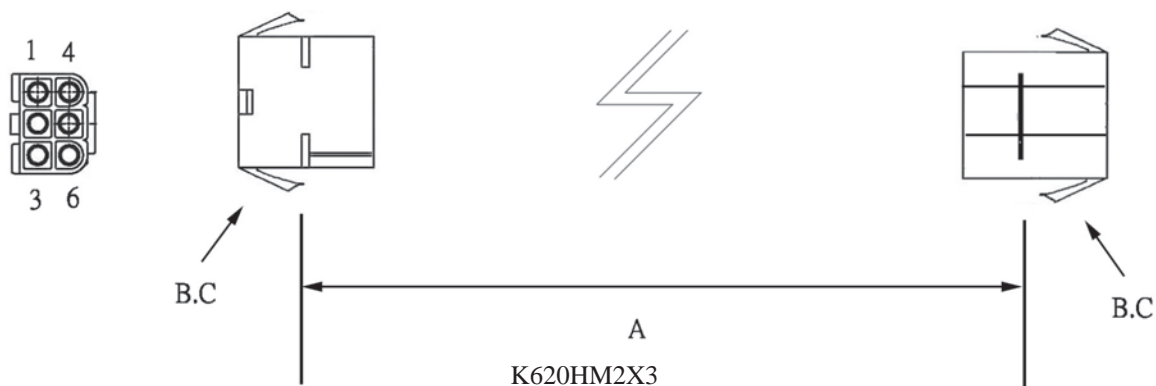
"620HW" DITTO, BUT HOUSING TO 3MM TINNED END

2. NO. OF CONTACTS:

1X1, 1X2, 1X3, 1X4, 2X2, 2X3, 3X3, 3X4, 3X5

3. LENGTH IN CM (CENTIMETERS)

WIRE HARNESS CABLE WITH 2*6.20MM PITCH WIRE-TO-WIRE CRIMPED HOUSINGS (M2)



ORDERING INFORMATION:

P/N **K** 1 2 3 **C M**

1. HOUSING TYPE AT 2 ENDS:

"620HM" 6.20MM PITCH Ø2.00MM WIRE HOUSING TO HOUSING (WIRING 1:1)

"620H6" DITTO, BUT SAME DIRECTION OF CONTACTS AT 2 ENDS (WIRING 1:N)

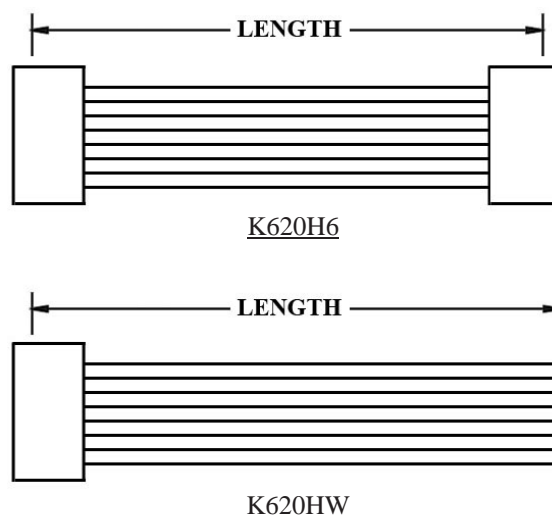
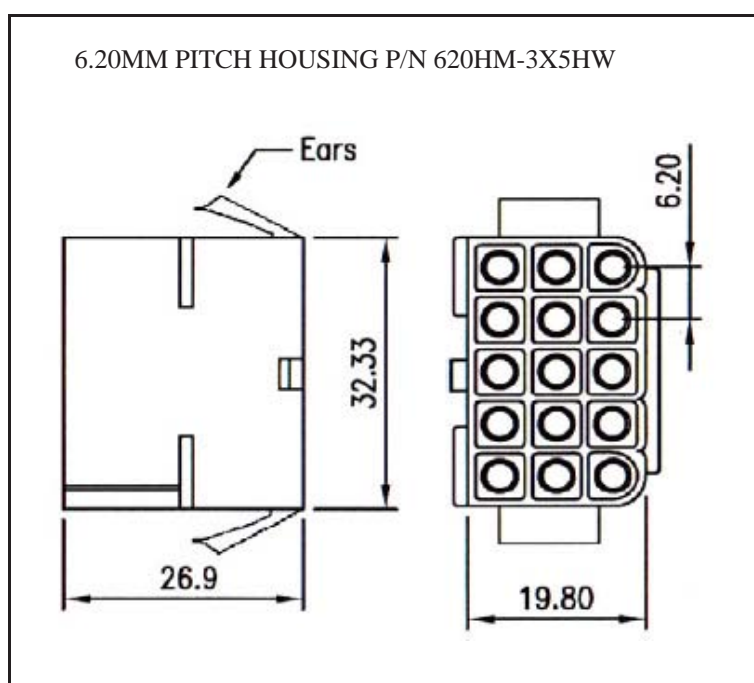
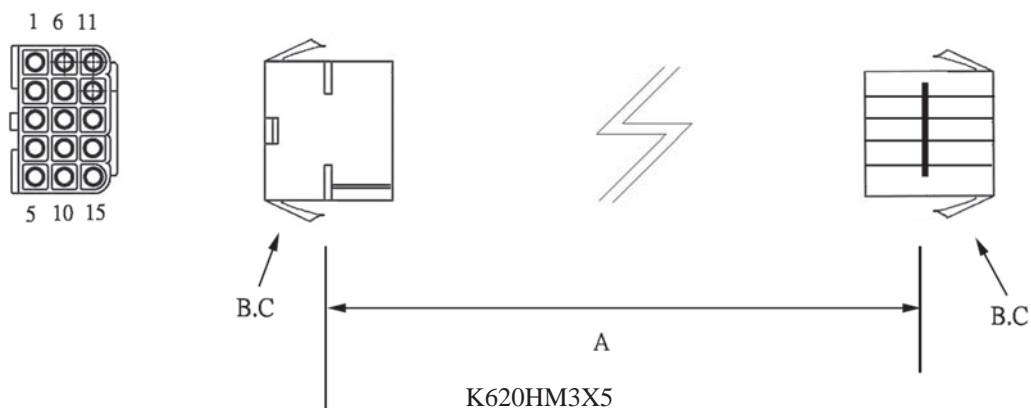
"620HW" DITTO, BUT HOUSING TO 3MM TINNED END

2. NO. OF CONTACTS:

1X1, 1X2, 1X3, 1X4, 2X2, 2X3, 3X3, 3X4, 3X5

3. LENGTH IN CM (CENTIMETERS)

WIRE HARNESS CABLE WITH 2*6.20MM PITCH WIRE-TO-WIRE CRIMPED HOUSINGS (M3)



ORDERING INFORMATION:

P/N **K** 1 2 3 **C M**

1. HOUSING TYPE AT 2 ENDS:

"620HM" 6.20MM PITCH Ø2.00MM WIRE HOUSING TO HOUSING (WIRING 1:1)

"620H6" DITTO, BUT SAME DIRECTION OF CONTACTS AT 2 ENDS (WIRING 1:N)

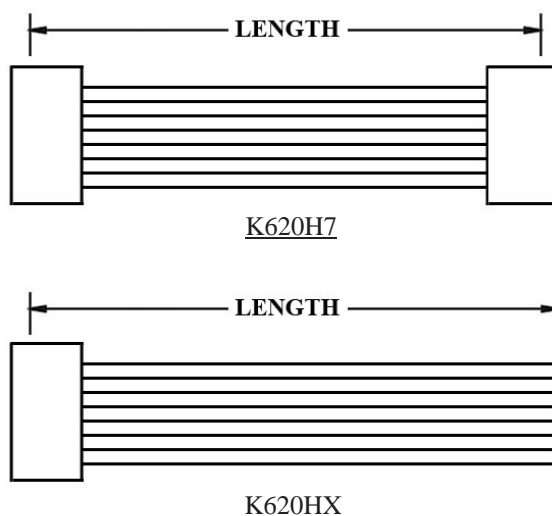
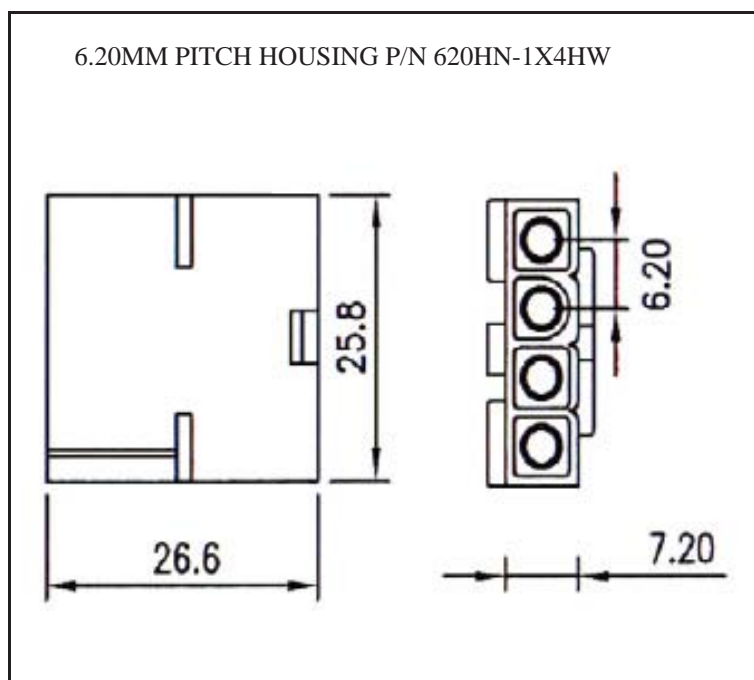
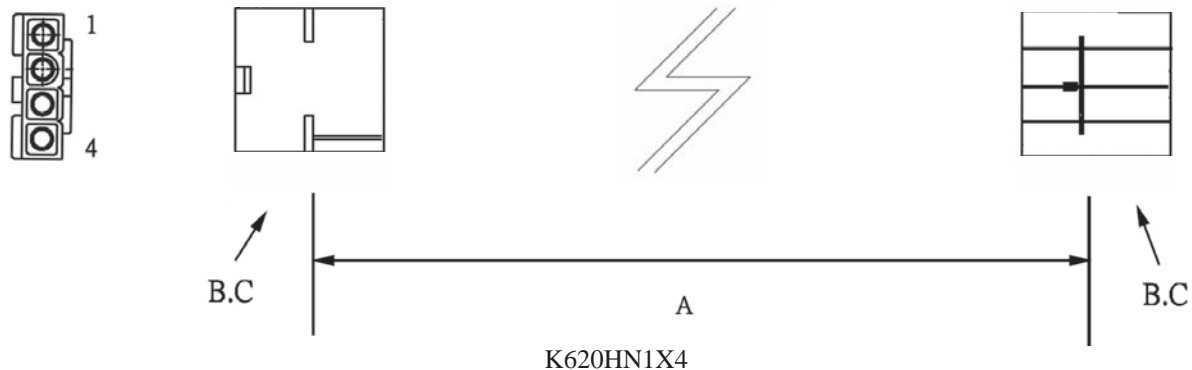
"620HW" DITTO, BUT HOUSING TO 3MM TINNED END

2. NO. OF CONTACTS:

1X1, 1X2, 1X3, 1X4, 2X2, 2X3, 3X3, 3X4, 3X5

3. LENGTH IN CM (CENTIMETERS)

WIRE HARNESS CABLE WITH 2*6.20MM PITCH WIRE-TO-WIRE CRIMPED HOUSINGS (M4)



ORDERING INFORMATION:

P/N **K** **x****x****x****x****x****x** - **x****x** C M

1 2 3

1. HOUSING TYPE AT 2 ENDS:

"620HN" 6.20MM PITCH Ø2.00MM WIRE HOUSING TO HOUSING (WIRING 1:1)

"620H7" DITTO, BUT SAME DIRECTION OF CONTACTS AT 2 ENDS (WIRING 1:N)

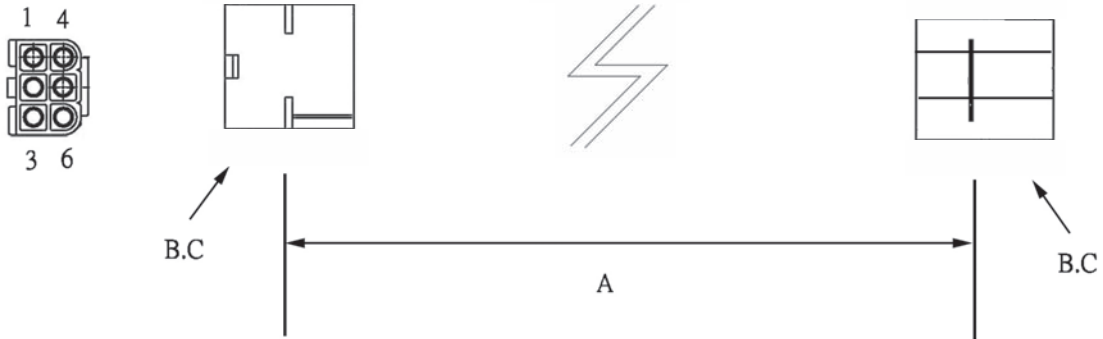
"620HX" DITTO, BUT HOUSING TO 3MM TINNED END

2. NO. OF CONTACTS:

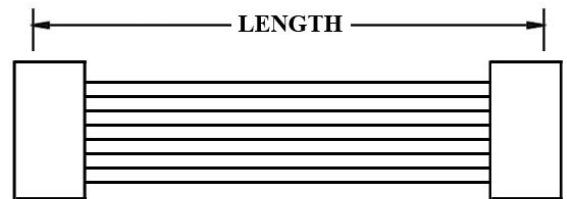
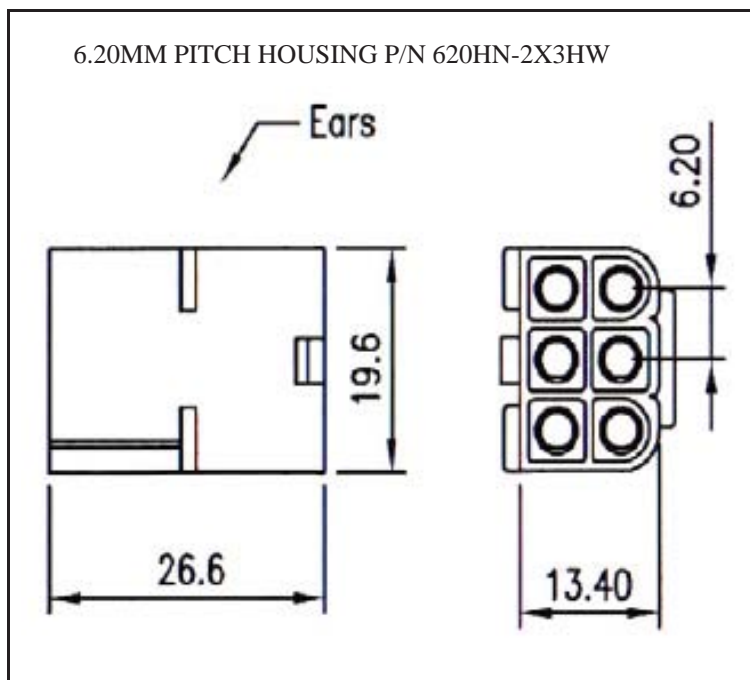
1X1, 1X2, 1X3, 1X4, 2X2, 2X3, 3X3, 3X4, 3X5

3. LENGTH IN CM (CENTIMETERS)

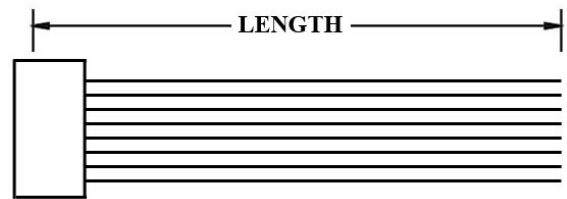
WIRE HARNESS CABLE WITH 2*6.20MM PITCH WIRE-TO-WIRE CRIMPED HOUSINGS (M5)



K620HN2X3



K620H7



K620HX

ORDERING INFORMATION:

P/N K xxxxxx xx - xx C M

1 2 3

1. HOUSING TYPE AT 2 ENDS:

"620HN" 6.20MM PITCH Ø2.00MM WIRE HOUSING TO HOUSING (WIRING 1:1)

"620H7" DITTO, BUT SAME DIRECTION OF CONTACTS AT 2 ENDS (WIRING 1:N)

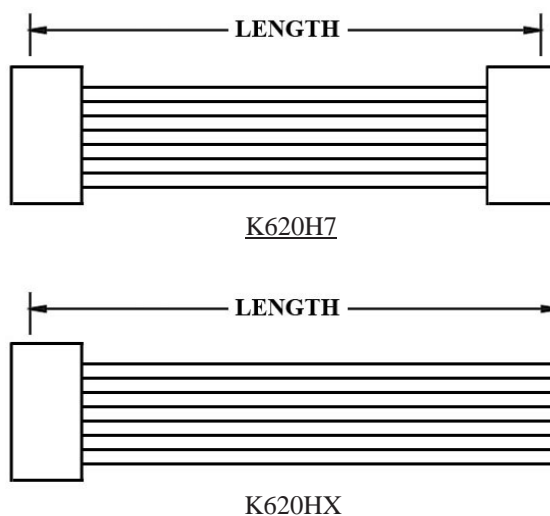
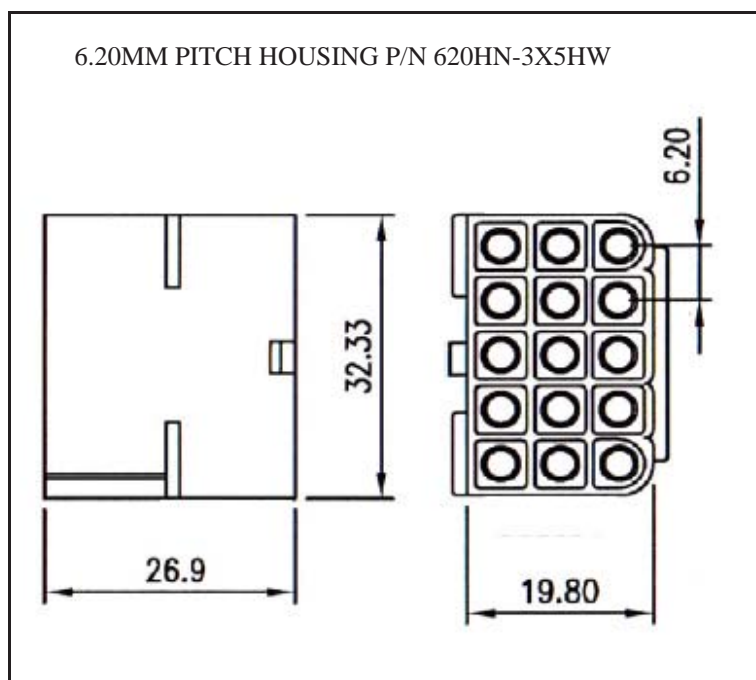
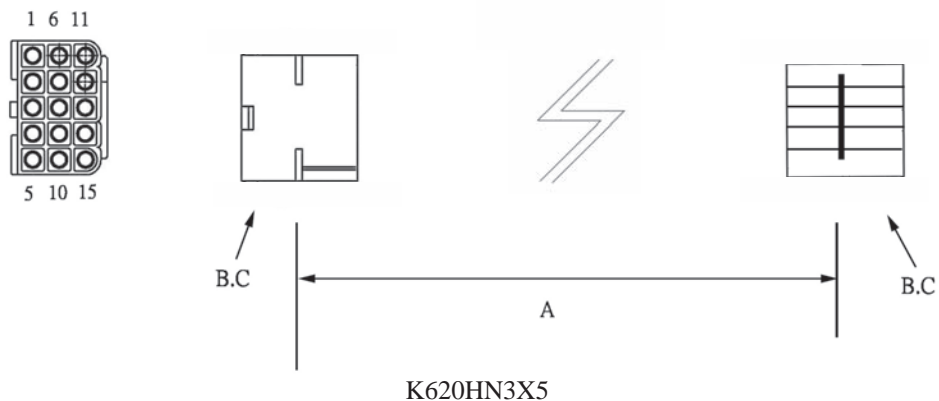
"620HX" DITTO, BUT HOUSING TO 3MM TINNED END

2. NO. OF CONTACTS:

1X1, 1X2, 1X3, 1X4, 2X2, 2X3, 3X3, 3X4, 3X5

3. LENGTH IN CM (CENTIMETERS)

WIRE HARNESS CABLE WITH 2*6.20MM PITCH WIRE-TO-WIRE CRIMPED HOUSINGS (M6)



ORDERING INFORMATION:

P/N K xxxxxx xx - xx C M

1 2 3

1. HOUSING TYPE AT 2 ENDS:

"620HN" 6.20MM PITCH Ø2.00MM WIRE HOUSING TO HOUSING (WIRING 1:1)

"620H7" DITTO, BUT SAME DIRECTION OF CONTACTS AT 2 ENDS (WIRING 1:N)

"620HX" DITTO, BUT HOUSING TO 3MM TINNED END

2. NO. OF CONTACTS:

1X1, 1X2, 1X3, 1X4, 2X2, 2X3, 3X3, 3X4, 3X5

3. LENGTH IN CM (CENTIMETERS)