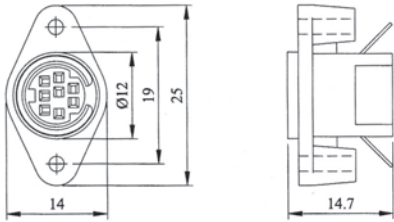
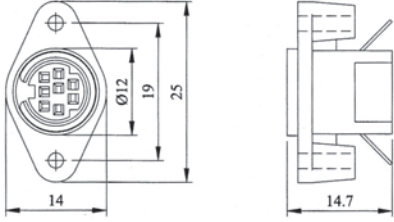
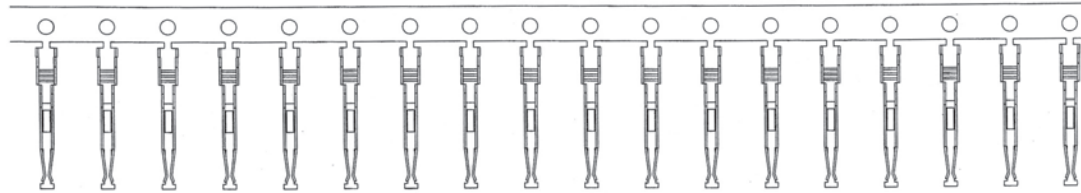


MINI DIN SOCKET CRIMP TYPE

		<p>SPECIFICATIONS</p> <ol style="list-style-type: none"> Rating: 100VAC 1A (max.) 12VDC 2A (max.) Dielectric withstanding voltage: 500VAC, 60Hz for 1 minute Insulation resistance (initial): 100MΩ (min.) at 500V DC Contact resistance (initial): 30mΩ (max.) at AC 100mA (max.) 1 KHz Insertion & Extraction force: Initial : 4.5kgs (max.) Extraction force: 0.9 to 3.0kgs <p>MATERIALS</p> <ol style="list-style-type: none"> Insulator: PBT(Black, UL94V-0) Contact: Phosphor bronze. Metal Shell: Copper alloy <p>All materials must be RoHS compliant.</p>
<p>QUICK LOCK TYPE (HOUSING + EARTH TERMINAL) 7277-xx</p>	<p>STANDARD TYPE (HOUSING + EARTH TERMINAL) 7276-xx</p>	



**CONTACT TERMINAL
7276-16KS
Min. order Q'ty : 16,000 pcs / reel**

ARRANGEMENT OF CONTACTS						
NO OF CONTACTS	3	4	5	6	7	8

ORDERING INFORMATION:

HOUSING & EARTH TERMINAL

P/N 7 2 $\frac{xx}{1}$ - $\frac{xx}{2}$

- CONNECTOR TYPE:
"76" STANDARD TYPE
"77" QUICK LOCK TYPE
- NO. OF CONTACTS:
03, 04, 05, 06, 07, 08

CONTACT TERMINAL

P/N 7 2 7 6 - 1 6 K S

PU=16.000PCS/REEL

NOTE: ACCEPTS 7276 & 7277 HOUSINGS

MINI DIN SOCKET STRAIGHT PCB MOUNT TYPE

		SPECIFICATIONS 1. Rating: 100VAC 1A (max.) 12VDC 2A (max.) 2. Dielectric withstanding voltage: 500VAC, 60Hz for 1 minute 3. Insulation resistance (initial): 100MΩ (min.) at 500V DC 4. Contact resistance (initial): 30mΩ (max.) at AC 100mA (max.) 1 KHz 5. Insertion & Extraction force: Initial : 4.5kgs (max.) Extraction force: 0.9 to 3.0kgs MATERIALS 1. Insulator: PBT(Black, UL94V-0) 2. Contact: Phosphor bronze. 3. Metal Shell: Copper alloy All materials must be RoHS compliant.			
QUICK LOCK TYPE 7235-xx	STANDARD TYPE 7272-xx				
SCREWTYPE 7273-xx	SCREW & LOCK TYPE 7274-xx				
PANEL MOUNT TYPE 7275-xx					
ARRANGEMENT OF CONTACTS					
NO OF CONTACTS	3	4	5	6	8
HOLE LAYOUT					

ORDERING INFORMATION:

P/N 7 2 $\frac{xx}{1}$ - $\frac{xx}{2}$

- CONNECTOR TYPE:
 "35" QUICK LOCK TYPE
 "72" STANDARD TYPE
 "73" SCREW TYPE
 "74" SCREW & LOCK TYPE
 "75" PANEL MOUNT TYPE(OONLY 7275-04 AVAILABLE)
- NO. OF CONTACTS:
 03, 04, 05, 06, 08
 NOTE: THE HOUSING COLOR IS BLACK.

MINI DIN SOCKET METAL & PLASTIC TYPES

		<p>SPECIFICATIONS</p> <ol style="list-style-type: none"> Rating: 100VAC 1A (max.) 12VDC 2A (max.) Dielectric withstanding voltage: 500VAC, 60Hz for 1 minute Insulation resistance (initial): 100MΩ (min.) at 500V DC Contact resistance (initial): 30mΩ (max.) at AC 100mA (max.) 1 KHz Insertion & Extraction force: Initial : 4.5kgs (max.) Extraction force: 0.9 to 3.0kgs <p>MATERIALS</p> <ol style="list-style-type: none"> Insulator: PBT(Black, UL94V-0) Contact: Phosphor bronze. Metal Shell: Copper alloy <p>All materials must be RoHS compliant.</p>				
<p>METAL TYPE 7231-xx</p>	<p>PLASTIC TYPE 7239-xx</p>					
<p>METAL TYPE 7220-xx</p>	<p>PLASTIC TYPE 7219-xx</p>					
<p>ARRANGEMENT OF CONTACTS</p>						
<p>NO OF CONTACTS</p>	<p>3</p>	<p>4</p>	<p>5</p>	<p>6</p>	<p>7</p>	<p>8</p>

ORDERING INFORMATION:

P/N 7 2 $\frac{xx}{1}$ - $\frac{xx}{2}$

1. CONNECTOR TYPE:

- "31" METAL TYPE L=38.55MM
- "20" METAL TYPE L=28.50MM
- "39" PLASTIC TYPE L=30.6MM
- "19" PLASTIC TYPE L=29.0MM

2. NO. OF CONTACTS:

- 03, 04, 05, 06, 07, 08

NOTE: THE HOUSING COLOR IS BLACK.

MINI DIN SOCKET UNSHIELDED TYPE

		<p>SPECIFICATIONS</p> <ol style="list-style-type: none"> Rating: 100VAC 1A (max.) 12VDC 2A (max.) Dielectric withstanding voltage: 500VAC, 60Hz for 1 minute Insulation resistance (initial): 100MΩ (min.) at 500V DC Contact resistance (initial): 30mΩ (max.) at AC 100mA (max.) 1 KHz Insertion & Extraction force: Initial : 4.5kgs (max.) Extraction force: 0.9 to 3.0kgs <p>MATERIALS</p> <ol style="list-style-type: none"> Insulator: PBT(Black, UL94V-0) Contact: Phosphor bronze. Metal Shell: Copper alloy <p>All materials must be RoHS compliant.</p>
7272-xxx	7255-xxx	

ARRANGEMENT OF CONTACTS						
NO OF CONTACTS	3	4	5	6	7	8
HOLE LAYOUT						

ORDERING INFORMATION:

P/N 72 $\frac{xx}{1}$ - $\frac{xxx}{2}$ $\frac{x}{3}$

- CONNECTOR TYPE:
"72" WITH STRAIGHT GROUNDING TERMINAL
"55" WITH KINKED GROUNDING TERMINAL
- NO. OF CONTACTS:
03, 04, 05, 06, 07, 08
- HOUSING COLOR:
"B" BLACK

MINI DIN SOCKET UNSHIELDED TYPE

				<p>SPECIFICATIONS</p> <p>1. Rating: 100VAC 1A (max.) 12VDC 2A (max.)</p> <p>2. Dielectric withstanding voltage: 500VAC, 60Hz for 1 minute</p> <p>3. Insulation resistance (initial): 100MΩ (min.) at 500V DC</p> <p>4. Contact resistance (initial): 30mΩ (max.) at AC 100mA (max.) 1 KHz</p> <p>5. Insertion & Extraction force: Initial : 4.5kgs (max.) Extraction force: 0.9 to 3.0kgs</p> <p>MATERIALS</p> <p>1. Insulator: PBT(Black, UL94V-0)</p> <p>2. Contact: Phosphor bronze.</p> <p>3. Metal Shell: Copper alloy</p> <p>All materials must be RoHS compliant.</p>			
7253-xxx		7254-xxx					
ARRANGEMENT OF CONTACTS							
NO OF CONTACTS	3	4	5	6	7	8	
HOLE LAYOUT							

ORDERING INFORMATION:

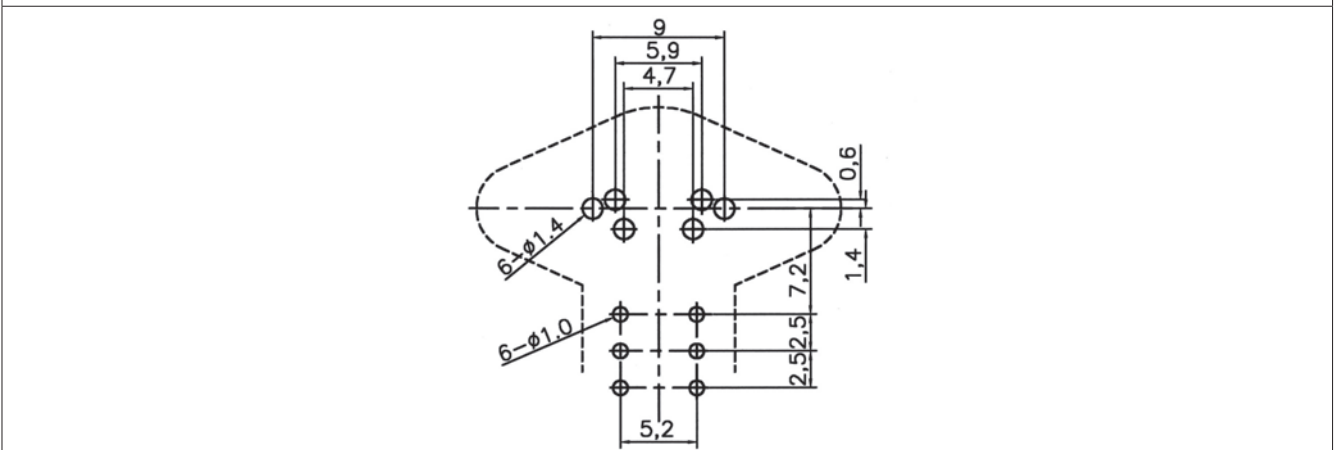
P/N 7 2 $\frac{xx}{1}$ - $\frac{xxx}{2}$ 3

1. CONNECTOR TYPE:
"53" WITH STRAIGHT GROUNDING TERMINAL
"54" WITH KINKED GROUNDING TERMINAL
2. NO. OF CONTACTS:
03, 04, 05, 06, 07, 08
3. HOUSING COLOR:
"B" BLACK

MINI DIN SOCKET WITH SWITCH

P/N	Dimension (m/m)
72A4-04	<p>Technical drawing of the Mini DIN socket with switch, showing front, side, and top views with dimensions. The front view shows a total width of 25 mm and a height of 13.8 mm. The side view shows a total length of 8 mm and a switch height of 1.5 mm. The top view shows a total width of 9 mm and a height of 5.2 mm.</p>

Pin Hole Layout



ORDERING INFORMATION:

P/N 72A4-04

UNSHIELDED MINI DIN 4 PIN SOCKET
WITH SWITCH