

MCX SERIES CONNECTORS & ADAPTERS

50 Ohm 0-6GHz

MCX micro-miniature connectors are excellent electrical characteristics and particularly simple, suitable for 50 ohm applications and used at frequency range up to 6 GHz.

The MCX devices enable a 30% space reduction over similar SMB/SMC types.

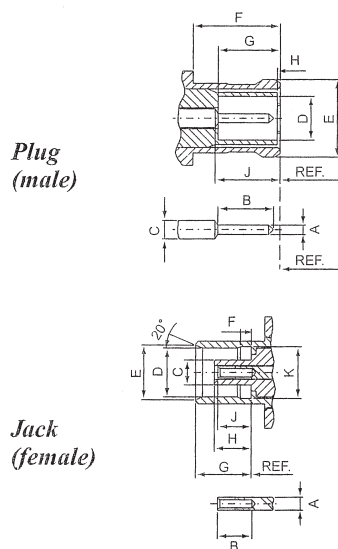
The MCX is available for affixing to industry standard cable and as a printed circuit board device.

The "push-on/pull-off" connection feature between devices offer the user easy of assemble in dense packaging layouts.

These small size, weight, performance and ease of assembly are the driving considerations to the final design decision.

These include GPS, wireless communications (WLAN and mobile) and automotive are

Interface Dimensions:



	Plug		Jack	
	min.	max.	min.	max.
A	0.48/.019	0.53/.021	0.95/.037 nom.	
B	2.49/.098	2.59/.102	2.80/.110	-
C	0.95/.037 nom.		1.80/.071	1.98/.078
D	2.00/.079	2.07/.081	3.42/.135	3.48/.137
E	3.72/.146*	3.80/.150*	3.75/.148	3.85/.152
F	4.15/.163	-	0.75/.030	0.85/.033
G	2.80/.110	3.20/.126	4.00/.157	4.12/.162
H	-	0.30/.012	2.60/.102	2.80/.110
J	2.80/.110	3.20/.126	2.30/.091	2.80/.110
K	-	-	3.60/.142	3.70/.146

PS. *prior to slotting.

Electrical:

Impedance	50 ohm	75 ohm
Frequency Range	0 to 6.0 GHz	0 to 6.0 GHz
VSWR	0-2 GHz → 1.22 max GHz (Straight)	
	1.50 max GHz (Right angle)	
Insertion Loss	2-6 GHz → 1.35 max GHz (Straight)	
	1.63 max GHz (Right angle)	
Insertion Loss	0.1dB max @ 1GHz (Straight)	
	0.2dB max @ 1GHz (Right angle)	

MCX MALE CONNECTORS (1)

MC801CU-**GT**

MCX PLUG CRIMP TYPE
RG174U, RG316U, RG188U:

MC801CU-LGGT50

MC801CU-LNGT50

RG179U, RG187U:

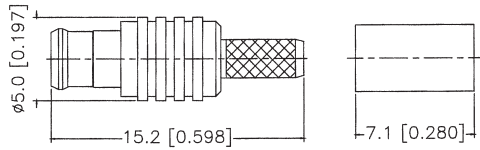
MC801CU-NGGT75

MC801CU-NNGT75

RG196U, RG178U:

MC801CU-MGGT50

MC801CU-MNGT50



MC803CU-**GT**

MCX PLUG CRIMP
RIGHT ANGLE TYPE
RG174U, RG316U, RG188U:

MC803CU-LGGT50

MC803CU-LNGT50

RG179U, RG187U:

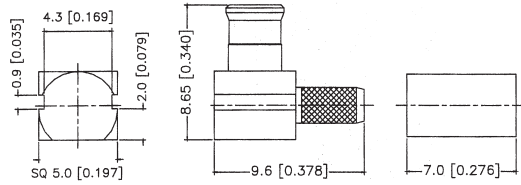
MC803CU-NGGT75

MC803CU-NNGT75

RG196U, RG178U:

MC803CU-MGGT50

MC803CU-MNGT50



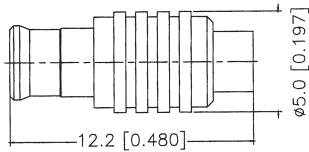
MC804CU-**GT50

MCX PLUG SOLDER
FOR SEMI-RIGID CABLE
FOR .141" CABLE:

MC804CU-R1GGT50

FOR .085" CABLE:

MC804CU-R2GGT50



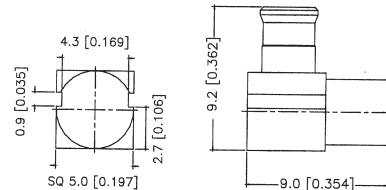
MC806CU-**GT50

MCX PLUG SOLDER R/A
FOR SEMI-RIGID CABLE
FOR .141" CABLE:

MC806CU-R1GGT50

FOR .085" CABLE:

MC806CU-R2GGT50

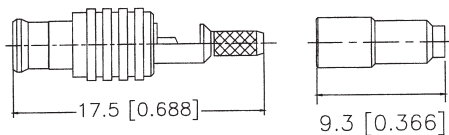


MC812CU-**GT**

MCX PLUG
CRIMP/SOLDER TYPE
RG174U, RG316U, RG188U:

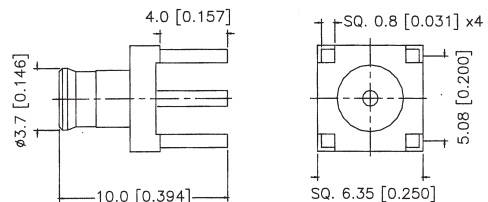
MC812CU-LGGT50

MC812CU-LNGT50



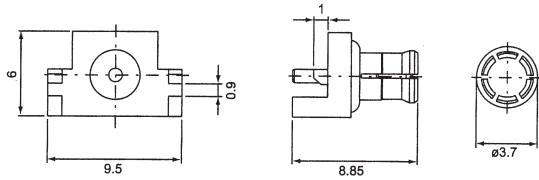
MC810CU-X*GT50

MCX PLUG WITH 4 LEGS
PCB MOUNT TYPE

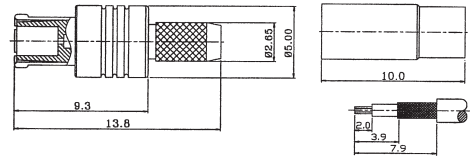


MCX MALE CONNECTORS (2)

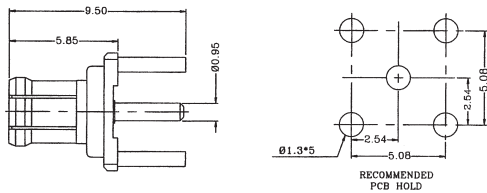
MC820CU-X*GT**
MCX PLUG STRAIGHT
PCB MOUNT TYPE



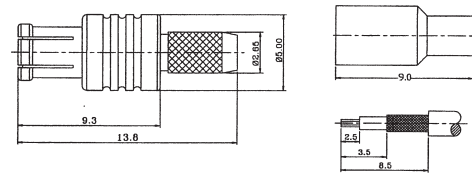
MC751CU-LGGT50
MCX PLUG CRIMP TYPE
FOR RG174,188,316/U CABLE



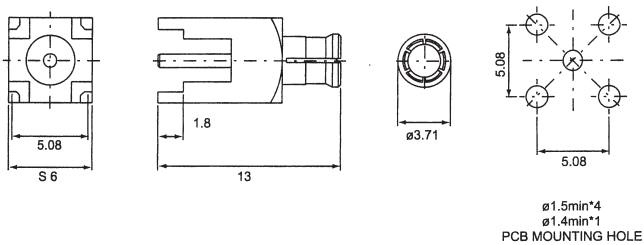
MC762CU-XGGT50
MCX PCB MOUNT PLUG



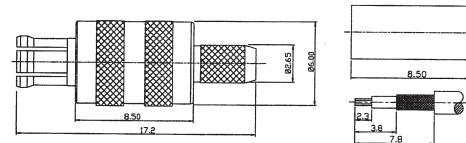
MC751CU-MGGT50
MCX PLUG CRIMP TYPE
FOR RG178,196/U CABLE



MC822CU-X*GT**
MCX PLUG WITH 4 LEGS
PCB MOUNT TYPE



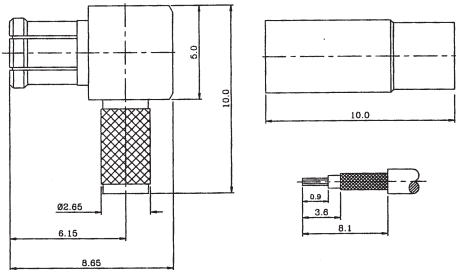
MC751CU-NGGT75
MCX PLUG CRIMP TYPE
75 OHM FOR RG179/U CABLE



MCX MALE CONNECTORS (3)

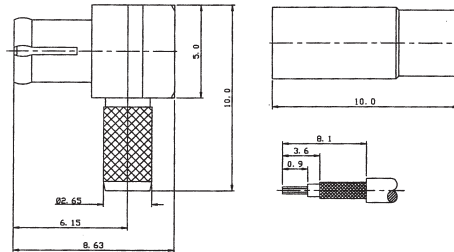
MC753CU-LGGT50

MCX PLUG CRIMP TYPE
R/A FOR RG174,188,316/U CABLE



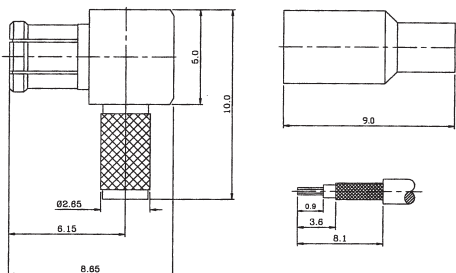
MC754ZN-LGGT50

MCX PLUG CRIMP TYPE
R/A FOR RG174,188,316/U CABLE



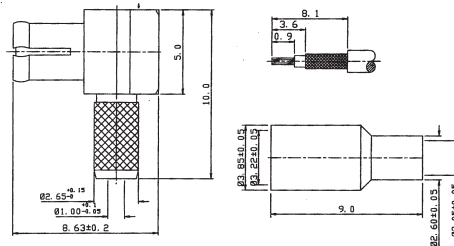
MC753CU-MGGT50

MCX PLUG CRIMP TYPE
R/A FOR RG178,196/U CABLE



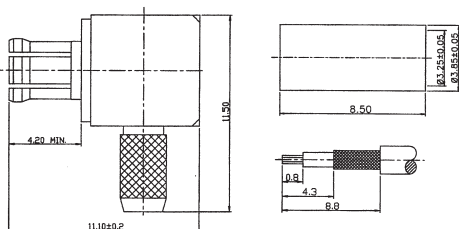
MC754ZN-MGGT50

MCX PLUG CRIMP TYPE
R/A FOR RG178,196/U CABLE



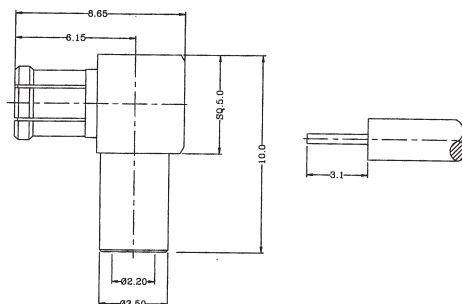
MC753CU-NGGT75

MCX PLUG CRIMP R/A TYPE
75 OHM FOR RG179/U CABLE



MC755CU-R2GGT50

MCX PLUG SOLDER TYPE
R/A FOR SEMI-RIGID .085" CABLE



MCX FEMALE CONNECTORS (1)

MC802CU-**GT**

MCX JACK CRIMP TYPE
RG174U, RG316U, RG188U:

MC802CU-LGGT50

MC802CU-LNGT50

RG179U, RG187U:

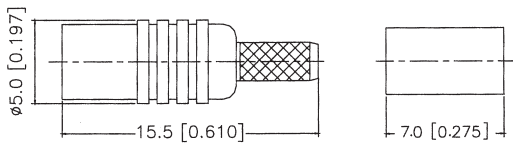
MC802CU-NGGT75

MC802CU-NNGT75

RG178U, RG196U:

MC802CU-MGGT50

MC802CU-MNGT50



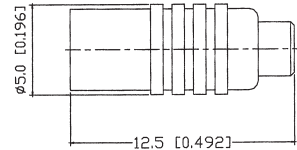
MC805CU-**GT50

MCX JACK SOLDER
FOR SEMI-RIGID CABLE
FOR .141" CABLE:

MC805CU-R1GGT50

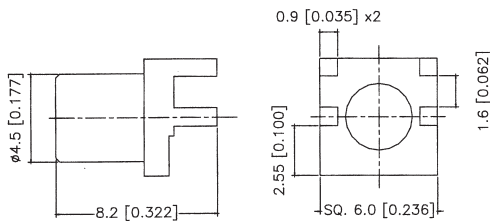
FOR .085" CABLE:

MC805CU-R2GGT50



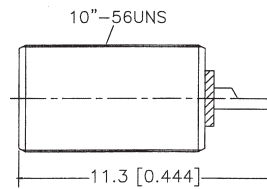
MC813CU-X*GT50

MCX JACK
END LAUNCH TYPE



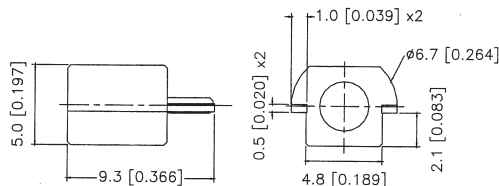
MC814CU-X*GT50

MCX JACK
SOLDER BULKHEAD TYPE



MC811CU-X*GT50

MCX JACK
EDGE CARD MOUNT TYPE



MCX FEMALE CONNECTORS (2)

MC817CU-**GT**

MCX JACK CRIMP
RIGHT ANGLE TYPE
RG174U, RG316U, RG188U:

MC817CU-LGGT50

MC817CU-LNGT50

RG179U, RG187U:

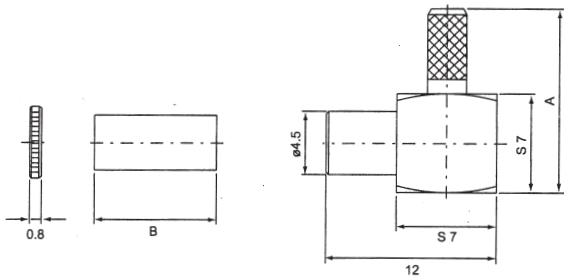
MC817CU-NGGT75

MC817CU-NNGT75

RG178U, RG196U:

MC817CU-MGGT50

MC817CU-MNGT50



MC818CU-**GT**

MCX JACK CRIMP
BULKHEAD TYPE
RG174U, RG316U, RG188U:

MC818CU-LGGT50

MC818CU-LNGT50

RG179U, RG187U:

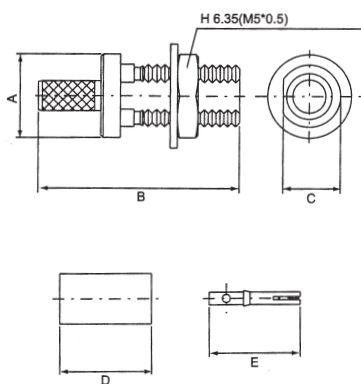
MC818CU-NGGT75

MC818CU-NNGT75

RG178U, RG196U:

MC818CU-MGGT50

MC818CU-MNGT50



MC819CU-**GT**

MCX JACK PCB CABLE
TERMINAL-CRIMP TYPE
RG174U, RG316U, RG188U:

MC819CU-LGGT50

MC819CU-LNGT50

RG179U, RG187U:

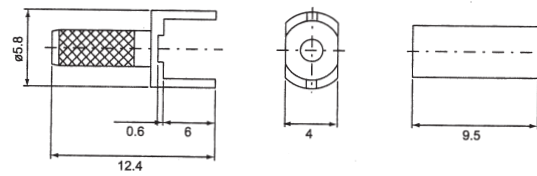
MC819CU-NGGT75

MC819CU-NNGT75

RG178U, RG196U:

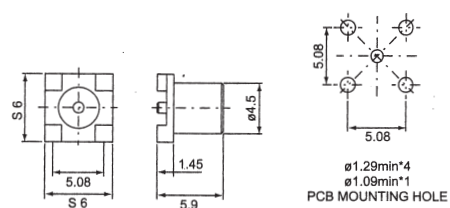
MC819CU-MGGT50

MC819CU-MNGT50



MC829CU-X*GT**

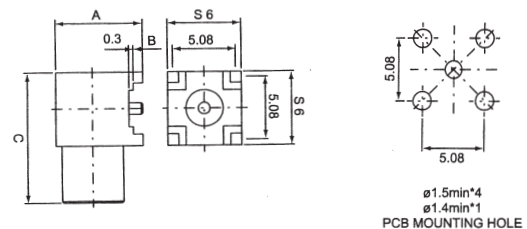
MCX JACK WITH 4 LEGS
SMT PCB MOUNT TYPE



MC841CU-X*GT**

MC842CU-X*GT**

MCX JACK RIGHT ANGLE
SMT PCB MOUNT TYPE

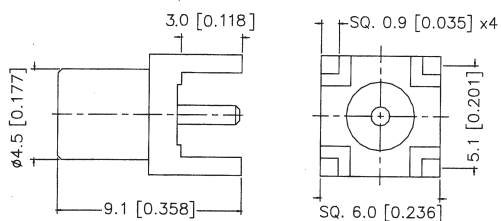


PART NO.	A	B	C
MC841CU	7.1	0.8	10
MC842CU	10	4	9

MCX FEMALE CONNECTORS (3)

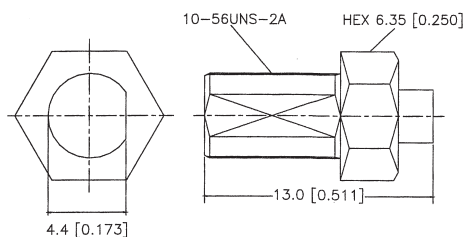
MC807CU-X*GT50

MCX JACK WITH 4 LEGS
PCB MOUNT TYPE



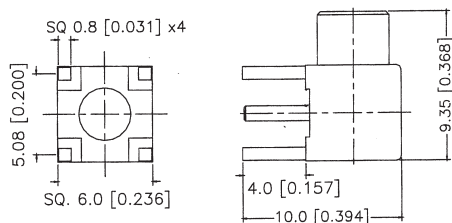
MC816CU-*GGT50

MCX JACK BULKHEAD SOLDER
WITH NUT & WAHSER
FOR SEMI-RIGID CABLE



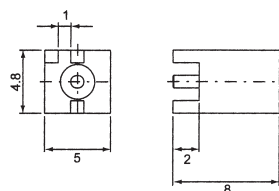
MC809CU-X*GT50

MCX JACK WITH 4 LEGS
R/A PCB MOUNT TYPE



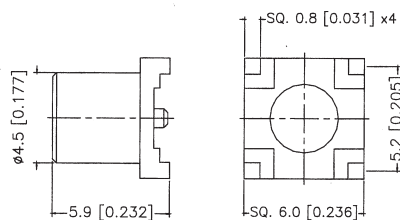
MC827CU-X*GT**

MCX JACK STRAIGHT
PCB MOUNT TYPE



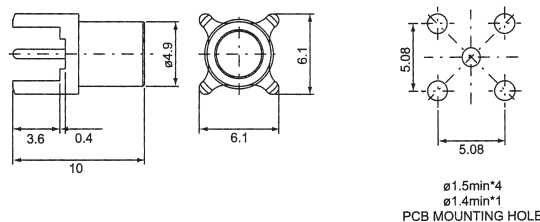
MC808CU-X*GT50

MCX JACK
SMT PCB MOUNT TYPE



MC828CU-X*GT**

MCX JACK WITH 4 LEGS
PCB MOUNT TYPE



MCX FEMALE CONNECTORS (4)

MC830CU-X*GT**

MC831CU-X*GT**

MC832CU-X*GT**

MCX JACK SOLDER

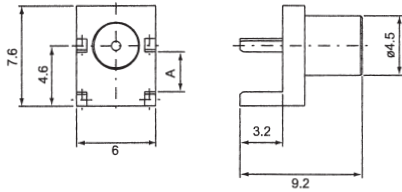
PCB MOUNT TYPE

DIMENSION A:

MC830CU: A=3.00MM

MC831CU: A=1.73MM

MC832CU: A=1.22MM



MC833CU-X*GT**

MC834CU-X*GT**

MC835CU-X*GT**

MCX JACK SOLDER

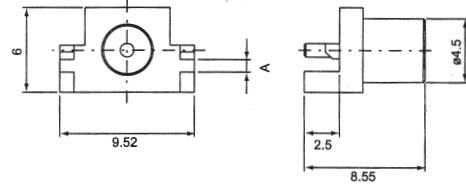
PCB MOUNT TYPE

DIMENSION A:

MC833CU: A=0.90MM

MC834CU: A=1.73MM

MC835CU: A=1.22MM



MC836CU-X*GT**

MC837CU-X*GT**

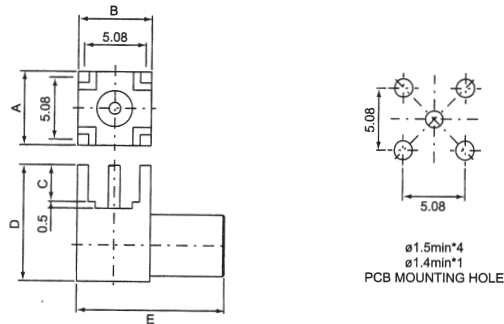
MC838CU-X*GT**

MC839CU-X*GT**

MC840CU-X*GT**

MCX JACK RIGHT ANGLE

SMT PCB MOUNT TYPE



4
 $\phi 1.5\text{min}^*$
 $\phi 1.4\text{min}^*$
 PCB MOUNTING HOLE

PART NO.	A	B	C	D	E
MC836CU	6	6	4	10	9
MC837CU	6	6	3	9.5	12
MC838CU	6	6.3	4	10	9.7
MC839CU	6.2	6.2	4	10	9.6
MC840CU	6	6	3	9.5	9.4

MC823CU-X*GT**

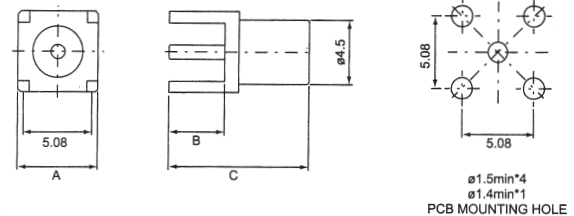
MC824CU-X*GT**

MC825CU-X*GT**

MC826CU-X*GT**

MCX JACK SOLDER

PCB MOUNT TYPE

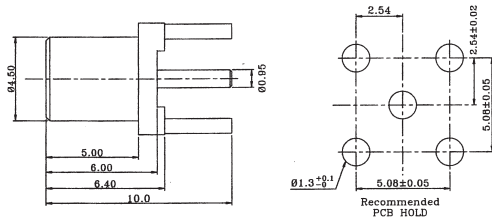


4
 $\phi 1.5\text{min}^*$
 $\phi 1.4\text{min}^*$
 PCB MOUNTING HOLE

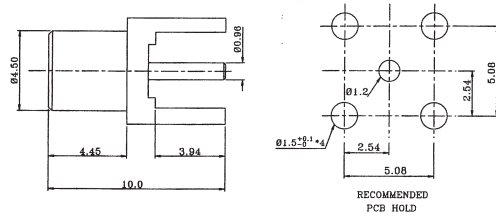
PART NO.	A	B	C
MC823CU	5.7	4	10
MC824CU	6	3.5	10
MC825CU	6	1.6	8.2
MC826CU	6	1.6	9.7

MCX FEMALE CONNECTORS (5)

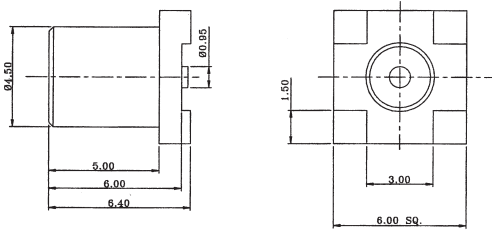
MC758CU-XGGT50
MCX PCB MOUNT JACK



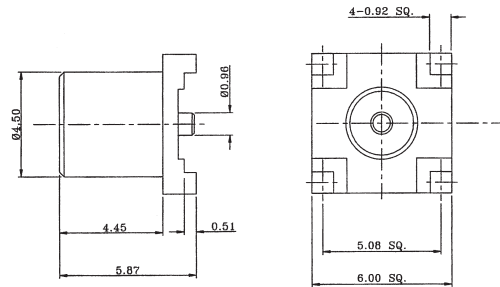
MC759CU-XGGT50
MCX PCB MOUNT JACK



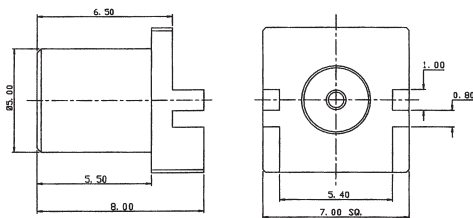
MC760CU-XGGT50
MCX SMT MOUNT JACK



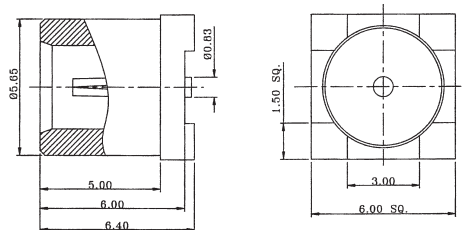
MC761CU-XGGT50
MCX SMT MOUNT JACK



MC763CU-XGGT50
MCX EDGE MOUNT JACK

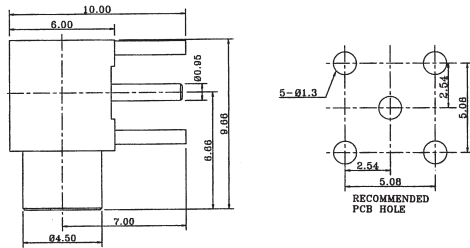


MC768CU-XGGT75
MCX PCB MOUNT JACK
75 OHM TYPE

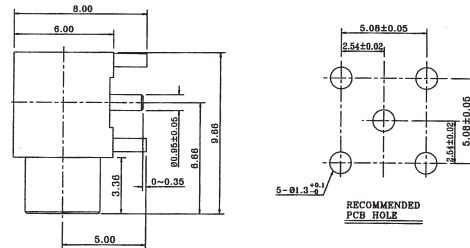


MCX FEMALE CONNECTORS (6)

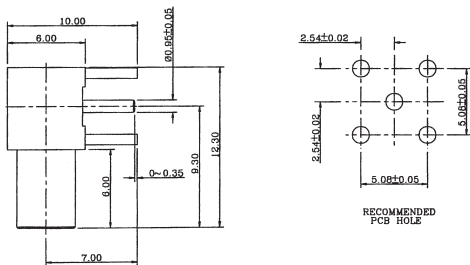
MC764CU-XGGT50
MCX PCB MOUNT JACK
RIGHT ANGLE TYPE



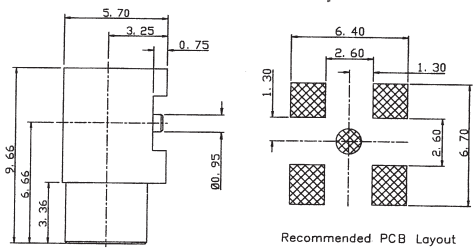
MC765CU-XGGT50
MCX PCB MOUNT JACK
RIGHT ANGLE TYPE



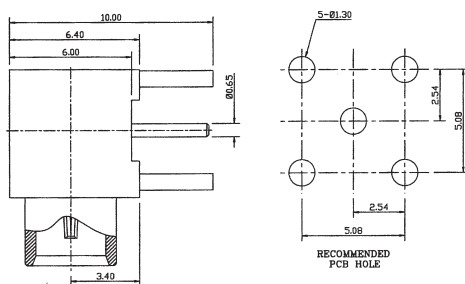
MC766CU-XGGT50
MCX PCB MOUNT JACK
RIGHT ANGLE TYPE



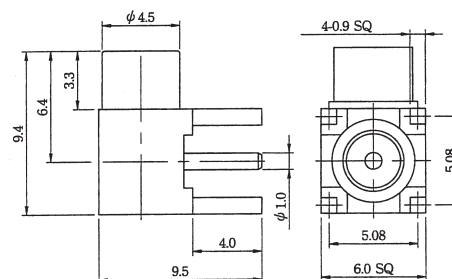
MC767CU-XGGT50
MCX SMT MOUNT JACK
RIGHT ANGLE TYPE



MC769CU-XGGT75
MCX PCB MOUNT JACK
75 OHM R/A TYPE



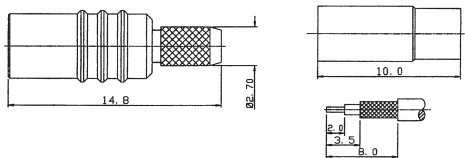
MC774CU-XGGT50
MCX JACK R/A
PCB MOUNT TYPE



MCX FEMALE CONNECTORS (7)

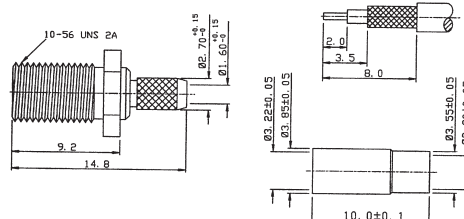
MC752CU-LGGT50

MCX JACK CRIMP TYPE
FOR RG174,188,316/U CABLE



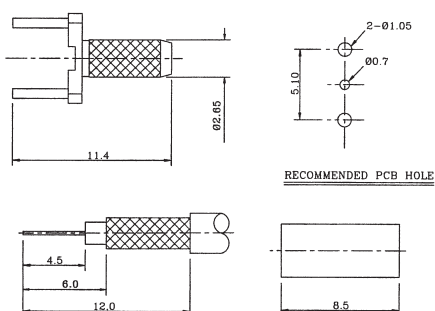
MC756CU-LGGT50

MCX JACK BULKHEAD CRIMP TYPE
FOR RG174,188,316/U CABLE



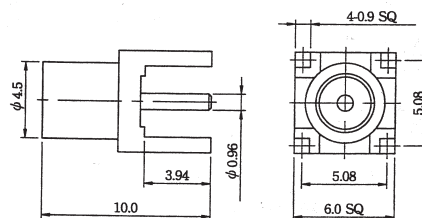
MC757CU-LGGT50

MCX JACK CRIMP TYPE
PCB TERMINATION
FOR RG174,188,316/U CABLE



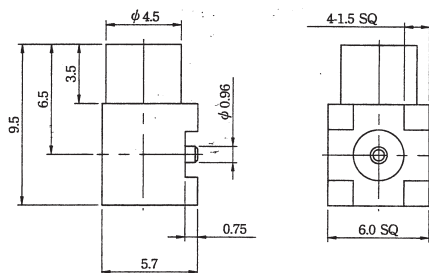
MC775CU-XGGT50

MCX JACK
PCB MOUNT TYPE



MC776CU-XGGT50

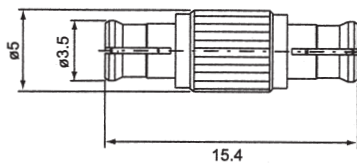
MCX JACK R/A
PCB MOUNT TYPE



MCX ADAPTERS (1)

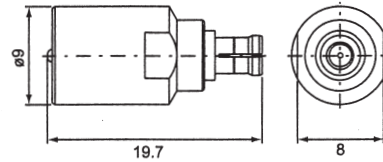
MC843CU-XGGT**

MCX DOUBLE MALE



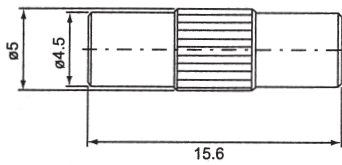
MC845CU-XGGT**

MCX MALE TO FME MALE



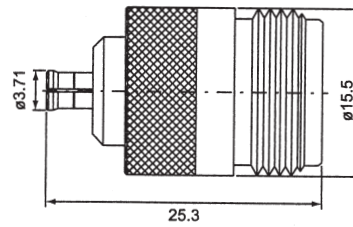
MC844CU-XGGT**

MCX DOUBLE FEMALE



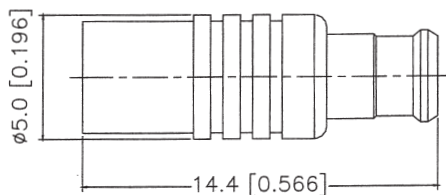
MC847CU-XGGT**

MCX MALE TO
N FEMALE



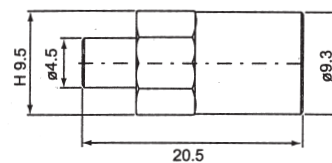
MC815CU-XGGT**

MCX MALE TO
MCX FEMALE



MC846CU-XGGT**

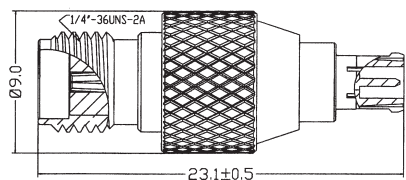
MCX FEMALE TO
FME MALE



MCX ADAPTERS (2)

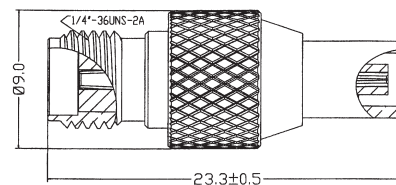
MC770CU-XGGT50

SMA FEMALE TO
MCX MALE



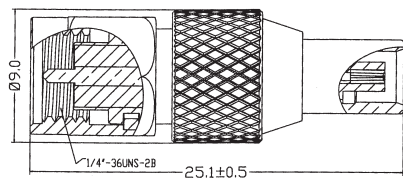
MC771CU-XGGT50

SMA FEMALE TO
MCX FEMALE



MC772CU-XGGT50

SMA MALE TO
MCX FEMALE



MC773CU-XGGT50

SMA MALE TO
MCX MALE

