

MMCX SERIES CONNECTORS & ADAPTERS

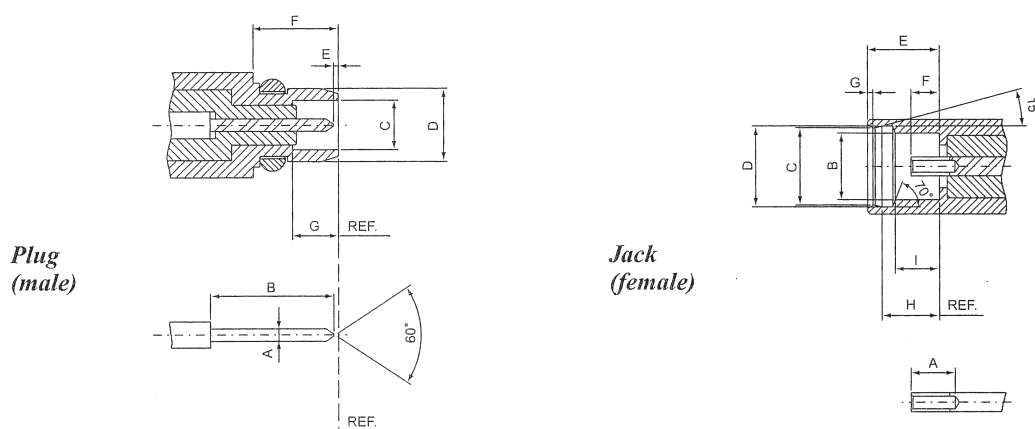
50 Ohm 0-6GHz

The MMCX connectors are designed for the small size, they can be used in applications from DC to 6 GHz and provide repeatable performance.

They're reliable "snap-on" coupling mechanism and are also responsible for transferring excellent electrical parameters during use.

Owing to the non-slotted outer conductor, the MMCX series has a low RF-leakage.

Interface Dimensions:



	Plug		Jack	
	min.	max.	min.	max.
A	0.38/.015	0.42/.017	1.40/.055	-
B	-	3.15/.124	2.41/.095	-
C	1.58/.062	1.62/.064	2.88/.113	2.90/.114
D	-	2.40/.094	3.00/.118	3.04/.120
E	0.00/.000	3.15/.124	2.60/.102	
F	2.70/.106	-	0.90/.035	1.20/.047
G	1.45/.057	-		0.23/.009
H	-	-	2.30/.091	2.34/.092
I	-	-	1.57/.062	1.63/.064

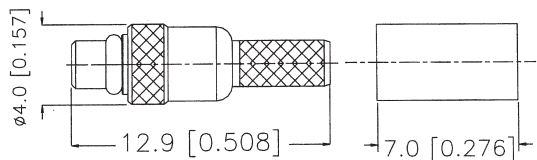
Electrical:

Impedance	50 ohm
Frequency Range	0 to 6.0 GHz
VSWR	1.2max GHz(Straight)
	1.3max GHz(Right angle)
Insertion Loss	0.2dB max @ 1GHz(Straight)
	0.3dB max @ 1GHz(Right angle)

MMCX MALE CONNECTORS (1)

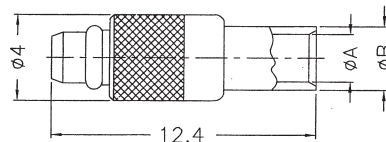
MM851CU-*GGT50

MMCX PLUG CRIMP TYPE
RG174U, RG316U, RG188U:
MM851CU-LGGT50



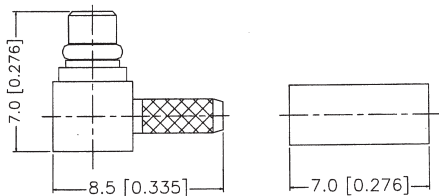
MM854CU-R2GGT50

MMCX PLUG SOLDER TYPE
FOR SEMI-RIGID .085" CABLE
A=2.2 min., B=3.0 min.



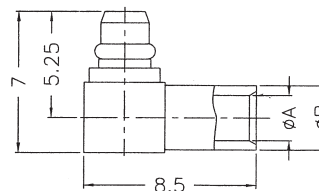
MM853CU-*GGT50

MMCX PLUG
R/A CRIMP TYPE
RG174U, RG316U, RG188U:
MM853CU-LGGT50



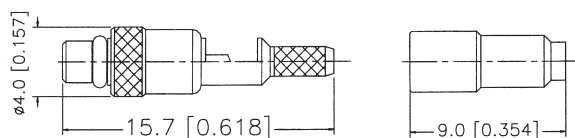
MM856CU-R2GGT50

MMCX PLUG R/A SOLDER TYPE
FOR SEMI-RIGID .085" CABLE
A=2.2 min., B=3.0 min.



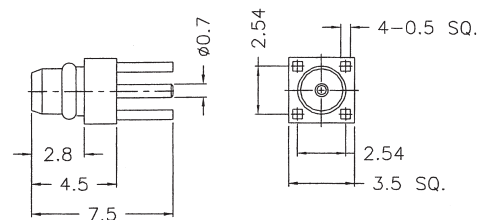
MM868CU-*GGT50

MMCX PLUG
CRIMP/SOLDER TYPE
RG174U, RG316U, RG188U:
MM868CU-LGGT50



MM857CU-XGGT50

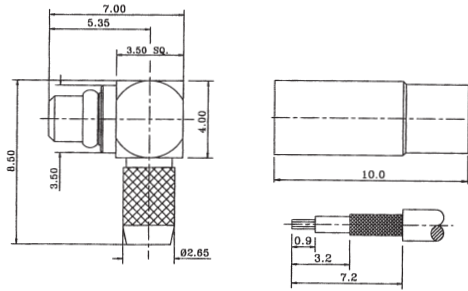
MMCX PLUG STRAIGHT
PCB MOUNT TYPE



MMCX MALE CONNECTORS (2)

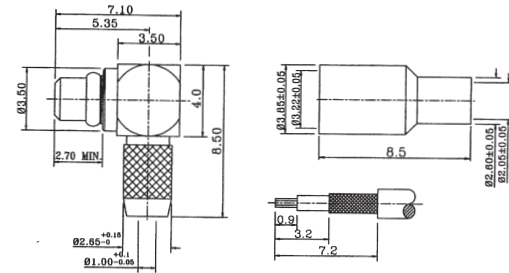
MM873**-LGGT50

MMCX PLUG CRIMP
RIGHT ANGLE TYPE
FOR RG174,188,316/U CABLE



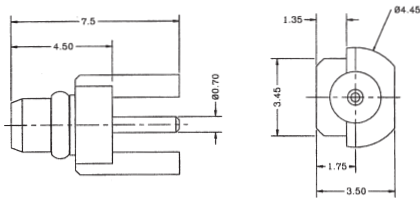
MM873**-MGGT50

MMCX PLUG CRIMP
RIGHT ANGLE TYPE
FOR RG178,196/U CABLE



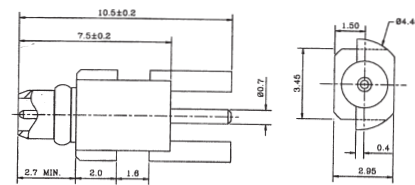
MM884CU-XGGT50

MMCX EDGE MOUNT PLUG



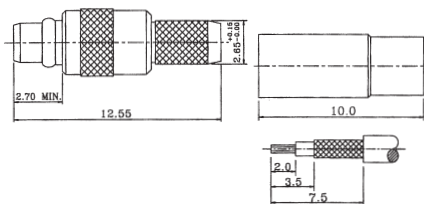
MM885CU-XGGT50

MMCX EDGE MOUNT PLUG



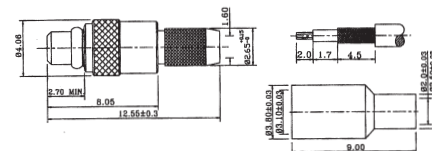
MM872CU-LGGT50

MMCX PLUG CRIMP TYPE
FOR RG174,188,316/U CABLE



MM872CU-MGGT50

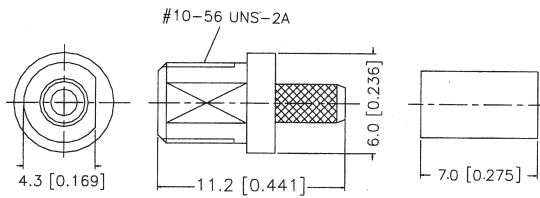
MMCX PLUG CRIMP TYPE
FOR RG178,196/U CABLE



MMCX FEMALE CONNECTORS (1)

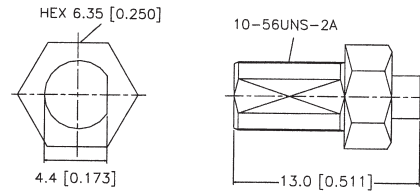
MM869CU-*GGT50

MMCX JACK
BULKHEAD CRIMP TYPE
RG174U, RG316U, RG188U:
MM869CU-LGGT50



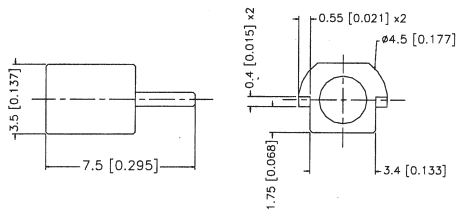
MM870CU-*GGT50

MMCX JACK
BULKHEAD SODER TYPE
FOR SEMI-RIGID CABLE
FOR .141" CABLE:
MM870CU-R1GGT50
FOR .085" CABLE:
MM870CU-R2GGT50



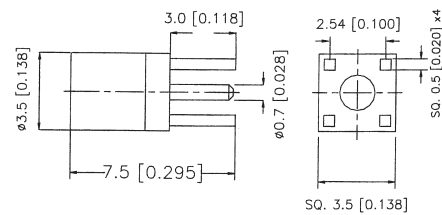
MM862CU-XGGT50

MMCX JACK
EDGE CARD MOUNT TYPE



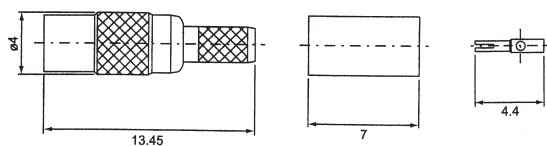
MM858CU-XGGT50

MMCX JACK WITH 4 LEGS
PCB MOUNT TYPE



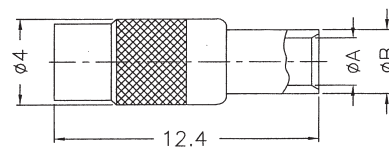
MM852CU-*GGT50

MMCX JACK CRIMP TYPE
RG174U, RG316U, RG188U:
MM852CU-LGGT50
RG178U, RG196U:
MM852CU-MGGT50
RG179U, RG187U:
MM852CU-NGGT50



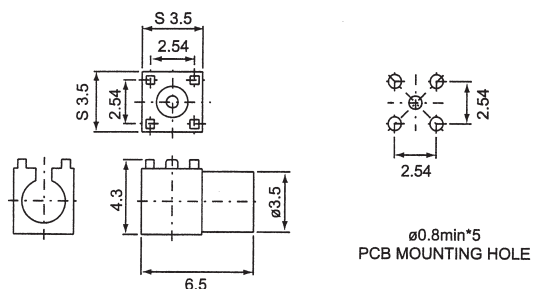
MM855CU-R2GGT50

MMCX JACK SOLDER TYPE
FOR SEMI-RIGID .085" CABLE
A=2.2 min., B=3.0 min.

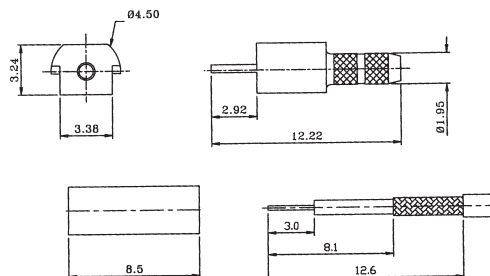


MMCX FEMALE CONNECTORS (2)

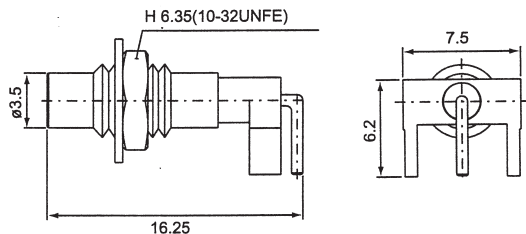
MM863CU-XGGT50
MMCX JACK RIGHT ANGLE
SMT PCB MOUNT TYPE



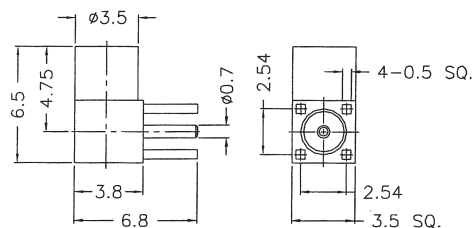
MM877CU-MGGT50
MMCX JACK CRIMP TYPE
PCB TERMINATION
FOR RG178,196/U CABLE



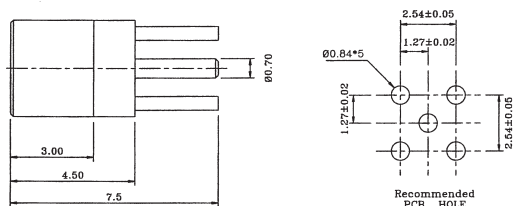
MM864CU-XGGT50
MMCX JACK RIGHT ANGLE
PCB MOUNT TYPE



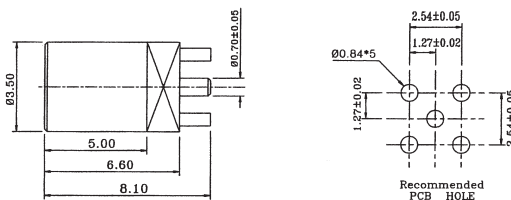
MM859CU-XGGT50
MMCX JACK RIGHT ANGLE
PCB MOUNT TYPE



MM878CU-XGGT50
MMCX PCB MOUNT JACK

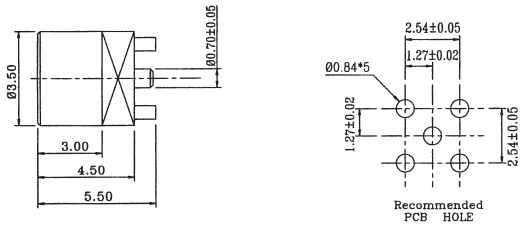


MM879CU-XGGT50
MMCX PCB MOUNT JACK

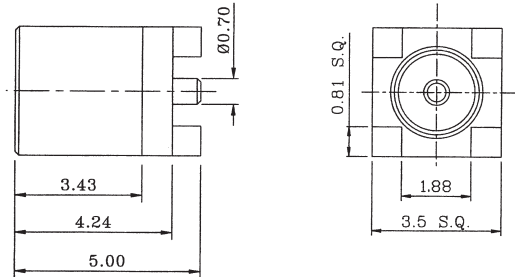


MMCX FEMALE CONNECTORS (3)

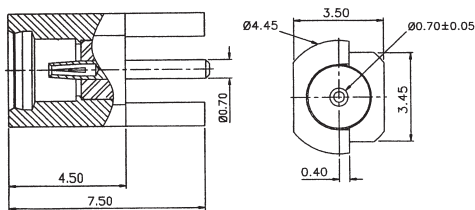
MM880CU-XGGT50
MMCX PCB MOUNT JACK



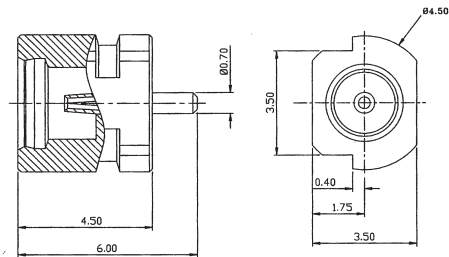
MM881CU-XGGT50
MMCX SMT MOUNT JACK



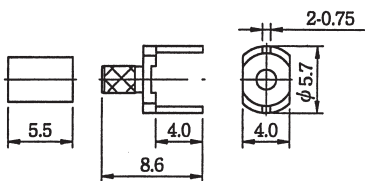
MM882CU-XGGT50
MMCX EDGE MOUNT JACK



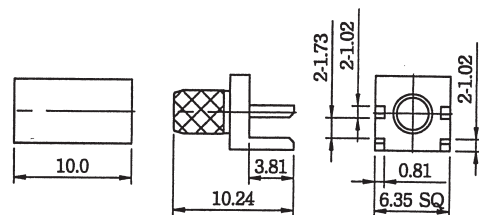
MM883CU-XGGT50
MMCX EDGE MOUNT JACK



MM889CU-*GGT50
MMCX SHIELDED CABLE
TERMINATION PCB TYPE



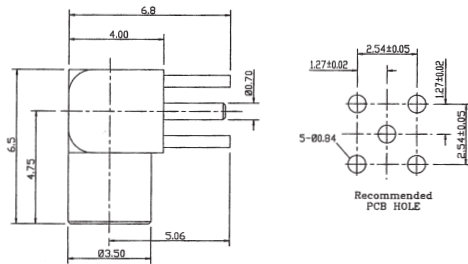
MM890CU-*GGT50
MMCX CRIMP
END LAUNCH TYPE



MMCX FEMALE CONNECTORS (4)

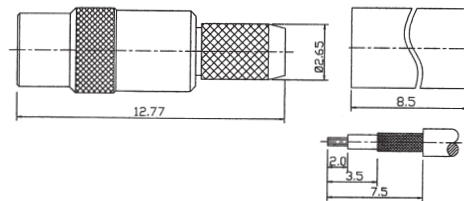
MM886CU-XGGT50

MMCX RIGHT ANGLE
PCB MOUNT JACK



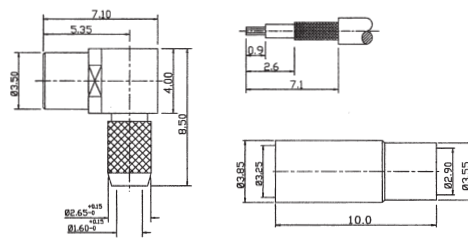
MM874CU-LGGT50

MMCX JACK CRIMP TYPE
FOR RG174,188,316/U CABLE



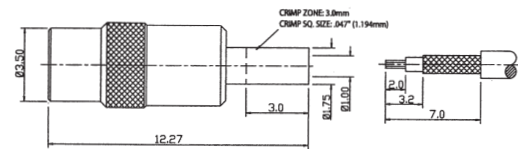
MM875CU-LGGT50

MMCX JACK R/A CRIMP TYPE
FOR RG174,188,316/U CABLE



MM876CU-13GGT50

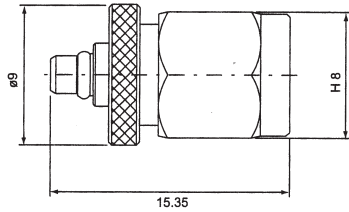
MMCX JACK CRIMP TYPE
FOR DIA. 1.13MM CABLE



MMCX ADAPTERS

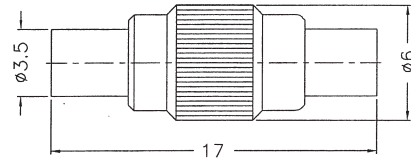
MM866CU-XGGT50

MMCX MALE TO
SMA MALE



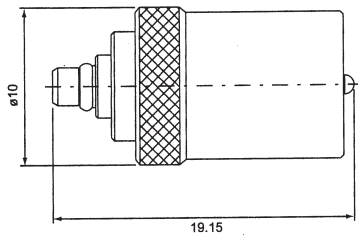
MM860CU-XGGT50

MMCX DOUBLE FEMALE



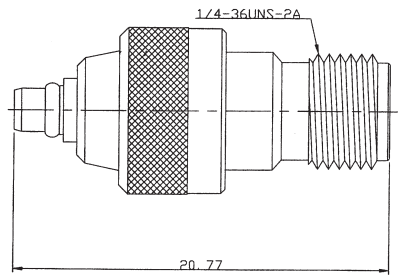
MM865CU-XGGT50

MMCX MALE TO
FME MALE



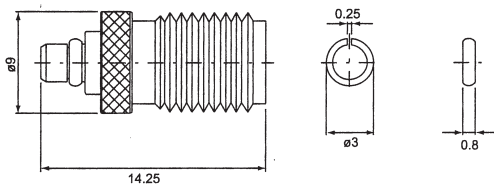
MM887CU-XGGT50

MMCX MALE TO
SMA FEMALE



MM867CU-XGGT50

MMCX MALE TO
SMA FEMALE



MM888CU-XGGT50

MMCX FEMALE TO
SMA FEMALE

