

## N SERIES CONNECTORS & ADAPTERS

### 50 Ohm 0-11GHz/75 Ohm 0-1.5GHz

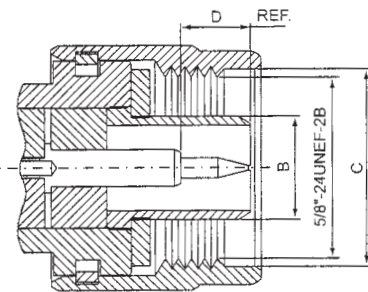
N series coaxial is impedance matched to 50-Ohm cable and they are medium-sized.

The threaded coupling ensures proper mating in applications where shock and extreme vibration are designed considerations and for use from DC to 11GHz.

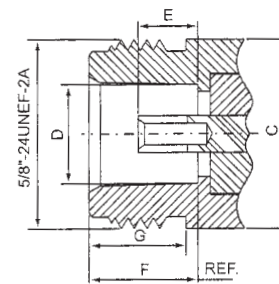
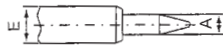
Their consistently low broadband VSWR have made them popular over the years in many applications.

Cable terminations are available in crimp, clamp and solder configurations. They're used in aerospace, broadcast, audio and video applications as well as many microwave components such as filters, couplers, amplifiers and attenuators to kind a handful.

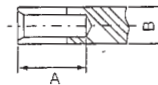
### Interface Dimensions:



*Plug (male)*



*Jack (female)*



	Plug		Jack	
	min.	max.	min.	max.
A	1.60/.063	1.68/.066	5.33/.210	-
B	-	8.38/.330	3.00/.118	3.15/.124
C	16.00/.630	-	-	15.93/.627
D	5.33/.210	5.84/.230	8.03/.316	8.13/.320
E	-	3.15/.124	4.75/.187	5.26/.207
F	-	-	9.04/.056	9.19/.362
G	-	-	6.76/.266	-

### Electrical:

Impedance	50 ohm	75ohm
Frequency Range	0 to 11.0 GHz	0 to 1.5GHz
VSWR	Straight: 1.3max ; Right angle: 1.5max	
Insertion Loss	0.3dB max at 10GHz	

## N MALE CONNECTORS (1)

### **N304CU-\*NGT\*\***

N PLUG CRIMP TYPE  
RG58U, RG141U:

### **N304CU-FNGT\*\***

RG59U, RG62U:

### **N304CU-GNGT\*\***

RG174U, RG316U:

### **N304CU-LNGT\*\***



### **N305CU-\*NGT\*\***

N PLUG CRIMP TYPE  
RG213U:

### **N305CU-BNGT\*\***

RG214U:

### **N305CU-CNGT\*\***

RG11U:

### **N305CU-DNGT\*\***



### **N324CU-\*NGT\*\***

N PLUG CRIMP  
RIGHT ANGLE TYPE  
RG58U, RG141U:

### **N324CU-FNGT\*\***

RG59U, RG62U:

### **N324CU-GNGT\*\***

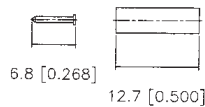
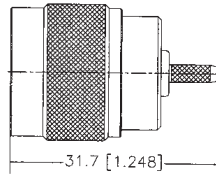
RG174U, RG316U:

### **N324CU-LNGT\*\***



### **N382CU-\*NGT50**

N PLUG CRIMP TYPE  
(PIN IN PIN)



### **N300CU-\*NGT\*\***

N PLUG CLAMP TYPE  
RG58U, RG141U:

### **N300CU-FNGT\*\***

RG59U, RG62U:

### **N300CU-GNGT\*\***



### **N301CU-\*NGT\*\***

N PLUG CLAMP TYPE  
RG213U:

### **N301CU-BNGT\*\***

RG214U:

### **N301CU-CNGT\*\***

RG11U:

### **N301CU-DNGT\*\***



### **N303CU-\*NGT\*\***

N PLUG CLAMP  
RIGHT ANGLE TYPE  
RG213U:

### **N303CU-BNGT\*\***

RG214U:

### **N303CU-CNGT\*\***

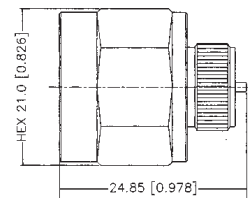
RG11U:

### **N303CU-DNGT\*\***



### **N384CU-XNGT50**

N PLUG PRESS FIT TYPE



## N MALE CONNECTORS (2)

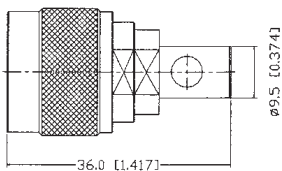
### N326CU-X\*\*\*\*\*

N PLUG SOLDER  
PANEL MOUNT TYPE  
N326CU-XSST50  
N326CU-XNGT50



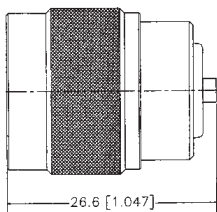
### N381CU-\*NGT50

N PLUG SOLDER TYPE



### N383CU-\*NGT50

N PLUG SOLDER TYPE  
FOR SEMI-RIGID CABLE  
SEMI-RIGID .141" CABLE:  
N383CU-R1NGT50  
SEMI-RIGID .085" CABLE:  
N383CU-R2NGT50



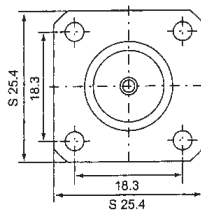
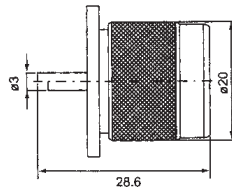
### N337CU-XNXX

PROTECTIVE CAP FOR  
N MALE CONNECTOR



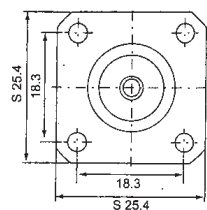
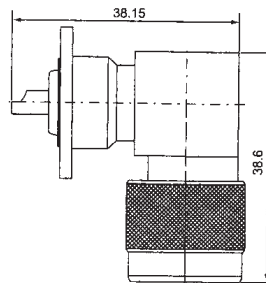
### N394CU-XNGT50

N PLUG SOLDER  
PANEL MOUNT TYPE



### N395CU-XNGT50

N PLUG SOLDER R/A  
PANEL MOUNT TYPE



### N317CU-XNGT50

### N318CU-XNGT75

### N319CU-XNGT93

N MALE TERMINATOR



## N FEMALE CONNECTORS (1)

### N307CU-\*NGT\*\*

N JACK CRIMP TYPE  
RG58U, RG141U:

**N307CU-FNGT\*\***

RG59U, RG62U:

**N307CU-GNGT\*\***

RG174U, RG316U:

**N307CU-LNGT\*\***

RG213U:

**N307CU-BNGT\*\***

RG214U:

**N307CU-CNGT\*\***

RG11U:

**N307CU-DNGT\*\***



### N325CU-\*NGT\*\*

N JACK CRIMP  
BULKHEAD TYPE

RG58U, RG141U:

**N325CU-FNGT\*\***

RG59U, RG62U:

**N325CU-GNGT\*\***

RG174U, RG316U:

**N325CU-LNGT\*\***

RG213U:

**N325CU-BNGT\*\***

RG214U:

**N325CU-CNGT\*\***

RG11U:

**N325CU-DNGT\*\***



### N322CU-\*NGT\*\*

N JACK CRIMP  
PANEL MOUNT TYPE

RG58U, RG141U:

**N322CU-FNGT\*\***

RG59U, RG62U:

**N322CU-GNGT\*\***

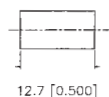
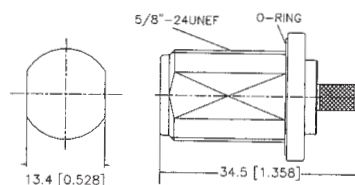
RG174U, RG316U:

**N322CU-LNGT\*\***



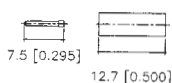
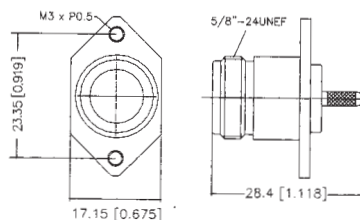
### N385CU-\*NGT50

N JACK CRIMP BULKHEAD  
(WATERPROOF)



### N389CU-\*NGT50

N JACK CRIMP  
PANEL MOUNT TYPE  
(PIN IN PIN)



### N396CU-\*NGT\*\*

N JACK CRIMP  
RIGHT ANGLE TYPE

RG58U, RG141U:

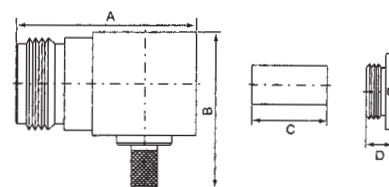
**N396CU-FNGT\*\***

RG59U, RG62U:

**N396CU-GNGT\*\***

RG6U, RG5U:

**N396CU-ANGT\*\***



### N302CU-\*NGT\*\*

N JACK CLAMP TYPE

RG213U:

**N302CU-BNGT\*\***

RG214U:

**N302CU-CNGT\*\***

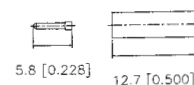
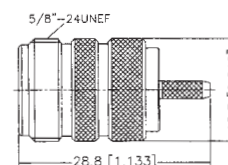
RG11U:

**N302CU-DNGT\*\***



### N387CU-\*NGT50

N JACK CRIMP TYPE  
(PIN IN PIN)



## N FEMALE CONNECTORS (2)

### N306CU-X\*\*\*\*\*

N JACK SOLDER  
PANEL MOUNT TYPE

**N306CU-XSST50**  
**N306CU-XNGT50**



### N327CU-XNG\*\*\*

N JACK SOLDER  
BULKHEAD TYPE



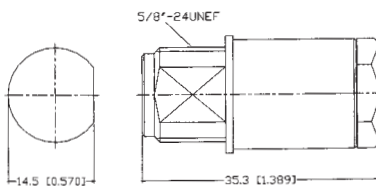
### N370CU-XNG\*\*\*

N JACK SOLDER  
BULKHEAD WITH O-RING



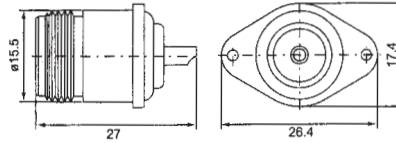
### N386CU-\*NGT50

N JACK BULKHEAD  
CLAMP TYPE



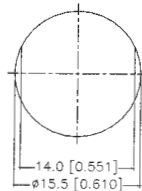
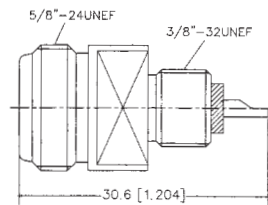
### N407CU-XNGT\*\*

N JACK SOLDER  
PANEL MOUNT TYPE



### N392CU-\*NGT50

N JACK SOLDER BULKHEAD  
FRONT MOUNT TYPE



### N398CU-XNGT\*\*

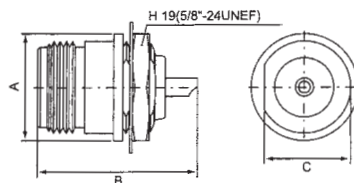
### N399CU-XNGT\*\*

### N400CU-XNGT\*\*

### N401CU-XNGT\*\*

### N402CU-XNGT\*\*

N JACK SOLDER  
BULKHEAD TYPE



PART NO.	A	B	C
N398CU	18	27	-----
N399CU	19	74.6	-----
N400CU	19	110.6	-----
N401CU	19	36.2	-----
N402CU	18	27	14.5

### N393CU-\*NGT50

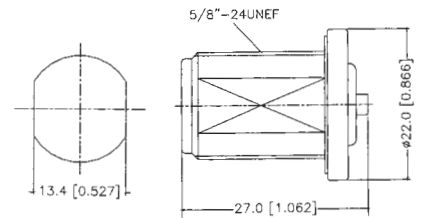
N JACK SOLDER BULKHEAD  
FOR SEMI-RIGID CABLE

SEMI-RIGID .141" CABLE:

**N393CU-R1NGT50**

SEMI-RIGID .085" CABLE:

**N393CU-R2NGT50**



### N411CU-XNGT\*\*

### N412CU-XNGT\*\*

### N413CU-XNGT\*\*

### N414CU-XNGT\*\*

### N415CU-XNGT\*\*

### N416CU-XNGT\*\*

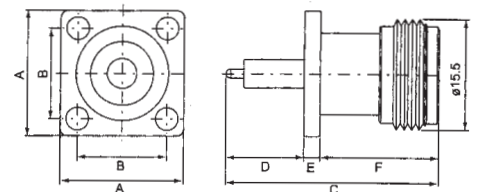
### N417CU-XNGT\*\*

### N418CU-XNGT\*\*

### N419CU-XNGT\*\*

### N420CU-XNGT\*\*

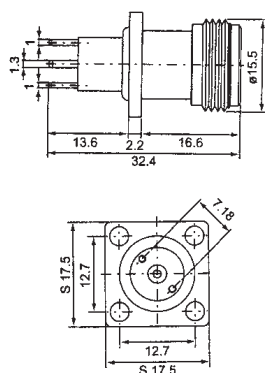
N JACK PANEL SOLDER  
PRESSURIZED  
WITH O-RING SEAL



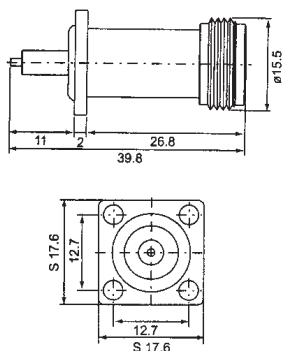
PART NO.	A	B	C	D	E	F
N411CU	17.5	12.7	29.8	11	2.2	16.6
N412CU	17.5	12.7	38.8	20	2.2	16.6
N413CU	25.4	18.2	36.8	18	2.2	16.6
N414CU	25.4	18.2	36.7	17.9	2	16.8
N415CU	17.5	12.7	30.8	12	2.2	16.6
N416CU	17.5	12.7	29.5	10.7	2.2	16.6
N417CU	17.5	12.7	40	21.2	2.2	16.6
N418CU	17.5	12.7	24.9	6.1	2.2	16.6
N419CU	17.5	12.7	33.8	15	2.2	16.6
N420CU	17.5	12.7	29.8	11	2.2	16.6

## N FEMALE CONNECTORS (3)

**N403CU-XNGT\*\***  
N JACK PANEL SOLDER  
PRESSURIZED  
WITH O-RING SEAL



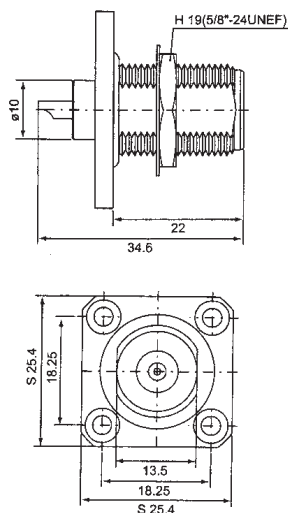
**N409CU-XNGT\*\***  
N JACK PANEL SOLDER  
PRESSURIZED  
WITH O-RING SEAL



**N351CU-XNGT50**  
**N352CU-XNGT75**  
**N353CU-XNGT93**  
N FEMALE TERMINATOR



**N410CU-XNGT75**  
N JACK 75 OHM SOLDER  
PANEL MOUNT TYPE



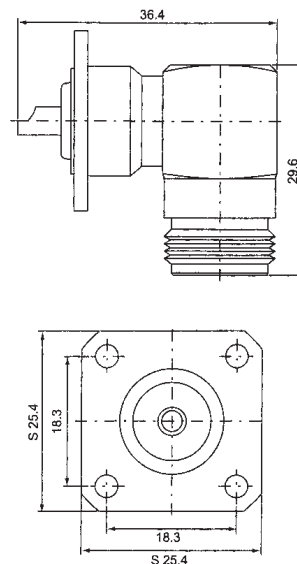
**N373CU-XNGT50**  
N JACK PANEL MOUNT  
WITH EXPOSED TEFLON



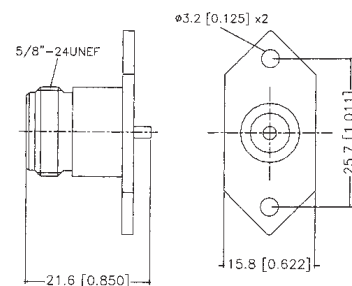
**N336CU-XNXX**  
PROTECTIVE CAP FOR  
N FEMALE CONNECTOR



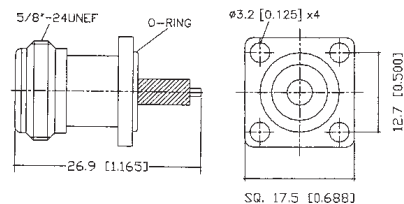
**N408CU-XNGT50**  
N JACK SOLDER R/A  
PANEL MOUNT TYPE



**N388CU-XNGT50**  
N JACK PANEL MOUNT  
WITH 2 HOLE FLANGE



**N391CU-XNGT50**  
N JACK PANEL MOUNT  
WITH EXPOSED TEFLON



## N FEMALE CONNECTORS (4)

### N404CU-\*NGT\*\*

N JACK SCREW-ON  
PANEL MOUNT TYPE  
RG58U, RG141U:

**N404CU-FNGT\*\***

RG59U, RG62U:

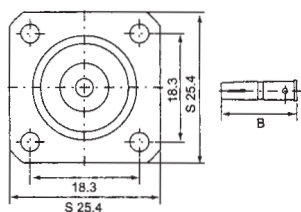
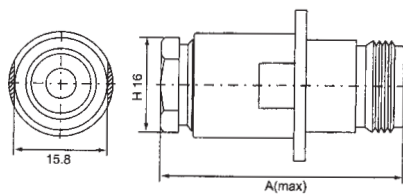
**N404CU-GNGT\*\***

RG6U, RG5U:

**N404CU-ANGT\*\***

RG213U:

**N404CU-BNGT\*\***



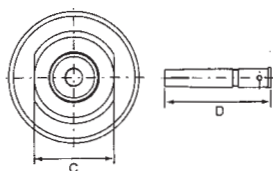
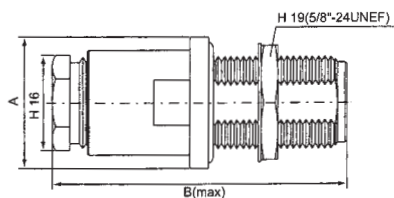
### N397CU-\*NGT\*\*

N JACK SCREW-ON  
BULKHEAD TYPE  
RG58U, RG141U:

**N397CU-FNGT\*\***

RG213U:

**N397CU-BNGT\*\***



### N405CU-XNGT\*\*

### N406CU-XNGT\*\*

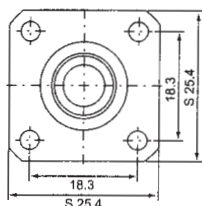
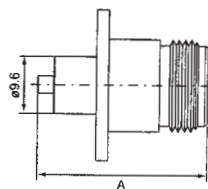
N JACK PANEL MOUNT

DIM. A=28.6MM:

**N405CU-XNGT\*\***

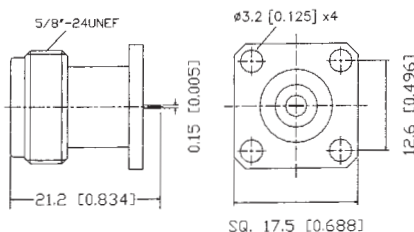
DIM. A=37.2MM:

**N406CU-XNGT\*\***



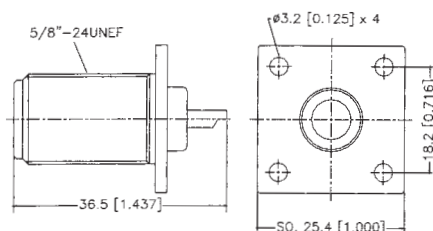
### N372CU-XNGT50

N JACK PANEL MOUNT  
WITH SQUARE FLANGE



### N390CU-XNGT50

N JACK PANEL MOUNT  
WITH SQUARE FLANGE



### N321CU-\*NGT50

N JACK (UG-159D/U)  
BULKHEAD CRIMP TYPE

RG58U, RG141U:

**N321CU-FNGT50**

RG59U, RG62U:

**N321CU-GNGT50**



### N424CU-\*NGT50

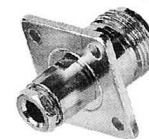
N JACK (UG-22E/U)  
CHASSIS CLAMP TYPE

RG58U, RG141U:

**N424CU-FNGT50**

RG59U, RG62U:

**N424CU-GNGT50**



### N425CU-\*NGT50

N JACK RIGHT ANGLE  
BULKHEAD CRIMP TYPE

RG58U, RG141U:

**N425CU-FNGT50**

RG59U, RG62U:

**N425CU-GNGT50**



## IN-SERIES & BETWEEN SERIES N ADAPTERS (1)

**N308CU-X\*\*\*\*\***  
 (UG-57B/U)  
 N DOUBLE MALE



**N310CU-X\*\*\*\*\***  
 N MALE TO N FEMALE



**N309CU-X\*\*\*\*\***  
 (UG-29B/U)  
 N DOUBLE FEMALE



**N346CU-X\*\*\*\*\***  
 N DOUBLE MALE  
 RIGHT ANGLE TYPE



**N311CU-X\*\*\*\*\***  
 N MALE TO N FEMALE  
 RIGHT ANGLE TYPE



**N347CU-X\*\*\*\*\***  
 (UG-27B/U)  
 N DOUBLE FEMALE  
 RIGHT ANGLE TYPE



**N313CU-X\*\*\*\*\***  
 (UG-107B/U)  
 N MALE TO  
 N DOUBLE FEMALE



**N323CU-XNG\*50**  
 N MALE TO RCA FEMALE



**N312CU-X\*\*\*\*\***  
 (UG-28A/U)  
 N TRIPLE FEMALE



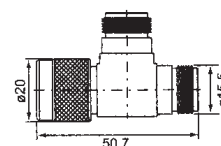
**N349CU-X\*\*\*\*\***  
 N DOUBLE FEMALE  
 BULKHEAD TYPE



**N330CU-X\*\*\*\*\***  
 N DOUBLE FEMALE  
 PANEL MOUNT TYPE



**N421CU-XNG\*\*\***  
 N MALE TO  
 N DOUBLE FEMALE





**IN-SERIES & BETWEEN SERIES N ADAPTERS (2)**

**N333CU-X\*\*\*\*\***  
N MALE TO UHF MALE



**N350CU-X\*\*\*\*\***  
N MALE TO F MALE



**N342CU-X\*\*\*\*\***  
N MALE TO SMA MALE



**N314CU-X\*\*\*\*\***  
(UG-146/U)  
N MALE TO UHF FEMALE



**N332CU-X\*\*\*75**  
N MALE TO F FEMALE



**N344CU-X\*\*\*50**  
N MALE TO SMA FEMALE



**N341CU-X\*\*\*\*\***  
(UG-83B/U)  
N FEMALE TO UHF MALE



**N315CU-X\*\*\*75**  
N FEMALE TO F MALE



**N343CU-X\*\*\*50**  
N FEMALE TO SMA MALE



**N334CU-X\*\*\*\*\***  
N FEMALE TO UHF FEMALE



**N316CU-X\*\*\*75**  
N FEMALE TO F FEMALE



**N345CU-X\*\*\*50**  
N FEMALE TO SMA FEMALE



**IN-SERIES & BETWEEN SERIES N ADAPTERS (3)**

**N346CU-XNGD50**

N DOUBLE MALE  
RIGHT ANGLE TYPE



**N423CU-XNGD50**

N MALE TO TNC FEMALE  
RIGHT ANGLE TYPE



**N311CU-XNGD50**

N MALE TO N FEMALE  
RIGHT ANGLE TYPE (UG27/U)



**N367CU-XNGD50**

N MALE TO UHF FEMALE  
RIGHT ANGLE TYPE



**N347CU-XNGD50**

N DOUBLE FEMALE  
RIGHT ANGLE TYPE



**N368CU-XNGD50**

N FEMALE TO UHF MALE  
RIGHT ANGLE TYPE



**N313CU-XNGD50**

N MALE TO  
N DOUBLE FEMALE



**N422CU-XNG\*\*\***

N FOUR FEMALE

