

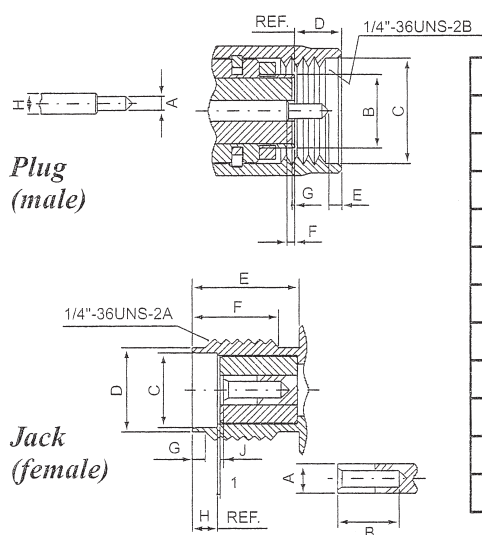
## SMA SERIES CONNECTORS & ADAPTERS

### 50 Ohm 0-18GHz

SMA series connectors are semi-precision, subminiature, high frequency connectors and offer reliable broadband performance DC to 18GHz with low reflection and constant 50-Ohm impedance.

The main features are high mechanical strength, high durability and low VSWR. Developed design principles, careful manufacturing at all stages and a thorough quality assurance organization are the basis for the well know quality have made the SMA are widely in the microwave community. Among typical applications are components, such as dividers, mixers, amplifiers, trimmers and attenuators. SMA connectors are also used to provide interconnections from printed circuit board strip lines to coaxial cable.

### Interface Dimensions:



	Plug		Jack	
	min.	max.	min.	max.
A	0.90/.036	0.94/.037	1.24/.049	1.29/.051
B	-	4.59/.181	2.67/.105	-
C	6.35/.250	-	5.28/.208	5.49/.216
D	-	3.34/.135	4.59/.181	4.67/.184
E	0.38/.015	1.14/.045	5.54/.218	-
F	0.00/.000	0.25/.010	4.32/.170	-
G	0.00/.000	0.18/.007	0.38/.015	1.14/.045
H	1.24/.049	1.29/.051	1.88/.074	1.98/.078
I	-	-	0.00/.000	0.25/.010
J	-	-	0.00/.000	0.18/.007

### Electrical:

Impedance	50 ohm
Frequency Range	0 to 18.0 GHz *RG-402 & RG-405 semi-rigid cable-0 to 18.0GHz *flexible cable→max operation frequency of cable per MIL-C-17(12.4GHz max)
VSWR	RG178U→1.2+0.025 f max GHz(Straight) →1.2+0.03 f max GHz(Right angle)
	RG316U→1.15+0.02 f max GHz(Straight) →1.15+0.03 f max GHz(Right angle)
	RG412U→1.15+0.01 f max GHz(Straight) →1.15+0.02 f max GHz(Right angle)
	RG402U→1.05+0.01 f max GHz(Straight) →1.1+0.01 f max GHz(Right angle)
	RG405U→1.07+0.01 f max GHz(Straight) →1.1+0.01 f max GHz(Right angle)
Insertion Loss	0.06dB maximum $\sqrt{f} \times \text{GHz} @ 6\text{GHz}$

## SMA FEMALE CONNECTORS (1)

### SA705CU-\*\*GT50

SMA JACK CRIMP TYPE  
RG58U, RG141U:

**SA705CU-FGGT50**

**SA705CU-FNGT50**

RG142, RG55U:

**SA705CU-KGGT50**

**SA705CU-KNGT50**

RG223U:

**SA705CU-PGGT50**

**SA705CU-PNGT50**

RG174U, RG316U:

**SA705CU-LGGT50**

**SA705CU-LNGT50**



### SA707CU-\*\*GT50

SMA JACK CRIMP  
PANL MOUNT TYPE  
WITH NARROW FLANGE  
RG58U, RG141U:

**SA707CU-FGGT50**

**SA707CU-FNGT50**

RG59U, RG62U:

**SA707CU-GGGT50**

**SA707CU-GNGT50**



### SA711CU-\*\*GT50

SMA JACK CRIMP  
PANL MOUNT TYPE  
WITH SQUARE FLANGE  
RG174U, RG316U:

**SA711CU-LGGT50**

**SA711CU-LNGT50**



### SA704CU-\*\*GT50

SMA JACK CRIMP  
BULKHEAD TYPE  
RG58U, RG141U:

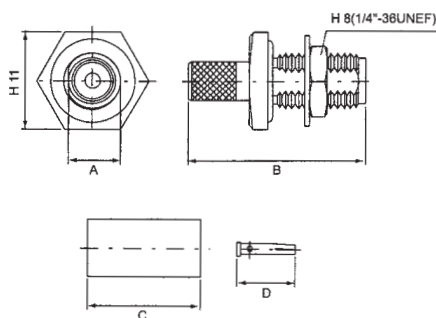
**SA704CU-FGGT50**

**SA704CU-FNGT50**

RG174U, RG316U:

**SA704CU-LGGT50**

**SA704CU-LNGT50**



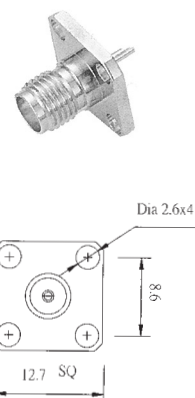
### SA716CU-X\*GT50

SMA JACK SOLDER  
BULKHEAD TYPE



### SA713CU-X\*GT50

SMA JACK SOLDER  
PANL MOUNT TYPE  
WITH SQUARE FLANGE



### SA724CU-X\*GT50

SMA JACK SOLDER  
PANL MOUNT TYPE  
WITH NARROW FLANGE



### SA789CU-\*\*GT50

SMA JACK BULKHEAD  
CRIMP/SOLDER TYPE  
RG58U, RG141U:

**SA789CU-FGGT50**

**SA789CU-FNGT50**

RG174U, RG316U:

**SA789CU-LGGT50**

**SA789CU-LNGT50**

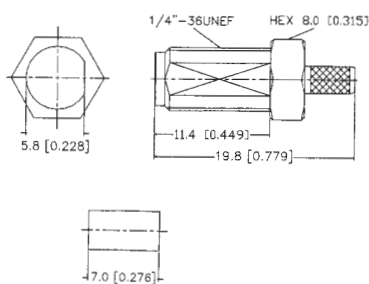


## SMA FEMALE CONNECTORS (2)

### SA778CU-\*\*GT50

SMA JACK CRIMP  
BULKHEAD TYPE  
RG58U, RG141U:

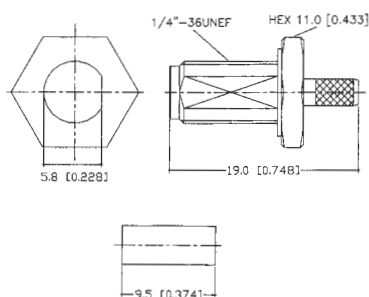
**SA778CU-FGGT50**  
**SA778CU-FNGT50**  
RG174U, RG316U:  
**SA778CU-LGGT50**  
**SA778CU-LNGT50**



### SA781CU-\*\*GT50

SMA JACK CRIMP  
BULKHEAD TYPE  
**(WATERPROOF)**  
RG58U, RG141U:

**SA781CU-FGGT50**  
**SA781CU-FNGT50**  
RG174U, RG316U:  
**SA781CU-LGGT50**  
**SA781CU-LNGT50**

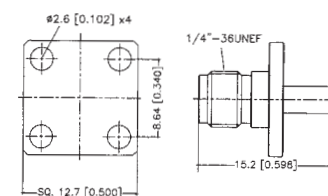


### SA775CU-\*\*GT50

SMA JACK PANEL MOUNT  
WITH SQUARE FLANGE  
FOR SEMI-RIGID CABLE  
SEMI-RIGID .141\"/>

**SA775CU-R1GGT50**  
**SA775CU-R1NGT50**  
SEMI-RIGID .085\"/>

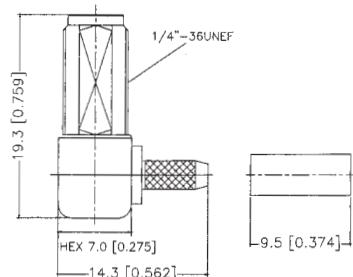
**SA775CU-R2GGT50**  
**SA775CU-R2NGT50**



### SA782CU-\*\*GT50

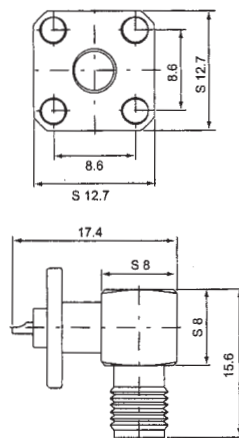
SMA JACK BULKHEAD CRIMP  
RIGHT ANGLE TYPE  
RG58U, RG141U:

**SA782CU-FGGT50**  
**SA782CU-FNGT50**  
RG174U, RG316U:  
**SA782CU-LGGT50**  
**SA782CU-LNGT50**



### SA737CU-X\*GT50

SMA JACK R/A SOLDER  
PANEL MOUNT TYPE

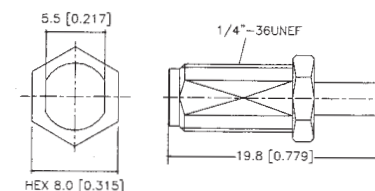


### SA776CU-\*\*GT50

SMA JACK BULKHEAD SOLDER  
FOR SEMI-RIGID CABLE  
SEMI-RIGID .141\"/>

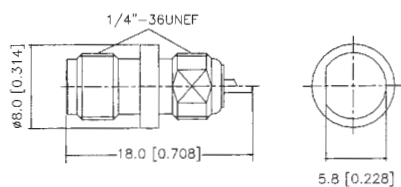
**SA776CU-R1GGT50**  
**SA776CU-R1NGT50**  
SEMI-RIGID .085\"/>

**SA776CU-R2GGT50**  
**SA776CU-R2NGT50**



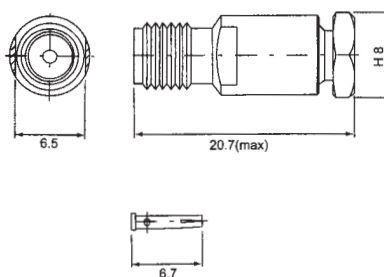
### SA783CU-X\*GT50

SMA JACK BULKHEAD  
FRONT MOUNT TYPE



### SA787CU-L\*GT50

SMA JACK SCREW-ON TYPE  
FOR RG174U, RG316U CABLE

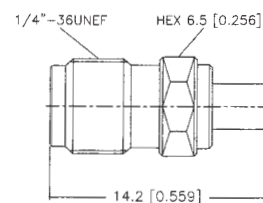


### SA774CU-\*\*GT50

SMA JACK SOLDER  
FOR SEMI-RIGID CABLE  
SEMI-RIGID .141\"/>

**SA774CU-R1GGT50**  
**SA774CU-R1NGT50**  
SEMI-RIGID .085\"/>

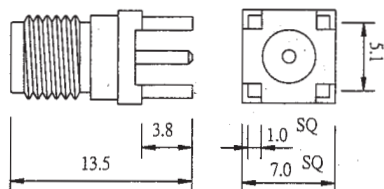
**SA774CU-R2GGT50**  
**SA774CU-R2NGT50**



## SMA FEMALE CONNECTORS (3)

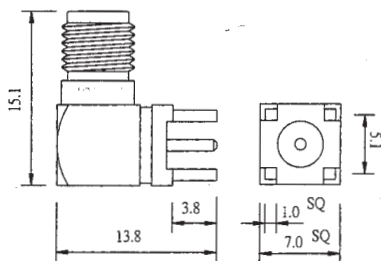
### SA727CU-X\*GT50

SMA JACK  
PCB MOUNT TYPE



### SA728CU-X\*GT50

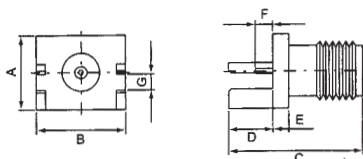
SMA JACK RIGHT ANGLE  
PCB MOUNT TYPE



### SA797CU-X\*GT50

### SA798CU-X\*GT50

SMA JACK STRAIGHT  
PCB MOUNT TYPE



PART NO.	A	B	C	D	E	F	G
SA797CU	7.9	9.5	14.3	4.8	1.65	1.9	1.73
SA798CU	7.9	9.5	14.3	4.8	1.65	1.9	1.22

### SA729CU-\*\*GT50

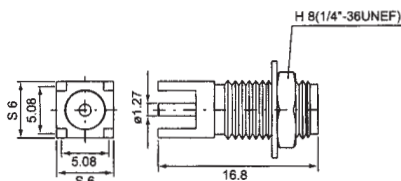
SMA JACK BULKHEAD  
FEEDTHROUGH TYPE  
RG405U:

SA729CU-U8GGT50  
SA729CU-U8NGT50



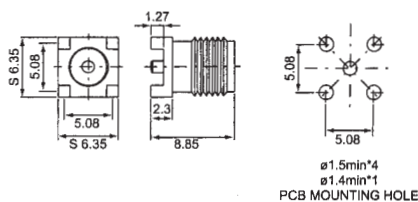
### SA794CU-X\*GT50

SMA JACK STRAIGHT  
PCB MOUNT TYPE



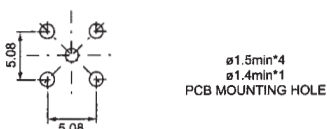
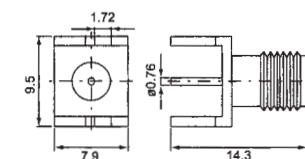
### SA795CU-X\*GT50

SMA JACK STRAIGHT  
PCB MOUNT TYPE



### SA796CU-X\*GT50

SMA JACK STRAIGHT  
PCB MOUNT TYPE



### SA801CU-X\*GT50

### SA802CU-X\*GT50

### SA803CU-X\*GT50

### SA804CU-X\*GT50

### SA805CU-X\*GT50

### SA806CU-X\*GT50

### SA807CU-X\*GT50

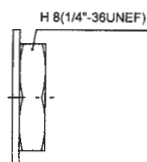
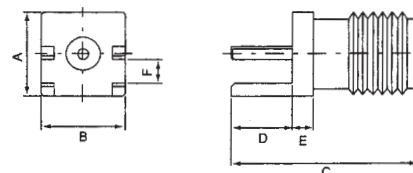
### SA808CU-X\*GT50

### SA809CU-X\*GT50

### SA810CU-X\*GT50

### SA811CU-X\*GT50

SMA JACK STRAIGHT  
PCB MOUNT TYPE



**NUT & WASHER**

PART NO.	A	B	C	D	E	F
SA801CU	6.35	6.35	14.2	4.7	1.6	1.73
SA802CU	6.35	6.35	26.3	4.7	1.6	1.73
SA803CU	8	9.5	13.5	4	1.5	0.95
SA804CU	6.35	6.35	17.5	4.7	1.6	1.73
SA805CU	7.9	9.5	17.45	4.75	1.65	1.73
SA806CU	7.9	9.5	14.25	4.75	1.65	1.73
SA807CU	8	9.5	17.5	4.7	1.6	0.95
SA808CU	6.35	6.35	14.2	4.7	1.6	1.22
SA809CU	7.9	9.5	14.3	5.4	1.3	0.9
SA810CU	7	7	13.5	2.5	1	1.7
SA811CU	6.35	6.35	17.5	4.7	1.6	1.22

WITH NUT & WASHER:

**SA804, SA805, SA807, SA811**

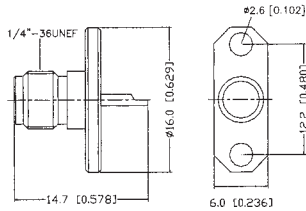
W/O NUT & WASHER:

**THE OTHERS**

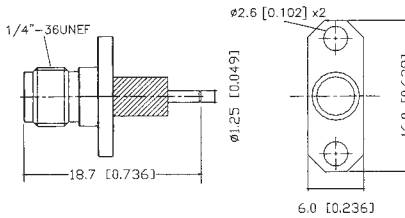


## SMA FEMALE CONNECTORS (4)

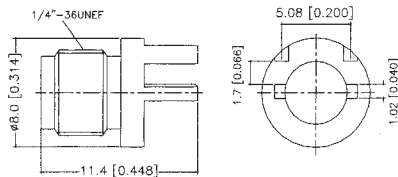
**SA741CU-X\*GT50**  
SMA JACK PANEL MOUNT  
WITH NARROW FLANGE



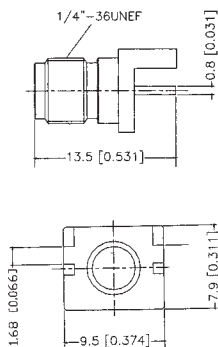
**SA745CU-X\*GT50**  
SMA JACK PANEL MOUNT  
WITH NARROW FLANGE  
& EXPOSED TEFLON



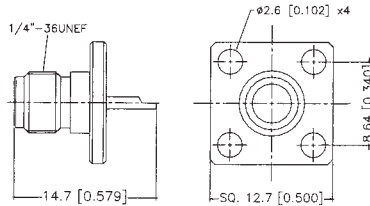
**SA779CU-X\*GT50**  
SMA JACK  
END LAUNCH TYPE



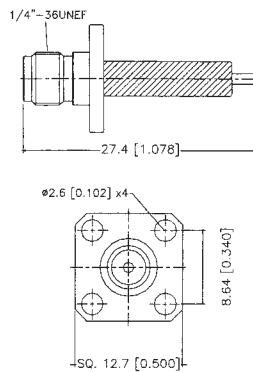
**SA784CU-X\*GT50**  
SMA JACK  
END LAUNCH TYPE



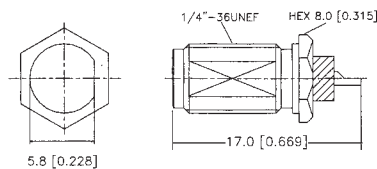
**SA740CU-X\*GT50**  
SMA JACK PANEL MOUNT  
WITH SQUARE FLANGE



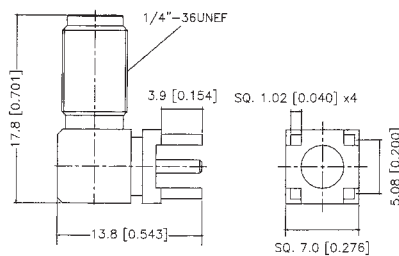
**SA744CU-X\*GT50**  
SMA JACK PANEL MOUNT  
WITH SQUARE FLANGE  
& EXPOSED TEFLON



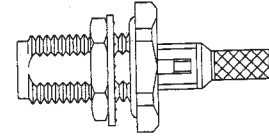
**SA777CU-X\*GT50**  
SMA JACK BULKHEAD  
REAR MOUNT TYPE



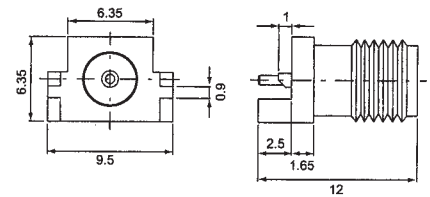
**SA785CU-X\*GT50**  
SMA JACK BULKHEAD  
R/A PCB MOUNT TYPE



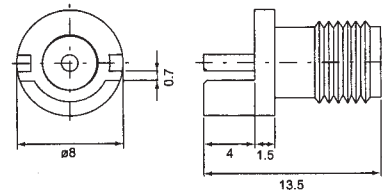
**SA789CU-X\*GT50**  
SMA JACK BULKHEAD CRIMP  
FOR CABLE DIA. UNDER 3.0MM



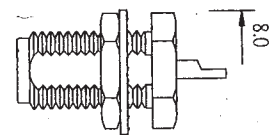
**SA799CU-X\*GT50**  
SMA JACK STRAIGHT  
PCB MOUNT TYPE



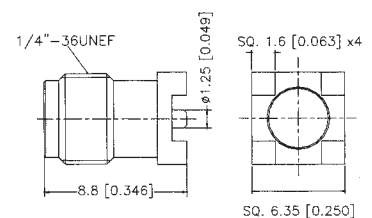
**SA800CU-X\*GT50**  
SMA JACK STRAIGHT  
PCB MOUNT TYPE



**SA790CU-X\*GT50**  
SMA JACK SOLDER  
BULKHEAD TYPE

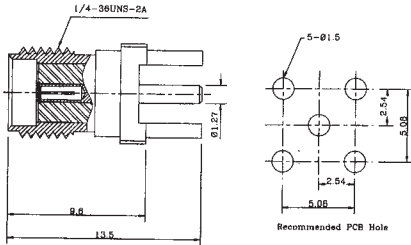


**SA773CU-X\*GT50**  
SMA JACK SMT  
PCB MOUNT TYPE

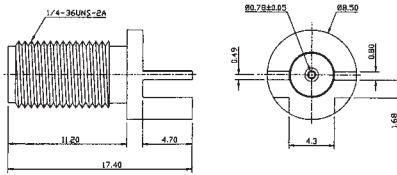


## SMA FEMALE CONNECTORS (5)

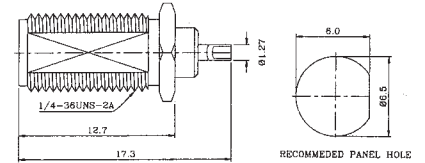
**SA832CU-XGGT50**  
SMA PCB MOUNT JACK



**SA838CU-XGGT50**  
SMA EDGE MOUNT JACK

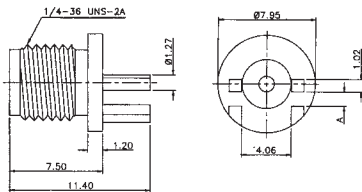


**SA842CU-XGGT50**  
SMA BULKHEAD RECEPTACLE JACK WITH NUT & WASHER

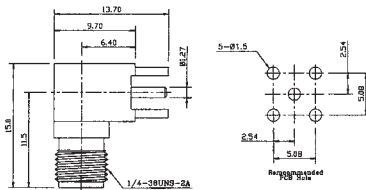


**SA834CU-XGGT50**  
SMA EDGE MOUNT JACK  
DIM. A=1.6MM

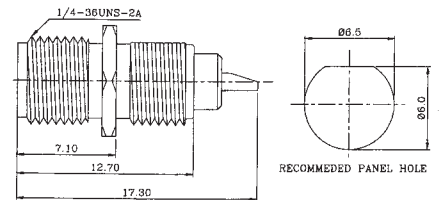
**SA835CU-XGGT50**  
SMA EDGE MOUNT JACK  
DIM. A=0.8MM



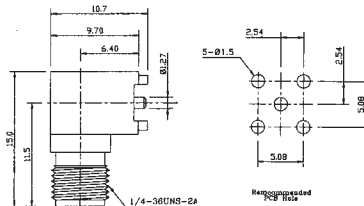
**SA839CU-XGGT50**  
SMA PCB MOUNT JACK  
RIGHT ANGLE TYPE



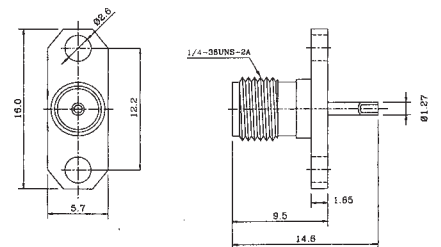
**SA843CU-XGGT50**  
SMA BULKHEAD RECEPTACLE JACK WITH NUT & WASHER



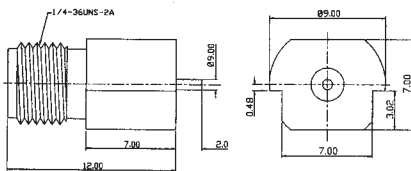
**SA840CU-XGGT50**  
SMA PCB MOUNT JACK  
RIGHT ANGLE TYPE



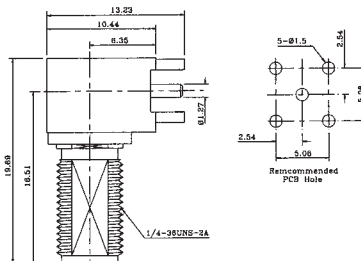
**SA847CU-XGGT50**  
SMA PANEL MOUNT JACK  
WITH NARROW FLANGE



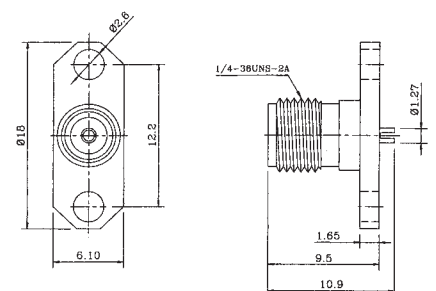
**SA836CU-XGGT50**  
SMA EDGE MOUNT JACK



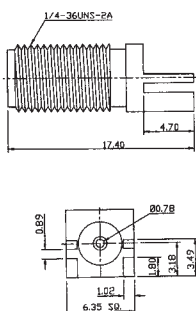
**SA841CU-XGGT50**  
SMA PCB MOUNT JACK  
R/A BULKHEAD TYPE



**SA848CU-XGGT50**  
SMA PANEL MOUNT JACK  
WITH NARROW FLANGE



**SA837CU-XGGT50**  
SMA EDGE MOUNT JACK





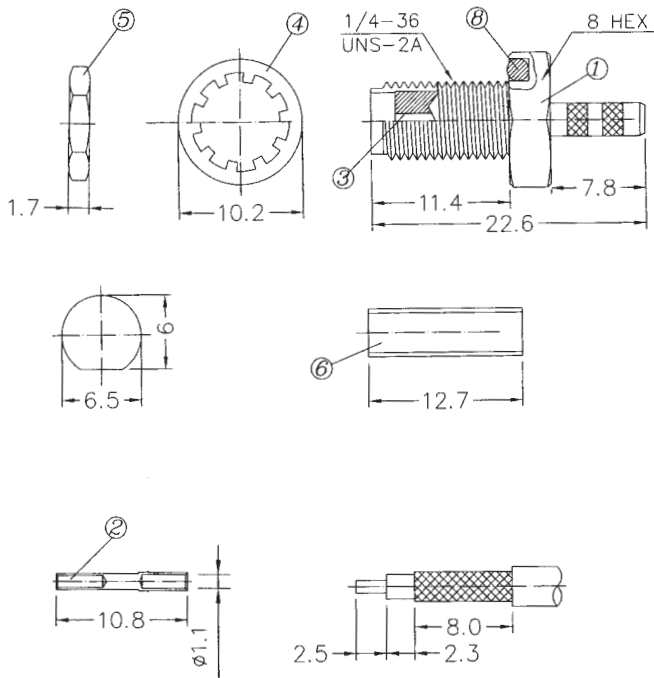




## SMA FEMALE CONNECTORS (8)

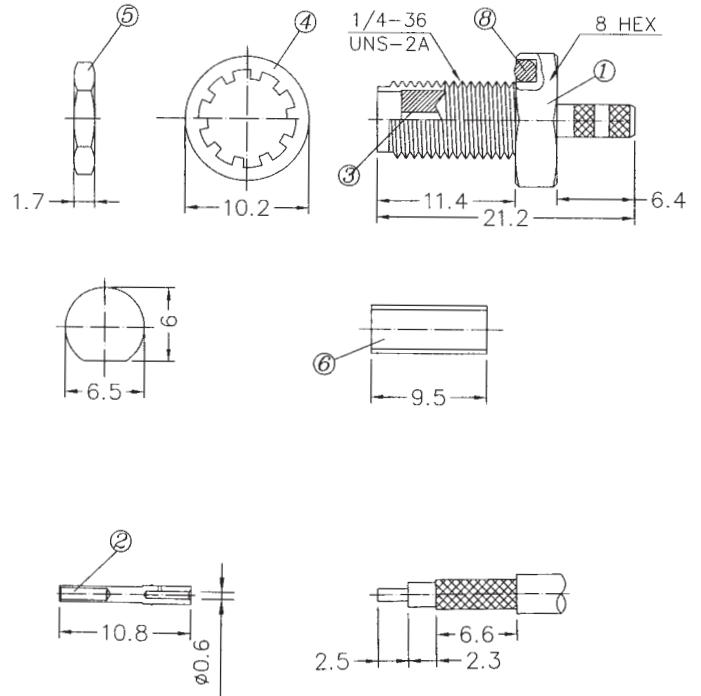
### SA826CU-FGGT50

SMA JACK BULKHEAD CRIMP TYPE  
FOR RG58/U, RG141/U CABLE



### SA826CU-LGGT50

SMA JACK BULKHEAD CRIMP TYPE  
FOR RG174/U, RG316/U CABLE



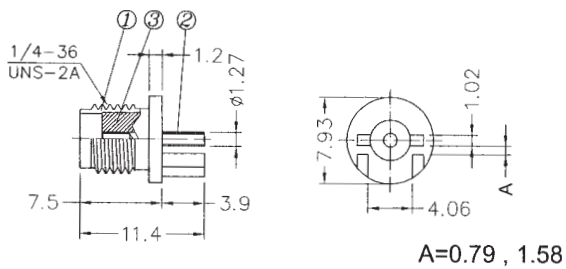
### SA823CU-XGGT50

A=0.79MM, L=11.4MM

### SA824CU-XGGT50

A=1.58MM, L=11.4MM

SMA JACK PCB MOUNT TYPE



#### MATERIAL AND FINISH

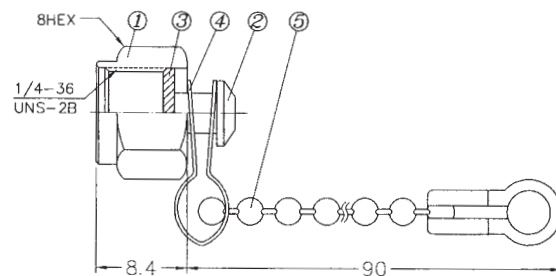
- ① BRASS/ 5u" GOLDEN PLATED
- ② BERYLLIUM COPPER/ 30u" GOLD
- ③ TEFLON

### SA830CU-XNXX

PROTECTIVE CAP FOR  
SMA JACK WITH CHAIN

### SA831CU-XNXX

PROTECTIVE CAP FOR  
SMA JACK WITHOUT CHAIN



#### MATERIAL AND FINISH

- ① ② ⑤ BRASS/ NICKEL PLATED
- ③ TEFLON
- ④ STAINLESS STEEL