

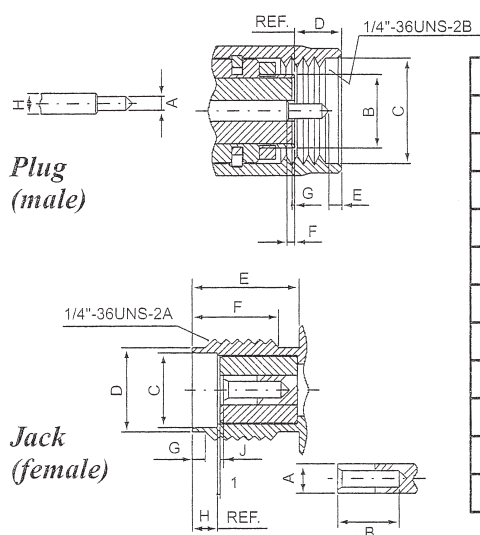
SMA SERIES CONNECTORS & ADAPTERS

50 Ohm 0-18GHz

SMA series connectors are semi-precision, subminiature, high frequency connectors and offer reliable broadband performance DC to 18GHz with low reflection and constant 50-Ohm impedance.

The main features are high mechanical strength, high durability and low VSWR. Developed design principles, careful manufacturing at all stages and a thorough quality assurance organization are the basis for the well know quality have made the SMA are widely in the microwave community. Among typical applications are components, such as dividers, mixers, amplifiers, trimmers and attenuators. SMA connectors are also used to provide interconnections from printed circuit board strip lines to coaxial cable.

Interface Dimensions:



	Plug		Jack	
	min.	max.	min.	max.
A	0.90/.036	0.94/.037	1.24/.049	1.29/.051
B	-	4.59/.181	2.67/.105	-
C	6.35/.250	-	5.28/.208	5.49/.216
D	-	3.34/.135	4.59/.181	4.67/.184
E	0.38/.015	1.14/.045	5.54/.218	-
F	0.00/.000	0.25/.010	4.32/.170	-
G	0.00/.000	0.18/.007	0.38/.015	1.14/.045
H	1.24/.049	1.29/.051	1.88/.074	1.98/.078
I	-	-	0.00/.000	0.25/.010
J	-	-	0.00/.000	0.18/.007

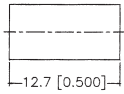
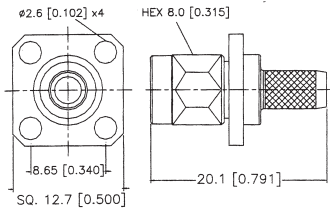
Electrical:

Impedance	50 ohm
Frequency Range	0 to 18.0 GHz *RG-402 & RG-405 semi-rigid cable-0 to 18.0GHz *flexible cable→max operation frequency of cable per MIL-C-17(12.4GHz max)
VSWR	RG178U→1.2+0.025 f max GHz(Straight) →1.2+0.03 f max GHz(Right angle)
	RG316U→1.15+0.02 f max GHz(Straight) →1.15+0.03 f max GHz(Right angle)
	RG412U→1.15+0.01 f max GHz(Straight) →1.15+0.02 f max GHz(Right angle)
	RG402U→1.05+0.01 f max GHz(Straight) →1.1+0.01 f max GHz(Right angle)
	RG405U→1.07+0.01 f max GHz(Straight) →1.1+0.01 f max GHz(Right angle)
Insertion Loss	0.06dB maximum $\sqrt{f} \times \text{GHz}$ @ 6GHz

SMA MALE CONNECTORS (1)

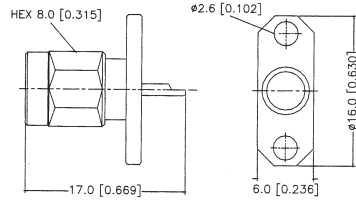
SA769CU-**GT50

SMA PLUG CRIMP
PANEL MOUNT TYPE
WITH SQUARE FLANGE
RG174U, RG316U:
SA769CU-LGGT50
SA769CU-LNGT50



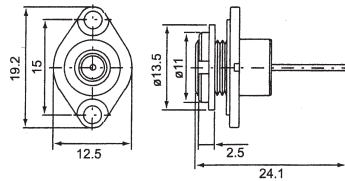
SA739CU-X*GT50

SMA PLUG PANEL MOUNT
WITH NARROW FLANGE



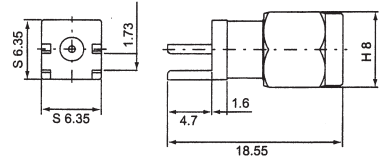
SA788CU-X*GT50

SMA PLUG SOLDER PANEL
WITH NARROW FLANGE



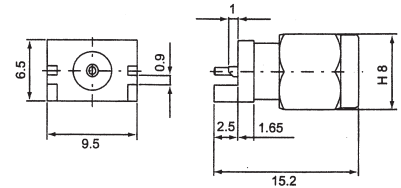
SA792CU-X*GT50

SMA PLUG STRAIGHT
PCB MOUNT TYPE



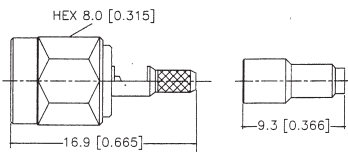
SA793CU-X*GT50

SMA PLUG STRAIGHT
PCB MOUNT TYPE



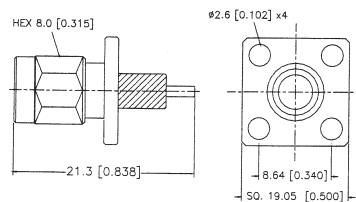
SA771CU-**GT50

SMA PLUG
CRIMP/SOLDER TYPE
RG58U, RG141U:
SA771CU-FGGT50
SA771CU-FNGT50
RG174U, RG316U:
SA771CU-LGGT50
SA771CU-LNGT50



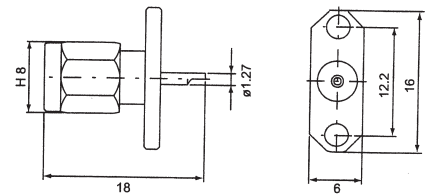
SA742CU-X*GT50

SMA PLUG PANEL MOUNT
WITH SQUARE FLANGE
& EXPOSED TEFLON



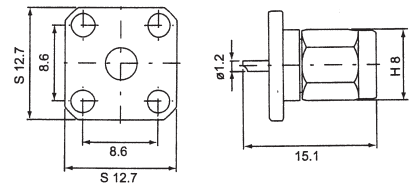
SA714CU-X*GT50

SMA PLUG SOLDER
PANEL MOUNT TYPE
WITH NARROW FLANGE



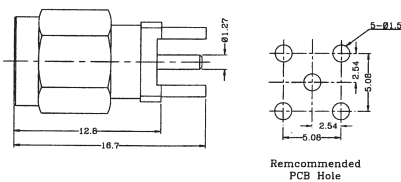
SA712CU-X*GT50

SMA PLUG SOLDER
PANEL MOUNT TYPE
WITH SQUARE FLANGE



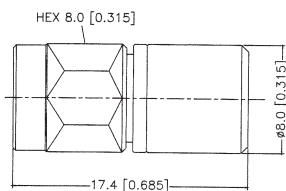
SA833CU-XGGT50

SMA PCB MOUNT PLUG



SA772CU-XGGT50

SMA MALE TERMINATOR



SMA MALE CONNECTORS (2)

SA703CU-**GT50

SMA PLUG CRIMP TYPE
RG58U, RG141U:

SA703CU-FGGT50

SA703CU-FNGT50

RG142, RG55U:

SA703CU-KGGT50

SA703CU-KNGT50

RG223U:

SA703CU-PGGT50

SA703CU-PNGT50

RG174U, RG316U:

SA703CU-LGGT50

SA703CU-LNGT50



SA702CU-**GT50

SMA PLUG CRIMP
RIGHT ANGLE TYPE

RG58U, RG141U:

SA702CU-FGGT50

SA702CU-FNGT50

RG223U:

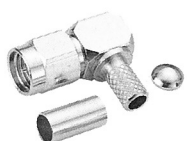
SA702CU-PGGT50

SA702CU-PNGT50

RG174U, RG316U:

SA702CU-LGGT50

SA702CU-LNGT50



SA701CU-**GT50

SAM PLUG CLAMP TYPE
RG58U, RG141U:

SA701CU-FGGT50

SA701CU-FNGT50

RG174U, RG316U:

SA701CU-LGGT50

SA701CU-LNGT50

RG400U:

SA701CU-40GGT50

SA701CU-40NGT50



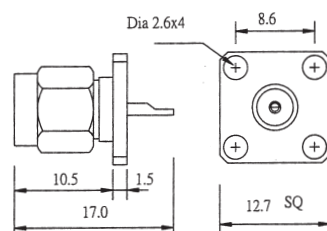
SA715CU-X*GT50

SMA PLUG SOLDER
BULKHEAD TYPE



SA726CU-X*GT50

SMA PLUG SOLDER
PANEL MOUNT TYPE



SA768CU-**GT50

SMA PLUG SOLDER
FOR SEMI-RIGID CABLE
SEMI-RIGID .141" CABLE:

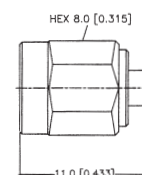
SA768CU-R1GGT50

SA768CU-R1NGT50

SEMI-RIGID .085" CABLE:

SA768CU-R2GGT50

SA768CU-R2NGT50



SA780CU-**GT50

SMA PLUG R/A SOLDER
FOR SEMI-RIGID CABLE
SEMI-RIGID .141" CABLE:

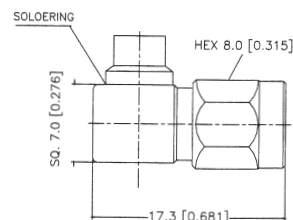
SA780CU-R1GGT50

SA780CU-R1NGT50

SEMI-RIGID .085" CABLE:

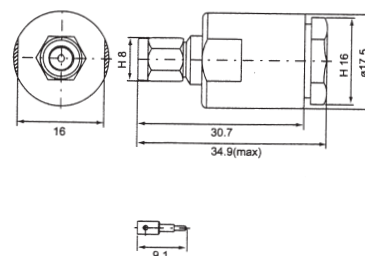
SA780CU-R2GGT50

SA780CU-R2NGT50



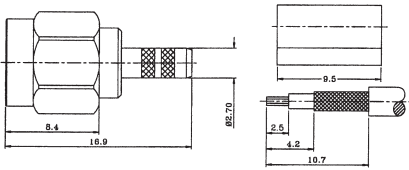
SA786CU-X*GT50

SMA PLUG
SCREW-ON TYPE

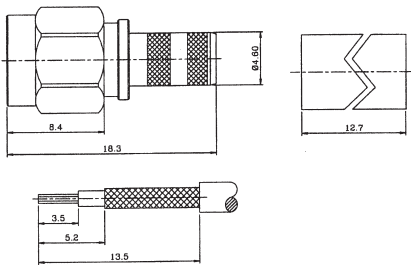


SMA MALE CONNECTORS (3)

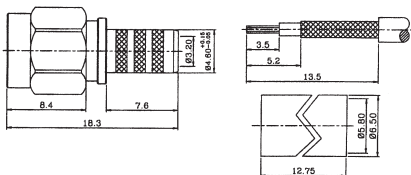
SA859CU-LGGT50
SMA PLUG CRIMP TYPE
FOR RG174,188,316/U CABLE



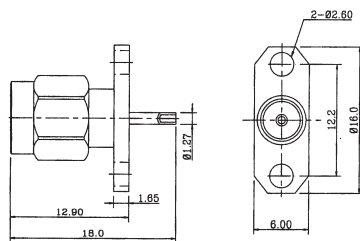
SA859CU-FGGT50
SMA PLUG CRIMP TYPE
FOR RG58,141/U CABLE



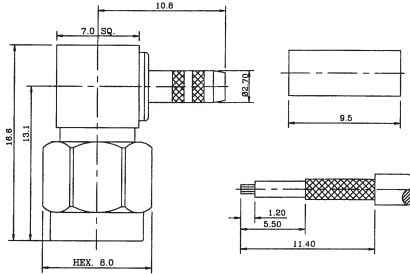
SA859CU-40GGT50
SMA PLUG CRIMP TYPE
FOR RG400/U CABLE



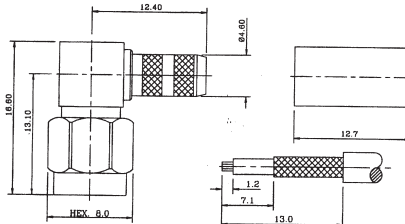
SA844CU-XGGT50
SMA PANEL MOUNT PLUG
WITH NARROW FLANGE



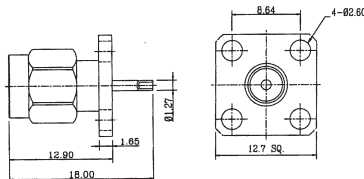
SA860CU-LGGT50
SMA PLUG R/A CRIMP TYPE
FOR RG174,188,316/U CABLE



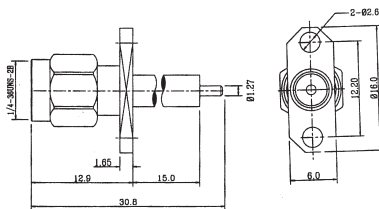
SA860CU-FGGT50
SMA PLUG R/A CRIMP TYPE
FOR RG58,141/U CABLE



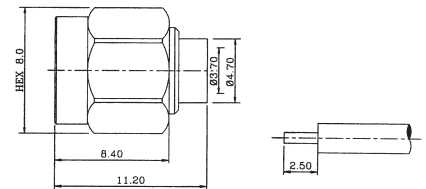
SA845CU-XGGT50
SMA PANEL MOUNT PLUG
WITH SQUARE FLANGE



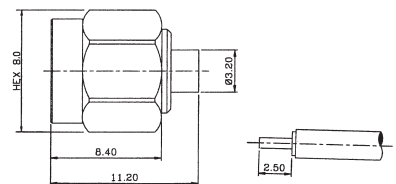
SA846CU-XGGT50
SMA PANEL MOUNT PLUG
WITH NARROW FLANGE
& EXPOSED TEFLON



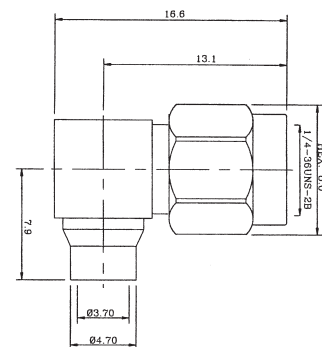
SA864CU-R1GGT50
SMA PLUG SOLDER TYPE
FOR SEMI-RIGID .141" CABLE



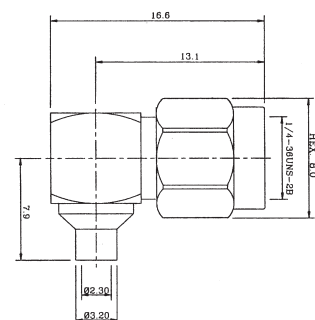
SA864CU-R2GGT50
SMA PLUG SOLDER TYPE
FOR SEMI-RIGID .085" CABLE



SA865CU-R1GGT50
SMA PLUG R/A SOLDER TYPE
FOR SEMI-RIGID .141" CABLE



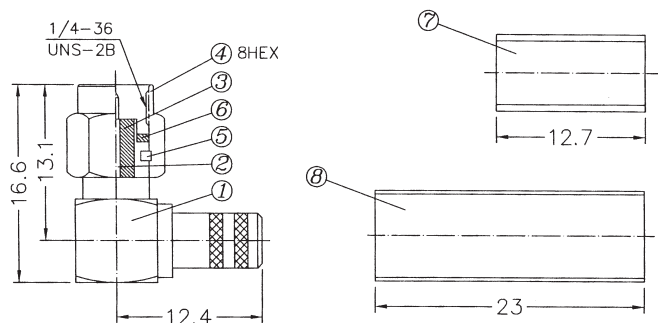
SA865CU-R2GGT50
SMA PLUG R/A SOLDER TYPE
FOR SEMI-RIGID .085" CABLE



SMA MALE CONNECTORS (4)

SA735CU-FGGT50

SMA PLUG CRIMP
RIGHT ANGLE TYPE
FOR RG58/U, RG141/U CABLE

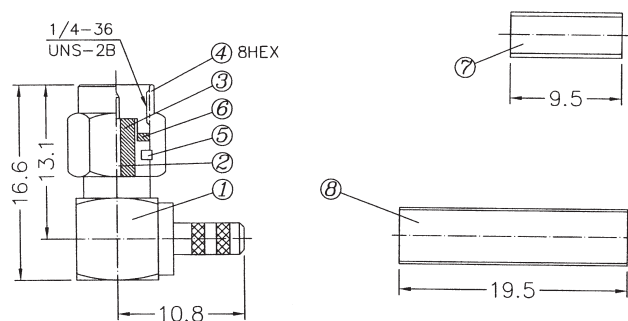


MATERIAL AND FINISH

- ①④⑦ BRASS / 5μ" GOLD PLATED
- ② COPPER / 30μ" GOLD PLATED
- ③ TEFLON
- ⑤ BERYLLIUM COPPER
- ⑥ SILICON RUBBER
- ⑧ SHRINK PLASTICS

SA735CU-LGGT50

SMA PLUG CRIMP
RIGHT ANGLE TYPE
FOR RG174/U, RG316/U CABLE

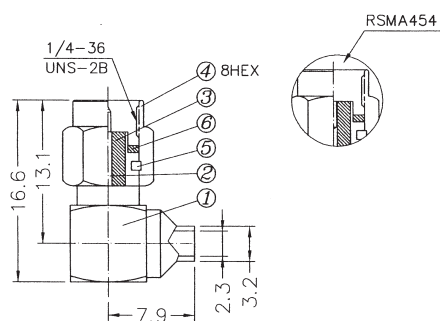


MATERIAL AND FINISH

- ①④⑦ BRASS / 5μ" GOLD PLATED
- ② COPPER / 30μ" GOLD PLATED
- ③ TEFLON
- ⑤ BERYLLIUM COPPER
- ⑥ SILICON RUBBER
- ⑧ SHRINK PLASTICS

SA820CU-R2GGT50

SMA PLUG SOLDER TYPE
FOR 0.085" SEMI-RIGID CABLE

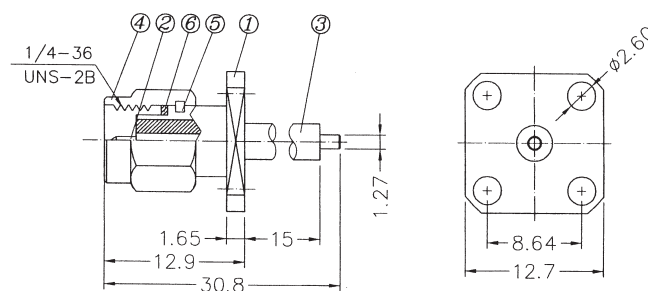


MATERIAL AND FINISH

- ①④ BRASS / 5μ" GOLD PLATED
- ② COPPER / 30μ" GOLD PLATED
- ③ TEFLON
- ⑤ BERYLLIUM COPPER
- ⑥ SILICON RUBBER

SA736CU-XGGT50

SMA PLUG PANEL MOUNT
WITH SQUARE FLANGE
& EXPOSED TEFLON



MATERIAL AND FINISH

- ①④ BRASS / 5μ" GOLD PLATED
- ② COPPER / 30μ" GOLD PLATED
- ③ TEFLON
- ⑤ BERYLLIUM COPPER
- ⑥ SILICON RUBBER