

SMB SERIES CONNECTORS & ADAPTERS

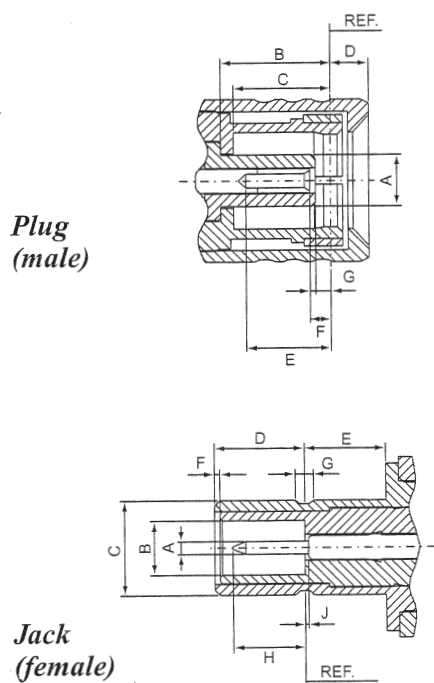
50 Ohm 0-4GHz

The SMB subminiature coaxial connectors are semi-precision and provide repeatable electrical performance to 4GHz with 50-Ohm impedance.

Its smaller physical size and snap-on coupling make the SMB as an ideal generally purpose connector where packaging density, easy of connecting and disconnecting and economy are prerequisites.

The SMB connectors are applications for telecommunications, test equipment, instrumentation and GPS.

Interface Dimensions:



	Plug		Jack	
	min.	max.	min.	max.
A	-	2.06/.081	0.48/.019	0.53/.021
B	3.58/.141	-	2.08/.082	-
C	3.58/.141	-	3.66/.144	3.71/.146
D	-	1.63/.064	3.33/.131	3.58/.141
E	2.97/.117	-	1.65/.065	-
F	0.18/.007	0.94/.037	0.00/.000	-
G	0.18/.007	-	0.69/.027	0.94/.037
H	-	-	-	2.97/.117
J	-	-	-	0.18/.007

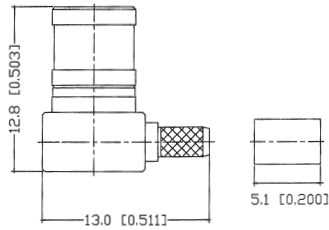
Electrical:

Impedance	50 ohm
Frequency Range	0 to 4.0 GHz
VSWR	RG-178U → 1.3+0.04 f max GHz (Straight) 1.45+0.06 f max GHz (Right angle)
	RG-316U → 1.25+0.04 f max GHz (Straight) 1.35+0.04 f max GHz (Right angle)
Insertion Loss	0.3dB max @ 1.5GHz (Straight)
	0.6dB max @ 1.5GHz (Right angle)

SMB MALE CONNECTORS (1)

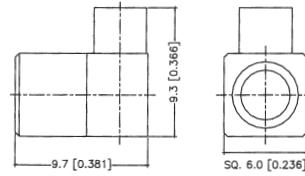
SB301CU-*GGT50

SMB PLUG CRIMP
RIGHT ANGLE TYPE
RG316U, RG174U, RG188U:
SB301CU-LGGT50



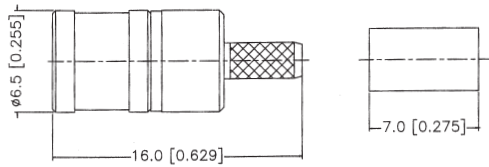
SB315CU-*GGT50

SMB PLUG SOLDER R/A
FOR SEMI-RIGID CABLE
FOR .085" CABLE:
SB315CU-R2GGT50



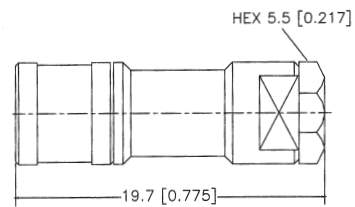
SB302CU-*GGT50

SMB PLUG CRIMP TYPE
RG174U, RG316U, RG188U:
SB302CU-LGGT50



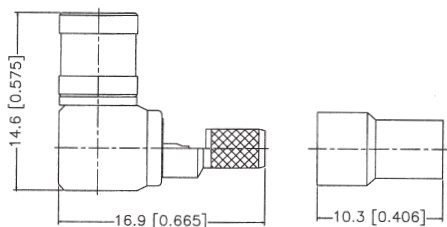
SB316CU-*GGT50

SMB PLUG CLAMP TYPE
RG316U, RG174U, RG188U:
SB316CU-LGGT50



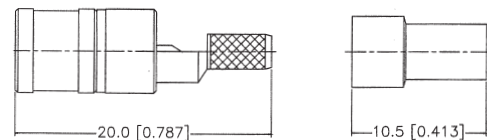
SB307CU-*GGT50

SMB PLUG CRIMP/SOLDER
RIGHT ANGLE TYPE
RG316U, RG174U, RG188U:
SB307CU-LGGT50



SB309CU-*GGT50

SMB PLUG
CRIMP/SOLDER TYPE
RG316U, RG174U, RG188U:
SB309CU-LGGT50



SMB MALE CONNECTORS (2)

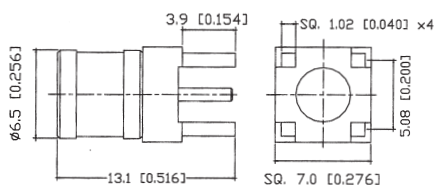
SB317CU-XGGT**

SMB PLUG WITH 4 LEGS
PCB MOUNT TYPE

PART NO.:

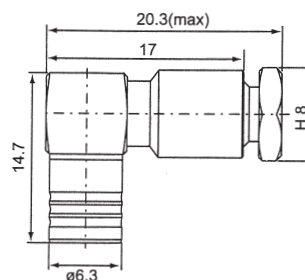
SB317CU-XGGT50

SB317CU-XGGT75



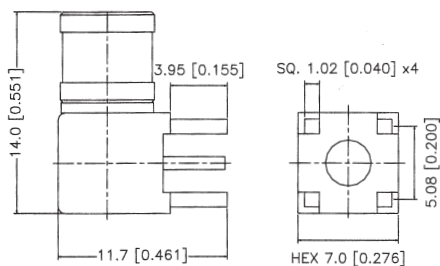
SB326CU-XGGT**

SMB PLUG RIGHT ANGLE
SCREW-ON TYPE



SB318CU-XGGT50

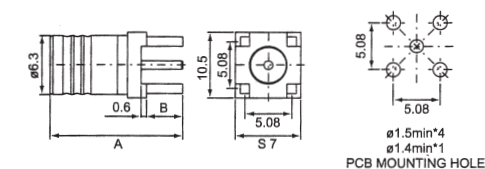
SMB PLUG WITH 4 LEGS
R/A PCB MOUNT TYPE



SB317CU-XGGT**

SB354CU-XGGT**

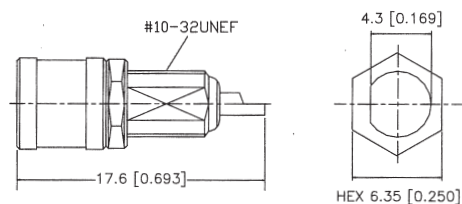
SMB PLUG STRAIGHT
PCB MOUNT TYPE



PART NO.	A	B
SB317CU	13.1	3.9
SB354CU	14.2	3.9

SB324CU-XGGT50

SMB PLUG BULKHEAD
FRONT MOUNT TYPE



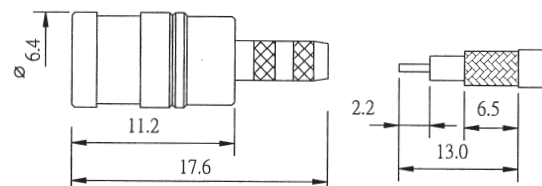
SB360CU-*GGT**

SMB PLUG CRIMP TYPE
RG174U, RG316U:

SB360CU-LGGT50

RG179U, RG187U:

SB360CU-NGGT75



SMB MALE CONNECTORS (3)

SB362CU-*GGT**

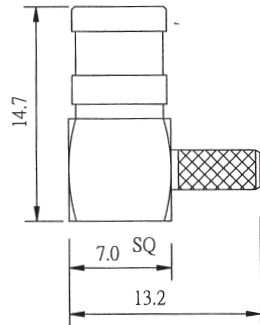
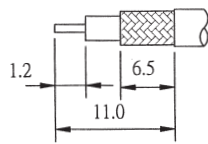
SMB PLUG CRIMP
RIGHT ANGLE TYPE
RG174U, RG316U:

SB362CU-LGGT50

RG179U, RG187U:

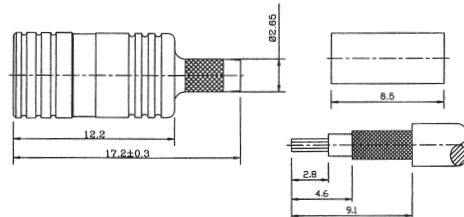
SB362CU-NGGT75

Cable Stripping



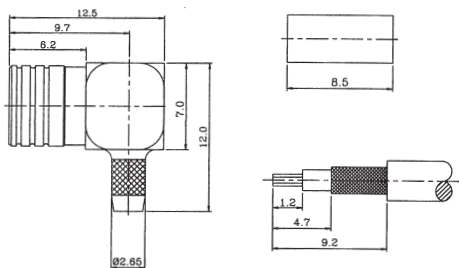
SB380CU-LGGT50

SMB PLUG CRIMP TYPE
FOR RG174, 188, 316/U CABLE



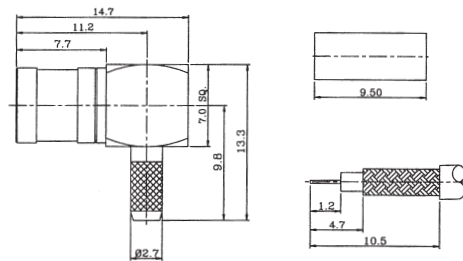
SB382CU-LGGT50

SMB PLUG CRIMP TYPE
R/A FOR RG174, 188, 316/U CABLE



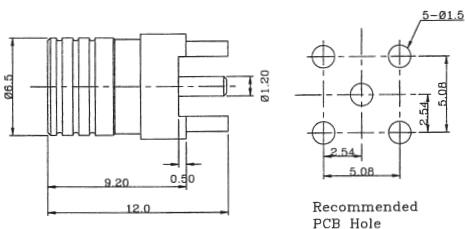
SB383CU-S8GGT50

SMB PLUG CRIMP TYPE
R/A FOR 1.5C2V CABLE



SB372CU-XGGT50

SMB PCB MOUNT PLUG



SB376CU-XGGT50

SMB PCB MOUNT PLUG
RIGHT ANGLE TYPE

