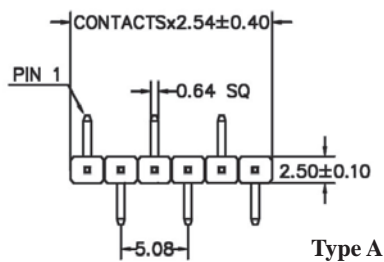
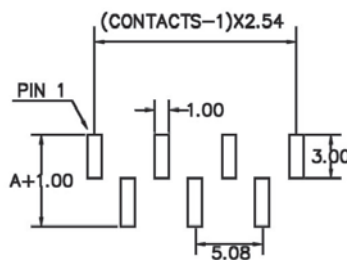


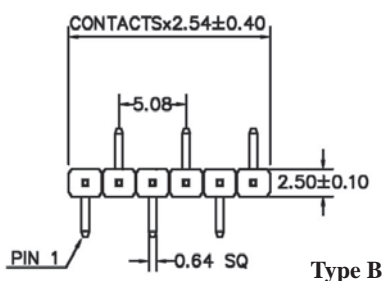
2.54MM (0.100") PIN HEADER SINGLE ROW SMT TYPE PROFILE=1.50MM



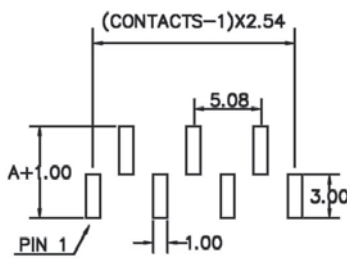
Type A



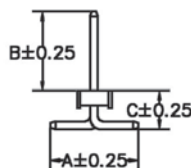
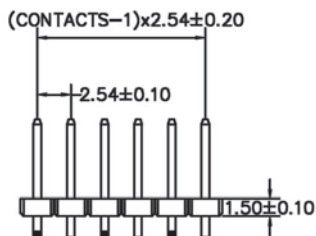
Recommended P.C.Board Layout



Type B



Recommended P.C.Board Layout



ORDERING INFORMATION:

CODE: 2 5 5 1 M 1 - A/B/C - x x x x B - x x

PLEASE GIVE US A CODE, THEN WE WILL GIVE YOU

P/N P x x x x x x x - x x x x B

1. EXTERIOR CODE:

1M1

2. DIMENSION A/B/C (UNIT: mm)

3. NO. OF CONTACTS:

002 ~ 040

4. CONTACT FINISH:

"G" FULL GOLD PLATED

"S" SELECTIVE GOLD PLATED

"T" FULL TIN PLATED

5. PCB LAYOUT TYPE:

"A" TYPE A

"B" TYPE B

6. PAD & PACKAGE OPTION:

"T" W/O PAD IN TUBE

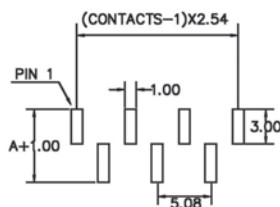
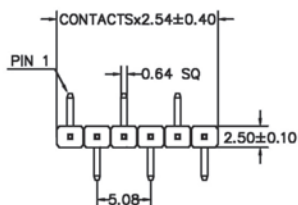
"P" WITH PAD IN TUBE

"Q" WITH PAD IN TAPE & REEL

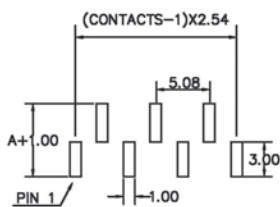
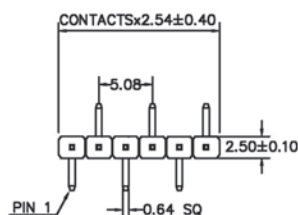
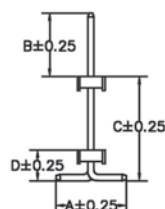
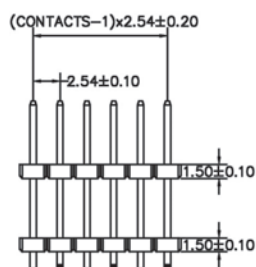
NOTE: PAD = PICK & PLACE PAD

**DIMENSIONI
SPECIALI**

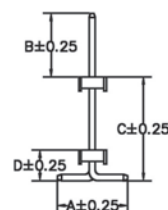
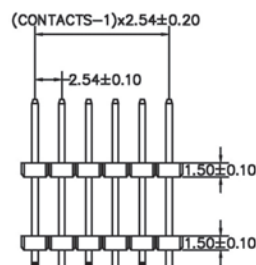
2.54MM (0.100") PIN HEADER SINGLE ROW RIGHT ANGLE DIP TYPE PROFILE=1.50MM



**Recommended P.C.Board Layout
Type A**



**Recommended P.C.Board Layout
Type B**



SPECIFICATIONS

Current Rating: 3 A

Contact Resistance: 20mΩ Max.

Insulator Resistance: 1000MΩ Min.

Withstanding Voltage: 1000V AC/Min.

Operating Temperature: -55°C to +105°C

MATERIALS

Insulator: NY6T UL94V-0, Black

Contact: Copper Alloy

All materials must be RoHS compliant.

ORDERING INFORMATION:

CODE: 2 5 5 1 M 4 - A/B/C/D - x x x x B - x x
1 2 3 4 5 6

PLEASE GIVE US A CODE, THEN WE WILL GIVE YOU

P/N P x x x x x x - x x x x B
YY MM DD 3 4

**DIMENSIONI
SPECIALI**

1. EXTERIOR CODE:

1M4

2. DIMENSION A/B/C/D (UNIT: mm)

3. NO. OF CONTACTS:

002 ~ 040

4. CONTACT FINISH:

"G" FULL GOLD PLATED

"S" SELECTIVE GOLD PLATED

"T" FULL TIN PLATED

5. PCB LAYOUT TYPE:

"A" TYPE A

"B" TYPE B

6. PAD & PACKAGE OPTION:

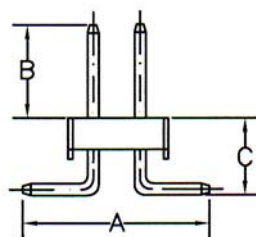
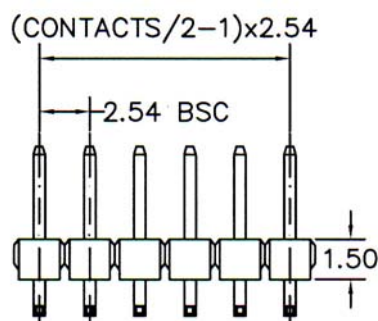
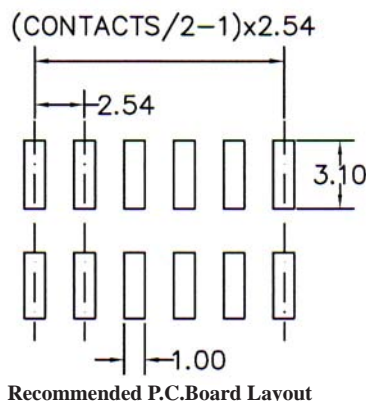
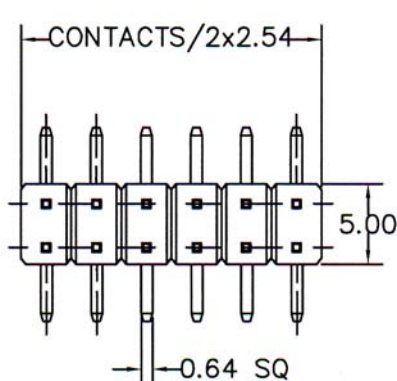
"T" W/O PAD IN TUBE

"P" WITH PAD IN TUBE

"Q" WITH PAD IN TAPE & REEL

NOTE: PAD = PICK & PLACE PAD

2.54MM(0.100") PIN HEADER DOUBLE ROW SMT TYPE PROFILE=1.50MM



SPECIFICATIONS

Current Rating: 3 Amperes
Insulation Resistance: 1000MΩ Min
Dielectric Withstanding: 600V AC/DC
Contact Resistance: 20mΩ Max.
Operating Temperature: -40°C to +105°C

MATERIALS

Contact Material: Copper Alloy
Contact Plating: Gold / Tin over Nickel
Insulator: Glass Filled Polyester (UL 94V-0)
 Nylon-6T
 All materials must be RoHS compliant.

ORDERING INFORMATION:

CODE: 2 6 1 $\frac{2}{1}$ M 1 - $\frac{A/B/C}{2}$ - $\frac{x}{3} \frac{x}{4} \frac{x}{4}$ B - $\frac{x}{5}$

PLEASE GIVE US A CODE, THEN WE WILL GIVE YOU

P/N P $\frac{x}{3} \frac{x}{4} \frac{x}{4} \frac{x}{4}$ x - $\frac{x}{3} \frac{x}{4} \frac{x}{4}$ B
 YY MM DD

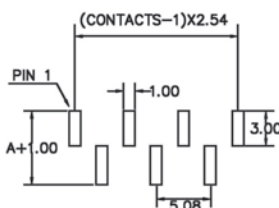
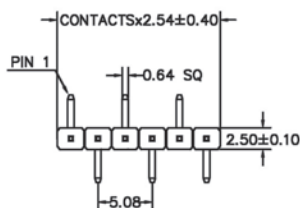
1. EXTERIOR CODE:
2M1
2. DIMENSION A/B/C (UNIT: mm)
3. NO. OF CONTACTS:
004 ~ 080
4. CONTACT FINISH:
"G" FULL GOLD PLATED
"S" SELECTIVE GOLD PLATED
"T" FULL TIN PLATED

5. PAD & PACKAGE OPTION:
"T" W/O PAD IN TUBE
"P" WITH PAD IN TUBE
"Q" WITH PAD IN TAPE & REEL

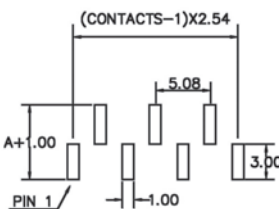
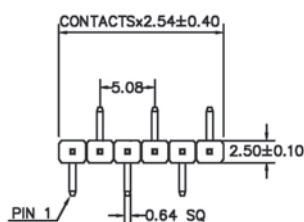
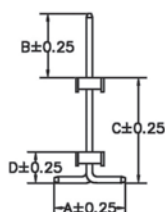
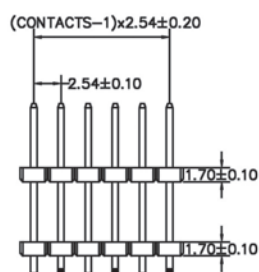
NOTE: PAD = PICK & PLACE PAD

**DIMENSIONI
SPECIALI**

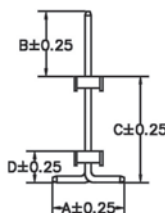
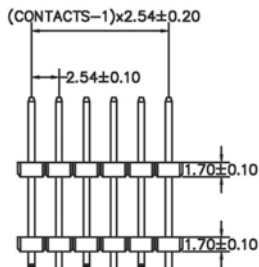
2.54MM (0.100") PIN HEADER SINGLE ROW RIGHT ANGLE DIP TYPE PROFILE=1.70MM



Recommended P.C.Board Layout
Type A



Recommended P.C.Board Layout
Type B



SPECIFICATIONS

Current Rating: 3 A

Contact Resistance: 20mΩ Max.

Insulator Resistance: 1000MΩ Min.

Withstanding Voltage: 1000V AC/Min.

Operating Temperature: -55°C to +105°C

MATERIALS

Insulator: NY6T UL94V-0, Black

Contact: Copper Alloy

All materials must be RoHS compliant.

ORDERING INFORMATION:

CODE: 2 5 7 1 M 4 - A/B/C/D - x x x x B - x x
1 2 3 4 5 6

PLEASE GIVE US A CODE, THEN WE WILL GIVE YOU

P/N P x x x x x x - x x x x B
YY MM DD 3 4

1. EXTERIOR CODE:

1M4

2. DIMENSION A/B/C/D (UNIT: mm)

3. NO. OF CONTACTS:

002 ~ 040

4. CONTACT FINISH:

"G" FULL GOLD PLATED

"S" SELECTIVE GOLD PLATED

"T" FULL TIN PLATED

5. PCB LAYOUT TYPE:

"A" TYPE A

"B" TYPE B

6. PAD & PACKAGE OPTION:

"T" W/O PAD IN TUBE

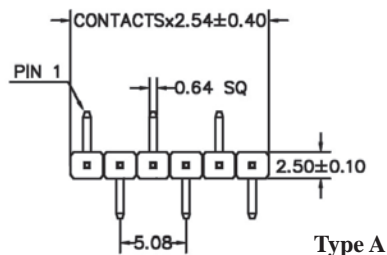
"P" WITH PAD IN TUBE

"Q" WITH PAD IN TAPE & REEL

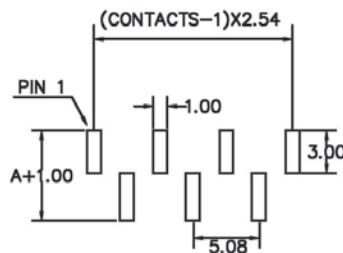
NOTE: PAD = PICK & PLACE PAD

**DIMENSIONI
SPECIALI**

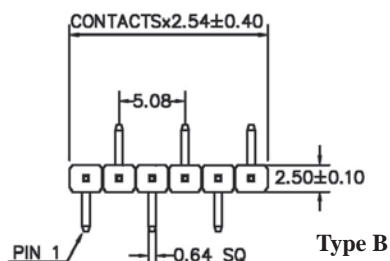
2.54MM (0.100") PIN HEADER SINGLE ROW SMT TYPE PROFILE=1.70MM



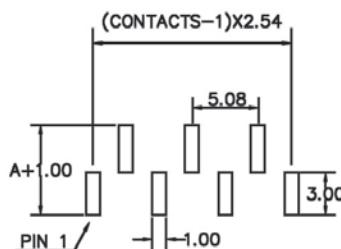
Type A



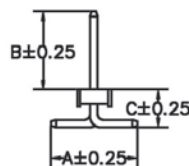
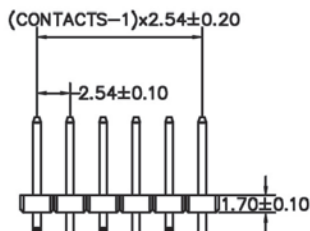
Recommended P.C.Board Layout



Type B



Recommended P.C.Board Layout



ORDERING INFORMATION:

CODE: 2 5 7 1 M 1 - A/B/C - x x x x B - x x

PLEASE GIVE US A CODE, THEN WE WILL GIVE YOU

P/N P x x x x x x x - x x x x B

1. EXTERIOR CODE:

1M1

2. DIMENSION A/B/C (UNIT: mm)

3. NO. OF CONTACTS:

002 ~ 040

4. CONTACT FINISH:

"G" FULL GOLD PLATED

"S" SELECTIVE GOLD PLATED

"T" FULL TIN PLATED

5. PCB LAYOUT TYPE:

"A" TYPE A

"B" TYPE B

6. PAD & PACKAGE OPTION:

"T" W/O PAD IN TUBE

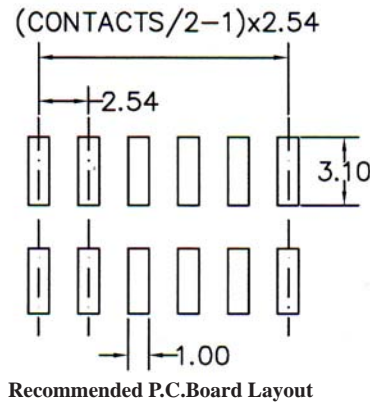
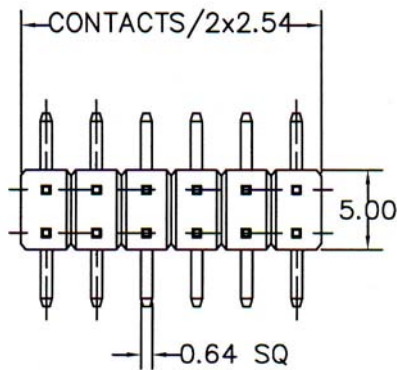
"P" WITH PAD IN TUBE

"Q" WITH PAD IN TAPE & REEL

NOTE: PAD = PICK & PLACE PAD

**DIMENSIONI
SPECIALI**

2.54MM(0.100") PIN HEADER DOUBLE ROW SMT TYPE PROFILE=1.70MM



SPECIFICATIONS

Current Rating: 3 Amperes

Insulation Resistance: 1000MΩ Min

Dielectric Withstanding: 600V AC/DC

Contact Resistance: 20mΩ Max.

Operating Temperature: -40°C to +105°C

MATERIALS

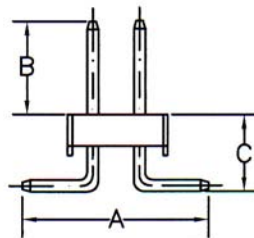
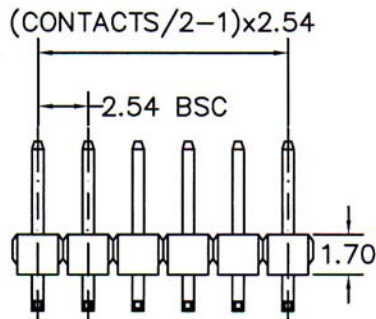
Contact Material: Copper Alloy

Contact Plating: Gold / Tin over Nickel

Insulator: Glass Filled Polyester (UL 94V-0)

Nylon-6T

All materials must be RoHS compliant.



ORDERING INFORMATION:

CODE: $2 \ 6 \ 2 \ \frac{2}{1} \ M \ 1 - \frac{A/B/C}{2} - \frac{x \ x \ x \ x}{3 \ 4} B - \frac{x}{5}$

PLEASE GIVE US A CODE, THEN WE WILL GIVE YOU

P/N $P \frac{x \ x \ x \ x \ x \ x}{Y \ Y \ M \ M \ D \ D} - \frac{x \ x \ x \ x}{3 \ 4} B$

1. EXTERIOR CODE:

2M1

2. DIMENSION A/B/C (UNIT: mm)

3. NO. OF CONTACTS:

004 ~ 080

4. CONTACT FINISH:

"G" FULL GOLD PLATED

"S" SELECTIVE GOLD PLATED

"T" FULL TIN PLATED

5. PAD & PACKAGE OPTION:

"T" W/O PAD IN TUBE

"P" WITH PAD IN TUBE

"Q" WITH PAD IN TAPE & REEL

NOTE: PAD = PICK & PLACE PAD

**DIMENSIONI
SPECIALI**