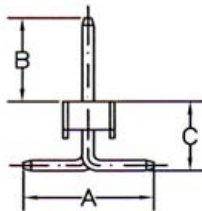
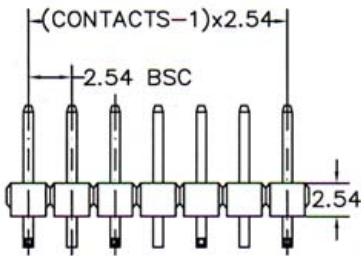
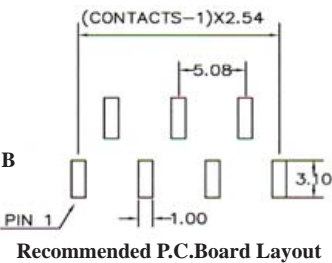
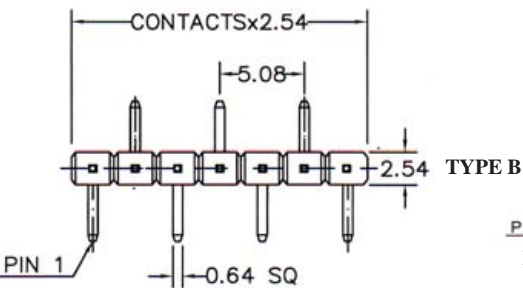
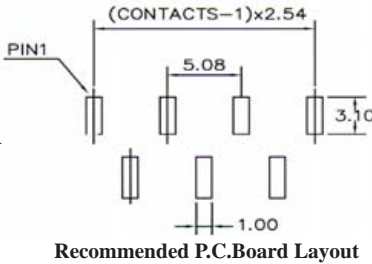
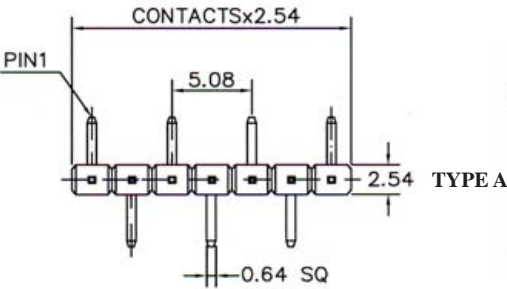


2.54MM(0.100") PIN HEADER SINGLE ROW SMT TYPE PROFILE=2.54MM



SPECIFICATIONS

Current Rating: 3 Amperes
Insulation Resistance: 1000MΩ Min
Dielectric Withstanding: 600V AC/DC
Contact Resistance: 20mΩ Max.
Operating Temperature: -40°C to +105°C

MATERIALS

Contact Material: Copper Alloy
Contact Plating: Gold / Tin over Nickel
Insulator: Glass Filled Polyester (UL 94V-0)
Nylon-6T
All materials must be RoHS compliant.

TYPE A	TYPE B	Dimensions(mm)		
		A	B	C
UA	YA	5.08	3.50	3.8
UB	YB	5.08	4.80	3.8
UC	YC	5.08	6.10	3.8
UD	YD	5.08	6.90	3.8
UE	YE	5.08	9.90	3.8
U5	U7	5.08	5.84	3.8
U6	U8	5.08	8.13	3.8
SY	XP	5.70	5.84	3.8
SZ	XQ	4.83	5.84	3.5

ORDERING INFORMATION:

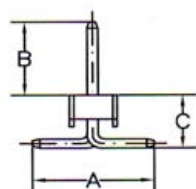
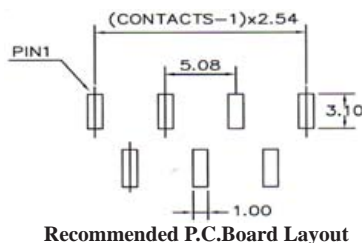
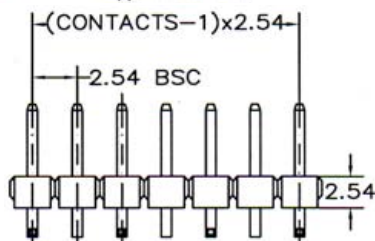
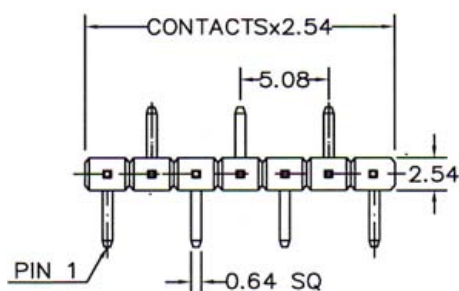
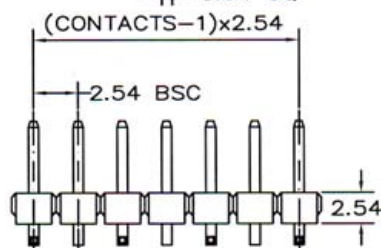
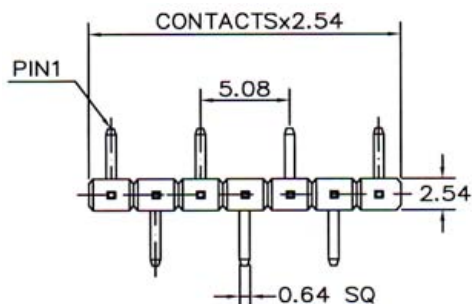
P/N 2 5 4 $\frac{xx}{1}$ - $\frac{xxxx}{2}$ B - $\frac{x}{3}$ $\frac{x}{4}$

1. TERMINAL CODE:
TYPE A: UA, UB, UC, UD, UE, U5, U6, SY, SZ
TYPE B: YA, YB, YC, YD, YE, U7, U8, XP, XQ
2. NO. OF CONTACTS:
002 ~ 040
3. CONTACT FINISH:
"G" FULL GOLD PLATED
"S" SELECTIVE GOLD PLATED
"T" FULL TIN PLATED

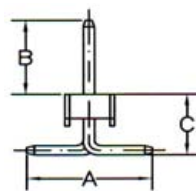
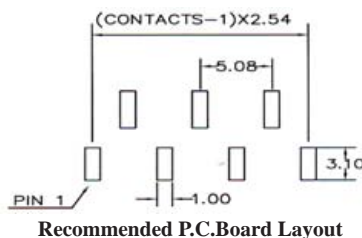
4. PAD & PACKAGE OPTION:
"T" W/O PAD IN TUBE
"P" WITH PAD IN TUBE
"Q" WITH PAD IN TAPE & REEL

NOTE: PAD = PICK & PLACE PAD
NOTE: SEE NEXT PAGES FOR CUSTOMER'S DESIGNS!

2.54MM(0.100") PIN HEADER SINGLE ROW SMT TYPE PROFILE=2.54MM



TYPE A



TYPE B

SPECIFICATIONS

Current Rating: 3 Amperes
Insulation Resistance: 1000MΩ Min
Dielectric Withstanding: 600V AC/DC
Contact Resistance: 20mΩ Max.
Operating Temperature: -40°C to +105°C

MATERIALS

Contact Material: Copper Alloy
Contact Plating: Gold / Tin over Nickel
Insulator: Glass Filled Polyester (UL 94V-0)
 Nylon-6T
 All materials must be RoHS compliant.

ORDERING INFORMATION:

CODE: 2 5 4 $\frac{1}{1}$ M 1 - $\frac{A/B/C}{2}$ - $\frac{x x x x}{3 4}$ B - $\frac{x x}{5 6}$

PLEASE GIVE US A CODE, THEN WE WILL GIVE YOU

P/N P $\frac{x x x x x x x}{Y Y M M D D}$ - $\frac{x x x x}{3 4}$ B

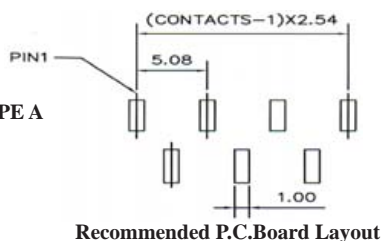
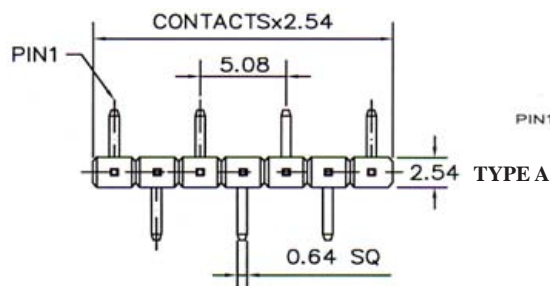
1. EXTERIOR CODE:
1M1
2. DIMENSION A/B/C (UNIT: mm)
3. NO. OF CONTACTS:
002 ~ 040
4. CONTACT FINISH:
"G" FULL GOLD PLATED
"S" SELECTIVE GOLD PLATED
"T" FULL TIN PLATED

5. PCB LAYOUT TYPE:
"A" TYPE A
"B" TYPE B
6. PAD & PACKAGE OPTION:
"T" W/O PAD IN TUBE
"P" WITH PAD IN TUBE
"Q" WITH PAD IN TAPE & REEL

NOTE: PAD = PICK & PLACE PAD

**DIMENSIONI
SPECIALI**

2.54MM(0.100") PIN HEADER SINGLE ROW SMT TYPE PROFILE=2.54MM



SPECIFICATIONS

Current Rating: 3 Amperes

Insulation Resistance: 1000MΩ Min

Dielectric Withstanding: 600V AC/DC

Contact Resistance: 20mΩ Max.

Operating Temperature: -40°C to +105°C

MATERIALS

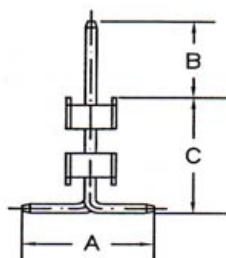
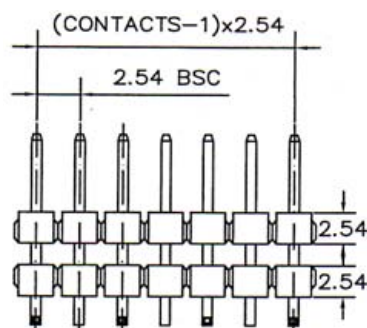
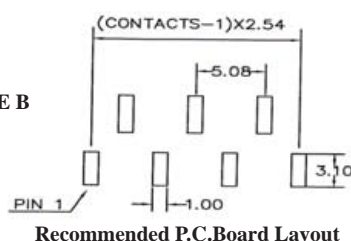
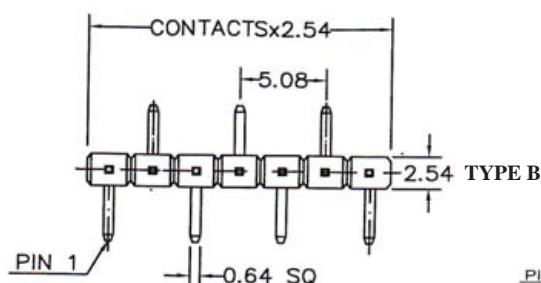
Contact Material: Copper Alloy

Contact Plating: Gold / Tin over Nickel

Insulator: Glass Filled Polyester (UL 94V-0)

Nylon-6T

All materials must be RoHS compliant.



TYPE A	TYPE B	Dimensions(mm)		
		A	B	C
B12	B24	5.8	3.5	7.2
B13	B25	5.8	4.8	7.2
B14	B26	5.8	6.1	6.7
B15	B27	5.8	6.9	8.9
N01	N04	5.08	5.7	6.3
N02	N05	5.08	5.7	7.1
N03	N06	5.08	5.7	10.1

ORDERING INFORMATION:

P/N 2 5 $\frac{B \times \times}{1} - \frac{\times \times \times \times}{2 \ 3} B - \frac{\times}{4}$

1. TERMINAL CODE:

TYPE A: B12, B13, B14, B15, N01, N02, N03

TYPE B: B24, B25, B26, B27, N04, N05, N06

2. NO. OF CONTACTS:

002 ~ 040

3. CONTACT FINISH:

"G" FULL GOLD PLATED

"S" SELECTIVE GOLD PLATED

"T" FULL TIN PLATED

4. PAD & PACKAGE OPTION:

"T" W/O PAD IN TUBE

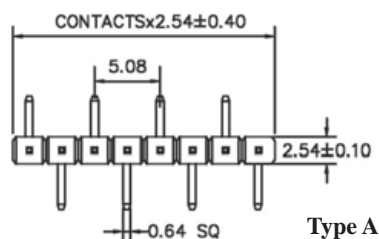
"P" WITH PAD IN TUBE

"Q" WITH PAD IN TAPE & REEL

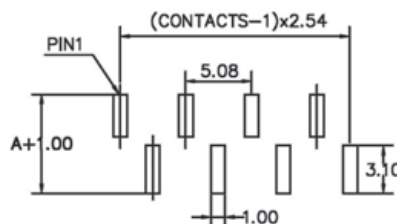
NOTE: PAD = PICK & PLACE PAD

NOTE: SEE NEXT PAGES FOR CUSTOMER'S DESIGNS!

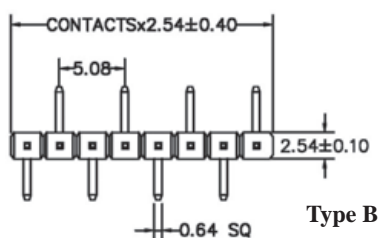
2.54MM (0.100") PIN HEADER SINGLE ROW SMT TYPE PROFILE=2.54MM



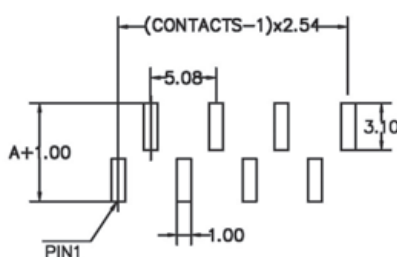
Type A



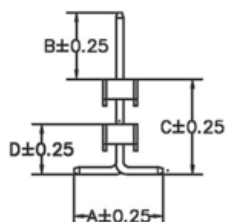
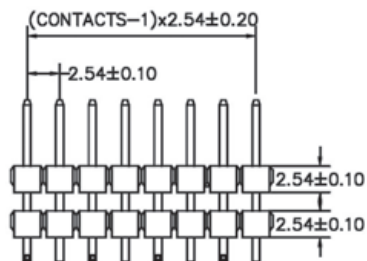
Recommended P.C. Board Layout



Type B



Recommended P.C. Board Layout



ORDERING INFORMATION:

CODE: 2 5 4 1 M 4 - A/B/C/D - x x x x B - x x
1 2 3 4 5 6

PLEASE GIVE US A CODE, THEN WE WILL GIVE YOU

P/N P x x x x x x - x x x x B
YY MM DD 3 4

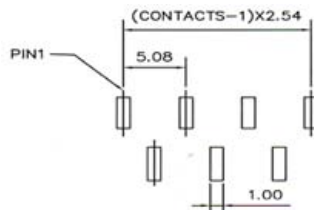
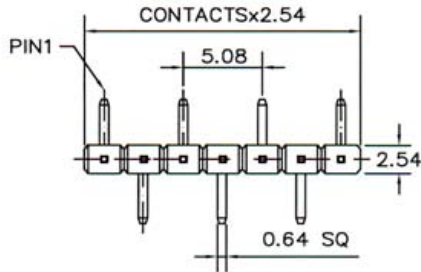
1. EXTERIOR CODE:
1M4
2. DIMENSION A/B/C/D (UNIT: mm)
3. NO. OF CONTACTS:
002 ~ 040
4. CONTACT FINISH:
"G" FULL GOLD PLATED
"S" SELECTIVE GOLD PLATED
"T" FULL TIN PLATED

5. PCB LAYOUT TYPE:
"A" TYPE A
"B" TYPE B
6. PAD & PACKAGE OPTION:
"T" W/O PAD IN TUBE
"P" WITH PAD IN TUBE
"Q" WITH PAD IN TAPE & REEL

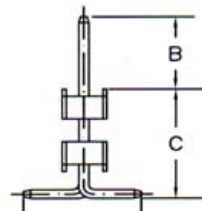
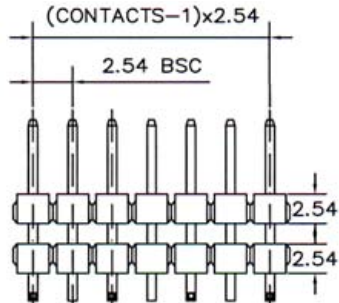
NOTE: PAD = PICK & PLACE PAD

**DIMENSIONI
SPECIALI**

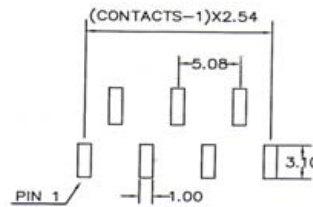
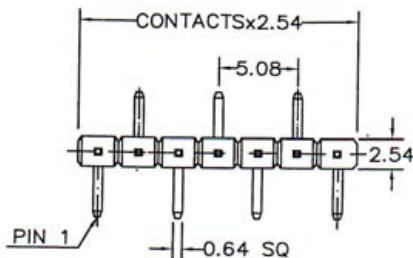
2.54MM(0.100") PIN HEADER SINGLE ROW SMT TYPE PROFILE=2.54MM



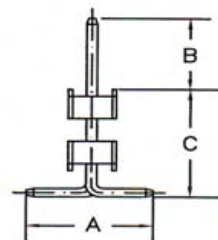
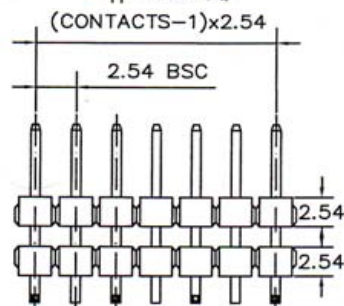
Recommended P.C.Board Layout



TYPE A



Recommended P.C.Board Layout



TYPE B

SPECIFICATIONS

Current Rating: 3 Amperes

Insulation Resistance: 1000MΩ Min

Dielectric Withstanding: 600V AC/DC

Contact Resistance: 20mΩ Max.

Operating Temperature: -40°C to +105°C

MATERIALS

Contact Material: Copper Alloy

Contact Plating: Gold / Tin over Nickel

Insulator: Glass Filled Polyester (UL 94V-0)

Nylon-6T

All materials must be RoHS compliant.

ORDERING INFORMATION:

CODE: 2 5 4 1 M 5 - A/B/C - x x x x B - x x
1 2 3 4 5 6

PLEASE GIVE US A CODE, THEN WE WILL GIVE YOU

P/N P x x x x x x - x x x x B
YY MM DD 3 4

1. EXTERIOR CODE:

1M5

2. DIMENSION A/B/C (UNIT: mm)

3. NO. OF CONTACTS:

002 ~ 040

4. CONTACT FINISH:

"G" FULL GOLD PLATED

"S" SELECTIVE GOLD PLATED

"T" FULL TIN PLATED

5. PCB LAYOUT TYPE:

"A" TYPE A

"B" TYPE B

6. PAD & PACKAGE OPTION:

"T" W/O PAD IN TUBE

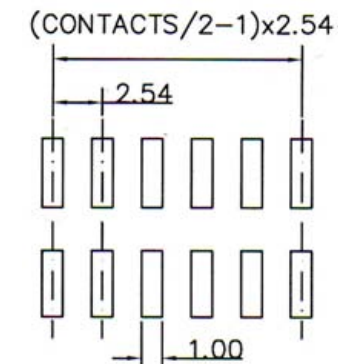
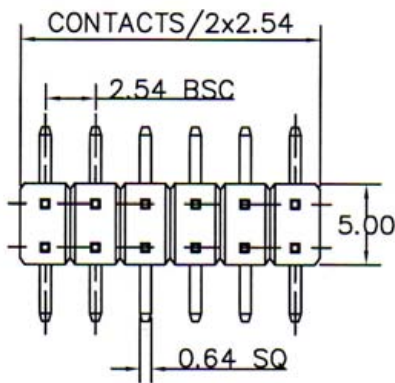
"P" WITH PAD IN TUBE

"Q" WITH PAD IN TAPE & REEL

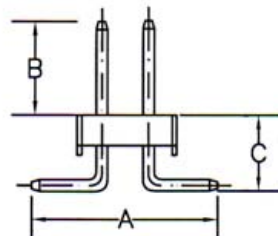
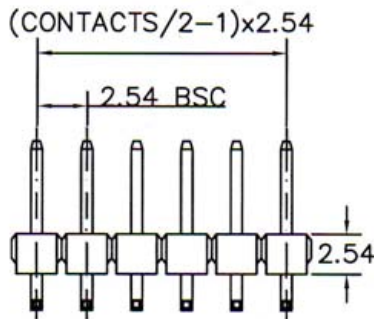
NOTE: PAD = PICK & PLACE PAD

**DIMENSIONI
SPECIALI**

2.54MM(0.100") PIN HEADER DOUBLE ROW SMT TYPE PROFILE=2.54MM



Recommended P.C.Board Layout



SPECIFICATIONS

Current Rating: 3.0 Amp

Dielectric Withstanding: 1000V AC

Insulation Resistance: 1000MΩ Min

Contact Resistance: 20mΩ Max.

Operating Temperature: -55°C to +105°C

MATERIALS

Insulation Material: Nylon 6T, UL 94V-0

Contact Material: Copper Alloy

All materials must be RoHS compliant.

ORDERING INFORMATION:

P/N 2 5 4 $\frac{x}{1}x - \frac{x}{2}x \frac{x}{3}B - \frac{x}{4}$

1. TERMINAL TYPE:

"SU" A/B/C= 7.5/4.0/3.8mm

"SV" A/B/C= 7.5/6.0/3.8mm

"SW" A/B/C= 7.5/8.0/3.8mm

"SX" A/B/C= 7.5/3.0/3.8mm

"MP" A/B/C= 7.2/5.8/3.8mm

2. NO. OF CONTACTS:

004 ~ 080

3. CONTACT FINISH:

"G" FULL GOLD PLATED

"S" SELECTIVE GOLD PLATED

"T" FULL TIN PLATED

4. PAD & PACKAGE OPTION:

"T" W/O PAD IN TUBE

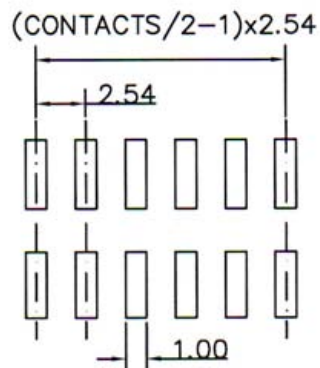
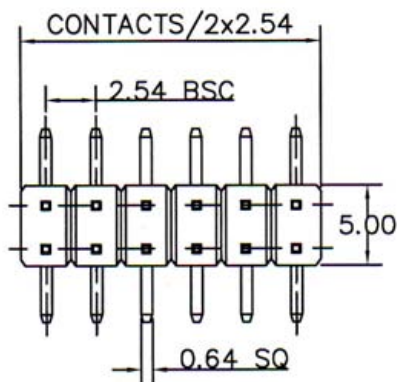
"P" WITH PAD IN TUBE

"Q" WITH PAD IN TPAE & REEL

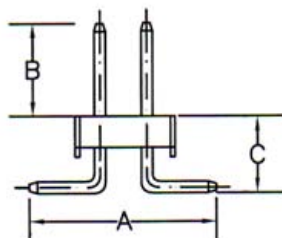
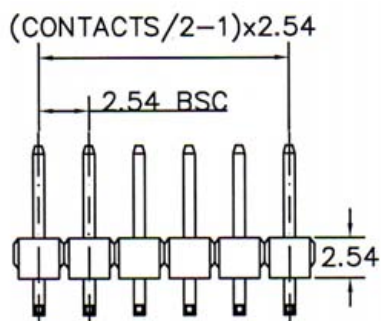
NOTE: PAD = PICK & PLACE PAD

NOTE: SEE NEXT PAGES FOR CUSTOMER'S DESIGNS!

2.54MM(0.100") PIN HEADER DOUBLE ROW SMT TYPE PROFILE=2.54MM



Recommended P.C.Board Layout



SPECIFICATIONS

Current Rating: 3 Amperes
Insulation Resistance: 1000MΩ Min
Dielectric Withstanding: 600V AC/DC
Contact Resistance: 20mΩ Max.
Operating Temperature: -40°C to +105°C

MATERIALS

Contact Material: Copper Alloy
Contact Plating: Gold / Tin over Nickel
Insulator: Glass Filled Polyester (UL 94V-0)
 Nylon-6T
 All materials must be RoHS compliant.

ORDERING INFORMATION:

CODE: 2 6 0 $\frac{2}{1}$ M $\frac{1}{1}$ - $\frac{A}{2}$ / $\frac{B}{2}$ / $\frac{C}{2}$ - $\frac{x}{3}$ $\frac{x}{4}$ $\frac{x}{4}$ B - $\frac{x}{5}$

PLEASE GIVE US A CODE, THEN WE WILL GIVE YOU

P/N P $\frac{x}{3}$ $\frac{x}{4}$ $\frac{x}{4}$ $\frac{x}{4}$ $\frac{x}{4}$ - $\frac{x}{3}$ $\frac{x}{4}$ B
 YY MM DD

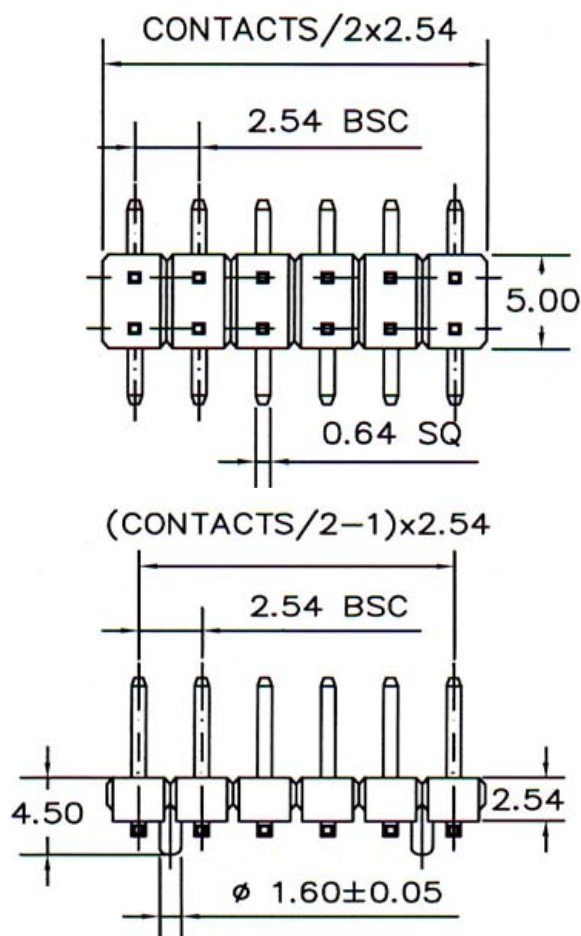
1. EXTERIOR CODE:
2M1
2. DIMENSION A/B/C (UNIT: mm)
3. NO. OF CONTACTS:
004 ~ 080
4. CONTACT FINISH:
"G" FULL GOLD PLATED
"S" SELECTIVE GOLD PLATED
"T" FULL TIN PLATED

5. PAD & PACKAGE OPTION:
"T" W/O PAD IN TUBE
"P" WITH PAD IN TUBE
"Q" WITH PAD IN TPAE & REEL

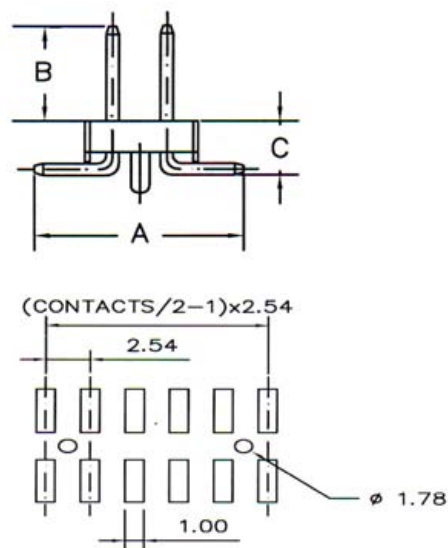
NOTE: PAD = PICK & PLACE PAD

**DIMENSIONI
SPECIALI**

2.54MM(0.100") PIN HEADER DOUBLE ROW SMT TYPE PROFILE=2.54MM



WITHOUT PEG	WITH PEG	Dimensions(mm)		
		A	B	C
UR	K1	7.00	3.50	3.8
US	K2	7.00	4.80	3.8
UT	K3	7.00	6.10	3.8
UU	K4	7.00	6.90	3.8
UV	K5	7.00	9.90	3.8
U1	U3	7.60	5.84	3.8
U2	U4	7.60	8.13	3.8



Recommended P.C.Board Layout

ORDERING INFORMATION:

P/N 2 5 4 $\frac{xx}{1}$ - $\frac{xxxx}{2}$ B - $\frac{x}{4}$

1. TERMINAL CODE:

W/O LOCATING PEG:

UR, US, UT, UU, UV, U1, U2

WITH LOCATING PEG:

K1, K2, K3, K4, K5, U3, U4

2. NO. OF CONTACTS:

004 ~ 080

3. CONTACT FINISH:

"G" FULL GOLD PLATED

"S" SELECTIVE GOLD PLATED

"T" FULL TIN PLATED

4. PAD & PACKAGE OPTION:

"T" W/O PAD IN TUBE

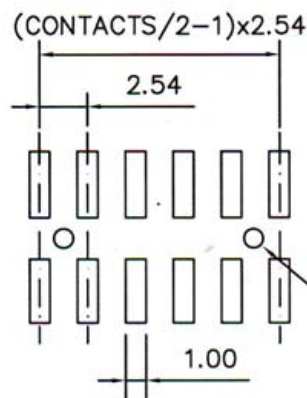
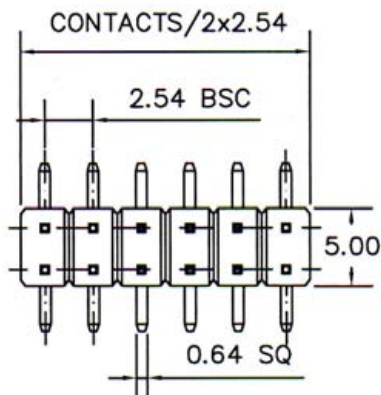
"P" WITH PAD IN TUBE

"Q" WITH PAD IN TAPE & REEL

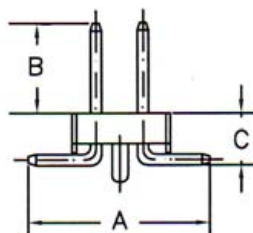
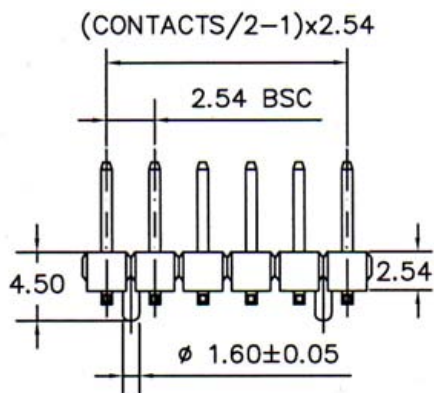
NOTE: PAD = PICK & PLACE PAD

NOTE: SEE NEXT PAGES FOR CUSTOMER'S DESIGNS!

2.54MM(0.100") PIN HEADER DOUBLE ROW SMT TYPE PROFILE=2.54MM



Recommended P.C.Board Layout



SPECIFICATIONS

Current Rating: 3 Amperes
Insulation Resistance: 1000MΩ Min
Dielectric Withstanding: 600V AC/DC
Contact Resistance: 20mΩ Max.
Operating Temperature: -40°C to +105°C

MATERIALS

Contact Material: Copper Alloy
Contact Plating: Gold / Tin over Nickel
Insulator: Glass Filled Polyester (UL 94V-0)
 Nylon-6T
 All materials must be RoHS compliant.

Ø 1.78

ORDERING INFORMATION:

CODE: 2 6 0 2 M 3 - A/B/C - x x x x B - x

PLEASE GIVE US A CODE, THEN WE WILL GIVE YOU

P/N P x x x x x x x - x x x x B

1. EXTERIOR CODE:

2M3

2. DIMENSION A/B/C (UNIT: mm)

3. NO. OF CONTACTS:

004 ~ 080

4. CONTACT FINISH:

"G" FULL GOLD PLATED

"S" SELECTIVE GOLD PLATED

"T" FULL TIN PLATED

5. PAD & PACKAGE OPTION:

"T" W/O PAD IN TUBE

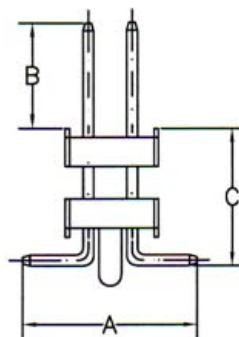
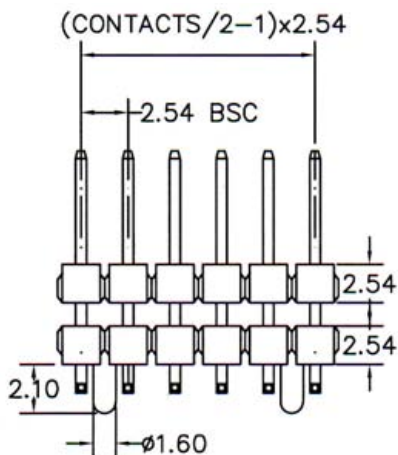
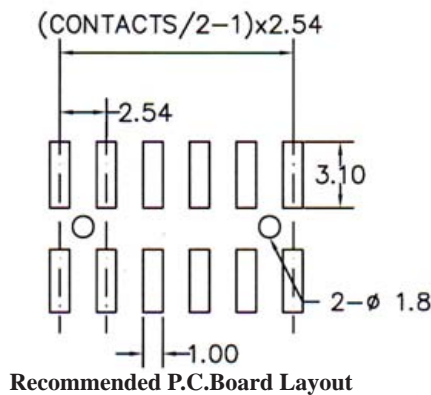
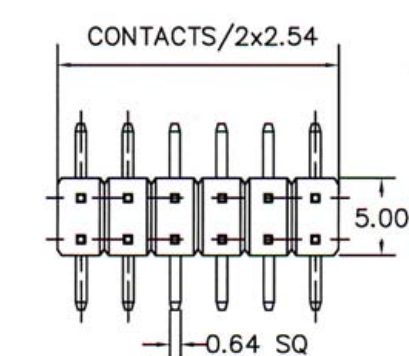
"P" WITH PAD IN TUBE

"Q" WITH PAD IN TAPE & REEL

NOTE: PAD = PICK & PLACE PAD

**DIMENSIONI
SPECIALI**

2.54MM(0.100") PIN HEADER DOUBLE ROW SMT TYPE PROFILE=2.54MM



SPECIFICATIONS

Current Rating: 3.0 Amp

Dielectric Withstanding: 1000V AC

Insulation Resistance: 1000MΩ Min

Contact Resistance: 20mΩ Max.

Operating Temperature: -55°C to +105°C

MATERIALS

Insulation Material: Nylon 6T, UL 94V-0

Contact Material: Copper Alloy

All materials must be RoHS compliant.

WITHOUT PEG	WITH PEG	Dimensions(mm)		
		A	B	C
B36	B45	7.50	3.50	8.77
B37	B46	7.50	4.80	8.27
B38	B47	7.50	6.50	11.07
N07	N10	7.50	5.70	6.30
N08	N11	7.50	5.70	7.10
N09	N12	7.50	5.70	7.10

ORDERING INFORMATION:

P/N 2 5 $\frac{B \times x}{1} - \frac{x \times x \times x}{2 \ 3} B - \frac{x}{4}$

1. TERMINAL CODE:

W/O LOCATING PEG:

B36, B37, B38, N07, N08, N09

WITH LOCATING PEG:

B45, B46, B47, N10, N11, N12

2. NO. OF CONTACTS:

004 ~ 080

3. CONTACT FINISH:

"G" FULL GOLD PLATED

"S" SELECTIVE GOLD PLATED

"T" FULL TIN PLATED

4. PAD & PACKAGE OPTION:

"T" W/O PAD IN TUBE

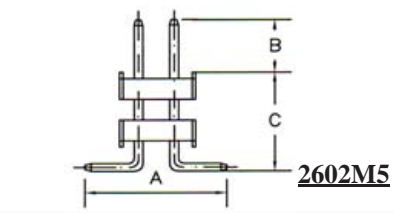
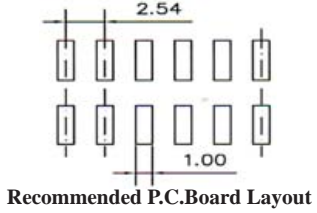
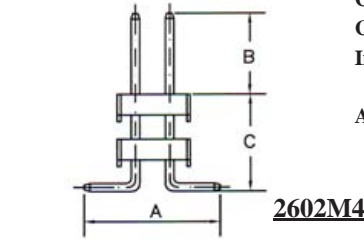
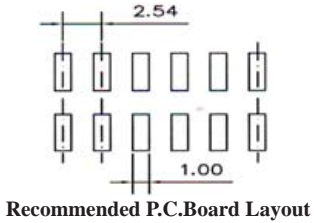
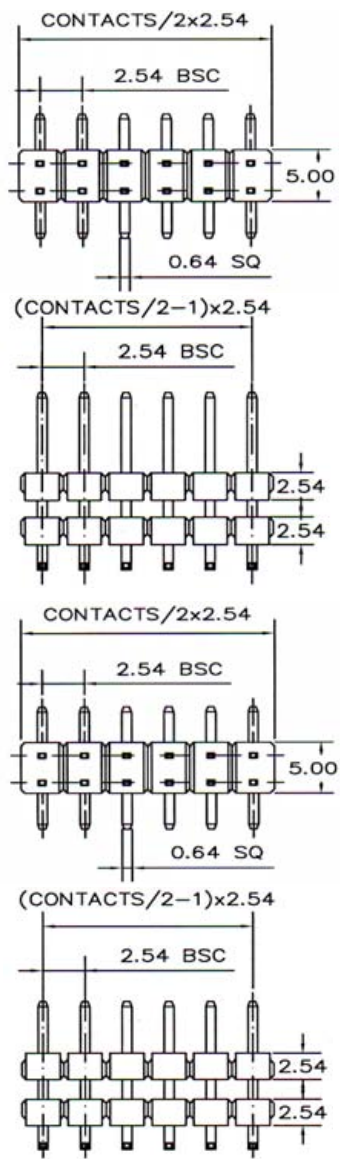
"P" WITH PAD IN TUBE

"Q" WITH PAD IN TAPE & REEL

NOTE: PAD = PICK & PLACE PAD

NOTE: SEE NEXT PAGES FOR CUSTOMER'S
DESIGNS!

2.54MM(0.100") PIN HEADER DOUBLE ROW SMT TYPE PROFILE=2.54MM



SPECIFICATIONS

Current Rating: 3 Amperes
Insulation Resistance: 1000MΩ Min
Dielectric Withstanding: 600V AC/DC
Contact Resistance: 20mΩ Max.
Operating Temperature: -40°c to +105°c

MATERIALS

Contact Material: Copper Alloy
Contact Plating: Gold / Tin over Nickel
Insulator: Glass Filled Polyester (UL 94V-0)
Nylon-6T
All materials must be RoHS compliant.

ORDERING INFORMATION:

CODE: 2 6 0 2 M x - A/B/C - x x x x B - x

PLEASE GIVE US A CODE, THEN WE WILL GIVE YOU

P/N P x x x x x x x - x x x x B
YY MM DD 3 4

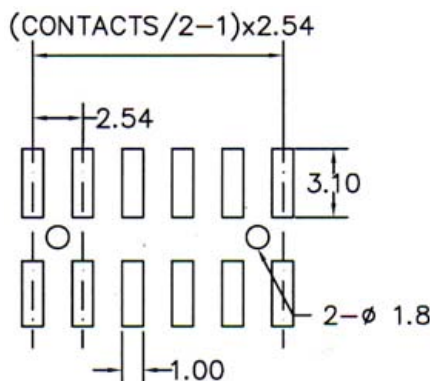
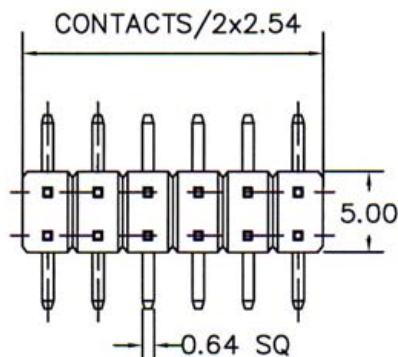
1. EXTERIOR CODE:
"2M4" SEE DRAWING!
"2M5" SEE DRAWING!
2. DIMENSION A/B/C (UNIT: mm)
3. NO. OF CONTACTS:
004 ~ 080
4. CONTACT FINISH:
"G" FULL GOLD PLATED
"S" SELECTIVE GOLD PLATED
"T" FULL TIN PLATED

5. PAD & PACKAGE OPTION:
"T" W/O PAD IN TUBE
"P" WITH PAD IN TUBE
"Q" WITH PAD IN TPAE & REEL

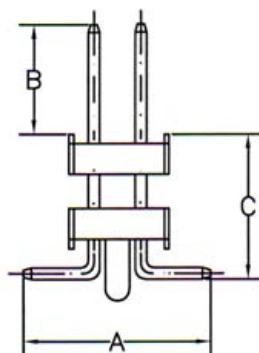
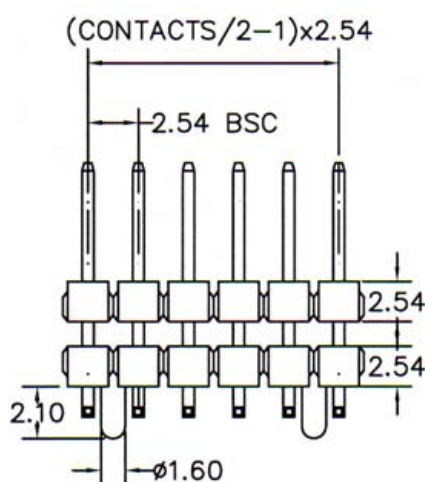
NOTE: PAD = PICK & PLACE PAD

**DIMENSIONI
SPECIALI**

2.54MM(0.100") PIN HEADER DOUBLE ROW SMT TYPE PROFILE=2.54MM



Recommended P.C.Board Layout



SPECIFICATIONS

Current Rating: 3 Amperes

Insulation Resistance: 1000MΩ Min

Dielectric Withstanding: 600V AC/DC

Contact Resistance: 20mΩ Max.

Operating Temperature: -40°C to +105°C

MATERIALS

Contact Material: Copper Alloy

Contact Plating: Gold / Tin over Nickel

Insulator: Glass Filled Polyester (UL 94V-0)

Nylon-6T

All materials must be RoHS compliant.

ORDERING INFORMATION:

CODE: $\frac{2}{1} \frac{6}{2} \frac{0}{M} \frac{7}{7} - \frac{A}{B/C} - \frac{x}{3} \frac{x}{4} \frac{x}{B} - \frac{x}{5}$

PLEASE GIVE US A CODE, THEN WE WILL GIVE YOU

P/N $\frac{P}{YY} \frac{x}{MM} \frac{x}{DD} - \frac{x}{3} \frac{x}{4} \frac{x}{B}$

1. EXTERIOR CODE:

"2M7" WITH LOCATING PEG

2. DIMENSION A/B/C (UNIT: mm)

3. NO. OF CONTACTS:

004 ~ 080

4. CONTACT FINISH:

"G" FULL GOLD PLATED

"S" SELECTIVE GOLD PLATED

"T" FULL TIN PLATED

5. PAD & PACKAGE OPTION:

"T" W/O PAD IN TUBE

"P" WITH PAD IN TUBE

"Q" WITH PAD IN TPAE & REEL

NOTE: PAD = PICK & PLACE PAD

**DIMENSIONI
SPECIALI**