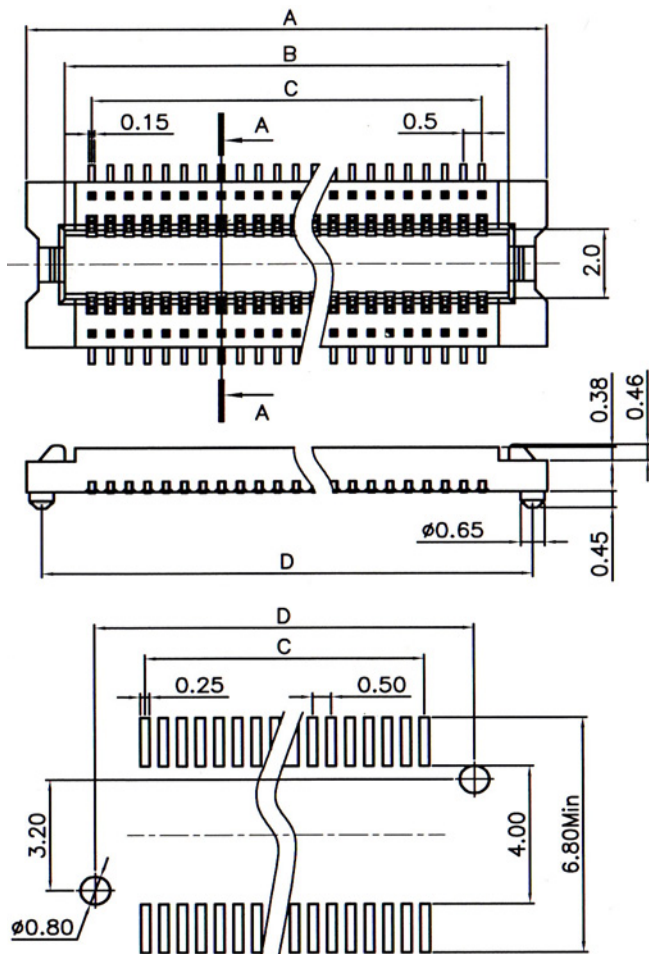


## 0.50MM (0.020") BOARD-TO-BOARD SMT SOCKET (A1)



Recommended P.C.Board Layout

### DIMENSIONS:

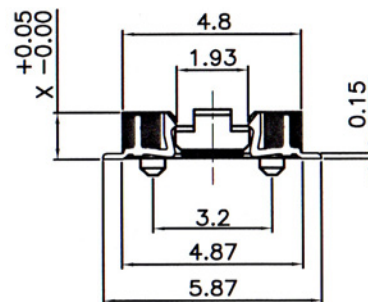
- A = 0.50 x No. of Positions / 2 + 3.00  
 B = 0.50 x No. of Positions / 2 + 0.95  
 C = 0.50 x No. of Positions / 2 - 0.50  
 D = 0.50 x No. of Positions / 2 + 2.20

### SPECIFICATIONS

- Current Rating:** 0.5 Amp  
**Dielectric Withstand Voltage:** AC 150V For 1 minute  
**Insulator Resistance:** 100MΩ min. at DC 500V  
**Contact Resistance:** 90mΩ Max. at DC 100mA  
**Operating Temperature:** -55°C to + 105°C

### MATERIALS

- Housing:** High Temperature Plastic UL94V-0  
**Contacts:** Phosphor Bronze  
 All materials must be RoHS compliant.



STACKED HEIGHT	PART NO.	
	MALE (PLUG)	FEMALE (SOCKET)
1.5 mm	050N1-xxxxB-x	050G1-xxxxB-x
2.0 mm	050N1-xxxxB-x	050G2-xxxxB-x
2.0 mm	050N2-xxxxB-x	050G1-xxxxB-x
2.5 mm	050N2-xxxxB-x	050G2-xxxxB-x

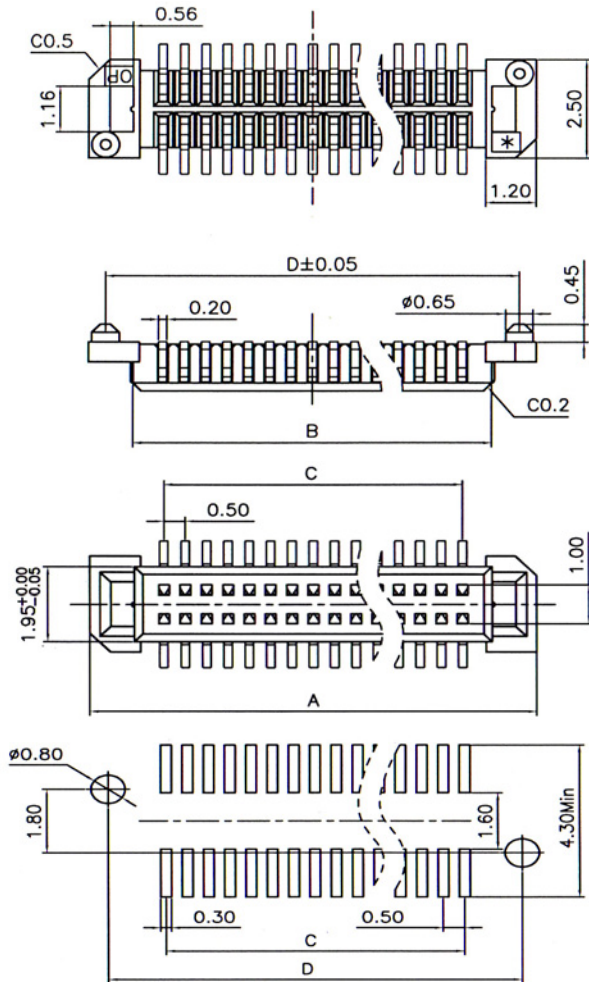
### ORDERING INFORMATION:

**P/N 050  $\frac{xx}{1}$  -  $\frac{xxxx}{2}$   $\frac{x}{3}$  B -  $\frac{x}{4}$**

- PROFILE & POST OPTION:  
 "G1" X = 1.30mm WITH POST  
 "G2" X = 1.85mm WITH POST
- NO. OF CONTACTS:  
 010 ~ 100
- CONTACT FINISH:  
 "G" FULL GOLD PLATED

- PACKAGE OPTION:  
 "T" W/O PAD IN TUBE  
 "R" W/O PAD IN TAPE & REEL

## 0.50MM (0.020") BOARD-TO-BOARD SMT PLUG (A2)



Recommended P.C.Board Layout

STACKED HEIGHT	PART NO.	
	MALE (PLUG)	FEMALE (SOCKET)
1.5 mm	050N1-xxxxB-x	050G1-xxxxB-x
2.0 mm	050N1-xxxxB-x	050G2-xxxxB-x
2.0 mm	050N2-xxxxB-x	050G1-xxxxB-x
2.5 mm	050N2-xxxxB-x	050G2-xxxxB-x

### SPECIFICATIONS

**Current Rating:** 0.5 Amp

**Dielectric Withstand Voltage:** AC 150V For 1 minute

**Insulator Resistance:** 100MΩ min. at DC 500V

**Contact Resistance:** 90mΩ Max. at DC 100mA

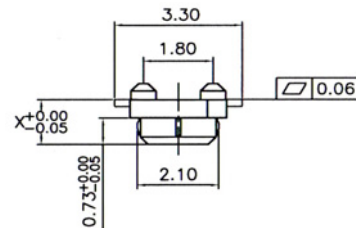
**Operating Temperature:** -55°C to + 105°C

### MATERIALS

**Housing:** High Temperature Plastic UL94V-0

**Contacts:** Phosphor Bronze

**All materials must be RoHS compliant.**



No. of Contacts	Dimensions(mm)			
	A	B	C	D
10	5.50	3.40	2.00	4.70
12	6.00	3.90	2.50	5.20
14	6.50	4.40	3.00	5.70
16	7.00	4.90	3.50	6.20
18	7.50	5.40	4.00	6.70
20	8.00	5.90	4.50	7.20
22	8.50	6.40	5.00	7.70
24	9.00	6.90	5.50	8.20
26	9.50	7.40	6.00	8.70
30	10.50	8.40	7.00	9.70
34	11.50	9.40	8.00	10.70
40	13.00	10.90	9.50	12.20
50	15.50	13.40	12.00	14.70
60	18.00	15.90	14.50	17.20
70	20.50	18.40	17.00	19.70
72	21.00	18.90	17.50	20.20
80	23.00	20.90	19.50	22.20
90	25.50	23.40	22.00	24.70
100	28.00	25.90	24.50	27.20

### ORDERING INFORMATION:

P/N 050  $\frac{x}{1} - \frac{xxx}{2} \frac{x}{3} B - \frac{x}{4}$

1. PROFILE & POST OPTION:

"N1" X = 1.25mm WITH POST

"N2" X = 1.75mm WITH POST

2. NO. OF CONTACTS:

010 ~ 100

3. CONTACT FINISH:

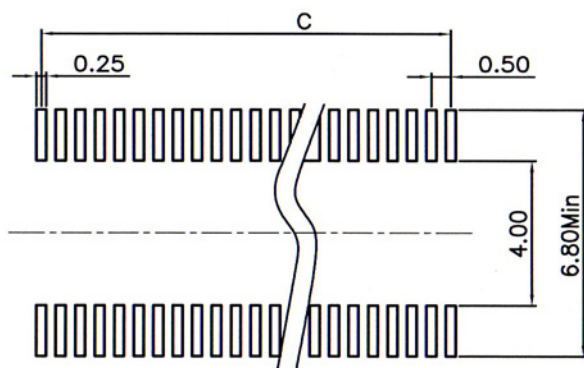
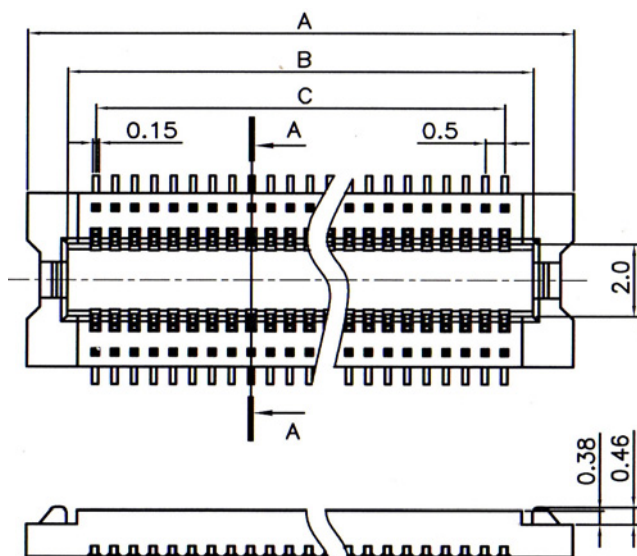
"G" FULL GOLD PLATED

4. PACKAGE OPTION:

"T" W/O PAD IN TUBE

"R" W/O PAD IN TAPE & REEL

## 0.50MM (0.020") BOARD-TO-BOARD SMT SOCKET (B1)



Recommended P.C.Board Layout

### DIMENSIONS:

A = 0.50 x No. of Positions / 2 + 3.00

B = 0.50 x No. of Positions / 2 + 0.95

C = 0.50 x No. of Positions / 2 - 0.50

### SPECIFICATIONS

Current Rating: 0.5 Amp

Dielectric Withstand Voltage: AC 150V For 1 minute

Insulator Resistance: 100MΩ min. at DC 500V

Contact Resistance: 90mΩ Max. at DC 100mA

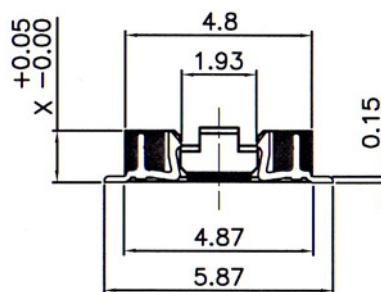
Operating Temperature: -55°C to +105°C

### MATERIALS

Housing: High Temperature Plastic UL94V-0

Contacts: Phosphor Bronze

All materials must be RoHS compliant.



STACKED HEIGHT	PART NO.	
	MALE (PLUG)	FEMALE (SOCKET)
1.5 mm	050N3-xxxxB-x	050G3-xxxxB-x
2.0 mm	050N3-xxxxB-x	050G4-xxxxB-x
2.0 mm	050N4-xxxxB-x	050G3-xxxxB-x
2.5 mm	050N4-xxxxB-x	050G4-xxxxB-x

## ORDERING INFORMATION:

P/N 050  $\frac{1}{1}$  -  $\frac{2}{2}$   $\frac{3}{3}$  B -  $\frac{4}{4}$

### 1. PROFILE & POST OPTION:

"G3" X = 1.30mm WITHOUT POST

"G4" X = 1.85mm WITHOUT POST

### 2. NO. OF CONTACTS:

010 ~ 100

### 3. CONTACT FINISH:

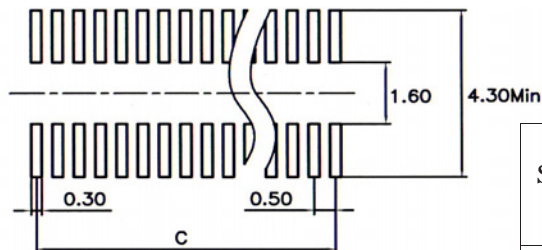
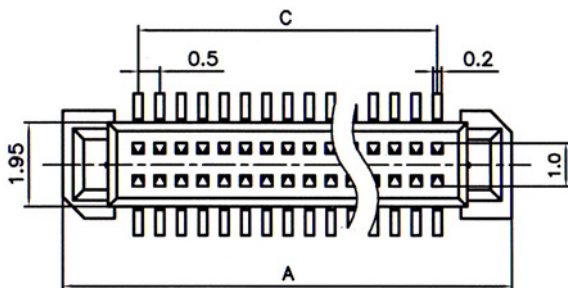
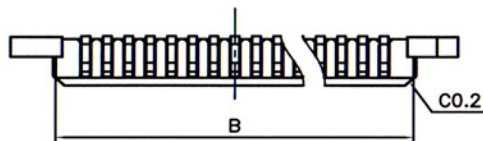
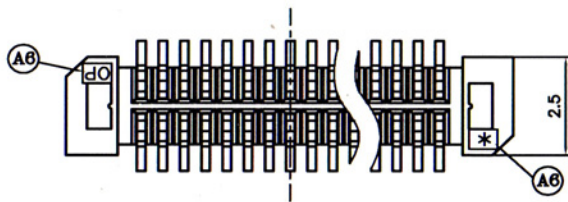
"G" FULL GOLD PLATED

### 4. PACKAGE OPTION:

"T" W/O PAD IN TUBE

"R" W/O PAD IN TAPE & REEL

## 0.50MM (0.020") BOARD-TO-BOARD SMT PLUG (B2)



Recommended P.C.Board Layout

### SPECIFICATIONS

**Current Rating:** 0.5 Amp

**Dielectric Withstand Voltage:** AC 150V For 1 minute

**Insulator Resistance:** 100MΩ min. at DC 500V

**Contact Resistance:** 90mΩ Max. at DC 100mA

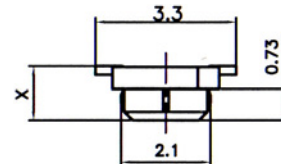
**Operating Temperature:** -55°C to + 105°C

### MATERIALS

**Housing:** High Temperature Plastic UL94V-0

**Contacts:** Phosphor Bronze

All materials must be RoHS compliant.



No. of Contacts	Dimensions(mm)		
	A	B	C
10	5.50	3.40	2.00
12	6.00	3.90	2.50
14	6.50	4.40	3.00
16	7.00	4.90	3.50
20	8.00	5.90	4.50
22	8.50	6.40	5.00
24	9.00	6.90	5.50
26	9.50	7.40	6.00
30	10.50	8.40	7.00
34	11.50	9.40	8.00
40	13.00	10.90	9.50
50	15.50	13.40	12.00
60	18.00	15.90	14.50
70	20.50	18.40	17.00
72	21.00	18.90	17.50
80	23.00	20.90	19.50
90	25.50	23.40	22.00
100	28.00	25.90	24.50

STACKED HEIGHT	PART NO.	
	MALE (PLUG)	FEMALE (SOCKET)
1.5 mm	050N3-xxxxB-x	050G3-xxxxB-x
2.0 mm	050N3-xxxxB-x	050G4-xxxxB-x
2.0 mm	050N4-xxxxB-x	050G3-xxxxB-x
2.5 mm	050N4-xxxxB-x	050G4-xxxxB-x

### ORDERING INFORMATION:

P/N 050  $\frac{xx}{1} - \frac{xxxx}{2} \frac{B}{3} - \frac{x}{4}$

1. PROFILE & POST OPTION:

"N3" X= 1.25mm WITHOUT POST

"N4" X= 1.75mm WITHOUT POST

2. NO. OF CONTACTS:

010 ~ 100

3. CONTACT FINISH:

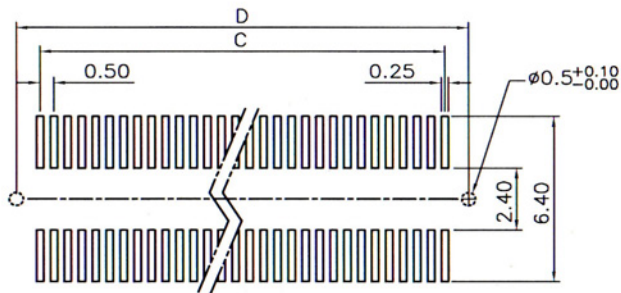
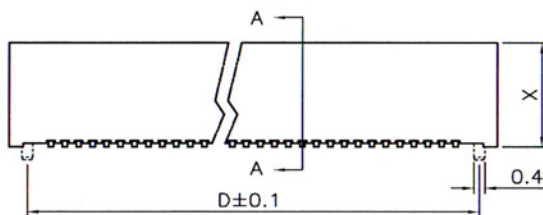
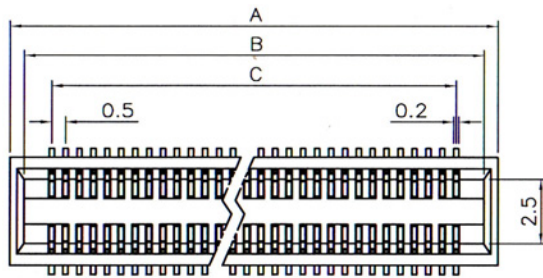
"G" FULL GOLD PLATED

4. PACKAGE OPTION:

"T" W/O PAD IN TUBE

"R" W/O PAD IN TAPE & REEL

## 0.50MM (0.020") BOARD-TO-BOARD SMT SOCKET (C1)



Recommended P.C.Board Layout

### DIMENSIONS:

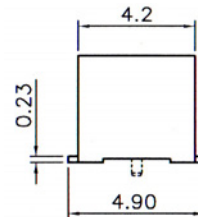
- A = 0.50 x No. of Positions / 2 + 2.50
- B = 0.50 x No. of Positions / 2 + 1.50
- C = 0.50 x No. of Positions / 2 - 0.50
- D = 0.50 x No. of Positions / 2 + 1.20

### SPECIFICATIONS

- Current Rating:** 0.5 Amp
- Dielectric Withstand Voltage:** AC 150V For 1 minute
- Insulator Resistance:** 100MΩ min. at DC 500V
- Contact Resistance:** 90mΩ Max. at DC 100mA
- Operating Temperature:** -55°C to +105°C

### MATERIALS

- Housing:** High Temperature Plastic UL94V-0
- Contacts:** Phosphor Bronze
- All materials must be RoHS compliant.



STACKED HEIGHT	PART NO.	
	MALE (PLUG)	FEMALE (SOCKET)
4.0 mm	050P1(P2)-xxxxB-x	050H1(H5)-xxxxB-x
4.5 mm	050P1(P2)-xxxxB-x	050H2(H6)-xxxxB-x
7.0 mm	050P1(P2)-xxxxB-x	050H3(H7)-xxxxB-x
5.0 mm	050P1(P2)-xxxxB-x	050H4(H8)-xxxxB-x

### ORDERING INFORMATION:

P/N 050  $\frac{xx}{1}$  -  $\frac{xxx}{2}$   $\frac{G}{3}$  B -  $\frac{x}{4}$

#### 1. HEIGHT & POST OPTION:

- "H1" X=3.0mm WITH POST
- "H2" X=3.5mm WITH POST
- "H3" X=6.0mm WITH POST
- "H4" X=4.0mm WITH POST
- "H5" X=3.0mm WITHOUT POST
- "H6" X=3.5mm WITHOUT POST
- "H7" X=6.0mm WITHOUT POST
- "H8" X=4.0mm WITHOUT POST

#### 2. NO. OF CONTACTS:

006 ~ 100

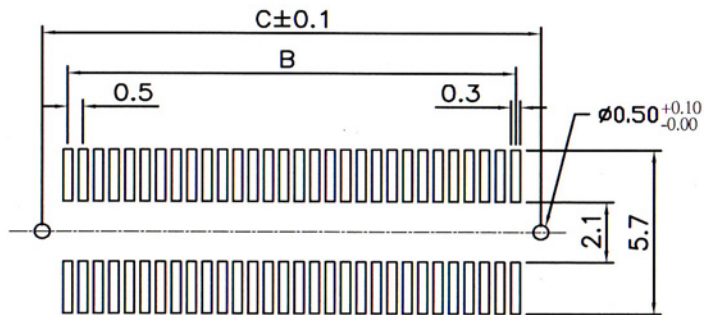
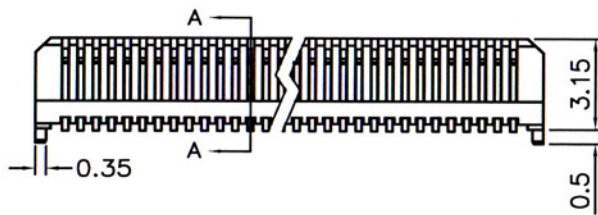
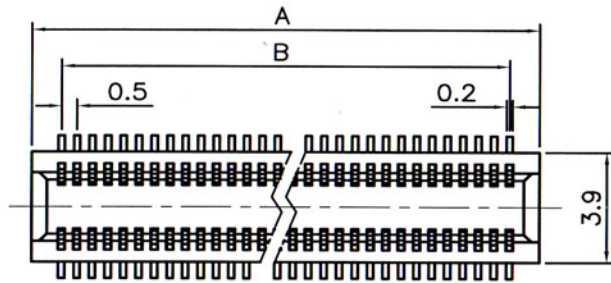
#### 3. CONTACT FINISH:

"G" FULL GOLD PLATED

#### 4. PACKAGE OPTION:

- "T" W/O PAD IN TUBE
- "R" W/O PAD IN TAPE & REEL
- "Q" WITH PAD IN TAPE & REEL

## 0.50MM (0.020") BOARD-TO-BOARD SMT PLUG (C2)



Recommended P.C.Board Layout

### DIMENSIONS:

A = 0.50 x No. of Positions / 2 + 1.50

B = 0.50 x No. of Positions / 2 - 0.50

C = 0.50 x No. of Positions / 2 + 1.20

### SPECIFICATIONS

Current Rating: 0.5 Amp

Dielectric Withstand Voltage: AC 150V For 1 minute

Insulator Resistance: 100M $\Omega$  min. at DC 500V

Contact Resistance: 90m $\Omega$  Max. at DC 100mA

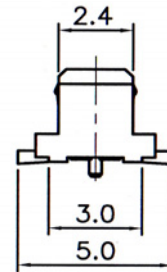
Operating Temperature: -55 $^{\circ}$ c to + 105 $^{\circ}$ c

### MATERIALS

Housing: High Temperature Plastic UL94V-0

Contacts: Phosphor Bronze

All materials must be RoHS compliant.



STACKED HEIGHT	PART NO.	
	MALE (PLUG)	FEMALE (SOCKET)
4.0 mm	050P1(P2)-xxxxB-x	050H1(H5)-xxxxB-x
4.5 mm	050P1(P2)-xxxxB-x	050H2(H6)-xxxxB-x
7.0 mm	050P1(P2)-xxxxB-x	050H3(H7)-xxxxB-x
5.0 mm	050P1(P2)-xxxxB-x	050H4(H8)-xxxxB-x

### ORDERING INFORMATION:

P/N 050  $\frac{xx}{1}$  -  $\frac{xxx}{2}$   $\frac{G}{3}$  B -  $\frac{x}{4}$

#### 1. POST OPTION:

"P1" WITH POST

#### 2. NO. OF CONTACTS:

006 ~ 100

#### 3. CONTACT FINISH:

"G" FULL GOLD PLATED

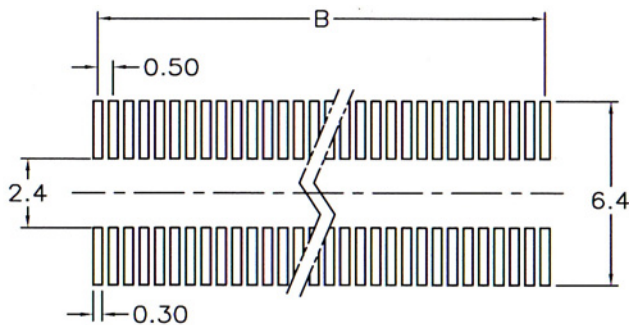
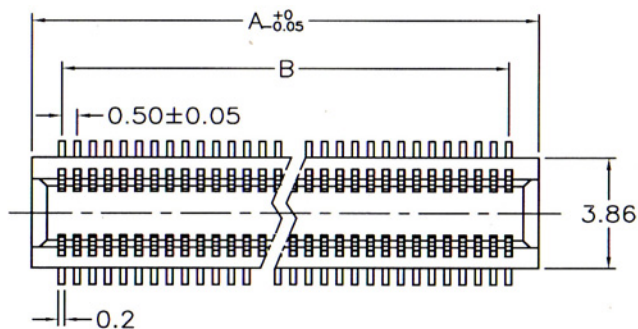
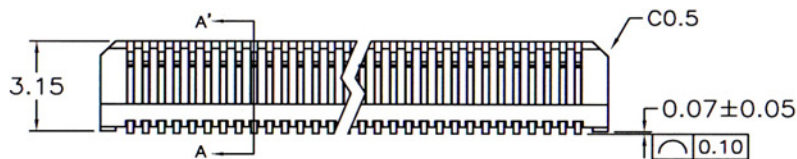
#### 4. PACKAGE OPTION:

"T" W/O PAD IN TUBE

"R" W/O PAD IN TAPE & REEL

"Q" WITH PAD IN TAPE & REEL

## 0.50MM (0.020") BOARD-TO-BOARD SMT PLUG (C3)



Recommended P.C.Board Layout

### DIMENSIONS:

A = 0.50 x No. of Positions / 2 + 1.50

B = 0.50 x No. of Positions / 2 - 0.50

C = 0.50 x No. of Positions / 2 + 1.20

### SPECIFICATIONS

**Current Rating:** 0.5 Amp

**Dielectric Withstand Voltage:** AC 150V For 1 minute

**Insulator Resistance:** 100MΩ min. at DC 500V

**Contact Resistance:** 90mΩ Max. at DC 100mA

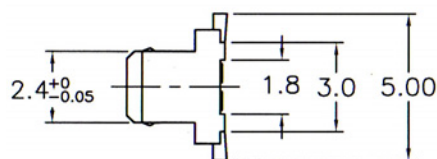
**Operating Temperature:** -55°C to +105°C

### MATERIALS

**Housing:** High Temperature Plastic UL94V-0

**Contacts:** Phosphor Bronze

All materials must be RoHS compliant.



STACKED HEIGHT	PART NO.	
	MALE (PLUG)	FEMALE (SOCKET)
4.0 mm	050P1(P2)-xxxxB-x	050H1(H5)-xxxxB-x
4.5 mm	050P1(P2)-xxxxB-x	050H2(H6)-xxxxB-x
7.0 mm	050P1(P2)-xxxxB-x	050H3(H7)-xxxxB-x
5.0 mm	050P1(P2)-xxxxB-x	050H4(H8)-xxxxB-x

### ORDERING INFORMATION:

P/N 050  $\frac{xx}{1}$  -  $\frac{xxx}{2}$   $\frac{G}{3}$  B -  $\frac{x}{4}$

#### 1. POST OPTION:

"P2" WITHOUT POST

#### 2. NO. OF CONTACTS:

006 ~ 100

#### 3. CONTACT FINISH:

"G" FULL GOLD PLATED

#### 4. PACKAGE OPTION:

"T" W/O PAD IN TUBE

"R" W/O PAD IN TAPE & REEL

"Q" WITH PAD IN TAPE & REEL

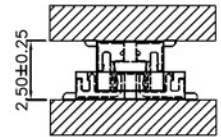
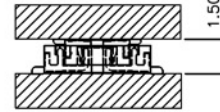
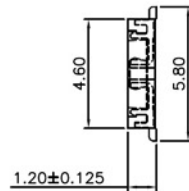
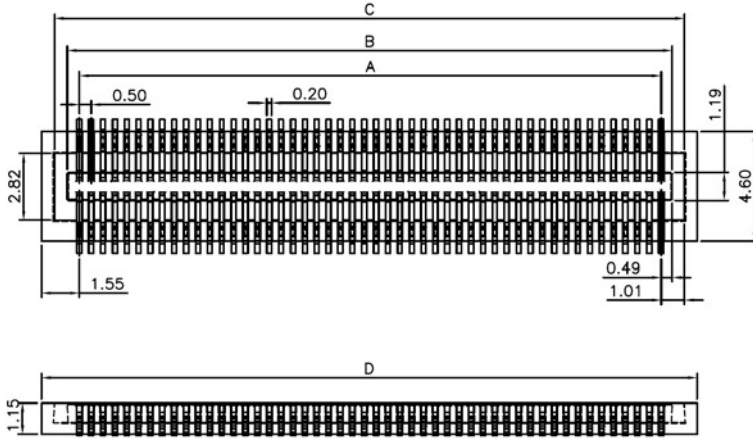
# 0.50MM(0.0197") BOARD-TO-BOARD SMT SOCKET (D1)

## SPECIFICATIONS

**Rating Current:** 0.5 Amperes  
**Insulation Resistance:** 100MΩ Min.  
**Withstanding Voltage:** 500V AC  
**Contact Resistance:** 40mΩ Max.  
**Operating Temperature:** -20°C to +105°C

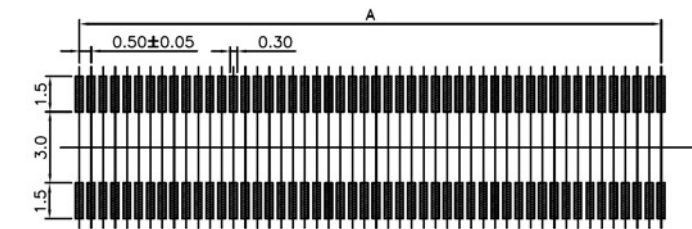
## MATERIALS

**Contact:** Phosphor Bronze  
**Contact Plating:** Gold  
**Insulator:** HTN (UL 94V-0)  
 \* RoHS & REACH compliant.



Mating Drawing 1

Mating Drawing 2



Recommended P.C. Board Layout

Contacts Dimensions				
No. of Position	A	B	C	D
020	4.50	5.48	6.52	7.60
030	7.00	7.98	9.02	10.10
040	9.50	10.48	11.52	12.60
050	12.00	12.98	14.02	15.10
060	14.50	15.48	16.52	17.60
070	17.00	17.98	19.02	20.10
080	19.50	20.48	21.52	22.60
090	22.00	22.98	24.02	25.10
100	24.50	25.48	26.52	27.60

STACKED HEIGHT	PART NO. (MALE)	PART NO. (FEMALE)
1.50MM	050M1-xxxGB-x	050F1-xxxGB-x
2.50MM	050M2-xxxGB-x	050F1-xxxGB-x

## ORDERING INFORMATION:

P/N 050  $\frac{F1}{1}$  -  $\frac{xxx}{2}$  GB -  $\frac{x}{3}$

- BODY HEIGHT:  
"F1" H= 1.20MM
- NO. OF CONTACTS:  
020, 030, 040, 050, 060, 070, 080, 090, 100
- PACKAGE OPTION:  
"T" W/O PAD IN TUBE  
"R" W/O PAD IN TAPE & REEL



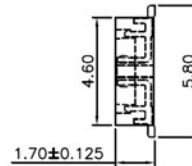
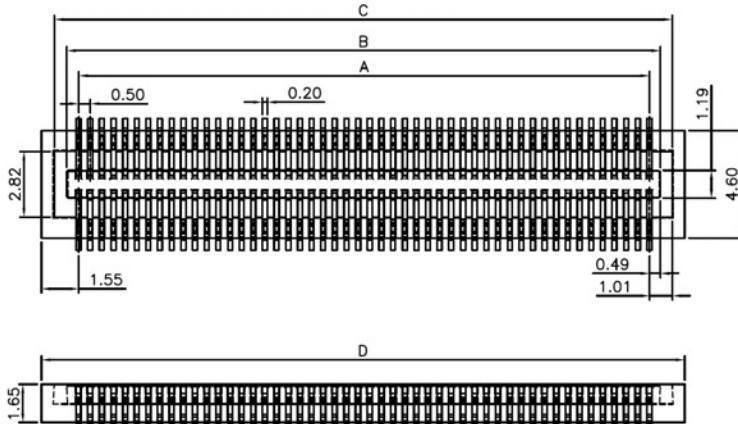
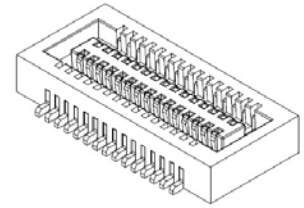
# 0.50MM(0.0197") BOARD-TO-BOARD SMT SOCKET (D2)

## SPECIFICATIONS

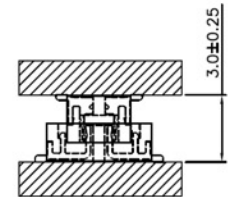
**Rating Current:** 0.5 Amperes  
**Insulation Resistance:** 100MΩ Min.  
**Withstanding Voltage:** 500V AC  
**Contact Resistance:** 40mΩ Max.  
**Operating Temperature:** -20°C to +105°C

## MATERIALS

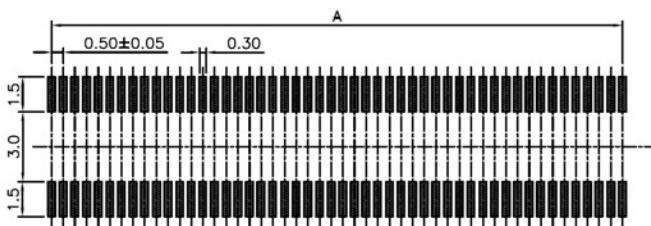
**Contact:** Phosphor Bronze  
**Contact Plating:** Gold  
**Insulator:** HTN (UL 94V-0)  
 \* RoHS & REACH compliant.



Mating Drawing 1



Mating Drawing 2



Recommended P.C.Board Layout

Contacts Dimensions				
No. of Position	A	B	C	D
020	4.50	5.48	6.52	7.60
030	7.00	7.98	9.02	10.10
040	9.50	10.48	11.52	12.60
050	12.00	12.98	14.02	15.10
060	14.50	15.48	16.52	17.60
070	17.00	17.98	19.02	20.10
080	19.50	20.48	21.52	22.60
090	22.00	22.98	24.02	25.10
100	24.50	25.48	26.52	27.60

STACKED HEIGHT	PART NO. (MALE)	PART NO. (FEMALE)
2.00MM	050M1-xxxGB-x	050F2-xxxGB-x
3.00MM	050M2-xxxGB-x	050F2-xxxGB-x

## ORDERING INFORMATION:

P/N 050  $\frac{F2}{1}$  -  $\frac{xxx}{2}$  GB -  $\frac{x}{3}$

- BODY HEIGHT:  
"F2" H= 1.70MM
- NO. OF CONTACTS:  
020, 030, 040, 050, 060, 070, 080, 090, 100
- PACKAGE OPTION:  
"T" W/O PAD IN TUBE  
"R" W/O PAD IN TAPE & REEL

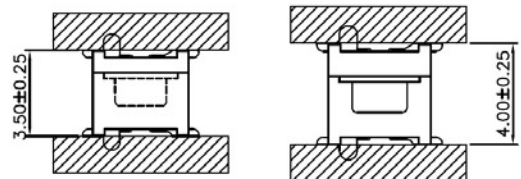
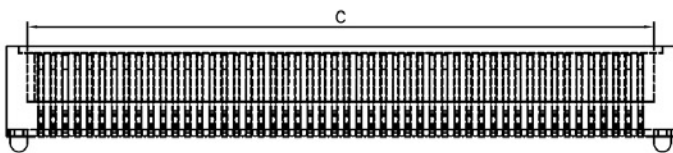
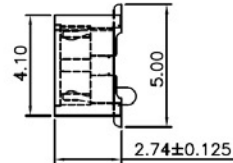
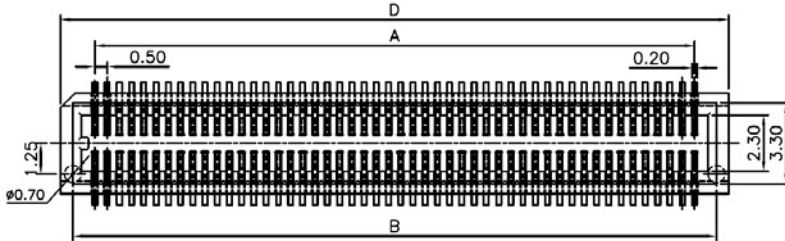
# 0.50MM(0.0197") BOARD-TO-BOARD SMT SOCKET (D3)

## SPECIFICATIONS

**Rating Current:** 0.5 Amperes  
**Insulation Resistance:** 100MΩ Min.  
**Withstanding Voltage:** 500V AC  
**Contact Resistance:** 40mΩ Max.  
**Operating Temperature:** -20°C to +105°C

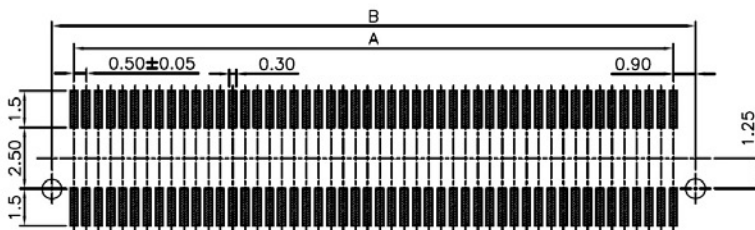
## MATERIALS

**Contact:** Phosphor Bronze  
**Contact Plating:** Gold  
**Insulator:** HTN (UL 94V-0)  
 \* RoHS & REACH compliant.



Mating Drawing 1

Mating Drawing 2



Recommended P.C.Board Layout

Contacts Dimensions				
No. of Position	A	B	C	D
020	4.50	6.30	5.60	7.30
030	7.00	8.80	8.10	9.80
040	9.50	11.30	10.60	12.30
050	12.00	13.80	13.10	14.80
060	14.50	16.30	15.60	17.30
070	17.00	18.80	18.10	19.80
080	19.50	21.30	20.60	22.30
090	22.00	23.80	23.10	24.80
100	24.50	26.30	25.60	27.30

STACKED HEIGHT	PART NO. (MALE)	PART NO. (FEMALE)
3.50MM	050M3-xxxGB-x	050F3-xxxGB-x
4.00MM	050M4-xxxGB-x	050F3-xxxGB-x

## ORDERING INFORMATION:

P/N 050  $\frac{F3}{1}$  -  $\frac{xxx}{2}$  GB -  $\frac{x}{3}$

- BODY HEIGHT:  
"F3" H= 2.74MM
- NO. OF CONTACTS:  
020, 030, 040, 050, 060, 070, 080, 090, 100
- PACKAGE OPTION:  
"T" W/O PAD IN TUBE  
"R" W/O PAD IN TAPE & REEL

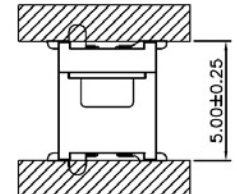
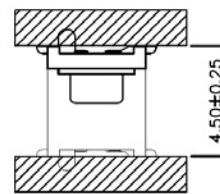
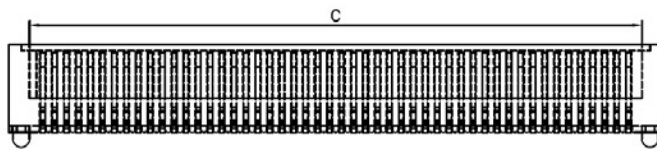
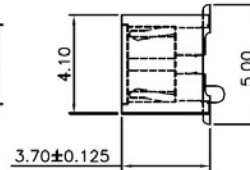
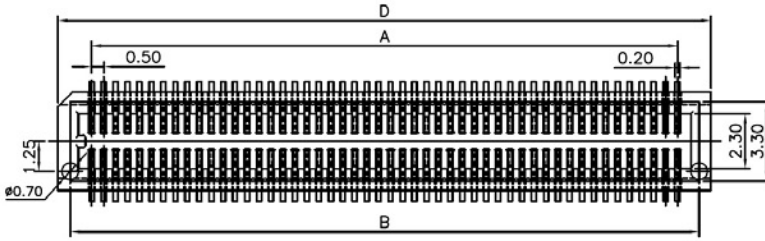
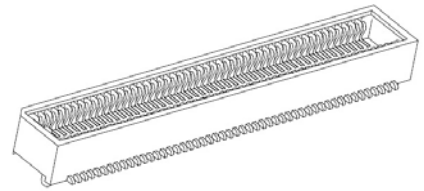
# 0.50MM(0.0197") BOARD-TO-BOARD SMT SOCKET (D4)

## SPECIFICATIONS

**Rating Current:** 0.5 Amperes  
**Insulation Resistance:** 100MΩ Min.  
**Withstanding Voltage:** 500V AC  
**Contact Resistance:** 40mΩ Max.  
**Operating Temperature:** -20°C to +105°C

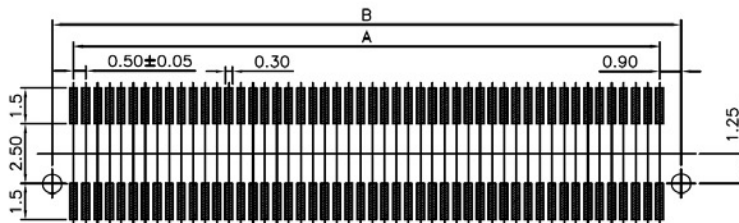
## MATERIALS

**Contact:** Phosphor Bronze  
**Contact Plating:** Gold  
**Insulator:** HTN (UL 94V-0)  
 \* RoHS & REACH compliant.



Mating Drawing 1

Mating Drawing 2



Recommended P.C.Board Layout

Contacts Dimensions				
No. of Position	A	B	C	D
020	4.50	6.30	5.60	7.30
030	7.00	8.80	8.10	9.80
040	9.50	11.30	10.60	12.30
050	12.00	13.80	13.10	14.80
060	14.50	16.30	15.60	17.30
070	17.00	18.80	18.10	19.80
080	19.50	21.30	20.60	22.30
090	22.00	23.80	23.10	24.80
100	24.50	26.30	25.60	27.30

STACKED HEIGHT	PART NO. (MALE)	PART NO. (FEMALE)
4.50MM	050M3-xxxGB-x	050F4-xxxGB-x
5.00MM	050M4-xxxGB-x	050F4-xxxGB-x

## ORDERING INFORMATION:

P/N 050  $\frac{F4}{1}$  -  $\frac{xxx}{2}$  GB -  $\frac{x}{3}$

- BODY HEIGHT:  
"F4" H= 3.70MM
- NO. OF CONTACTS:  
020, 030, 040, 050, 060, 070, 080, 090, 100
- PACKAGE OPTION:  
"T" W/O PAD IN TUBE  
"R" W/O PAD IN TAPE & REEL

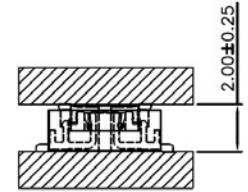
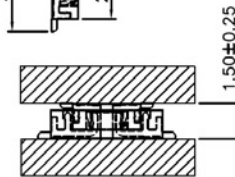
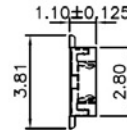
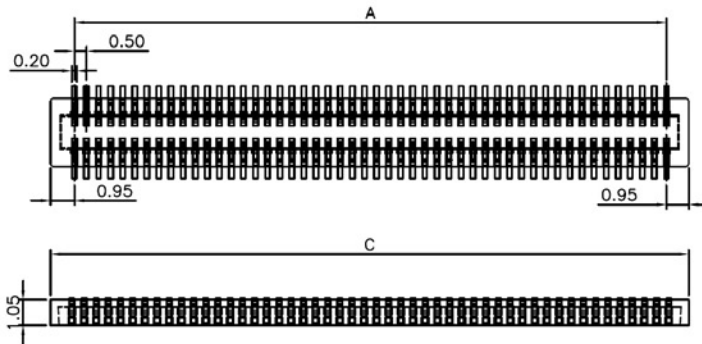
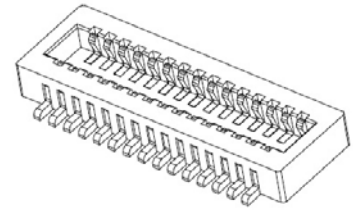
## 0.50MM(0.0197") BOARD-TO-BOARD SMT PLUG (D5)

### SPECIFICATIONS

**Rating Current:** 0.5 Amperes  
**Insulation Resistance:** 100MΩ Min.  
**Withstanding Voltage:** 500V AC  
**Contact Resistance:** 40mΩ Max.  
**Operating Temperature:** -20°C to +105°C

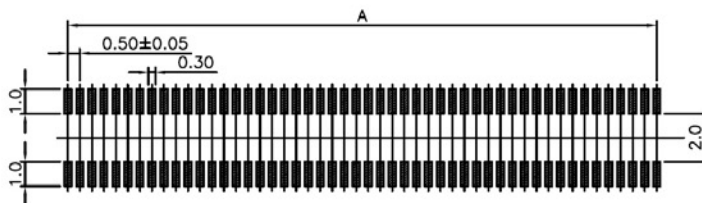
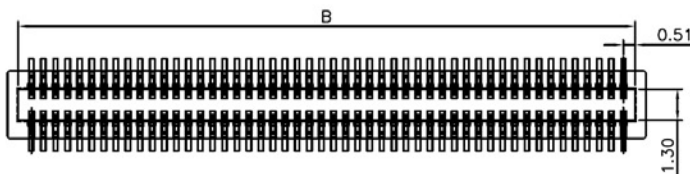
### MATERIALS

**Contact:** Phosphor Bronze  
**Contact Plating:** Gold  
**Insulator:** HTN (UL 94V-0)  
 \* RoHS & REACH compliant.



Mating Drawing 1

Mating Drawing 2



Recommended P.C.Board Layout

Contacts Dimensions			
No. of Position	A	B	C
020	4.50	5.52	6.40
030	7.00	8.02	8.90
040	9.50	10.52	11.40
050	12.00	13.02	13.90
060	14.50	15.52	16.40
070	17.00	18.02	18.90
080	19.50	20.52	21.40
090	22.00	23.02	23.90
100	24.50	25.52	26.40

STACKED HEIGHT	PART NO. (MALE)	PART NO. (FEMALE)
1.50MM	050M1-xxxGB-x	050F1-xxxGB-x
2.00MM	050M1-xxxGB-x	050F2-xxxGB-x

### ORDERING INFORMATION:

P/N 050  $\frac{M1}{1}$  -  $\frac{xxx}{2}$  GB -  $\frac{x}{3}$

- BODY HEIGHT:  
"M1" H= 1.10MM
- NO. OF CONTACTS:  
020, 030, 040, 050, 060, 070, 080, 090, 100
- PACKAGE OPTION:  
"T" W/O PAD IN TUBE  
"R" W/O PAD IN TAPE & REEL

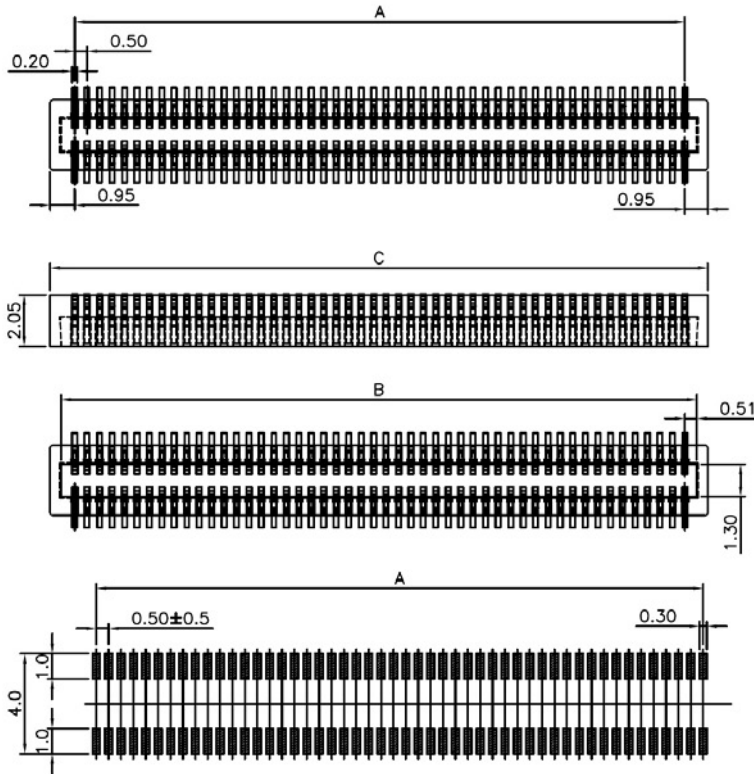
# 0.50MM(0.0197") BOARD-TO-BOARD SMT PLUG (D6)

## SPECIFICATIONS

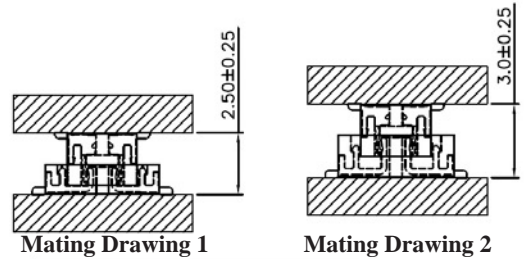
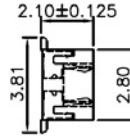
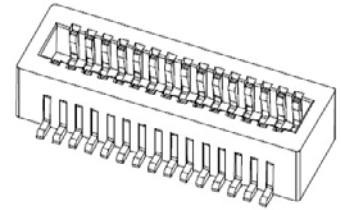
**Rating Current:** 0.5 Amperes  
**Insulation Resistance:** 100MΩ Min.  
**Withstanding Voltage:** 500V AC  
**Contact Resistance:** 40mΩ Max.  
**Operating Temperature:** -20°C to +105°C

## MATERIALS

**Contact:** Phosphor Bronze  
**Contact Plating:** Gold  
**Insulator:** HTN (UL 94V-0)  
 \* RoHS & REACH compliant.



Recommended P.C. Board Layout



Contacts Dimensions			
No. of Position	A	B	C
020	4.50	5.52	6.40
030	7.00	8.02	8.90
040	9.50	10.52	11.40
050	12.00	13.02	13.90
060	14.50	15.52	16.40
070	17.00	18.02	18.90
080	19.50	20.52	21.40
090	22.00	23.02	23.90
100	24.50	25.52	26.40

STACKED HEIGHT	PART NO. (MALE)	PART NO. (FEMALE)
2.50MM	050M2-xxxGB-x	050F1-xxxGB-x
3.00MM	050M2-xxxGB-x	050F2-xxxGB-x

## ORDERING INFORMATION:

P/N 050 M2 - xxx GB - x

1                      2                      3

- BODY HEIGHT:  
"M2" H= 2.10MM
- NO. OF CONTACTS:  
020, 030, 040, 050, 060, 070, 080, 090, 100
- PACKAGE OPTION:  
"T" W/O PAD IN TUBE  
"R" W/O PAD IN TAPE & REEL

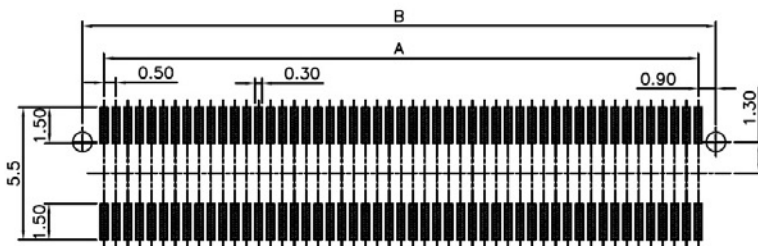
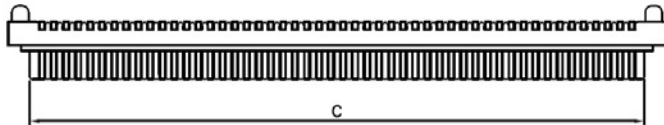
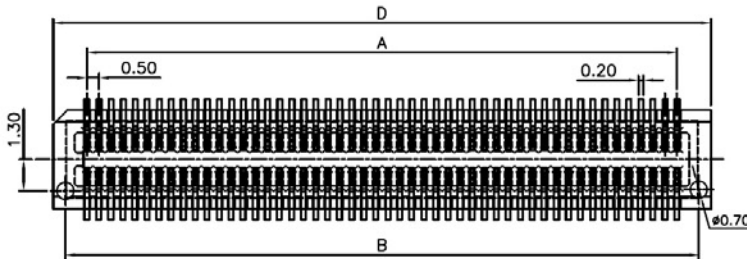
# 0.50MM(0.0197") BOARD-TO-BOARD SMT PLUG (D7)

## SPECIFICATIONS

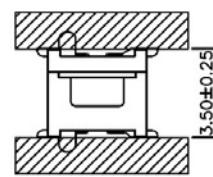
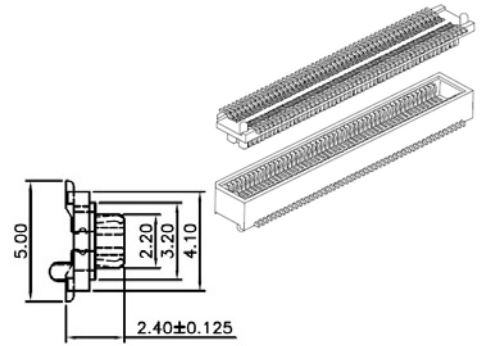
**Rating Current:** 0.5 Amperes  
**Insulation Resistance:** 100MΩ Min.  
**Withstanding Voltage:** 500V AC  
**Contact Resistance:** 40mΩ Max.  
**Operating Temperature:** -20°C to +105°C

## MATERIALS

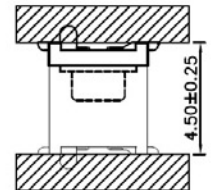
**Contact:** Phosphor Bronze  
**Contact Plating:** Gold  
**Insulator:** HTN (UL 94V-0)  
 \* RoHS & REACH compliant.



Recommended P.C.Board Layout



Mating Drawing 1



Mating Drawing 2

Contacts Dimensions				
No. of Position	A	B	C	D
020	4.50	6.30	5.50	7.30
030	7.00	8.80	8.00	9.80
040	9.50	11.30	10.50	12.30
050	12.00	13.80	13.00	14.80
060	14.50	16.30	15.50	17.30
070	17.00	18.80	18.00	19.80
080	19.50	21.30	20.50	22.30
090	22.00	23.80	23.00	24.80
100	24.50	26.30	25.50	27.30

STACKED HEIGHT	PART NO. (MALE)	PART NO. (FEMALE)
3.50MM	050M3-xxxGB-x	050F3-xxxGB-x
4.50MM	050M3-xxxGB-x	050F4-xxxGB-x

## ORDERING INFORMATION:

P/N 050 M3 - xxx GB - x

1                      2                      3

1. BODY HEIGHT:  
"M3" H= 2.40MM
2. NO. OF CONTACTS:  
020, 030, 040, 050, 060, 070, 080, 090, 100
3. PACKAGE OPTION:  
"T" W/O PAD IN TUBE  
"R" W/O PAD IN TAPE & REEL

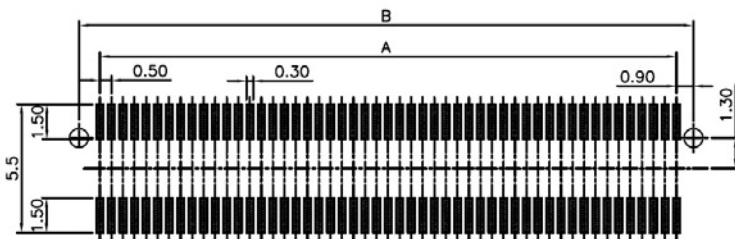
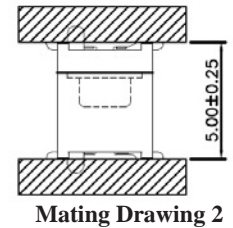
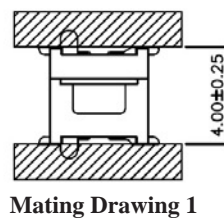
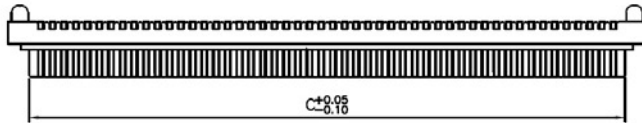
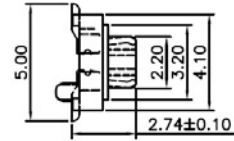
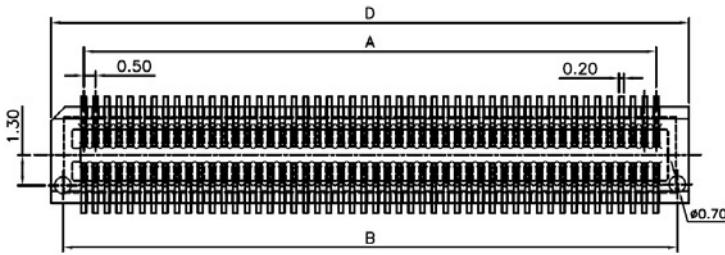
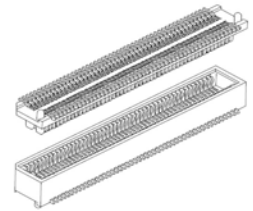
# 0.50MM(0.0197") BOARD-TO-BOARD SMT PLUG (D8)

## SPECIFICATIONS

**Rating Current:** 0.5 Amperes  
**Insulation Resistance:** 100MΩ Min.  
**Withstanding Voltage:** 500V AC  
**Contact Resistance:** 40mΩ Max.  
**Operating Temperature:** -20°C to +105°C

## MATERIALS

**Contact:** Phosphor Bronze  
**Contact Plating:** Gold  
**Insulator:** HTN (UL 94V-0)  
 \* RoHS & REACH compliant.



Recommended P.C.Board Layout

Contacts Dimensions				
No. of Position	A	B	C	D
020	4.50	6.30	5.50	7.30
030	7.00	8.80	8.00	9.80
040	9.50	11.30	10.50	12.30
050	12.00	13.80	13.00	14.80
060	14.50	16.30	15.50	17.30
070	17.00	18.80	18.00	19.80
080	19.50	21.30	20.50	22.30
090	22.00	23.80	23.00	24.80
100	24.50	26.30	25.50	27.30

STACKED HEIGHT	PART NO. (MALE)	PART NO. (FEMALE)
4.00MM	050M4-xxxGB-x	050F3-xxxGB-x
5.00MM	050M4-xxxGB-x	050F4-xxxGB-x

## ORDERING INFORMATION:

P/N 050 M4 - xxx GB - x

1                      2                      3

- BODY HEIGHT:  
"M4" H= 2.74MM
- NO. OF CONTACTS:  
020, 030, 040, 050, 060, 070, 080, 090, 100
- PACKAGE OPTION:  
"T" W/O PAD IN TUBE  
"R" W/O PAD IN TAPE & REEL