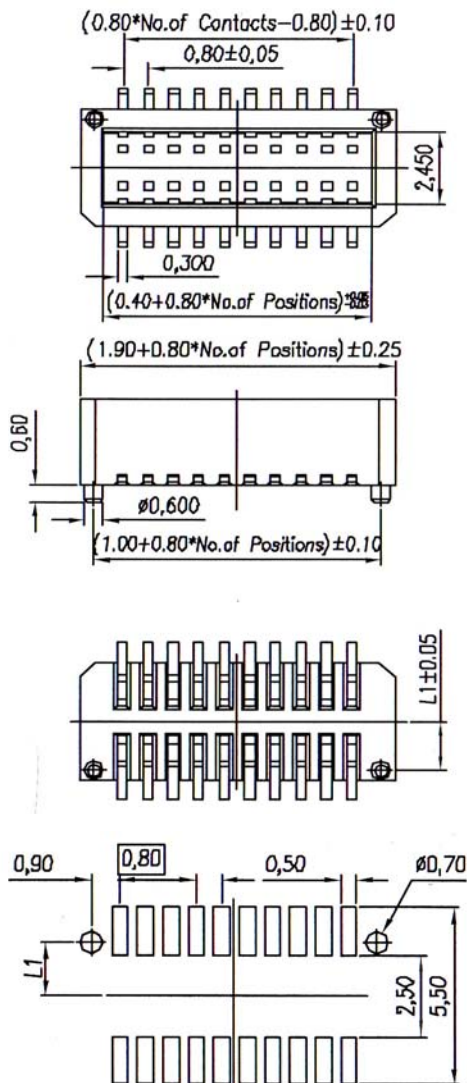
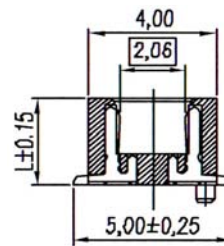


## 0.80MM (0.032") BOARD-TO-BOARD SMT SOCKET (A1)



Recommended P.C.Board Layout



### SPECIFICATIONS

**Current Rating:** 0.5 Amp  
**Dielectric Withstand:** 300V AC/DC  
**Insulator Resistance:** 1000 MΩ min.  
**Contact Resistance:** 20mΩ Max.  
**Operating Temperature:** -40°C to + 105°C

### MATERIALS

**Insulator:** Polyester, UL94V-0  
 Standard: Nylon-9T  
**Contacts:** Phosphor Bronze  
 All materials must be RoHS compliant.

STACKED HEIGHT	PART NO.	
	MALE (PLUG)	FEMALE (SOCKET)
4.0 mm	080M1 -xxxxV-x	080F1 -xxxxV-x
4.5 mm	080M2 -xxxxV-x	080F1 -xxxxV-x
5.0 mm	080M3 -xxxxV-x	080F1 -xxxxV-x
5.5 mm	080M4 -xxxxV-x	080F2 -xxxxV-x
6.0 mm	080M5 -xxxxV-x	080F2 -xxxxV-x
6.5 mm	080M6 -xxxxV-x	080F2 -xxxxV-x
7.0 mm	080M6 -xxxxV-x	080F3 -xxxxV-x
7.0 mm	080M7 -xxxxV-x	080F4 -xxxxV-x

### ORDERING INFORMATION:

P/N 080  $\frac{xx}{1}$  -  $\frac{xxx}{2}$   $\frac{G}{3}$  V -  $\frac{x}{4}$

#### 1. BODY HEIGHT:

"F1" L/L1 = 2.90/1.65mm  
 "F2" L/L1 = 3.40/1.65mm  
 "F3" L/L1 = 3.90/1.65mm  
 "F4" L/L1 = 3.90/1.25mm

#### 2. NO. OF CONTACTS:

008 ~ 050

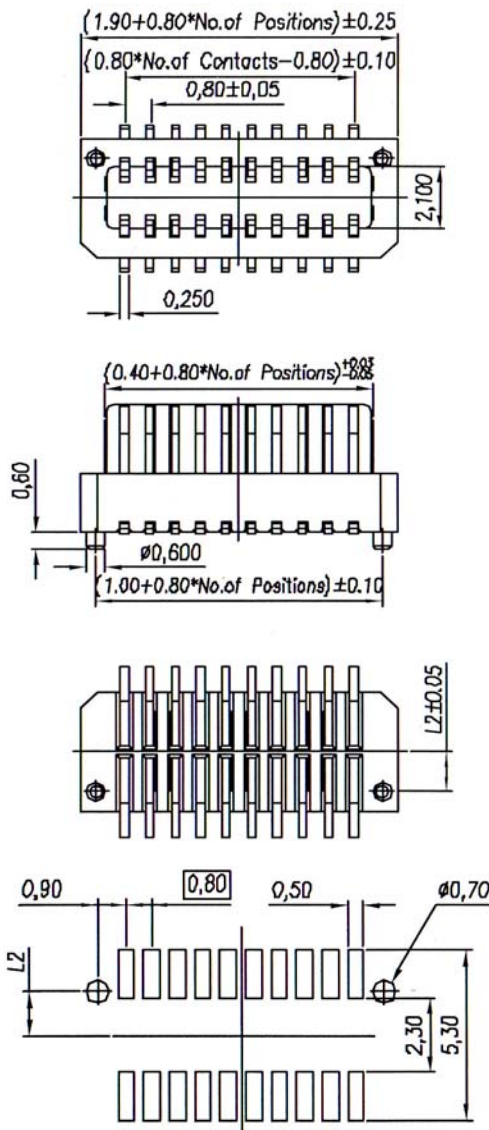
#### 3. CONTACT FINISH:

"G" FULL GOLD PLATED

#### 4. PACKAGE OPTION:

"T" W/O PAD IN TUBE  
 "R" W/O PAD IN TAPE & REEL

## 0.80MM (0.032") BOARD-TO-BOARD SMT PLUG (A2)



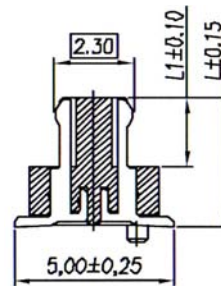
Recommended P.C.Board Layout

### SPECIFICATIONS

**Current Rating:** 0.5 Amp  
**Dielectric Withstand:** 300V AC/DC  
**Insulator Resistance:** 1000 MΩ min.  
**Contact Resistance:** 20mΩ Max.  
**Operating Temperature:** -40°C to + 105°C

### MATERIALS

**Insulator:** Polyester, UL94V-0  
 Standard: Nylon-9T  
**Contacts:** Phosphor Bronze  
 All materials must be RoHS compliant.



STACKED HEIGHT	PART NO.	
	MALE (PLUG)	FEMALE (SOCKET)
4.0 mm	080M1 -xxxxV-x	080F1-xxxxV-x
4.5 mm	080M2 -xxxxV-x	080F1-xxxxV-x
5.0 mm	080M3 -xxxxV-x	080F1-xxxxV-x
5.5 mm	080M4 -xxxxV-x	080F2-xxxxV-x
6.0 mm	080M5 -xxxxV-x	080F2-xxxxV-x
6.5 mm	080M6 -xxxxV-x	080F2-xxxxV-x
7.0 mm	080M6 -xxxxV-x	080F3-xxxxV-x
7.0 mm	080M7 -xxxxV-x	080F4-xxxxV-x

### ORDERING INFORMATION:

P/N 080  $\frac{xx}{1}$  -  $\frac{xxx}{2}$   $\frac{G}{3}$  V -  $\frac{x}{4}$

#### 1. BODY HEIGHT:

"M1" L/L1/L2 = 2.80/1.80/1.35mm  
 "M2" L/L1/L2 = 3.30/1.80/1.35mm  
 "M3" L/L1/L2 = 3.80/1.80/1.35mm  
 "M4" L/L1/L2 = 4.30/2.30/1.35mm  
 "M5" L/L1/L2 = 4.80/2.30/1.35mm  
 "M6" L/L1/L2 = 5.30/2.30/1.35mm  
 "M7" L/L1/L2 = 5.30/2.30/1.25mm

#### 2. NO. OF CONTACTS:

008 ~ 050

#### 3. CONTACT FINISH:

"G" FULL GOLD PLATED

#### 4. PACKAGE OPTION:

"T" W/O PAD IN TUBE

"R" W/O PAD IN TAPE & REEL

## 0.80MM (0.032") BOARD-TO-BOARD SMT SOCKET (B1)

### SPECIFICATIONS

**Current Rating:** 0.5 Amp

**Dielectric Withstand:** 300V AC

**Insulator Resistance:** 1000 MΩ min.

**Contact Resistance:** 20mΩ Max.

**Operating Temperature:** -40°C to + 105°C

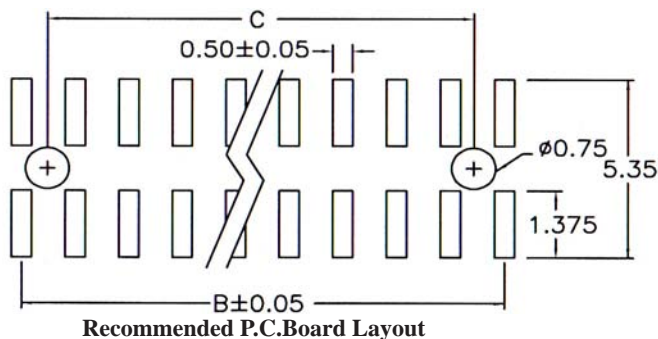
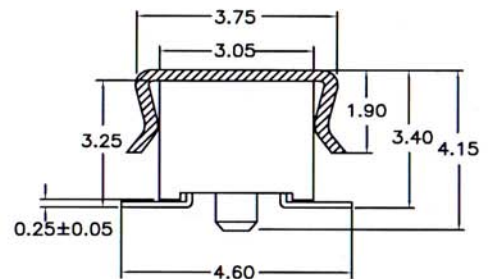
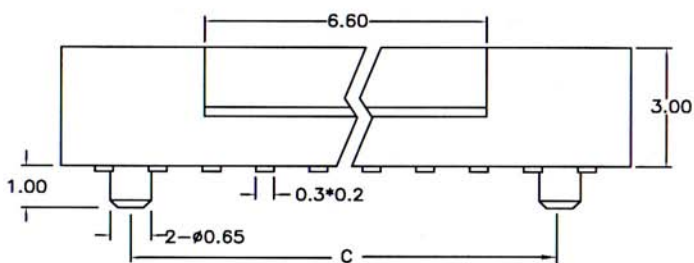
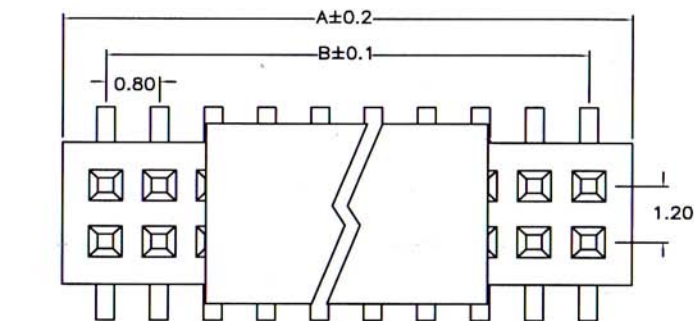
### MATERIALS

**Insulator:** Polyester, UL94V-0

Standard: Nylon-9T

**Contacts:** Phosphor Bronze

All materials must be RoHS compliant.



### DIMENSIONS:

A = 0.80 x No. of Positions / 2 + 0.26

B = 0.80 x No. of Positions / 2 - 0.80

C = 0.80 x No. of Positions / 2 - 1.60

### ORDERING INFORMATION:

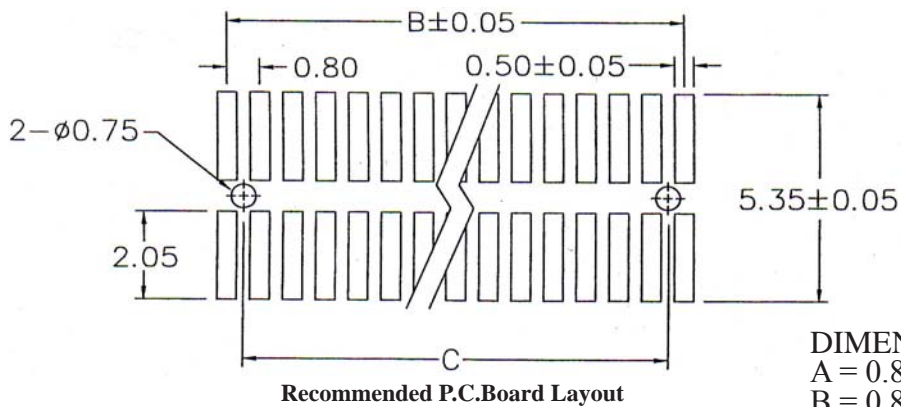
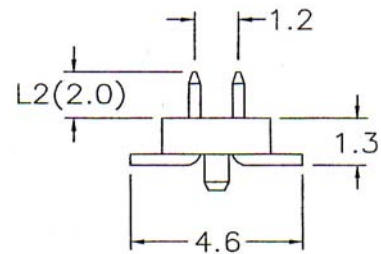
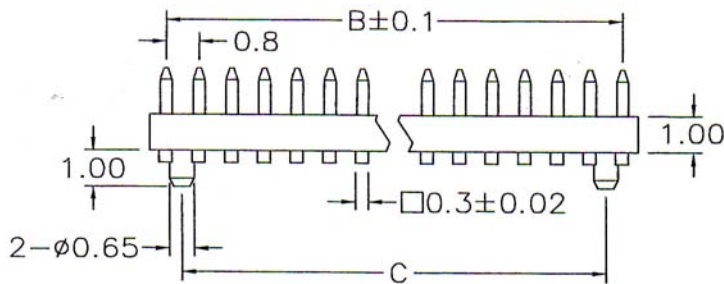
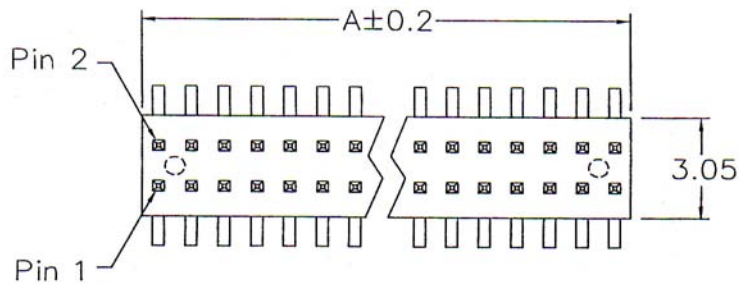
P/N 080  $\frac{xx}{1}$  -  $\frac{xxx}{2}$   $\frac{x}{3}$  B -  $\frac{x}{4}$

1. LOCATING PEG OPTION:  
"SG" W/O LOCATING PEG  
"SH" WITH LOCATING PEG
2. NO. OF CONTACTS:  
006 ~ 100
3. CONTACT FINISH:  
"G" FULL GOLD PLATED

4. PACKAGE OPTION:  
"T" W/O PAD IN TUBE  
"P" WITH PAD IN TUBE  
"Q" WITH PAD IN TAPE & REEL

NOTE: MATES WITH 080QN & 080QP  
PIN HEADERS

## 0.80MM (0.032") BOARD-TO-BOARD SMT PLUG (B2)



### DIMENSIONS:

$A = 0.80 \times (\text{No. of Positions} - 1) / 2 + 1.06$

$B = 0.80 \times (\text{No. of Positions} - 1) / 2$

$C = 0.80 \times (\text{No. of Positions} - 1) / 2 - 0.80$

### ORDERING INFORMATION:

P/N 080  $\frac{xx}{1} - \frac{xxx}{2} \frac{x}{3} B - \frac{x}{4}$

#### 1. LOCATING PEG OPTION:

"QN" L2=2.0mm W/O LOCATING PEG

"QP" L2=2.0mm WITH LOCATING PEG

#### 2. NO. OF CONTACTS:

006 ~ 100

#### 3. CONTACT FINISH:

"G" FULL GOLD PLATED

#### 4. PACKAGE OPTION:

"T" W/O PAD IN TUBE

"P" WITH PAD IN TUBE

"Q" WITH PAD IN TAPE & REEL

NOTE: MATES WITH 080SG & 080SH  
FEMALE HEADERS

## 0.80MM(0.032") BOARD-TO-BOARD SMT SOCKET (C1)

### SPECIFICATIONS

**Rating Current:** 0.5 Amperes

**Insulation Resistance:** 100MΩ Min.

**Withstanding Voltage:** 500V AC

**Contact Resistance:** 40mΩ Max.

**Operating Temperature:** -20°C to +105°C

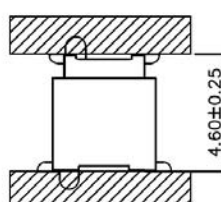
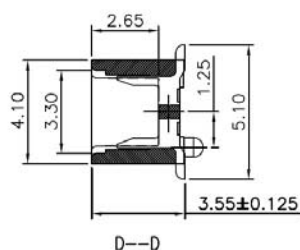
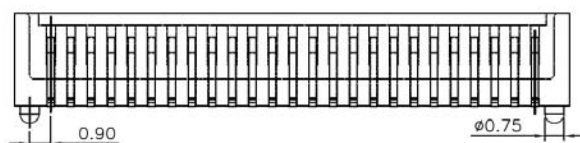
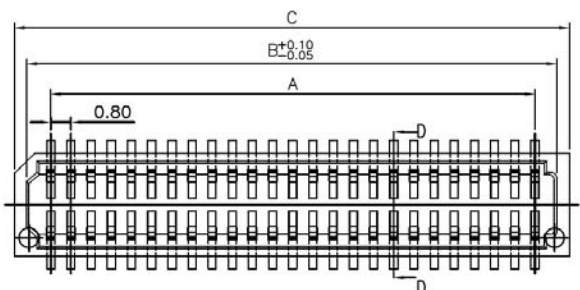
### MATERIALS

**Contact:** Phosphor Bronze

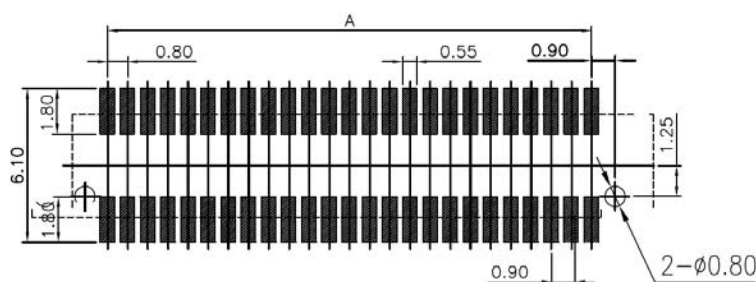
**Contact Plating:** Gold

**Insulator:** HTN (UL 94V-0)

\* RoHS & REACH compliant.



Mating Drawing



Recommended P.C. Board Layout

Contacts Dimensions			
No. of Position	A	B	C
010	3.20	4.80	6.40
020	7.20	8.80	10.40
030	11.20	12.80	14.40
040	15.20	16.80	18.40
050	19.20	20.80	22.40
060	23.20	24.80	26.40
070	27.20	28.80	30.40
080	31.20	32.80	34.40
090	35.20	36.80	38.40
100	39.20	40.80	42.40

STACKED HEIGHT	PART NO. (MALE)	PART NO. (FEMALE)
4.60MM	080M9-xxxGB-x	080F6-xxxGB-x

### ORDERING INFORMATION:

P/N 080  $\frac{F6}{1}$  -  $\frac{xxx}{2}$  GB -  $\frac{x}{3}$

1. BODY HEIGHT:

"F6" H= 3.55MM

2. NO. OF CONTACTS:

010, 020, 030, 040, 050, 060, 070, 080, 090, 100

3. PACKAGE OPTION:

"T" W/O PAD IN TUBE

"R" W/O PAD IN TAPE & REEL

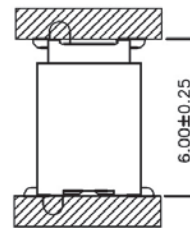
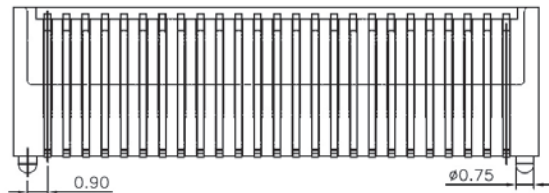
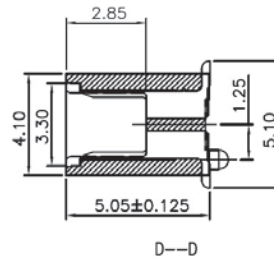
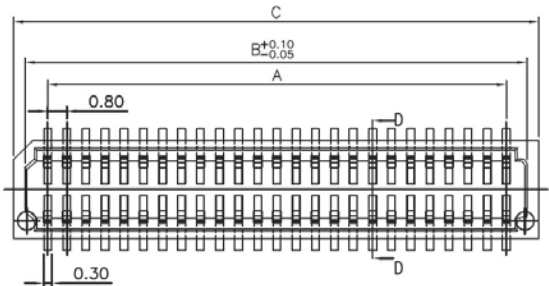
## 0.80MM(0.032") BOARD-TO-BOARD SMT SOCKET (C2)

### SPECIFICATIONS

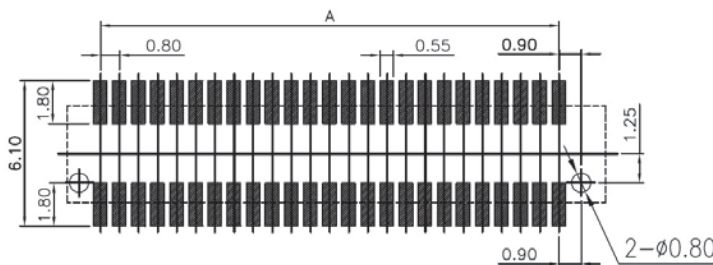
**Rating Current:** 0.5 Amperes  
**Insulation Resistance:** 100MΩ Min.  
**Withstanding Voltage:** 500V AC  
**Contact Resistance:** 40mΩ Max.  
**Operating Temperature:** -20°C to +105°C

### MATERIALS

**Contact:** Phosphor Bronze  
**Contact Plating:** Gold  
**Insulator:** HTN (UL 94V-0)  
 \* RoHS & REACH compliant.



Mating Drawing



Recommended P.C. Board Layout

Contacts Dimensions			
No. of Position	A	B	C
010	3.20	4.80	6.00
020	7.20	8.80	10.00
030	11.20	12.80	14.00
040	15.20	16.80	18.00
050	19.20	20.80	22.00
060	23.20	24.80	26.00
070	27.20	28.80	30.00
080	31.20	32.80	34.00
090	35.20	36.80	38.00
100	39.20	40.80	42.00

STACKED HEIGHT	PART NO. (MALE)	PART NO. (FEMALE)
6.00MM	080M9-xxxGB-x	080F7-xxxGB-x

### ORDERING INFORMATION:

P/N 080 F7 - xxx GB - x

- BODY HEIGHT:  
"F7" H= 5.05MM
- NO. OF CONTACTS:  
010, 020, 030, 040, 050, 060, 070, 080, 090, 100
- PACKAGE OPTION:  
"T" W/O PAD IN TUBE  
"R" W/O PAD IN TAPE & REEL

## 0.80MM(0.032") BOARD-TO-BOARD SMT SOCKET (C3)

### SPECIFICATIONS

**Rating Current:** 0.5 Amperes

**Insulation Resistance:** 100MΩ Min.

**Withstanding Voltage:** 500V AC

**Contact Resistance:** 40mΩ Max.

**Operating Temperature:** -20°C to +105°C

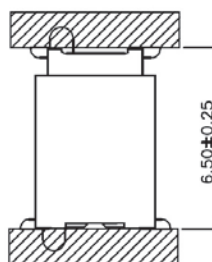
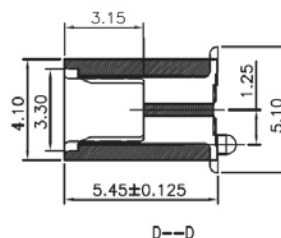
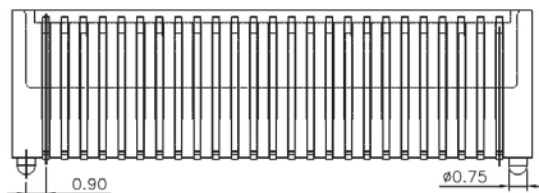
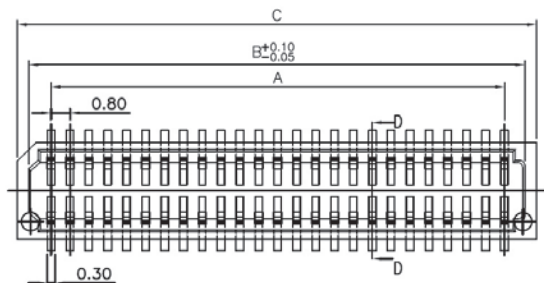
### MATERIALS

**Contact:** Phosphor Bronze

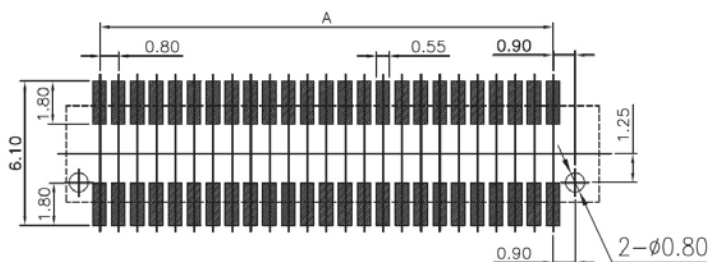
**Contact Plating:** Gold

**Insulator:** HTN (UL 94V-0)

\* RoHS & REACH compliant.



Mating Drawing



Recommended P.C. Board Layout

Contacts Dimensions			
No. of Position	A	B	C
010	3.20	4.80	6.00
020	7.20	8.80	10.00
030	11.20	12.80	14.00
040	15.20	16.80	18.00
050	19.20	20.80	22.00
060	23.20	24.80	26.00
070	27.20	28.80	30.00
080	31.20	32.80	34.00
090	35.20	36.80	38.00
100	39.20	40.80	42.00

STACKED HEIGHT	PART NO. (MALE)	PART NO. (FEMALE)
6.50MM	080M9-xxxGB-x	080F8-xxxGB-x

### ORDERING INFORMATION:

P/N 080  $\frac{F8}{1}$  -  $\frac{xxx}{2}$  GB -  $\frac{x}{3}$

- BODY HEIGHT:  
"F8" H= 5.45MM
- NO. OF CONTACTS:  
010, 020, 030, 040, 050, 060, 070, 080, 090, 100
- PACKAGE OPTION:  
"T" W/O PAD IN TUBE  
"R" W/O PAD IN TAPE & REEL

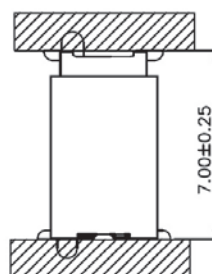
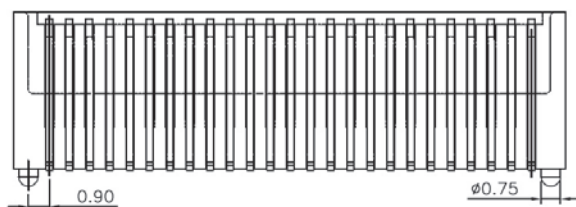
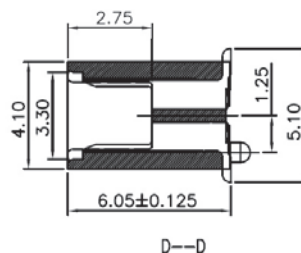
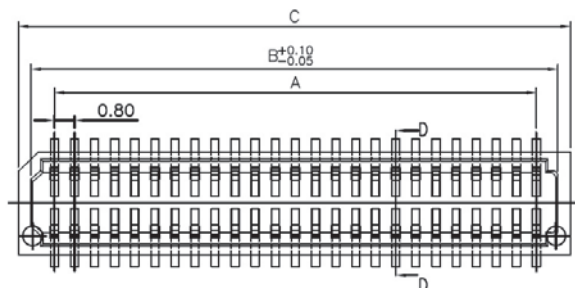
## 0.80MM(0.032") BOARD-TO-BOARD SMT SOCKET (C4)

### SPECIFICATIONS

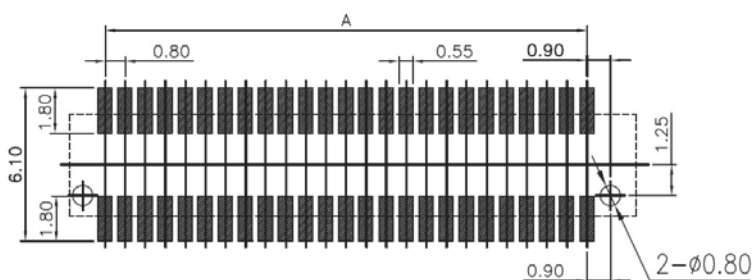
**Rating Current:** 0.5 Amperes  
**Insulation Resistance:** 100MΩ Min.  
**Withstanding Voltage:** 500V AC  
**Contact Resistance:** 40mΩ Max.  
**Operating Temperature:** -20°C to +105°C

### MATERIALS

**Contact:** Phosphor Bronze  
**Contact Plating:** Gold  
**Insulator:** HTN (UL 94V-0)  
 \* RoHS & REACH compliant.



Mating Drawing



Recommended P.C.Board Layout

Contacts Dimensions			
No. of Position	A	B	C
010	3.20	4.80	6.00
020	7.20	8.80	10.00
030	11.20	12.80	14.00
040	15.20	16.80	18.00
050	19.20	20.80	22.00
060	23.20	24.80	26.00
070	27.20	28.80	30.00
080	31.20	32.80	34.00
090	35.20	36.80	38.00
100	39.20	40.80	42.00

STACKED HEIGHT	PART NO. (MALE)	PART NO. (FEMALE)
7.00MM	080M9-xxxGB-x	080F9-xxxGB-x

### ORDERING INFORMATION:

**P/N 080  $\frac{F9}{1}$  -  $\frac{xxx}{2}$  GB -  $\frac{x}{3}$**

1. BODY HEIGHT:  
"F9" H= 6.05MM
2. NO. OF CONTACTS:  
010, 020, 030, 040, 050, 060, 070, 080, 090, 100
3. PACKAGE OPTION:  
"T" W/O PAD IN TUBE  
"R" W/O PAD IN TAPE & REEL



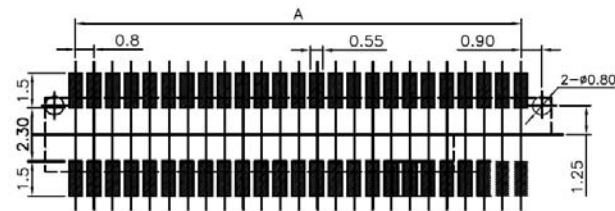
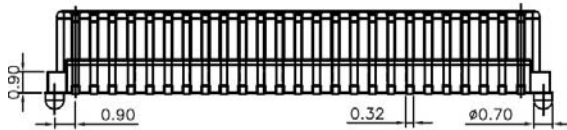
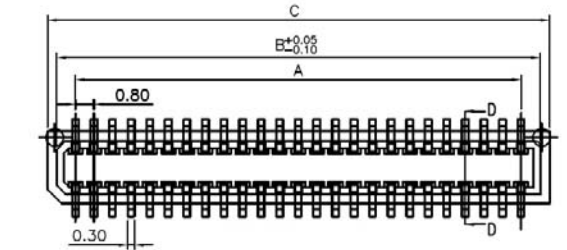
# 0.80MM(0.032") BOARD-TO-BOARD SMT PLUG (C5)

## SPECIFICATIONS

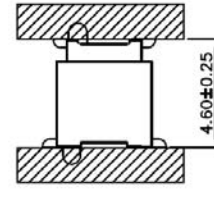
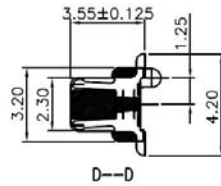
**Rating Current:** 0.5 Amperes  
**Insulation Resistance:** 100MΩ Min.  
**Withstanding Voltage:** 500V AC  
**Contact Resistance:** 40mΩ Max.  
**Operating Temperature:** -20°C to +105°C

## MATERIALS

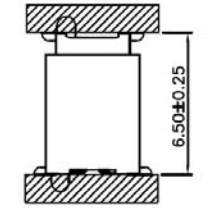
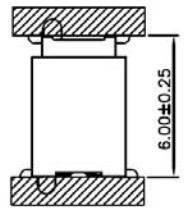
**Contact:** Phosphor Bronze  
**Contact Plating:** Gold  
**Insulator:** HTN (UL 94V-0)  
 \* RoHS & REACH compliant.



Recommended P.C.Board Layout

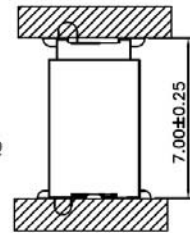


Mating Drawing 1



Mating Drawing 2

Mating Drawing 3



Mating Drawing 4

Contacts Dimensions			
No.	A	B	C
010	3.20	4.80	5.70
020	7.20	8.80	9.70
030	11.20	12.80	13.70
040	15.20	16.80	17.70
050	19.20	20.80	21.70
060	23.20	24.80	25.70
070	27.20	28.80	29.70
080	31.20	32.80	33.70
090	35.20	36.80	37.70
100	39.20	40.80	41.70

STACKED HEIGHT	PART NO. (MALE)	PART NO. (FEMALE)
4.60MM	080M9-xxxGB-x	080F6-xxxGB-x
6.00MM	080M9-xxxGB-x	080F7-xxxGB-x
6.50MM	080M9-xxxGB-x	080F8-xxxGB-x
7.00MM	080M9-xxxGB-x	080F9-xxxGB-x

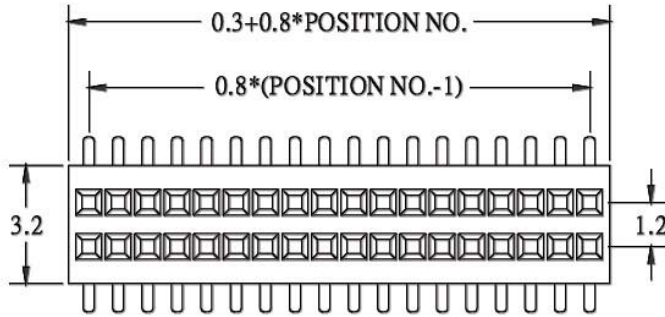
## ORDERING INFORMATION:

P/N 080 M9 - xxx GB - x

1                    2                    3

1. BODY HEIGHT:  
"M9" H= 3.55MM
2. NO. OF CONTACTS:  
010, 020, 030, 040, 050, 060, 070, 080, 090, 100
3. PACKAGE OPTION:  
"T" W/O PAD IN TUBE  
"R" W/O PAD IN TAPE & REEL

# 0.80MM x 1.20MM FEMALE HEADER DOUBLE ROW SMT TYPE PROFILE=3.25MM

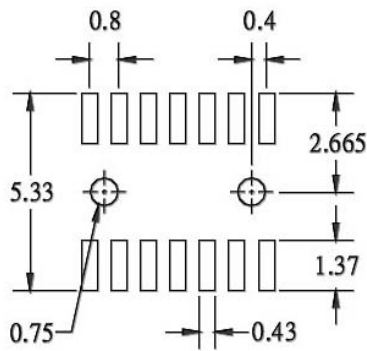
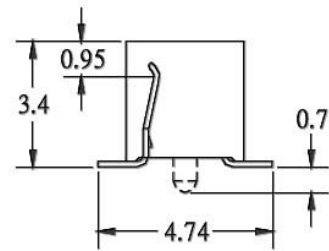
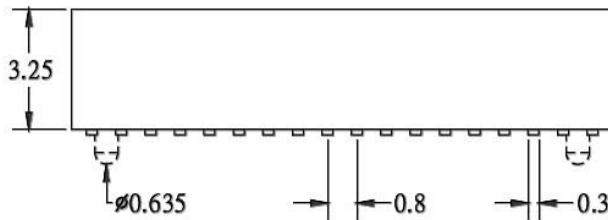


## SPECIFICATIONS

- Current Rating: 0.5 Amp
- Contact Resistance: 40mΩ Max.
- Insulator Resistance: 1000 MΩ Min.
- Dielectric Withstand: 250V AC For 1 Min.
- Operating Temperature: -40°C to +105°C

## MATERIALS

- Insulator: LCP, Glass Reinforced, UL94V-0
- Contacts: Phosphor Bronze
- All materials must be RoHS compliant.



Recommended P.C.Board Layout

## ORDERING INFORMATION:

P/N 080  $\frac{xx}{1}$  -  $\frac{xxx}{2}$   $\frac{SB}{3}$  -  $\frac{x}{4}$

1. CONTACT TYPE:  
"AA" WITHOUT LOCATING PEGS  
"AB" WITH LOCATING PEGS
2. NO. OF CONTACTS:  
006 ~ 100
3. CONTACT FINISH:  
"S" SELECTIVE GOLD PLATED
4. PAD & PACKAGE OPTION:  
"T" W/O PAD IN TUBE  
"P" WITH PAD IN TUBE  
"Q" WITH PAD IN TAPE & REEL

NOTE: PAD = PICK & PLACE PAD