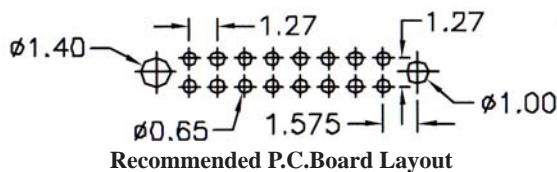
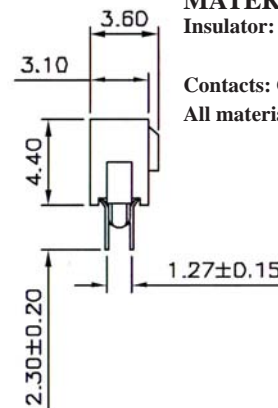
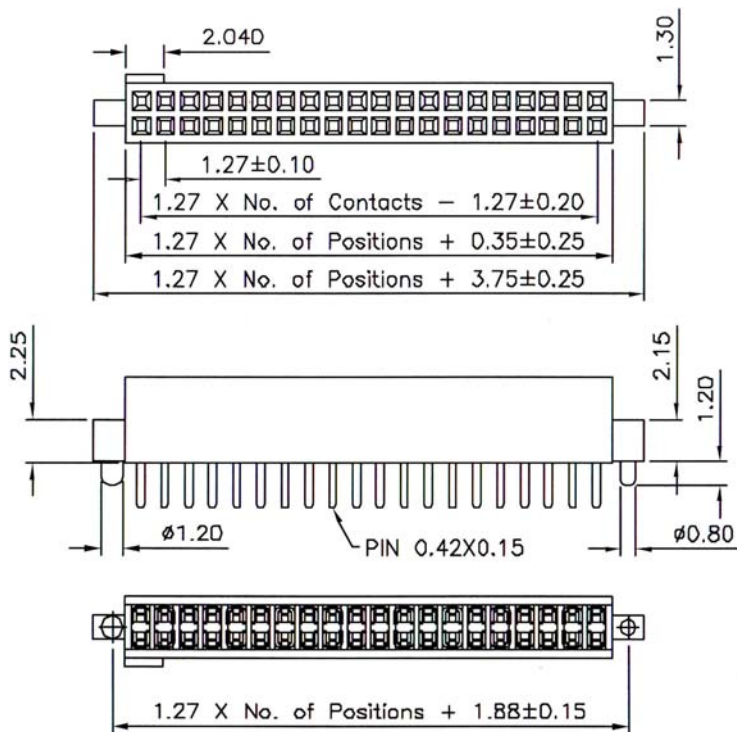


1.27MM x 1.27MM FEMALE HEADER DIP TYPE PROFILE=4.40MM (BTB-01)



SPECIFICATIONS

Current Rating: 1.0 Amp
 Dielectric Withstand: 300V AC
 Insulator Resistance: 1000 M Ω min.
 Contact Resistance: 20m Ω Max.
 Operating Temperature: -40 $^{\circ}$ C to + 105 $^{\circ}$ C

MATERIALS

Insulator: Polyester, UL94V-0
 Nylon-6T
 Contacts: Copper Alloy
 All materials must be RoHS compliant.

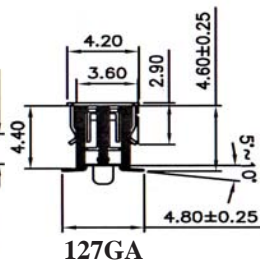
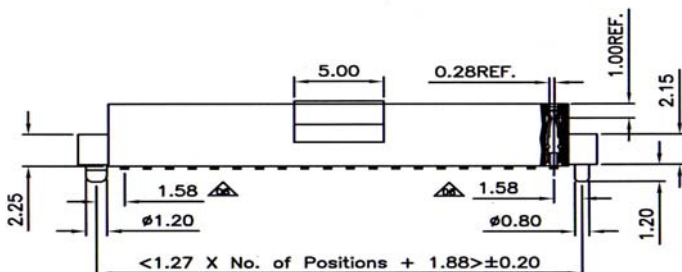
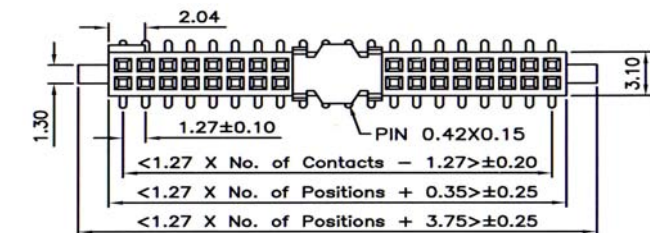
ORDERING INFORMATION:

P/N 1 2 7 BT - x x x x B - x
 1 2 3 4

- LOCATING PEG OPTION:
"BT" WITH LOCATING PEG
- NO. OF CONTACTS:
006 ~ 100
- CONTACT FINISH:
"G" FULL GOLD PLATED
"S" SELECTIVE GOLD PLATED
- PAD & PACKAGE OPTION:
"T" W/O PAD IN TUBE
"P" WITH PAD IN TUBE
"Q" WITH PAD IN TAPE & REEL

NOTE: MATES WITH 12D41-12D68
 & 12E41-12E68 (SEE PAGE F2203!)

1.27MM x 1.27MM FEMALE HEADER SMT TYPE PROFILE= 4.40MM (BTB-02)

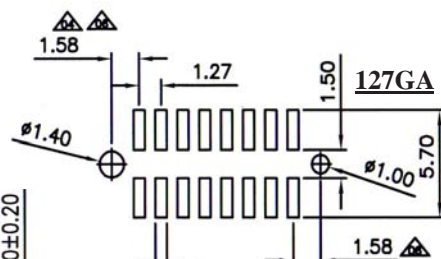
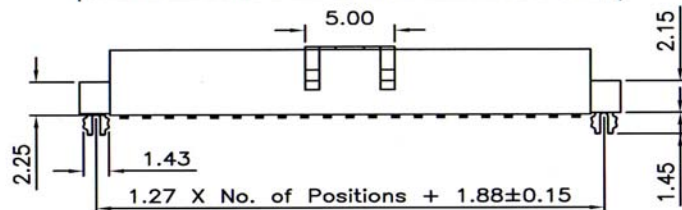
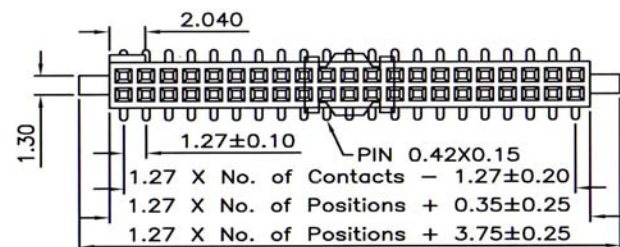


SPECIFICATIONS

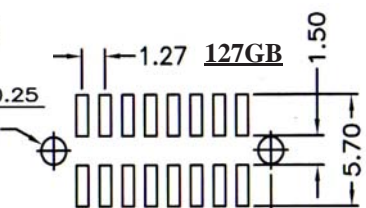
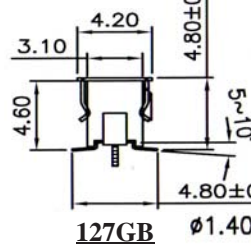
Current Rating: 1.0 Amp
Dielectric Withstand: 300V AC
Insulator Resistance: 1000 MΩ min.
Contact Resistance: 20mΩ Max.
Operating Temperature: -40°C to +105°C

MATERIALS

Insulator: Polyester LCP, UL94V-0
Contacts: Copper Alloy
All materials must be RoHS compliant.



Recommended P.C.Board Layout



Recommended P.C.Board Layout

ORDERING INFORMATION:

P/N 1 2 7 $\frac{x}{1}$ - $\frac{x}{2}$ $\frac{x}{3}$ B - $\frac{x}{4}$

1. MOUNTING TYPE OPTION:
"GA" POLAR KEY TYPE
"GB" BOARD LOCK TYPE
2. NO. OF CONTACTS:
010 ~ 100
3. CONTACT FINISH:
"G" FULL GOLD PLATED
"S" SELECTIVE GOLD PLATED
4. PAD & PACKAGE OPTION:
"T" W/O PAD IN TUBE
"P" WITH PAD IN TUBE
"Q" WITH PAD IN TAPE & REEL

NOTE: MATES WITH 12D41-12D68
& 12E41-12E68 (SEE NEXT PAGE!)

1.27MM x 1.27MM STACKED HEIGHTS OF FEMALE & BOX HEADERS (BTB-03)

TABLE 1:

STACKED HEIGHT	BOX HEADER (MALE)		FEMALE HEADER
	PART NO. (SMT TYPE)	DIM. B	PART NO. (SMT TYPE)
6.6	12E41-xxxxB-x	5.6	127GA-xxxxB-x or 127GB-xxxxB-x
7.8	12E42-xxxxB-x	6.8	
12.2	12E43-xxxxB-x	11.2	
10.0	12E44-xxxxB-x	9.0	
11.7	12E45-xxxxB-x	10.7	
16.6	12E46-xxxxB-x	15.6	
16.2	12E47-xxxxB-x	15.2	
15.1	12E48-xxxxB-x	14.1	
10.4	12E49-xxxxB-x	9.4	
13.2	12E50-xxxxB-x	12.2	
10.6	12E51-xxxxB-x	9.6	
11.3	12E53-xxxxB-x	10.3	
12.5	12E54-xxxxB-x	11.5	
12.0	12E55-xxxxB-x	11.0	
15.2	12E58-xxxxB-x	14.2	
19.9	12E59-xxxxB-x	18.9	
11.4	12E62-xxxxB-x	10.4	
11.2	12E64-xxxxB-x	10.2	
18.3	12E65-xxxxB-x	17.3	
14.5	12E66-xxxxB-x	13.5	
18.6	12E67-xxxxB-x	17.6	
19.6	12E68-xxxxB-x	18.6	

TABLE 2:

STACKED HEIGHT	BOX HEADER (MALE)		FEMALE HEADER
	PART NO. (SMT TYPE)	DIM. B	PART NO. (DIP TYPE)
6.45	12E41-xxxxB-x	5.6	127BT-xxxxB-x
7.65	12E42-xxxxB-x	6.8	
12.05	12E43-xxxxB-x	11.2	
9.85	12E44-xxxxB-x	9.0	
11.55	12E45-xxxxB-x	10.7	
16.45	12E46-xxxxB-x	15.6	
16.05	12E47-xxxxB-x	15.2	
14.95	12E48-xxxxB-x	14.1	
10.25	12E49-xxxxB-x	9.4	
13.05	12E50-xxxxB-x	12.2	
10.45	12E51-xxxxB-x	9.6	
11.15	12E53-xxxxB-x	10.3	
12.35	12E54-xxxxB-x	11.5	
11.85	12E55-xxxxB-x	11.0	
15.05	12E58-xxxxB-x	14.2	
19.75	12E59-xxxxB-x	18.9	
11.25	12E62-xxxxB-x	10.4	
11.05	12E64-xxxxB-x	10.2	
18.15	12E65-xxxxB-x	17.3	
14.35	12E66-xxxxB-x	13.5	
18.45	12E67-xxxxB-x	17.6	
19.45	12E68-xxxxB-x	18.6	

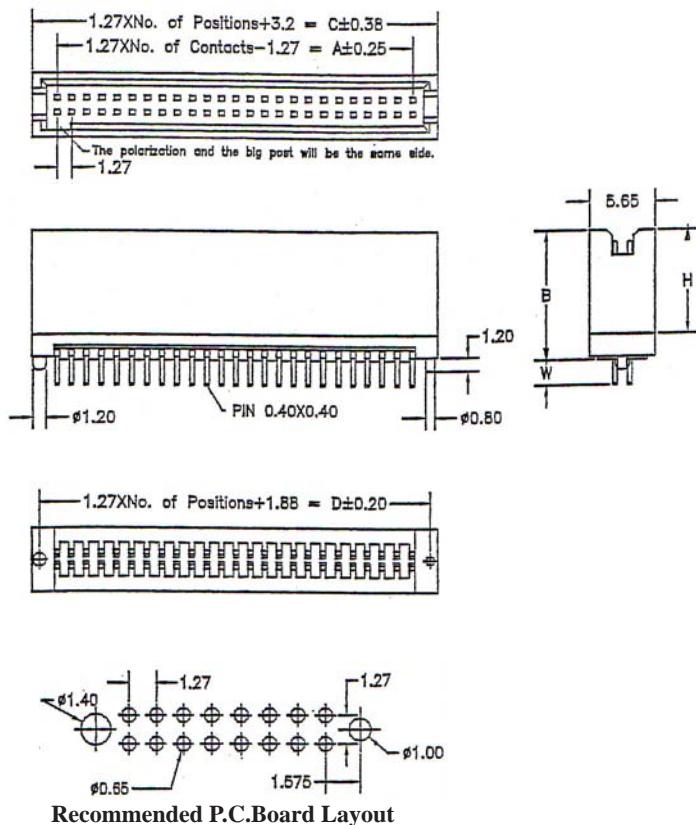
TABLE 3:

STACKED HEIGHT	BOX HEADER (MALE)		FEMALE HEADER
	PART NO. (DIP TYPE)	DIM. B	PART NO. (DIP TYPE)
6.05	12D41-xxxxB-x	5.7	127BT-xxxxB-x
7.65	12D42-xxxxB-x	7.3	
11.85	12D43-xxxxB-x	11.5	
9.65	12D44-xxxxB-x	9.3	
11.35	12D45-xxxxB-x	11.0	
16.25	12D46-xxxxB-x	15.9	
15.85	12D47-xxxxB-x	15.5	
14.75	12D48-xxxxB-x	14.4	
10.05	12D49-xxxxB-x	9.7	
12.85	12D50-xxxxB-x	12.5	
10.25	12D51-xxxxB-x	9.9	
10.95	12D53-xxxxB-x	10.6	
12.15	12D54-xxxxB-x	11.8	
11.65	12D55-xxxxB-x	11.3	
14.85	12D58-xxxxB-x	14.5	
19.55	12D59-xxxxB-x	19.2	
11.05	12D62-xxxxB-x	10.7	
10.85	12D64-xxxxB-x	10.5	
17.95	12D65-xxxxB-x	17.6	
14.15	12D66-xxxxB-x	13.8	
18.25	12D67-xxxxB-x	17.9	
19.25	12D68-xxxxB-x	18.9	

TABLE 4:

STACKED HEIGHT	BOX HEADER (MALE)		FEMALE HEADER
	PART NO. (DIP TYPE)	DIM. B	PART NO. (SMT TYPE)
6.2	12D41-xxxxB-x	5.7	127GA-xxxxB-x or 127GB-xxxxB-x
7.8	12D42-xxxxB-x	7.3	
12.0	12D43-xxxxB-x	11.5	
9.8	12D44-xxxxB-x	9.3	
11.5	12D45-xxxxB-x	11.0	
16.4	12D46-xxxxB-x	15.9	
16.0	12D47-xxxxB-x	15.5	
14.9	12D48-xxxxB-x	14.4	
10.2	12D49-xxxxB-x	9.7	
13.0	12D50-xxxxB-x	12.5	
10.4	12D51-xxxxB-x	9.9	
11.1	12D53-xxxxB-x	10.6	
12.3	12D54-xxxxB-x	11.8	
11.8	12D55-xxxxB-x	11.3	
15.0	12D58-xxxxB-x	14.5	
19.7	12D59-xxxxB-x	19.2	
11.2	12D62-xxxxB-x	10.7	
11.0	12D64-xxxxB-x	10.5	
18.1	12D65-xxxxB-x	17.6	
14.3	12D66-xxxxB-x	13.8	
18.4	12D67-xxxxB-x	17.9	
19.4	12D68-xxxxB-x	18.9	

1.27MM x 1.27MM BOX HEADERS DIP TYPE WITH VARIOUS PROFILES (BTB-04)



SPECIFICATIONS

Current Rating: 1.0 Amp
Dielectric Withstand: 300V AC
Insulator Resistance: 1000 MΩ min.
Contact Resistance: 20mΩ Max.
Operating Temperature: -40°C to + 105°C

MATERIALS

Insulator: Polyester, UL94V-0
 Nylon-6T
Contacts: Copper Alloy
All materials must be RoHS compliant.

HEIGHT CODE	DIM. B (mm)	HEIGHT CODE	DIM. B (mm)
D41	5.7	D53	10.6
D42	7.3	D54	11.8
D43	11.5	D55	11.3
D44	9.3	D58	14.5
D45	11.0	D59	19.2
D46	15.9	D62	10.7
D47	15.5	D64	10.5
D48	14.4	D65	17.6
D49	9.7	D66	13.8
D50	12.5	D67	17.9
D51	9.9	D68	18.9

ORDERING INFORMATION:

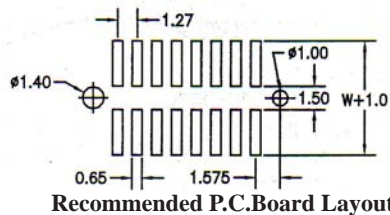
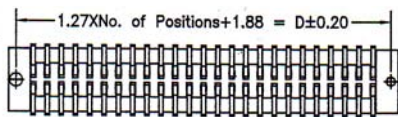
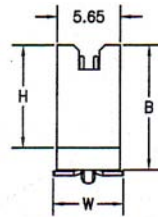
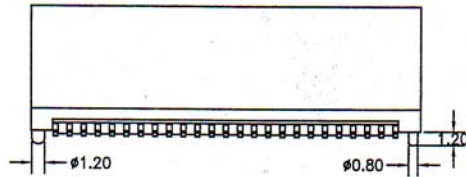
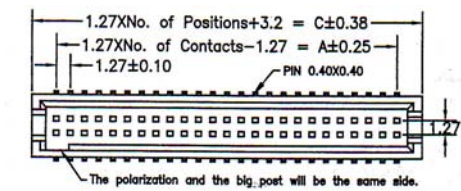
P/N 1 2 xxx - xxx x B - x
1 2 3 4

- HEIGHT OPTION:(W= 2.30MM)
 D41, D42, D43, D44, D45, D46, D47, D48,
 D49, D50, D51, D53, D54, D55, D58, D59,
 D62, D64, D65, D66, D67, D68
- NO. OF CONTACTS:
 010 ~ 100
- CONTACT FINISH:
 "G" FULL GOLD PLATED
 "S" SELECTIVE GOLD PLATED

- PAD & PACKAGE OPTION:
 "T" W/O PAD IN TUBE
 "P" WITH PAD IN TUBE
 "Q" WITH PAD IN TAPE & REEL

NOTE:1. MATES WITH 127GA, 127GB & 127BT
 2. STACKED HEIGHTS: PLEASE SEE
 PAGE F2203!

1.27MM x 1.27MM BOX HEADERS SMT TYPE WITH VARIOUS PROFILES (BTB-05)



SPECIFICATIONS

Current Rating: 1.0 Amp
Dielectric Withstand: 300V AC
Insulator Resistance: 1000 MΩ min.
Contact Resistance: 20mΩ Max.
Operating Temperature: -40°C to + 105°C

MATERIALS

Insulator: Polyester LCP, UL94V-0
Contacts: Copper Alloy
All materials must be RoHS compliant.

HEIGHT CODE	DIM. B (mm)	HEIGHT CODE	DIM. B (mm)
E41	5.6	E53	10.3
E42	6.8	E54	11.5
E43	11.2	E55	11.0
E44	9.0	E58	14.2
E45	10.7	E59	18.9
E46	15.6	E62	10.4
E47	15.2	E64	10.2
E48	14.1	E65	17.3
E49	9.4	E66	13.5
E50	12.2	E67	17.6
E51	9.6	E68	18.6

ORDERING INFORMATION:

P/N 1 2 xxx - xxx x B - x
1 2 3 4

- HEIGHT OPTION: (W= 6.30MM)
E41, E42, E43, E44, E45, E46, E47, E48, E49, E50, E51, E53, E54, E55, E58, E59, E62, E64, E65, E66, E67, E68
- NO. OF CONTACTS:
010 ~ 100
- CONTACT FINISH:
"G" FULL GOLD PLATED
"S" SELECTIVE GOLD PLATED

- PAD & PACKAGE OPTION:
"T" W/O PAD IN TUBE
"P" WITH PAD IN TUBE
"Q" WITH PAD IN TAPE & REEL

NOTE: 1. MATES WITH 127GA, 127GB & 127BT
 2. STACKED HEIGHTS: PLEASE SEE PAGE F2203!