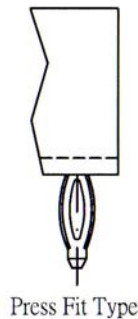
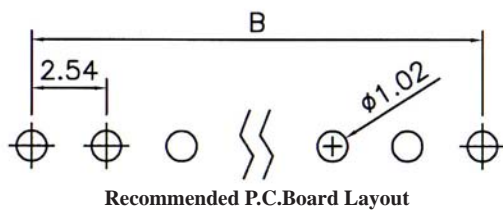
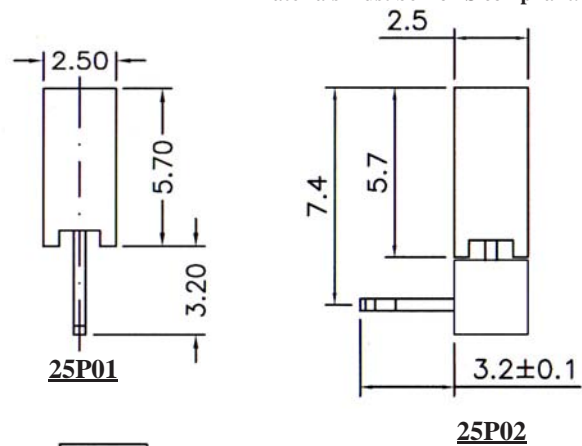
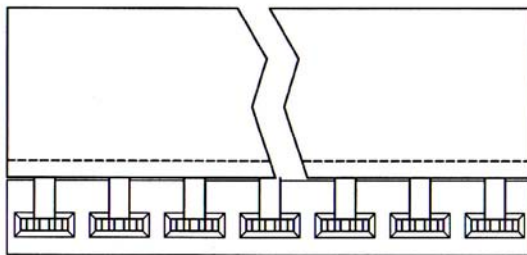
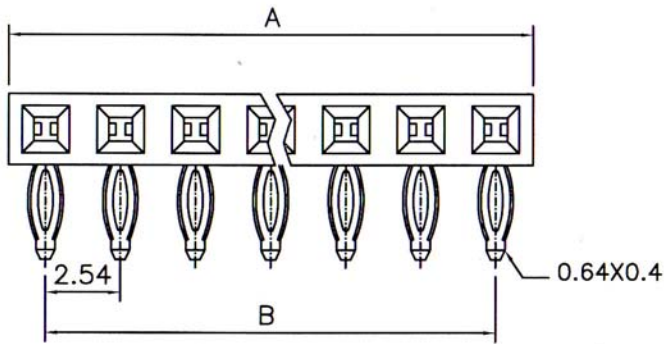


## 2.54MM(0.100") FEMALE HEADER SINGLE ROW PRESS FIT TYPE PROFILE=5.70MM



### SPECIFICATIONS

**Current Rating:** 3 Amp  
**Insulation Resistance:** 1000MΩ Min  
**Dielectric Withstanding:** 600V AC/DC  
**Contact Resistance:** 20mΩ Max.  
**Operating Temperature:** -40°C to +105°C

### MATERIALS

**Contact Material:** Phosphor Bronze  
**Insulation Material:** Polyester, UL 94V-0  
 P.B.T  
**Contact Plating:** Full Gold, Full Tin, Selective Plated  
**Standard:** Gold Flash all Over Nickel  
**All materials must be RoHS compliant.**

### DIMENSIONS:

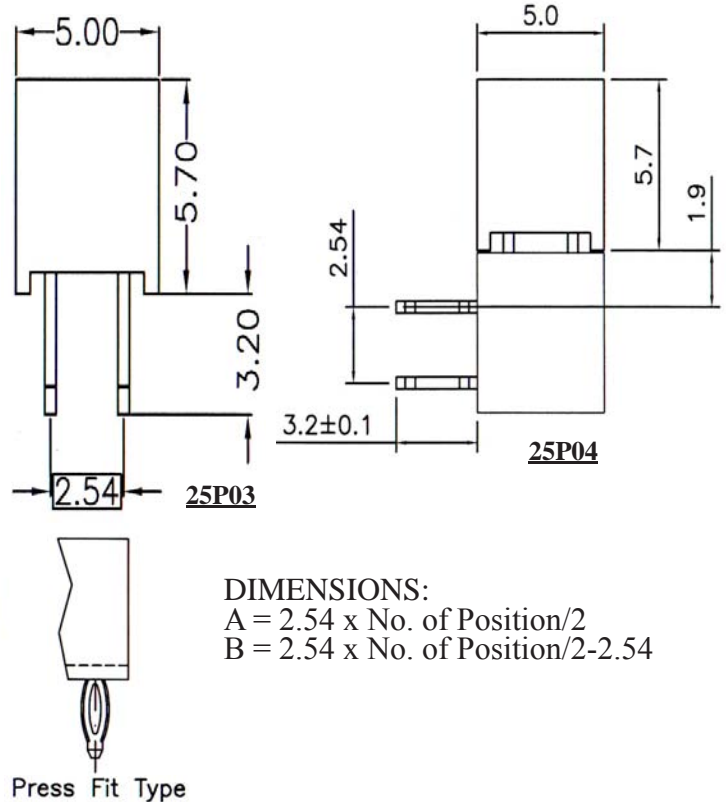
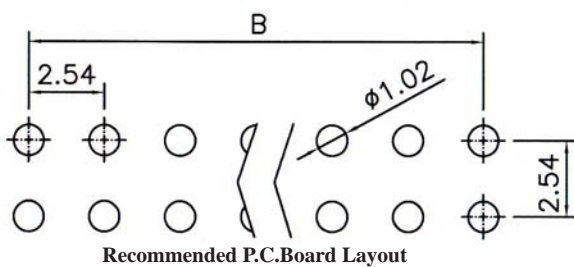
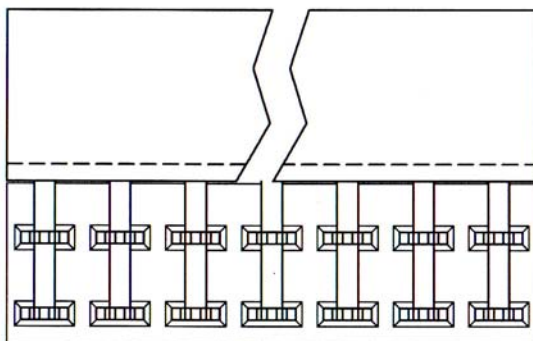
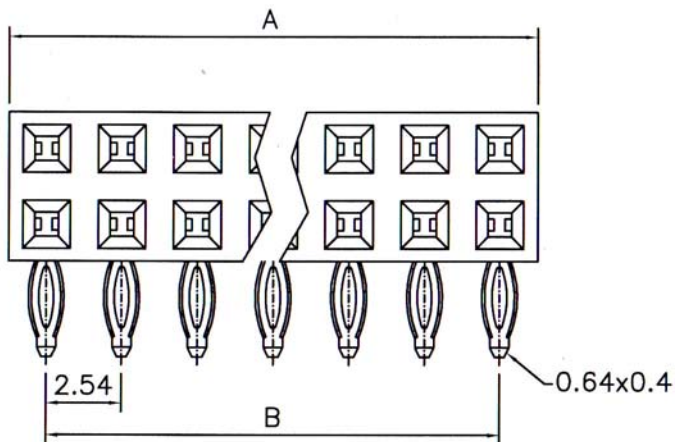
A = 2.54 x No. of Position  
 B = 2.54 x No. of Position - 2.54

### ORDERING INFORMATION:

P/N 25 P<sub>1</sub> xx - xx<sub>2</sub> xx<sub>3</sub> B

1. TERMINAL TYPE:  
 "P01" STRAIGHT TYPE  
 "P02" RIGHT ANGLE TYPE
2. NO. OF CONTACTS:  
 002 ~ 040
3. CONTACT FINISH:  
 "G" FULL GOLD PLATED  
 "T" FULL TIN PLATED

## 2.54MM(0.100") FEMALE HEADER DOUBLE ROW PRESS FIT TYPE PROFILE=5.70MM



### SPECIFICATIONS

Current Rating: 3 Amp  
 Insulation Resistance: 1000MΩ Min  
 Dielectric Withstanding: 600V AC/DC  
 Contact Resistance: 20mΩ Max.  
 Operating Temperature: -40°C to +105°C

### MATERIALS

Contact Material: Phosphor Bronze  
 Insulation Material: Polyester, UL 94V-0  
 P.B.T  
 Contact Plating: Full Gold, Full Tin, Selective Plated  
 Standard: Gold Flash all Over Nickel  
 All materials must be RoHS compliant.

### DIMENSIONS:

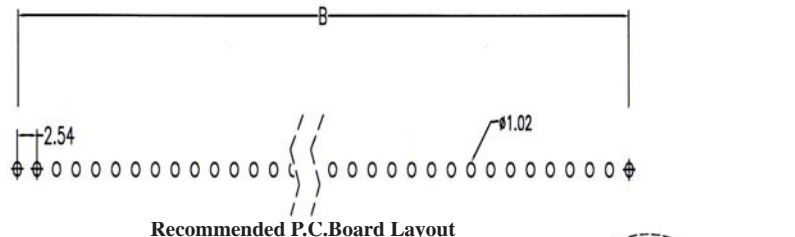
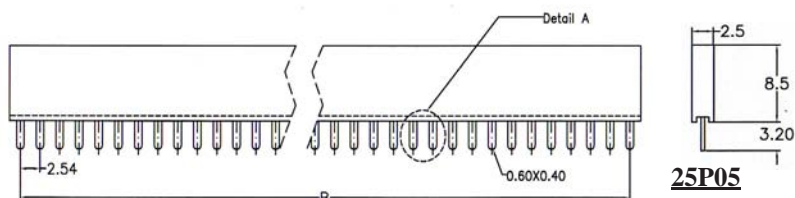
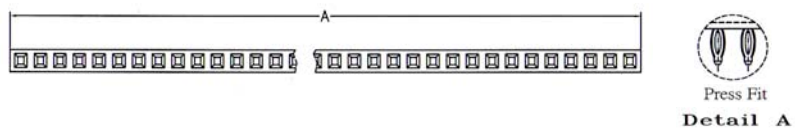
A = 2.54 x No. of Position/2  
 B = 2.54 x No. of Position/2 - 2.54

### ORDERING INFORMATION:

P/N 25  $\frac{P_{xx}}{1}$  -  $\frac{xxx}{2}$   $\frac{xx}{3}$  B

1. TERMINAL TYPE:  
 "P03" STRAIGHT TYPE  
 "P04" RIGHT ANGLE TYPE
2. NO. OF CONTACTS:  
 004 ~ 080
3. CONTACT FINISH:  
 "G" FULL GOLD PLATED  
 "T" FULL TIN PLATED

## 2.54MM(0.100") FEMALE HEADER STRAIGHT PRESS FIT TYPE PROFILE=8.50MM



### SPECIFICATIONS

**Current Rating:** 3 Amp  
**Insulation Resistance:** 1000MΩ Min  
**Dielectric Withstanding:** 600V AC/DC  
**Contact Resistance:** 20mΩ Max.  
**Operating Temperature:** -40°C to +105°C

### MATERIALS

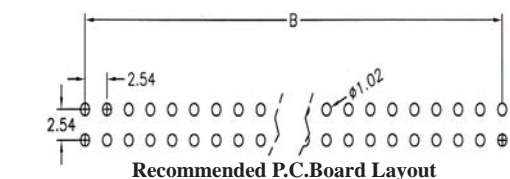
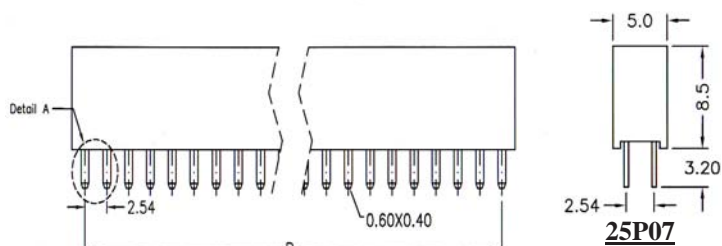
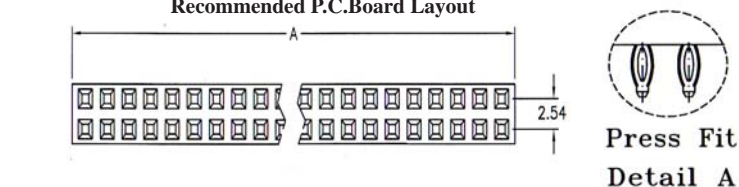
**Contact Material:** Phosphor Bronze  
**Insulation Material:** Polyester, UL 94V-0 P.B.T  
**Contact Plating:** Full Gold, Full Tin, Selective Plated  
**Standard:** Gold Flash all Over Nickel  
**All materials must be RoHS compliant.**

### 25P05

**DIMENSIONS:**  
 A = 2.54 x No. of Position  
 B = 2.54 x No. of Position-2.54

### 25P07

**DIMENSIONS:**  
 A = 2.54 x No. of Position/2  
 B = 2.54 x No. of Position/2-2.54

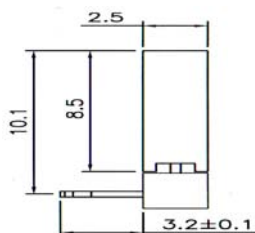
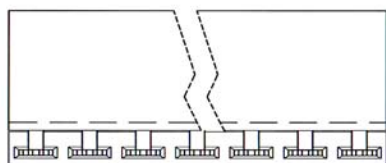
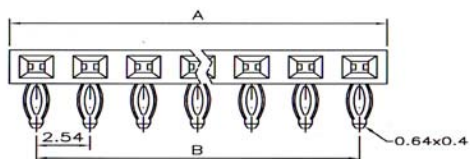


## ORDERING INFORMATION:

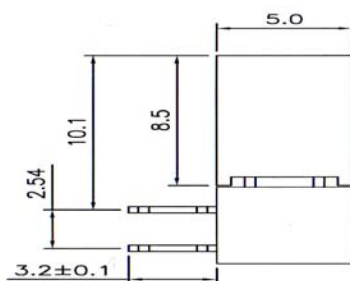
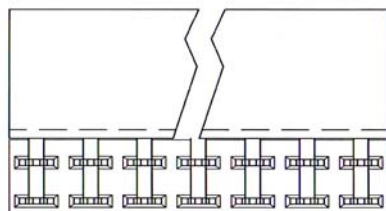
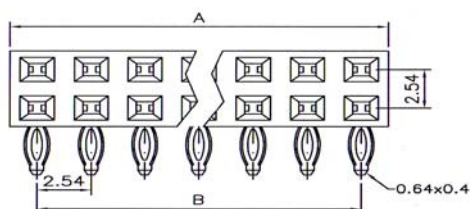
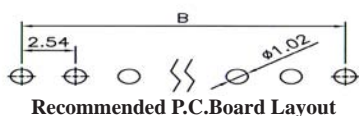
**P/N 25  $\frac{P}{1} \frac{XX}{2} - \frac{XXX}{3} \frac{X}{3} B$**

1. NO. OF ROWS:  
 "P05" SINGLE ROW  
 "P07" DOUBLE ROW
2. NO. OF CONTACTS:  
 002 ~ 040 FOR SINGLE ROW  
 004 ~ 080 FOR DOUBLE ROW
3. CONTACT FINISH:  
 "G" FULL GOLD PLATED  
 "T" FULL TIN PLATED

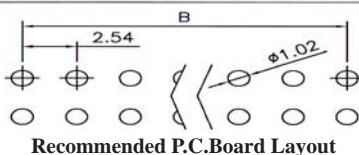
## 2.54MM(0.100") FEMALE HEADER RIGHT ANGLE PRESS FIT TYPE PROFILE=8.50MM



**25P06**



**25P08**



### SPECIFICATIONS

**Current Rating:** 3 Amp  
**Insulation Resistance:** 1000MΩ Min  
**Dielectric Withstanding:** 600V AC/DC  
**Contact Resistance:** 20mΩ Max.  
**Operating Temperature:** -40°C to +105°C

### MATERIALS

**Contact Material:** Phosphor Bronze  
**Insulation Material:** Polyester, UL 94V-0  
 P.B.T  
**Contact Plating:** Full Gold, Full Tin, Selective Plated  
**Standard:** Gold Flash all Over Nickel  
**All materials must be RoHS compliant.**

### 25P06

#### DIMENSIONS:

A = 2.54 x No. of Position + 0.4  
 B = 2.54 x No. of Position - 2.54

### 25P08

#### DIMENSIONS:

A = 2.54 x No. of Position / 2 + 0.4  
 B = 2.54 x No. of Position / 2 - 2.54

## ORDERING INFORMATION:

**P/N 25  $\frac{P_{1} \times \times}{1} - \frac{\times \times \times \times}{2} \frac{B}{3}$**

1. NO. OF ROWS:  
 "P06" SINGLE ROW  
 "P08" DOUBLE ROW
2. NO. OF CONTACTS:  
 002 ~ 040 FOR SINGLE ROW  
 004 ~ 080 FOR DOUBLE ROW
3. CONTACT FINISH:  
 "G" FULL GOLD PLATED  
 "T" FULL TIN PLATED

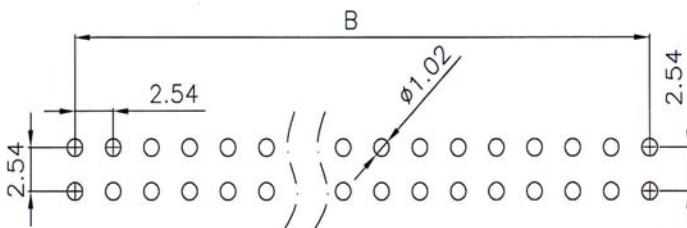
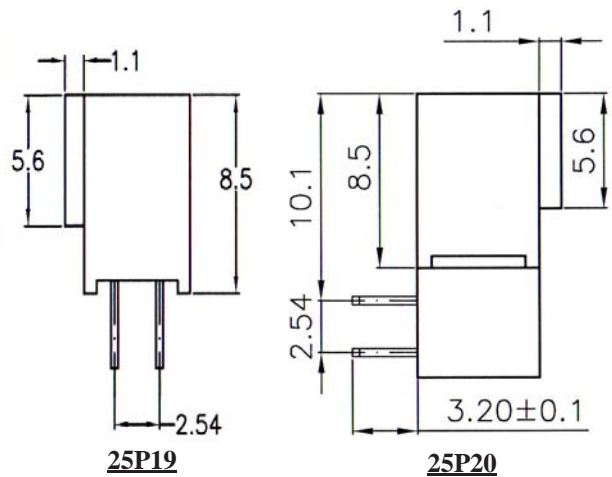
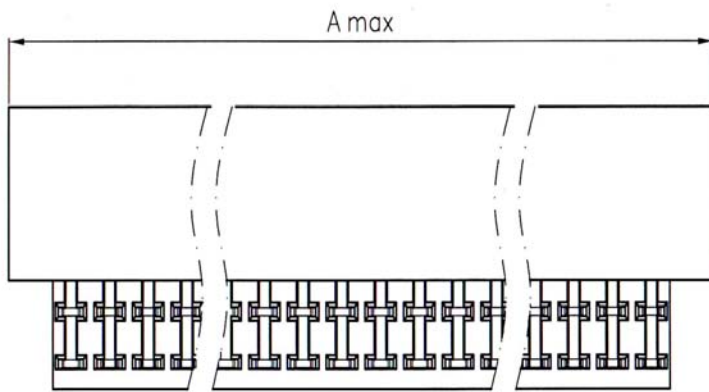
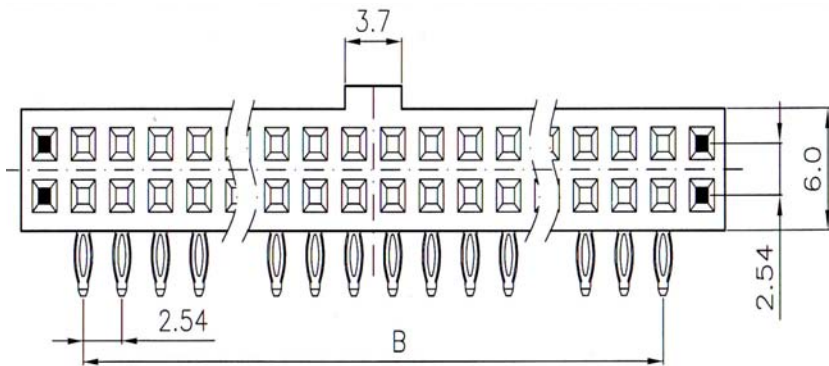
## 2.54MM(0.100") FEMALE HEADER DOUBLE ROW PRESS FIT TYPE PROFILE=8.50MM

### SPECIFICATIONS

**Current Rating:** 3 Amp  
**Insulation Resistance:** 1000MΩ Min  
**Dielectric Withstanding:** 600V AC/DC  
**Contact Resistance:** 20mΩ Max.  
**Operating Temperature:** -40°C to +105°C

### MATERIALS

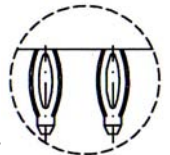
**Contact Material:** Phosphor Bronze  
**Insulation Material:** Polyester, UL 94V-0  
 P.B.T  
**Contact Plating:** Full Gold, Full Tin, Selective Plated  
**Standard:** Gold Flash all Over Nickel  
**All materials must be RoHS compliant.**



Recommended P.C.Board Layout

### DIMENSIONS:

$A = 2.54 \times (\text{No. of Positions} + 4) / 2$   
 $B = 2.54 \times \text{No. of Positions} / 2 - 2.54$



Press Fit

### ORDERING INFORMATION:

**P/N 25  $\frac{P}{1} \frac{XX}{2} - \frac{XXX}{3} B$**

1. TERMINAL TYPE:  
 "P19" STRAIGHT TYPE  
 "P20" RIGHT ANGLE TYPE
2. NO. OF CONTACTS:  
 004 ~ 064
3. CONTACT FINISH:  
 "G" FULL GOLD PLATED  
 "T" FULL TIN PLATED

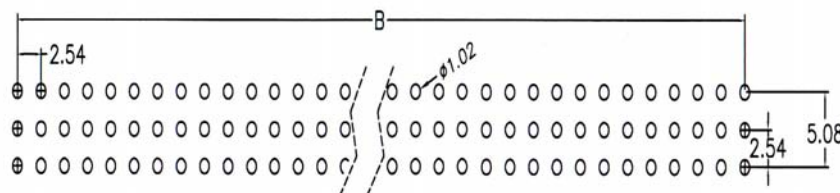
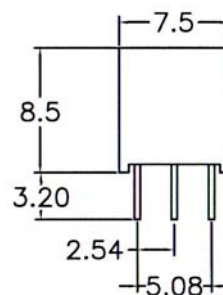
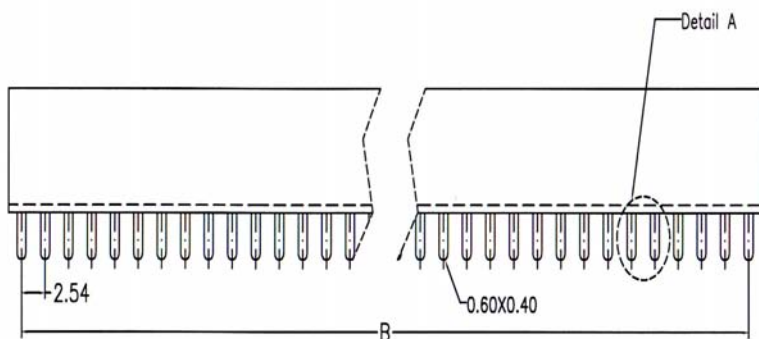
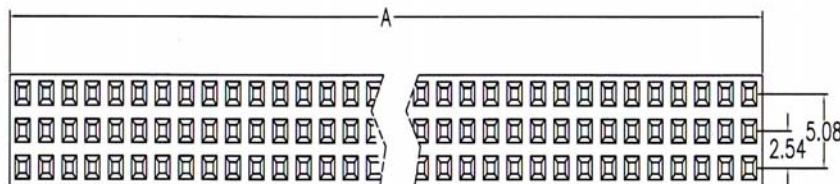
## 2.54MM(0.100") FEMALE HEADER TRIPLE ROW PRESS FIT TYPE PROFILE=8.50MM

### SPECIFICATIONS

**Current Rating:** 3 Amp  
**Insulation Resistance:** 1000MΩ Min  
**Dielectric Withstanding:** 600V AC/DC  
**Contact Resistance:** 20mΩ Max.  
**Operating Temperature:** -40°C to +105°C

### MATERIALS

**Contact Material:** Phosphor Bronze  
**Insulation Material:** Polyester, UL 94V-0  
 P.B.T  
**Contact Plating:** Full Gold, Full Tin, Selective Plated  
**Standard:** Gold Flash all Over Nickel  
**All materials must be RoHS compliant.**



Recommended P.C.Board Layout



Press Fit

### DIMENSIONS:

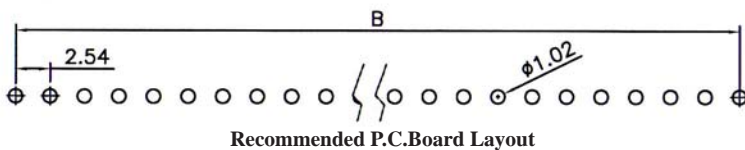
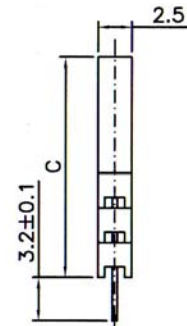
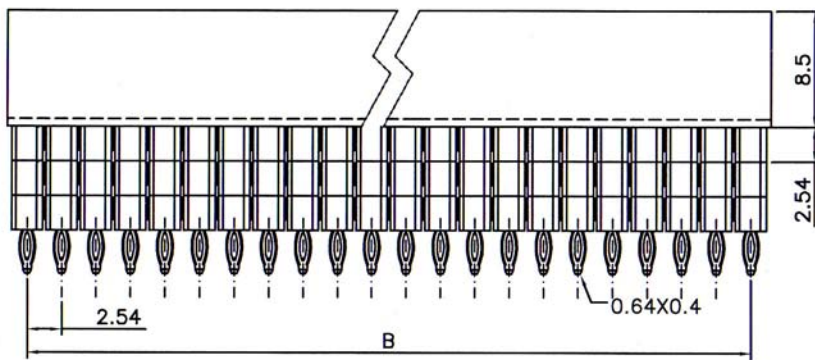
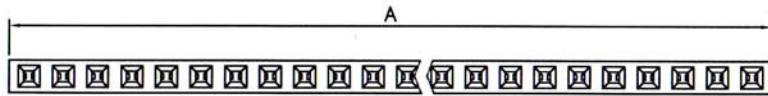
$A = 2.54 \times \text{No. of Positions} / 3$   
 $B = 2.54 \times \text{No. of Positions} / 3 - 2.54$

### ORDERING INFORMATION:

**P/N 25 P09 -  $\frac{x}{1}$   $\frac{x}{2}$   $\frac{x}{3}$  B**

1. TERMINAL TYPE:  
"P09" STRAIGHT TYPE
2. NO. OF CONTACTS:  
006 ~ 120
3. CONTACT FINISH:  
"G" FULL GOLD PLATED  
"T" FULL TIN PLATED

## 2.54MM(0.100") ELEVATED FEMALE HEADER SINGLE ROW PRESS FIT TYPE



### SPECIFICATIONS

**Current Rating:** 3 Amp  
**Insulation Resistance:** 1000MΩ Min  
**Dielectric Withstanding:** 600V AC/DC  
**Contact Resistance:** 20mΩ Max.  
**Operating Temperature:** -40°C to +105°C

### MATERIALS

**Contact Material:** Phosphor Bronze  
**Insulation Material:** Polyester, UL 94V-0 P.B.T  
**Contact Plating:** Full Gold, Full Tin, Selective Plated  
**Standard:** Gold Flash all Over Nickel  
**All materials must be RoHS compliant.**

### DIMENSIONS:

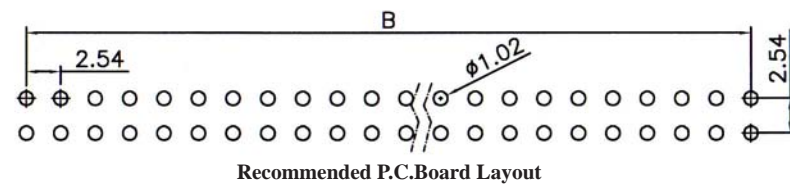
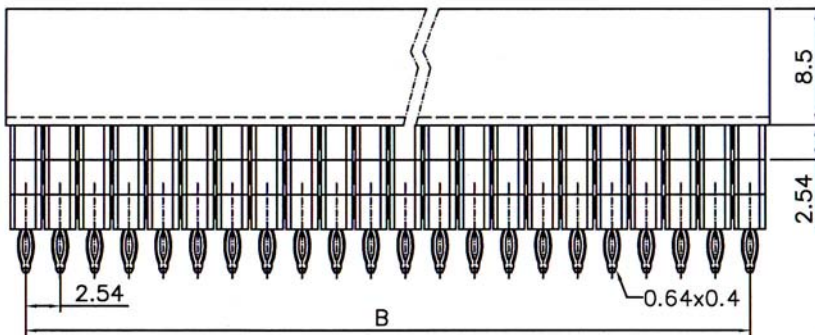
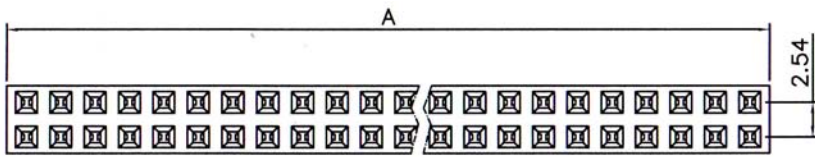
A	2.54 x No. of Positions+0.4			
B	2.54 x No. of Positions-2.54			
C (Code)	P11	P12	P13	P14
	11.05	13.59	16.13	18.67

### ORDERING INFORMATION:

**P/N 2 5  $\frac{P_{xx}}{1} - \frac{xxx}{2} \frac{x}{3} B - \frac{x}{4}$**

- ELEVATED HEIGHT:  
 "P11" C=11.05mm  
 "P12" C=13.59mm  
 "P13" C=16.13mm  
 "P14" C=18.67mm
- NO. OF CONTACTS:  
 002 ~ 040
- CONTACT FINISH:  
 "G" FULL GOLD PLATED  
 "T" FULL TIN PLATED
- PACKAGE OPTION:  
 "T" W/O PAD IN TUBE

## 2.54MM(0.100") ELEVATED FEMALE HEADER DOUBLE ROW PRESS FIT TYPE

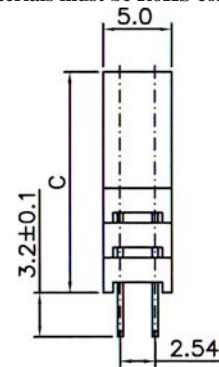


### SPECIFICATIONS

**Current Rating:** 3 Amp  
**Insulation Resistance:** 1000MΩ Min  
**Dielectric Withstanding:** 600V AC/DC  
**Contact Resistance:** 20mΩ Max.  
**Operating Temperature:** -40°C to +105°C

### MATERIALS

**Contact Material:** Phosphor Bronze  
**Insulation Material:** Polyester, UL 94V-0  
 P.B.T  
**Contact Plating:** Full Gold, Full Tin, Selective Plated  
**Standard:** Gold Flash all Over Nickel  
**All materials must be RoHS compliant.**



### DIMENSIONS:

A	2.54 x No. of Positions/2+0.4			
B	2.54 x No. of Positions/2-2.54			
C (Code)	P21	P22	P23	P24
	11.05	13.59	16.13	18.67

### ORDERING INFORMATION:

**P/N 2 5  $\frac{P_{xx}}{1} - \frac{xxx}{2} \frac{x}{3} B - \frac{x}{4}$**

- ELEVATED HEIGHT:  
 "P21" C=11.05mm  
 "P22" C=13.59mm  
 "P23" C=16.13mm  
 "P24" C=18.67mm
- NO. OF CONTACTS:  
 004 ~ 080
- CONTACT FINISH:  
 "G" FULL GOLD PLATED  
 "T" FULL TIN PLATED
- PACKAGE OPTION:  
 "T" W/O PAD IN TUBE



## 2.54MM(0.100") ELEVATED FEMALE HEADER TRIPLE ROW PRESS FIT TYPE

### SPECIFICATIONS

**Current Rating:** 3 Amp

**Insulation Resistance:** 1000MΩ Min

**Dielectric Withstanding:** 600V AC/DC

**Contact Resistance:** 20mΩ Max.

**Operating Temperature:** -40°C to +105°C

### MATERIALS

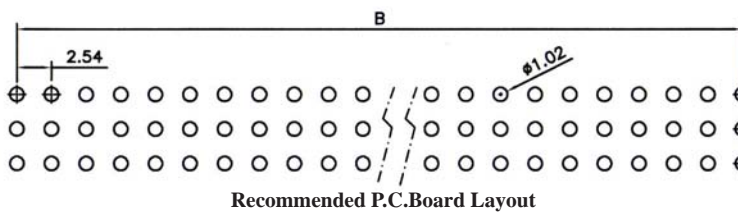
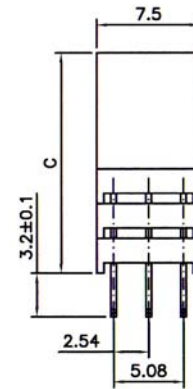
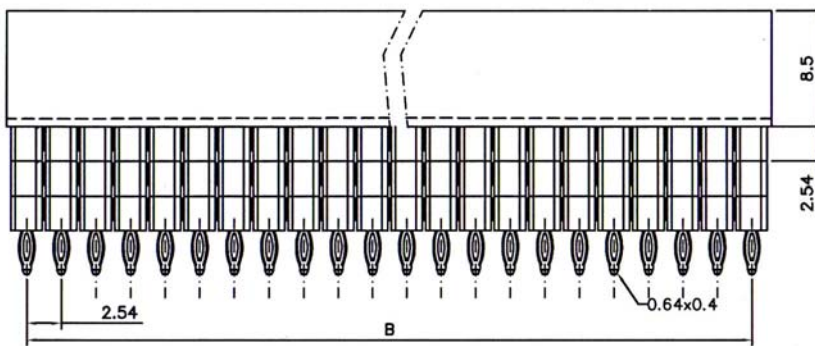
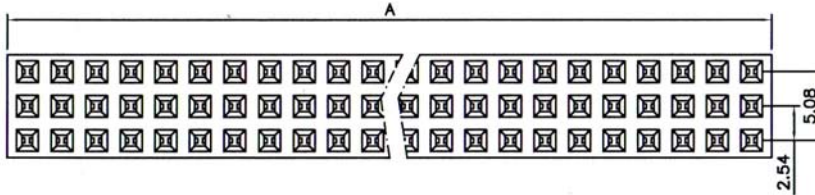
**Contact Material:** Phosphor Bronze

**Insulation Material:** Polyester, UL 94V-0  
P.B.T

**Contact Plating:** Full Gold, Full Tin, Selective Plated

**Standard:** Gold Flash all Over Nickel

**All materials must be RoHS compliant.**



### DIMENSIONS:

A	2.54 x No. of Positions/3+0.4			
B	2.54 x No. of Positions/3-2.54			
C (Code)	P31	P32	P33	P34
	11.05	13.59	16.13	18.67

### ORDERING INFORMATION:

**P/N 2 5  $\frac{P_{xx}}{1} - \frac{xxx}{2} \frac{x}{3} B - \frac{x}{4}$**

**1. ELEVATED HEIGHT:**

"P31" C=11.05mm

"P32" C=13.59mm

"P33" C=16.13mm

"P34" C=18.67mm

**2. NO. OF CONTACTS:**

009 ~ 096

**3. CONTACT FINISH:**

"G" FULL GOLD PLATED

"T" FULL TIN PLATED

**4. PACKAGE OPTION:**

"T" W/O PAD IN TUBE