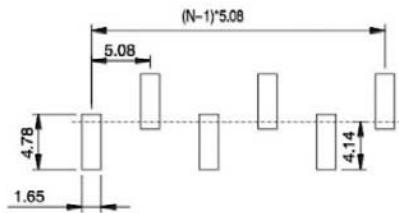
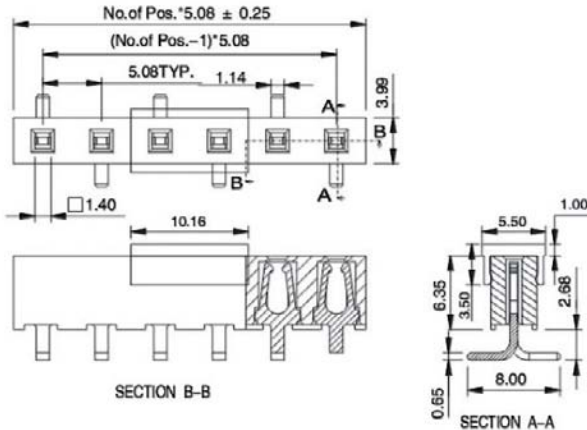


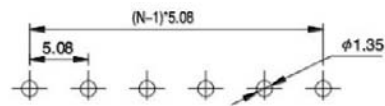
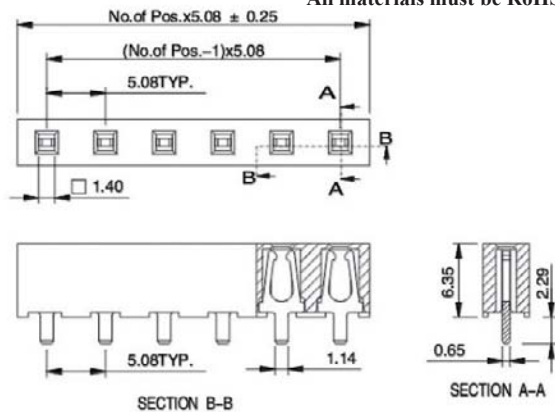
## 5.08MM(0.200") FEMALE HEADER SINGLE ROW DIP TYPE & SMT TYPE (1)

### 508FM-xxxxB-x



Recommended P.C.Board Layout

### 508FA-xxxxB-x



Recommended P.C.Board Layout

### SPECIFICATIONS

Current Rating: 6.8Amp 30°C

Temperature Rise

Contact Resistance: 10mΩ Max

Insulation Resistance: 500MΩ Min.

Withstanding Voltage: AC 500V

Temperature Range: -40°C to +105°C

Max. Processing Temp:

230°C For 30~60 Seconds

260°C For 10 Seconds

### MATERIAL

Insulator: High Temperature

Thermoplastic UL94V-0

Contact: Stamped And Formed,

Phosphor Bronze/BeCu

Plating: Au/Sn Over Nickel

All materials must be RoHS compliant.

### ORDERING INFORMATION:

P/N 508  $\frac{xx}{1}$  -  $\frac{xxxx}{2}$   $\frac{x}{3}$  B -  $\frac{x}{4}$

1. CONNECTOR TYPE:

"FA" DIP TYPE

"FM" SMT TYPE

2. NO. OF CONTACTS:

002 ~ 020

3. CONTACT FINISH:

"G" FULL GOLD PLATED

"S" SELECTIVE GOLD PLATED

"T" FULL TIN PLATED

4. PACKAGE TYPE:

"T" WITHOUT PAD IN TUBE

"P" WITH PAD IN TUBE

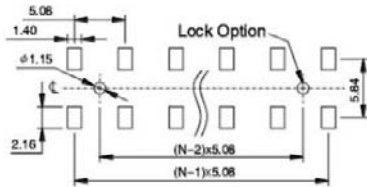
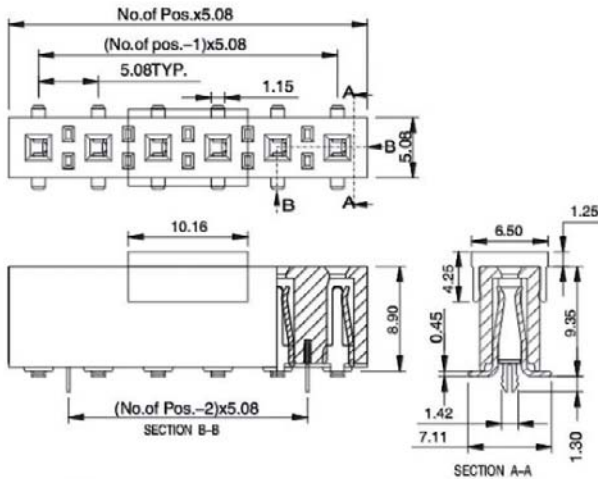
"Q" WITH PAD IN TAPE & REEL

NOTE: PAD= PICK & PLACE PAD

## 5.08MM(0.200") FEMALE HEADER SINGLE ROW DIP TYPE & SMT TYPE (2)

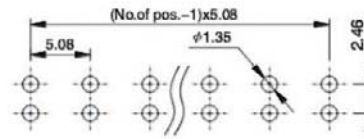
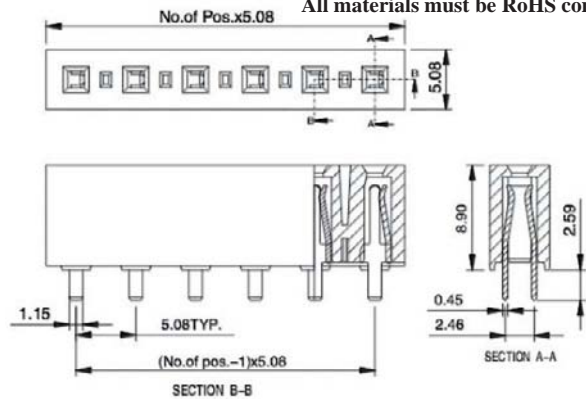
**508FP-xxxxB-x**

**508FQ-xxxxB-x**



Recommended P.C.Board Layout

**508FB-xxxxB-x**



Recommended P.C.Board Layout

### SPECIFICATIONS

**Current Rating:** 8.2Amp 30°C

Temperature Rise

**Contact Resistance:** 10mΩ Max

**Insulation Resistance:** 500MΩ Min.

**Withstanding Voltage:** AC 500V

**Temperature Range:** -40°C to +105°C

**Max. Processing Temp:**

230°C For 30~60 Seconds

260°C For 10 Seconds

### MATERIAL

**Insulator:** High Temperature

Thermoplastic UL94V-0

**Contact:** Stamped And Formed,

Phosphor Bronze/BeCu

**Plating:** Au/Sn Over Nickel

All materials must be RoHS compliant.

### ORDERING INFORMATION:

**P/N 508  $\frac{xx}{1}$  -  $\frac{xxx}{2}$   $\frac{x}{3}$  B -  $\frac{x}{4}$**

#### 1. CONNECTOR TYPE:

"FB" DIP TYPE

"FP" SMT TYPE WITH LOCK

"FQ" SMT TYPE WITHOUT LOCK

#### 2. NO. OF CONTACTS:

002 ~ 020

#### 3. CONTACT FINISH:

"G" FULL GOLD PLATED

"S" SELECTIVE GOLD PLATED

"T" FULL TIN PLATED

#### 4. PACKAGE TYPE:

"T" WITHOUT PAD IN TUBE

"P" WITH PAD IN TUBE

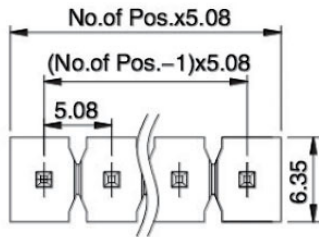
"Q" WITH PAD IN TAPE & REEL

NOTE: PAD= PICK & PLACE PAD

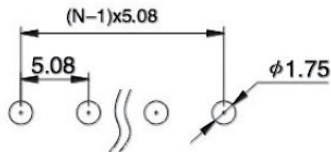
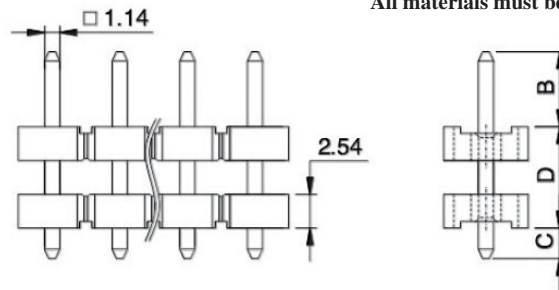
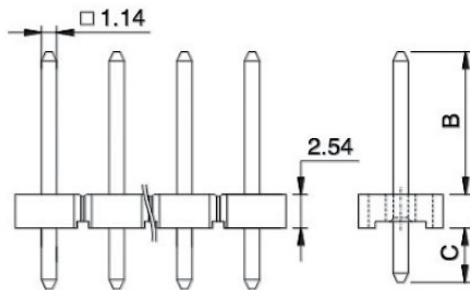
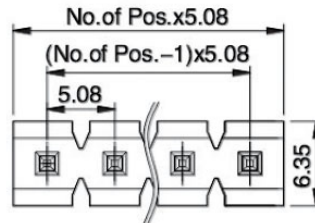
## 5.08MM(0.200") PIN HEADER STRAIGHT DIP TYPE

**508PE-xxxTB-x**

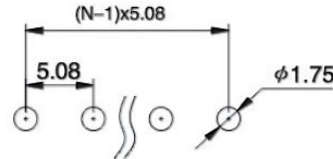
**508PF-xxxTB-x**



**508PQ-xxxTB-x**



Recommended P.C.Board Layout



Recommended P.C.Board Layout

### SPECIFICATIONS

**Current Rating:** 8.2Amp 30°C

Temperature Rise

**Insulation Resistance:** 1000MΩ Min.

**Withstanding Voltage:** AC 500V

**Temperature Range:** -40°C to +105°C

**Max. Processing Temp:**

230°C For 30~60 Seconds

260°C For 10 Seconds

### MATERIAL

**Insulator:** Thermoplastic UL94V-0

**Contact:** Copprt Alloy

**Plating:** Tin Plated Over Nickel

All materials must be RoHS compliant.

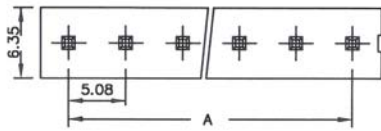
CODE	DIMENSIONS(MM)		
	B	C	D
PE	11.94	4.57	-
PF	13.21	4.57	-
PQ	6.86	2.29	7.62

### ORDERING INFORMATION:

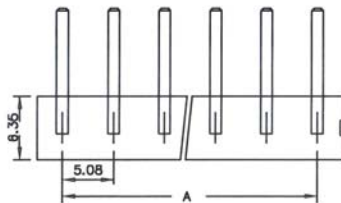
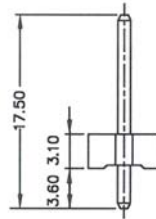
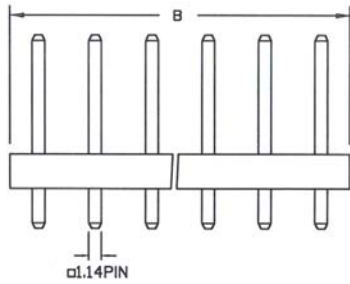
**P/N 508  $\frac{xx}{1}$  -  $\frac{xxx}{2}$   $\frac{T}{3}$  B**

1. TERMINAL TYPE:  
SINGLE BODY TYPE: PE, PF  
DOUBLE BODY TYPE: PQ
2. NO. OF CONTACTS:  
001 ~ 020
3. CONTACT FINISH:  
"T" FULL TIN PLATED

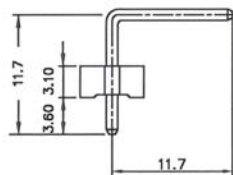
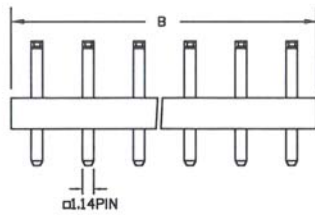
## 5.08MM(0.200") SPACING WIRE-TO-BOARD SYSTEM (A3)



**508PS**



**508PR**



### SPECIFICATIONS

**Current Rating:** 7 A AC, DC

**Voltage Rating:** 250V AC, DC

**Contact Resistance:** 10mΩ Max.

**Insulator Resistance:** 1000MΩ Min.

**Withstand Voltage:** 1500V AC/Min

**Operating Temperature:** -25°C to +85°C

### MATERIALS

**Insulator:** Nylon 66 UL94V-2

**All materials must be RoHS compliant.**



**Recommended P.C.Board Layout  
(Component Side)**

NO. OF CONTACTS	DIMENSIONS(MM)	
	A	B
02	5.08	10.16
03	10.16	15.24
04	15.24	20.32
05	20.32	25.40
06	25.40	30.48
07	30.48	35.56
08	35.56	40.64
09	40.64	45.72
10	45.72	50.80

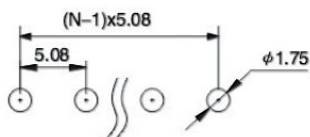
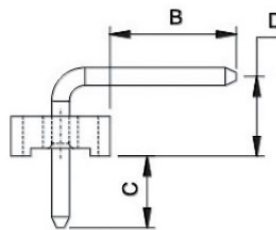
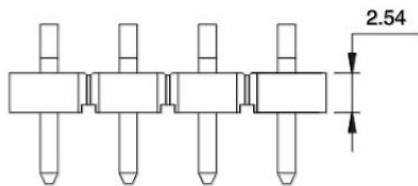
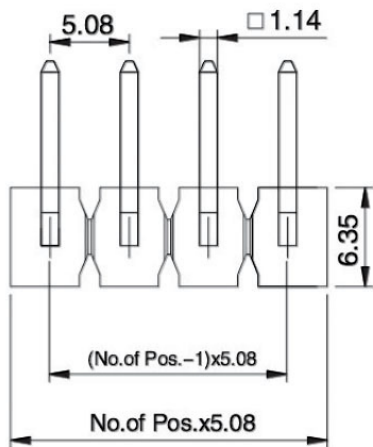
### ORDERING INFORMATION:

**P/N 508  $\frac{XX}{1}$  -  $\frac{XXX}{2}$   $\frac{T}{3}$  W**

1. TERMINAL TYPE:  
"PS" STRAIGHT TYPE  
"PR" RIGHT ANGLE TYPE
2. NO. OF CONTACTS:  
002~010
3. CONTACT FINISH:  
"T" FULL TIN PLATED

NOTE: MATES WITH 508HA & 508HB HOUSINGS

## 5.08MM(0.200") PIN HEADER SINGLE ROW RIGHT ANGLE DIP TYPE



Recommended P.C.Board Layout

### SPECIFICATIONS

**Current Rating:** 8.2Amp 30°C

Temperature Rise

**Insulation Resistance:** 1000MΩ Min.

**Withstanding Voltage:** AC 500V

**Temperature Range:** -40°C to +105°C

**Max. Processing Temp:**

230°C For 30~60 Seconds

260°C For 10 Seconds

### MATERIAL

**Insulator:** Thermoplastic UL94V-0

**Contact:** Copprt Alloy

**Plating:** Tin Plated Over Nickel

All materials must be RoHS compliant.

### ORDERING INFORMATION:

P/N 508  $\frac{1}{XX}$  -  $\frac{2}{XXX}$   $\frac{3}{TB}$

1. TERMINAL TYPE:

"PL" B/C/D = 8.08/4.57/7.62MM

"PM" B/C/D = 13.82/3.96/7.62MM

2. NO. OF CONTACTS:

001 ~ 020

3. CONTACT FINISH:

"T" FULL TIN PLATED

## 5.08MM(0.200") PIN HEADER SMT TYPE

### SPECIFICATIONS

Current Rating: 8.2Amp 30°C

Temperature Rise

Insulation Resistance: 1000MΩ Min.

Withstanding Voltage: AC 500V

Temperature Range: -40°C to +105°C

Max. Processing Temp:

230°C For 30~60 Seconds

260°C For 10 Seconds

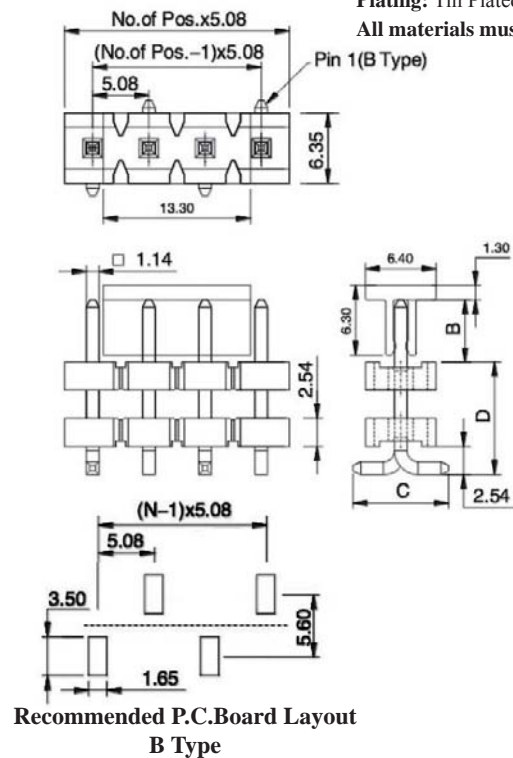
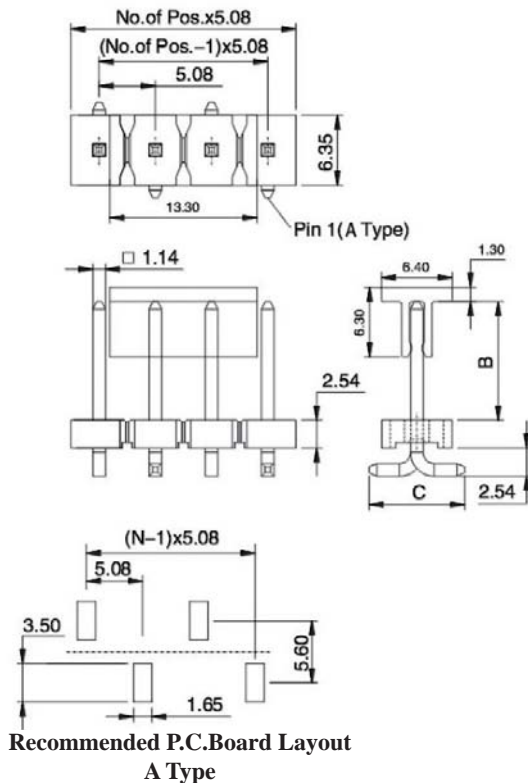
### MATERIAL

Insulator: Thermoplastic UL94V-0

Contact: Copprt Alloy

Plating: Tin Plated Over Nickel

All materials must be RoHS compliant.



TYPE A	TYPE B	DIMENSIONS(MM)		
		B	C	D
SE	SF	10.72	8.64	-
SG	SH	12.24	8.38	-
SM	SN	5.64	8.64	10.16

### ORDERING INFORMATION:

P/N 508  $\frac{1}{x}$  -  $\frac{2}{x}$   $\frac{3}{T}$  B -  $\frac{4}{x}$

1. TERMINAL TYPE:  
SINGLE BODY TYPE: SE, SF, SG, SH  
DOUBLE BODY TYPE: SM, SN
2. NO. OF CONTACTS:  
001 ~ 020
3. CONTACT FINISH:  
"T" FULL TIN PLATED
4. PACKAGE TYPE:  
"T" WITHOUT PAD IN TUBE  
"P" WITH PAD IN TUBE  
"Q" WITH PAD IN TAPE & REEL

NOTE: PAD= PICK & PLACE PAD