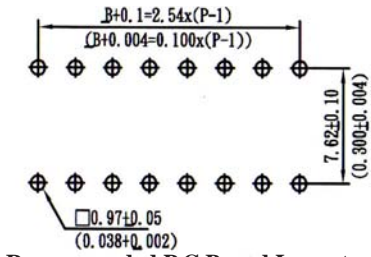
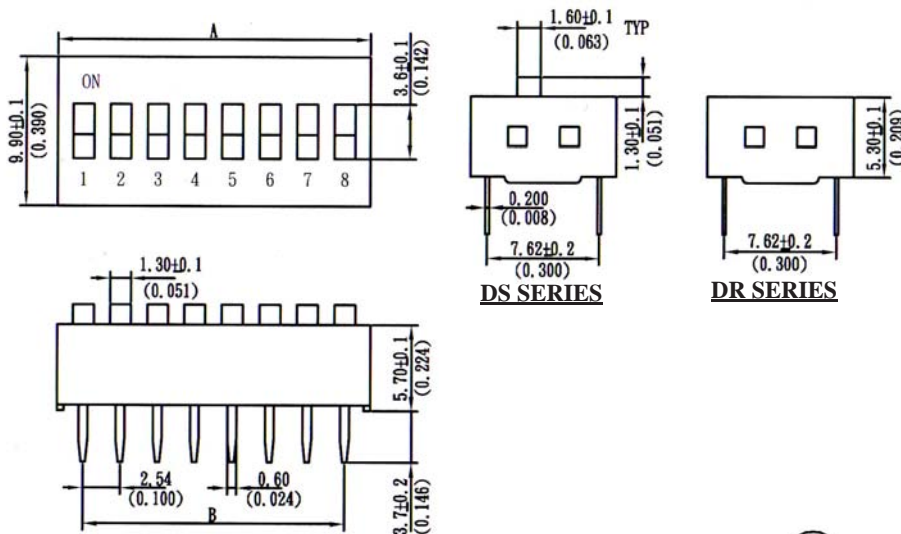
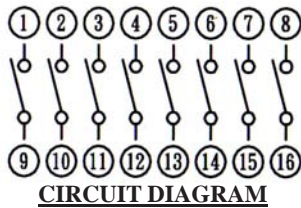


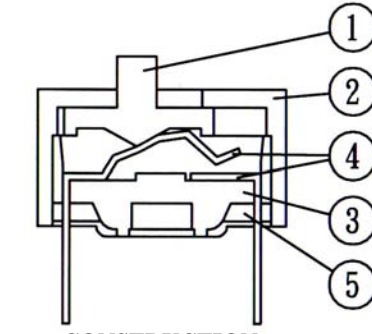
2.54MM(0.100") DIP SWITCH SLIDE TYPE



Recommended P.C.Board Layout



CIRCUIT DIAGRAM



CONSTRUCTION

SPECIFICATIONS

Dielectric Withstanding: 500V AC
 Insulation Resistance: 100MΩ Min
 Contact Resistance: (a)50mΩ Max. at initial
 (b)100mΩ Max. after life test.
 Operating Temperature: -25°C to +70°C
 Storage Temperature: -40°C to +85°C

MATERIALS

Insulation Material: P.B.T, UL94V-0
 Contact Material: Phosphor Bronze
 All materials must be RoHS compliant.

No. of Contacts	Dimensions(mm/inch)	
	A	B
01	3.84(0.151)	---
02	6.08(0.239)	2.54(0.100)
03	8.92(0.351)	5.08(0.200)
04	11.16(0.439)	7.62(0.300)
05	13.70(0.539)	10.16(0.400)
06	16.24(0.639)	12.70(0.500)
07	19.08(0.751)	15.24(0.600)
08	21.32(0.839)	17.78(0.700)
09	24.16(0.951)	20.32(0.800)
10	26.40(1.039)	22.86(0.900)
12	31.48(1.239)	27.94(1.100)

ITEM	DES	MATERIALS	TREATMENT
1	ACTUATOR	UL94V-0 PBT THERMOPLASTIC	WHITE
2	COVER	UL94V-0 PBT THERMOPLASTIC	BLUE, RED, BLACK
3	BASE	UL94V-0 PBT THERMOPLASTIC	BLACK
4	TERMINAL	PHOSPHOR BRONZE	GOLD PLATING
5	POTTING	EXPOXY	BLACK

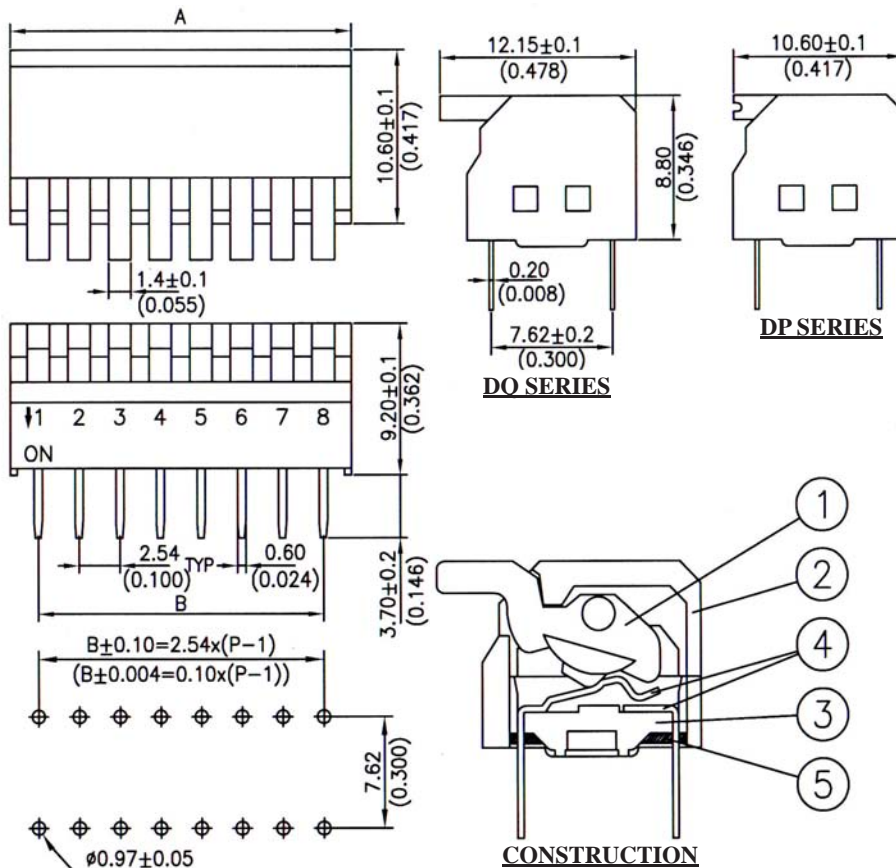
ORDERING INFORMATION:

P/N 2 5 4 $\frac{x}{1}$ - $\frac{xx}{2}$ G $\frac{x}{3}$ - $\frac{x}{4}$

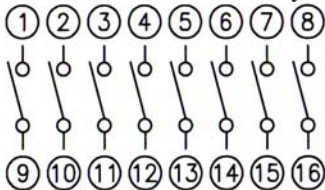
- ACTUATOR TYPE:
 "DS" RAISED ACTUATOR
 "DR" RECESSED ACTUATOR
- NO. OF CONTACTS:
 001 ~ 012
- COLOR OF COVER:
 "R" RED
 "B" BLACK
 "U" BLUE
- SEAL TAPE OPTION:
 " " REGULAR
 "S" TOP TAPE SEALED

NOTE: ALL DIP SWITCHES ARE SUPPLIED IN STANDARD IC TUBES WITH ALL POLES IN "OFF" POSITION.

2.54MM(0.100") DIP SWITCH PIANO TYPE



Recommended P.C.Board Layout



CIRCUIT DIAGRAM

SPECIFICATIONS

Dielectric Withstanding: 500V AC
Insulation Resistance: 100MΩ Min
Contact Resistance: (a)50mΩ Max. at initial
 (b)100mΩ Max. after life test.
Operating Temperature: -25°C to +70°C
Storage Temperature: -40°C to +85°C

MATERIALS

Insulation Material: P.B.T, UL94V-0
Contact Material: Phosphor Bronze
All materials must be RoHS compliant.

No. of Contacts	Dimensions(mm/inch)	
	A	B
02	6.26(0.246)	2.54(0.100)
03	9.06(0.357)	5.08(0.200)
04	11.34(0.446)	7.62(0.300)
05	13.88(0.546)	10.16(0.400)
06	16.42(0.646)	12.70(0.500)
08	21.50(0.846)	17.78(0.700)
10	26.58(1.046)	22.86(0.900)
12	31.60(1.244)	27.94(1.100)

ITEM	DES	MATERIALS	TREATMENT
1	ACTUATOR	UL94V-0 PBT THERMOPLASTIC	WHITE
2	COVER	UL94V-0 PBT THERMOPLASTIC	BLUE, RED, BLACK
3	BASE	UL94V-0 PBT THERMOPLASTIC	BLACK
4	TERMINAL	PHOSPHOR BRONZE	GOLD PLATING
5	POTTING	EXPOXY	BLACK

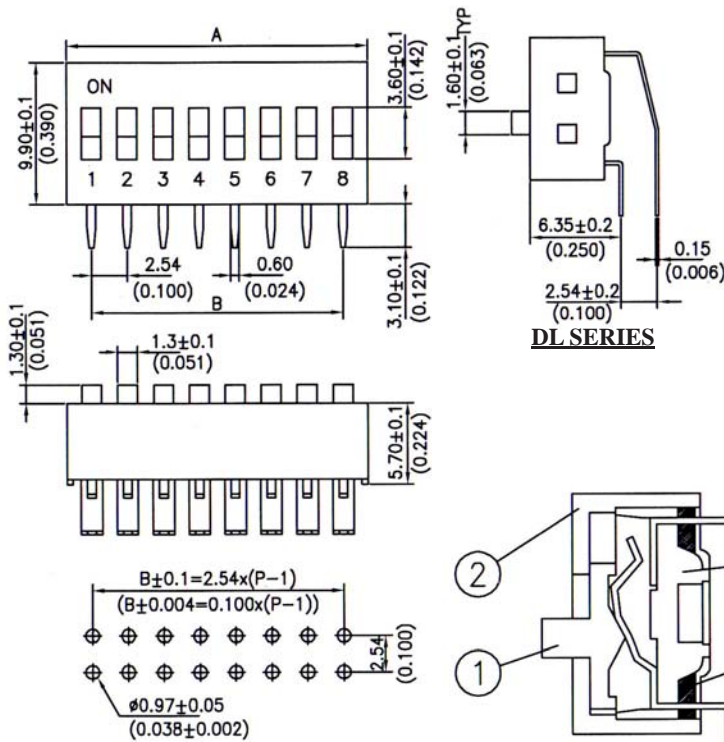
ORDERING INFORMATION:

P/N 2 5 4 $\frac{x}{1}$ - $\frac{xxx}{2}$ G $\frac{x}{3}$ - $\frac{x}{4}$

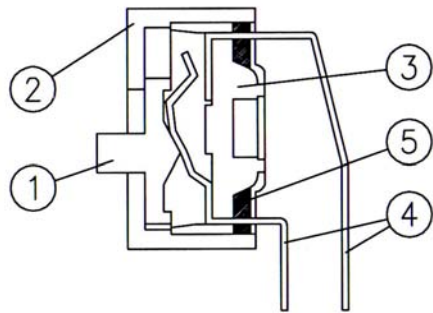
- ACTUATOR TYPE:
 "DP" SHORT KEY
 "DQ" LONG KEY
- NO. OF CONTACTS:
 002 ~ 012
- COLOR OF COVER:
 "R" RED
 "B" BLACK
 "U" BLUE
- SEAL TAPE OPTION:
 " " REGULAR
 "S" TOP TAPE SEALED

NOTE: ALL DIP SWITCHES ARE SUPPLIED IN STANDARD IC TUBES WITH ALL POLES IN "OFF" POSITION.

2.54MM(0.100") DIP SWITCH RIGHT ANGLE TYPE

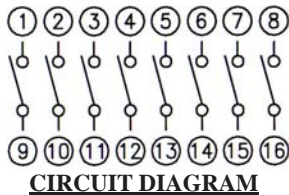


DL SERIES



CONSTRUCTION

Recommended P.C.Board Layout



CIRCUIT DIAGRAM

SPECIFICATIONS

Dielectric Withstanding: 500V AC
Insulation Resistance: 100MΩ Min
Contact Resistance: (a)50mΩ Max. at initial
 (b)100mΩ Max. after life test.
Operating Temperature: -25°C to +70°C
Storage Temperature: -40°C to +85°C

MATERIALS

Insulation Material: P.B.T, UL94V-0
Contact Material: Phosphor Bronze
All materials must be RoHS compliant.

No. of Contacts	Dimensions(mm/inch)	
	A	B
01	3.84(0.151)	---
02	6.08(0.239)	2.54(0.100)
03	8.92(0.351)	5.08(0.200)
04	11.16(0.439)	7.62(0.300)
05	13.70(0.539)	10.16(0.400)
06	16.24(0.639)	12.70(0.500)
07	19.08(0.751)	15.24(0.600)
08	21.32(0.839)	17.78(0.700)
09	24.16(0.951)	20.32(0.800)
10	26.40(1.039)	22.86(0.900)
12	31.48(1.239)	27.94(1.100)

ITEM	DES	MATERIALS	TREATMENT
1	ACTUATOR	UL94V-0 PBT THERMOPLASTIC	WHITE
2	COVER	UL94V-0 PBT THERMOPLASTIC	BLUE, RED, BLACK
3	BASE	UL94V-0 PBT THERMOPLASTIC	BLACK
4	TERMINAL	PHOSPHOR BRONZE	GOLD PLATING
5	POTTING	EXPOXY	BLACK

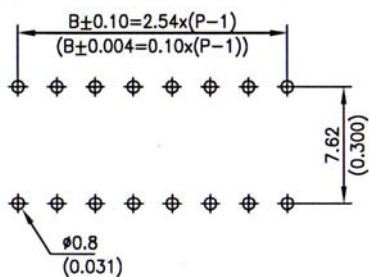
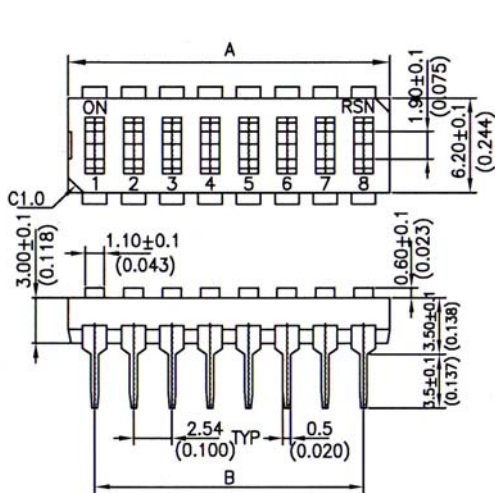
ORDERING INFORMATION:

P/N 2 5 4 $\frac{DL}{1}$ - $\frac{xxx}{2}$ G $\frac{x}{3}$ - $\frac{x}{4}$

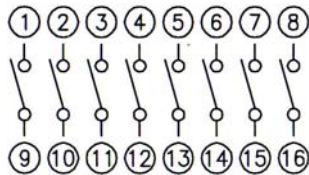
- ACTUATOR TYPE:
"DL" RASIED ACTUATOR
- NO. OF CONTACTS:
001 ~ 012
- COLOR OF COVER:
"R" RED
"B" BLACK
"U" BLUE
- SEAL TAPE OPTION:
" " REGULAR
"S" TOP TAPE SEALED

NOTE: ALL DIP SWITCHES ARE SUPPLIED IN STANDARD IC TUBES WITH ALL POLES IN "OFF" POSITION.

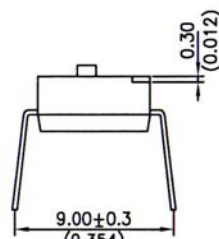
2.54MM(0.100") DIP SWITCH MACHINE INSERTABLE TYPE



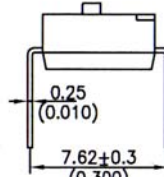
Recommended P.C. Board Layout



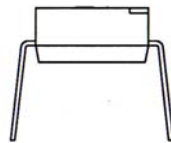
CIRCUIT DIAGRAM



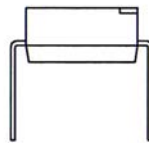
DH SERIES



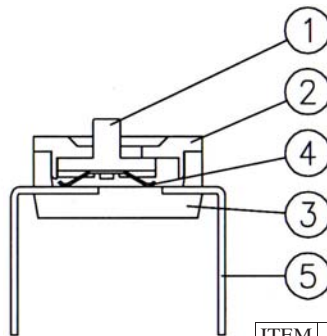
DJ SERIES



DK SERIES



DT SERIES



CONSTRUCTION

SPECIFICATIONS

Dielectric Withstanding: 500V AC
 Insulation Resistance: 100MΩ Min
 Contact Resistance: (a)50mΩ Max. at initial
 (b)100mΩ Max. after life test.
 Operating Temperature: -25°C to +70°C
 Storage Temperature: -40°C to +85°C

MATERIALS

Insulation Material: Nylon-6T, UL94V-0
 Contact Material: Phosphor Bronze
 All materials must be RoHS compliant.

No. of Contacts	Dimensions(mm/inch)	
	A	B
01	3.48(0.137)	---
02	6.02(0.237)	2.54(0.100)
03	8.56(0.337)	5.08(0.200)
04	11.10(0.437)	7.62(0.300)
05	13.64(0.537)	10.16(0.400)
06	16.18(0.637)	12.70(0.500)
07	18.72(0.737)	15.24(0.600)
08	21.26(0.837)	17.78(0.700)
09	23.80(0.937)	20.32(0.800)
10	26.34(1.037)	22.86(0.900)
12	31.42(1.237)	27.94(1.100)

ITEM	DES	MATERIALS	TREATMENT
1	ACTUATOR	UL94V-0 NYLON	MOLDED WHITE
2	COVER	UL94V-0 NYLON	MOLDED BLACK
3	BASE	UL94V-0 NYLON	MOLDED BLACK
4	CONTACT	BERYLLIUM COPPER	GOLD PLATED AT CONTACT AREA
5	TERMINAL	BRASS	GOLD PLATING

ORDERING INFORMATION:

P/N 2 5 4 $\frac{x}{1} x$ - $\frac{x}{2} x x$ G B - $\frac{x}{3}$

1. ACTUATOR TYPE & TERMINAL TYPE:

- "DH" RAISED ACTUATOR AND SPLAY TERMINAL (S)
- "DJ" RAISED ACTUATOR AND STRAIGHT TERMINAL (H)
- "DK" RECESSED ACTUATOR AND SPLAY TERMINAL (S)
- "DT" RECESSED ACTUATOR AND STRAIGHT TERMINAL (H)

2. NO. OF CONTACTS:

001 ~ 012

3. SEAL TAPE OPTION:

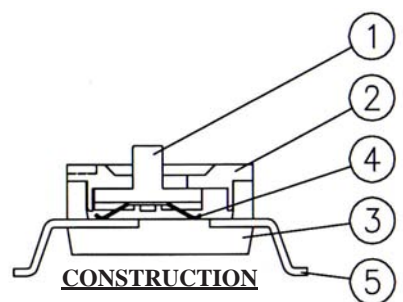
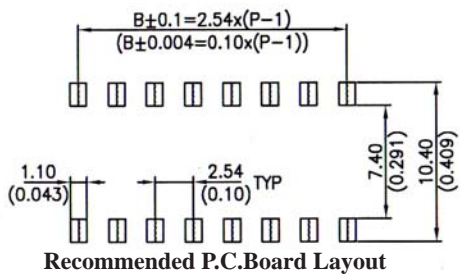
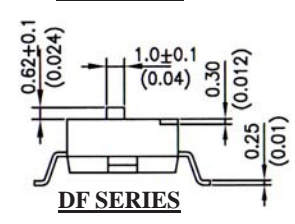
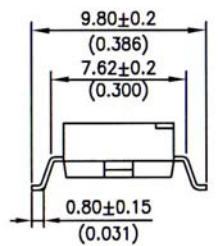
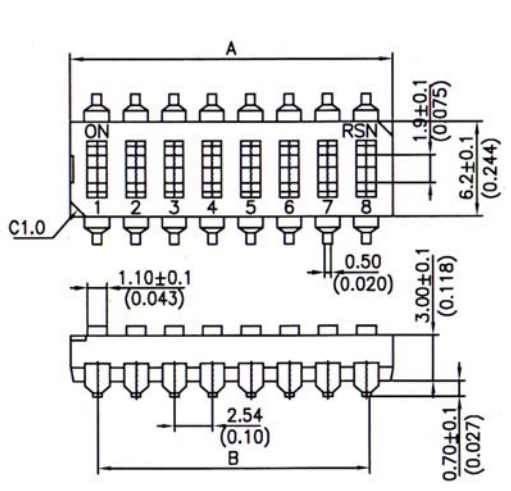
- " " REGULAR
- "S" TOP TAPE SEALED

NOTE: ALL DIP SWITCHES ARE SUPPLIED IN STANDARD IC TUBES WITH ALL POLES IN "OFF" POSITION.

NOTE: 254DH & 254DK FOR ACTOMATIC ASSEMBLY

254DJ & 254DT FOR MANUAL ASSEMBLY

2.54MM(0.100") DIP SWITCH SMT TYPE



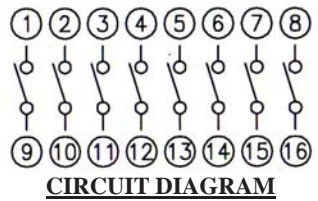
SPECIFICATIONS

Dielectric Withstanding: 500V AC
Insulation Resistance: 100MΩ Min
Contact Resistance: (a)50mΩ Max. at initial
 (b)100mΩ Max. after life test.
Operating Temperature: -25°C to +70°C
Storage Temperature: -40°C to +85°C

MATERIALS

Insulation Material: Nylon-6T, UL94V-0
Contact Material: Phosphor Bronze
All materials must be RoHS compliant.

No. of Contacts	Dimensions(mm/inch)	
	A	B
01	3.48(0.137)	---
02	6.02(0.237)	2.54(0.100)
03	8.56(0.337)	5.08(0.200)
04	11.10(0.437)	7.62(0.300)
05	13.64(0.537)	10.16(0.400)
06	16.18(0.637)	12.70(0.500)
07	18.72(0.737)	15.24(0.600)
08	21.26(0.837)	17.78(0.700)
09	23.80(0.937)	20.32(0.800)
10	26.34(1.037)	22.86(0.900)
12	31.42(1.237)	27.94(1.100)



ITEM	DES	MATERIALS	TREATMENT
1	ACTUATOR	UL94V-0 NYLON	MOLDED WHITE
2	COVER	UL94V-0 NYLON	MOLDED BLACK
3	BASE	UL94V-0 NYLON	MOLDED BLACK
4	CONTACT	BERYLLIUM COPPER	GOLD PLATED AT CONTACT AREA
5	TERMINAL	BRASS	GOLD PLATING

ORDERING INFORMATION:

P/N 2 5 4 $\frac{x}{1} x - \frac{x}{2} x x$ G B - $\frac{x}{3}$

- ACTUATOR TYPE & PACKAGE STYLE:
 "DF" RAISED ACTUATOR
 "DG" RECESSED ACTUATOR
- NO. OF CONTACTS:
 001 ~ 012
- PACKAGE OPTION:
 "T" TUBE
 "R" TAPE & REEL