

SLIDE SWITCHES STRAIGHT DIP TYPES (53)

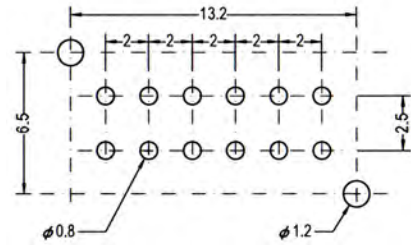
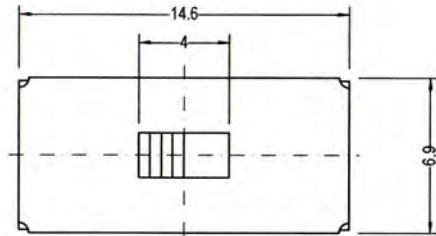


SPECIFICATIONS

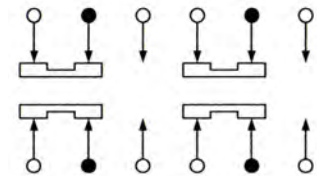
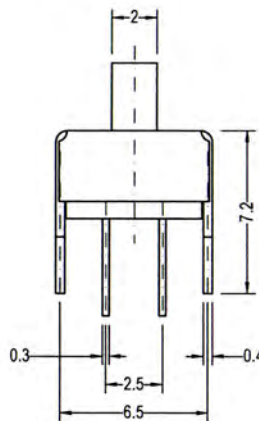
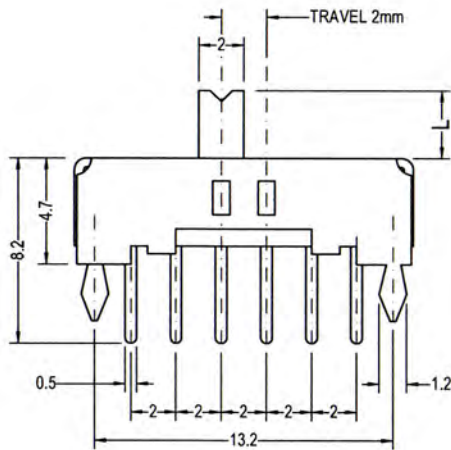
Circuit: ON-ON (4P2T)
Rating: D.C. 50V 0.3A
Contact R.[max]: D.C. 5V 1A 30mΩ
Insulation R.[min]: D.C. 500V 100MΩ
Withstand VOL.: A.C. 500V 1minute
Timing: Non-Shorting
Operating force: 300 ± 100g
Life cycle[max]: 10,000 CYCLES
All materials must be RoHS compliant.

MATERIALS

Cover: 0.25mm SUS, Washing
Knob: Nylon, Black
Case: Brass Strip/Nylon 9T + F.G., Black/Ag Plated
Contact: PBS C5210R-EH, Ag Clad
Unit: mm



Recommended P.C.Board Layout



Schematic

KNOB TYPE	
V	G

ORDERING INFORMATION:

P/N S W S 1 V - $\frac{x P x T}{1} \frac{x x x}{2 3}$

1. SWITCHING ACTION:
"4P2T" ON-ON
2. KNOB TYPE:
"G" TYPE G
"V" TYPE V
3. KNOB LENGTH (L IN MM):
02~15

SLIDE SWITCHES STRAIGHT DIP TYPES (54)

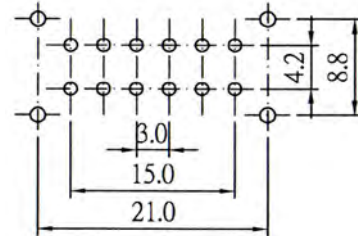
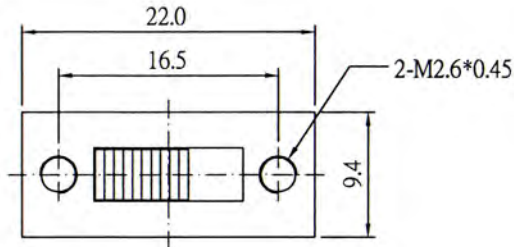


SPECIFICATIONS

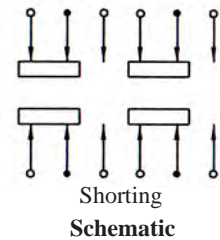
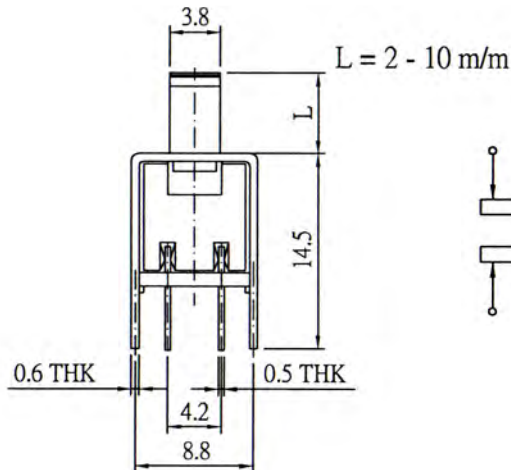
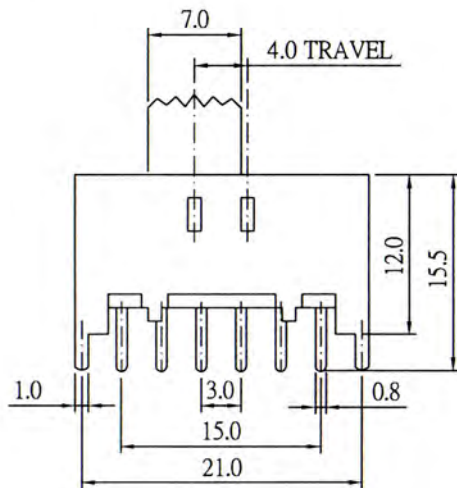
Circuit: ON-ON (4P2T)
Rating: D.C. 50V 0.3A
Contact R.[max]: D.C. 5V 1A 30mΩ
Insulation R.[min]: D.C. 500V 100MΩ
Withstand VOL.: A.C. 500V 1minute
Operating force: 300 ± 100gf
Life cycle[max]: 10,000 CYCLES
All materials must be RoHS compliant.

MATERIALS

Cover: 0.25mm SUS, Washing
Knob: Nylon, Black
Case: Brass Strip/Nylon 9T + F.G., Black/Ag Plated
Contact: PBS C5210R-EH, Ag Clad
Unit: mm



Recommended P.C.Board Layout

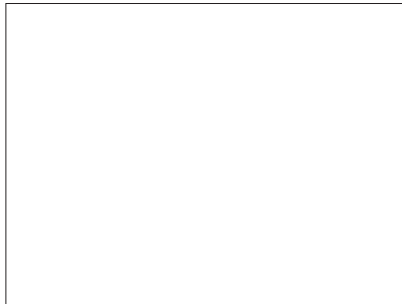


ORDERING INFORMATION:

P/N S W S 1 W - $\frac{x P x T G x x}{1 \quad 2 \quad 3}$

1. SWITCHING ACTION:
"4P2T" ON-ON
2. KNOB TYPE:
"G" TYPE G
3. KNOB LENGTH (L IN MM):
02~15

SLIDE SWITCHES STRAIGHT DIP TYPES (55)



SPECIFICATIONS

Circuit: ON-ON-ON (4P3T)

Rating: D.C. 50V 0.3A

Contact R.[max]: D.C. 5V 1A 30mΩ

Insulation R.[min]: D.C. 500V 100MΩ

Withstand VOL.: A.C. 500V 1minute

Timing: Shorting

Operating force: 300 ± 100g

Life cycle[max]: 10,000 CYCLES

All materials must be RoHS compliant.

MATERIALS

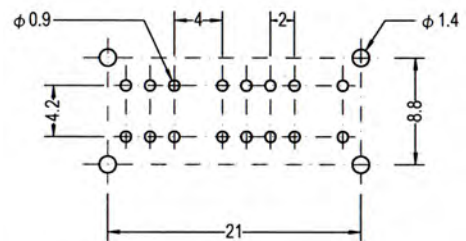
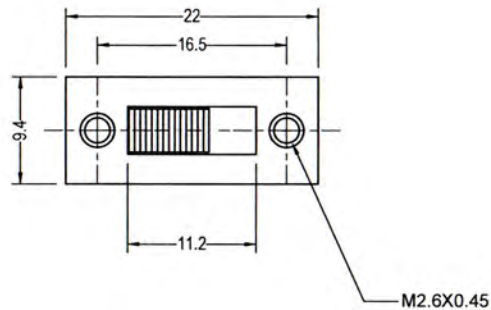
Cover: 0.25mm SUS, Washing

Knob: Nylon, Black

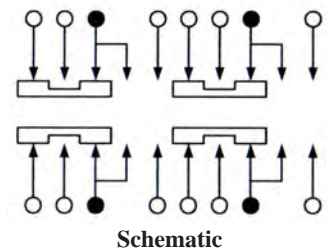
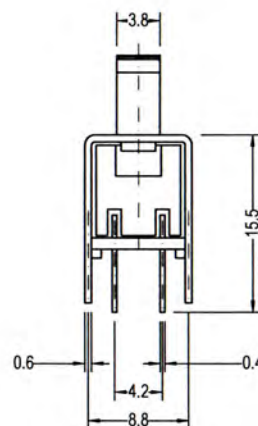
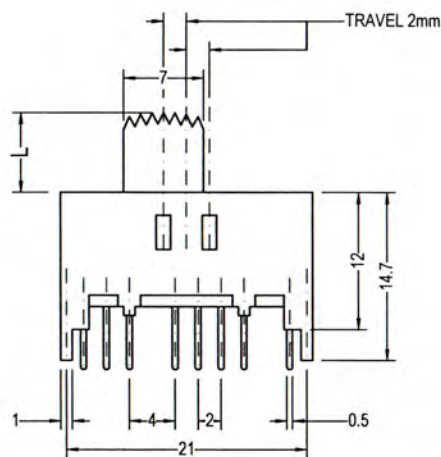
Case: Brass Strip/Nylon 9T + F.G., Black/Ag Plated

Contact: PBS C5210R-EH, Ag Clad

Unit: mm



Recommended P.C.Board Layout



Schematic

ORDERING INFORMATION:

P/N S W S 3 U - $\frac{x}{1} P \frac{x}{2} T \frac{G}{3} \frac{x}{x}$

1. SWITCHING ACTION:

"4P3T" ON-ON-ON

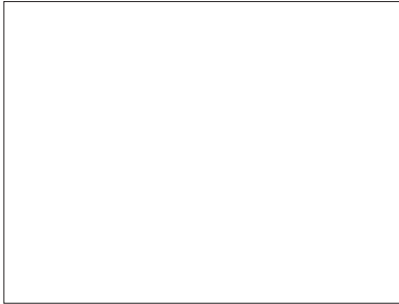
2. KNOB TYPE:

"G" TYPE G

3. KNOB LENGTH (L IN MM):

02~15

SLIDE SWITCHES STRAIGHT DIP TYPES (56)

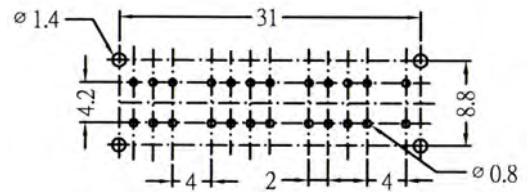
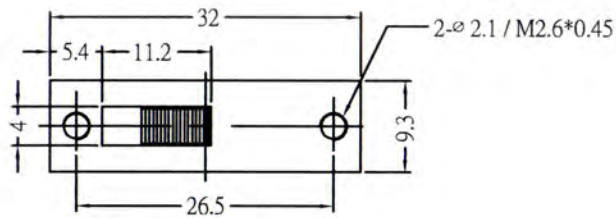


SPECIFICATIONS

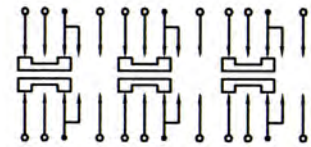
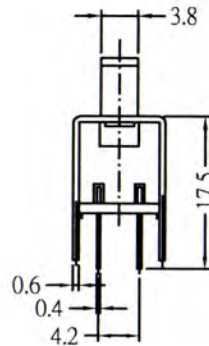
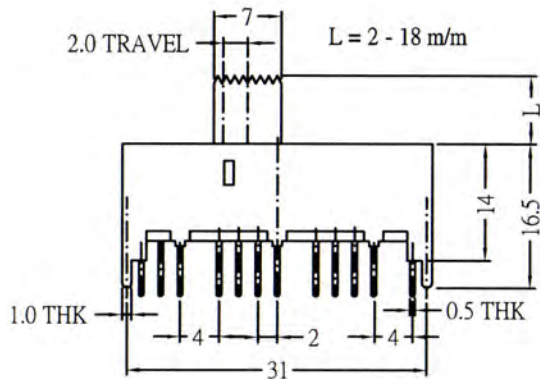
Circuit: ON-ON-ON (6P3T)
Rating: D.C. 50V 0.3A
Contact R.[max]: D.C. 5V 1A 30mΩ
Insulation R.[min]: D.C. 500V 100MΩ
Withstand VOL.: A.C. 500V 1minute
Operating force: 300 ± 100g
Life cycle[max]: 10,000 CYCLES
All materials must be RoHS compliant.

MATERIALS

Knob: POM, Black
Frame: IRPN Strip, Ni Plated
Board: Phenolic Resin
Terminal: Brass Strip, Ni Plated
Contact: PBS, Ag Plated
Spring: Steel Wire
Unit: mm



Recommended P.C.Board Layout



Shorting Schematic

ORDERING INFORMATION:

P/N S W S 1 Y - $\frac{x P x T G}{1 \quad 2 \quad 3} x x$

1. SWITCHING ACTION:
"6P3T" ON-ON-ON
2. KNOB TYPE:
"G" TYPE G
3. KNOB LENGTH (L IN MM):
02~15

SLIDE SWITCHES STRAIGHT DIP TYPES (57)

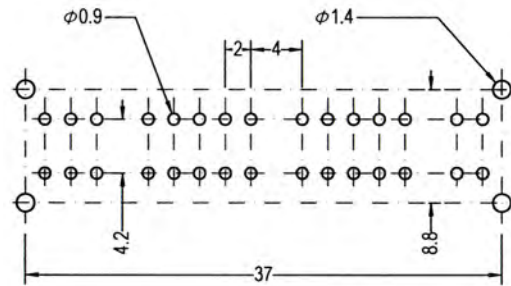
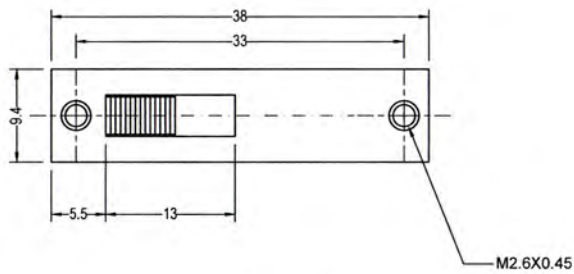


SPECIFICATIONS

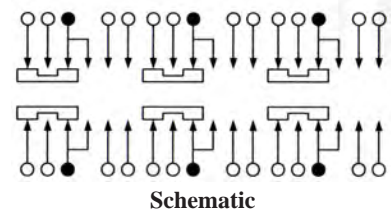
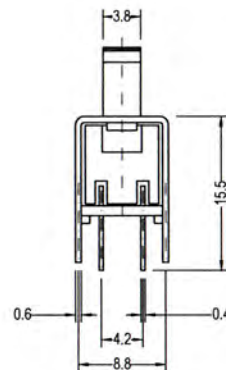
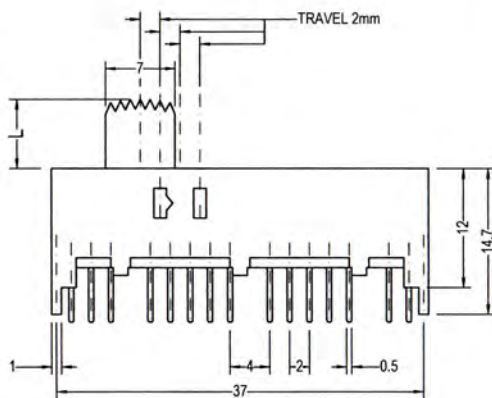
Circuit: ON-ON-ON-ON (6P4T)
Rating: D.C. 50V 0.3A
Contact R.[max]: D.C. 5V 1A 30mΩ
Insulation R.[min]: D.C. 500V 100MΩ
Withstand VOL.: A.C. 500V 1minute
Timing: Shorting
Operating force: 300 ± 100g
Life cycle[max]: 10,000 CYCLES
All materials must be RoHS compliant.

MATERIALS

Cover: 0.25mm SUS, Washing
Knob: Nylon, Black
Case: Brass Strip/Nylon 9T + F.G., Black/Ag Plated
Contact: PBS C5210R-EH, Ag Clad
Unit: mm



Recommended P.C.Board Layout



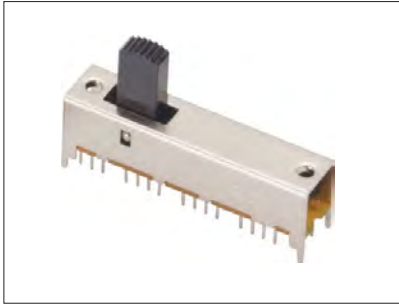
Schematic

ORDERING INFORMATION:

P/N S W S 3 V - $\frac{x}{1} P \frac{x}{2} T \frac{G}{3} x x$

1. SWITCHING ACTION:
"6P4T" ON-ON-ON-ON
2. KNOB TYPE:
"G" TYPE G
3. KNOB LENGTH (L IN MM):
02~15

SLIDE SWITCHES STRAIGHT DIP TYPES (59)

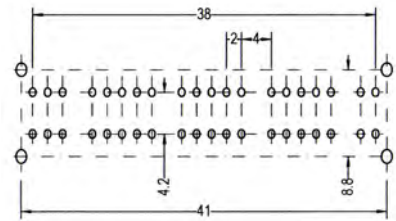
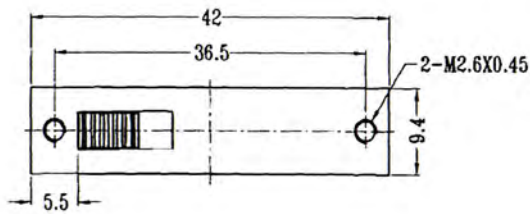


SPECIFICATIONS

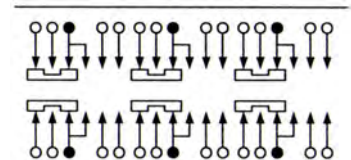
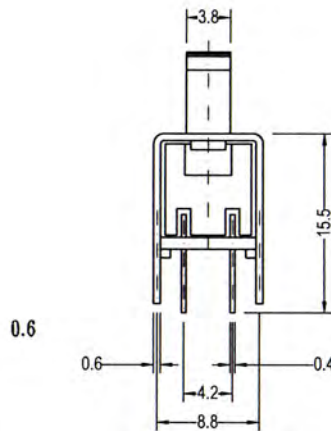
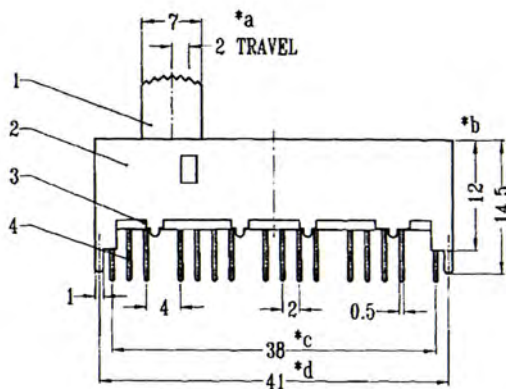
Circuit: ON-ON-ON (8P3T)
Rating: D.C. 50V 0.3A
Contact R.[max]: D.C. 5V 1A 30mΩ
Insulation R.[min]: D.C. 500V 100MΩ
Withstand VOL.: A.C. 500V 1minute
Timing: Shorting
Operating force: 300 ± 100g
Life cycle[max]: 10,000 CYCLES
All materials must be RoHS compliant.

MATERIALS

Knob: POM, Black
Frame: Steel Strip, Ni Plated or Zn Plated
Terminal Base: Phenolic Resin
Terminal: Brass Strip, Ag Plated Over Ni Plated
Contact: PBS Strip, Ag Plated
Spring: Steel Wire, Tempered
Unit: mm



Recommended P.C.Board Layout



Schematic

ORDERING INFORMATION:

P/N S W S 3 Y - $\frac{x}{1} P \frac{x}{2} T \frac{G}{3} \frac{x}{x}$

1. SWITCHING ACTION:
"8P3T" ON-ON-ON
2. KNOB TYPE:
"G" TYPE G
3. KNOB LENGTH (L IN MM):
02~15