



过流保护
OVER CURRENT PROTECTION

更好的电路安全卫士！

You build electronics , We safeguard them !

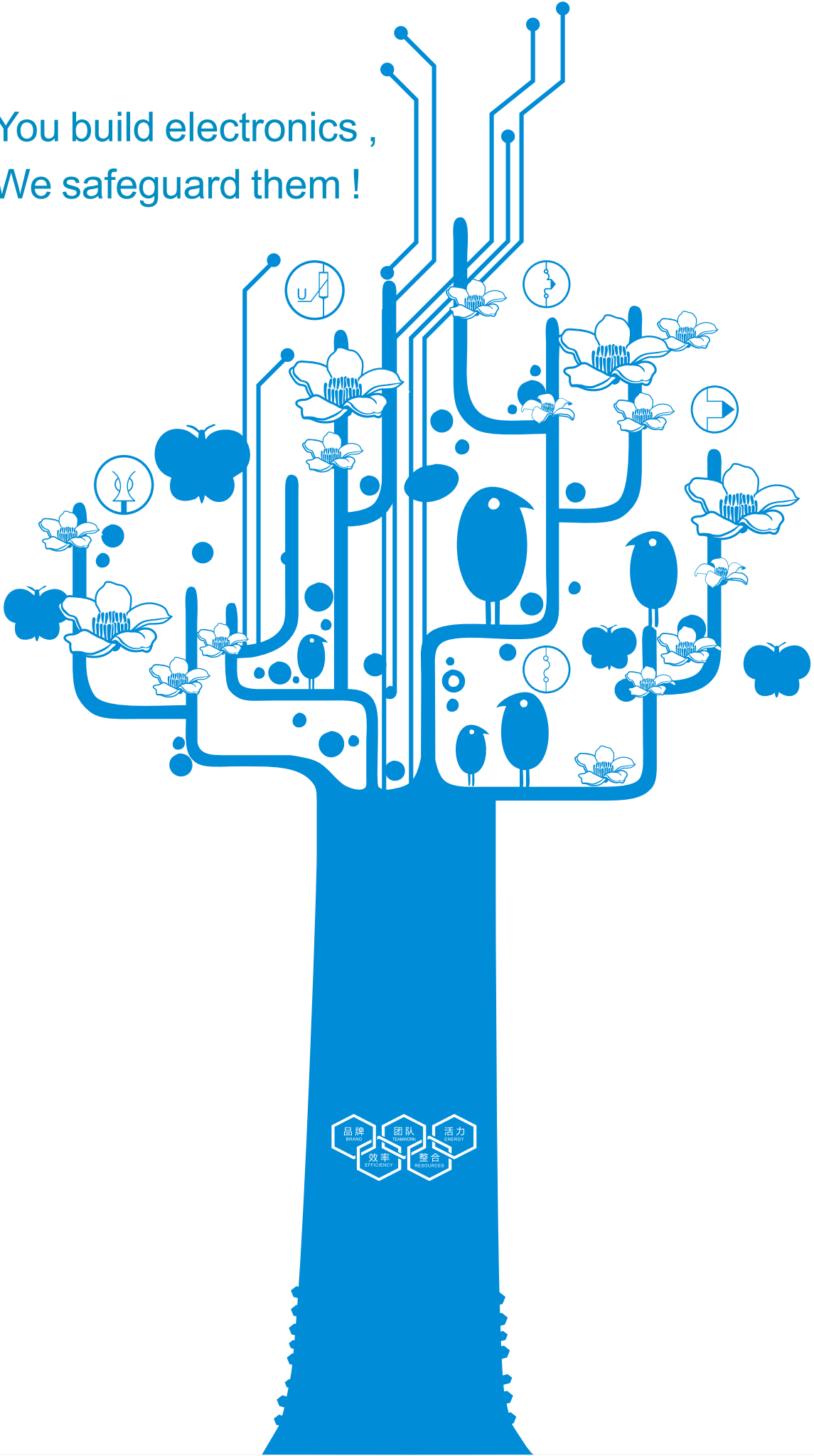
2021

Product Portfolio



贝特卫士®
www.betterfuse.com

You build electronics ,
We safeguard them !



目录

Contents



公司简介
Our Company

02

公司发展历程
Company History

03



OC (Over-Current) Protection

SMD Fuse Series

04-05

Brick Fuse Series

06-08

Plastic Square Fuse Series

09

Cartridge Fuse 2x7/3.6x10 Series

10-11

Cartridge Fuse 5x20 Series

12-13

Cartridge Fuse 6x30 Series

14-15

Cartridge Fuse 6x25 Series

16

Melting Wire Fuse/Cartridge Fuse 6x40 Series

17

Blade Fuse Series

18

SMD/DIP PPTC Series

19-22



Accessories Terminal

Fuse Holders

24-25

Fuse Clips

26

Terminals

27



董事长寄语
CEO Address

28



公司简介

OUR COMPANY



Incorporated in 2003 on the foundations of the German WICKMANN' S factory in Dongguan, Better Group established and secured its leader position on fuse industry as a manufacturer for total circuit protection components and brand operators in China.

Our product portfolio consists of fuses and components for over-current, over-voltage and over-temperature protection and related accessories, which are approved and certified through major international testing laboratories, such as TUV, VDE, UL, CSA, CCC, PSE, KC and ASTA. Accessed to the certification of ISO9001/ISO14001/ISO080000/IATF16949 quality management. Has won the recognition from domestic and overseas famous enterprises, like Midea, Haier, BYD, ZTE, Samsung, Panasonic, and has established long-term and friendly cooperation relationship.

In the electronics, electricity, new power and industrial circuit protection market, in order to meet different safety requirements and localization service, We has respectively set up multiple overseas offices and agencies In Asia, Europe and America.

For many years, We experienced mergers and acquisitions, recombination and upgrade. It started from a small workshop and has developed till now. Taking the Dongguan Songshanhu Bettel headquarter as the maternal and subordinating 8 branches, Betterfuse is a national high-tech enterprise. Through the targets and principles, like optimizing talents, platform integration, flat management, two-oriented integration, Betterfuse continuously improves core competitiveness of enterprises.

Under the guidance of the company's five core ideas "Brand, Teamwork, Energy, Efficiency, Resources", with solid technical strength, We has implemented related systems, Introduced ERP, OA and other related systems, and prospectively introduced MES, SPC, TPM ect advanced intelligent manufacturing management software. Keep pace with times so that to provide faithful and value-added services for the global clients.

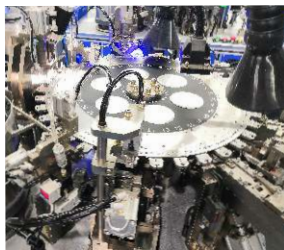
东莞市贝特电子科技股份有限公司于2003年系原德国百年品牌 WICKMANN(东莞)中国团队创办, 公司定位全面电路保护元件和方案供应商, 目前已成为中国区行业领跑品牌。

我们的产品包含过流, 过压, 过温电路保护元件和复合产品以及相关配件, 已经取得TUV、VDE、UL、CSA、CCC、PSE、KC、ASTA等认证。公司已通过ISO9001, ISO14001, ISO080000, IATF16949等体系认证。赢得了美的, 海尔, 比亚迪, 中兴通讯, 三星, 松下等国内外知名企业的认可, 并建立了长期友好合作关系。

在电子、电力、新能源和工业电路保护市场上, 为满足各种不同的安全技术要求和本土化服务, 我们在亚洲、欧洲和美洲分别设立多个海外驻点办事处和代理机构。

多年来, 我们历经了并购、重组、升级。从一个小车间开始, 发展至今, 以贝特卫士东莞松山湖总部为母体下辖8家分子公司的国家高新技术企业, 通过优化人才、平台整合、扁平化管理、两化融合等方针和目标, 不断提升企业核心竞争力。

在“品牌、活力、团队、效率、整合”企业五大核心理念的指引下, 我们以雄厚的技术实力, 导入了ERP, OA等相关系统, 并前瞻性的引入MES, SPC, TPM等先进智能制造管理软件, 与时俱进, 为全球客户提供诚信、增值的服务。





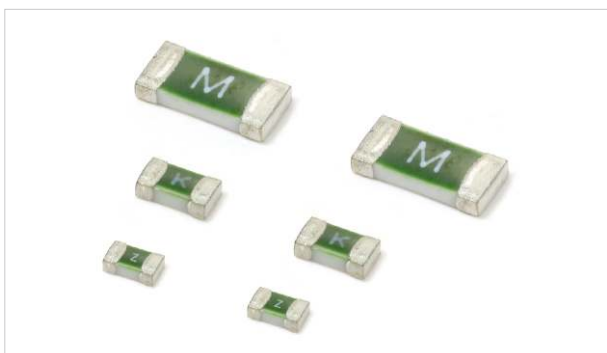
Company History



- 2021** Import OA, SPC system
导入OA、SPC系统
- 2020** The found of Dongguan ADLER Electric Co., Ltd
The found of Dongguan ELB electrical Co., Ltd.
东莞三厂正式成立
东莞市艾乐贝电子有限公司成立
- 2019** Dongguan Betterfuse second branch was officially established
MES & U9 syetem running
The found of Dongguan Advonsoon Automation Co., Ltd. Dongguan Bxway Electronics Co.,Ltd.
东莞贝特卫士第二分公司正式成立
MES和U9系统运行
东莞市艾德迅自动化有限公司, 东莞市贝芯微电子有限公司成立
- 2018** In round C financing, Shenzhen Dachen Chuangye Investment, Shenzhen co-win
venture capital investment limited, China Venture Capital Inc. and other investment
companies invest 30,000,000RMB,
Obtain IATF 16949 system certification
C轮融资达晨、同创伟业、中国风险等投资资金3000万,
取得IATF 16949体系认证
- 2017** In round B financing, Shenzhen hi-tech investment co., ltd and other three
investment company invest 31,000,000RMB,
Joint venture of Xi'An ADLER electric appliance,
The first batch of Pilot enterprise of "Income Doubling Program" in Dongguan,
Establish CPC Better Guardian party branch
B轮融资深圳高新投等四家风投3100万,
合资成立西安艾德乐电器
东莞市首批“倍增计划”试点企业、中共贝特卫士党支部成立
- 2016** Successfully landed the Chinese OTC Market and acquired the qualification of
the intellectual property management system certification
贝特卫士成功登陆新三板, 获得“知识产权管理体系认证”资质
- 2015** Obtained the certification of "Engineering Research Center of Circuit
Protection Components in Guangdong Province"
取得“广东省电路保护元件工程技术研究中心”资格认定
- 2014** Accessed to the certification of ISO 14001 and QC 080000 quality management
system and successfully registered "Betterfuse" brand trademark as "贝特卫士",
which pronounced similar to "Betterfuse"
通过 "ISO 14001" 和 "QC 080000" 质量管理体系认证,
成功注册“贝特卫士”品牌商标
- 2012** Completion of the stock reform, obtain angel investment foudation 10 million
股改完, 引入天使投资汇通盈富1000万
- 2011** Accessed to the qualification of "high-tech enterprise"
获得“高新技术企业”资质
- 2010** Successively merged with Asiafuse (HK) Electronics Limited,
Wholesome Electronics Co.,Ltd., Tronic Electronics Limited.,
Waltron Electronic Co.,Ltd.,
先后并购艾邦电子(香港)公司, 宏立信电子, 创领电子, 华创电子
- 2007** Accessed to "ISO 9001" quality management system certification
获得“ISO 9001”质量管理体系认证
- 2003** August, Betterfuse came into being in the ruins of Wickman's factory,
which was took over by Littlefuse
正式注册“东莞市贝特电子科技有限公司”

企业核心理念
Company's Core Philosophy





关键特性 KEY FEATURES OF THE PRODUCT

- 基质-陶瓷, 两端-银镀镍和锡
Ceramic substrate printing process
- 符合车规AEC-Q200标准要求
AEC-Q200 Automotive Grade Certified
- 工作温度(-55°C~+150°C)
Operating temperature (-55°C~+150°C)
- 符合无铅无卤要求
Lead Free and Halogen free
- 小尺寸, 大电流
Low profile package:high current
- 标准(Standard): UL248-1

参数表 PARAMETER LIST

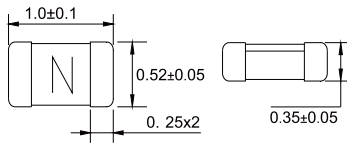
序号 No.	料号 Part No.	尺寸 Size	熔断特性 Fusing Characteristics	额定电压 Rated Voltage	额定电流 Rated Current	分断能力 Breaking Capacity	认证 Certification
							cURus
1	041	0402	F	32VDC	200mA-4A	35A@32VDC	●
2	061	0603	F	32VDC	250mA-1A	50A@32VDC	●
3	063		T	32VDC	1A-5A	50A@32VDC	●
4	064		F	63VDC	250mA-5A	50A@63VDC	●
5	065		F	32VDC	250mA-8A	50A@32VDC	●
6	066		T	32VDC	1A-8A	50A@32VDC	●
7	121		1206	F	63VDC	250mA-3.5A	50A@63VDC
		F		32VDC	4A-7A	50A@32VDC	●
		F		24VDC	10A-20A	300A@24VDC	●
8	122	T		32/63/72VDC	4.5A-7A	50A@32/63/72VDC	●
		T		32/48VDC	8A-20A	150A@32/48VDC	●
		T		32/36VDC	25A-40A	200A@32/36VDC	●
9	123	T		63VDC	1A-4A	50A@63VDC	●
		T		32VDC	4.5A-5A	100A@32VDC	●
10	124	F		125VAC; 125VDC	250mA-1.5A	50A@125VAC; 50A@125VDC	●
11	125	F		32/63/72VDC; 24VDC	250mA-4A	50A@32/63/72VDC; 300A@24VDC	●
				32VDC; 24VDC	4.5A-7A	50A@32VDC; 300A@24VDC	●
				32VDC; 24VDC	8A-40A	150A@32VDC; 300A@24VDC	●
12	126	T		63/72VDC	0.63A-4A	50A@63/72VDC	●
			32VDC, 24VDC	4.5A-7A	50A@32VDC, 300A@24VDC	●	
			32VDC; 24VDC	8A-30A	150A@32VDC; 300A@24VDC	●	
13	127	F	125VAC/DC	250mA-1.5A	50A@125VAC/DC	●	
			125V/DC	2A-3A	50A@125V/DC	●	
			72VDC	3.5A-5A	50A@72VDC	●	
			63/72VDC	6A-7A	50A@63/72VDC	●	
			32/48VDC	8A-20A	150A@32/48VDC	●	

注: (1)●=取得○=未取得
●=obtained ○=no obtained

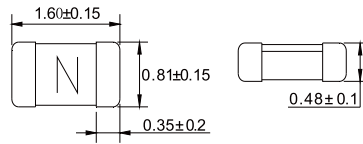
(2) F(Fast Acting)-快熔断
T(Time-Lag)-慢熔断

(3)详细内容请参照规格书
Please reference attached detailed datasheets

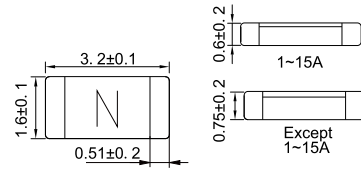
尺寸 DIMENSIONS(MM)



0402 Size



0603 Size



1206 Size

应用 APPLICATION

●主要应用于掌上电子产品，液晶显示器，电池组，硬盘驱动器，服务器，计算机，扫描仪和打印机，数据调制解调器，游戏机，车充，数码相机，DVD播放器，笔记本电脑，直流-直流转换器等

Mainly used in handheld electronics, LCD Displays, battery packs, hard disk drives, server, computer, printer and scanner, data modem, gaming console, car charger, digital cameras, DVD players, notebook PC, DC-DC converter, etc.



LCD Display LCD显示器



Battery Packs 电池包保护板



Server 服务器



Notebook 笔记本电脑



Hard disk drives 硬盘驱动器



BMS 电池管理系统



Printer 打印机



Car charger 车充



Game console 游戏机





关键特性 KEY FEATURES OF THE PRODUCT

- 尺寸多样化, 2410、1140、1032等
Dimension is diversity, 2410, 1140, 1032 etc
- 熔丝或熔片中空结构
Empty structure of fuse or fuse link
- 工作温度(-55°C~+125°C)
Operating temperature (-55°C~+125°C)
- 满足回流焊以及波峰焊接要求
Compatible with reflow and wave soldering
- 无铅, 无卤, 符合RoHS要求
Lead-free, Halogen-free, RoHS compliant
- 标准(Standard): UL248-1

参数表 PARAMETER LIST

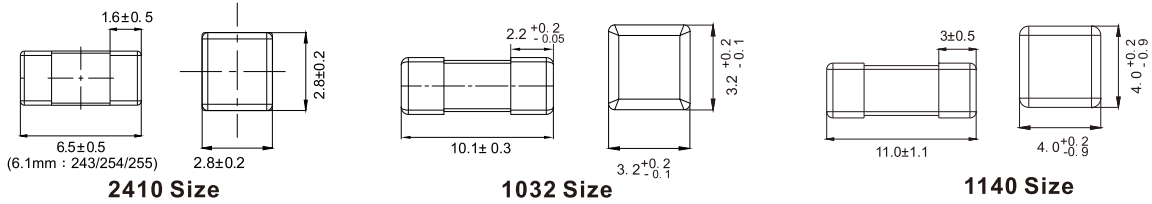
序号 No.	料号 Part No.	尺寸 Size	材质 Material	熔断特性 Fusing Characteristics	额定电压 Rated Voltage	额定电流 Rated Current	分断能力 Breaking Capacity	认证 Certification					
								TUV	CQC	cURus	KC	PSE	
1	241	2410	镀银	F	125VAC/DC	2A-10A	300Aor10In@125VAC/DC	○	○	●	○	○	
					125VAC/DC	12A-15A	50A@125VAC/DC	○	○	●	○	○	
2	244			T	125/250VAC/25VDC	250mA-800mA	100A@125/250VAC; 50A@125VDC	○	○	●	○	○	
					125/250VAC/25VDC	1A-6.3A	100A@125/250VAC; 50A@125VDC	●	●	●	●	○	
3	245			T	T	125/250VAC/25VDC	7A	100A@125/250VAC; 50A@125VDC	●	○	●	○	○
						125VAC/DC	250mA-7A	50A@125VAC/DC	○	○	●	○	○
4	246		T	T	350VAC	250mA-7A	50A@350VAC	○	○	●	○	○	
5	247		F	F	125VAC/125VDC	375mA-1.5A	100A@125VAC; 50A@125VDC	○	○	●	○	○	
6	249		F	F	72VDC	20A-40A	500A@72VDC	○	○	●	○	○	
7	243		镀金	F	250VAC/125VDC	100mA-12A	10KA@86VDC; 300A@125VDC	○	○	●	○	○	
					86VDC/125VDC	15A-20A	300A@125VDC; 500A@86/100VDC	○	○	●	○	○	
					125/86/100VDC	25-40A	50A@250VAC; 300A@125VDC	○	○	●	○	○	
8	254	镀金	T	250VAC/125VDC	100mA-12A	50A@250VAC; 300A@125VDC	○	○	●	○	○		
9	255	镀金	F	250VAC/125VAC	100mA-5A	200A@250VAC; 100A@125VAC	○	○	●	○	○		
10	474	1032	镀金	F	32V/72V DC 125V AC	15-30A	1000A@32V DC ; 500A@72V DC 150A@125V AC ; 100A@250V AC	○	○	●	○	○	
11	475	1140	镀银	F	400VDC/350VDC	100mA-3.15A	50A@400VDC; 100A@350VDC	○	○	●	○	○	
					125/250VAC/DC	100mA-5A	150A@125/250VAC/DC	○	○	●	○	○	
					125/250VAC/32VDC 72VDC	5A-10A	150A@125/250VAC 1000A@32VDC; 500A@72VDC	○	○	●	○	○	
12	476		镀银	T	400VDC/350VDC	100mA-3.15A	50A@400VDC, 100A@350VDC	○	○	●	○	○	
					125/250VAC/DC	100mA-5A	150A@125/250VAC/DC	○	○	●	○	○	
					125/250VAC/32VDC 72VDC	5A-10A	150A@125/250VAC 1000A@32VDC; 500A@72VDC	○	○	●	○	○	

注: (1)●=取得 ○=未取得
●=obtained ○=no obtained

(2) F(Fast Acting)-快熔断
T(Time-Lag)-慢熔断

(3)详细内容请参照规格书
Please reference attached detailed datasheets

尺寸 DIMENSIONS(MM)



应用 APPLICATION

●主要应用于交流/直流电源适配器, 电信设备系统电源, 便携式系统内置交流/直流转换器, LED线性照明, PD充电器, 移动储能, LED驱动板, LED调光控制器, 三相电源, 额定277V AC的公用事业连接器具和设备, PC服务器稳压模块, PC服务器散热风扇系统, 笔记本电脑, LCD/PDP电视, LCD显示器, LCD/PDP面板, LCD背光逆变器, 便携式DVD播放器, 电源, 网络, PC服务器, 冷却风扇系统, 存储系统, 电信系统, 无线基站, 白色家电, 游戏机, 办公自动化设备电池充电电路保护, 工业设备等

Mainly used in AC/DC power adaptor, telecom equipment system power, Portable system built-in AC/DC converter, LED linear lighting, PD charger, mobile energy storage, LED driver boards, LED dimmer controllers, 3-Phase power supplies, utility connected appliances and equipment rated at 277V AC, voltage regulator module for PC server, cooling fan system for PC server, Notebook PC, LCD/PDP TV, LCD monitor, LCD/PDP panel, LCD backlight inverter, portable DVD player, power supply, networking, PC server, Cooling fan system, Storage system, telecom system, wireless basestation, white goods, game console, office Automation equipment, battery charging circuit protection, industrial equipment, etc.



LCD Display LCD显示器



Notebook 笔记本电脑



Game console 游戏机



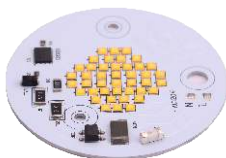
Drone Battery Pack 无人机电池包



Ups Power Supply Ups电源



High Voltage Variable Frequency Control Panel
高压变频控制板



LED linear lighting LED线性照明



Mobile energy storage 移动储能



PD charger PD充电器





关键特性 KEY FEATURES OF THE PRODUCT

- 尺寸多样化, 1140、1245等
Dimension is diversity, 1140, 1245 etc
- 熔丝或熔片中空结构
Empty structure of fuse or fuse link
- 工作温度(-55°C~+125°C)
Operating temperature (-55°C~+125°C)
- 满足回流焊以及波峰焊接要求
Compatible with reflow and wave soldering
- 无铅, 无卤, 符合RoHS要求
Lead-free, Halogen-free, RoHS compliant
- 标准(Standard): UL248-1

参数表 PARAMETER LIST

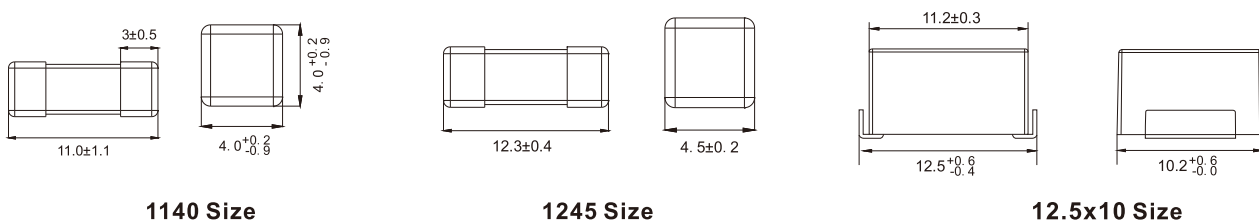
序号 No.	料号 Part No.	尺寸 Size	材质 Material	熔断特性 Fusing Characteristics	额定电压 Rated Voltage	额定电流 Rated Current	分断能力 Breaking Capacity	认证 Certification				
								TUV	CQC	cURus	KC	PSE
1	477	1140	镀银	T	125/250VAC/32VDC 72VDC	15A-40A	150A@125/250VAC 1000A@32VDC; 500A@72VDC	○	○	●	○	○
					125VAC/32VDC 60VDC	45A-60A	250A@125VAC 1000A@32VDC; 500A@60VDC	○	○	●	○	○
2	487	1245	镀银	F	125VAC 32/63/72VDC	80-100A	500A@125VAC 1000A@32/63/72VDC	○	○	●	○	○
3	491	12.5x10	镀锡	F	75VDC/100VDC	60-100A	1500A@75VDC; 1000A@100VDC	○	○	●	○	○
4	492	12.5x10	镀锡	T	75VDC/100VDC	60-100A	1500A@75VDC; 1000A@100VDC	○	○	●	○	○

注: (1) ●=取得 ○=未取得
●=obtained ○=no obtained

(2) F(Fast Acting)-快熔断
T(Time-Lag)-慢熔断

(3) 详细内容请参照规格书
Please reference attached detailed datasheets

尺寸 DIMENSIONS(MM)



应用 APPLICATION

- 刀片式服务器, 动力电池包, 基站电源, 不间断电源 (UPS), 高功率电池系统, 配电单元 (pdu), 工业工具等
Blade servers, power battery pack, base station power supply, uninterrupt power supply (UPS), high-power battery systems, power distribution units (PDUs), industrial tools.



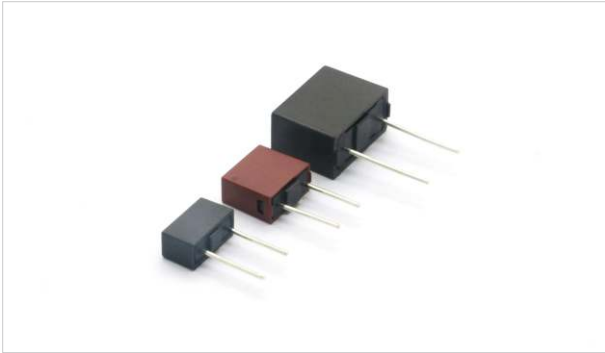
Blade servers 刀片式服务器



Power Battery Pack 动力电池包



Ups Power Supply Ups电源



关键特性 KEY FEATURES OF THE PRODUCT

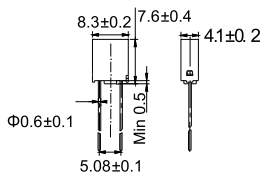
- 方形塑壳封装
Plastic square fuse
- 工作温度(-55°C~+125°C)
Operating temperature (-55°C~+125°C)
- 无铅, 无卤, 符合RoHS要求
Lead-free, Halogen-free, RoHS compliant
- 标准(Standard): UL248-1:933, IEC60127:931/932/936/938

参数表 PARAMETER LIST

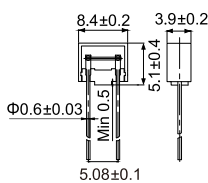
序号 No.	料号 Part No.	尺寸 Size	材质 Material	熔断特性 Fusing Characteristics	额定电压 Rated Voltage	额定电流 Rated Current	分断能力 Breaking Capacity	认证 Certification										
								TUV	VDE	CCC	CQC	cULRus	KC	PSE	BSI	SEMKO		
1	931	8.3x7.6	塑封	F	125VAC/250VAC	100mA-10A	130A@125VAC, 130A@250VAC	●	○	●	○	●	○	●	○	○	○	
2	932			T	250VAC/125VAC/277VAC 300VAC/400VAC	125mA-800mA 1A-2.5A 3.15A-10A 12A-16A	160A@250/125VAC, 130@277/300/400VAC	●	○	●	○	●	○	●	○	○	○	○
								●	○	●	○	●	○	●	○	○	○	
								○	○	○	○	●	○	○	○	○		
3	933			F	400VAC/250VDC	100mA-10A	100A@400VAC, 100A@250VDC	○	○	○	○	●	○	○	○	○	○	
4	936	8.4x5.1	T	400VAC/250VAC 250VDC	160mA-800mA 1A-3.15A 4A-6.3A	100A@400VAC, 130A@250VAC 60A@250VDC	○	○	○	○	●	○	○	○	○			
							○	○	○	○	●	○	○	○	○			
5	938	12.3x9.6	TT	250VAC/300VAC	100mA-25A	200A@250VAC, 100A@300VAC	●	○	○	●	○	○	○	○	○			

注: (1)●=取得○=未取得 (2)F(Fast Acting)-快熔断 T(Time-Lag)-慢熔断 (3)详细内容请参照规格书
 ●=obtained ○=no obtained Please reference attached detailed datasheets

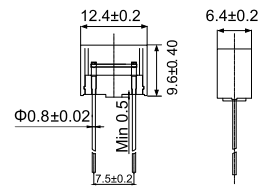
尺寸 DIMENSIONS(MM)



931/932/933 Size



936 Size(Mini)



938 Size(Max)

应用 APPLICATION

- 适配器, LED驱动电源, 充电器, 工业控制器, 938会取代部分小家电及TFT显示器电源模块的应用。
Adapter: LED driver power supply, charger, Industrial controllers, 938 will replace some small appliances and TFT display power module applications.



Adapter 适配器



TFT Display Power Module
TFT显示器电源模块

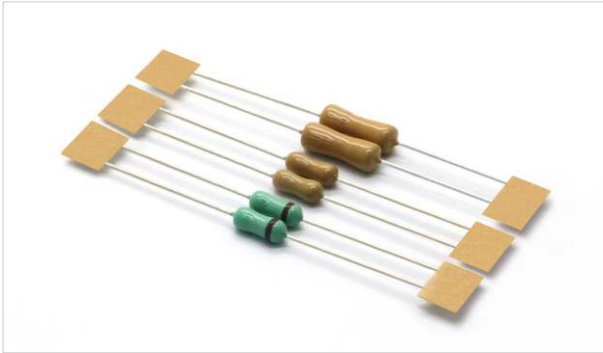


Led Driver Power Supply
LED 驱动电源



微型保险丝2x7/3.6x10

Micro Fuse 2x7/3.6x10



关键特性 KEY FEATURES OF THE PRODUCT

- 小型管状结构, 有2×7和3.6×10两种尺寸
Micro cartridge fuse, have 2×7mm and 3.6×10 two dimensions
- 瓷管涂层结构
Ceramic coated with epoxy
- 工作温度(-55℃~+125℃)
Operating temperature (-55℃~+125℃)
- 无铅, 无卤, 符合RoHS要求
Lead-free, Halogen-free, RoHS compliant
- 标准(Standard): UL248-1

参数表 PARAMETER LIST

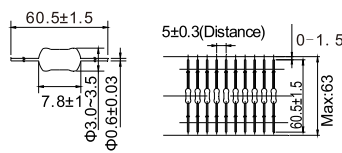
序号 No.	料号 Part No.	尺寸 Size	材质 Material	熔断特性 Fusing Characteristics	额定电压 Rated Voltage	额定电流 Rated Current	分断能力 Breaking Capacity	认证 Certification						
								TUV	VDE	cULus	CCC	cURus	KC	PSE
1	211	2x7	瓷管涂层	F	150/250VAC	100mA-2.5A	50A@150/250VAC	●	○	○	○	●	○	○
					150/250VAC	3.15A-10A	35A@150/250VAC	○	○	○	○	○	○	
					32VAC/16VAC	12A-20A	50A@32VAC, 100A@16VAC	○	○	○	○	○	○	
2	212	2x7	瓷管涂层	T	125/250VAC	200mA-800mA	50A@125/250VAC	●	○	●	○	○	○	○
					125/250VAC	1A-2.5A	35A@125/250VAC	●	○	●	●	○	●	●
					125/250VAC	3.15A-6.3A	35A@125/250VAC	○	○	○	○	○	○	○
3	316	3.6x10	瓷管涂层	T	350VAC/250VAC	250mA-10A	100A@350VAC, 150A@250VAC	●	○	○	○	○	○	○

注: (1) ●=取得 ○=未取得
●=obtained ○=no obtained

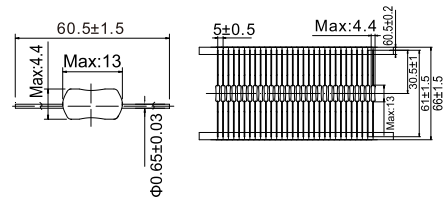
(2) F(Fast Acting)-快熔断
T(Time-Lag)-慢熔断

(3) 详细内容请参照规格书
Please reference attached detailed datasheets

尺寸 DIMENSIONS(MM)



2x7 Size



3.6x10 Size

应用 APPLICATION

- 应急灯, 电池保护, LED驱动电源, 适配器, LCD显示器, 小功率医疗设备
Emergency light, battery protection, LED power supply, adapter, LCD display, low power medical equipment.



Adapter 适配器



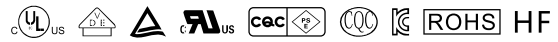
LCD Display LCD显示器



Low power medical equipment
小功率医疗设备

微型保险丝3.6x10

Micro Fuse3.6x10



关键特性 KEY FEATURES OF THE PRODUCT

- 3.6×10管状结构
3.6×10 cartridge fuse
- 玻璃管和陶瓷管
Glass tube and ceramic tube
- 工作温度(-55℃~+125℃)
Operating temperature (-55℃~+125℃)
- 无铅, 无卤, 符合RoHS要求
Lead-free, Halogen-free, RoHS compliant
- 标准(Standard): UL248-1:311/312;
IEC60127-3:331/332/333/334

参数表 PARAMETER LIST

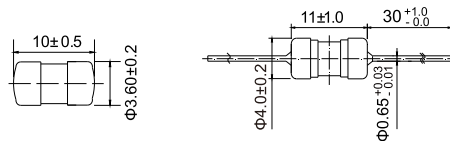
序号 No.	料号 Part No.	尺寸 Size	材质 Material	熔断特性 Fusing Characteristics	额定电压 Rated Voltage	额定电流 Rated Current	分断能力 Breaking Capacity	认证 Certification							
								TUV	VDE	cULUS	CQC	cURus	KC	PSE	CCC
1	311	3.6x10	玻璃	F	125VAC/250VAC	250mA-12A	50A@125/250VAC	○	○	○	○	●	○	○	○
2	312			T	125VAC/250VAC	250mA-10A	50A@125/250VAC	○	○	○	○	●	○	○	○
3	331			F	125VAC/250VAC	250mA-6.3A	50A@125VAC, 35A or 10In@250VAC	○	○	○	○	●	○	○	○
					125VAC/250VAC	7A-10A	50A@125/250V AC	○	○	○	○	○	○	○	
4	332	T	125VAC/250VAC	250mA-800mA	50A@125VAC, 35A or In@250VAC	●	○	○	●	●	○	○	○		
			125VAC/250VAC	1A-6.3A	50A@125V/250VAC	●	○	○	●	●	○	●	○		
			125VAC/250VAC	8A-10A	50A@125V/250VAC	○	○	○	○	○	○	○			
5	333	3.6x10	陶瓷	F	125VAC/250VAC	315mA-10A	50A@125VAC, 35A or 10In@250VAC 50A@125/250VAC	○	○	●	○	○	○	○	○
6	334			T	125VAC/250VAC	250mA-800mA	50A@125VAC, 35A or 10In@250VAC	○	●	●	○	●	○	○	○
					125VAC/250VAC	1A-5A	50A@125VAC, 35A or 10In@250VAC	○	●	●	●	●	○	○	○
					125VAC/250VAC	6.3A-10A	50A@125/250VAC	○	○	○	○	○	○	○	

注: (1) ●=取得 ○=未取得
●=obtained ○=no obtained

(2) F(Fast Acting)-快熔断
T(Time-Lag)-慢熔断

(3) 详细内容请参照规格书
Please reference attached detailed datasheets

尺寸 DIMENSIONS(MM)



3.6x10 Size

应用 APPLICATION

- 主要应用于照明, 电源适配器, LED驱动电源, 电源设备、小家电及控制板等
Mainly used in Lighting, power adapter, led driver power supply ,electrical power unit, small appliances and control panel, etc.



Led Driver Power Supply
LED 驱动电源



Small Appliance 小型家电



Control Panel 控制板

小型保险丝5x20

Miniature Fuse5x20



关键特性 KEY FEATURES OF THE PRODUCT

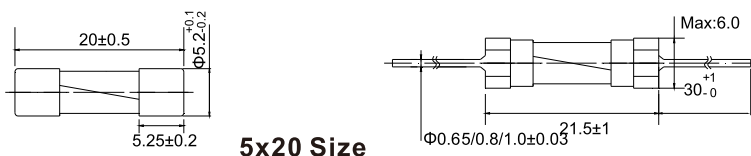
- 5×20管状结构
5×20 cartridge fuse
- 玻璃管和陶瓷管
Glass tube and ceramic tube
- 工作温度(-55℃~+125℃)
Operating temperature (-55℃~+125℃)
- 无铅, 无卤, 符合RoHS要求
Lead-free, Halogen-free, RoHS compliant
- 标准 (Standard) : UL248-1:511/512/525
IEC60127:521/522/524/525

参数表 PARAMETER LIST

序号 No.	料号 Part No.	尺寸 Size	材质 Material	熔断特性 Fusing Characteristics	额定电压 Rated Voltage	额定电流 Rated Current	分断能力 Breaking Capacity	Certification									
								TUV	VDE	cULus	CCC	CQC	cURus	KC	PSE	SEMKO	BSI
1	511	5x20	玻璃	F	125VAC/250VAC	250mA-800mA	10kA@125VAC,35A@250VAC										
					125VAC/250VAC	1A-3.5A	10kA@125VAC,100A@250VAC	○	○	●	○	○	○	○	○	○	
					125VAC/250VAC	4A-6.3A	10kA@125VAC,200A@250VAC										
					125VAC/250VAC	7A-15A	100A@125V/250VAC										
3	512			陶瓷	T	125VAC/250VAC	250mA-800mA	10kA@125VAC,35A@250VAC									
						125VAC/250VAC	1A-6.3A	10kA@125VAC,100A@250VAC	○	○	●	○	○	○	○	○	○
						125VAC/250VAC	7A-15A	400A@125VAC,100A@250VAC									
4	521				F	125VAC/250VAC	315mA-6.3A	10kA@125VAC,100A@250VAC	○	●	○	●	○	●	○	○	○
			125VAC/250VAC			8A-10A	10kA@125VAC,100A@250VAC	○	●	○	○	●	○	●	○	○	
5	522		T		250VAC	250mA-1.5A	35A or 10In@250VAC	●	○	○	○	○	○	○	○	○	
					250VAC	1A,1.6A-6.3A	35A or 10In@250VAC	○	●	○	○	○	○	○	○	○	
					250VAC	8A-16A	35A or 10In@250VAC	●	○	○	○	○	○	○	○	○	
6	524	T	125VAC/250VAC	500mA-800mA	10kA@125VAC,1500A@250VAC	○	●	○	○	○	○	○	○	○			
			125VAC/250VAC	1A-10A	10kA@125VAC,1500A@250VAC	○	●	○	○	○	○	○	○	○			
			125VAC/250VAC	12A-16A	10kA@125VAC,1500A@250VAC	●	○	○	○	○	○	○	○	○			
			125VAC/250VAC	20A-25A	400A@125VAC,200A@250VAC	○	○	○	○	○	○	○	○	○			
7	525	F	250VAC/300VAC	200mA-25A	1500A@250/300VAC	●	○	○	○	○	○	○	○				

注: (1)●=取得○=未取得 (2)F(Fast Acting)-快熔断 (3)详细内容请参照规格书
 ●=obtained ○=no obtained T(Time-Lag)-慢熔断 Please reference attached detailed datasheets

尺寸 DIMENSIONS(MM)



应用 APPLICATION

- 适用于250VAC或小于250VAC电压电路, 主要应用于家电产品, 消费类电子, 适配器, PC电源等电脑周边产品
 Suitable for 250VAC or less voltage circuit, used in household appliances, consumer electronics, adapters, PC power supplies and other computer peripheral products.



Household Appliances 家用电器



Consumer Electronics 消费类电子



Adapters 适配器



关键特性 KEY FEATURES OF THE PRODUCT

- 5×20管状结构, 中高压产品
5x20 cartridge fuse, Medium and high voltage products
- 陶瓷管
ceramic tube
- 工作温度(-55°C~+125°C)
Operating temperature (-55°C~+125°C)
- 无铅, 无卤, 符合RoHS要求
Lead-free, Halogen-free, RoHS compliant
- 标准 (Standard) : UL248-1:513/529/571/573;
IEC60127:529/582

参数表 PARAMETER LIST

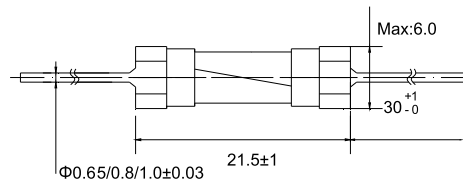
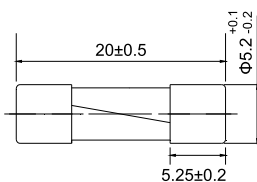
序号 No.	料号 Part No.	尺寸 Size	材质 Material	熔断特性 Fusing Characteristics	额定电压 Rated Voltage	额定电流 Rated Current	分断能力 Breaking Capacity	认证 Certification							
								TUV	VDE	cULus	CCC	CQC	cURus	KC	PSE
1	513	5x20	陶瓷	F	300VAC/300VDC	100mA-16A	1500A@300VAC, 100A@300VDC	○	○	○	○	○	○	○	
					300VAC/300VDC	20A	750A@300VAC, 100A@300VDC	○	○	○	○	○	○		
2	514			T	600VAC/500VDC	100mA-25A	100A@600VAC, 400A@500VDC	●	○	●	○	○	○	○	
3	515			FF	300VAC/250VAC	100mA-16A	1500A@250VAC, 1500A@300VAC	●	○	●	○	○	○	○	
					300VAC/250VAC	20A-25A	750A@250VAC, 750A@300VAC	○	○	○	○	○	○		
4	517			FF	600VAC/500VDC	100mA-25A	100A@600VAC, 400A@500VDC	●	○	●	○	○	○	○	
5	529			F	600VAC/500VDC	100mA-25A	100A@600VAC, 400A@500VDC	●	○	●	○	○	○	○	
					420VAC/420VDC	100mA-25A	100A@600VAC, 400A@500VDC	○	○	○	○	○	○		
6	571			F	600VAC	200mA-1A	1000A@600VAC	○	○	●	○	○	○	○	
					600VAC	1.6A-20A	200A@600VAC	○	○	○	○	○	○		
7	573	F	500VDC/400VDC	200mA-10A	300A@500VDC, 2KA@400VDC	○	○	●	○	○	○	○			
			500VDC	12A-20A	300A@500VDC	○	○	○	○	○	○				
8	582	T	600VAC	500mA-10A	200A@600VAC, 300A@500VDC, 2KA@400VDC	●	○	●	○	○	○	○			
			500VDC/400VDC	500mA-10A	300A@500VDC, 2KA@400VDC	○	○	○	○	○	○				
					600VAC/500VDC	12A-20A	200A@600VAC, 300A@500VDC	○	○	○	○	○	○		

注: (1)●=取得 ○=未取得
●=obtained ○=no obtained

(2) F(Fast Acting)-快熔断
T(Time-Lag)-慢熔断

(3) 详细内容请参照规格书
Please reference attached detailed datasheets

尺寸 DIMENSIONS(MM)



5x20 Size

应用 APPLICATION

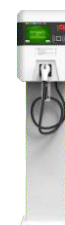
- 中高压产品: 420VAC/DC 500DC, 600VAC, 主要用于变频电路中的电机、电控保护, 服务器电源、高压路灯、充电桩等电路保护
Medium and high voltage parts: 420VAC/DC, 500DC, 600VAC, mainly used for circuit protection, such as inverter, circuit motor and electronic control, server power supply, high voltage street lamp, charging pile, etc.



Low power servo power supply
小功率伺服器电源



Street Lamp 路灯



Charging Pile 充电桩



关键特性 KEY FEATURES OF THE PRODUCT

- 6×30管状结构
6×30 cartridge fuse
- 玻璃管和陶瓷管
Glass tube and ceramic tube
- 工作温度(-55°C~+125°C)
Operating temperature (-55°C~+125°C)
- 无铅, 无卤, 符合RoHS要求
Lead-free, Halogen-free, RoHS compliant
- 标准(Standard): UL248-1

参数表 PARAMETER LIST

序号 No.	料号 Part No.	尺寸 Size	材质 Material	熔断特性 Fusing Characteristics	额定电压 Rated Voltage	额定电流 Rated Current	额定电压分断能力 Rated Voltage Breaking Capacity	认证批准 Agency Approvals					
								TUV	cULus	CQC	cURus	PSE	
2	611	6x30	玻璃	F	125VAC/250VAC	500mA-800mA	10kA@125VAC, 35A@250VAC	○	●	●	●	●	
					125VAC/250VAC	1A-3A	10kA@125VAC, 100A@250VAC						
					125VAC/250VAC	3.15A-20A	10kA@125VAC, 200A@250VAC						
3	612			陶瓷	T	125VAC/250VAC	500mA-1A	10kA@125VAC, 35A@250VAC	○	●	●	●	●
						125VAC/250VAC	1.25A-3.5A	10kA@125VAC, 100A@250VAC					
						125VAC/@250VAC	4A-8A	10kA@125VAC, 200A@250VAC					
4	613		陶瓷		F	125VAC/250VAC	10A-20A	400A@125VAC, 200A@250VAC	○	●	○	●	○
						125VAC/250VAC	25A-30A	400A@125VAC, 100A@250VAC					
						125VAC/250VAC	500mA-1A	10kA@125VAC, 35A@250VAC					
				125VAC/250VAC		1.25A-3.5A	10kA@125VAC, 100A@250VAC						
5	614		陶瓷	T	125VAC/250VAC	4A-10A	10kA@125VAC, 200A@250VAC	○	●	○	●	○	
					125VAC/250VAC	12A-20A	400A@125VAC, 200A@250VAC						
		125VAC/250VAC			25A	400A@125VAC, 200A@250VAC							
6	616	陶瓷	T	125VAC/250VAC	500mA-800mA	10kA@125VAC, 35A@250VAC	○	●	○	●	●		
125VAC/250VAC	1A-3.5A			10kA@125VAC, 100A@250VAC									
7	617	陶瓷	F	125VAC/250VAC	4A-20A	10kA@125VAC, 200A@250VAC	○	●	○	●	●		
				125VAC/250VAC	25A-30A	400A@125VAC, 100A@250VAC							
6	616	陶瓷	T	250VAC/150VDC	30A-50A	1500A@250VAC, 200A@150VDC	○	●	○	●	○		
7	617			250VAC/150VDC	20A-50A	200A@150V DC, 1500A@250V AC						○	●

注: (1)●=取得○=未取得
●=obtained ○=no obtained

(2) F(Fast Acting)-快熔断
T(Time-Lag)-慢熔断

(3) 详细内容请参照规格书
Please reference attached detailed datasheets

应用 APPLICATION

- 低压部分: 250VAC, 主要应用于空调电控板, UPS电源, 工业产品
The low-voltage part of 250VAC, mainly used in electronic control board of air conditioner, UPS power supply, industrial products.



Air Conditioning 空调



UPS Power Supply USP电源



Electric Tools 电动工具



关键特性 KEY FEATURES OF THE PRODUCT

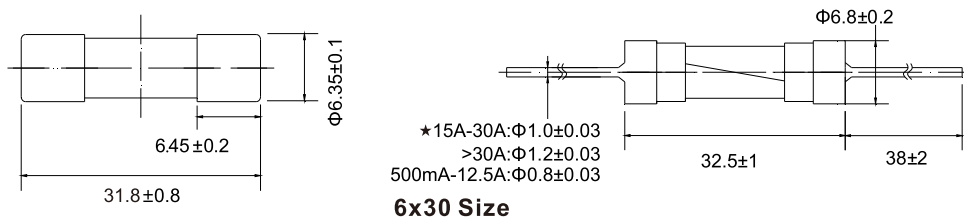
- 6×30管状结构, 中高压产品
6x30 cartridge fuse, Medium and high voltage products
- 陶瓷管
ceramic tube
- 工作温度(-55℃~+125℃)
Operating temperature (-55°C~+125°C)
- 无铅, 无卤, 符合RoHS要求
Lead-free, Halogen-free, RoHS compliant
- 标准(Standard): UL248-1

参数表 PARAMETER LIST

序号 No.	料号 Part No.	尺寸 Size	材质 Material	熔断特性 Fusing Characteristics	额定电压 Rated Voltage	额定电流 Rated Current	额定电压分断能力 Rated Voltage Breaking Capacity	认证批准 Agency Approvals				
								TUV	cULus	CQC	cURus	PSE
1	610	6x30	陶瓷	T	600VAC/150VDC	21A	200A@600VAC, 200A@150VDC	○	○	○	●	○
1	615			F	1000VAC	15-50A	1500A@1000VAC	○	○	○	●	○
2	619			F	660VAC/500VAC	15-40A	400A@660VAC 800A@500VAC	○	○	○	●	○
3	682			F	500VAC/500VDC	10A-30A	30KA@500VAC 20KA@500VDC	●	○	○	●	○
4	683			F	500VAC/DC	20A-30A	1KA@500VAC/DC	●	○	○	●	○
5	691			F	600VAC/VDC	200mA-12A	10kA@600VAC/VDC	●	○	○	●	○
6	693			F	1000VAC/VDC	200mA-3A	10kA@1000VAC/VDC	○	○	○	●	○
7	694			F	660VAC/VDC	15A-30A	1kA@660VAC/VDC	○	○	○	●	○
8	696	F	600VAC/VDC	15A-30A	1kA@600VAC/VDC	○	○	○	●	○		

注: (1)●=取得 ○=未取得 (2)F(Fast Acting)-快熔断 T(Time-Lag)-慢熔断 (3)详细内容请参照规格书
 ●=obtained ○=no obtained Please reference attached detailed datasheets

尺寸 DIMENSIONS(MM)



应用 APPLICATION

- 中高压产品: 500VAC/DC,主要应用于变频电路中的电机、电控保护, 服务器电源、高压路灯充电桩等电路保护;660VAC/DC,1000VACDC 主要用于充电桩, 万用表。

Medium voltage part of 500DC, mainly used in electric motor, electric control protection of frequency conversion circuit, server power supply, high voltage street lamp, charging pile and other circuit protection, High-voltage parts of 600VAC/DC and 1000VAC/DC are mainly used in charging pile and multimeter.



小型保险丝6x25

Miniature Fuse 6x25

UL ROHS HF



关键特性 KEY FEATURES OF THE PRODUCT

- 6x25管状结构
6x25 cartridge fuse
- 工作温度(-55°C~+125°C)
Operating temperature (-55°C~+125°C)
- 无铅, 无卤, 符合RoHS要求
Lead-free, Halogen-free, RoHS compliant
- 标准(Standard): UL248-1

关键特性 KEY FEATURES OF THE PRODUCT

- 6x25管状结构, 英规插头专用
6x25 Cartridge Fuse, Special use for British plug
- 工作温度(-55°C~+125°C)
Operating temperature (-55°C~+125°C)
- 无铅, 无卤, 符合RoHS要求
Lead-free, Halogen-free, RoHS compliant
- 标准(Standard): BS1362

参数表 PARAMETER LIST

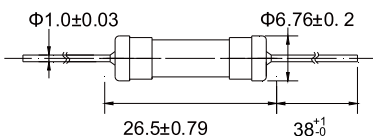
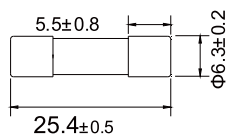
序号 No.	料号 Part No.	尺寸 Size	材质 Material	熔断特性 Fusing Characteristics	额定电压 Rated Voltage	额定电流 Rated Current	分断能力 Breaking Capacity	认证 Certification							
								TUV	ASTA	cULus	CCC	CQC	cURus	KC	PSB
1	671	6x25	陶瓷	T	75V DC/60V DC	5A-50A	2.5kA@75V DC, 5.0kA@60V DC	○	○	○	○	○	●	○	○
2	AF63	6x25	陶瓷	F	264V AC	1A-13A	6kA@264VAC	○	●	○	●	○	○	○	●

注: (1) ●=取得 ○=未取得
●=obtained ○=no obtained

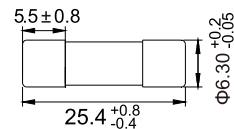
(2) F(Fast Acting)-快熔断
T(Time-Lag)-慢熔断

(3)详细内容请参照规格书
Please reference attached detailed datasheets

尺寸 DIMENSIONS(MM)



671 Size



AF63 Size

应用 APPLICATION



5G communication base station
5G通讯基站
671应用



British Standard Plug
英规插头
AF63应用



关键特性 KEY FEATURES OF THE PRODUCT

- 熔丝保险丝
Melting wire fuse
- 额定电流: 40A-100A
Rated Current:40A-100A
- 工作温度(-55°C~+125°C)
Operating temperature (-55°C~+125°C)



关键特性 KEY FEATURES OF THE PRODUCT

- 6x40管状结构
6x40 cartridge fuse
- 额定电流: 400mA-1A
Rated Current:400mA-1A
- 工作温度(-55°C~+125°C)
Operating temperature (-55°C~+125°C)

参数表 PARAMETER LIST

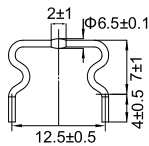
序号 No.	料号 Part No.	尺寸 Size	材质 Material	额定电流 Rated Current	额定电压 Rated Voltage	工作温度范围 Operating Temperature Range
1	253	12.5x11	铜银合金	40A-100A	80V DC	-55°C~+125°C
2	720	6x40	玻璃	400mA-1A	5KV AC	-55°C~+125°C

注: (1)●=取得○=未取得
●=obtained ○=no obtained

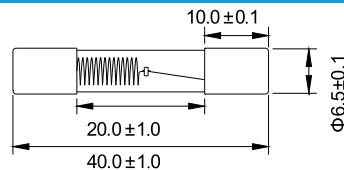
(2) F(Fast Acting)-快熔断
T(Time-Lag)-慢熔断

(3)详细内容请参照规格书
Please reference attached detailed datasheets

尺寸 DIMENSIONS(MM)

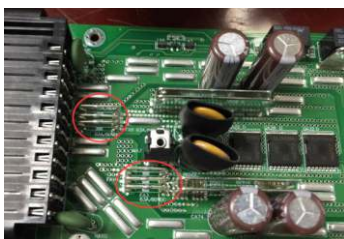


253 Size



720 Size

应用 APPLICATION



DC Power Supply 直流电源
253应用



Microwave oven 微波炉
720应用



插片保险丝

BLADE FUSE



关键特性 KEY FEATURES OF THE PRODUCT

- 料号: BF系列(小型插片保险丝、中型插片保险丝、大型插片保险丝)
Part No.: BF Series(mini blade fuse, medium blade fuse, max blade fuse)
- 额定电流: BF2:3A-30A, BF4:2A-40A, BF6:20A-100A
Rated Current: BF 2:3A-30A, BF4:2A-40A
- 额定电压分断能力: BF2/BF4:1KA@32VDC, BF6:1KA@58VDC
Rated Voltage Breaking Capacity: BF2/BF4:1KA@32VDC, BF6:1KA@58VDC
- 标准(Standard): BF2/BF4:UL275A, BF6: ISO 8820-3

参数表 PARAMETER LIST

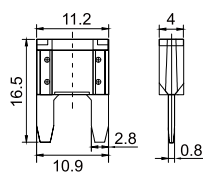
序号 No.	料号 Part No.	尺寸 Size	材质 Material	额定电压 Rated Voltage	额定电流 Rated Current	分断能力 Breaking Capacity	认证 Certification						
							TUV	VDE	cULus	CQC	cURus	KC	PSE
1	BF2	11.2x16.5	镀锡	32V DC	3A-30A	1KA@32VDC	○	○	●	○	○	○	○
2	BF4	19.05x18.54	镀锡	32V DC	2A-40A	1KA@32VDC	○	○	●	○	○	○	○
3	BF6	34.4x29.7	镀锡	58V DC	20A-100A	1KA@58VDC	○	○	○	○	○	○	○

注: (1) ●=取得 ○=未取得
●=obtained ○=no obtained

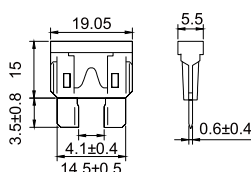
(2) F(Fast Acting)-快熔断
T(Time-Lag)-慢熔断

(3) 详细内容请参照规格书
Please reference attached detailed datasheets

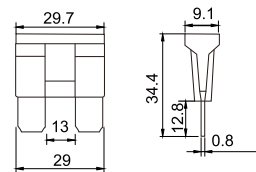
尺寸 DIMENSIONS(MM)



BF2 Size(Mini)

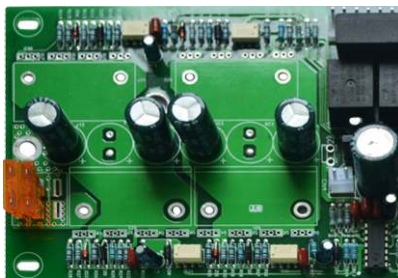


BF4 Size(Medium)

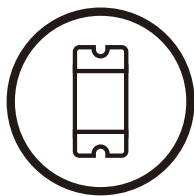
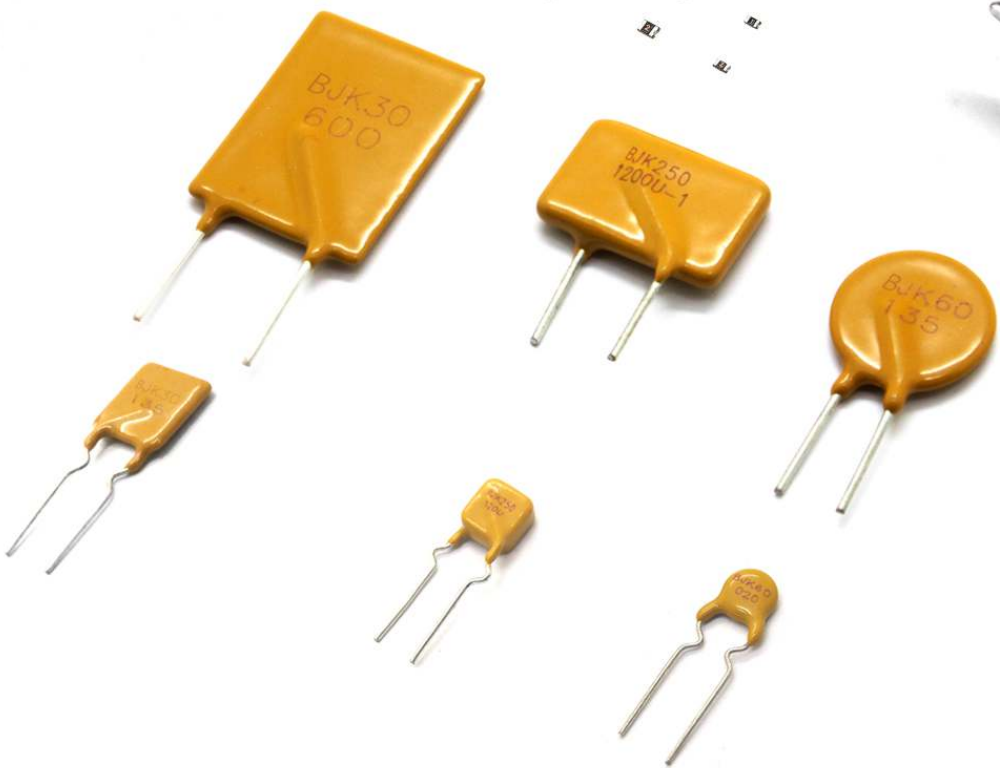
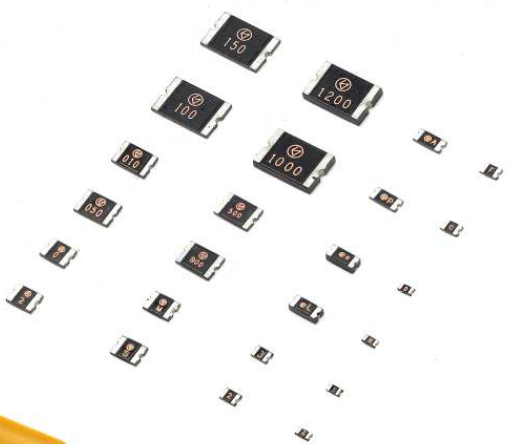


BF6 Size(Max)

应用 APPLICATION



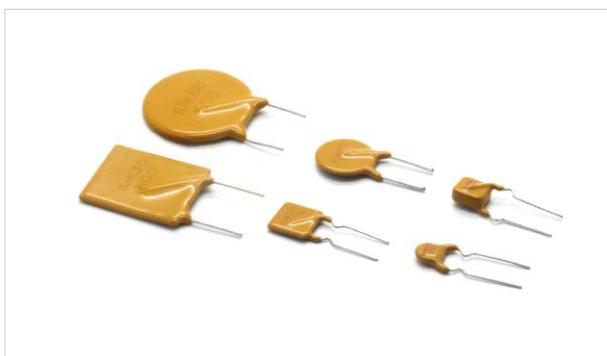
UPS Power Board
UPS电源板



PPTC

Over Current Protection

Normal and Low Rho categories, .0402,0603,0805,1206,1210,1812,2920 Size



关键特性 KEY FEATURES OF THE PRODUCT

- 插件式结构
Radial leaded devices
- 阻燃环氧树脂绝缘材料符合UL94V-0要求
Flame retardant epoxy polymer insulating material meets UL94 V-0 requirement
- 工作温度(-40°C~+85°C)
Operating temperature (-40°C~+85°C)
- 无铅, 无卤, 符合RoHS要求
Lead-free, Halogen-free, RoHS compliant
- 标准(Standard): UL1434, EN62319

参数表 PARAMETER LIST

序号 No.	料号 Part No.	额定电流 Rated Current	最大电流 Max Fault Current	额定电压 Rated Voltage	工作温度范围 Operating Temperature Range	认证 Certification		
						TUV	cURus	CCC
1	BJK16	100mA-14A	100A	16VDC	-40°C to 85°C	○	○	○
2	BJK30	750mA-9A	40A	30VDC		○	●	○
3	BJK60	50mA-5A	40A	60VDC		○	●	○
4	BJK250	20mA-2A	10A	250VAC		●	●	●
5	BJK600	50mA-160mA	3A	600VAC		○	○	○

注: (1) ●=取得 ○=未取得
●=obtained ○=no obtained

(2) 详细内容请参照规格书
Please reference attached detailed datasheets

应用 APPLICATION

- 玩具, 智能学习机, 电动车窗, 小型马达电源, 家电, 安防以及照明
Toys, intelligent learning machines, electric Windows, small motor power, home appliances, security and lighting.



safety equipment 安防设备



Intelligent Learning Machines
智能学习机



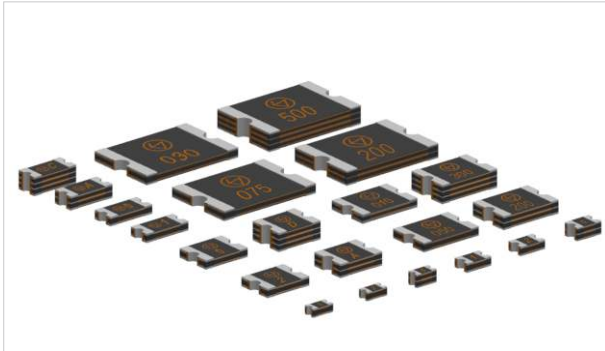
Toys 玩具



Electric Windows 电动车窗



Telecommunications equipment
电信设备



关键特性 KEY FEATURES OF THE PRODUCT

- 常规阻值
Normal Resistance
- 尺寸多样化,0603、0805、1206、1210、1812、2920
Dimensional diversity,0603,0805,1206,1210,1812,2920
- 工作温度(-40°C~+85°C)
Operating temperature (-40°C~+85°C)
- 无铅, 无卤, 符合RoHS要求
Lead-free, Halogen-free, RoHS compliant
- 标准(Standard): UL1434, EN62319

参数表 PARAMETER LIST

序号 No.	料号 Part No.	尺寸 Size	额定电流 Rated Current	最大电流 Max Fault Current	额定电压 Rated Voltage	产品类型 Product Type	工作温度范围 Operating Temperature Range	认证 Certification	
								TUV	cURus
1	BNF	0603	40mA-500mA	40A	6V-24V	Normal SMD 常规产品	-40°C to 85°C	●	●
2	BNP	0805	50mA-1.1A	100A	6V-24V			●	●
3	BNN	1206	50mA-2A	100A	6V-60V			●	●
4	BNU	1210	50mA-2A	100A	6V-60V			●	●
5	BNM	1812	100mA-3A	100A	8V-60V			●	●
6	BNL	2920	300mA-5A	100A	6V-60V			●	●

注: (1)●=取得○=未取得 (2)详细内容请参照规格书
 ●=obtained ○=no obtained Please reference attached detailed datasheets

应用 APPLICATION

●手机, 电池包, 数码相机, DVD播放器, 硬盘驱动器, LED/LCD面板逆变器, LED照明电池充电电路保护, 笔记本电脑, 游戏机, 打印机等
 Cell phones, Battery packs, Digital cameras, DVD players, Hard disk drives, LED/LCD Panel Inverters, LED Lightings Battery Charging Circuit Protection, Notebooks/PCs, Gaming Consoles, Printers, Etc.



Notebook 笔记本电脑



Printer 打印机



phone 手机

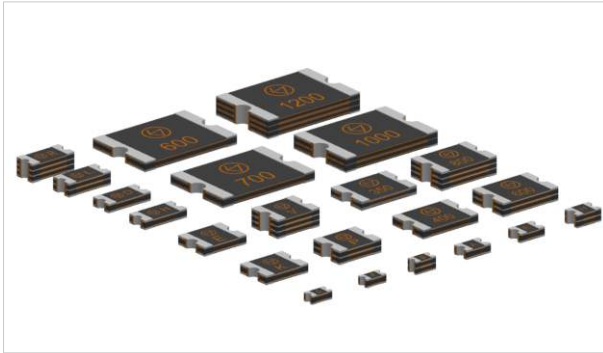


Battery Packs 电池包保护板



Hard disk drives 硬盘驱动器





关键特性 KEY FEATURES OF THE PRODUCT

- 超低阻值
Super Low Resistance
- 尺寸多样化,0402、0603、0805、1206、1210、1812、2920
Dimensional diversity,0402,0603,0805,1206,1210,1812,2920
- 工作温度(-40°C~+85°C)
Operating temperature (-40°C~+85°C)
- 无铅, 无卤, 符合RoHS要求
Lead-free, Halogen-free, RoHS compliant
- 标准(Standard): UL1434, EN62319

参数表 PARAMETER LIST

序号 No.	料号 Part No.	尺寸 Size	额定电流 Rated Current	最大电流 Max Fault Current	额定电压 Rated Voltage	产品类型 Product Type	工作温度范围 Operating Temperature Range	认证 Certification	
								TUV	cURus
1	BLA	0402	100mA-1A	50A	6V	Low Rho SMD 低阻产品	-40°C to 85°C	○	○
2	BLF	0603	350mA-3A	50A	6V/9V			●	●
3	BLP	0805	750mA-4A	50A	6V/12V			●	●
4	BLN	1206	1.5A-7.5A	50A	6V/12V			●	●
5	BLU	1210	1.5A-8A	50A	6V/12V			●	●
6	BLM	1812	2.6A-9A	50A	6V/12V			●	●
7	BLL	2920	5A-12A	50A	16V/24V			●	●

注: (1)●=取得○=未取得
●=obtained ○=no obtained

(2)详细内容请参照规格书
Please reference attached detailed datasheets

应用 APPLICATION

- USB集线器、端口和外围设备、主板USB和IEEE 1394保护、机顶盒和HDMI、光盘驱动器、游戏机端口保护通用电子等
USB hubs, ports and peripherals, motherboard USB & IEEE 1394 protection, set-top-box and HDMI, optical disk drives, game console port protection general electronics, etc.



USB hubs USB集线器



Set-top-box 机顶盒



HDMI HDMI接口



Optical disk drives 光盘驱动器



Motherboard USB 主板USB





Accessories

Fuse Terminals, Clips, Holders, USB-C, Assembly

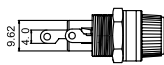


FH1-12-P, FH1-12-M



Voltage/Current
UL Rating
Mounting

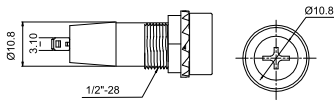
250VAC/10A
UL 94V0
Φ5*20mm



FH1-520-P



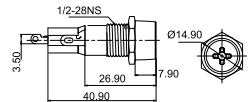
250VAC/10A
UL 94V0
Φ5*20mm



FH1-S-MZ, FH1-S-PZ



250VAC/10A
UL 94V0
Φ5*20mm

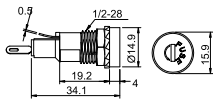


FH1-B-PZ, FH1-B-MW,
FH1-B-MZ, FH1-B-PW



Voltage/Current
UL Rating
Mounting

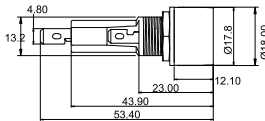
250VAC/10A
UL 94V2
Φ5*20mm



FH1-2



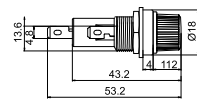
250VAC/10A
UL 94V2
Φ6*30mm



FH1-13



250VAC/10A
UL 94V0
Φ6*30mm

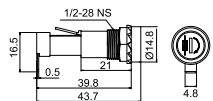


FH201-9-PW, FH201-9-PZ,
FH201-9-MW, FH201-9-MZ



Voltage/Current
UL Rating
Mounting

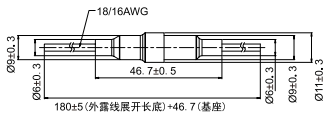
250VAC/15A
UL 94V2
Φ6*30mm



FH-208

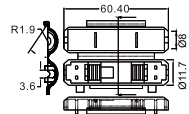


250VAC/6.3A
UL 94V0
Φ5*20mm



BE 602

250VAC/15A
UL 94V0
Φ6*30mm





	BW 701	BW 702	BW 703
Voltage/Current UL Rating Mounting	32VDC/30A UL94V0	32VDC/40A UL94V0	58VDC/80A UL94V0
	Blade Fuse(小型Mini)	Blade Fuse(中型medium)	Blade Fuse(大型Max)

	BH 501	BH 800	BH 240
Voltage/Current UL Rating Mounting	250VAC/10A UL 94V0 Φ5*20mm	250VAC/10A UL94V0 TE5 Fuse(H=3.0mm, H=4.3mm)	250VAC/10A UL94V0 2410

	PVC ROHS (FPFC21-6-11B) BH 503	PVC ROHS (FPFC33-11 630) BH 603	FH1-200CK-B, FH1-200CK-G UL US
Voltage/Current UL Rating Mounting	250VAC/10A UL94V0 Φ5*20mm	250VAC/30A UL94V0 Φ6*30mm	250VAC/10A UL 94V2 Φ5*20mm



BC501-035, BC501-040

BC502-040

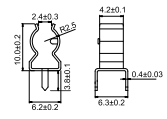
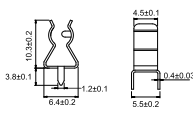
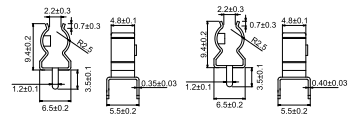
BC507-040

Material
Plating
Thickness
Mounting

Copper H62
Nickel
0.35m, 0.4mm
Φ5*20mm

High purity phosphor copper
Nickel
0.4mm
Φ5*20mm

Copper H62
Nickel
0.4mm
Φ5*20mm



BC511-240-A

BC522-040

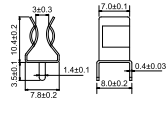
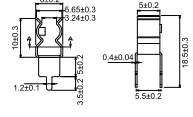
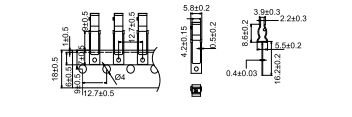
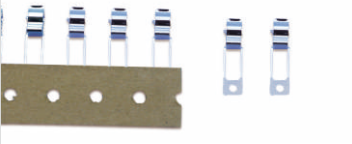
BC600-040

Material
Plating
Thickness
Mounting

High precision phosphor copper
BC511-240-A bright
Bright Sn
0.4mm
Φ5*20mm

Copper H62
Nickel
0.4mm
Φ5*20mm

Copper H62
Nickel
0.4mm
Φ6*30mm



BC603-050

BC603-250

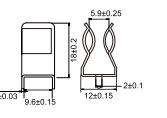
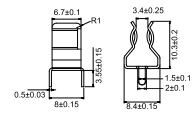
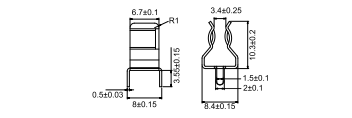
BC800

Material
Plating
Thickness
Mounting

Copper H62
Nickel
0.5mm
Φ6*30mm

Copper H62
Nickel Bright Sn
0.5mm
Φ6*30mm

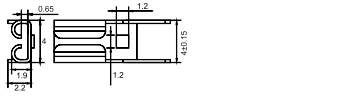
Spring Brass
Nickel
0.8mm
Φ10*38mm



Material
Plating
Thickness

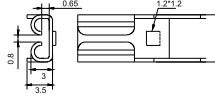
BC 701
For Mini Auto Fuse

Phosphor Bronze
Ni Plated, Bright Sn Plated
0.8mm



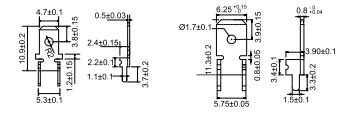
BC 702
For Medi Auto Fuse

Phosphor Bronze
Ni Plated, Bright Sn Plated
0.8mm



BT002-075-A, BT002-080

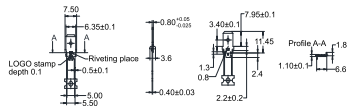
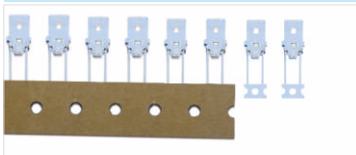
Copper H62, sermi-hard
Nickel
0.75mm, 0.8mm



Material
Plating
Thickness

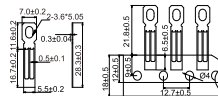
BT030-240

Copper H65, Semi-hard
Bright Sn
1~3µm



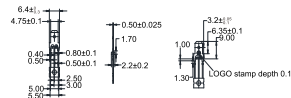
BT020-230

Iron
Bright Sn
0.3mm



BT029-150

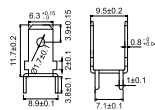
Copper H62, sermi-hard
Matte Sn
3~6µm



Material
Plating
Thickness

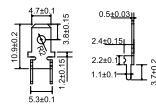
BT004-080

Copper H62, sermi-hard
Nickel
0.8mm, 4Pins



BT001-050-A

Copper H62, sermi-hard
Nickel
4.7mm



董事长寄语

CEO ADDRESS



At the beginning of 2020, we overcame difficulties to back to the company in the reverse march. Just for the call of the company, all members of BETTERFUSE returned to the post from all over the country. Do you still remember the lofty sentiments that one of members of BETTERFUSE wrote in his doggerel during his return journey trip against wind and rain, and the courage of "the yellow flowers in the flame of war are especially fragrant" that our BETTER Communist Party of China presented during preventing and controlling the Covid-19? We were moving forward with our partners hand in hand and finally achieved good results with growth outperformed the average level of Dongguan City, the excess realization of the set target for the whole year.

At the beginning of the New Year of 2021, let us review the following five core concepts.

Brand:

The brand BETTERFUSE has gone deeper into the hearts of customers, and most production lines have made breakthroughs in terms of volume while the brand ADLER is shining in the international arena. It has entered the procurement catalog of many well-known brands and gained good recognition in the world. The two brands, BETTERFUSE and ADLER, are occupying an increasing market share. We see encouraging trends, the priority applications especially in 5G, new energy and other areas, which can reflect the brand occupancy fully.

Energy :

Under serious outbreak of Covid-19, our company is in first batch to resume production in Dongguan and form a considerable retrograde growth, which fully reflects the resilience and strength of the company's management. Under the precondition of well-done pandemic prevention measures, all kinds of strategic and tactical activities are done orderly as planned, such as factory celebration, exhibition, expansion of factory, community, recruitment, team building activities, which continues to inject vigor for the team, staff and brand.

Team:

Team has always been a key element of our core philosophy. We are constantly adapting our formation according to the external environment such as modular management start-up, specialization, accountability. In this New Year, the employee evaluation will be introduced in to our management and more high-quality professionals will be employed. The German team, Xi 'an team, OT team, BXW team and ADS team are all constantly changing and eventually transforming into butterflies, forming their own professional team groups, which will make our business bigger and more stable.

Efficiency :

Efficiency is the top priority of all operation and management. After the painful strategic adjustment in the last two years, we climbed back up from the bottom of the valley and the business index recovered and surpassed the previous high level. The increased investment in IT hardware, software and system in the last two years will further promote the improvement of system efficiency.

Resource :

All members of BETTERFUSE are the resource integration in the very beginning of foundation. As the "Band of Brothers " model is our original DNA, so our resource sources are huge, and the system is relatively open and inclusive, just like a rapidly growing kapok tree. Our ADLER, ADS, ELB and all our subsequent merger and acquisition cooperation are based on the core concept of win-win coexistence with our upstream and downstream.

2020 has been a tough year, but we are pleased to see strong results and continued growth across our platforms.

Just as President Xi said, "Courage and perseverance are showed in difficulties, Jade is made after polished ."We have overcome the impact of the pandemic, successfully completed in 2020, and planned for 2021. As the year is coming to an end, and new spring is approaching, the pandemic seems to be increasing globally. We pray for peace in the world, and 2021 will be an extraordinary year. We are confident to outburst, energize with all of you.

BETTERFUSE CEO David Han
2021.1 Dongguan

2020年开工伊始,我们就是在艰难中逆行出征,公司一声召唤全体贝特卫士从全国各地奔赴岗位,还记得那位写着打油诗风雨兼程赶路的兄弟的豪情吗,还得我们中共贝特支部同志们每天防控检测“战役黄花分外香”的勇气吗?我们与各合作伙伴牵引前行.....,最终取得了不俗的成绩,增长跑赢东莞平均水平,超越实现全年的既定目标。

2021年新春之初,我们一起回顾以下五大核心理念的践行情况。

品牌:

旗下品牌BTF更加深入客户之心,大部分产线刷新量的突破。旗下ADL在国际上更是大放异彩,已进入诸多知名品牌采购目录,在全球得到很好的认知,BTF和ADL的市占越来越大。我们看到了可喜的趋势,特别是在5G,新能源等领域的优先应用,更足以体现品牌的占位。

活力:

在严重的疫情挑战之下,我们做到东莞最早一批复工复产,并形成可观的逆行增长,充分体现公司的管理的韧性和强度,同时在做好防疫措施前提下,有序开展各项既定战略及内外战术行动,如期进行厂庆,参展,扩厂,社团,招聘,团建等活动,持续为团队、员工、品牌注入活力。

团队:

公司团队一直是我们核心理念C位的要素,我们不断因应外部修正我们的阵形,模块式管理雏形启动,专业化,责任制。新年度我们还会与考核挂钩,不断引进更多高素质的专才,德国团队,西安团队,OT事业部团队,BXW事业部,ADS事业部均在不断蜕变最终脱蚕成蝶,形成各自专业的团队族群,这将让我们的事业·更大·更稳。

效率:

效率是所有经营管理的第一要义,我们经过前两年的剧痛的战略性调整,从谷底中从重爬上来,营业指标恢复并超越过去的高位,近两年加大投入IT软硬件和系统,将进一步促进系统效率的提升。

整合:

贝特卫士创立之初就是一种资源整合,“兄弟连”模式就是我们的原始DNA,故我们的资源来源宏大,体系相对开放包容,如同一棵快速长大的木棉花树。我们的ADL,我们的ADS,我们的ELB,我们的后续所有的并购合作均是出自此核心理念,与我们的上下游共赢共生。

2020年是异常艰辛的一年,但是我们很欣慰看到不错的运营结果旗下各平台正在发力持续增长.....

正如习主席所说:“艰难方显勇毅,磨砺始得玉成”。我们也是克服疫情影响,2020圆满收官,2021全面擘画,岁末在即,新春将至,疫情好像又在全球加重,我们祝愿天下太平,2021年也必将是一个不平凡年份,我们有信心与大家“聚变,赋能”!

贝特卫士 CEO 韩露
2021年1月



National High-tech Enterprise
 SC 32C National Technical
 Committee Member of China
 ISO 9001 Certified Company
 ISO 14001 Certified Company
 QC 080000 Certified Company
 IATF 16949 Certified Company

国家高新技术企业
 SC 32C 国内专家组成员单位
 ISO 9001 认证企业
 ISO 14001 认证企业
 QC 080000 认证企业
 IATF 16949 认证体系

Headquarters 总部

东莞市贝特电子科技股份有限公司
 Add.:Room 601 of 16Block, No.1 Headquarters Valley, Hsinchu Road,Songshan Lake
 High-tech Industrial Development Zone.Dongguan city Guangdong Province P.R.C.
 Tel: +86-769-2307 8202 / 2307 8212
 Fax: +86-769-8352 1857
 Website: www.betterfuse.com
 地址: 广东省东莞市松山湖高新技术产业开发区新竹路总部一号, 16栋六楼



Website



Wechat public account

Subsidiaries 集团成员

贝特卫士 (香港)
 Asiafuse (HK) Electronics Limited
 E-mail: davidhan@betterfuse.com

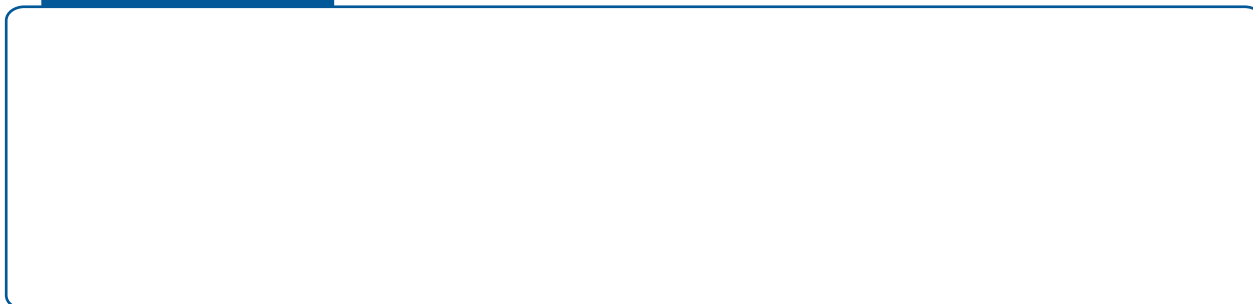
贝特卫士 (寮步)
 Tel: 86+769-8323 8731 / 8323 8732 E-mail: sls01@betterfuse.com

贝特卫士 (佛山)
 Tel : +86-757-82511089 / 82216739 E-mail: sls18@betterfuse.com

贝特卫士 (无锡)
 Tel: +86-510-85296619 / 85228806 E-mail: jameszhou@betterfuse.com

贝特卫士 (台湾)
 Tel: +886-921-617539 E-mail: sls29@betterfuse.com

Authorized Agent 特约经销商



Note: The above ertification marks show a summary of all available product certification, each product's own specific certifications shall prevail.

► Ask for copies of our detailed product catalogs or visit our website at: www.betterfuse.com