



FUSE HOLDERS & RECEPTACLES

ELECTRIC PARTS

Catalog 190901



FUSE HOLDERS

AC RATING

HEAVY DUTY

PCB MOUNT

DC RATING

1~14



IN-LINE FUSE HOLDERS

AC RATING

DC RATING

15~16



AUTO IN-LINE FUSE HOLDERS

DC RATING

17~19



FUSE BLOCKS

20~27



AUTOMOTIVE BOLT-IN FUSE HOLDERS

28



RECEPTACLES

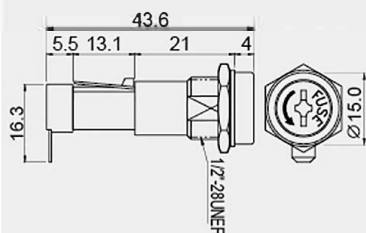
29

INTERNATIONAL APPROVALS LIST

30~32

R3-9

cULus



A
B
C
C O

(4.8mm)0.187"
Quick connect

0.5~4.5mm MAX

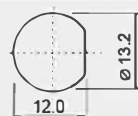
FEATURES:

- Material:
Frame and cap: PBT(UL flame: 94V-0).
Terminal: tin plated brass.
- Mounted by nut.
- Metal or plastic nut is optional.

CAP	FUSE	RATING
Bayonet type (tool release)	Ø6.35*30mm Ø6.35*31.8mm	15A 250V AC
Bayonet type (tool release)	Ø5.0*20mm	10A 250V AC
Screw type (tool release)	Ø6.35*30mm Ø6.35*31.8mm	15A 250V AC
Screw type (tool release)	Ø6.35*30mm Ø6.35*31.8mm	15A 250V AC

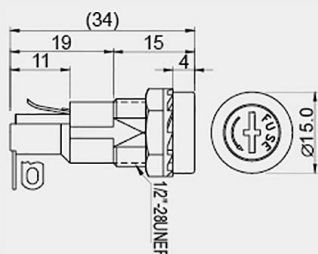


CUT-OUT



R3-11

cULus



B

(4.0mm)0.156"
Solder

10A 250V AC
4.5mm MAX

FEATURES:

- Material:
Frame: phenolic(UL flame: 94V-1).
Cap: PBT(UL flame: 94V-0).
Terminal: nickel plated brass.
- Mounted by nut.
- Metal or plastic nut is optional.

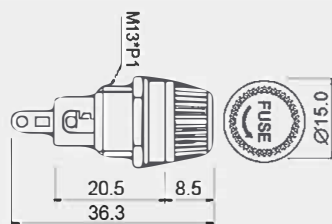
CAP	FUSE
Bayonet type (tool release)	Ø5.0*20mm
Screw type (tool release)	Ø5.0*20mm

CUT-OUT



R3-12

cULus



(4.0mm)0.156"
Solder

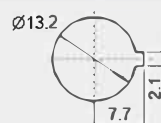
10A 250V AC
4.5mm MAX

FEATURES:

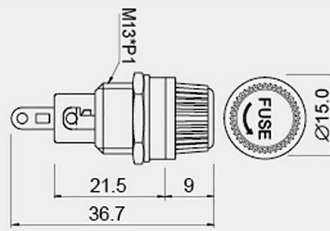
- Material:
Frame and cap: phenolic(UL flame: 94V-1).
Terminal: nickel plated brass.
- Mounted by nut.
- Metal or plastic nut is optional.

CAP	FUSE
Screw type	Ø5.0*20mm

CUT-OUT



R3-12E



⌋ (4.0mm)0.156"
Solder

10A 250V AC
⌋ 4.5mm MAX

FEATURES:

- Material:
Frame and cap: phenolic(UL flame: 94V-1).
Terminal: nickel plated brass.
- Mounted by nut.
- Metal or plastic nut is optional.

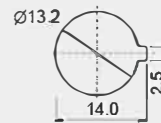
CAP

FUSE

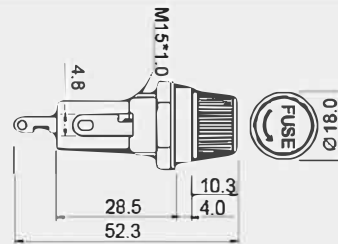
Screw type

Ø 5.0*20mm

CUT-OUT



R3-13



⌋ (4.2mm)0.163"
Solder

10A 250V AC
⌋ 0.5~4.5mm

⌋ (4.8mm)0.187"
Quick connect

FEATURES:

- Material:
Frame and cap: phenolic(UL flame: 94V-1).
Terminal: nickel plated brass.
- Mounted by nut.
- Metal or plastic nut is optional.

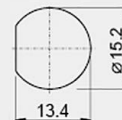
CAP

FUSE

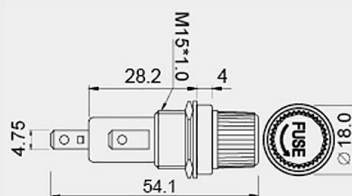
Screw type

Ø 6.35*30mm
Ø 6.35*31.8mm

CUT-OUT



R3-13E



⌋ (4.8mm)0.187"
Quick connect

10A 250V AC
⌋ 0.5~4.5mm

FEATURES:

- Material:
Frame and cap: phenolic(UL flame: 94V-1).
Terminal: nickel plated brass.
- Mounted by nut.
- Metal or plastic nut is optional.

CAP

FUSE

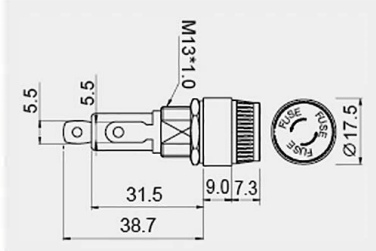
Screw type

Ø 6.35*30mm
Ø 6.35*31.8mm

CUT-OUT



R3-14A



2

CAP	FUSE	RATING
Bayonet type	 Ø 6.35*30mm Ø 6.35*31.8mm	10A 250V AC
Bayonet type	 Ø 6.35*30mm Ø 6.35*31.8mm	30A 250V AC



(5.5mm)0.230"
Solder

0.5~6.5mm

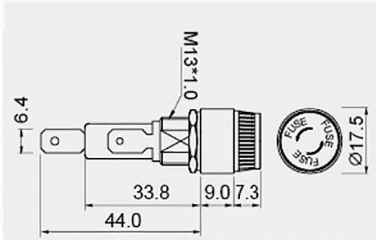
FEATURES:

- Material:
Frame and cap: phenolic(UL flame: 94V-1).
Terminal: tin plated brass, for R3-14A.
Terminal: tin plated copper, for R3-14A2.
- Mounted by nut.

CUT-OUT



R3-14C

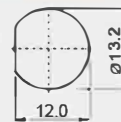


(6.4mm)0.250"
Quick connect

10A 250V AC
0.5~6.5 mm

CAP	FUSE
Bayonet type	 Ø 6.35*30mm Ø 6.35*31.8mm

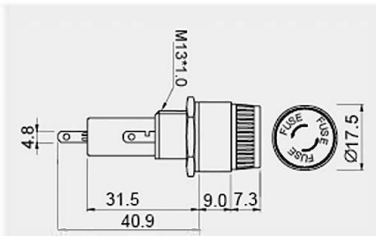
CUT-OUT



FEATURES:

- Material:
Frame and cap: phenolic(UL flame: 94V-1).
Terminal: tin plated brass.
- Mounted by nut.

R3-14D

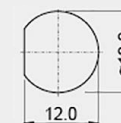


(4.8mm)0.187"
Quick connect

10A 250V AC
0.5~6.5mm

CAP	FUSE
Bayonet type	 Ø 6.35*30mm Ø 6.35*31.8mm

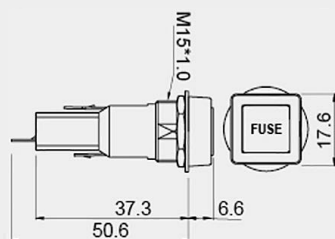
CUT-OUT



FEATURES:

- Material:
Frame and cap: phenolic(UL flame: 94V-1).
Terminal: nickel plated brass.
- Mounted by nut.

R3-21A



(3.8mm)0.148"
Solder

10A 250V AC
 $\varnothing_{\pm 0.1}^{+0.2}$ 0.5~4.5mm

FEATURES:

- Material:
Frame : phenolic(UL flame: 94V-1).
Cap : nylon(UL flame: 94V-2).
Terminal: nickel plated brass.
- Mounted by nut.

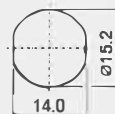
CAP

FUSE

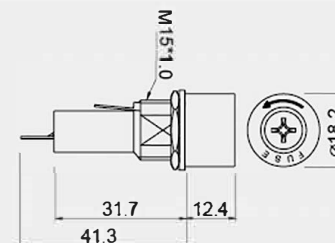
Bayonet type

\varnothing 6.35*30mm

CUT-OUT



R3-22A



(4.8mm)0.187"
Quick connect

10A 250V AC
 $\varnothing_{\pm 0.1}^{+0.2}$ 0.5~5mm

FEATURES:

- Material:
Frame and cap: phenolic(UL flame: 94V-1).
Terminal: nickel plated brass.
- Mounted by nut.
- Metal or plastic nut is optional.

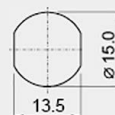
CAP

FUSE

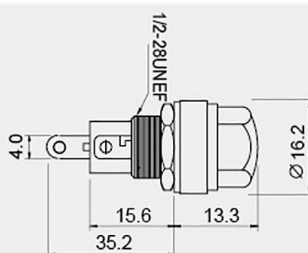
Screw type
(tool release)

\varnothing 6.35*30mm
 \varnothing 6.35*31.8mm

CUT-OUT



R3-26



(4.0mm)0.156"
Solder

10A 250V AC
 $\varnothing_{\pm 0.1}^{+0.2}$ 0.5~ 4.5mm

FEATURES:

- Material:
Frame and cap: phenolic(UL flame: 94V-1).
Terminal: nickel plated brass.
- Mounted by nut.

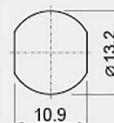
CAP

FUSE

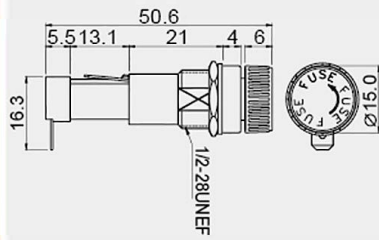
Screw type

\varnothing 5.0*20mm

CUT-OUT



R3-28A



⌋ (4.8mm)0.187"
Quick connect

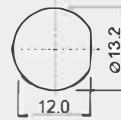
15A 250V AC
⌋ 4.5mm MAX

FEATURES:

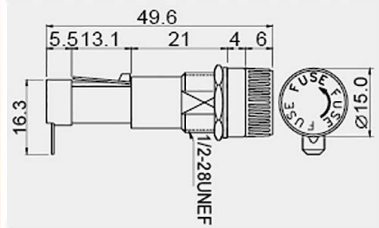
- Material:
Frame and cap: PBT(UL flame: 94V-0).
Terminal: tin plated brass.
- Mounted by nut.

CAP	FUSE
Bayonet type	\varnothing 6.35*30mm \varnothing 6.35*31.8mm

CUT-OUT



R3-28C



⌋ (4.8mm)0.187"
Quick connect

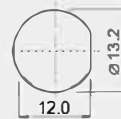
15A 250V AC
⌋ 4.5mm MAX

FEATURES:

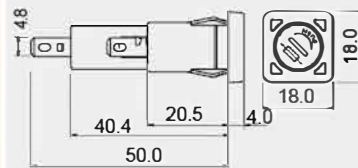
- Material:
Frame and cap: PBT(UL flame: 94V-0).
Terminal: tin plated brass.
- Mounted by nut.

CAP	FUSE
Screw type	\varnothing 6.35*30mm \varnothing 6.35*31.8mm

CUT-OUT



R3-38



⌋ (4.8mm)0.187"
Quick connect

10A 250V AC
⌋ 0.7~2.5mm

FEATURES:

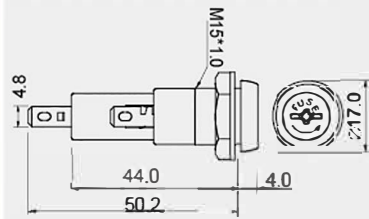
- Material:
Body: n ybn(UL flame: 94V-2).
Cap: PBT(UL flame: 94V-0).
Terminal: tin plated brass.
- Snap-in mounting, easy to install fuse holder into panel.

CAP	FUSE
Bayonet type (tool release)	\varnothing 6.35*30 mm \varnothing 6.35*31.8 mm

CUT-OUT



R3-44 A



(4.8mm)0.187"
Quick connect

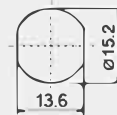
15A 250V AC
0.5~4.0mm

FEATURES:

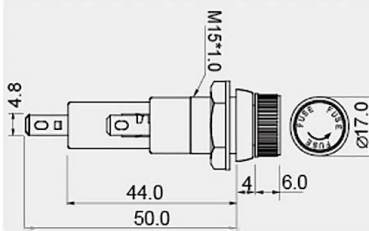
- Material:
Frame: phenolic(UL flame: 94V-1).
Cap: PBT(UL flame: 94V-0).
Terminal: tin plated brass.
- Mounted by nut.
- Metal or plastic nut is optional.

	CAP	FUSE	
A	Bayonet type (tool release)	 Ø 6.35*30mm Ø 6.35*31.8mm	
B	Bayonet type (tool release)	 Ø 5.0*20mm	
C	Screw type (tool release)	 Ø 6.35*30mm Ø 6.35*31.8mm	

CUT-OUT



R3-46 A



(4.8mm)0.187"
Quick connect

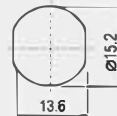
15A 250V AC
0.5~4.5mm

FEATURES:

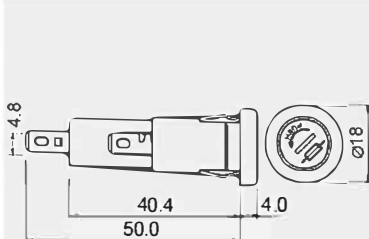
- Material:
Frame: phenolic(UL flame: 94V-1).
Cap: PBT(UL flame: 94V-0).
Terminal: tin plated brass.
- Mounted by nut.
- Metal or plastic nut is optional.

	CAP	FUSE	
A	Bayonet type	 Ø 6.35*30mm Ø 6.35*31.8mm	
B	Bayonet type	 Ø 5.0*20mm	
C	Screw type	 Ø 6.35*30mm Ø 6.35*31.8mm	

CUT-OUT



R3-49



(4.8mm)0.187"
Quick connect

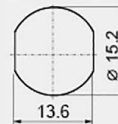
10A 250V AC
0.7~2.5mm

FEATURES:

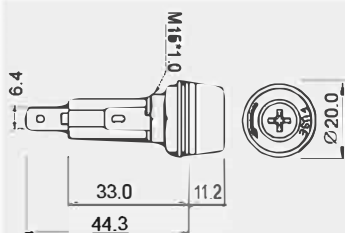
- Material:
Frame: nylon(UL flame: 94V-2).
Cap: PBT(UL flame: 94V-0).
Terminal: tin plated brass.
- Snap-in mounting, easy to install fuse holder into panel.

	CAP	FUSE	
A	Bayonet type (tool release)	 Ø 6.35*30mm Ø 6.35*31.8mm	
C	Screw type (tool release)	 Ø 6.35*30mm Ø 6.35*31.8mm	

CUT-OUT



R3-53AA



(6.4mm)0.250"
Quick connect

15A 250V AC
 0.5~3.0mm

FEATURES:

- Material:
Frame and cap: phenolic(UL flame: 94V-1).
Terminal: nickel plated copper.
- Mounted by nut.

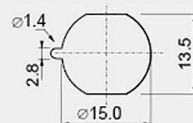
CAP

Screw type
(tool release)

FUSE

Ø 6.35*30mm
Ø 6.35*31.8mm

CUT-OUT



R3-54



(2.8mm)0.109"
Solder

10A 125V AC/6.3A 250V AC
 0.75~3.5mm

FEATURES:

- Material:
Frame and cap: nylon(UL flame: 94V-2).
Terminal: silver plated copper.
- Snap-in mounting, easy to install fuse holder into panel.

CAP

Screw type
(tool release)

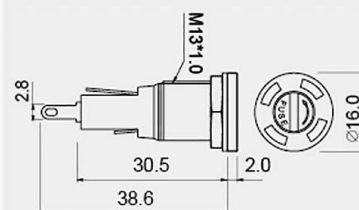
FUSE

Ø 5.0*20mm

CUT-OUT



R3-54B



(2.8mm)0.109"
Solder

10A 125V AC/6.3A 250V AC
 0.7~3.5mm

FEATURES:

- Material:
Frame and cap: nylon(UL flame: 94V-2).
Terminal: silver plated copper.
- Mounted by nut.

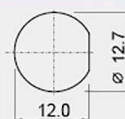
CAP

Screw type
(tool release)

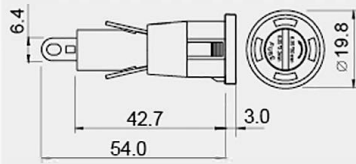
FUSE

Ø 5.0*20mm

CUT-OUT



R3-55A



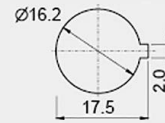
(6.4mm)0.250" 20A 250V AC
 Solder
 0.75~3.5mm

FEATURES:

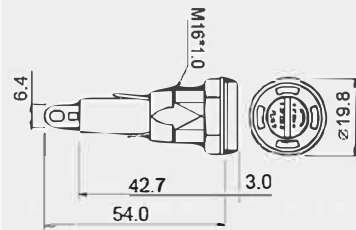
- Material:
 Frame and cap: nylon (UL flame: 94V-2).
 Terminal: silver plated copper.
- Snap-in mounting, easy to install fuse holder into panel.

CAP	FUSE
Screw type (tool release)	\varnothing 6.35*30mm \varnothing 6.35*31.8mm

CUT-OUT



R3-55B



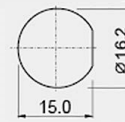
(6.4mm)0.250" 20A 250V AC
 Solder
 0.5~7.0mm

FEATURES:

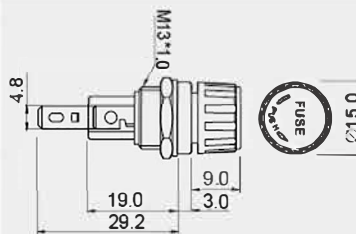
- Material:
 Frame and cap: nylon (UL flame: 94V-2).
 Terminal: silver plated copper.
- Mounted by nut.

CAP	FUSE
Screw type (tool release)	\varnothing 6.35*30mm \varnothing 6.35*31.8mm

CUT-OUT



R3-57



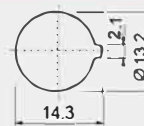
(4.8mm)0.187" 10A 250V AC
 Quick connect
 0.5~5.0mm

FEATURES:

- Material:
 Body and cap: phenolic (UL flame: 94V-1).
 Terminal: nickel plated brass.
- Mounted by nut.

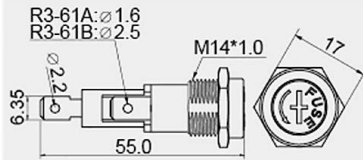
CAP	FUSE
Bayonet type	\varnothing 5.0*20mm

CUT-OUT



R3-61

IP56



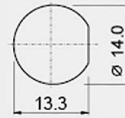
A
B

TERMINAL HOLE	CAP
$\varnothing 1.6$ mm	Screw type
$\varnothing 2.5$ mm	(tool release)

FUSE

$\varnothing 6.35 \times 30$ mm
 $\varnothing 6.35 \times 31.8$ mm

CUT-OUT



(6.4mm)0.250" Quick connect

10A 250V AC

FEATURES:

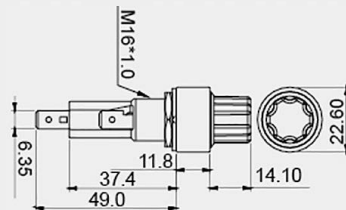
- Material:
Frame: PC (UL flame: 94V-2).
Cap: PBT (UL flame: 94V-0).
Terminal: nickel plated brass.
- Mounted by nut.

R3-63B-01-1

Waterproof / LED Warning Light

UL US

PATENT
IP66



INDICATOR LIGHT	RATING
LED	5 20A 250V AC

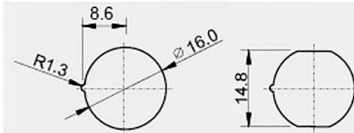
CAP

FUSE

Screw type

$\varnothing 6.35 \times 30$ mm
 $\varnothing 6.35 \times 31.8$ mm

CUT-OUT



(6.4mm)0.250" Quick connect

20A 250V AC

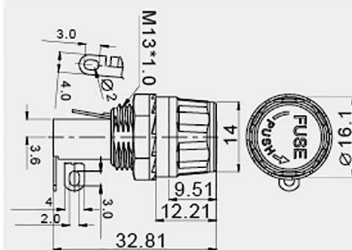
$\varnothing 0.5 \sim 10.0$ mm

FEATURES:

- Material:
Frame: phenolic (UL flame: 94V-1).
Cap: PC (UL flame: 94V-2).
Terminal: silver plated copper.
- LED indicates when fuse is broken.
- Mounted by nut.

R3-78

UL US



CAP

FUSE

Bayonet type

$\varnothing 5 \times 20$ mm

CUT-OUT



(4.0mm)0.156" Solder

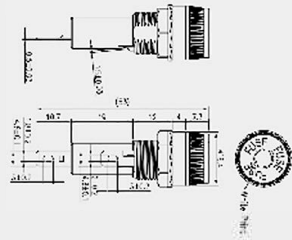
10A 250V AC

$\varnothing 0.5 \sim 4.5$ mm

FEATURES:

- Material:
Frame: phenolic (UL flame: 94V-0).
Top cover: ABS (UL flame: 94V-HB).
Cap: PBT (UL flame: 94V-0).
Terminal: tin plated brass.
- Mounted by nut.
- Color caps are optional and replaceable.

R3-93

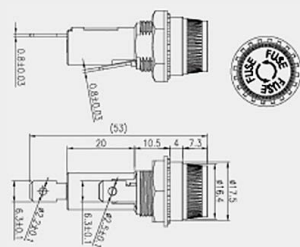


(4.8mm)0.187"
Quick connect

10A 250V AC
0.5~7.0mm

CAP	FUSE
Bayonet type	\varnothing 6.35*30mm \varnothing 6.35*31.8mm
FEATURES:	CUT-OUT
<ul style="list-style-type: none"> Material: Housing: PBT (UL flame: 94V-0). Cap: Phenolic (UL flame: 94V-1). Terminal: tin plated brass. Mounted by nut. 	

R3-107



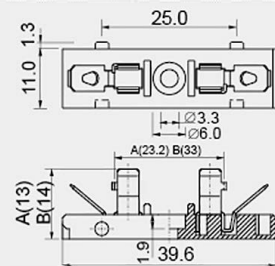
0.250" SQ
 \varnothing 13.4

20A 250V AC
0.5~3.0mm max

FUSE
\varnothing 6.35*30mm \varnothing 6.35*31.8mm

FEATURES:
• Mounted by nut.

R3-45



(4.8mm)0.187"
Quick connect

RATING	FUSE
A 8A 125/250V AC	\varnothing 5.0*20mm
B 15A 125V AC 10A 250V AC	\varnothing 6.35*30mm \varnothing 6.35*31.8mm

FEATURE:



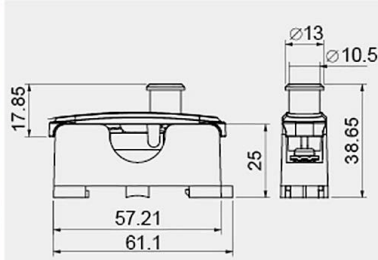
Mounted with a M3 screw

FEATURES:

- Material:
Frame: PBT(UL flame: 94V-0).
Terminal: nickel plated brass.
- This fuse holder can string array.
- Mounted by screws.

R3-62-AC

LED Warning Light



15A 125V/10A 250V AC

$\varnothing 1.0 \sim 1.2\text{mm}$

FUSE

$\varnothing 6.35 \times 30\text{mm}$

$\varnothing 6.35 \times 31.8\text{mm}$

CUT-OUT



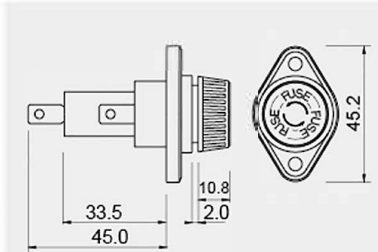
FEATURES:

- Material:
Frame: PBT(UL flame: 94V-0).
Cap: PC(UL flame: 94V-2).
- LED indicates when fuse is broken.
- Mounted by screws or snap-in.

Heavy Duty

R3-18

Heavy Duty



$\varnothing (6.4\text{mm})0.250''$
Quick connect

30A 600V AC
 $\varnothing 0.5 \sim 10\text{mm}$

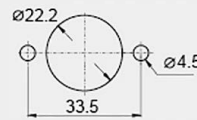
CAP

Bayonet type

FUSE

$\varnothing 10.3 \times 38.1\text{mm}$

CUT-OUT

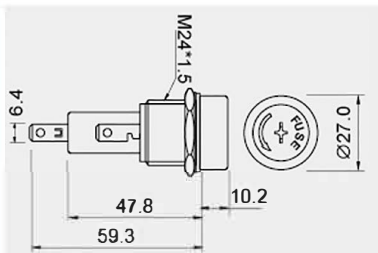


FEATURES:

- Material:
Frame and cap: phenolic(UL flame: 94V-1).
Terminal: nickel plated brass.
- Mounted by screws.

R3-41

Heavy Duty



$\varnothing (6.4\text{mm})0.250''$
Quick connect

30A 600V AC
 $\varnothing 0.5 \sim 15.5\text{mm}$

CAP

Screw type
(tool release)

FUSE

$\varnothing 10.3 \times 38.1\text{mm}$

CUT-OUT

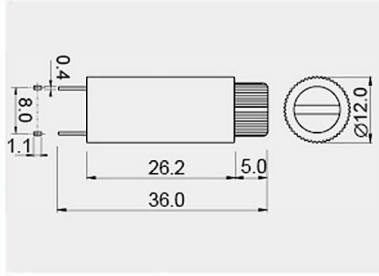


FEATURES:

- Material:
Frame and cap: phenolic(UL flame: 94V-1).
Terminal: tin plated copper.
- Mounted by nut.

R3-24

PCB Mount



\top (1.1mm)0.428" PC	10A 250V AC $\varnothing_{\pm 0.5}$ 0.5~ 4mm
----------------------------	---

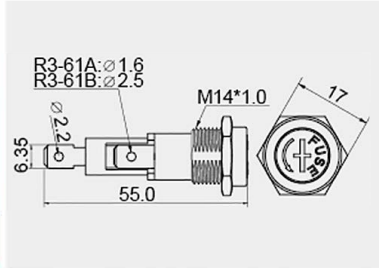
FEATURES:

- Material:
Frame: phenolic(UL flame: 94V-1).
Cap: PBT(UL flame: 94V-0).
Terminal: nickel plated brass.
- PC terminal mounted.

CAP	FUSE
Bayonet type	\varnothing 5.0*20 mm

DC Rating

R3-61



\top (6.4mm)0.250" Quick connect	10A 12V DC
---------------------------------------	------------

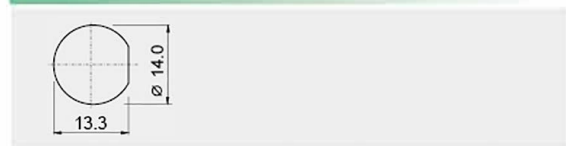
FEATURES:

- Material:
Frame: PC (UL flame: 94V-2).
Cap: PBT (UL flame: 94V-0).
Terminal: nickel plated brass.
- Mounted by nut.

TERMINAL HOLE	CAP
A \varnothing 1.6 mm	Screw type (tool release)
B \varnothing 2.5 mm	

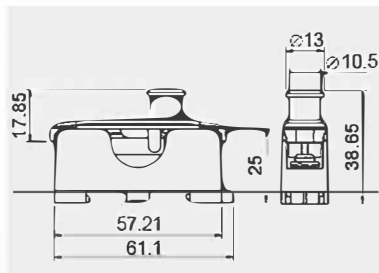
FUSE
\varnothing 6.35*30mm
\varnothing 6.35*31.8mm

CUT-OUT



R3-62-DC

LED Warning Light



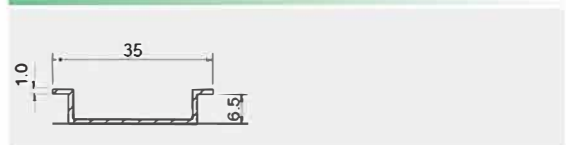
10A 12/24V DC $\varnothing_{\pm 0.5}$ 1.0~1.2mm
--

FEATURES:

- Material:
Frame: PBT(UL flame: 94V-0).
Cap: PC(UL flame: 94V-2).
- LED indicates when fuse is burned.
- Mounted by screws or snap-in.

FUSE
\varnothing 6.35*30mm
\varnothing 6.35*31.8mm

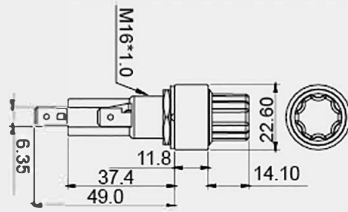
CUT-OUT



R3-63B-01-1

Waterproof / LED Warning Light

CE US



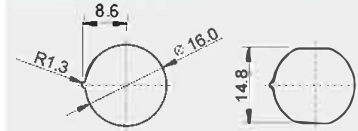
INDICATOR LIGHT	RATING
L LED	2 20A 32V DC
CAP	FUSE
Screw type	\varnothing 6.35*30mm \varnothing 6.35*31.8mm

(6.4mm)0.250" 20A 32V DC
Quick connect 0.5~10.0mm

FEATURES:

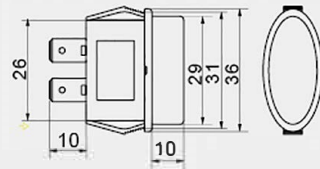
- Material:
 - Frame: phenolic(UL flame: 94V-1).
 - Cap: PC(UL flame: 94V-2).
 - Terminal: silver plated copper.
- LED indicates when fuse is broken.
- Mounted by nut.
- Waterproof.

CUT-OUT



R3-67

Heavy Duty



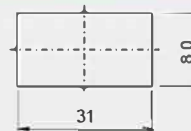
INDICATOR LIGHT	FUSE
L W/O LED	ATO BLADE FUSE
L With LED	MTA FUSE

(6.4mm)0.250" 30A 12/24V DC
Quick connect 0.5~7.0mm

FEATURES:

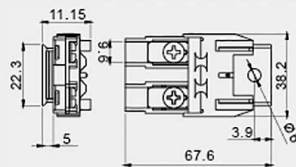
- Material:
 - Frame: nylon(UL flame: 94V-2).
 - Cap: PC(UL flame: 94V-2).
 - Terminal: tin plated brass.
- LED indicates when fuse is broken.
- Snap-in mounting, easy to install fuse holder into panel.

CUT-OUT



R3-72

Heavy Duty

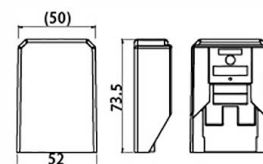


COVER	FUSE
B W/O COVER	MAXI FUSE
B With COVER	

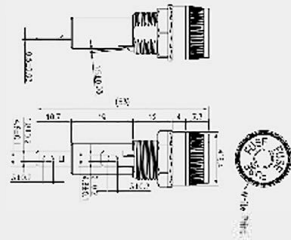
60A max 12/24/32V DC

FEATURES:

- Material:
 - Frame: nylon(UL flame: 94V-0).
 - Terminal: plated copper.
- Mounted by screws.



R3-93

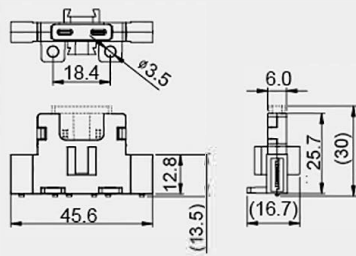


(4.8mm)0.187"
Quick connect

10A 12V DC
0.5~7.0mm

CAP	FUSE
Bayonet type	\varnothing 6.35*30mm \varnothing 6.35*31.8mm
FEATURES:	CUT-OUT
<ul style="list-style-type: none"> Material: <ul style="list-style-type: none"> Housing: PBT(UL flame: 94V-0). Cap: Phenolic(UL flame: 94V-1). Terminal: tin plated brass. Mounted by nut. 	

R3-98



(6.4mm)0.250"
Quick connect

32V DC

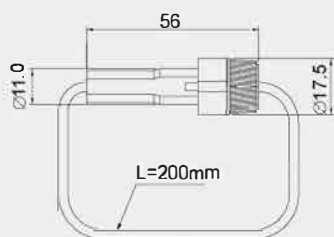
FUSE	ATO / ATC BLADE FUSE
CUT-OUT	

FEATURES:

- Material:
 - Frame: nylon(UL flame: 94V-0).
 - Terminal: brass.
- Input terminal rating: 0.25" terminal (30A max).
- Output terminal rating: 0.25" terminal (30A max).
- Side stackable for multiple block configurations.
- unavailable in UK, Netherland, Belgium and Luxemburg markets.

R3-32 A

cULus



FUSE	RATING	WIRE GAUGE
A \varnothing 5.2*20mm	1 20A 32V DC 20A 250V AC	12AWG
B \varnothing 6.35*30mm \varnothing 6.35*31.8mm	2 15A 32V DC 15A 250V AC	14AWG

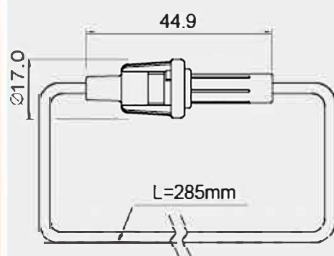
WIRE

FEATURES:

- Material:
Frame and cap: phenolic(UL flame: 94V-1).
- Wire end stripped or uncut is optional.

R3-48-11

cULus



FUSE	WIRE GAUGE	WIRE COLOR
\varnothing 5.0*20mm	D 18AWG E 20AWG	Red

WIRE

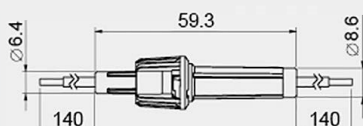
5A 250V AC

FEATURES:

- Material:
Frame: PP (T115°C).
- Wire end stripped or uncut is optional.

R3-64

cULus



FUSE	WIRE GAUGE	WIRE COLOR
\varnothing 6.35*30mm \varnothing 6.35*31.8mm	16AWG	Red

WIRE

10A 250V AC

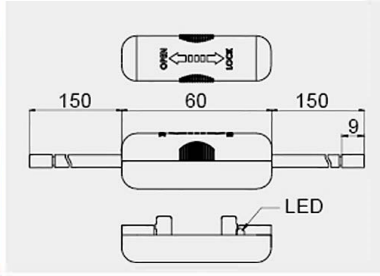
FEATURES:

- Material:
Frame and cap: PP (UL flame: 94V-0).



R3-77

LED Warning Light | Heavy Duty



FUSE	WIRE GAUGE	WIRE COLOR
∅ 6.35*31.8mm	10AWG	Red

WIRE 30A 32V DC

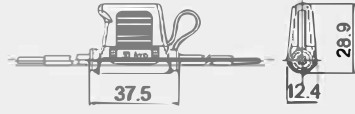
FEATURES:

- Material:
Frame: PBT (UL flame: 94V-0).
Cap: PC (UL flame: 94V-2).
- LED indicates when fuse is broken.

R3-43

Waterproof

IP55



	RATING	WIRE GAUGE	WIRE COLOR
A	30A 32V DC <i>Heavy Duty</i>	12AWG	Red
B	20A 32V DC	14AWG	Red
C	15A 32V DC	16AWG	Red
D	10A 32V DC	18AWG	Red

WIRE

FUSE

MINI BLADE FUSE

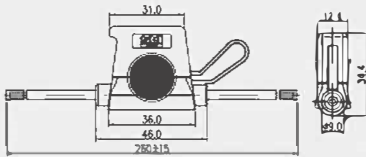
FEATURES:

- Material:
Body: PVC(T105°C).

R3-47

Waterproof

IP55



	RATING	WIRE GAUGE	WIRE COLOR
A	30A 32V DC <i>Heavy Duty</i>	12AWG	Red
B	20A 32V DC	14AWG	Red
C	15A 32V DC	16AWG	Red
D	10A 32V DC	18AWG	Red

WIRE

FUSE

ATO/ATC BLADE FUSE

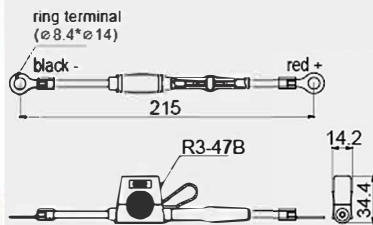
FEATURES:

- Material:
Body: PVC(T105°C).

R3-47P

Fuse Holder With Surge Protector

IP55



FEATURES:

- Material:
Body: PVC(T105°C).
- Wire: #14AWG.
- Dual protection.
- Designed to act as a sacrificial pathway to ground in the event of a voltage spike.
- Transient spike protector directs damaging voltage away from the alternator's diodes and allows it to dissipate through system ground.
- Protect electronic devices by transient surge absorbers.

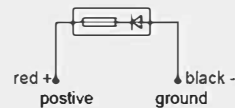
WIRE

10A 12V DC

FUSE

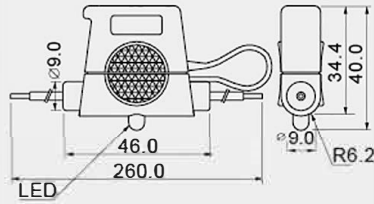
ATO/ATC BLADE FUSE

CIRCUIT DIAGRAM



R3-59

Waterproof / LED Warning Light



	RATING	WIRE GAUGE	WIRE COLOR
A	30A 12V/24V DC	12AWG	Red
B	20A 12V/24V DC	14AWG	Red
C	15A 12V/24V DC	16AWG	Red
D	10A 12V/24V DC	18AWG	Red

WIRE

FUSE

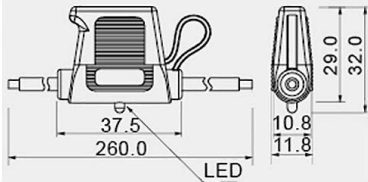
ATO/ATC BLADE FUSE

FEATURES:

- Material: Body: PVC(T105°C).
- LED indicates when fuse is broken.
- Waterproof.
- None polarity limited.

R3-60

Waterproof / LED Warning Light



	RATING	WIRE GAUGE	WIRE COLOR
A	30A 12V/24V DC	12AWG	Red
B	20A 12V/24V DC	14AWG	Red
C	15A 12V/24V DC	16AWG	Red
D	10A 12V/24V DC	18AWG	Red

WIRE

FUSE

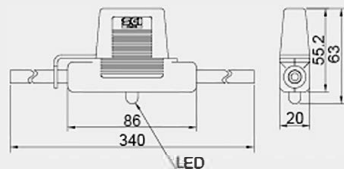
MINI BLADE FUSE

FEATURES:

- Material: Body: PVC(T105°C).
- LED indicates when fuse is broken.
- Waterproof.
- None polarity limited.

R3-65

Waterproof / LED Warning Light



	INDICATOR LIGHT	WIRE GAUGE	WIRE COLOR
W / O LED		6AWG	Red
W / LED		6AWG	Red

WIRE

60A max 12/24V DC

FUSE

ATO/ATC BLADE FUSE

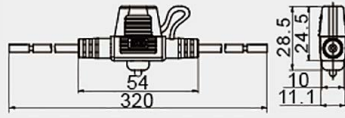


FEATURES:

- Material: Body: PVC(T105°C).
- LED indicates when fuse is broken.
- Waterproof.

R3-90

Waterproof / LED Warning Light



WIRE

FUSE



MICRO2 BLADE FUSE

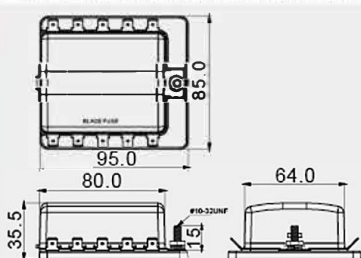
FEATURES:

- Material:
Body: PVC(T105°C).
- LED indicates when fuse is broken.

	RATING	INDICATOR LIGHT	WIRE GAUGE & COLOR
A	30A 32V DC <i>Heavy Duty</i>	W/O LED	A 12AWG & Red
B	20A 32V DC	L With LED	B 14AWG & Red
C	15A 32V DC		C 16AWG & Red
D	10A 32V DC		D 18AWG & Red
A	30A 12/24V DC <i>Heavy Duty</i>		
B	20A 12/24V DC		
C	15A 12/24V DC		
D	10A 12/24V DC		



R3-76- -3 1 LED Warning Light



TERMINAL
0 1 (6.4mm)0.250" Quick connect
0 7 SC 4 (M4 Screws)

INDICATOR LIGHT
With LED
W/O LED

POSITIONS	CUT-OUT
0 4	
0 6	
1 0	

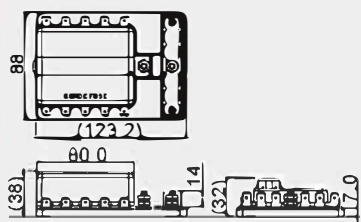
32V DC max
 ATO/ATC BLADE FUSE

FEATURES:

- Material:
 - Base: PBT (UL flame: 94V-0).
 - Cap: PC (UL flame: 94V-2).
 - Terminal: tin plated brass.
- Input terminal rating: #10-32 threaded studs (100A. max.)
- Output terminal rating: 30A max per circuit.
- Connection pad option available.
- Input wire size: #4-6 AWG.
- Output wire size: #12-16 AWG.
- Torque rating: 20in-lb (2.25 Nm) max.
- Mounting torque rating: 8in-lb (0.9Nm) max.
- Red LED indicates when fuse is broken.
- Identify circuits by foot print marking.
- Clear insulating cover design for water and dust proof.
- Easy to open by pressing the latch.



R3-76B-01-3 1 LED Warning Light | Negative busbar



INDICATOR LIGHT
With LED
W/O LED

POSITIONS	CUT-OUT
0 4	
0 6	
1 0	

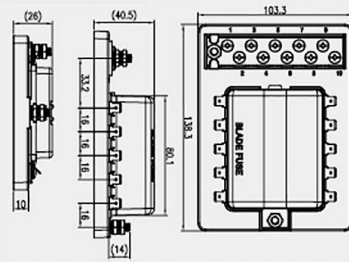
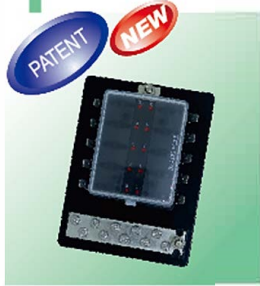
(6.4mm)0.250" Quick connect
 32V DC max
 ATO/ATC BLADE FUSE

FEATURES:

- Material:
 - Base: PBT (UL flame: 94V-0).
 - Cap: PC (UL flame: 94V-2).
 - Terminal: tin plated copper.
- Input terminal rating: M5 threaded studs (100A. max.)
- Output terminal rating: 30A max per circuit.
- Connection pad option available.
- Input wire size: #4-6 AWG.
- Output wire size: #12-16 AWG.
- Torque rating: 20in-lb (2.25 Nm) max.
- Mounting torque rating: 8in-lb (0.9Nm) max.
- Red LED indicates when fuse is broken.
- Identify circuits by foot print marking.
- Negative bus provides common location for negative collection circuit.
- Clear insulating cover design for water and dust proof.
- Easy to open by pressing the latch.



R3-76B-01-07-3 1 LED Warning Light | Negative busbar



INDICATOR LIGHT	POSITIONS	CUT-OUT
L With LED 	0 6 	
	1 0 	

(6.4mm)0.250"
Quick connect

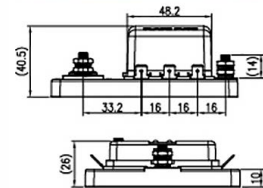
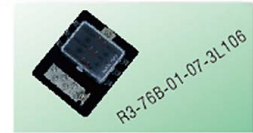
32V DC max

FUSE

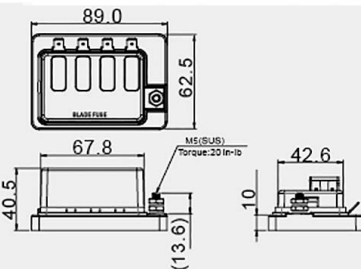
ATO/ATC BLADE FUSE

FEATURES:

- Material:
 - Base: PBT (UL flame: 94V-0).
 - Cap: PC (UL flame: 94V-2).
 - Terminal: tin plated copper.
- Input terminal rating: M5 threaded studs (100A. max.)
- Output terminal rating: 30A max per circuit.
- Connection pad option available.
- Input wire size: #4-6 AWG.
- Output wire size: #12-16 AWG.
- Torque rating: 20in-lb (2.25 Nm) max.
- Mounting torque rating: 8in-lb (0.9Nm) max.
- Red LED indicates when fuse is broken.
- Identify circuits by foot print marking.
- Negative bus provides common location for negative collection circuit.
- Clear insulating cover design for water and dust proof.
- Easy to open by pressing the latch.
- Unavailable in US market



R3-76C- -3 1 LED Warning Light | Single Side Design



TERMINAL	INDICATOR LIGHT	POSITIONS	CUT-OUT
0 1 (6.4mm)0.250" Quick connect 	L With LED 	0 4 	
0 7 SC 4 (M4 Screws)	W/O LED 	0 6 	
		1 0 	

32V DC max

FUSE

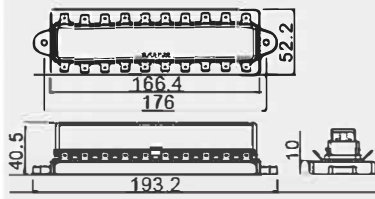
ATO/ATC BLADE FUSE

FEATURES:

- Material:
 - Base: PBT (UL flame: 94V-0).
 - Cap: PC (UL flame: 94V-2).
 - Terminal: tin plated brass.
- Input terminal rating: M5 threaded studs (100A. max.)
- Output terminal rating: 30A max per circuit.
- Connection pad option available.
- Input wire size: #4-6 AWG.
- Output wire size: #12-16 AWG.
- Torque rating: 20in-lb (2.25 Nm) max.
- Mounting torque rating: 8in-lb (0.9Nm) max.
- Red LED indicates when fuse is broken.
- Identify circuits by foot print marking.
- Single side design for easy wire entry.
- Clear insulating cover design for water and dust proof.
- Easy to open by pressing the latch.

R3-76D-3 1 **Single Side Design**

NEW



TERMINAL	POSITIONS	CUT-OUT
0 1 (6.4mm)0.250" Quick connect 0 7 SC 4 (M4 Screws)	0 4 	
	0 6 	
	1 0 	

32V DC max

FUSE

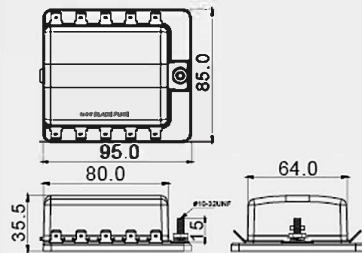
ATO/ATC BLADE FUSE

FEATURES:

- Material:
 Base: PBT (UL flame: 94V-0).
 Cap: PC (UL flame: 94V-2).
 Terminal: tin plated copper.
- Input terminal rating: #10-30 threaded studs (100A. max.)
- Output terminal rating:
 Terminal wire size: #10 AWG
- Fuse insertion rating: 17Lb (76N) max.
- Fuse withdrawal forces rating: 17Lb (76N) max.
- Identify circuits by foot print marking.
- Single side design for easy wire entry.
- Clear insulating cover design for water and dust proof.
- Easy to open by pressing the latch.

R3-79-01-1 3 **LED Warning Light | Mini Blade Fuse**

PATENT



INDICATOR LIGHT	POSITIONS	CUT-OUT
L With LED W/O LED	0 4 	
	0 6 	
	1 0 	

(6.4mm)0.250"
 Quick connect

32V DC max

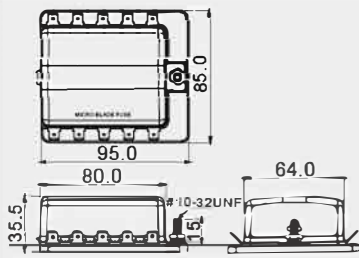
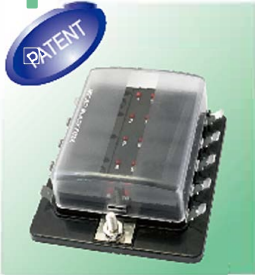
FUSE

MINI BLADE FUSE

FEATURES:

- Material:
 Base: PBT (UL flame: 94V-0).
 Cap: PC (UL flame: 94V-2).
 Terminal: tin plated brass.
- Input terminal rating: #10-32 threaded studs (100A. max.)
- Output terminal rating: 30A max per circuit.
- Connection pad option available.
- Input wire size: #4-6 AWG.
- Output wire size: #12-16 AWG.
- Torque rating: 20in-lb (2.25 Nm) max.
- Mounting torque rating: 8in-lb (0.9Nm) max.
- Red LED indicates when fuse is broken.
- Identify circuits by foot print marking.
- Clear insulating cover design for water and dust proof.
- Easy to open by pressing the latch.

R3-80-01-1 310 LED Warning Light / Micro Blade Fuse

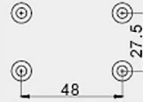


INDICATOR LIGHT

With LED

W/O LED

CUT-OUT



(6.4mm)0.250" Quick connect

32V DC max

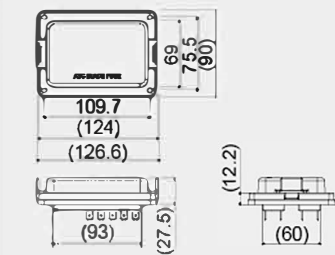
FUSE

LOW PROFILE MINI FUSE

FEATURES:

- Material:
 - Base: PBT (UL flame: 94V-0).
 - Cap: PC (UL flame: 94V-2).
 - Terminal: tin plated brass.
- Input terminal rating: #10-32 threaded studs (100A max)
- Output terminal rating: 30A max per circuit.
- Connection pad option available.
- Input wire size: #4-6 AWG.
- Output wire size: #12-16 AWG.
- Torque rating: 20in-lb (2.25 Nm) max.
- Mounting torque rating: 8in-lb (0.9Nm) max.
- Red LED indicates when fuse is broken.
- Identify circuits by foot print marking.
- Clear insulating cover design for water and dust proof.
- Easy to open by pressing the latch.

R3-82-01-1 310 Waterproof / ATC Blade Fuse



INDICATOR LIGHT

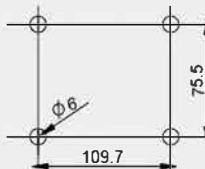
With LED

W/O LED

CIRCUIT DIAGRAM



CUT-OUT



(6.4mm)0.250" Quick connect

32V DC max

FUSE

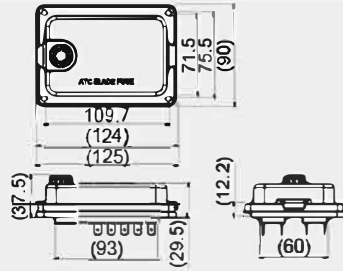
ATO/ATC BLADE FUSE

FEATURES:

- Material:
 - Base: PBT (UL flame: 94V-0).
 - Cap: PC (UL flame: 94V-2).
 - Terminal: nickel plated brass.
- Wire size: #10-16 AWG.
- Mounting torque rating: 8in-lb (0.9 Nm) max.
- Output terminal rating: 25A max per circuit.
- Red LED indicates when fuse is broken.
- Insulating cover design for water and dust proof.
- Easy to open by pressing the latch.
- Circuit Diagram x 10 sets

R3-83-01-1 310 **Waterproof / ATC Blade Fuse**

IP56

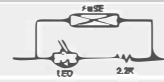


INDICATOR LIGHT

With LED

W/O LED

CIRCUIT DIAGRAM



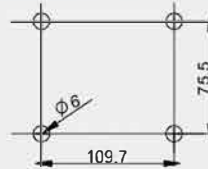
(6.4mm)0.250" Quick connect

32V DC max

FUSE

ATO/ATC BLADE FUSE

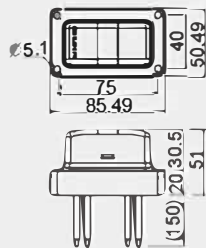
CUT-OUT



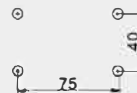
FEATURES:

- Material:
 - Base: PBT (UL flame: 94V-0).
 - Cap: PC (UL flame: 94V-2).
 - Terminal: nickel plated brass.
- Wire size: #10-16 AWG.
- Mounting torque rating: 8in-lb (0.9 Nm) max.
- Output terminal rating: 25A max per circuit.
- Red LED indicates when fuse is broken.
- Insulating cover design for dust proof.
- Circuit Diagram x 10 sets

R3-94-11-3104



CUT-OUT



WIRE

32V DC max

FUSE

MINI BLADE FUSE

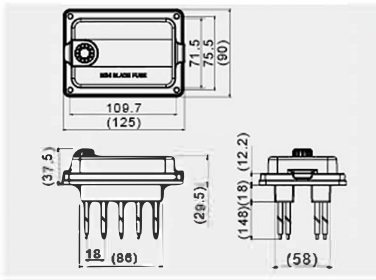
FEATURES:

- Material:
 - Base: PBT (UL flame: 94V-0).
 - Cap: PC (UL flame: 94V-2).
 - Terminal: tin plated brass.
- Output terminal rating: 20A max per circuit.
- Insulating cover design for dust proof.
- Easy to open by pressing the latch.
- Wire size: #14 AWG.

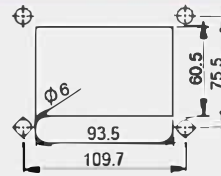
R3-95-11-4110

Waterproof

IP56



CUT-OUT



CIRCUIT DIAGRAM



WIRE

32V DC max

FUSE

MINI BLADE FUSE

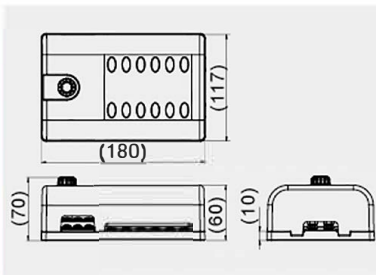
FEATURES:

- Material:
 - Base: PBT (UL flame: 94V-0).
 - Cap: PC (UL flame: 94V-2).
- Wire size: #12 AWG.
- Output terminal rating: 20A max per circuit.
- Insulating cover design for water and dust proof.
- Easy to open by pressing the latch.
- Circuit Diagram x 10 sets

R3-96-07-3

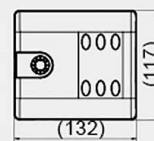
1

LED Warning Light

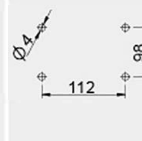


POSITIONS

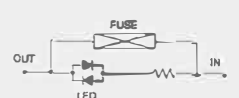
0 6



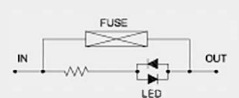
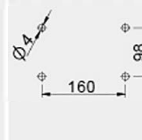
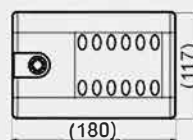
CUT-OUT



CIRCUIT DIAGRAM



1 2



0 7 SC 4
(M4 Screws)

32V DC max

FUSE

ATO/ATC BLADE FUSE

FEATURES:

- Material:
 - Base: PBT (UL flame: 94V-0).
 - Cap: PC (UL flame: 94V-2).
 - Terminal: tin plated brass.
- Input terminal rating: #10-32 threaded studs (100A . max)
- Output terminal rating: 30A max per circuit.
- Connection pad option available.
- Input wire size: #4-6 AWG.
- Output wire size: #12-16 AWG.
- Mounting torque rating: 8in-lb (0.9Nm) max.
- Red LED indicates when fuse is broken.
- Identify circuits by foot print marking.
- Insulating cover design for dust proof.
- Easy to open by pressing the latch.
- Circuit Diagram x 2 sets

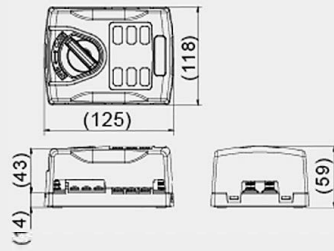
INDICATOR LIGHT

L With LED

W/O LED

R3-97-07-3 1

NEW



POSITIONS	CUT-OUT	CIRCUIT DIAGRAM
0 6 		
1 2 		

0 7 SC 4
(M4 Screws)

32V DC max

FUSE

ATO/ATC BLADE FUSE

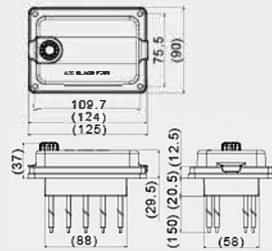
FEATURES:

- Material:
Housing & base: PBT (UL flame: 94V-0).
Cap: PC (UL flame: 94V-2).
Terminal: tin plated copper.
- Output terminal rating: 30A max per circuit.
- Connection pad option available-
Input wire size: #4-6 AWG.
Output wire size: #12-16 AWG.
- Torque rating: 20 in-lb (2.25Nm) max.
- Mounting torque rating: 8 in-lb (0.9Nm) max.
- Circuit Diagram x 2sets

R3-100-11-3110

Waterproof

IP56



CUT-OUT	CIRCUIT DIAGRAM

WIRE

32V DC max

FUSE

ATO/ATC BLADE FUSE

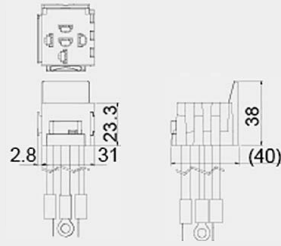
FEATURES:

- Material:
Base: PBT (UL flame: 94V-0).
Cap: PC (UL flame: 94V-2).
- Output terminal rating: 20A max per circuit.
- Wire size: #12 AWG.
- Connection wire option available.
- Identify circuits by foot print marking.
- Insulating cover design for dust and waterproof.
- Easy to open by pressing the latch.
- Circuit Diagram x 10 sets

R3-101

Stackable Relay Block

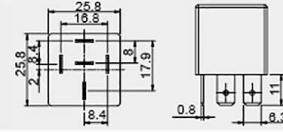
NEW



FEATURES:

- Material:
Frame: nylon with glass fiber.

RELAY DIM



WIRE

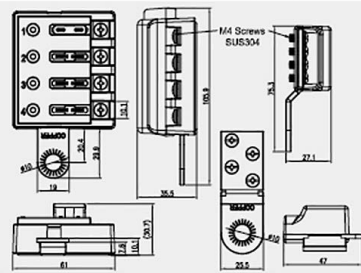
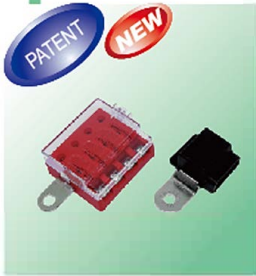
12V/24V DC

***This Relay Block could string array.**



R3-108-07-3 104

BLADE FUSE BOX



INDICATOR LIGHT

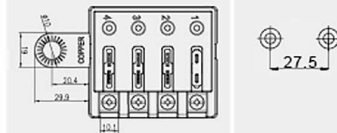
- With LED
- W/O LED

TERMINAL

SC 4 (M4 Screws)

POSITIONS

CUT-OUT



32V DC max

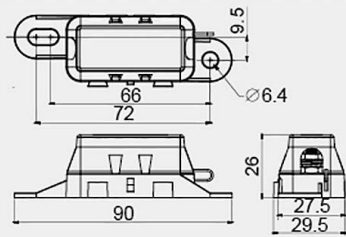
FUSE

ATO/ATC BLADE FUSE

FEATURES:

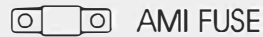
- Material:
Base: PBT (UL flame: 94V-0).
Cap: PC (UL flame: 94V-2).
Terminal: tin plated cooper.
- Input terminal rating: #10-32 threaded studs (100A. max.)
- Output terminal rating: 30A max per circuit.
- Connection pad option available.
- Input wire size: #4-6 AWG.
- Output wire size: #12-16 AWG.
- Torque rating: 20in-lb (2.25 Nm) max.
- Mounting torque rating: 8in-lb (0.9Nm) max.
- Red LED indicates when fuse is broken.
- Identify circuits by foot print marking.
- Clear insulating cover design for water and dust proof.
- Easy to open by pressing the latch.

R3-81-03F-83



32V DC, 30A~100A (max.)

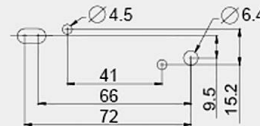
FUSE



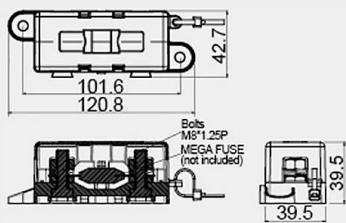
FEATURES:

- Material:
Cover: nylon (UL flame: 94V-2).
Housing: PBT (UL flame: 94V-0).
- Wire size: #2-8 AWG.
- Termination: M5 threaded studs and hex nuts for fuse mounting.
- Torque rating: 20in-lb (2.25 Nm) max.
- Mounting torque rating: 44in-lb (5 Nm) max.
- Side stackable for multiple block configurations.

CUT-OUT



R3-91-03F-83



32V DC, 40A~275A (max.)

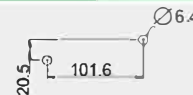
FUSE



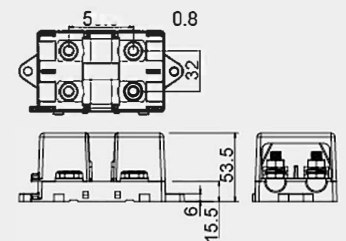
FEATURES:

- Material:
Cover: nylon (UL flame: 94V-2).
Housing: PBT (UL flame: 94V-0).
- Wire size: #2-8 AWG.
- Termination: M8 threaded studs and hex nuts for fuse mounting.
- Torque rating: 20in-lb (2.25 Nm) max.
- Mounting torque rating: 12-18Nm max.
- Side stackable for multiple block configurations.

CUT-OUT



R3-103



32V DC, 40A~400A
(max at each circuit.)

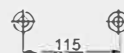
FUSE



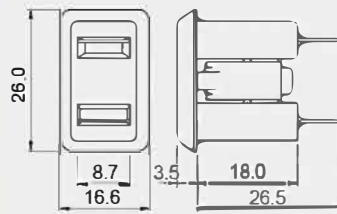
FEATURES:

- Material:
Cover: PBT.
Housing: nylon.
Screw: Ni plated steel studs.
- M8 threaded studs and hex nut for fuse mounting.
- Torque rating: 20in-lb (2.25 Nm) max.
- Mounting torque rating: 12-18Nm max. M8 screws with washers.
- unavailable in UK, Netherland, Belgium and Luxemburg markets.

CUT-OUT



R7-21



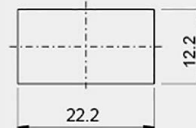
(4.0mm)0.156" Solder

15A 125V AC
DC500V 100M Ω
AC 1500V

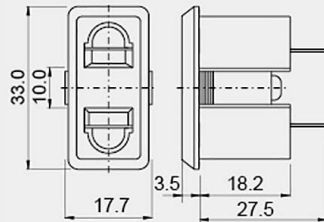
FEATURES:

- Material:
Housing: phenolic.
Contact: nickel plated brass.
- Snap-in mounting, easy to install receptacle to panel.
- Fit flat plug.

CUT-OUT



R7-22



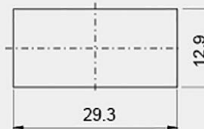
(4.0mm)0.156" Solder

15A 125V AC
DC500V 100M Ω
AC 1500V

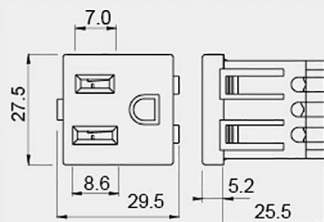
FEATURES:

- Material:
Housing: phenolic.
Contact: nickel plated brass.
- Snap-in mounting, easy to install receptacle to panel.
- Fit flat and round plugs.

CUT-OUT



R7-23



15A 125V AC
DC500V 100M Ω
AC 1500V

FEATURES:

- Material:
Housing: phenolic.
Contact: nickel plated brass.
- Snap-in mounting, easy to install receptacle to panel.
- Fit North American NEMA5-15R receptacles (with grounding).

CUT-OUT





FUSE HOLDERS



MODEL NO.	TYPE	FUSE TYPE	UL	CUL	VDE	RATING	TERMINAL TYPE	PAGE
R3-9	A,C,CO	∅ 6.35*30mm ∅ 6.35*31.8mm		●		15A 250V AC	Quick connect	1
	-,B	∅ 5.0*20mm		●		10A 250V AC		
R3-11	-,B	∅ 5.0*20mm		●		10A 250V AC	Solder	1
R3-12	E	∅ 5.0*20mm		●		10A 250V AC	Solder	1
				●		10A 250V AC	Solder	2
R3-13	-	∅ 6.35*30mm ∅ 6.35*31.8mm		●		10A 250V AC	Quick connect, Solder	2
	E			●				
R3-14	A	∅ 6.35*30mm		●		10A 250V AC	Solder	3
	C,D	∅ 6.35*31.8mm		●			Quick connect	
	A2			●		30A 250V AC	Solder	
R3-18	-	∅ 10.3*38.1mm		●		30A 600V AC	Quick connect	11
R3-21	A	∅ 6.35*30mm		●		10A 250V AC	Solder	4
R3-22	A	∅ 6.35*30mm ∅ 6.35*31.8mm		●		10A 250V AC	Quick connect	4
R3-24	-	∅ 5.0*20mm		●		10A 250V AC	PC	12
R3-26	-	∅ 5.0*20mm		●		10A 250V AC	Solder	4
R3-28	A,C	∅ 6.35*30mm ∅ 6.35*31.8mm		●		15A 250V AC	Quick connect	5
R3-38	-	∅ 6.35*30mm ∅ 6.35*31.8mm		●		10A 250V AC	Quick connect	5
R3-41	-	∅ 10.3*38.1mm		●		30A 600V AC	Quick connect	11
R3-44	AA,CA	∅ 6.35*30mm ∅ 6.35*31.8mm		●		15A 250V AC	Quick connect	6
	BA	∅ 5.0*20mm		●				
R3-45	A	∅ 5.0*20mm		●		8A 125V AC 8A 250V AC	Quick connect	10
	B	∅ 6.35*30mm ∅ 6.35*31.8mm		●		15A 125V AC 10A 250V AC		
R3-46	AA,CA	∅ 6.35*30mm ∅ 6.35*31.8mm		●		15A 250V AC	Quick connect	6
	BA	∅ 5.0*20mm		●				
R3-49	A,C	∅ 6.35*30mm ∅ 6.35*31.8mm		●		10A 250V AC	Quick connect	6
R3-53	AA	∅ 6.35*30mm ∅ 6.35*31.8mm		●		15A 250V AC	Quick connect	7
R3-54	-,B	∅ 5.0*20mm		●	●	10A 125V AC 6.3A 250V AC	Solder	7
R3-55	A,B	∅ 6.35*30mm ∅ 6.35*31.8mm		●		20A 250V AC	Solder	8
R3-57	-	∅ 5.0*20mm				10A 250V AC	Quick connect	8
R3-61	-	∅ 6.35*30mm ∅ 6.35*31.8mm				10A 250V AC 10A 12V DC	Quick connect	9 12
R3-62	AC	∅ 6.35*30mm				15A 125V AC/10A 250V AC		11
	DC	∅ 6.35*31.8mm				10A 12V/24V DC		12
R3-63B-01-1	N	∅ 6.35*30mm		●		20A 250V AC	Quick connect	9
	L	∅ 6.35*31.8mm				20A 32V DC		13
R3-67	-,L	ATO/ATC MTA FUSE				30A 12V/24V DC	Quick connect	13
R3-72	-	MAXI FUSE				60A max 12/24/32V DC		13
R3-78	-	∅ 5.0*20mm		●		10A 250V AC	Solder	9
R3-93	-	∅ 6.35*30mm ∅ 6.35*31.8mm				10A 250V AC 10A 12V DC	Quick connect	10 14
R3-98	-	ATO/ATC BLADE FUSE				32V DC	Quick connect	14
R3-107	-	∅ 6.35*30mm ∅ 6.35*31.8mm				20A 250V AC	Quick connect	10



IN-LINE FUSE HOLDERS



MODEL NO.	TYPE	FUSE TYPE	UL	CUL	VDE	RATING	TERMINAL TYPE	PAGE
R3-32	AA1,BA1	⌀ 5.2*20mm		●		20A 32V DC/20A 250V AC	WIRE:12AWG	15
	AA2,BA2	⌀ 6.35*30mm ⌀ 6.35*31.8mm			15A 32V DC/ 15A 250V AC	WIRE:14AWG		
R3-43	A,B,C,D	MINI BLADE FUSE				30A/20A/15A/10A 32V DC	WIRE: 12/14/16/18AWG	17
R3-47	A,B,C,D	ATO/ATC BLADE FUSE				30A/20A/15A/10A 32V DC	WIRE: 12/14/16/18AWG	17
R3-47	P	ATO/ATC BLADE FUSE				10A 12V DC	WIRE: 14AWG	17
R3-48-11	D,E	⌀ 5.0*20mm		●		5A 250V AC	WIRE:18AWG WIRE: 20AWG	15
R3-59	A,B,C,D	ATO/ATC BLADE FUSE				30A/20A/15A/10A 12/24V DC	WIRE: 12/14/16/18AWG	18
R3-60	A,B,C,D	MINI BLADE FUSE				30A/20A/15A/10A 12/24V DC	WIRE: 12/14/16/18AWG	18
R3-64		⌀ 6.35*30mm ⌀ 6.35*31.8mm		●		10A 250V AC	WIRE:16AWG	15
R3-65	-,L	ATO/ATC BLADE FUSE				20A-60A 12/24V DC	WIRE:6AWG	18
R3-77		⌀ 6.35*31.8 mm				30A 32V DC	WIRE:10AWG	16
R3-90	-,L	MICRO2 BLADE FUSE				30A/20A/15A/10A 32V DC 30A/20A/15A/10A 12/24V DC	WIRE: 12/14/16/18AWG	19

FUSE BLOCKS



MODEL NO.	TYPE	FUSE TYPE	UL	CUL	VDE	RATING	TERMINAL TYPE	PAGE
R3-76	01	ATO/ATC BLADE FUSE				32C DC max	Quick connect	20
	07							
R3-76B-01	-,L	ATO/ATC BLADE FUSE				32C DC max	Quick connect	20
R3-76B-01-07	-,L	ATO/ATC BLADE FUSE				32C DC max	Quick connect	21
R3-76C	01	ATO/ATC BLADE FUSE				32C DC max	Quick connect	21
	07						M4 screws	21
R3-76D	01	ATO/ATC BLADE FUSE				32C DC max	Quick connect	22
	07						M4 screws	22
R3-79-01	-,L	MINI BLADE FUSE				32C DC max	Quick connect	22
R3-80-01	-,L	LOW PROFILE MINI FUSE				32C DC max	Quick connect	23
R3-82-01	-,L	ATO/ATC BLADE FUSE				32C DC max	Quick connect	23
R3-83-01	-,L	ATO/ATC BLADE FUSE				32C DC max	Quick connect	24
R3-94-11-3104	-	MINI BLADE FUSE				32C DC max	WIRE:14AWG	24
R3-95-11-4110	-	MINI BLADE FUSE				32C DC max	WIRE:12AWG	25
R3-96-07	-,L	ATO/ATC BLADE FUSE				32C DC max	M4 screws	25
R3-97-07	06	ATO/ATC BLADE FUSE				32C DC max	M4 screws	26
	12							26
R3-100-11-3110	-	ATO/ATC BLADE FUSE				32C DC max	WIRE:12AWG	26
R3-101	-,L	ATO/ATC BLADE FUSE				12V/24V DC	M4 screws	27
R3-108	-,L	ATO/ATC BLADE FUSE				12V/24V DC	M4 screws	27



AUTOMOTIVE BOLT-IN FUSE HOLDERS



MODEL NO.	TYPE	FUSE TYPE	UL	CUL	VDE	RATING	TERMINAL TYPE	PAGE
R3-81-03F-83		AMI FUSE				32V DC		28
R3-91-03F-83		MEGA FUSE				32V DC		28
R3-103		MEGA FUSE				32V DC		28

RECEPTACLES



MODEL NO.	TYPE	UL	CUL	VDE	RATING	TERMINAL TYPE	PAGE
R7-21					15A 125V AC	Solder	29
R7-22					15A 125V AC	Solder	29
R7-23					15A 125V AC		29