

Datasheet | EA01 DC filter

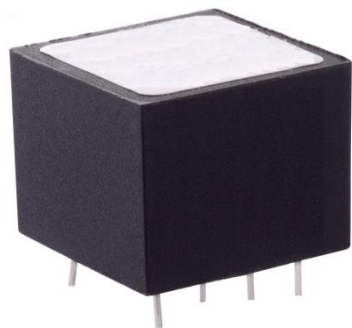
EP-402 Series



El.italia EC-EA01 [EP-402] serie

General Purpose DC EMI Filter

Conformance



Technical specifications

Operating voltage	12 VDC
Current rating	6A
Voltage drop	1 Volt max.
High potential test voltage	+, - to E 1500VAC
Insulation resistance	$\geq 300 \text{ M}\Omega$ @ 500VDC (+, - to E)
Operating temperature	40°C / -25°C +85°C

*Image shown is for illustrative purpose only

Features and benefit:

- | All filters provide high attenuation performance.
- | All filters compliance to EN60939-3:2015 & EN60939- 2:2005 standards.
- | Compact PCB-mountable design.
- | High reliable.
- | Plastic housing with good aesthetic.
- | Single stage.
- | Input and output connection through soldering pins.
- | Cost effective solution.

Attenuation Type:

Single Stage

Standard

Application:

- | Modems
- | Network Routing Equipment
- | Servers
- | Ethernet Hubs
- | Base Stations
- | Power Supplies
- | Photovoltaic Inverters
- | DC Motor Drives
- | DC Chargers
- | Frequency Inverters
- | Energy Systems

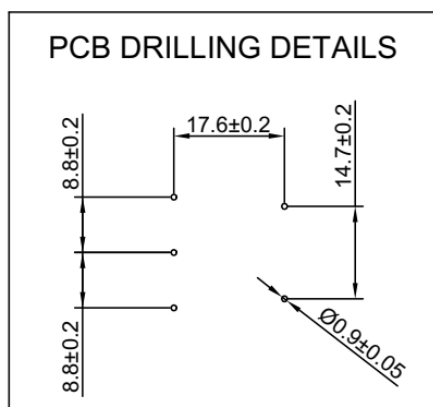
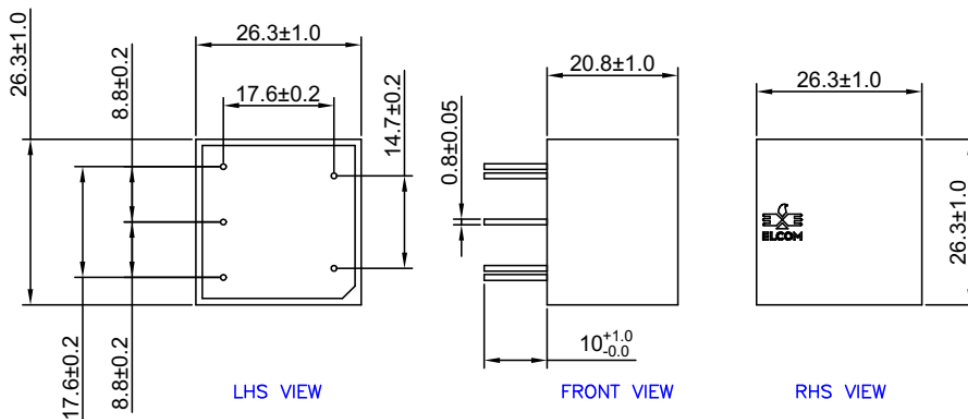
Datasheet | EA01 DC filter

EP-402 Series



El.italia EC-EA01 [EP-402] serie

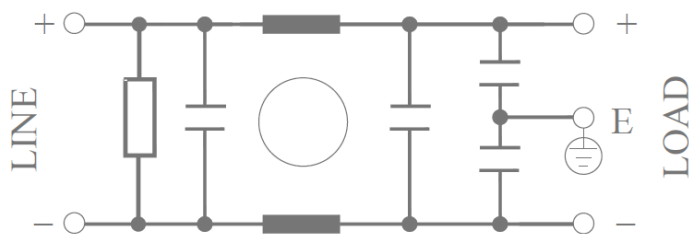
Electrical schematic for Filter



*All dimensions are in mm.

Note: For medical application filter, earthing terminal is not provided.

Electrical schematic for Filter





Datasheet | EA01 DC filter

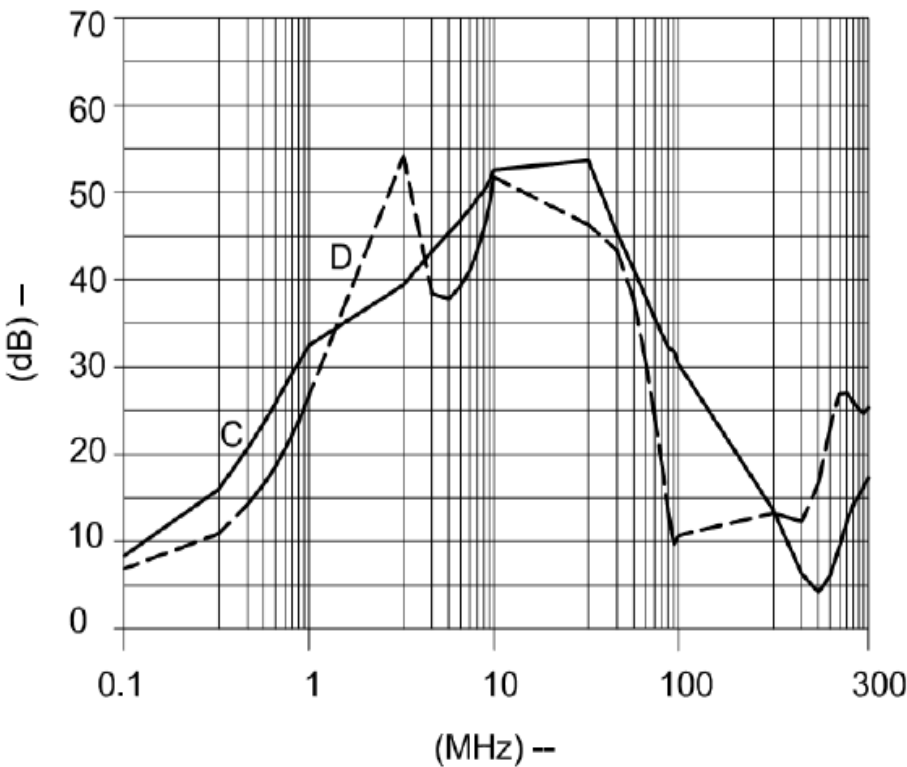
EP-402 Series



El.italia EC-EA01 [EP-402] serie

Filter attenuation Graph

C = Common mode (asymmetrical) _____
D = Differential mode (symmetrical) -----



Filter Selection Table –

Sr. No.	Elcom part codes (ordering code)	Rated Current rating (A) @40°C	Pin-type terminal	Approx. weight (gm)	Attenuation
1	EF-4A006A01G-A01	6	A	25	Standard

- Customize products provided on request.



Datasheet | EA01 DC filter

EP-402 Series

El.italia EC-EA01 [EP-402] serie

Connection Type

Current Rating (A)	Connection
6	Pin type terminal

Syntax

EF – 4A CCC X YY G – A01

