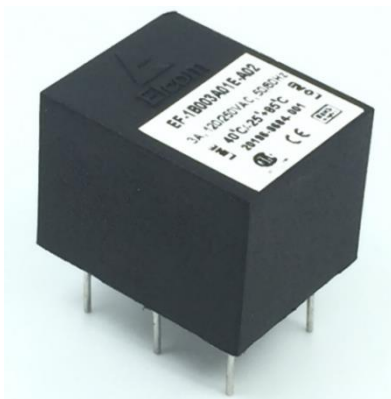


# Datasheet | EA02

## EP-403 Series

General Purpose AC EMI Filter



\*Image shown is for illustrative purpose only



*El.italia EC-EA02[EP-403] serie*



### Technical specifications

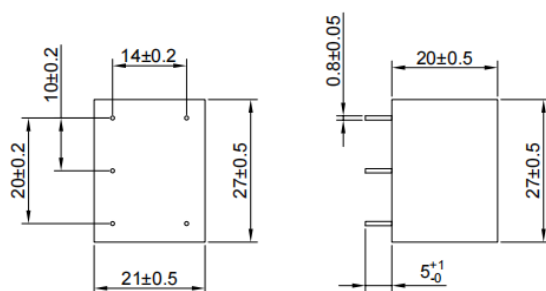
Operating voltage	120/250 VAC
Current rating	1A-6A
Frequency	50/60Hz
Voltage drop	1 Volt max.
High potential test voltage	P -> E 1500VAC P -> N 1414VDC (applicable excluding surge suppressor filter)
Insulation resistance	$\geq 300 \text{ M}\Omega @ 500\text{VDC (PN}\rightarrow\text{E)}$
Operating temperature	40°C / -25°C +85°C

### Attenuation Type

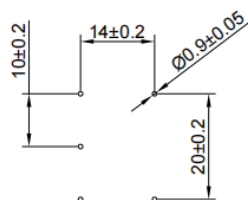
Single Stage

Standard

### Mechanical details



### PCB DRILLING DETAILS



All dimensions in mm.

### Features and benefits

- | All filters provide high attenuation performance.
- | All filters compliance to EN60939-3:2015 & EN60939-2:2005 standards.
- | Compact PCB-mountable design.
- | High reliable.
- | Plastic housing with good aesthetic.
- | Single stage.
- | Input and output connection through soldering pins.
- | Filters available in medical version without capacitor to earth.
- | With surge suppressor filters also available.
- | Cost effective solution.

### Application

- | Electrical and electronic equipment
- | Consumer product
- | Medical equipment
- | SMPS
- | Test & measurement equipment
- | Small to medium-sized machines and household equipment
- | Office automation equipment

Note: For medical application filter, earthing terminal is not provided.

# Datasheet | EA02

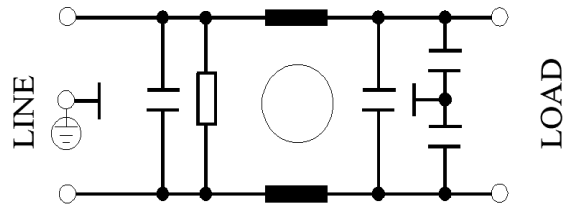
## EP-403 Series



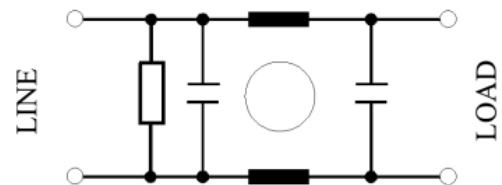
*El.italia EC-EA02[EP-403] serie*

### Electrical schematic

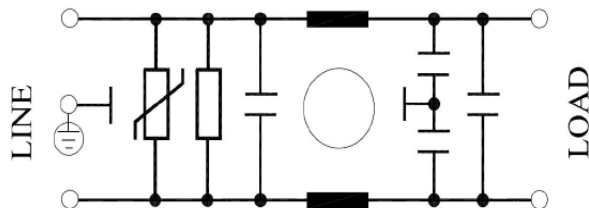
#### General Purpose -



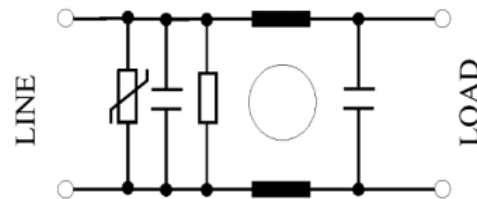
#### Medical equipment application -



#### General Purpose with Surge Suppressor -



#### Medical equipment application with Surge Suppressor -



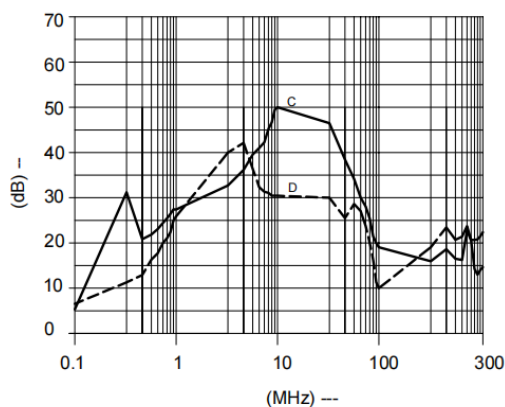
### Filter attenuation graph

C = Common mode (asymmetrical) —————

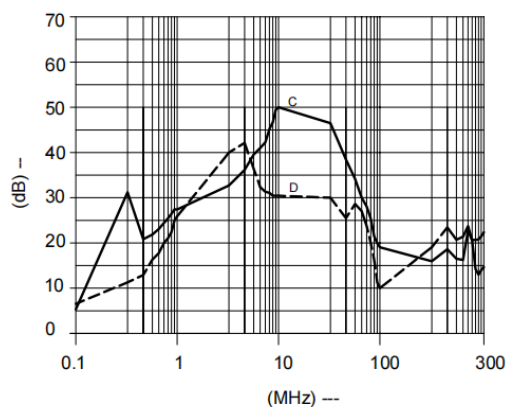
D = Differential mode (symmetrical) - - - - -

#### For general purpose

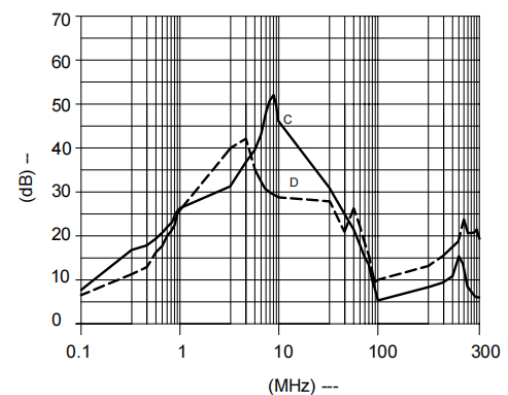
##### For 1A



##### For 3A



##### For 6A



# Datasheet | EA02

## EP-403 Series



*El.italia EC-EA02[EP-403] serie*

**Filter Selection Table**

Sr. No.	Elcom part codes (ordering code)	Rated Current rating (A) @40°C	Leakage current (mA) @250VAC	Pin-type terminal 	Max. Peak current (8/20 μ sec 1 time) (KA)	Energy surge rating (10/1000 μ sec) (Joules)	Approx. Weight (gm)	Attenuation
1	EF-1B001A01E-A02	1	< 0.5	A	----	----	20	Standard
2	EF-1B001A02E-A02	1	< 0.5	A	1.75	42	20	Standard
3	EF-1B001A03E-A02	1	< 0.003	A	----	----	20	Standard
4	EF-1B001A04E-A02	1	< 0.003	A	1.75	42	20	Standard
5	EF-1B003A01E-A02	3	< 0.5	A	----	----	20	Standard
6	EF-1B003A02E-A02	3	< 0.5	A	1.75	42	20	Standard
7	EF-1B003A03E-A02	3	< 0.003	A	----	----	20	Standard
8	EF-1B003A04E-A02	3	< 0.003	A	1.75	42	20	Standard
9	EF-1B006A01E-A02	6	< 0.5	A	----	----	20	Standard
10	EF-1B006A02E-A02	6	< 0.5	A	1.75	42	20	Standard
11	EF-1B006A03E-A02	6	< 0.003	A	----	----	20	Standard
12	EF-1B006A04E-A02	6	< 0.003	A	1.75	42	20	Standard

- Customize products provided on request.
- Maximum leakage under usual AC operating conditions (acc. IEC 60939-3). Note: if the neutral line is interrupted, worst case leakage could reach twice this level.

# Datasheet | EA02

## EP-403 Series



*El.italia EC-EA02[EP-403] serie*

### Syntax

**EF - 1B CCC A YY E - A02**

