

# Datasheet | EB04

## EP-382 Series



### General Purpose AC EMI Filter

### El.italia EC-EB04[EP-382] serie



\*Image shown is for illustrative purpose only



### Technical specifications

Operating voltage	120/250 VAC
Current rating	1A-10A
Frequency	50/60Hz
Voltage drop	1 Volt max.
High potential test voltage	P -> E 1500VAC P -> N 1414VDC (applicable excluding surge suppressor filter)
Insulation resistance	≥ 300 MΩ @ 500VDC (PN→E)
Operating temperature	40°C / -25°C +85°C

### Features and benefits

- | All filters provides high attenuation performance.
- | All filters compliance to EN60939-3:2015 & EN60939-2:2005 standards.
- | Filter available in snap-in mounting provision.
- | Single stage.
- | High reliable.
- | Provision of single fuse holder.
- | Plastic housing with good aesthetic.
- | Input connection through IEC 60320 C14 plug.
- | Output connection with fast-on or wire terminal
- | Available with red illuminated switch.
- | Filters available in medical version without capacitor to earth.
- | With surge suppressor filters also available.

### Attenuation Type

Single Stage

Standard

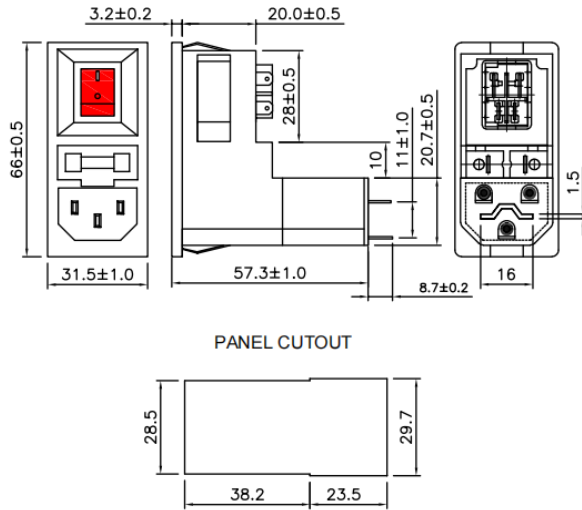
### Applications

- | Portable electrical and electronic equipment
- | Datacom equipment
- | Control Panel
- | SMPS, single phase power supplies
- | Medical equipment

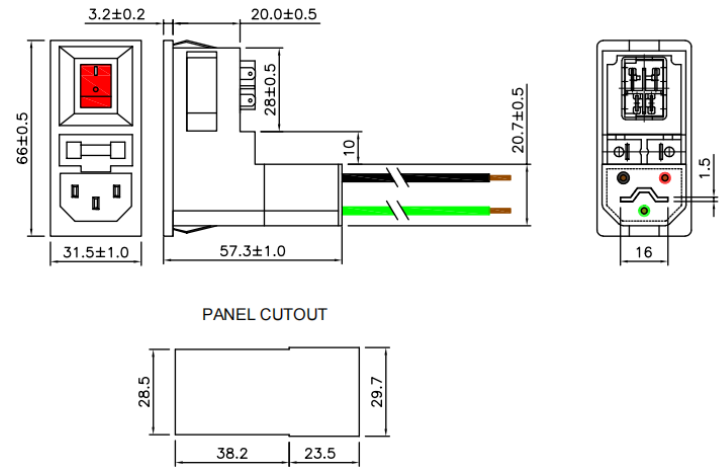


#### Mechanical details

##### Fast-on terminal



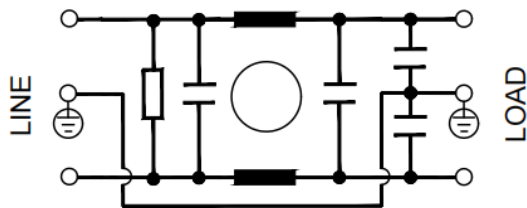
##### Wire terminal



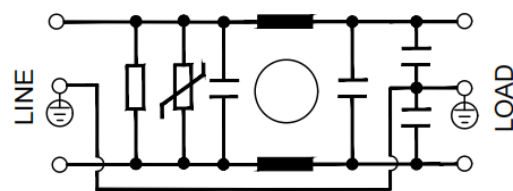
All dimensions in mm.

#### Electrical schematic for filter

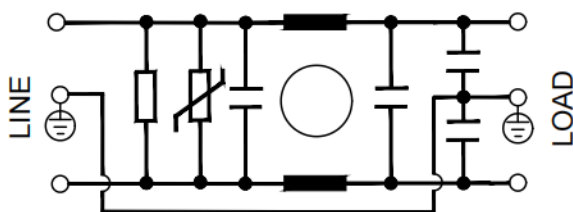
##### General purpose -



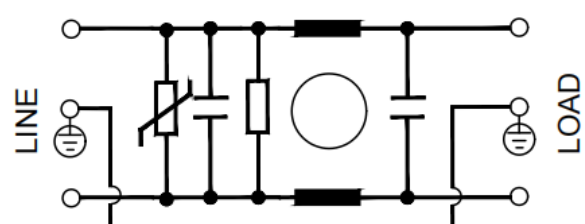
##### Medical equipment application -



##### General purpose with surge suppressor -



##### Medical equipment application with surge suppressor -





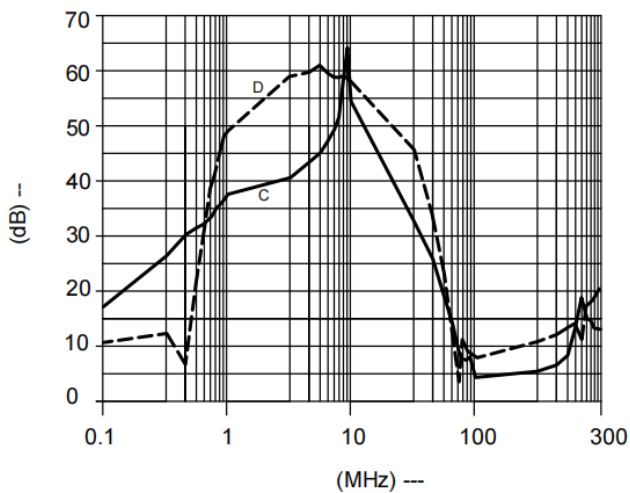
#### Filter attenuation graph

C = Common mode (asymmetrical) ———

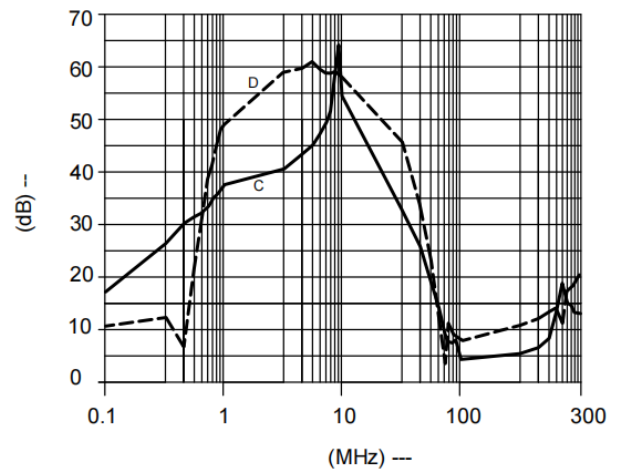
D = Differential mode (symmetrical) - - - - -

For general purpose

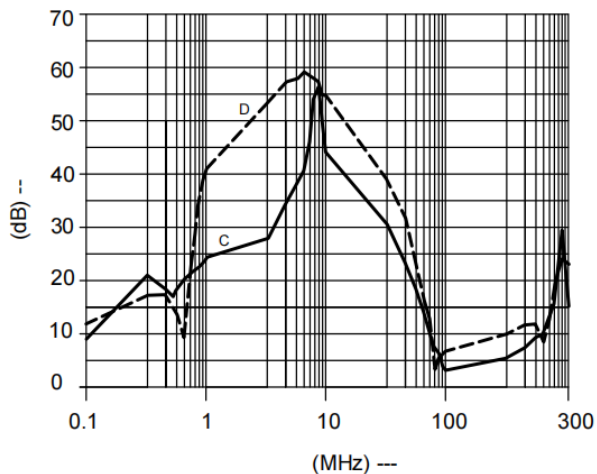
For 1A



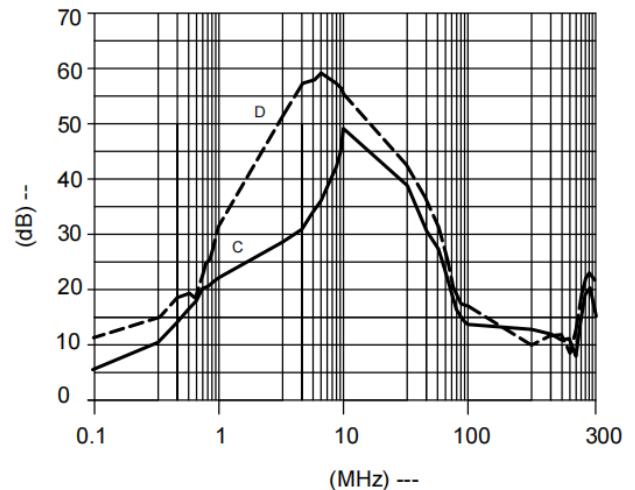
For 3A



For 6A

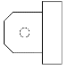



For 10A





#### Product Selection Table –

Sr. No.	Elcom part codes (ordering code)	Rated Current rating (A) @40°C	Leakage current (mA) @250VAC	Terminals (X)		Max. Peak current (8/20 μ sec 1 time) (KA)	Energy surge rating (10/1000 μ sec) (Joules)	Approx. weight (gm)	Attenuation
				Fast-on 	Wire 				
1	EF-1B001X01E-B04	1	< 0.5	C	G	----	----	65	Standard
2	EF-1B001X02E- B04	1	< 0.5	C	G	6.5	175	65	Standard
3	EF-1B001X03E- B04	1	< 0.003	C	G	----	----	65	Standard
4	EF-1B001X04E- B04	1	< 0.003	C	G	6.5	175	65	Standard
5	EF-1B003X01E- B04	3	< 0.5	C	G	----	----	65	Standard
6	EF-1B003X02E- B04	3	< 0.5	C	G	6.5	175	65	Standard
7	EF-1B003X03E- B04	3	< 0.003	C	G	----	----	65	Standard
8	EF-1B003X04E- B04	3	< 0.003	C	G	6.5	175	65	Standard
9	EF-1B006X01E- B04	6	< 0.5	C	G	----	----	65	Standard
10	EF-1B006X02E- B04	6	< 0.5	C	G	6.5	175	65	Standard
11	EF-1B006X03E- B04	6	< 0.003	C	G	----	----	65	Standard
12	EF-1B006X04E- B04	6	< 0.003	C	G	6.5	175	65	Standard
13	EF-1B010X01E- B04	10	< 0.5	C	G	----	----	65	Standard
14	EF-1B010X02E- B04	10	< 0.5	C	G	6.5	175	65	Standard
15	EF-1B010X03E- B04	10	< 0.003	C	G	----	----	65	Standard
16	EF-1B010X04E- B04	10	< 0.003	C	G	6.5	175	65	Standard

- To compile complete part number, replace the 'X' with required output connection terminal. (e.g. EF-1B001B01E-B04)
- Maximum leakage under usual AC operating conditions (acc. IEC 60939-3). Note: if the neutral line is interrupted, worst case leakage could reach twice this level.
- Customize products provided on request.

# Datasheet | EB04

## EP-382 Series



*El.italia EC-EB04[EP-382] serie*

### Connection Type

Current rating (A)	Fast -on	Wire	Earthing
1, 3 & 6	4.8 X 0.8mm	18AWG	Fast-on/wire leads
10		14AWG	

### Syntax

**EF - 1B CCC X YY E - B04**

