

General Purpose AC EMI Filter

El.italia EC-EB10[EP-442] serie



Technical specifications

Operating voltage	85-264 VAC
Current rating	3A
Frequency	47 to 63 Hz
Voltage drop	1 Volt max.
High potential test voltage	P -> E 1500VAC
Insulation resistance	≥ 300 MΩ @ 500VDC (PN→E)
Operating temperature	40°C / -25°C +85°C

*Image shown is for illustrative purpose only

Features and benefits

- | Filters available in double stage
- | All filters provide high attenuation performance.
- | Two stage filters designed for noisy application requiring excellent filter performance.
- | High reliable
- | Panel mounting filter in fabricated metal can.
- | CRCA metal can with nickel plating provides good aesthetic and corrosion protection.

Attenuation Type

Double Stage **High**

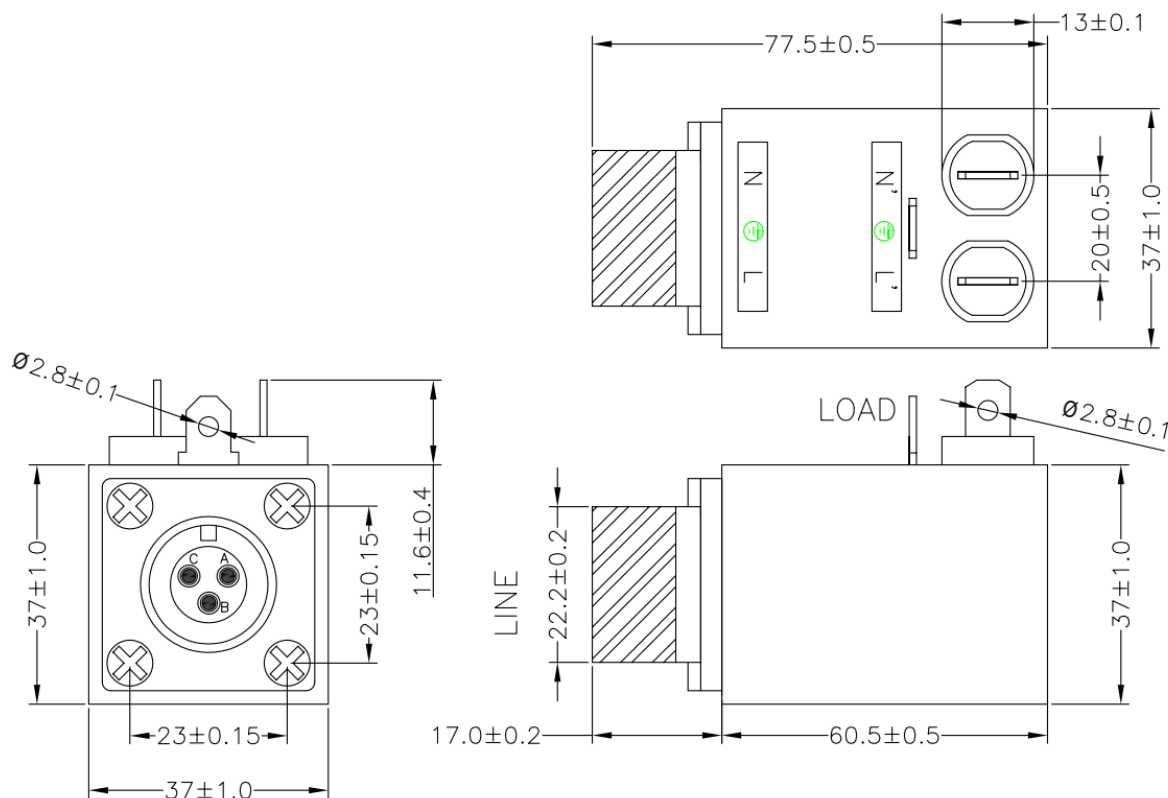
Applications

- | Defence application
- | Aerospace application
- | Military application
- | Industrial application
- | Electrical equipment application

Mechanical details

El.italia EC-EB10[EP-442] serie

- | Circular connector at input side and for output with 6.3 x 0.8 mm/solder tab

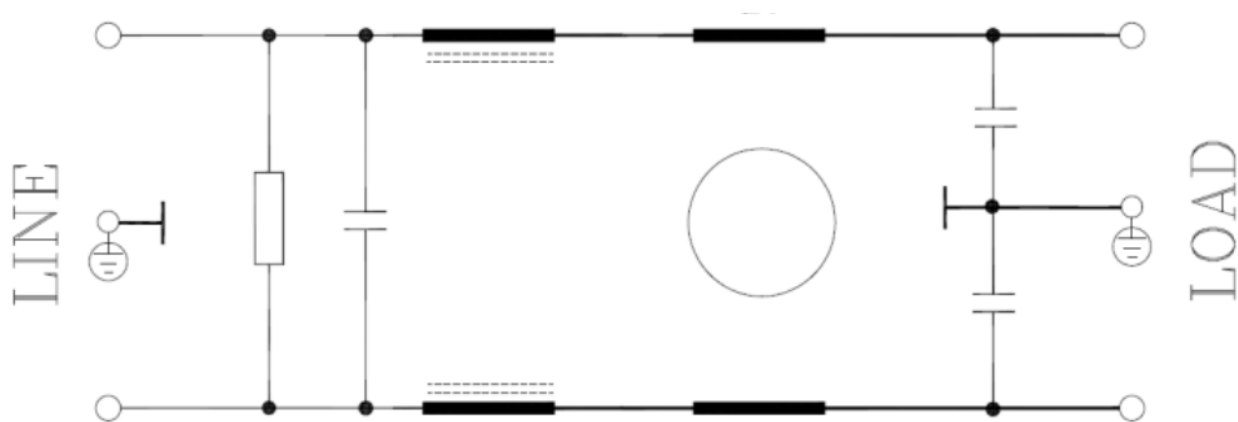


All dimensions in mm

El.italia EC-EB10[EP-442] serie

Electrical schematic for Double Stage Filter

General purpose -

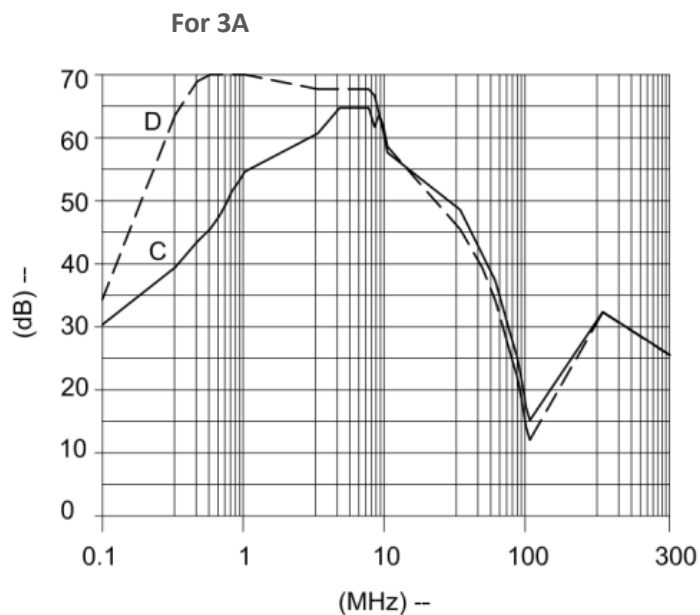


Filter attenuation Graph

C = Common mode (asymmetrical) —————



D = Differential mode (symmetrical) - - - - -

For general application (Double Stage)



Filter Selection Table

El.italia EC-EB10[EP-442] serie

Sr. No.	Elcom part codes (ordering code)	Rated Current rating (A) @40°C	Leakage current (mA) @250VAC	Terminals (X)		Approx. Weight (gram)	Attenuation
				Circular connector at input 	Fast-on at output 		
1	EF-1B003B26A-B10	3	< 1.0	B		250	High

- Connector MPNMS3102R-14S-7P, Cap-- MS25043-14D or equivalent
- Customize products provided on request.

Syntax

EF – 1B CCC B YY A – B10

