

# Datasheet | EB17

## EP-442 series



General Purpose AC EMI Filter

*El.italia EC-EB17 [EP-442] serie*



### Technical specifications

Operating voltage	85-264 VAC
Current rating	3A
Frequency	47 to 63 Hz
Voltage drop	1 Volt max.
High potential test voltage	P -> E 1500VAC
Insulation resistance	≥ 300 MΩ @ 500VDC (PN→E)
Operating temperature	40°C / -25°C +85°C

\*Image shown is for illustrative purpose only

### Features and benefits

- | Filters available in double stage
- | All filters provide high attenuation performance.
- | Two stage filters designed for noisy application requiring excellent filter performance.
- | High reliable
- | Panel mounting filter in fabricated metal can.
- | CRCA metal can with nickel plating provides good aesthetic and corrosion protection.

### Attenuation Type

Double Stage **High**

### Applications

- | Defence application
- | Aerospace application
- | Military application
- | Industrial application
- | Electrical equipment application

# Datasheet | EB17

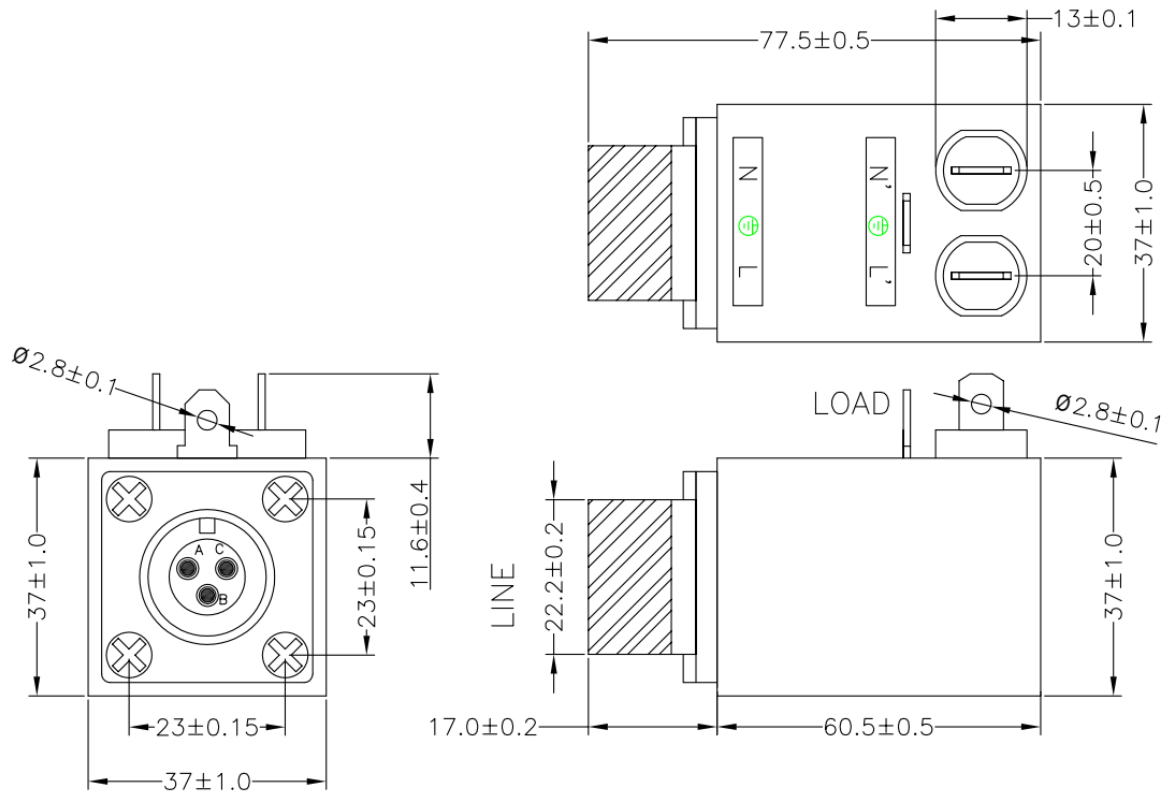
## EP-442 series



### Mechanical details

### El.italia EC-EB17 [EP-442] serie

- | Circular connector at input side and for output with 6.3 x 0.8 mm/solder tab



All dimensions in mm

# Datasheet | EB17

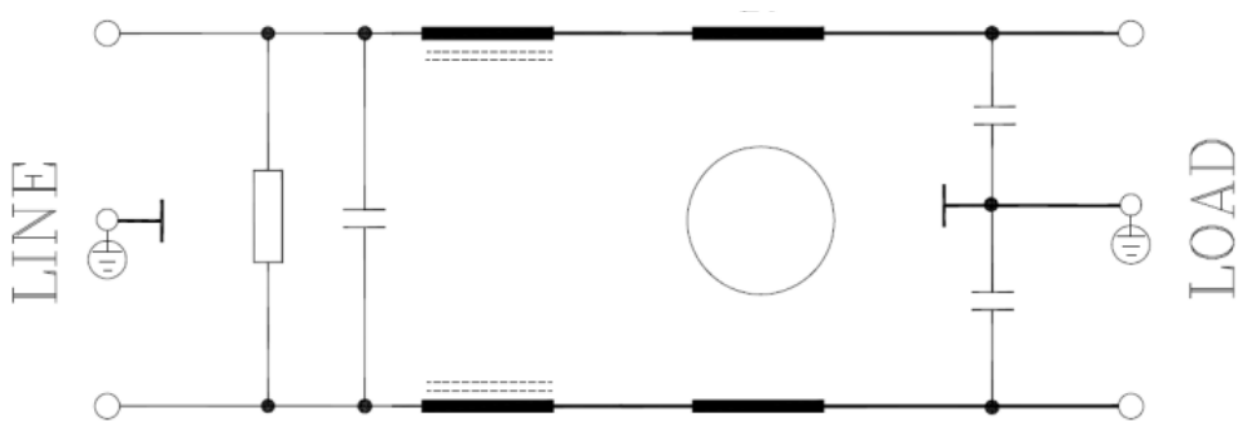
## EP-442 series



*El.italia EC-EB17 [EP-442] serie*

### Electrical schematic for Double Stage Filter

General purpose -



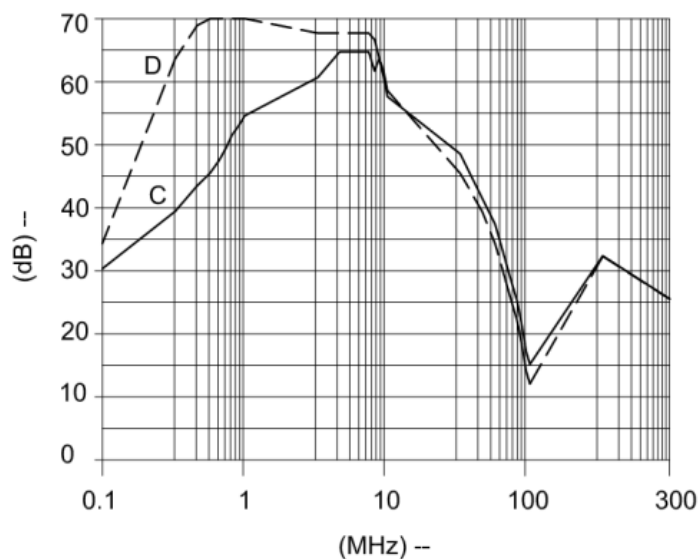
### Filter attenuation Graph

C = Common mode (asymmetrical) —————

D = Differential mode (symmetrical) -----

For general application (Double Stage)

For 3A





# Datasheet | EB17

## EP-442 series



### Filter Selection Table

### El.italia EC-EB17 [EP-442] serie

Sr. No.	Elcom part codes (ordering code)	Rated Current rating (A) @40°C	Leakage current (mA) @250VAC	Terminals (X)		Approx. Weight (gram)	Attenuati on
				Circular connector at input 	Fast-on at output 		
1	EF-1B003B26A-B10	3	< 1.0	B		250	High

- Connector MS3102R-14S-7S (SQC + C&C) or equivalent
- Customize products provided on request.

### Syntax

**EF - 1B CCC B YY A - B17**

