



General Purpose DC EMI Filter



El.italia EC-EC01 serie

Conformance



Technical specifications

| | |
|-----------------------------|------------------------------|
| Operating voltage | 12 VDC |
| Current rating | 3A |
| Voltage drop | 1 Volt max. |
| High potential test voltage | +,- to E 1500VAC |
| Insulation resistance | ≥ 300 MΩ @ 500VDC (+,- to E) |
| Operating temperature | 40°C / -25°C +85°C |

*Image shown is for illustrative purpose only

Features and benefits

- | All filters provide high attenuation performance.
- | High reliable
- | All filters compliance to EN60939-3:2015 & EN60939-2:2005 standards
- | Easy and fast chassis mountable filter in deep drawn metal can with compact size.
- | CRCA metal can with nickel plating provides good aesthetic and corrosion protection.
- | Various terminal options are available.

Attenuation Type

Single Stage

Standard

Application:

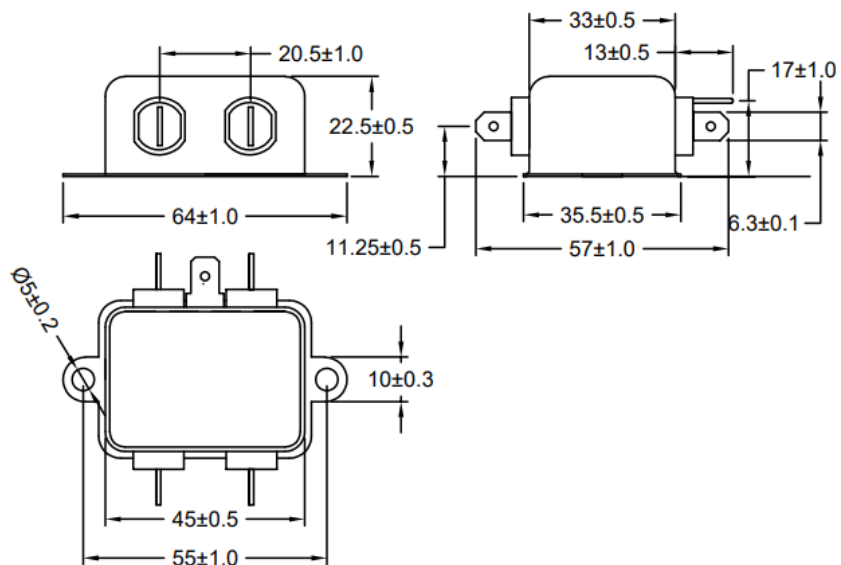
- | Modems
- | Network Routing Equipment
- | Servers
- | Ethernet Hubs
- | Base Stations
- | Power Supplies
- | Photovoltaic Inverters
- | DC Motor Drives
- | DC Chargers
- | Frequency Inverters
- | Energy Systems



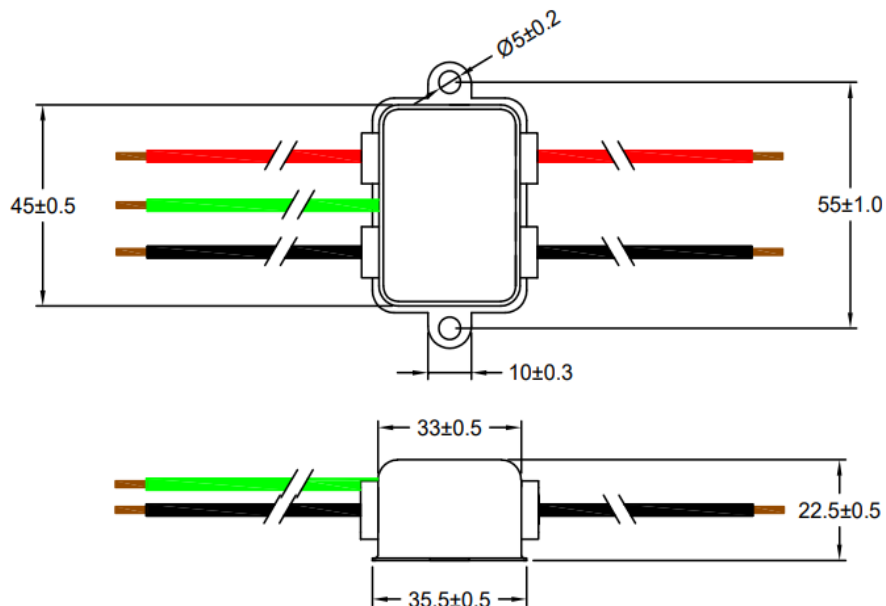
El.italia EC-EC01 serie

Mechanical details

Fast-on terminal



touch safe terminal

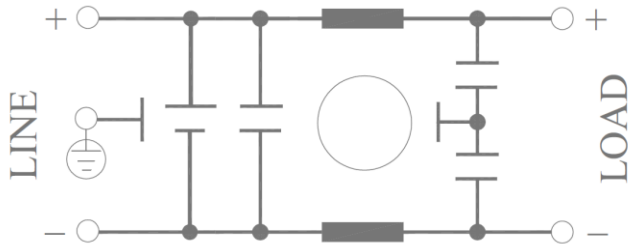


All dimensions in mm.
General tolerance $\pm 1\%$



El.italia EC-EC01 serie

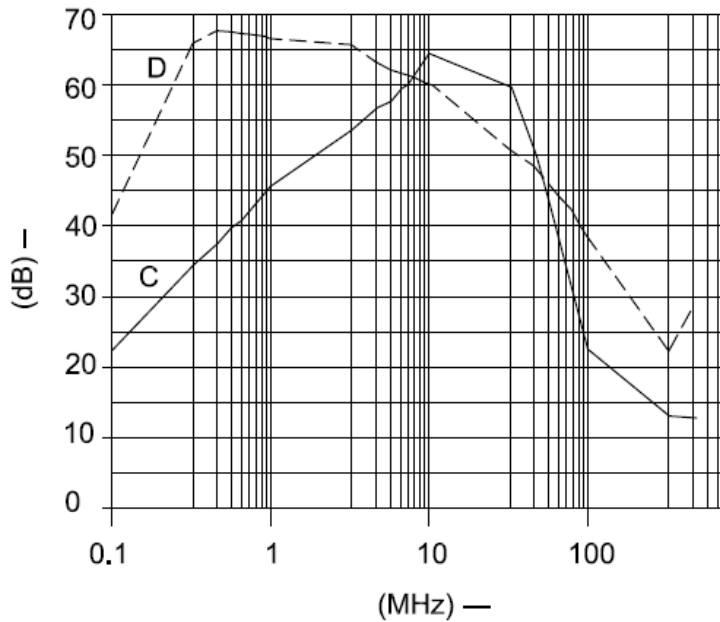
Electrical schematic for filter



Filter attenuation graph

C = Common mode (asymmetrical) _____
 D = Differential mode (symmetrical) -----

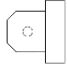

For general purpose





El.italia EC-EC01 serie

Product Selection Table –

| Sr. No. | Elcom part codes (ordering code) | Rated Current rating (A) @40°C | Terminal Fast-on  | Wire  | Approx. weight (gm) | Attenuation |
|---------|----------------------------------|--------------------------------|--|--|---------------------|-------------|
| 1 | EF-4A003X01G-C01 | 3 | B | G | 80 | Standard |

- Customize products provided on request.

Connection Type

| Current Rating (A) | Fast -on | Wire | Earthing |
|--------------------|-------------|-------|------------------------|
| 3 | 6.3 X 0.8mm | 18AWG | Fast-on terminal/wires |

Syntax

EF – 4A CCC X YY G – C01

