

Datasheet | EC10 DC filter EP-612 Series



General Purpose DC EMI Filter

El.italia EC-EC10 [EP-612] serie



Technical specifications

Operating voltage	48 VDC
Current rating	1A to 6 Amp
Voltage drop	1 Volt max.
High potential test voltage	+,- to E 1500VAC
Insulation resistance	≥ 300 MΩ @ 500VDC (+,- to E)
Operating temperature	40°C /-25°C +85°C

Image shown is for illustrative purpose only

Features and benefits

- | Filters available in single stage and double stage
- | All filters provide high attenuation performance.
- | Two stage filters designed for noisy application requiring excellent filter performance.
- | All filters compliance to EN60939-3:2015 & EN60939-2:2005 standards.
- | High reliable
- | Chassis mountable filter in fabricated metal can.
- | CRCA metal can with nickel plating provides good aesthetic and corrosion protection.

Attenuation Type

Single Stage **Standard**

Application:

- | Modems
- | Network Routing Equipment
- | Servers
- | Ethernet Hubs
- | Base Stations
- | Power Supplies
- | Photovoltaic Inverters
- | DC Motor Drives
- | DC Chargers
- | Frequency Inverters
- | Energy Systems

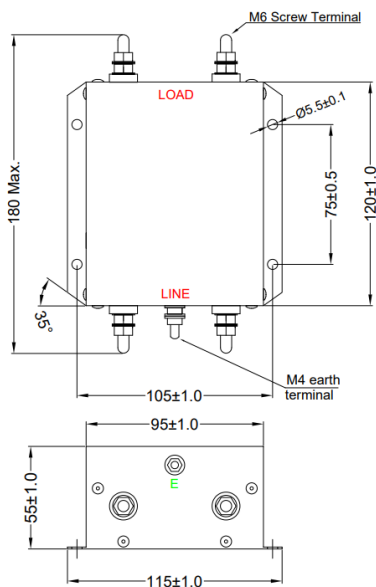
Datasheet | EC10 DC filter EP-612 Series



Mechanical details

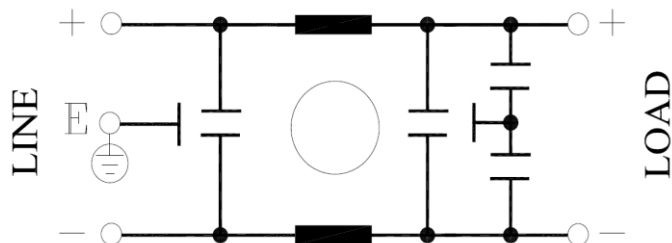
El.italia EC-EC10 [EP-612] serie

I For screw terminal



All dimensions in mm

Electrical schematic for Filter



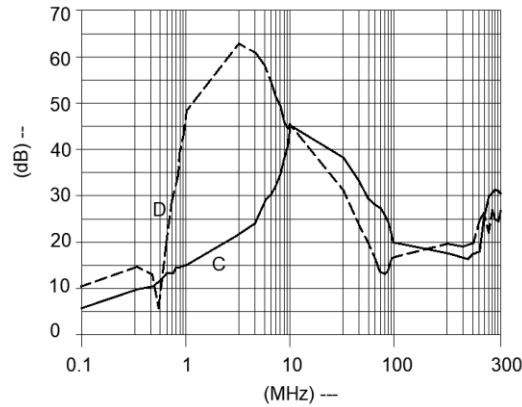
Datasheet | EC10 DC filter EP-612 Series




El.italia EC-EC10 [EP-612] serie

Filter attenuation Graph

C = Common mode (asymmetrical) ———
D = Differential mode (symmetrical) - - - - -



Filter Selection Table

Sr. No.	Elcom part codes (ordering code)	Rated Current rating (A) @40°C	Terminals (X)	Approx. Weight (gm)	Attenuation
			Screw 		
1	EF-4C050X06G-C10	50	D	900	Standard
2	EF-4C075X01G-C10	75	D	900	Standard

- To compile complete part number, replace the 'X' with required I/O connection terminal. (e.g. EF-4C050D06G-C10)
- Customize products provided on request.

Datasheet | EC10 DC filter

EP-612 Series



Connection Type

El.italia EC-EC10 [EP-612] serie

Current Rating (A)	Screw terminal	Earthing
50	M6	M4
75	M8	M4

Syntax

EF - 4C CCC X YY Z - C10

