

Datasheet | EC22

EP-612 Series



General Purpose AC EMI Filter

El.italia EC-EC22 [EP-612] serie



Technical specifications

Operating voltage	120/250 VAC
Current rating	700A-1000A
Frequency	50/60Hz
Voltage drop	1 Volt max.
High potential test voltage	P -> E 1500VAC
Insulation resistance	≥ 300 MΩ @ 500VDC (PN→E)
Operating temperature	40°C / -25°C +85°C

Image shown is for illustrative purpose only

Features and benefits

- | Filters available in single stage and double stage
- | All filters provide high attenuation performance.
- | Two stage filters designed for noisy application requiring excellent filter performance.
- | All filters compliance to EN60939-3:2015 & EN60939-2:2005 standards.
- | High reliable
- | Chassis mountable filter in fabricated metal can.
- | CRCA metal can with nickel plating provides good aesthetic and corrosion protection.

Attenuation Type

Single Stage	Standard
Double Stage	High

Application

- | Industrial application
- | Automotive application
- | Audio video products
- | Power supplies.
- | Electrical equipment application
- | UPS/inverter

Datasheet | EC22

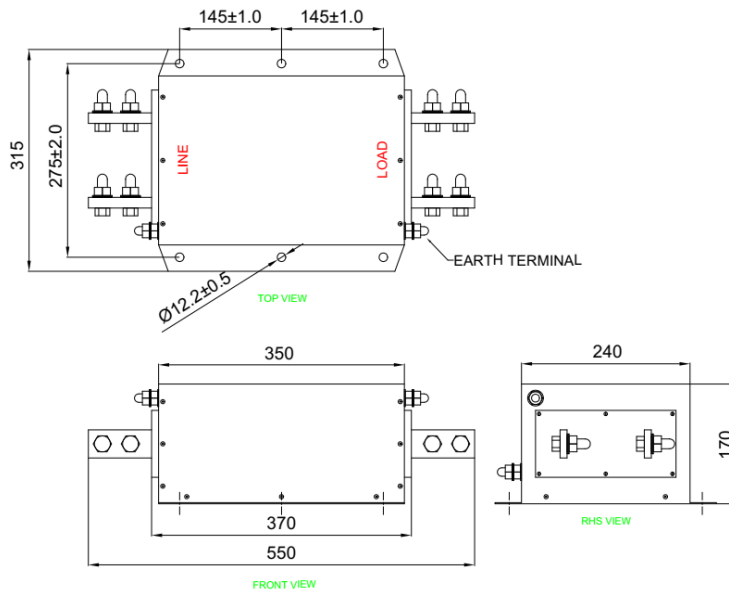
EP-612 Series



Mechanical details

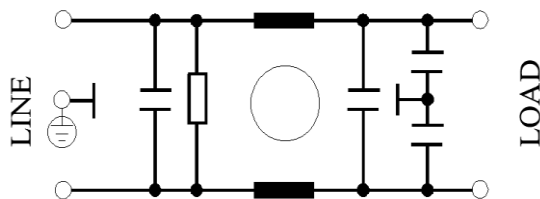
El.italia EC-EC22 [EP-612] serie

For bus-bar



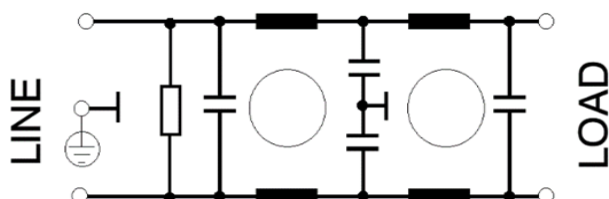
Electrical schematic for Single Stage Filter

General purpose -



Electrical schematic for Double Stage Filter

General purpose -



Datasheet | EC22

EP-612 Series



El.italia EC-EC22 [EP-612] serie

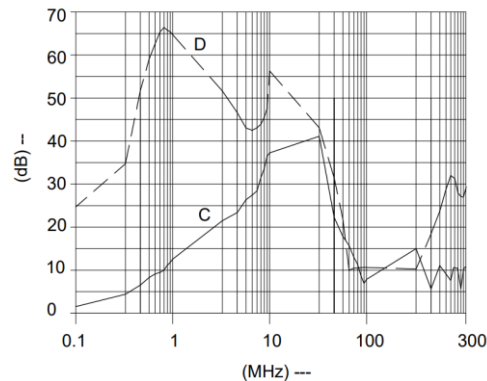
Filter attenuation Graph

C = Common mode (asymmetrical) -----

D = Differential mode (symmetrical) -----

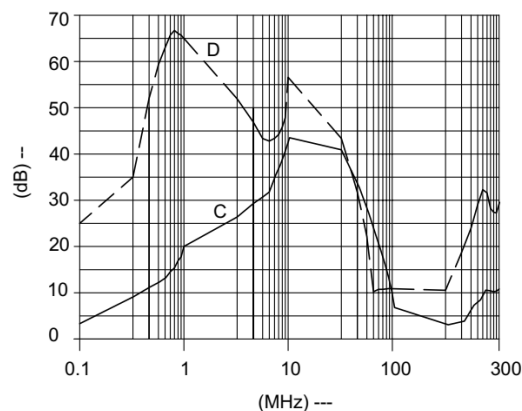
For general application (Single Stage)

For 700A-1000A



For general application (Double Stage)

For 700A-1000A



Filter Selection Table

Sr. No.	Elcom part codes (ordering code)	Rated Current rating (A) @40°C	Leakage current (mA) @250VAC	Approx. Weight (Kg)	Attenuation
1	EF-1B700E01G-22	700	< 0.5	14	Standard
2	EF-1B800E01G-22	800	< 0.5	14	Standard
3	EF-1B1K0E01G-22	1000	< 0.5	15	Standard
4	EF-1B700E20G-22	700	< 0.5	14	High
5	EF-1B800E20G-22	800	< 0.5	14	High
6	EF-1B1K0E20G-22	1000	< 0.5	15	High

Datasheet | EC22

EP-612 Series



El.italia EC-EC22 [EP-612] serie

- Product having CE and RoHS compliance only.
- Maximum leakage under usual AC operating conditions (acc. IEC 60939-3). Note: if the neutral line is interrupted, worst case leakage could reach twice this level.
- Customize products provided on request.

Syntax

EF – 1B CCC E YY G – C22

