



General Purpose AC EMI Filter

El.italia EC-EC28 serie



Technical specifications

Operating voltage	120/250 VAC
Current rating	20A & 60A
Frequency	50/60Hz
Voltage drop	1 Volt max.
High potential test voltage	P -> E 1500VAC
Insulation resistance	≥ 300 MΩ @ 500VDC (PN→E)
Operating temperature	40°c /-25°c +85°c

*Image shown is for illustrative purpose only

Features and benefits

- | Filters available in double stage
- | All filters provide high attenuation performance.
- | Two stage filters designed for noisy application requiring excellent filter performance.
- | High reliable
- | Easy and fast chassis mountable filter with compact size.
- | CRCA metal can with nickel plating provides good aesthetic and corrosion protection.
- | Filters available in medical version without capacitor to earth.
- | Input and Output connection through circular connector.
- | General purpose filters with low leakage current for safety critical application.

Attenuation Type

Double Stage

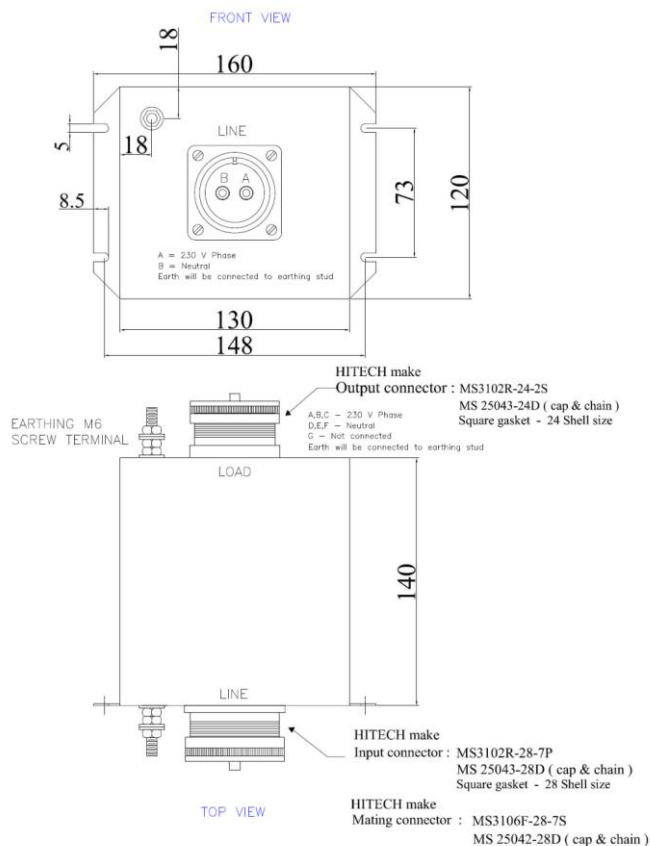
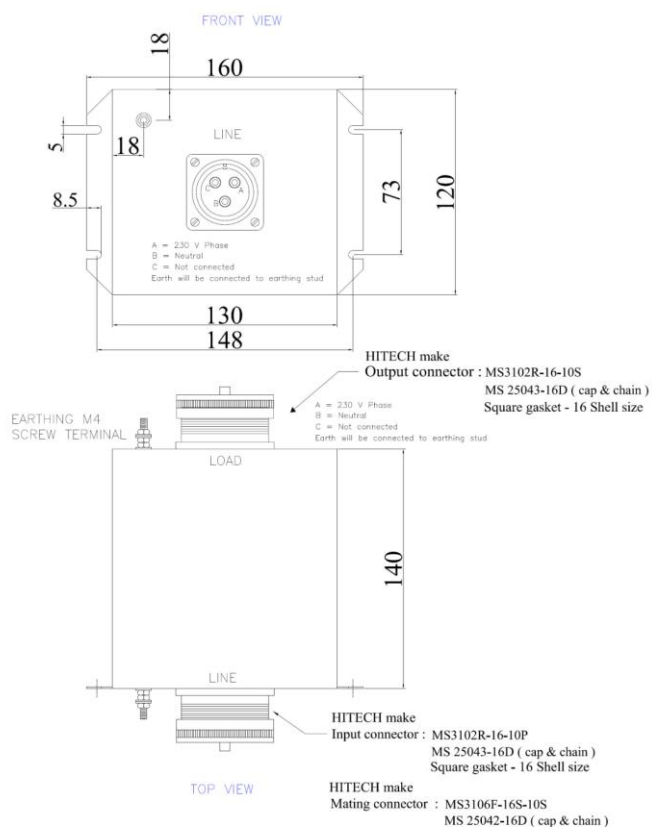
High

Applications

- | Defence application
- | Industrial application
- | Automotive application
- | Electrical equipment application
- | Office automation equipment

Mechanical details

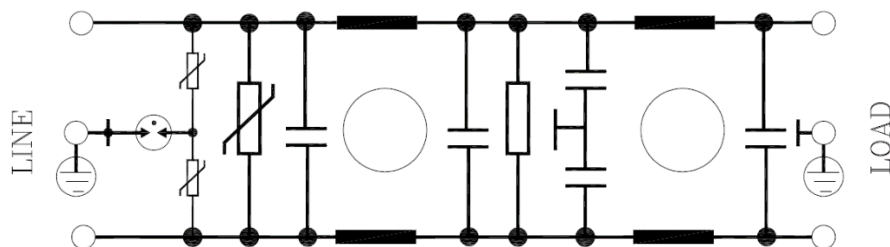
El.italia EC-EC28 serie



All dimensions in mm
General tolerance=±2mm

Electrical schematic for Double Stage Filter

General purpose –



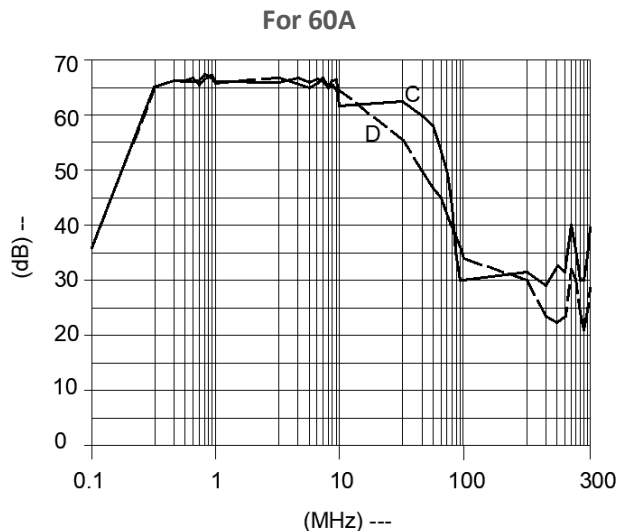
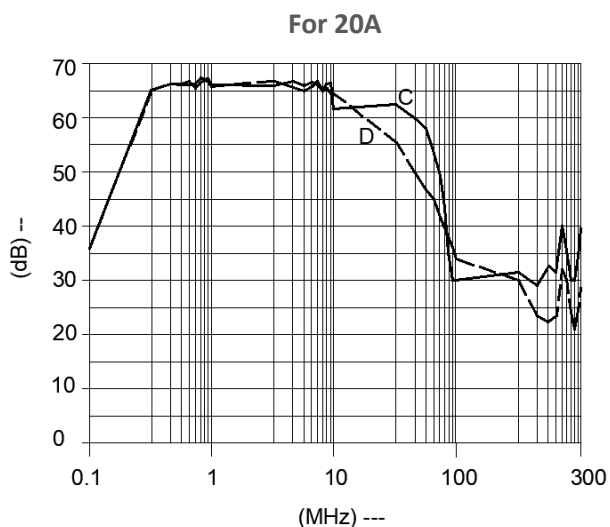
Filter attenuation Graph

C = Common mode (asymmetrical)


D = Differential mode (symmetrical) -----

El.italia EC-EC28 serie

For general application (Double Stage)



Filter Selection Table

Sr. No.	Elcom part codes (ordering code)	Rated Current rating (A) @40°C	Leakage current (mA) @250V AC	Terminals (X)	Max. Peak current (8/20 μ sec 1 time) (KA)	Energy surge rating (10/1000 μ sec) (Joules)	Approx. Weight (kg)	Attenuation
				Circular connector 				
1	EF-1B020X24A-C28	20	< 30	I	10	350	5	High
2	EF-1B060X24A-C28	60	< 30	I	10	350	5	High

- To compile complete part number, replace the 'X' with required I/O connection terminal. (e.g. EF-1B020I24A-C28).
- Maximum leakage under usual AC operating conditions (acc. IEC 60939-3). Note: if the neutral line is interrupted, worst case leakage could reach twice this level.
- Customize products provided on request.

Connection Type

El.italia EC-EC28 serie

Current Rating (A)	Circular connector	Earthing
20	I	M4 Screw
60		M6 Screw

Syntax

EF – 1B CCC X YY A – C28

