

Datasheet | EC36

EP-355WON Series



High attenuation AC EMI Filter

El.italia EC-EC36 [EP-355WON] serie



Technical specifications

Operating voltage	440 VAC
Current rating	15A-40A
Frequency	50/60Hz
Voltage drop	1 Volt max.
High potential test voltage	P -> E 1500VAC
Insulation resistance	≥ 300 MΩ @ 500VDC (PN→E)
Operating temperature	40°C / -25°C +85°C

*Image shown is for illustrative purpose only

Features and benefits

- | Filters available in double stage
- | All filters provide high attenuation performance.
- | Two stage filters designed for noisy application requiring excellent filter performance.
- | All filters compliance to EN60939-3:2015 & EN60939-2:2005 standards.
- | High reliable
- | Easy and fast chassis mountable filter with compact size.
- | CRCA metal can with nickel plating provides good aesthetic and corrosion protection.
- | With surge suppressor filters also available
- | Various terminal options are available

Attenuation Type

Double Stage

High

Applications

- | Consumer product
- | Defence application
- | Industrial application
- | Automotive application
- | Printing Machinery
- | Electrical equipment application

Datasheet | EC36

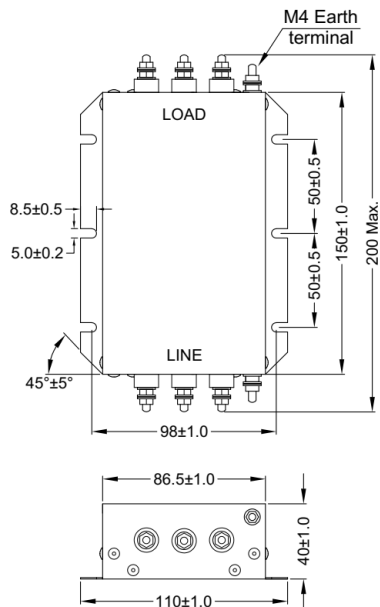
EP-355WON Series



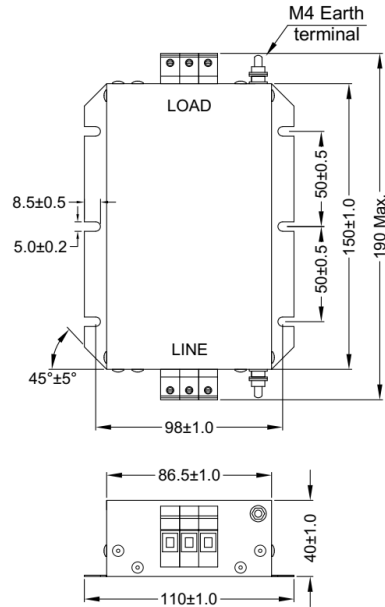
Mechanical details

El.italia EC-EC36 [EP-355WON] serie

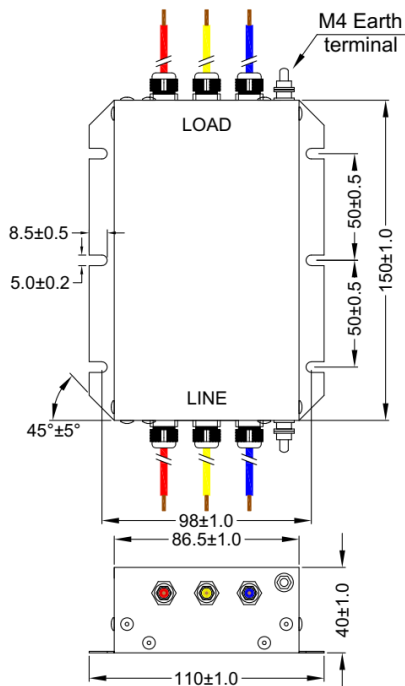
Screw terminal



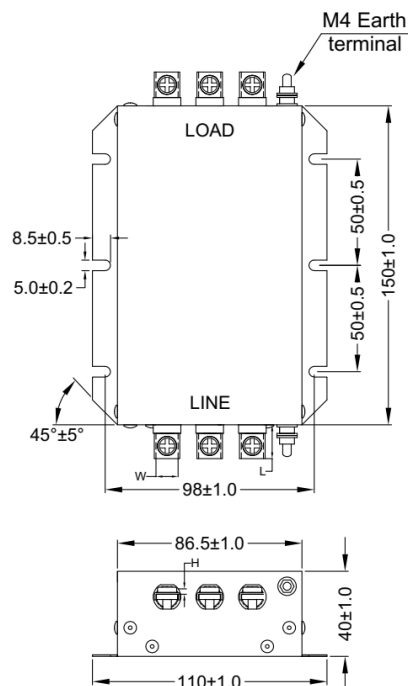
Touch safe terminal



Wire Terminal



Busbar Terminal



*All dimensions are in mm.

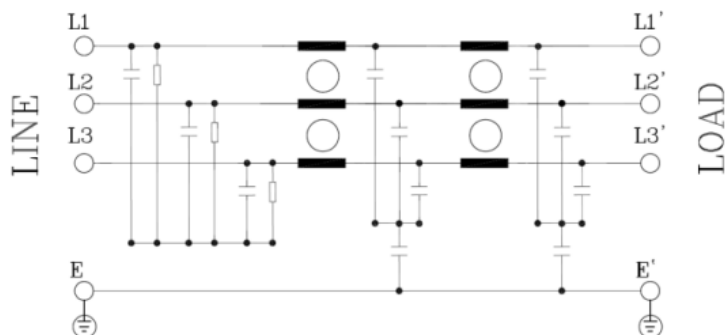
Datasheet | EC36

EP-355WON Series



Electrical schematic

El.italia EC-EC36 [EP-355WON] serie

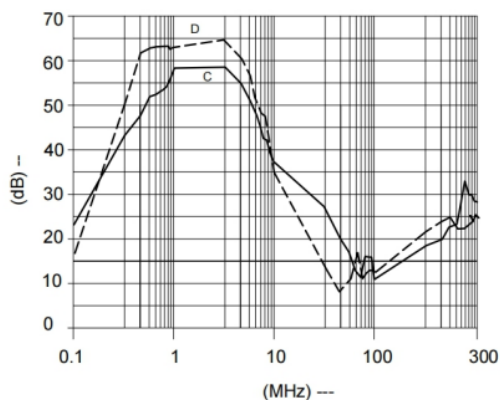


Filter attenuation graph

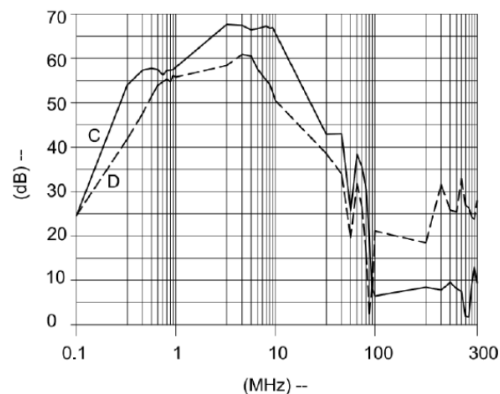
C = Common mode (asymmetrical) —————

D = Differential mode (symmetrical) - - - - -

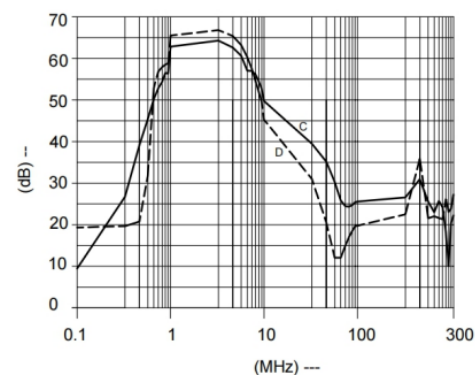
For 15A



For 20A



For 30A & 40A



Filter Selection Table

Sr. No.	Elcom part codes (ordering code)	Current rating (A)	Leakage current (mA) @440V AC	Terminals (X)				Weight (Kg)	Attenuation
				Screw 	Busbar 	Touch -safe 	Wire 		
1	EF-3A015X24G-C36	15	< 3.5	D	E	F	G	1.2	High
2	EF-3A020X24G-C36	20	< 3.5	D	E	F	G	1.2	High
2	EF-3A030X24G-C36	30	< 3.5	D	E	F	G	1.2	High
4	EF-3A040X24G-C36	40	< 3.5	D	E	F	G	1.2	High

Datasheet | EC36

EP-355WON Series



- To compile complete part number, replace the 'X' with required I/O connection terminal. (e.g. EF-3A015D24G-C36)
- Maximum leakage under usual AC operating conditions (acc. IEC 60939-3). Note: if the neutral line is interrupted, worst case leakage could reach twice this level.
- Customize products provided on request.

Connection type

Current Rating (A)	Screw terminal details		Bus bar terminal details		Touch safe terminal details		Wire terminal details (AWG)	Earthing screw terminal details
	Screw	Recommended tightening torque	Bus bar (L x W x H)	connection screw terminal	Touch safe	Recommended tightening torque		
15	M4	12kgcm max	12x10x2.5	M4	6 Sq.mm	10.6-13 lbf.in	14	M4
20	M4	12kgcm max	12x10x2.5	M4	6 Sq.mm	10.6-13 lbf.in	12	M4
30	M4	12kgcm max	12x10x2.5	M4	6 Sq.mm	10.6-13 lbf.in	10	M4
40	M4	12kgcm max	12x10x2.5	M4	6 Sq.mm	10.6-13 lbf.in	8	M4

Syntax

EF – 3A CCC X YY G - C36

