



## High attenuation AC EMI Filter

*El.italia EC-EC53 serie*



### Technical specifications

Operating voltage	440VAC (P-P)
Current rating	50A-80A
Frequency	50/60Hz
Voltage drop	1 Volt max.
High potential test voltage	P -> E 1500VAC
Insulation resistance	≥ 300 MΩ @ 500VDC (PN→E)
Operating temperature	40°c /-25°c +85°c

\*Image shown is for illustrative purpose only

### Features and benefits

- | Filters available in single& double stage
- | All filters provide high attenuation performance.
- | Two stage filters designed for noisy application requiring excellent filter performance.
- | All filters compliance to EN60939-3:2015 & EN60939-2:2005 standards.
- | High reliable
- | Easy and fast chassis mountable filter with compact size.
- | CRCA metal can with nickel plating provides good aesthetic and corrosion protection.
- | Various terminal options are available

### Attenuation Type

Single Stage	Standard
Double Stage	High

### Applications

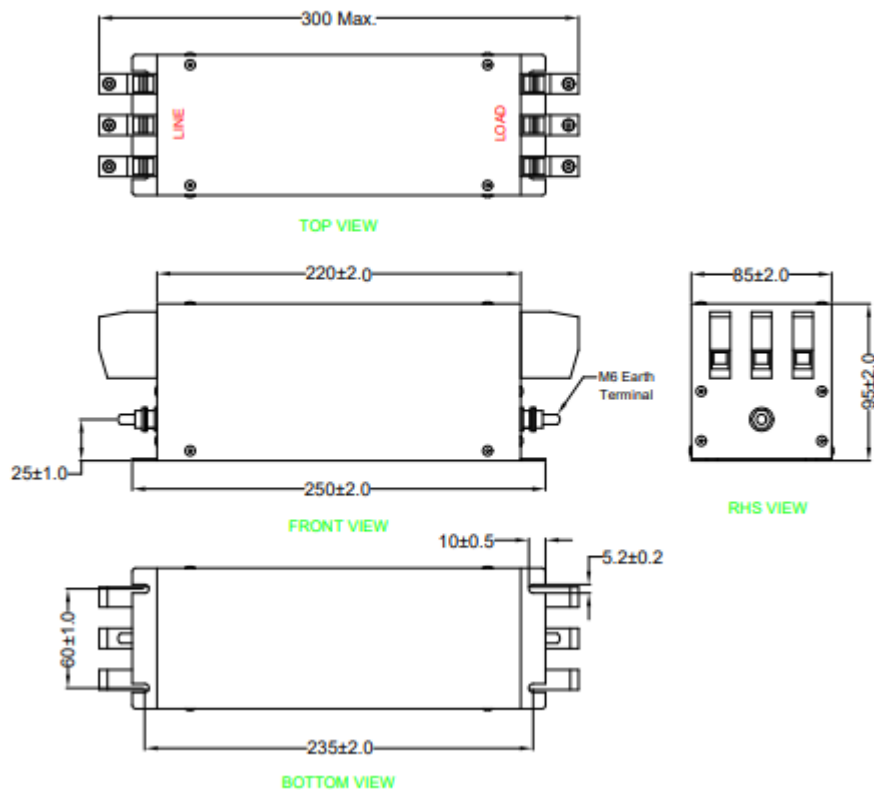
- | Consumer product
- | Defence application
- | Industrial application
- | Automotive application
- | Printing Machinery
- | Electrical equipment application



## Mechanical details

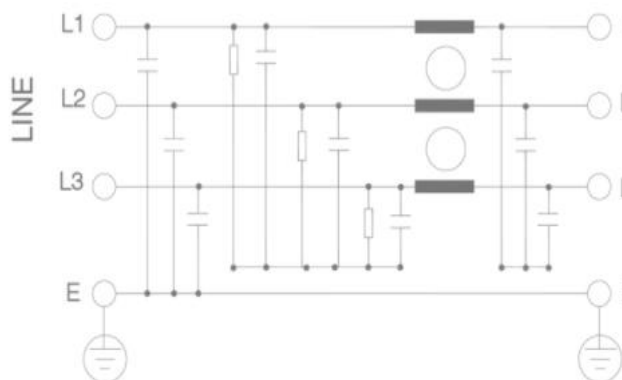
## El.italia EC-EC53 serie

### Touch safe terminal



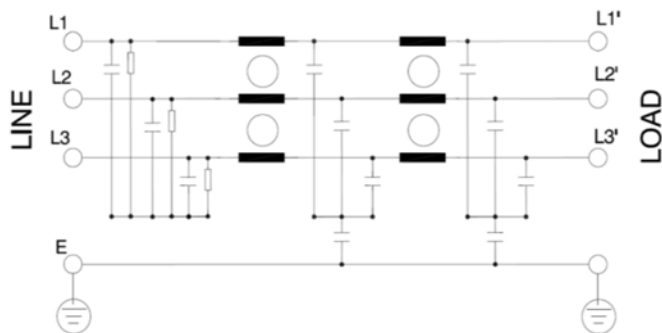
\*All dimensions are in mm.  
General tolerance=±2%

## Electrical schematic for Single stage filter





## Electrical schematic for Double stage filter



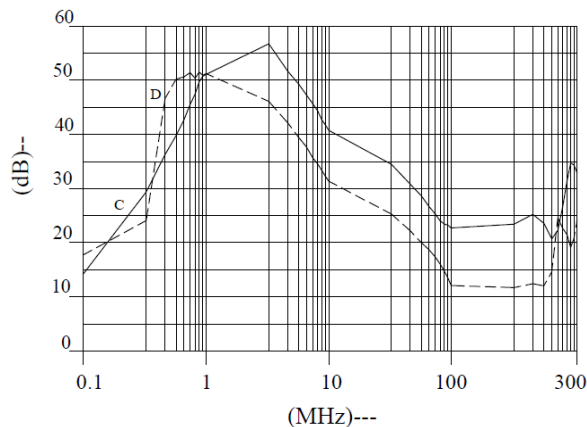
## Filter attenuation graph

C = Common mode (asymmetrical)

D = Differential mode (symmetrical) -----

For single stage

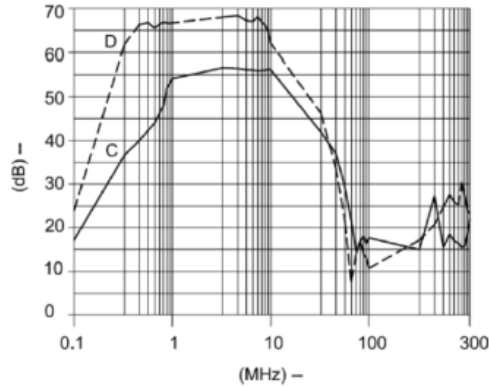
For 50-80A







For double stage

For 50-60A



### Filter Selection Table

Sr. No.	Elcom part codes (ordering code)	Current rating (A)	Leakage current (mA) @440V AC	Terminals (X)		Weight (Kg)	Attenuation
				Screw 	Touch -safe 		
1	EF-3A050X01G-C53	50	< 3.5	D	F	1.8	Standard
2	EF-3A060X01G-C53	60	< 3.5	D	F	1.8	Standard
2	EF-3A080X01G-C53	80	< 3.5	D	F	1.8	Standard
4	EF-3A050X20G-C53	50	< 3.5	D	F	2	High
5	EF-3A060X20G-C53	60	< 3.5	D	F	2	High

- To compile complete part number, replace the 'X' with required I/O connection terminal. (e.g. EF-3A050D20G-C53)
- Customize products provided on request.



## Connection type

## El.italia EC-EC53 serie

Current Rating (A)	Screw terminal details		Touch safe terminal details		Earthing screw terminal details
	Screw	Recommended tightening torque	Touch safe	Recommended tightening torque	
50	M6	20-25Kgcm	16 Sq.mm	22-25 lbf.in	M6
60	M6	20-25Kgcm	16 Sq.mm	22-25 lbf.in	M6
80	M8	25-30Kgcm	16 Sq.mm	22-25 lbf.in	M6

## Syntax

EF - 3A CCC X YY G - C53

