



General Purpose AC EMI Filter

El.italia EC-EC55 serie



*Image shown is for illustrative purpose only

Technical specifications

| | |
|-----------------------------|--|
| Operating voltage | 440VAC (P-P) |
| Current rating | 80A - 150A |
| Frequency | 50/60Hz |
| Voltage drop | 1 Volt max. |
| High potential test voltage | P -> E 1500VAC P ->P 2121VDC (applicable for general purpose filter) |
| Insulation resistance | ≥ 300 MΩ @ 500VDC (P→E) |
| Operating temperature | 40°C / -25°C +85°C |

Features and benefits

- | Filters available in Single stage & double stage.
- | All filters provide high attenuation performance.
- | Two stage filters designed for noisy application requiring excellent filter performance.
- | High reliable
- | Easy and fast chassis mountable filter with compact size.
- | CRCA metal can with nickel plating provides good aesthetic and corrosion protection.
- | General purpose filters with low leakage current for safety critical application.
- | Various terminal options are available

Attenuation Type

| | |
|--------------|----------|
| Single Stage | Standard |
| Double Stage | High |

Applications

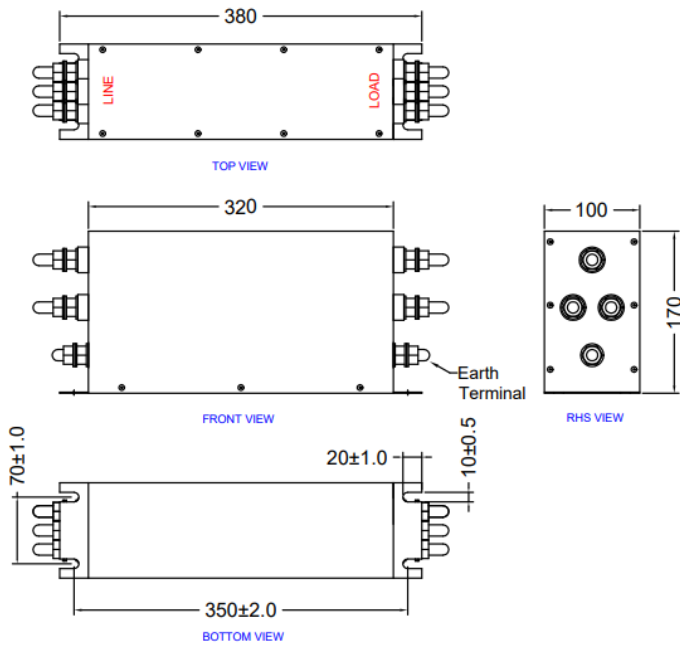
- | Defence application
- | Industrial application
- | Automotive application
- | Weighting Machines
- | Printing Machinery
- | Electrical equipment application
- | Office automation equipment



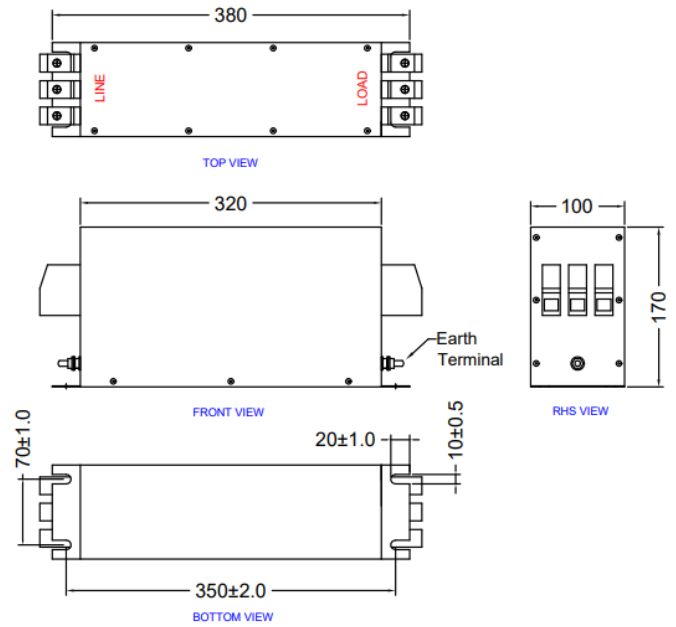
Mechanical details

El.italia EC-EC55 serie

For screw terminal



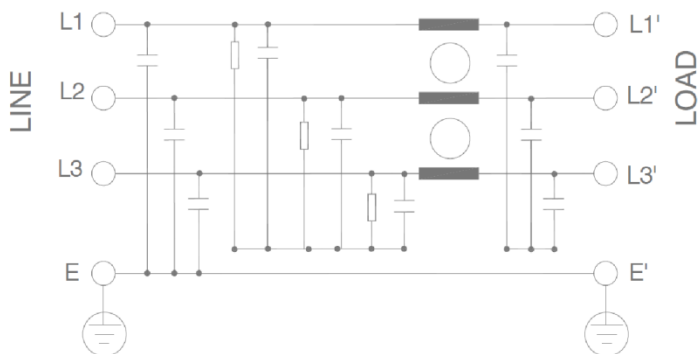
For touch safe terminal



All dimensions in mm
General tolerance = $\pm 2\%$

Electrical schematic for Single Stage Filter

General purpose –

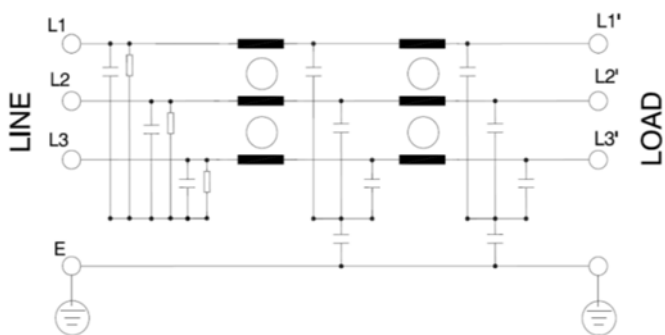




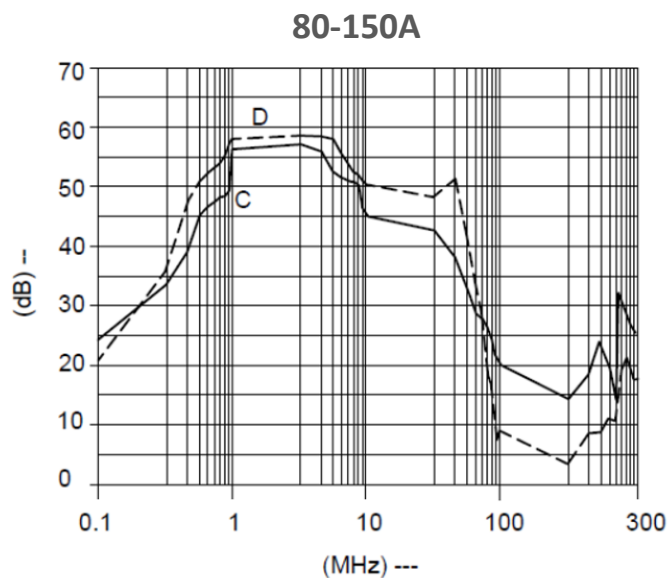
El.italia EC-EC55 serie

Electrical schematic for double stage filter

General Purpose -



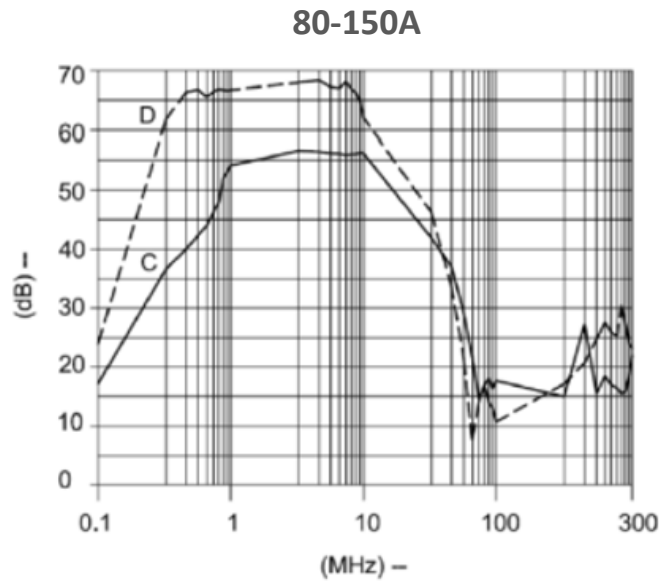
Graph for filter for Single Stage




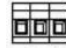


Graph for filter for Double Stage

El.italia EC-EC55 serie



Filter Selection Table

| Sr. No. | Elcom part codes (ordering code) | Rated Current rating (A) @40°C | Leakage current (mA) @250VAC | Terminals (X) | | Approx. Weight (Kg) | Attenuation |
|---------|----------------------------------|--------------------------------|------------------------------|---|---|---------------------|-------------|
| | | | | Screw  | Touch safe  | | |
| 1 | EF-3A080X01G-C55 | 80 | < 3.5 | D | F | 5 | Standard |
| 1 | EF-3A100X01G-C55 | 100 | < 3.5 | D | F | 5 | Standard |
| 2 | EF-3A120X01G-C55 | 120 | < 3.5 | D | F | 6 | Standard |
| 3 | EF-3A150X01G-C55 | 150 | < 3.5 | D | F | 6 | Standard |
| 4 | EF-3A080X20G-C55 | 80 | < 3.5 | D | F | 6 | High |
| 5 | EF-3A100X20G-C55 | 100 | < 3.5 | D | F | 6 | High |
| 6 | EF-3A120X20G-C55 | 120 | < 3.5 | D | F | 7 | High |
| 7 | EF-3A150X20G-C55 | 150 | < 3.5 | D | F | 7 | High |

- To compile complete part number, replace the 'X' with required I/O connection terminal. (e.g. EF-3A080D01G-C55)
- Maximum leakage under usual AC operating conditions (acc. IEC 60939-3). Note: if the neutral line is interrupted, worst case leakage could reach twice this level.
- Customize products provided on request.



Connection Type

El.italia EC-EC55 serie

| Current Rating (A) | Screw terminal details | | Touch safe terminal details | | Earthing screw terminal details |
|--------------------|------------------------|-------------------------------|-----------------------------|-------------------------------|---------------------------------|
| | Screw | Recommended tightening torque | Touch safe | Recommended tightening torque | |
| 80 | M8 | 25-30Kgcm | 16 sq.mm. | 22-25 lbf.in | M8 |
| 100 | M10 | 35-40Kgcm | 50 sq.mm. | 38-40 lbf.in | M10 |
| 120 | M10 | 35-40Kgcm | 50 sq.mm. | 38-40 lbf.in | M12 |
| 150 | M12 | 35-40Kgcm | 50 sq.mm. | 38-40 lbf.in | M12 |

Syntax

EF - 3A CCC X YY G - C55

