

High attenuation AC EMI Filter

El.italia EC-EC64 serie



Technical specifications

Operating voltage	440VAC (P-P)
Current rating	1700A-2000A
Frequency	50/60Hz
Voltage drop	1 Volt max.
High potential test voltage	P -> E 1500VAC
Insulation resistance	≥ 300 MΩ @ 500VDC (PN→E)
Operating temperature	40°C / -25°C +85°C

*Image shown is for illustrative purpose only

Features and benefits

- | Filters available in single & double stage
- | All filters provide high attenuation performance.
- | Two stage filters designed for noisy application requiring excellent filter performance.
- | All filters compliance to EN60939-3:2015 & EN60939-2:2005 standards.
- | High reliable
- | Easy and fast chassis mountable filter with compact size.
- | CRCA metal can with nickel plating provides good aesthetic and corrosion protection.

Attenuation Type

Single Stage	Standard
Double Stage	High

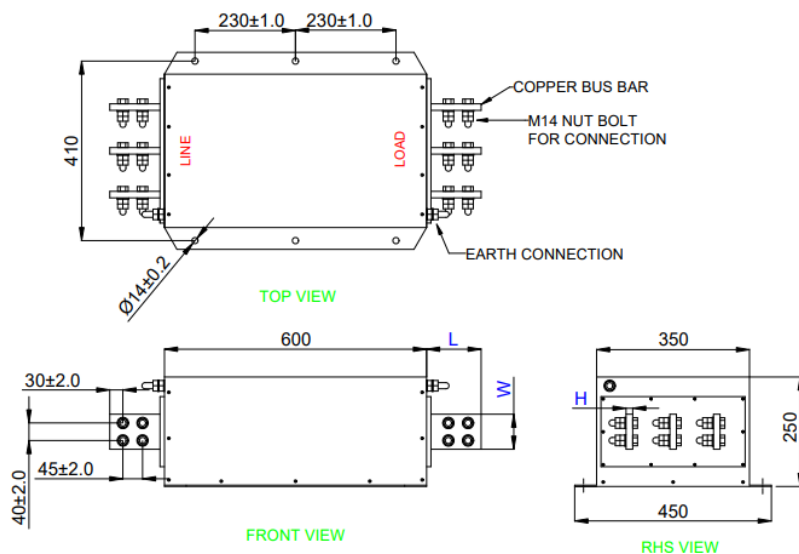
Applications

- | Consumer product
- | Defence application
- | Industrial application
- | Automotive application
- | Printing Machinery
- | Electrical equipment application

Mechanical details

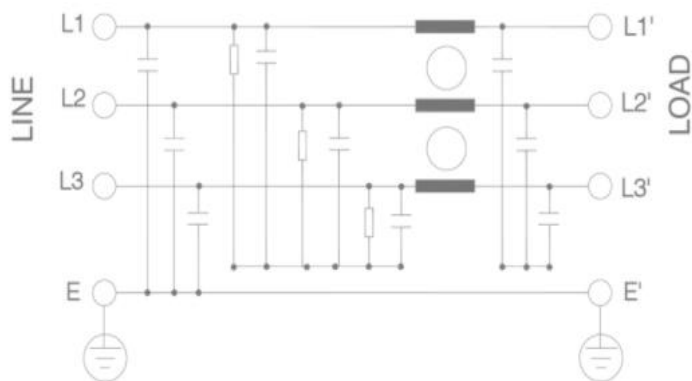
El.italia EC-EC64 serie

Busbar terminal



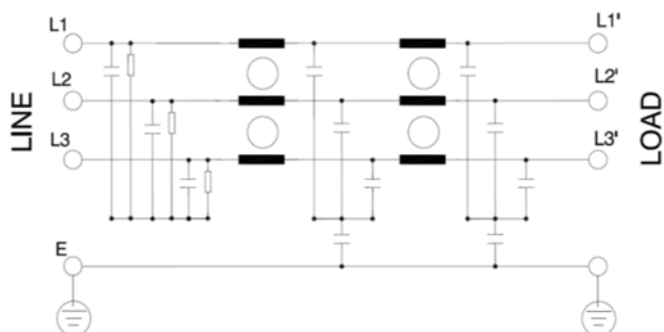
*All dimensions are in mm.
General tolerance=±2%

Electrical schematic for Single stage filter



El.italia EC-EC64 serie

Electrical schematic for Double stage filter



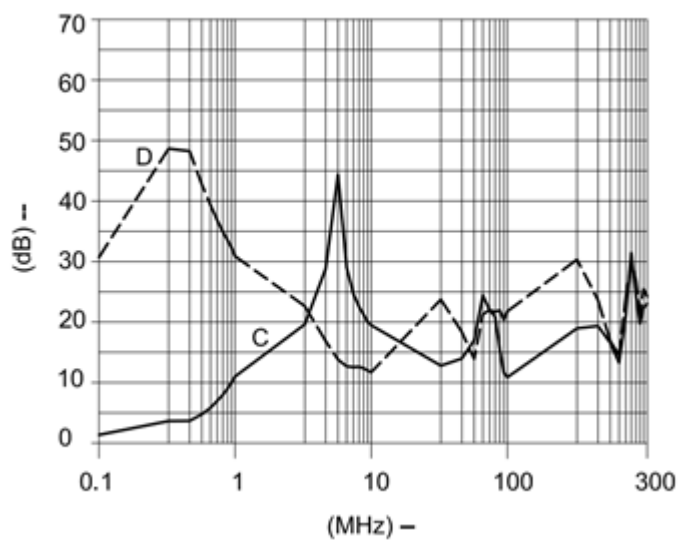
Filter attenuation graph

C = Common mode (asymmetrical)

D = Differential mode (symmetrical) -----


For single stage

For 1700-2000A



Filter Selection Table –

El.italia EC-EC64 serie

Sr. No.	Elcom part codes (ordering code)	Rated Current rating (A) @40°C	Leakage current (mA) @440VAC	Bus bar 	Attenuation
1	EF-3A1K7E01G-C64	1700	< 3.5	E	Standard
2	EF-3A1K8E01G-C64	1800	< 3.5	E	Standard
3	EF-3A1K9E01G-C64	1900	< 3.5	E	Standard
4	EF-3A2K0E01G-C64	2000	< 3.5	E	Standard
5	EF-3A1K7E20G-C64	1700	< 3.5	E	High
6	EF-3A1K8E20G-C64	1800	< 3.5	E	High
7	EF-3A1K9E20G-C64	1900	< 3.5	E	High
8	EF-3A2K0E20G-C64	2000	< 3.5	E	High

- Customize products provided on request.

Syntax

EF – 3A CCC X YY G – C64

