



El.italia EC-EC90 serie

General Purpose AC EMI Filter



Technical specifications

Operating voltage	250VAC(P-N)/440VAC(P-P)
Current rating	1600-2000A
Frequency	50/60Hz
Voltage drop	1 Volt max.
High potential test voltage	P -> E 1500VAC P -> N 2121VDC
Insulation resistance	≥ 300 MΩ @ 500VDC (PN→E)
Operating temperature	40°c /-25°c +85°c

Image shown is for illustrative purpose only

Features and benefits

- | Filters available in single stage
- | All filters provide high attenuation performance.
- | All filters compliance to EN60939-3:2015 & EN60939-2:2005 standards.
- | High reliable
- | Chassis mountable filter in fabricated metal can.
- | CRCA metal can with nickel plating provides good aesthetic and corrosion protection.

Attenuation Type

Single Stage **Standard**

Application

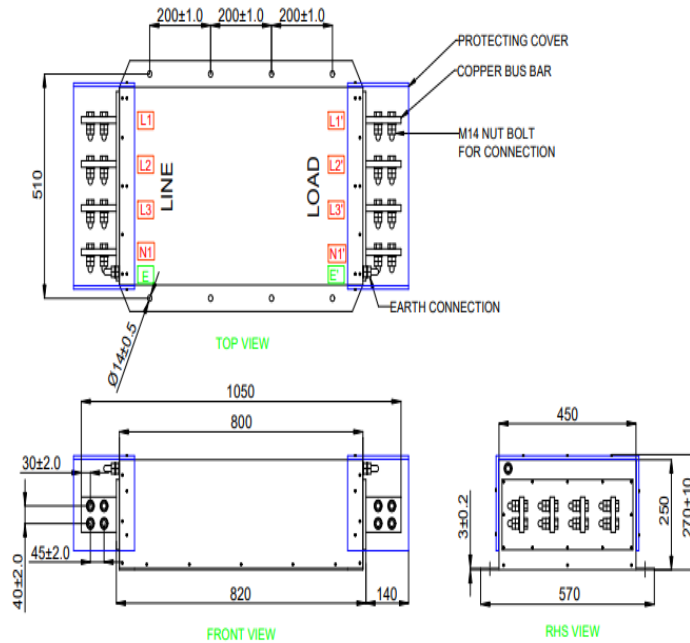
- | Defense application
- | Industrial application
- | UPS
- | Inverters and converters
- | Electrical equipment application
- | Laser cutting tools
- | Test and measurement instruments



El.italia EC-EC90 serie

Mechanical details

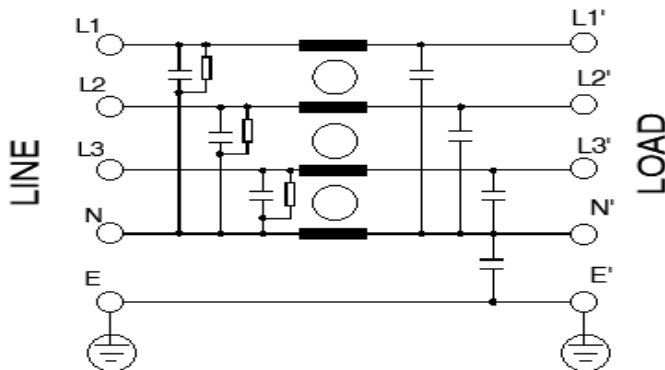
For bus bar terminal



All dimensions in mm
*Note-General tolerance = ±2%

Electrical schematic for Single Stage Filter

General purpose -





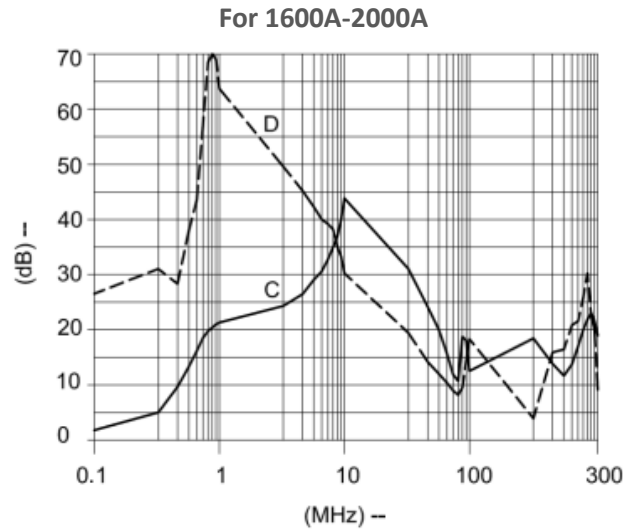
El.italia EC-EC90 serie

Filter attenuation Graph


C = Common mode (asymmetrical) -----

D = Differential mode (symmetrical) -----

For general application (Single Stage)



Filter Selection Table

Sr. No.	Elcom part codes (ordering code)	Rated Current rating (A) @40°C	Leakage current (mA) @440VAC	Terminals (X)	Attenuation
				Bus bar 	
1	EF-3P1K6E01G-C90	1600	< 3.5	E	Standard
2	EF-3P1K7E01G-C90	1700	< 3.5	E	Standard
3	EF-3P1K8E01G-C90	1800	< 3.5	E	Standard
4	EF-3P1K9E01G-C90	1900	< 3.5	E	Standard
5	EF-3P2K0E01G-C90	2000	< 3.5	E	Standard

- To compile complete part number, replace the 'X' with required I/O connection terminal. (e.g. EF-3P1K8E01E-C90)
- Maximum leakage under usual AC operating conditions (acc. IEC 60939-3). Note: if the neutral line is interrupted, worst case leakage could reach twice this level.
- Customize products provided on request.



El.italia EC-EC90 serie

Syntax

EF - 3P CCC X YY G - C90

