

## El.italia EC-EC92 serie

### High performance AC EMI Filter



Image shown is for illustrative purpose only



### Technical specifications

Operating voltage	250VAC(P-N)/440VAC(P-P)
Current rating	50A-60A
Frequency	50/60Hz
Voltage drop	1 Volt max.
High potential test voltage	P -> E 1500VAC P -> N 2121VDC
Insulation resistance	≥ 300 MΩ @ 500VDC (PN→E)
Operating temperature	40°C / -25°C +85°C

### Features and benefits

- | Filters available in single & double stage
- | All filters provide high attenuation performance.
- | All filters compliance to EN60939-3:2015 & EN60939-2:2005 standards.
- | High reliable
- | Chassis mountable filter in fabricated metal can.
- | CRCA metal can with nickel plating provides good aesthetic and corrosion protection.
- | Various terminal options are available.

### Attenuation Type

Single Stage	Standard
Double Stage	High

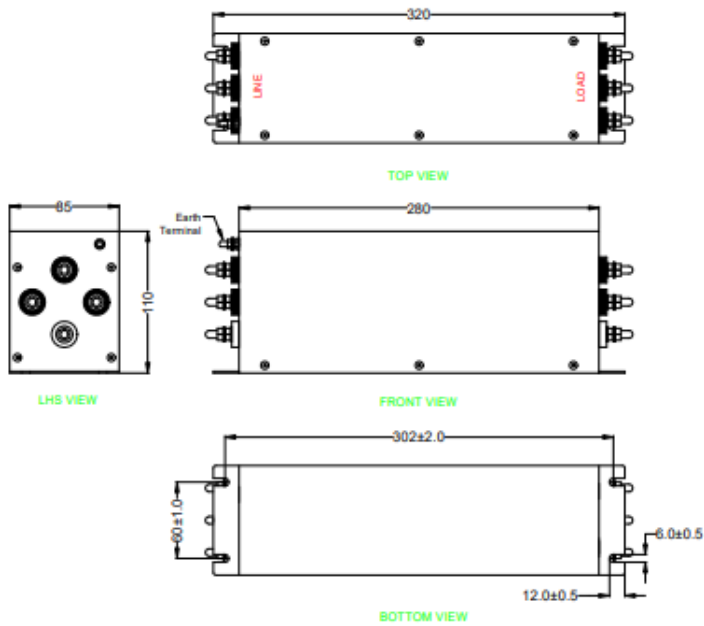
### Application

- | Defence application
- | Industrial application
- | UPS
- | Inverters and converters
- | Electrical equipment application
- | Laser cutting tools
- | Test and measurement instruments

## El.italia EC-EC92 serie

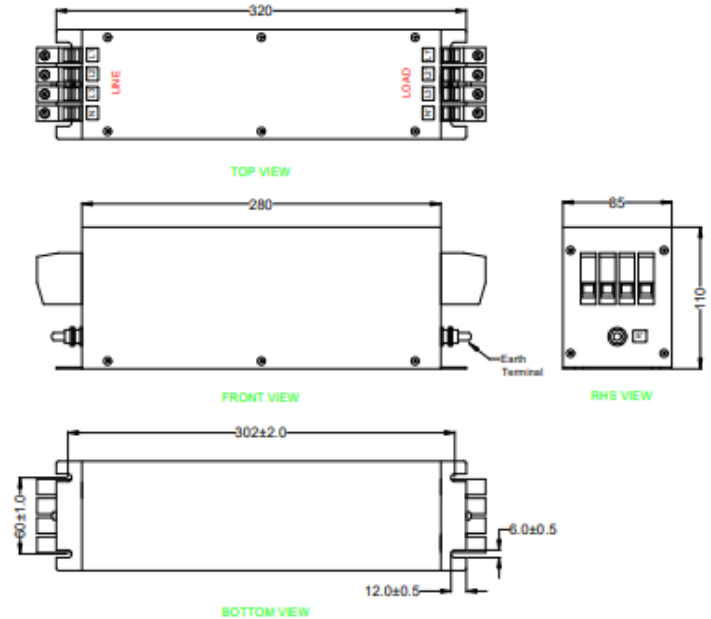
### Mechanical details

| For screw terminal



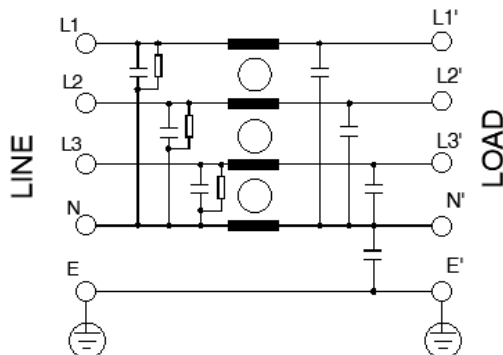
All dimensions in mm  
Note-General tolerance =±2%

| For touch safe terminal



All dimensions in mm  
\*Note-General tolerance =±2%

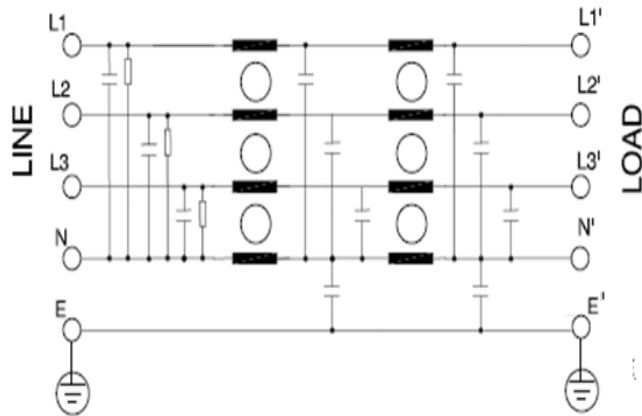
### Electrical schematic for Single Stage Filter General purpose –



## El.italia EC-EC92 serie

### Electrical schematic for Double Stage Filter

General purpose -

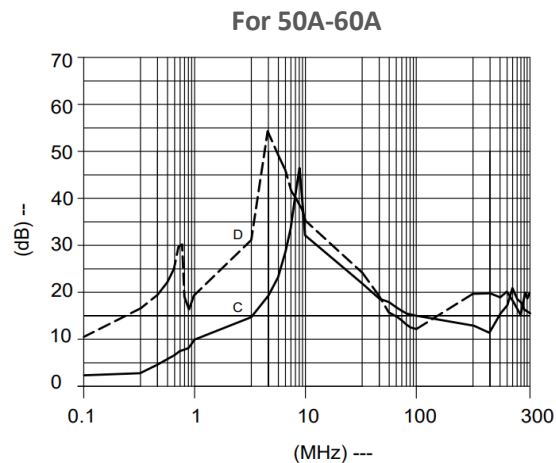


### Filter attenuation Graph

C = Common mode (asymmetrical) —————

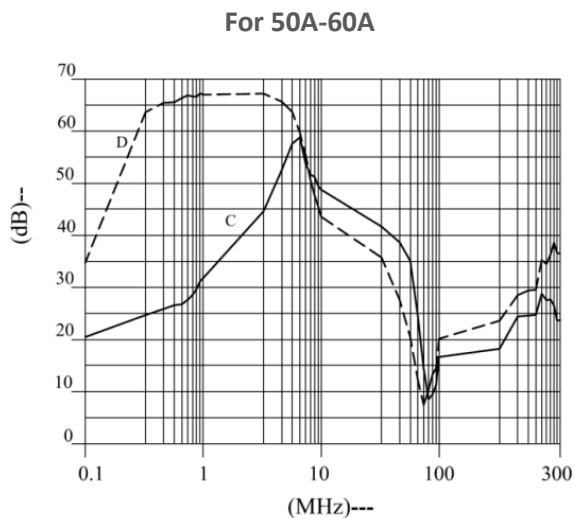
D = Differential mode (symmetrical) -----

For general application (Single Stage)





For general application (double Stage)

**El.italia EC-EC92 serie**



## Filter Selection Table

Sr. No.	Elcom part codes (ordering code)	Rated Current rating (A) @40°C	Leakage current (mA) @440VAC	Terminals (X)		Weight (Kg)	Attenuation
				Screw 	Touch-safe 		
1	EF-3P050X01G-C92	50	< 3.5	D	F	2.5	Standard
2	EF-3P060X01G-C92	60	< 3.5	D	F	2.5	Standard
3	EF-3P050X20G-C92	50	< 3.5	D	F	2.5	High
4	EF-3P060X20G-C92	60	< 3.5	D	F	2.5	High

- To compile complete part number, replace the 'X' with required I/O connection terminal. (e.g. EF-3P050D01G-C92)
- Customize products provided on request.

## Connection Type

## El.italia EC-EC92 serie

Current Rating (A)	Screw terminal details		Touch safe terminal details		Earthing screw terminal details
	Screw	Recommended tightening torque	Touch safe	Recommended tightening torque	
50	M6	20-25Kgcm	16 Sq.mm	22-25 lbf.in	M6
60	M6	20-25Kgcm	16 Sq.mm	22-25 lbf.in	M6

## Syntax

EF - 3P CCC X YY G - C92

