

General Purpose AC EMI Filter

El.italia EC-EE03 serie



Technical specifications

Operating voltage	120/250 VAC
Current rating	1A-10A
Frequency	50/60Hz
Voltage drop	1 Volt max.
High potential test voltage	P -> E 1500VAC P -> N 1414VDC (applicable for excluding surge suppressor filter)
Insulation resistance	$\geq 300 \text{ M}\Omega$ @ 500VDC (PN→E)
Operating temperature	40°C / -25°C +85°C



*Image shown is for illustrative purpose only

Attenuation Type

Single Stage

Standard

Applications

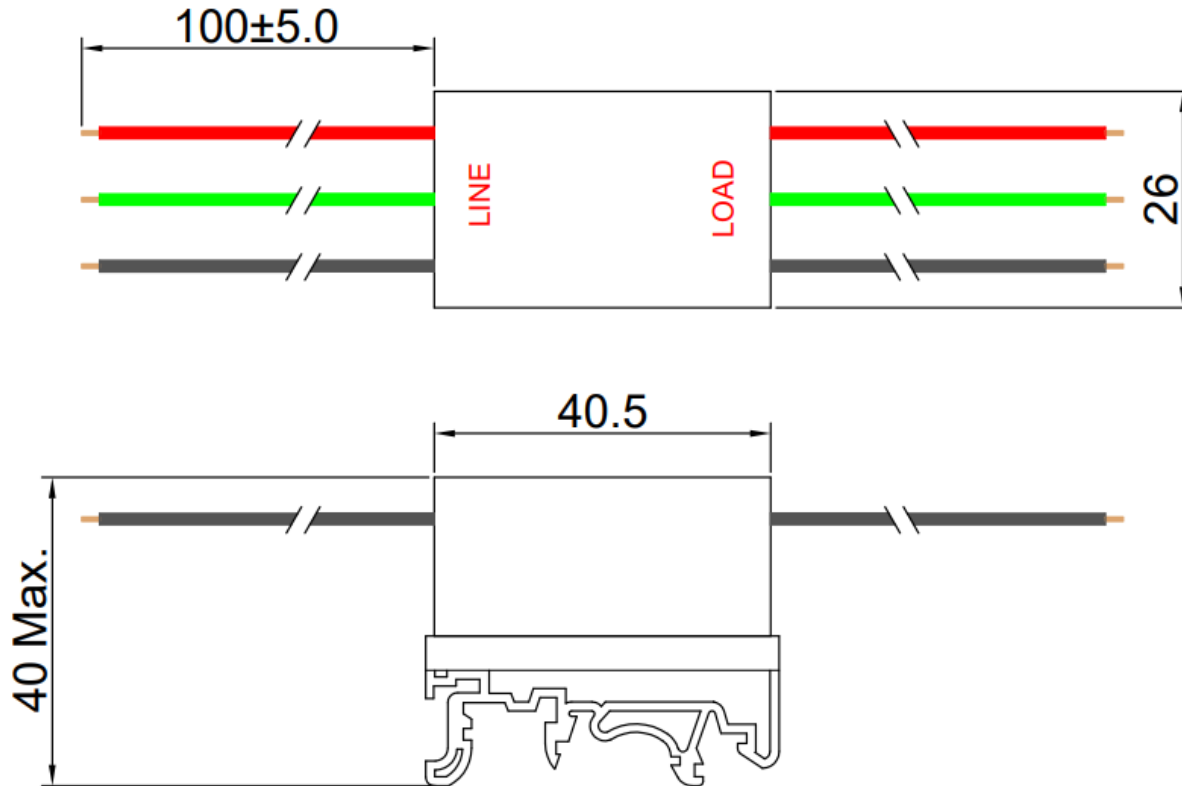
- | Electrical and electronic equipment
- | Consumer product
- | Medical equipment
- | SMPS
- | Test & measurement equipment
- | Small to medium-sized machines and household equipment
- | Office automation equipment

Features and benefits

- | All filters provide high attenuation performance.
- | All filters compliance to EN60939-3:2015 & EN60939- 2:2005 standards.
- | Compact drill rail mounting design.
- | High reliable.
- | Plastic housing with good aesthetic.
- | Single stage.
- | Input and output connection through wire
- | Filters available in medical version without capacitor to earth.
- | With surge suppressor filters also available.
- | Cost effective solution.

Mechanical details

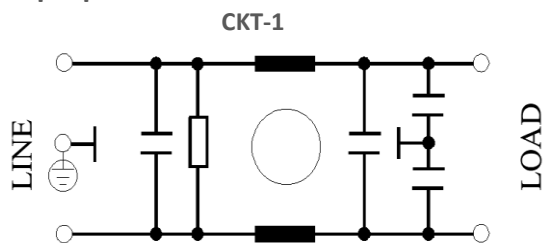
El.italia EC-EE03 serie



All dimensions in mm
General tolerance=±2%

Electrical schematic for Single Stage Filter

General purpose –



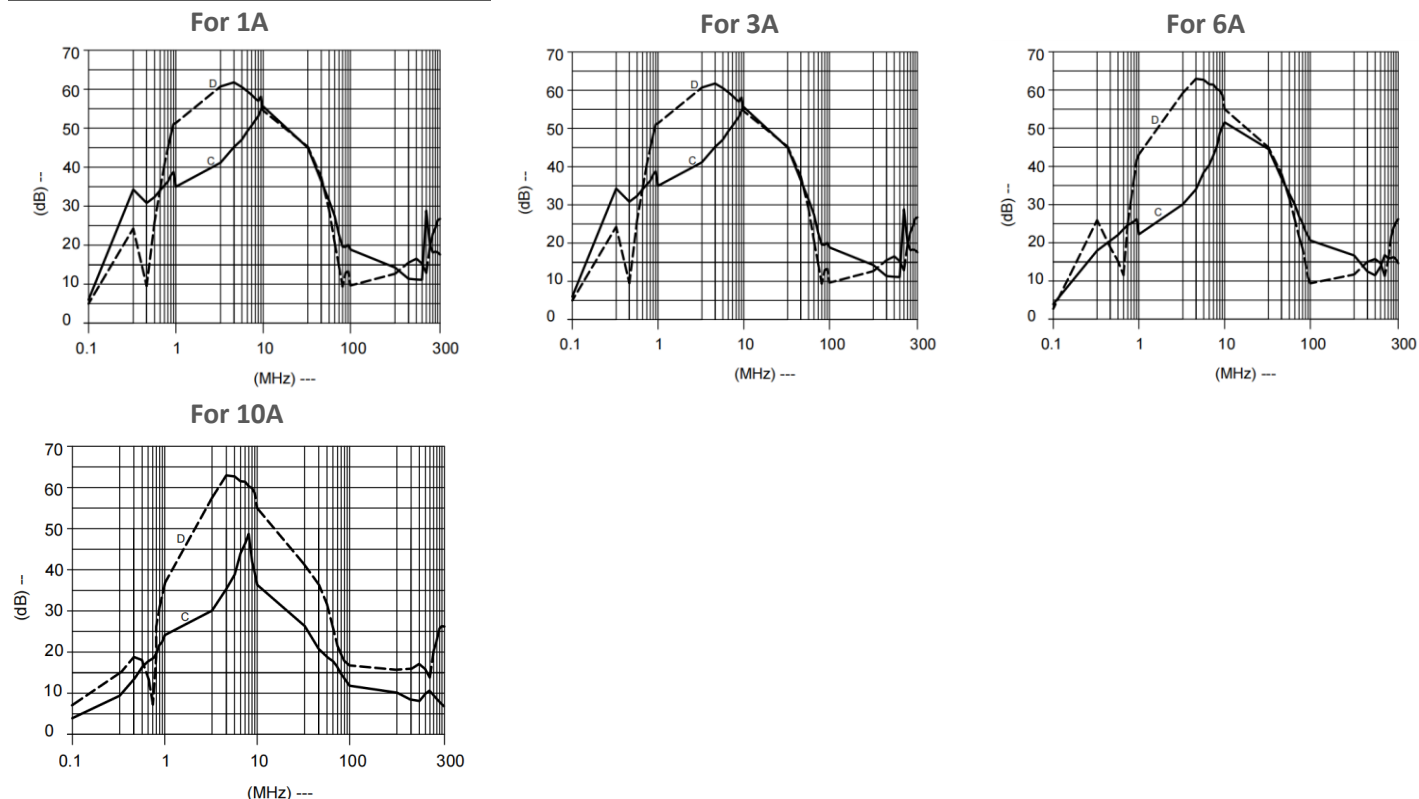
El.italia EC-EE03 serie

Filter attenuation Graph


C = Common mode (asymmetrical) —————

D = Differential mode (symmetrical) -----

For general application (Single Stage)



Filter Selection Table

Sr. No.	Elcom part codes (ordering code)	Rated Current rating (A) @40°C	Leakage current (mA) @250VAC	Terminal	Approx. Weight (gm)	Attenuation
				Wire 		
1	EF-1B001G01G-E03	1	< 0.5	G	75	Standard
2	EF-1B003G01G-E03	3	< 0.5	G	75	Standard
3	EF-1B006G01G-E03	6	< 0.5	G	75	Standard
4	EF-1B010G01G-E03	10	< 0.5	G	75	Standard



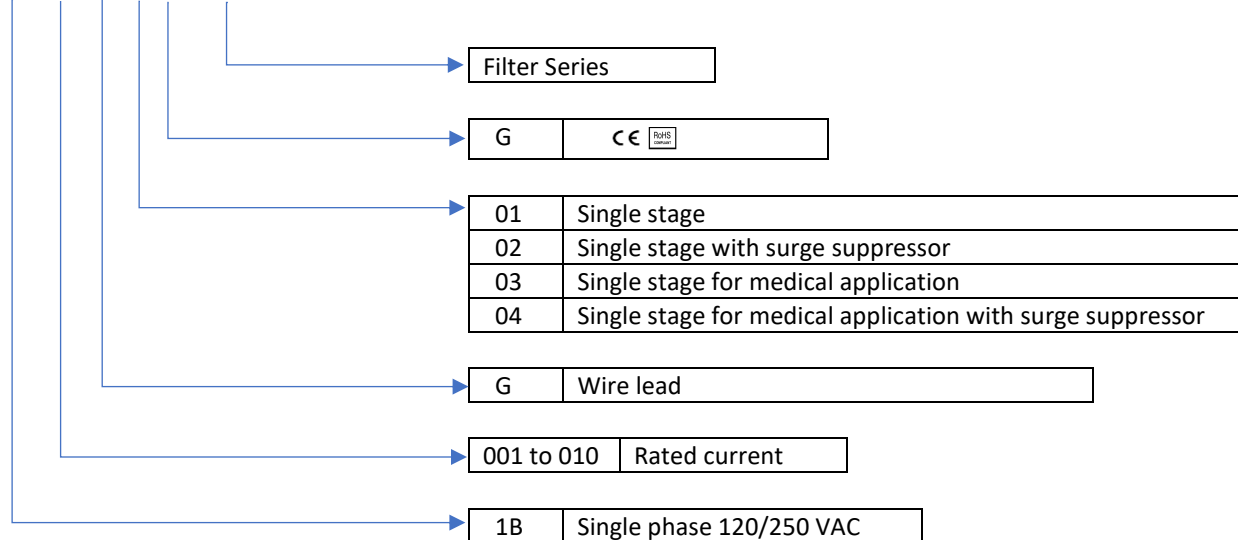


Connection Type

Current Rating (A)	Wire terminal	Earthing
1 & 3	0.5 sqmm	Wire lead
6	0.75 sqmm	
10	1 sqmm	

Syntax

EF – 1B CCC X YY G – E03



- To compile complete part number, replace the 'X' with required I/O connection terminal. (e.g. EF-1B001G01G-E03).
- Maximum leakage under usual AC operating conditions (acc. IEC 60939-3). Note: if the neutral line is interrupted, worst case leakage could reach twice this level
- Customize products provided on request.