

General Purpose AC EMI Filter



*Image shown is for illustrative purpose only

El.italia EC-EE05 serie



Technical specifications

Operating voltage	120/250 VAC
Current rating	1A-10A
Frequency	50/60Hz
Voltage drop	1 Volt max.
High potential test voltage	P -> E 1500VAC P -> N 1414VDC (applicable for excluding surge suppressor filter)
Insulation resistance	≥ 300 MΩ @ 500VDC (PN→E)
Operating temperature	40°C / -25°C +85°C

Features and benefits

- | Filters available in single stage.
- | All filters provide high attenuation performance.
- | All filters compliance to EN60939-3:2015 & EN60939-2:2005 standards.
- | High reliable
- | Easy and fast din rail mounting filter with compact size.
- | CRCA metal can with nickel plating provides good aesthetic and corrosion protection.
- | Filters available in medical version without capacitor to earth.
- | General purpose filters with low leakage current for safety critical application.
- | With surge suppressor filters also available.

Attenuation Type

Single Stage

Standard

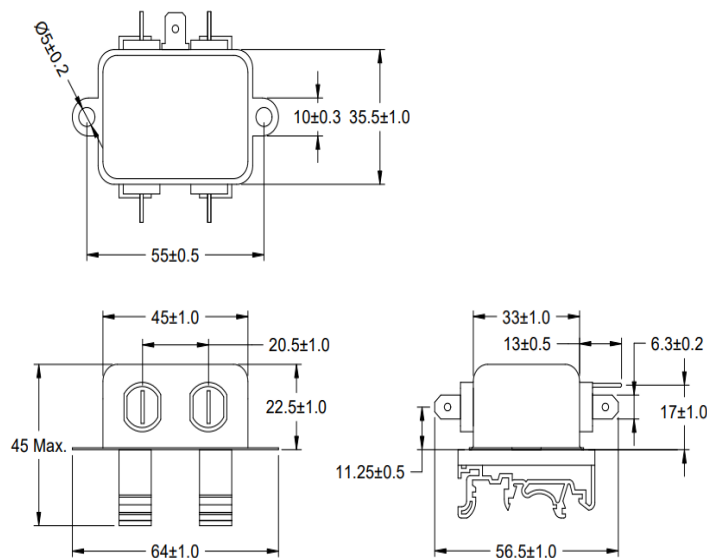
Applications

- | Medical equipment
- | Industrial application
- | Automotive application
- | Electrical equipment application
- | Office automation equipment

Mechanical details

El.italia EC-EE05 serie

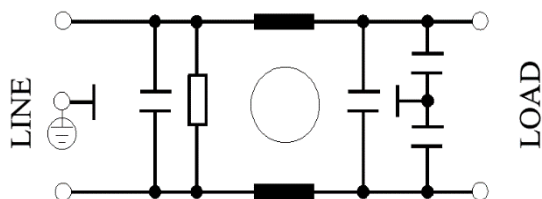
| For fast-on terminal



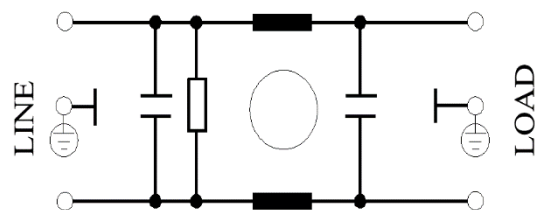
All dimensions in mm

Electrical schematic for Single Stage Filter

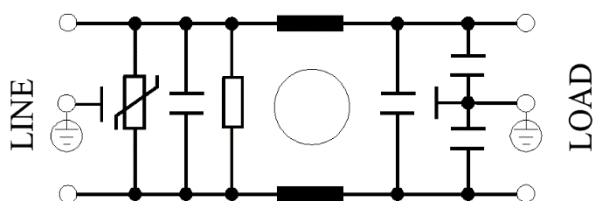
General purpose –



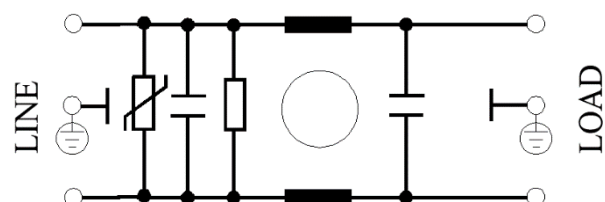
Medical equipment application -



General purpose with Surge Suppressor -



Medical application with Surge Suppressor -

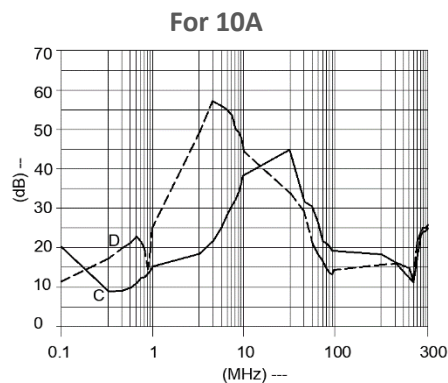
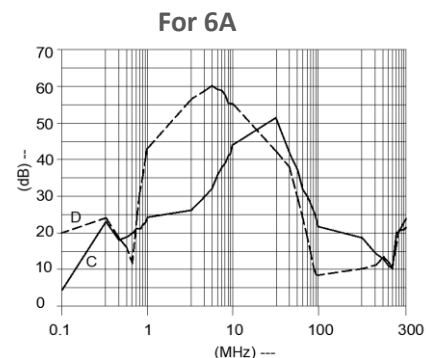
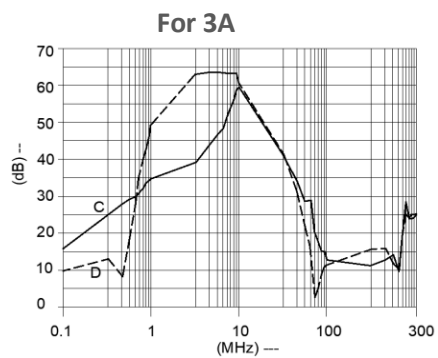
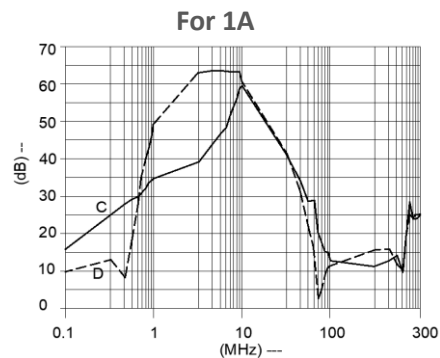


Filter attenuation Graph

C = Common mode (asymmetrical) —————
D = Differential mode (symmetrical) - - - - -

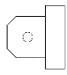
El.italia EC-EE05 serie

For general application (Single Stage)



Filter Selection Table

El.italia EC-EE05 serie

Sr. No.	Elcom part codes (ordering code)	Rated Current rating (A) @40°C	Leakage current (mA) @250VAC	Terminals (X)	Approx. Weight (gm)	Attenuation
				Fast-on 		
1	EF-1B001B01G-E05	1	< 0.5	B	120	Standard
2	EF-1B001B02G-E05	1	< 0.5	B	120	Standard
3	EF-1B001B03G-E05	1	< 0.003	B	120	Standard
4	EF-1B001B04G-E05	1	< 0.003	B	120	Standard
5	EF-1B003B01G-E05	3	< 0.5	B	120	Standard
6	EF-1B003B02G-E05	3	< 0.5	B	120	Standard
7	EF-1B003B03G-E05	3	< 0.003	B	120	Standard
8	EF-1B003B04G-E05	3	< 0.003	B	120	Standard
9	EF-1B006B01G-E05	6	< 0.5	B	120	Standard
10	EF-1B006B02G-E05	6	< 0.5	B	120	Standard
11	EF-1B006B03G-E05	6	< 0.003	B	120	Standard
12	EF-1B006B04G-E05	6	< 0.003	B	120	Standard
13	EF-1B010B01G-E05	10	< 0.5	B	120	Standard
14	EF-1B010B02G-E05	10	< 0.5	B	120	Standard
15	EF-1B010B03G-E05	10	< 0.003	B	120	Standard
16	EF-1B010B04G-E05	10	< 0.003	B	120	Standard

- To compile complete part number, replace the 'X' with required I/O connection terminal. (e.g. EF-1B001B01G-E05).
- Maximum leakage under usual AC operating conditions (acc. IEC 60939-3). Note: if the neutral line is interrupted, worst case leakage could reach twice this level.
- Customize products provided on request.

Connection Type

El.italia EC-EE05 serie

Current Rating (A)	Input & output terminal
1A-10A	Fast -on 6.3 X 0.8mm

Syntax

EF - 1B CCC X YY G - E05

