

## General Purpose AC EMI Filter



\*Image shown is for illustrative purpose only

**El.italia EC-EE06 serie**



## Technical specifications

Operating voltage	120/250 VAC
Current rating	1A-20A
Frequency	50/60Hz
Voltage drop	1 Volt max.
High potential test voltage	P -> E 1500VAC P -> N 1414VDC (applicable for excluding surge suppressor filter)
Insulation resistance	≥ 300 MΩ @ 500VDC (PN→E)
Operating temperature	40°C / -25°C +85°C

## Features and benefits

- | Filters available in single stage and double stage
- | All filters provide high attenuation performance.
- | Two stage filters designed for noisy application requiring excellent filter performance.
- | All filters compliance to EN60939-3:2015 & EN60939-2:2005 standards.
- | High reliable
- | Easy and fast drill rail mounting filter with compact size.
- | CRCA metal can with nickel plating provides good aesthetic and corrosion protection.
- | Filters available in medical version without capacitor to earth.
- | General purpose filters with low leakage current for safety critical application.
- | With surge suppressor filters also available.

## Attenuation Type

Single Stage	Standard
Double Stage	High

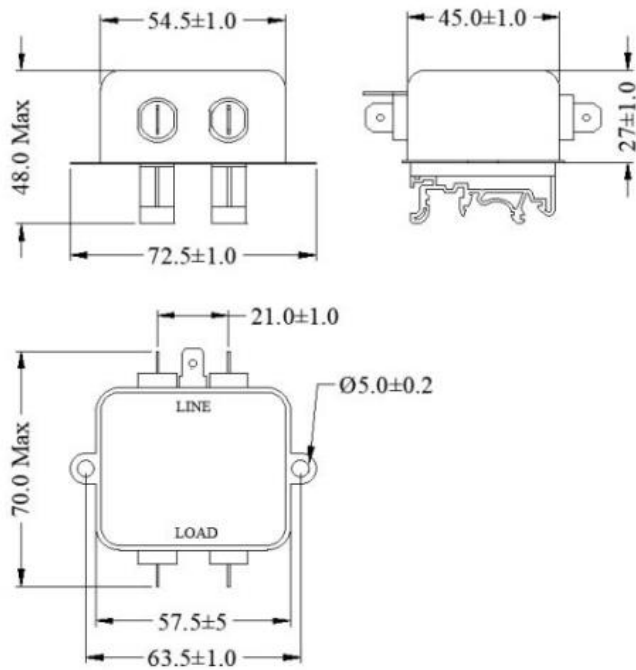
## Applications

- | Consumer product
- | Defence application
- | Medical equipment
- | Industrial application
- | Automotive application
- | Weighting Machines
- | Printing Machinery
- | Electrical equipment application
- | Office automation equipment

## Mechanical details

## El.italia EC-EE06 serie

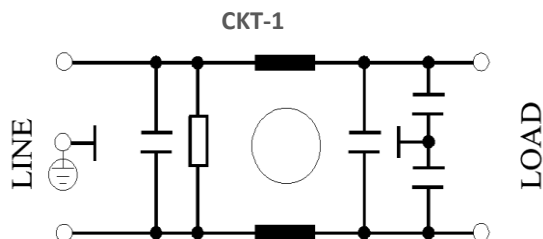
For fast-on terminal



All dimensions in mm

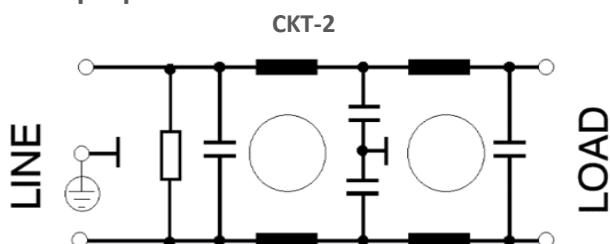
## Electrical schematic for Single Stage Filter

General purpose –



## Electrical schematic for Double Stage Filter

General purpose –



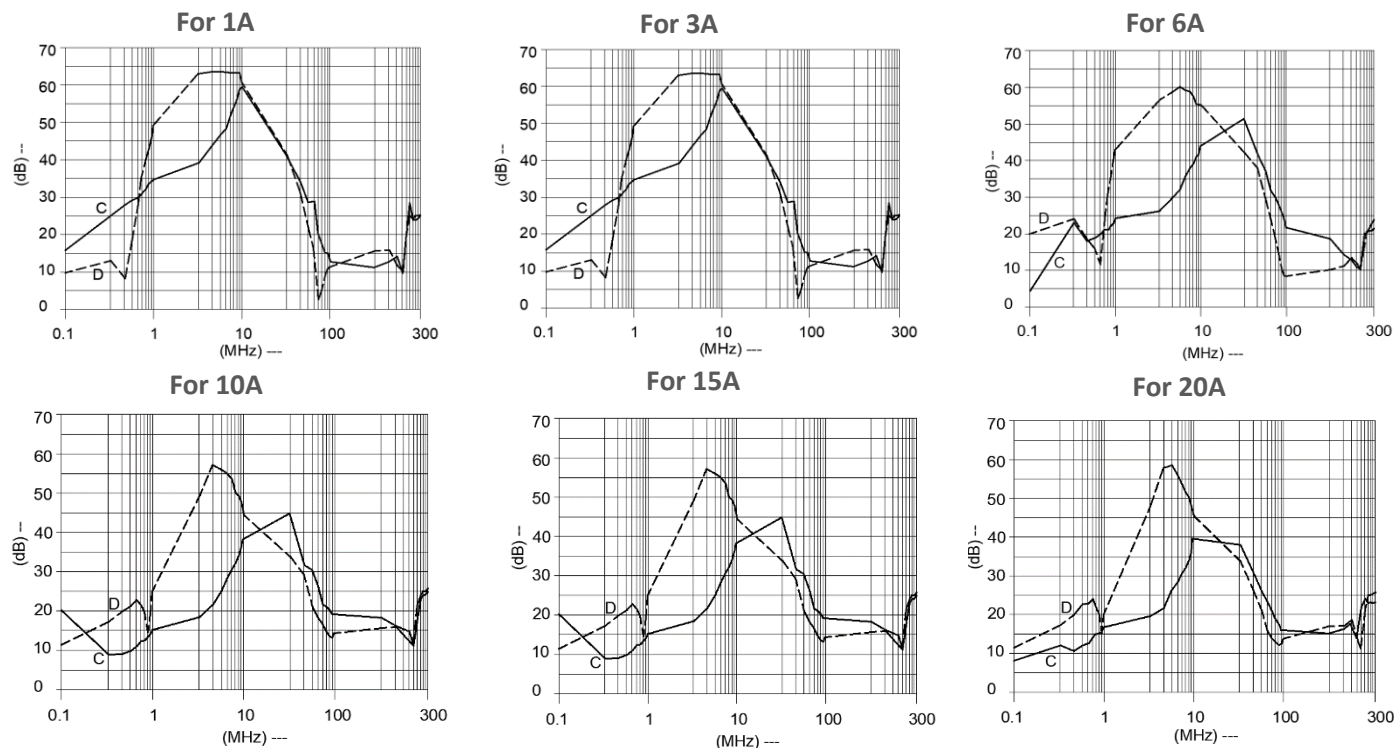
## El.italia EC-EE06 serie

### Filter attenuation Graph

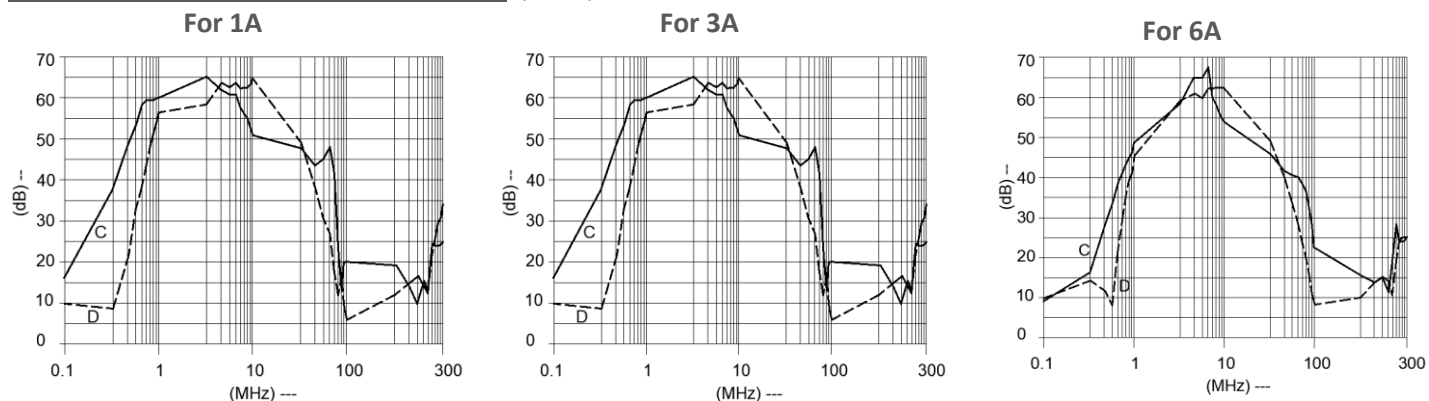
C = Common mode (asymmetrical) —————

D = Differential mode (symmetrical) - - - - -

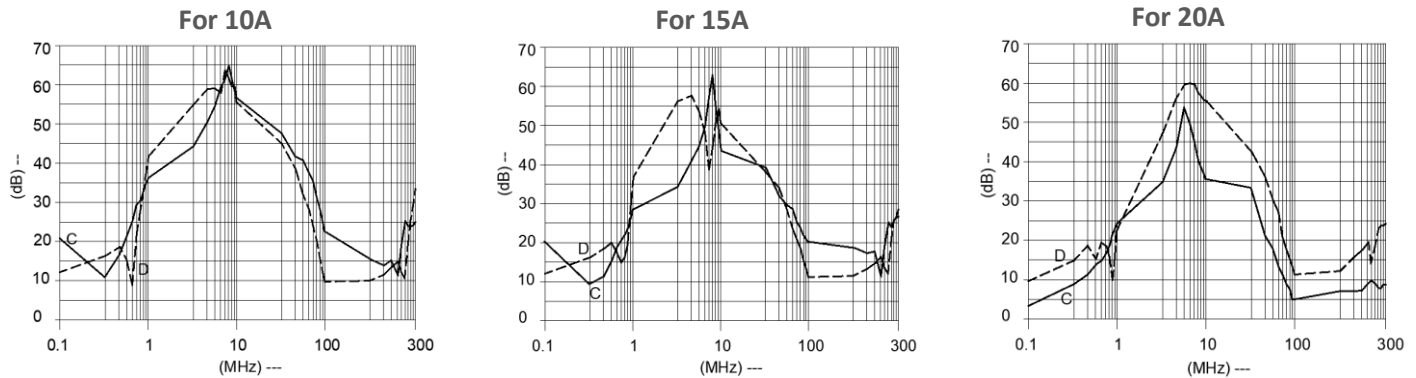
#### For general application (Single Stage) (CKT 1)



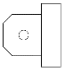
#### For general application (Double Stage) (CKT 2)



## El.italia EC-EE06 serie



### Filter Selection Table

Sr. No.	Elcom part codes (ordering code)	Rated Current rating (A) @40°C	Leakage current (mA) @250VAC	Terminals	Approx. Weight (gm)	Attenuation
				(X) Fast-on 		
1	EF-1B001B01G-E06	1	< 0.5	B	150	Standard
2	EF-1B003B01G-E06	3	< 0.5	B	150	Standard
3	EF-1B006B01G-E06	6	< 0.5	B	150	Standard
4	EF-1B010B01G-E06	10	< 0.5	B	150	Standard
5	EF-1B015B01G-E06	15	< 0.5	B	150	Standard
6	EF-1B020B01G-E06	20	< 0.5	B	150	Standard
7	EF-1B001B20G-E06	1	< 0.5	B	150	High
8	EF-1B003B20G-E06	3	< 0.5	B	150	High
9	EF-1B006B20G-E06	6	< 0.5	B	150	High
10	EF-1B010B20G-E06	10	< 0.5	B	150	High
11	EF-1B015B20G-E06	15	< 0.5	B	150	High
12	EF-1B020B20G-E06	20	< 0.5	B	150	High

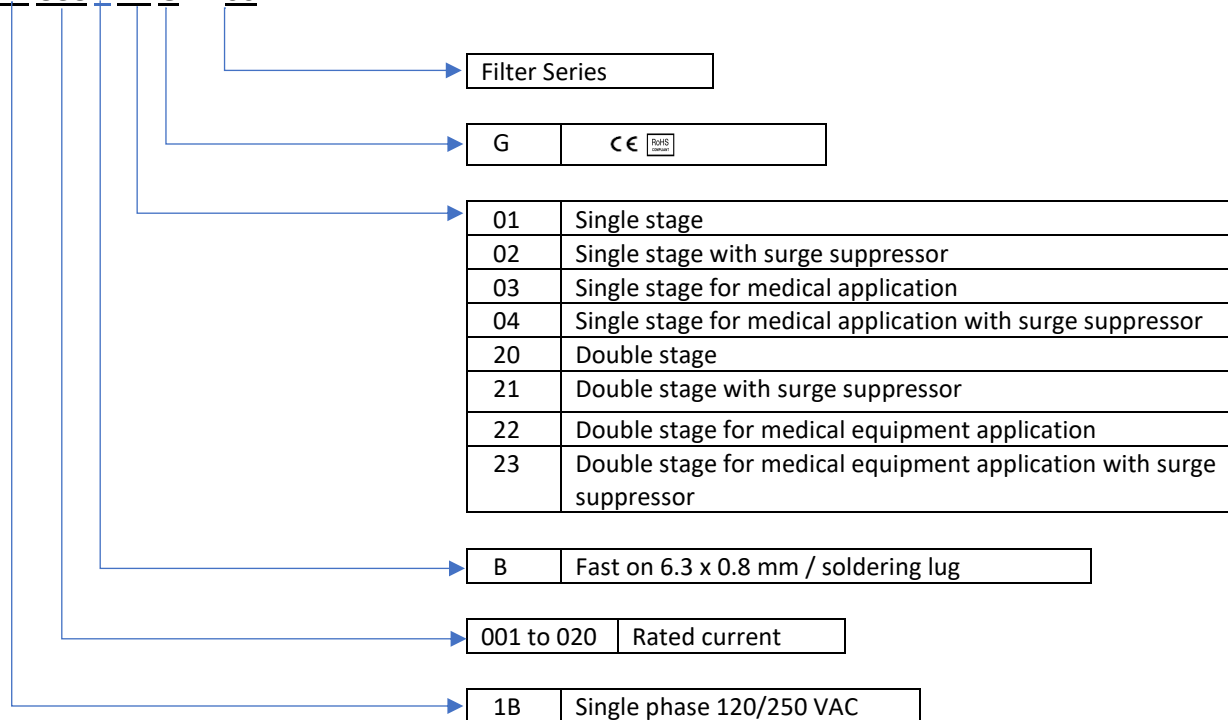
## Connection Type

*El.italia EC-EE06 serie*

Current Rating (A)	Fast -on terminal	Earthing
1A-20A	6.3 X 0.8mm	Fast-on

## Syntax

**EF - 1B CCC X YY G - E06**



- To compile complete part number, replace the 'X' with required I/O connection terminal. (e.g. EF-1B001B20G-E06).
- Maximum leakage under usual AC operating conditions (acc. IEC 60939-3). Note: if the neutral line is interrupted, worst case leakage could reach twice this level.
- Customize products provided on request.