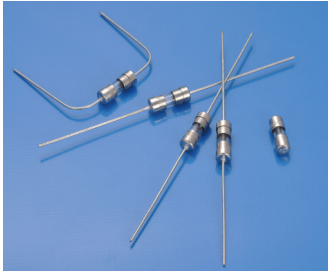
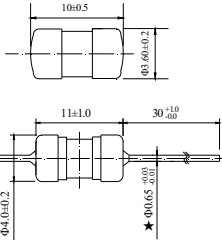


311 Subminiature Cartridge Fuse



Dimensions (unit in mm)



- ★ 250mA~7A: Ø0.65mm
- 8A~12A: Ø0.80mm

Main Characteristics

Subminiature Cartridge fuse; fast- Acting(F)

Standard

UL248-14

Materials

- Tube: Glass Tube
- End Caps: Nickel plated brass
- Axial Leads: Nickel plated caps
- Tin plated copper wires

Operating Temperature

-55°C to +125°C

Storage Conditions

- +10°C to +60°C
- Relative humidity: ≤75% yearly average
- Without dew, maximum 30 days at 95%

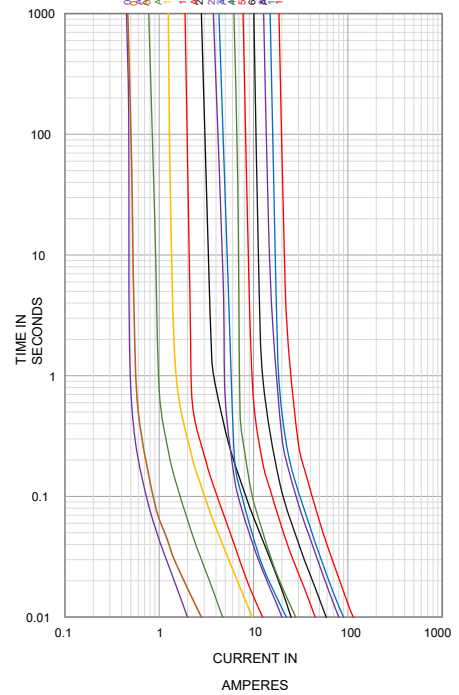
Vibration Resistance

- 120 cycles in 1 direction at 1 min. each
- 10-55Hz, 3 directions(X, Y, Z) in total
- According to MIL-STD-202 Method 201A

Soldering Parameters

- 260°C. ≤5 sec (Wave Soldering)
- 350°C. ≤3 sec (Hand Soldering)
- Soldering Peak:
- 260°C. 10 sec. (IEC 60068-20)

Average Current Curve(I-T Curve)



Time vs Current Characteristics: UL248-14

Rated Current	100%	200%
250mA~12A	>4h	<5s



Electrical Characteristics at 25°C

Amp Code	Rated Current	Rated Voltage	Typical cold Resistance (mΩ)	Nominal Melting I ² t(A ² sec)	Breaking Capacity	Approvals	
						cULus	
						125V	250V
0250	250mA	250V AC	540	0.040	50A @ 250V AC 50A @ 125V AC	•	•
0300	300mA		335	0.078		•	•
0500	500mA		182	0.225		•	•
0630	630mA		145	0.357		•	•
0800	800mA		131	0.576		•	•
1100	1.00A		70.0	0.940		•	•
1125	1.25A		62.8	1.56		•	•
1150	1.50A		52.0	3.45		•	•
1200	2.00A		31.5	6.25		•	•
1250	2.50A		32.3	4.00		•	•
1300	3.00A		22.0	11.9		•	•
1315	3.15A		23.1	4.97		•	•
1400	4.00A		15.5	7.84		•	•
1500	5.00A		12.0	20.3		•	•
1630	6.30A		9.73	34.5		•	•
1700	7.00A		8.20	48.8		•	•
1800	8.00A		7.80	64.0		•	•
2100	10.00A		6.31	81.0		•	•
2120	12.00A		5.31	132		○	○

Note: 1. Permissible continuous operating current is 100% at ambient temperature of 23°C (73.4°F)
 2. The current values used for calculating I²T should be within the standard range of 8ms ~ 10ms.

Ordering Information

Series	Amp Code	Supplementary Code	Qty
311			