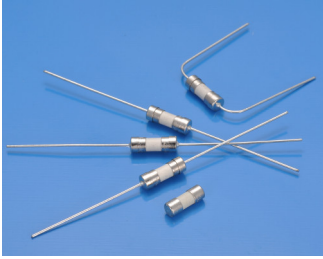


# 333 Subminiature Cartridge Fuse



## Main Characteristics

Subminiature Cartridge fuse; Fast-Acting (F)

## Standard

IEC-60127-3/III

## Materials

Tube: Ceramic Tube  
End Caps: Nickel plated brass  
Axial Leads: Nickel plated caps  
Tin plated copper wires

## Operating Temperature

-55°C to +125°C

## Storage Conditions

+10°C to +60°C  
Relative humidity: ≤75% yearly average  
Without dew, maximum 30 days at 95%

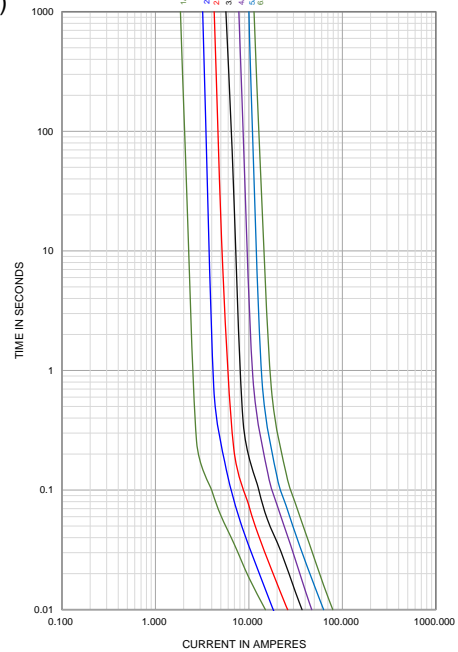
## Vibration Resistance

120 cycles in 1 direction at 1 min. each  
10-55Hz, 3 directions(X, Y, Z) in total  
According to MIL-STD-202 Method 201A

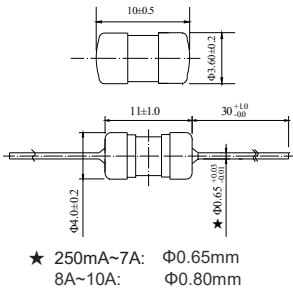
## Soldering Parameters

260°C. ≤5 sec (Wave Soldering)  
350°C. ≤3 sec (Hand Soldering)  
Soldering Peak:  
260°C. 10 sec. (IEC 60068-20)

Average Current Curve(I-T Curve)



Dimensions (unit in mm)



★ 250mA~7A: Φ0.65mm  
8A~10A: Φ0.80mm

Time vs Current Characteristics: IEC-60127-3/III

Rated current	150%	210%	275%	400%	1000%
50mA~5A	>1h	<30min	10ms~3s	3ms~300ms	≤20ms
6.3A~10A	>1h	<30min	50ms~10s	5ms~400ms	≤20ms



Electrical Characteristics at 25°C

Amp Code	Rated Current	Rated Voltage	Max Voltage Drop(mV)	Max. Power Dissipation (mW)	Typical Cold Resistance (mΩ)	Nominal Melting I²t(A²sec)	Breaking Capacity	Approvals	
								cULus	TUV
0315	315mA	250V AC	400	331	201.0	0.152	50A @ 250V AC 50A @ 125V AC 35A or 10In/250V AC	•	○
0750	750mA		310	630	133.9	0.941		•	○
1100	1.00A		280	375	63.8	2.25		•	○
1150	1.50A		250	1050	36.7	2.77		•	○
1200	2.00A		240	1260	25.2	3.20		•	•
1250	2.50A		200	1313	21.0	6.75		•	○
1315	3.15A		180	1488	14.6	13.69		•	○
1400	4.00A		160	1680	10.9	20.09		•	○
1500	5.00A		150	1969	8.33	39.69		•	○
1630	6.30A		150	1969	7.00	62.41		•	•
1800	8.00A		150	1969	5.80	92.16		•	○
2100	10.00A		150	1969	4.73	156.3		50A @ 250V AC 50A @ 125V AC	•

**Note:** (1) Permissible continuous operating current is ≤100% at ambient temperature of 23°C (73.4°F)  
(2) The cULus certification by 125V and 250V; the others certification by 250V.

## Ordering Information

Series	Amp Code	Supplementary Code	Qty
333			