

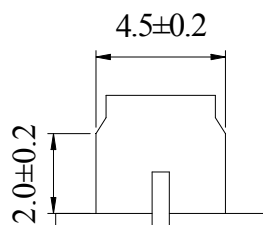
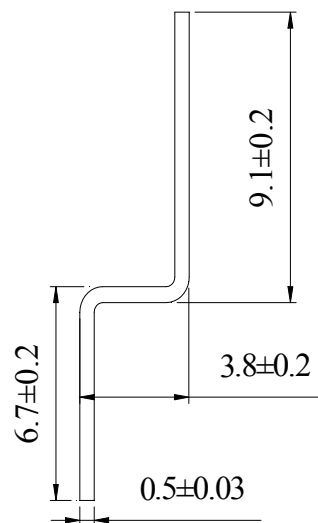
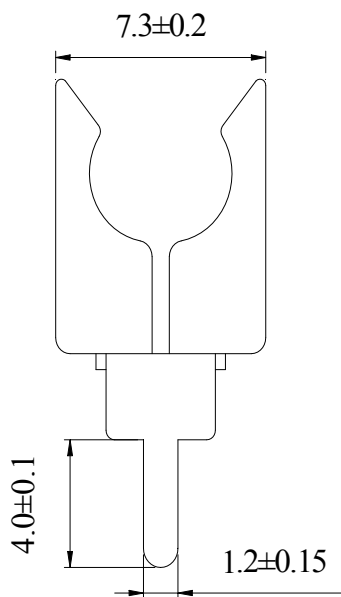
### Features

The BC510 fuse terminal is made of high purity phosphor copper with nickel plated surface. This clip shape is suited for use with the  $5 \times 20$  fuse links and specifications refer to model BC510-150A.

- Material: high purity phosphor copper, semihard
- Thickness: 0.5mm
- Pb- and Halogen-free, RoHS compliant
- Smooth Surface
- Soldering temperature:  $260 \pm 5^\circ\text{C}$
- Matte Tin plated



Dimensions (unit in mm)



### Ordering Information

Series	Part No.	Packaging Code	Qty
BC510	BC510-150A		