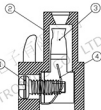
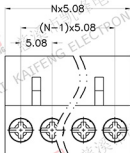
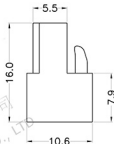


REV.	DESCRIPTION	DATE	DRAFTER	APPROVER
A1	DWG.REL	2020/5/18	ZHANG	JIN



• Material

- ①Screws : M2.5 steel, Zinc plated,  
"-/+ slot type
- ②Housing : PA66, UL94V-0
- ③Contact : Copper alloy, Tin plated
- ④Reed : Copper alloy, Ni plated  
or stainless steel

• Electrical

- Rated voltage : 300V
- Rated current : 10A
- Contact resistance : 20mΩ(Max)
- Insulation resistance : 500MΩ/DC500V
- Withstanding Voltage : AC2000V/1min
- Wire range : 24-12AWG 2.5mm<sup>2</sup>

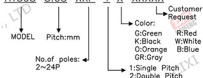
• Mechanical

- Operating temperature: -40℃~+105℃
- Soldering temperature: 250℃±5/5sec
- Torque : 0.4N.m (3.54Lb.in)
- Strip length: 7-8mm

• RoHS compliance

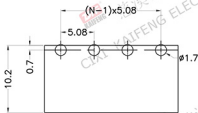
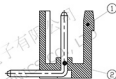
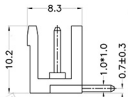
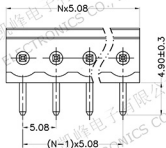
HOW TO ORDER

HT508-5.08-XXP-1 X-XXXX



Pitch range		Nominal dimension range				PROJECTION	TITLE
>0	>6	>10	>0	>30	>60	>100	HT508-5.08-XXP-1X
6	10	24	30	60	100	150	
±0.15	±0.20	±0.30	±0.30	±0.50	±0.70	±1.00	±1.30
							±2
DRAWING TYPE		CUSTOMER DRAWING					
SCALE		1:1 SHEET 1 OF 1					
DRAWING NO.		W10000042					
UNIT	mm	SERIES HT508					
SHEET SIZE		A4					
PROJECTION		FIRST ANGLE					
TITLE		慈溪市凯峰电子有限公司 CIXI KAIFENG ELECTRONICS CO.,LTD					

REV.	DESCRIPTION	DATE	DRAFTER	APPROVER
A1	DWG.REL	2020/5/18	ZHANG	JIN

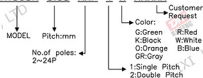


P.C.B.LAYOUT

- Material
  - ⊙Housing : PA66, UL94V-0
  - ⊙Pin header : Copper alloy, Tin plated
- Electrical
  - Rated voltage : 300V
  - Rated current : 10A
  - Contact resistance : 20mΩ(Max)
  - Insulation resistance : 500MΩ/DC500V
  - Withstanding Voltage : AC2000V/1min
- Mechanical
  - Operating temperature: -40°C ~ +105°C
  - Soldering temperature: 250°C ± 5/5sec
- RoHS compliance

#### HOW TO ORDER

HT508R-5.08-XXP-1 X-XXXXX



Pitch range	Nominal dimension range	PROJECTION	UNIT	TITLE
>0	>0	0.1/10	mm	HT508R-5.08-XXP-1X
6	60	<	A4	SHEET SIZE
±0.15(±0.20)	±0.30(±0.50)	±1.30	SERIES	HT508R
DRAWING TYPE		CUSTOMER DRAWING		
SCALE		1:1 SHEET 1 OF 1		
DRAWING NO.		W10000062		

**DF** 慈溪市凯峰电子有限公司  
CIXI KAIFENG ELECTRONICS CO., LTD

