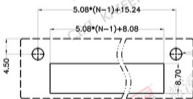
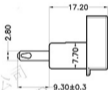
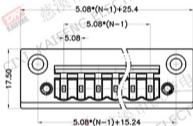
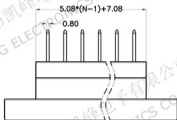


REV.	DESCRIPTION	DATE	DRAFTER	APPROVER
A1	DWG.REL	2020.5.20	ZHANG	JIN



- Material  
 ◊Housing : PA66, UL94V-0  
 ◊Pin header : Copper alloy, Tin plated  
 ◊Nut : M2.5,Copper alloy
- Electrical  
 UL IEC  
 Rated voltage : 300V 320V  
 Rated current : 15A 20A  
 Contact resistance : 20mΩ(Max)  
 Insulation resistance : 500MΩ/DC500V  
 Withstanding Voltage : AC2000V/1min
- Mechanical  
 Operating temperature: -40℃~+105℃  
 Soldering temperature: 250℃±5/5sec
- RoHS compliance

#### HOW TO ORDER

KF1024B-5.08-XXP-1 X-XXXX



Pitch range	Nominal dimension range	PROJECTION	TITLE
>0	>0	6.1/10	KF1024B-5.08-XXP-1X
>6	>60	<	SHEET SIZE A4
>10	>100		SERIES KF1024B
>24	>150		
±0.15	±0.30		
±0.20	±0.30		
±0.30	±0.50		
±0.70	±1.00		
±1.30	±2.0		
±2.0			
DRAWING TYPE CUSTOMER DRAWING		慈溪市凯峰电子有限公司 CIXI KAIFENG ELECTRONICS CO.,LTD	
SCALE 1:1			
SHEET 1 OF 1			
DRAWING NO. W10001662			