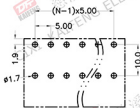
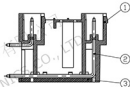
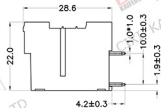
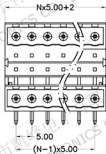


REV.	DESCRIPTION	DATE	DRAFTER	APPROVER
A1	DWG.REL	2020.5.20	ZHANG	JIN

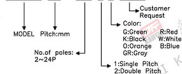


P.C.B.LAYOUT

- Material
 - ⊙Housing: PA66, UL94V-0
 - ⊙Pin header: Copper alloy, Tin plated
 - ⊙Cover: PA66, UL94V-0
- Electrical
 - UL IEC
 - Rated voltage: 300V 320V
 - Rated current: 15A 20A
 - Contact resistance: 20mΩ(Max)
 - Insulation resistance: 500MΩ/DC500V
 - Withstanding Voltage: AC2000V/1min
- Mechanical
 - Operating temperature: -40℃ ~ +105℃
 - Soldering temperature: 250℃ ± 5/5sec
- RoHS compliance

HOW TO ORDER

KF1026R-5.0-2*XXP-1 X-XXXXX



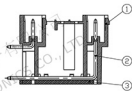
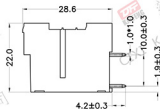
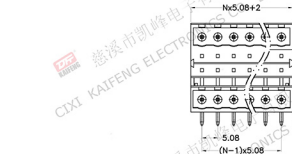
Pitch range	Nominal dimension range	PROJECTION	UNIT	TITLE
~x0 ~x6 ~x10	~x0 ~x30 ~x60 ~x100	~ ~ ~ ~	mm	KF1026R-5.0-2*XXP-1X
6.10 8.10 10.10	24 30 60 100 150	< < < <	SHEET SIZE	SERIES KF1026R
±0.15 ±0.20 ±0.30	±0.30 ±0.50 ±0.70 ±1.00 ±1.30	±2°		

DRAWING TYPE	CUSTOMER DRAWING
SCALE	1:1 SHEET 1 OF 1
DRAWING NO.	W10001822



慈溪市凯峰电子有限公司
CIXI KAIFENG ELECTRONICS CO.,LTD

REV.	DESCRIPTION	DATE	DRAFTER	APPROVER
A1	DWG.REL	2020.5.20	ZHANG	JIN

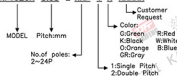


P.C.B.LAYOUT

- Material
 - ① Housing : PA66, UL94V-0
 - ② Pin header : Copper alloy, Tin plated
 - ③ Cover : PA66, UL94V-0
- Electrical
 - UL IEC
 - Rated voltage : 300V 320V
 - Rated current : 15A 20A
 - Contact resistance : 20mΩ(Max)
 - Insulation resistance : 500MΩ/DC500V
 - Withstanding Voltage : AC2000V/1min
- Mechanical
 - Operating temperature: -40℃ ~ +105℃
 - Soldering temperature: 250℃ ± 5/sec
- RoHS compliance

HOW TO ORDER

KF1026R-5.08-2*XXP-1 X-XXXXX

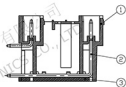
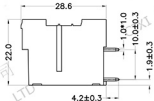
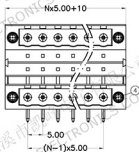


Pitch range	Nominal dimension range	PROJECTION	UNIT	TITLE				
>0	>6	>10	>30	>60	>100	0.1/10	mm	KF1026R-5.08-2*XXP-1X
6	10	24	30	60	100	150	≤	SHEET SIZE A4
±0.15 (±0.20)		±0.30	±0.50	±0.70	±1.00	±1.30	±2	SERIES KF1026R
DRAWING TYPE		CUSTOMER DRAWING						
SCALE		1:1 SHEET 1 OF 1						
DRAWING NO.		W10001782						



慈溪市凯峰电子有限公司
CIXI KAIFENG ELECTRONICS CO., LTD

REV.	DESCRIPTION	DATE	DRAFTER	APPROVER
A1	DWG.REL	2020.5.20	ZHANG	JIN



P.C.B.LAYOUT

- Material
 - ①Housing : PA66, UL94V-0
 - ②Pin header : Copper alloy, Tin plated
 - ③Cover : PA66, UL94V-0
 - ④Nut : M2.5,Copper alloy

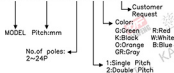
- Electrical
 - UL IEC
 - Rated voltage : 300V 320V
 - Rated current : 15A 20A
 - Contact resistance : 20mΩ(Max)
 - Insulation resistance : 500MΩ/DC500V
 - Withstanding Voltage : AC2000V/1min

- Mechanical
 - Operating temperature: -40℃~+105℃
 - Soldering temperature: 250℃±5/5sec

- RoHS compliance

HOW TO ORDER

KF1026RM-5.0-2*XXP-1 X-XXXXX



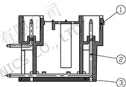
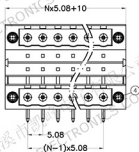
Pitch range	Nominal dimension range	PROJECTION	UNIT	TITLE						
>0	>6	>10	>0	>30	>60	>100	>150	6.1/10	mm	KF1026RM-5.0-2*XXP-1X
6	10	24	30	60	100	150	≥150	≤	A4	SHEET SIZE
±0.15	±0.20	±0.30	±0.30	±0.50	±0.70	±1.00	±1.30	±2		SERIES
										KF1026RM

DRAWING TYPE	CUSTOMER DRAWING
SCALE	1:1
SHEET	1 OF 1
DRAWING NO.	W10001832



慈溪市凯峰电子有限公司
CIXI KAIFENG ELECTRONICS CO.,LTD

REV.	DESCRIPTION	DATE	DRAFTER	APPROVER
A1	DWG.REL	2020.5.20	ZHANG	JIN



P.C.B.LAYOUT

- Material
 - ①Housing : PA66, UL94V-0
 - ②Pin header : Copper alloy, Tin plated
 - ③Cover : PA66, UL94V-0
 - ④Nut : M2.5,Copper alloy

- Electrical
 - UL IEC
 - Rated voltage : 300V 320V
 - Rated current : 15A 20A
 - Contact resistance : 20mΩ(Max)
 - Insulation resistance: 500MΩ/DC500V
 - Withstanding Voltage : AC2000V/1min

- Mechanical
 - Operating temperature:-40℃~+105℃
 - Soldering temperature:250℃±5/5sec

- RoHS compliance

HOW TO ORDER

KF1026RM-5.08-2*XXP-1 X-XXXXX

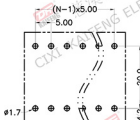
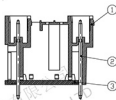
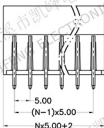
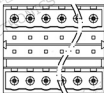
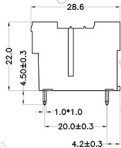


Pitch range	Nominal dimension range	PROJECTION	UNIT	TITLE						
>0	>6	>10	>0	>30	>60	>100	>150	6.1/10	mm	KF1026RM-5.08-2*XXP-1X
6	10	24	30	60	100	150	≥150	≤	A4	SHEET SIZE
CUSTOMER DRAWING										
SCALE 1:1 SHEET 1 OF 1										
DRAWING NO. W10001792										



慈溪市凯峰电子有限公司
CIXI KAIFENG ELECTRONICS CO.,LTD

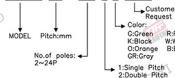
REV.	DESCRIPTION	DATE	DRAWER	APPROVER
A1	DWG.REL	2020.5.20	ZHANG	JIN



- Material
 - ①Housing : PA66, UL94V-0
 - ②Pin header : Copper alloy, Tin plated
 - ③Cover : PA66, UL94V-0
- Electrical
 - UL IEC
 - Rated voltage : 300V 320V
 - Rated current : 15A 20A
 - Contact resistance : 20mΩ(Max)
 - Insulation resistance : 500MΩ/DC500V
 - Withstanding Voltage : AC2000V/1min
- Mechanical
 - Operating temperature : -40℃ ~ +105℃
 - Soldering temperature : 250℃ ± 5/5sec
- RoHS compliance

HOW TO ORDER

KF1026V-5.0-2*XXP-1 X-XXXX



P.C.B.LAYOUT

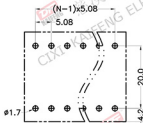
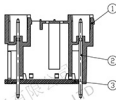
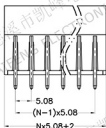
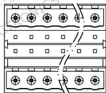
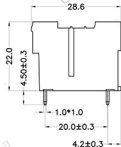
Pitch range				Nominal dimension range				PROJECTION
>0	>6	>10	>0	>30	>60	>100	0.1/10	
~	~	~	~	~	~	~	~	
6	10	24	30	60	100	150	<	
±0.15	±0.20	±0.30	±0.30	±0.50	±0.70	±1.00	±2'	

UNIT	TITLE
mm	KF1026V-5.0-2*XXP-1X
SHEET SIZE	SERIES
A4	KF1026V

DRAWING TYPE	CUSTOMER DRAWING
SCALE	1:1 SHEET 1 OF 1
DRAWING NO.	W10001802

DF 慈溪市凯峰电子有限公司
CIXI KAIFENG ELECTRONICS CO.,LTD

REV.	DESCRIPTION	DATE	DRAFTER	APPROVER
A1	DWG.REL	2020.5.20	ZHANG	JIN



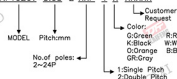
- Material
 - ØHousing : PA66, UL94V-0
 - ØPin header : Copper alloy, Tin plated
 - ØCover : PA66, UL94V-0

- Electrical
 - UL IEC
 - Rated voltage : 300V 320V
 - Rated current : 15A 20A
 - Contact resistance : 20mΩ(Max)
 - Insulation resistance : 500MΩ/DC500V
 - Withstanding Voltage : AC2000V/1min

- Mechanical
 - Operating temperature: -40℃~+105℃
 - Soldering temperature: 250℃±5/5sec

- RoHS compliance

HOW TO ORDER
 KF1026V-5.08-2*XXP-1 X-XXXX



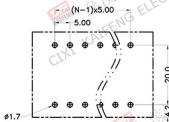
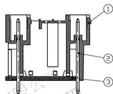
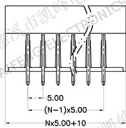
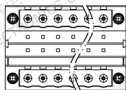
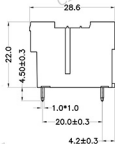
P.C.B.LAYOUT

Pitch range	Nominal dimension range	PROJECTION	UNIT	TITLE
>0	>60	0.1/10	mm	KF1026V-5.08-2*XXP-1X
>6	>30	<	SHEET SIZE	A4
>10	>24		SERIES	KF1026V
±0.15/±0.20/±0.30	±0.30/±0.50/±0.70/±1.00/±1.30	±2	DRAWING TYPE CUSTOMER DRAWING	
SCALE		1:1	DRAWING NO. W10001762	
		1 SHEET	1 OF 1	



慈溪市凯峰电子有限公司
 CIXI KAIFENG ELECTRONICS CO.,LTD

REV.	DESCRIPTION	DATE	DRAFTER	APPROVER
A1	DWG.REL	2020.5.20	ZHANG	JIN



P.C.B.LAYOUT

- Material
 - ①Housing : PA66, UL94V-0
 - ②Pin header : Copper alloy, Tin plated
 - ③Cover : PA66, UL94V-0
 - ④Nut : M2.5,Copper alloy

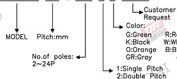
- Electrical
 - UL IEC
 - Rated voltage : 300V 320V
 - Rated current : 15A 20A
 - Contact resistance : 20mΩ(Max)
 - Insulation resistance : 500MΩ/DC500V
 - Withstanding Voltage : AC2000V/1min

- Mechanical
 - Operating temperature: -40℃~+105℃
 - Soldering temperature: 250℃±5/5sec

- RoHS compliance

HOW TO ORDER

KF1026VM-5.0-2*XXP-1 X-XXXX



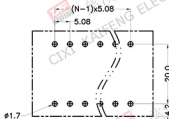
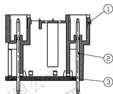
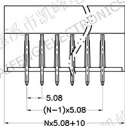
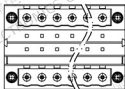
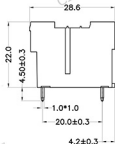
Pitch range	Nominal dimension range	PROJECTION	TITLE
>0	>0	6.1/10	KF1026VM-5.0-2*XXP-1X
>6	>30	<	SHEET SIZE A4
>10	>60		SERIES KF1026VM
>24	>100		
>30	>150		
>60	>300		
>100	>1500		
±0.15	±0.30		
±0.20	±0.50		
±0.30	±0.70		
±0.50	±1.00		
±0.70	±1.30		
±1.00	±1.50		
±1.30	±2.00		

DRAWING TYPE	CUSTOMER DRAWING
SCALE	1:1 SHEET 1 OF 1
DRAWING NO.	W10001812



慈溪市凯峰电子有限公司
CIXI KAIFENG ELECTRONICS CO.,LTD

REV.	DESCRIPTION	DATE	DRAFTER	APPROVER
A1	DWG.REL	2020.5.20	ZHANG	JIN



P.C.B.LAYOUT

- Material
 - ①Housing : PA66, UL94V-0
 - ②Pin header : Copper alloy, Tin plated
 - ③Cover : PA66, UL94V-0
 - ④Nut : M2.5,Copper alloy

- Electrical
 - UL IEC
 - Rated voltage : 300V 320V
 - Rated current : 15A 20A
 - Contact resistance : 20mΩ(Max)
 - Insulation resistance : 500MΩ/DC500V
 - Withstanding Voltage : AC2000V/1min

- Mechanical
 - Operating temperature: -40℃~+105℃
 - Soldering temperature: 250℃±5/5sec

- RoHS compliance

HOW TO ORDER

KF1026VM-5.08-2*XXP-1 X-XXXX



Pitch range	Nominal dimension range	PROJECTION	UNIT	TITLE
>0	>0	6.1/10	mm	KF1026VM-5.08-2*XXP-1X
>6	>30	<	SHEET SIZE	A4
>10	>60			SERIES
>24	>100			
>30	>150			
>30	>150			
±0.15	±0.30	±2		
±0.20	±0.30			
±0.30	±0.50			
±0.70	±1.00			
±1.30	±2			
DRAWING TYPE		CUSTOMER DRAWING		
SCALE		1:1 SHEET 1 OF 1		
DRAWING NO.		W10001772		



慈溪市凯峰电子有限公司
CIXI KAIFENG ELECTRONICS CO.,LTD