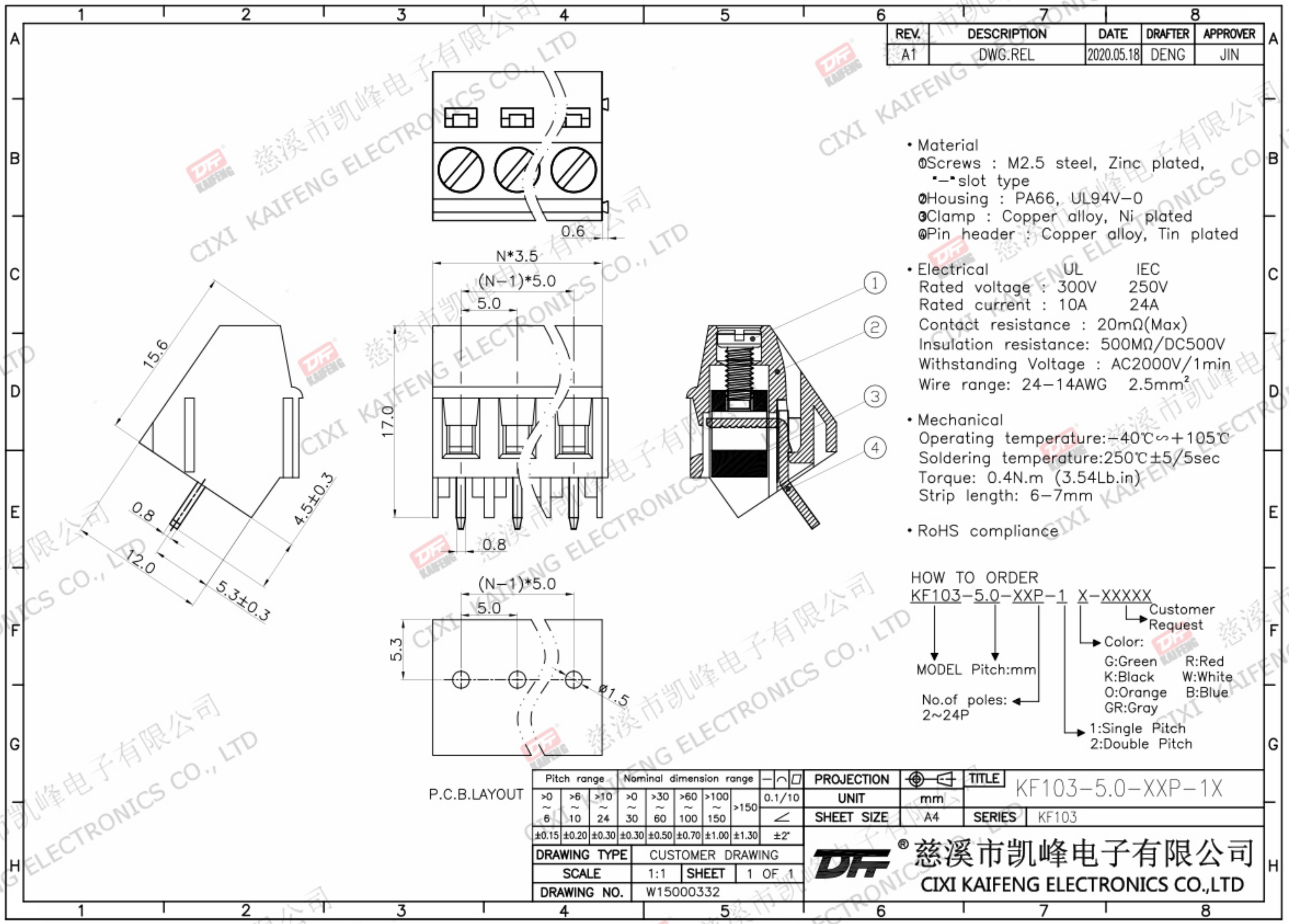


REV.	DESCRIPTION	DATE	DRAFTER	APPROVER
A1	DWG.REL	2020.05.18	DENG	JIN



- Material
  - ØScrews : M2.5 steel, Zinc plated, - slot type
  - ØHousing : PA66, UL94V-0
  - ØClamp : Copper alloy, Ni plated
  - ØPin header : Copper alloy, Tin plated
- Electrical
 

	UL	IEC
Rated voltage :	300V	250V
Rated current :	10A	24A
Contact resistance :	20mΩ(Max)	
Insulation resistance:	500MΩ/DC500V	
Withstanding Voltage :	AC2000V/1min	
Wire range:	24-14AWG 2.5mm <sup>2</sup>	
- Mechanical
  - Operating temperature: -40°C ~ +105°C
  - Soldering temperature: 250°C ± 5 / 5sec
  - Torque: 0.4N.m (3.54Lb.in)
  - Strip length: 6-7mm
- RoHS compliance

HOW TO ORDER  
 KF103-5.0-XXP-1 X-XXXXX

MODEL Pitch:mm  
 No.of poles: 2~24P  
 X-XXXXX  
 Customer Request  
 Color:  
 G:Green R:Red  
 K:Black W:White  
 O:Orange B:Blue  
 GR:Gray  
 1:Single Pitch  
 2:Double Pitch

Pitch range	Nominal dimension range							PROJECTION	TITLE
>0	>6	>10	>0	>30	>60	>100	>150	UNIT	KF103-5.0-XXP-1X
~6	~10	~24	~30	~60	~100	~150	>150	SHEET SIZE	A4
±0.15	±0.20	±0.30	±0.30	±0.50	±0.70	±1.00	±1.30	SERIES	KF103
DRAWING TYPE		CUSTOMER DRAWING							
SCALE		1:1		SHEET		1 OF 1			
DRAWING NO.		W15000332							

**DF** 慈溪市凯峰电子有限公司  
 CIXI KAIFENG ELECTRONICS CO.,LTD