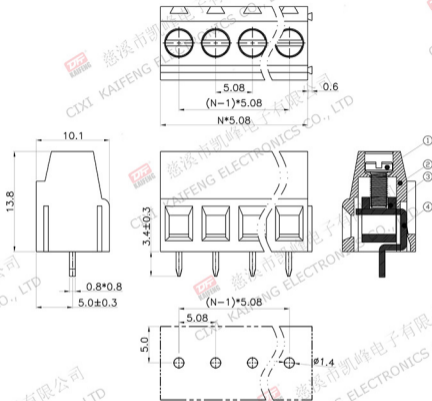


REV.	DESCRIPTION	DATE	DRAFTER	APPROVER
A1	DWG.REL	2020.05.19	DENG	JIN



• Material  
 ØScrews : M3.0 steel, Zinc plated,  
 -" slot type  
 ØHousing : PA66, UL94V-0  
 ØClamp : Copper alloy, Ni plated  
 ØPin header : Copper alloy, Tin plated

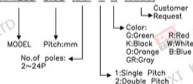
• Electrical UL IEC  
 Rated voltage : 300V 250V  
 Rated current : 15A 18A  
 Contact Resistance: 20mΩ  
 Insulation resistance: 500MΩ/DC500V  
 Withstanding Voltage : AC2000V/1min  
 Wire range : 24-14AWG 2.5mm<sup>2</sup>

• Mechanical  
 Operating temperature: -40℃ ~ +105℃  
 Soldering temperature: 250℃ ± 5 / 5sec  
 Torque : 0.5N.m (4.43Lb.in)  
 Strip length : 6-7mm

• RoHS compliance

#### HOW TO ORDER

KF128D-5.08-XXP-1 X-XXXXX



P.C.B.LAYOUT

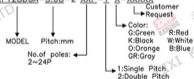
Pitch range	Nominal dimension range	PROJECTION	UNIT	TITLE
>0 >6 >10	>0 >30 >60 >100	0.1/10	mm	KF128D-5.08-XXP-1X
5 10 24	30 60 100 150		SHEET SIZE	A4
±0.15 ±0.20 ±0.30	±0.30 ±0.50 ±0.70 ±1.00 ±1.30		SERIES	KF128
DRAWING TYPE	CUSTOMER DRAWING	慈溪市凯峰电子有限公司 CIXI KAIFENG ELECTRONICS CO.,LTD		
SCALE	1:1 SHEET 1 OF 1			
DRAWING NO.	W15000482			

REV.	DESCRIPTION	DATE	DRAFTER	APPROVER
A1	DWG.REL	2020.05.19	DENG	JIN

- Material
  - ①Screws : M3.0 steel, Zinc plated, "-" slot type
  - ②Housing : PA66, UL94V-0
  - ③Clamp : Copper alloy, Ni plated
  - ④Pin header : Copper-alloy, Tin plated
- Electrical
  - UL IEC
  - Rated voltage : 300V 250V
  - Rated current : 15A 18A
  - Contact Resistance: 20mΩ
  - Insulation resistance: 500MΩ/DC500V
  - Withstanding Voltage : AC2000V/1min
  - Wire range : 24-14AWG 2.5mm<sup>2</sup>
- Mechanical
  - Operating temperature: -40°C ~ +105°C
  - Soldering temperature: 250°C ±5/5sec
  - Torque : 0.5N.m (4.43l.b.in)
  - Strip length: 6-7mm
- RoHS compliance

#### HOW TO ORDER

KF128DGA-5.08-2\*XXP-1 X-XXXXX



#### P.C.B LAYOUT

Pitch range		Nominal dimension range		PROJECTION	TITLE
>0	>6	>0	>30	6.1/10	KF128DGA-5.08-2*XXP-1X
6	10	30	60	<	SHEET SIZE A4
10	24	30	100		SERIES KF128DGA
15	30	30	150		
20	40	30	200		
25	50	30	250		
30	60	30	300		
35	70	30	350		
40	80	30	400		
45	90	30	450		
50	100	30	500		
55	110	30	550		
60	120	30	600		
65	130	30	650		
70	140	30	700		
75	150	30	750		
80	160	30	800		
85	170	30	850		
90	180	30	900		
95	190	30	950		
100	200	30	1000		
105	210	30	1050		
110	220	30	1100		
115	230	30	1150		
120	240	30	1200		
125	250	30	1250		
130	260	30	1300		
135	270	30	1350		
140	280	30	1400		
145	290	30	1450		
150	300	30	1500		
155	310	30	1550		
160	320	30	1600		
165	330	30	1650		
170	340	30	1700		
175	350	30	1750		
180	360	30	1800		
185	370	30	1850		
190	380	30	1900		
195	390	30	1950		
200	400	30	2000		
205	410	30	2050		
210	420	30	2100		
215	430	30	2150		
220	440	30	2200		
225	450	30	2250		
230	460	30	2300		
235	470	30	2350		
240	480	30	2400		
245	490	30	2450		
250	500	30	2500		
255	510	30	2550		
260	520	30	2600		
265	530	30	2650		
270	540	30	2700		
275	550	30	2750		
280	560	30	2800		
285	570	30	2850		
290	580	30	2900		
295	590	30	2950		
300	600	30	3000		
305	610	30	3050		
310	620	30	3100		
315	630	30	3150		
320	640	30	3200		
325	650	30	3250		
330	660	30	3300		
335	670	30	3350		
340	680	30	3400		
345	690	30	3450		
350	700	30	3500		
355	710	30	3550		
360	720	30	3600		
365	730	30	3650		
370	740	30	3700		
375	750	30	3750		
380	760	30	3800		
385	770	30	3850		
390	780	30	3900		
395	790	30	3950		
400	800	30	4000		
405	810	30	4050		
410	820	30	4100		
415	830	30	4150		
420	840	30	4200		
425	850	30	4250		
430	860	30	4300		
435	870	30	4350		
440	880	30	4400		
445	890	30	4450		
450	900	30	4500		
455	910	30	4550		
460	920	30	4600		
465	930	30	4650		
470	940	30	4700		
475	950	30	4750		
480	960	30	4800		
485	970	30	4850		
490	980	30	4900		
495	990	30	4950		
500	1000	30	5000		

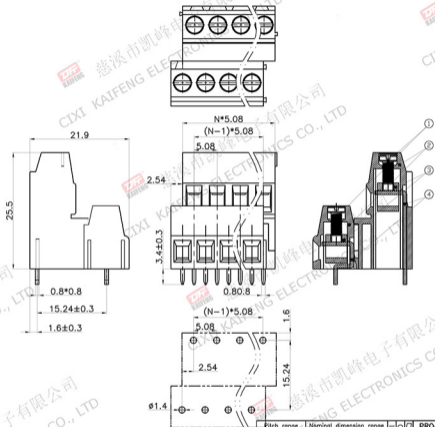
**DF**

慈溪市凯峰电子有限公司  
CIXI KAIFENG ELECTRONICS CO.,LTD

SCALE 1:1 SHEET 1 OF 1

DRAWING NO. W15000492

REV.	DESCRIPTION	DATE	DRAFTER	APPROVER
A1	DWG.REL	2020.05.15	DENG	JIN



- Material
  - ①Screws : M3.0 steel, Zinc plated, \*- slot type
  - ②Housing : PA66, UL94V-0
  - ③Clamp : Copper alloy, Ni plated
  - ④Pin header : Copper alloy, Tin plated

- Electrical
  - UL IEC
  - Rated voltage : 300V 250V
  - Rated current : 15A 18A
  - Contact Resistance: 20mΩ
  - Insulation resistance: 500MΩ/DC500V
  - Withstanding Voltage : AC2000V/1min
  - Wire range: 24-14AWG 2.5mm<sup>2</sup>

- Mechanical
  - Operating temperature: -40°C ~ +105°C
  - Soldering temperature: 250°C ±5/5sec
  - Torque: 0.5N.m (4.43Lb.in)
  - Strip length: 6-7mm

- RoHS compliance

#### HOW TO ORDER

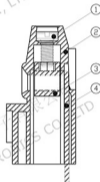
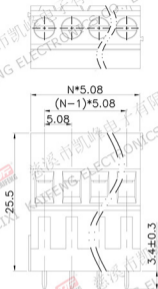
KF128DGB-5.08-2\*XP-1 X-XXXX



Pitch range	Nominal dimension range	PROJECTION	TITLE
>0	>0	UNIT	mm
>6	>30	SHEET SIZE	A4
>10	>60	SERIES	KF128DGB
>24	>100	KF128DGB-5.08-2*XP-1X	
>30	>150		
>60	>300		
>100	>1500		
>150	>1500		
>300	>1500		
>1500	>1500		
±0.15	±0.20		
±0.30	±0.50		
±0.70	±1.00		
±1.30	±2		
DRAWING TYPE		CUSTOMER DRAWING	
SCALE		1:1 SHEET 1 OF 1	
DRAWING NO.		W15000502	

**DF** 慈溪市凯峰电子有限公司  
CIXI KAIFENG ELECTRONICS CO., LTD

REV.	DESCRIPTION	DATE	DRAFTER	APPROVER
A1	DWG.REL	2020.05.15	DENG	JIN



P.C.B. LAYOUT

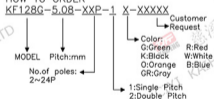
- Material
  - ⌀Screws : M3.0 steel, Zinc plated,
  - \*-\* slot type
  - ⌀Housing : PA66, UL94V-0
  - ⌀Clamp : Copper alloy, Ni plated
  - ⌀Pin header : Copper alloy, Tin plated

- Electrical
  - UL IEC
  - Rated voltage : 300V 250V
  - Rated current : 15A 24A
  - Contact Resistance: 20mΩ
  - Insulation resistance: 500MΩ/DC500V
  - Withstanding Voltage : AC2000V/1min
  - Wire range: 24-14AWG 2.5mm<sup>2</sup>

- Mechanical
  - Operating temperature: -40°C ~ +105°C
  - Soldering temperature: 250°C ± 5/5sec
  - Torque: 0.5N.m (4.43Lb.in)
  - Strip length: 6-7mm

- RoHS compliance

HOW TO ORDER

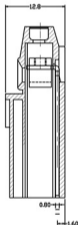
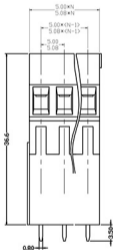
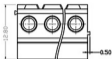


Pitch range		Nominal dimension range				PROJECTION	TITLE
>0	>6	>10	>0	>30	>60	>100	6.1/10
8	10	24	30	60	100	150	<
±0.15	±0.20	±0.30	±0.30	±0.50	±0.70	±1.00	±1.30
DRAWING TYPE		CUSTOMER DRAWING					
SCALE		1:1		SHEET		1 OF 1	
DRAWING NO.		W15000522					

UNIT	TITLE
mm	KF128G-5.08-XXP-1X
SHEET SIZE	SERIES
A4	KF128G

慈溪市凯峰电子有限公司  
 CIXI KAIFENG ELECTRONICS CO.,LTD

REV.	DESCRIPTION	DRAWN	CHECKED	APPROVED



**·MATERIAL**

**SCREWS : M2.5 STEEL ZINC PLATED**  
**CONTACT : BRASS**  
**PIN HEADER : BRASS, TIN PLATED**  
**HOUSING : PA66, UL94V-0**

**·ELECTRICAL**

**RATED VOLTAGE: 300V**  
**RATED CURRENT : 10A**  
**CONTACT RESISTANCE : 20mΩ**  
**INSULATION RESISTANCE : 5000MΩ/1000V**  
**WITHSTANDING VOLTAGE : AC2000V/1Min**  
**WIRE RANGE : 24-12AWG 2.5mm²**

**·MECHANICAL**

**TEMP.RANGE : -40℃~+105℃**  
**MAX SOLDERING : +250℃, FOR 5 SEC.**  
**ORQUE : 0.4Nm(3.6LB.IN)**  
**STRUO LEBOTG : 6-7mm**

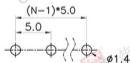
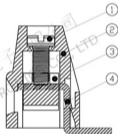
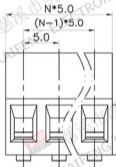
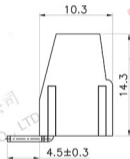
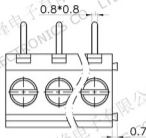
GENERAL TOLERANCE		ANGLE TOLERANCE	
X.	±0.20	X.	±2'
.X	±0.15	.X	±1'
.XX	±0.10	.XX	±0.5'

PROJECTION	①	TITLE	EURO TERMINAL BLOCKS
UNITS	mm		PITCH5.00,5.08MM
SHEET SIZE	A4	SERIES	KF128GG SERIES

DRAWING TYPE	COMPONENTS		
SCALE	1:1	SHEET	1 OF 1
DRAWING NO.			

**DF** 慈溪市凯峰电子有限公司  
 KAIFENG ELECTRONIC CO.,LTD

REV.	DESCRIPTION	DATE	DRAFTER	APPROVER
A1	DWG.REL	2020.05.19	DENG	JIN

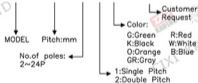


P.C.B.LAYOUT

- Material
  - ØScrews : M3.0 steel, Zinc plated.
  - \*-slot type
  - ØHousing : PA66, UL94V-0
  - ØClamp : Copper alloy, Ni plated
  - ØPin header : Copper alloy, Tin plated
- Electrical
  - UL IEC
  - Rated voltage : 300V 250V
  - Rated current : 10A 18A
  - Contact resistance : 20mΩ(Max)
  - Insulation resistance : 500MΩ/DC500V
  - Withstanding Voltage : AC2000V/1min
  - Wire range : 24-12AWG 2.5mm<sup>2</sup>
- Mechanical
  - Operating temperature:-40℃~+105℃
  - Soldering temperature:250℃±5/5sec
  - Torque: 0.5N.m (4.43lb.in)
  - Strip length: 6-7mm
- RoHS compliance

#### HOW TO ORDER

KF128R-5.0-XXP-1 X-XXXX



Pitch range	Nominal dimension range	PROJECTION
>0	>0	0.1/10
>6	>30	<
>10	>60	>150
>24	>100	>150
>30	>150	>150
±0.15(±0.20)	±0.30(±0.50)	±1.00(±1.30)
		±2

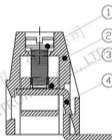
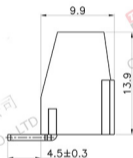
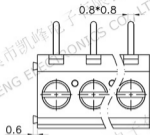
UNIT	TITLE
mm	KF128R-5.0-XXP-1X
SHEET SIZE	SERIES
A4	KF128

SCALE	CUSTOMER DRAWING
1:1	1 OF 1
DRAWING NO.	SHEET
W15000542	1 OF 1



慈溪市凯峰电子有限公司  
CIXI KAIFENG ELECTRONICS CO.,LTD

REV.	DESCRIPTION	DATE	DRAFTER	APPROVER
A1	DWG.REL	2020.05.21	DENG	JIN



- Material
  - ØScrews : M2.5 steel, Zinc plated, \*- slot type
  - ØHousing : PA66, UL94V-0
  - ØClamp : Copper alloy, Ni plated
  - ØPin header : Copper alloy, Tin plated

- Electrical
  - UL IEC
  - Rated voltage : 300V 250V
  - Rated current : 10A 18A
  - Contact Resistance: 20mΩ
  - Insulation resistance: 500MΩ/1000V
  - Withstanding Voltage : AC2000V/1min
  - Wire range : 24-12AWG 2.5mm<sup>2</sup>

- Mechanical
  - Operating temperature: -40°C ~ +105°C
  - Soldering temperature: 250°C ±5/5sec
  - Torque : 0.4N.m (3.54Lb.in)
  - Strip length: 6-7mm

- RoHS compliance

#### HOW TO ORDER

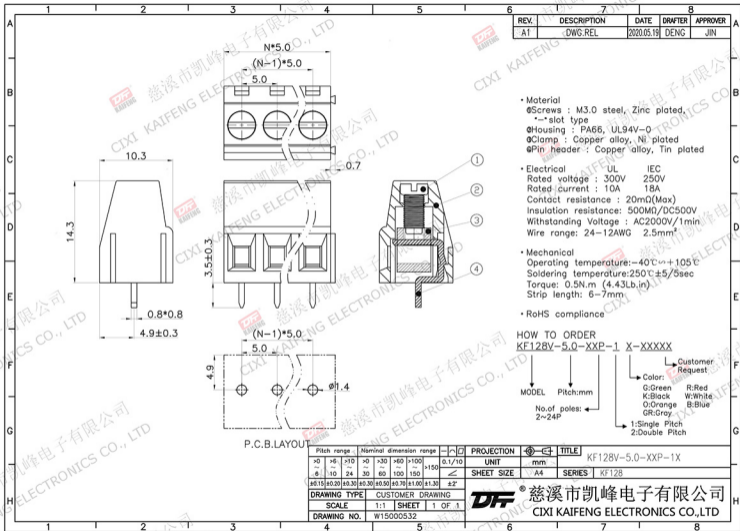
KF128R-5.08-XXP-1 X-XXXX



Pitch range		Nominal dimension range				PROJECTION	TITLE				
>0	>6	>10	>0	>30	>60	>100	6.1/10	UNIT	mm	KF128R-5.08-XXP-1X	
6	10	24	30	60	100	150	<	SHEET SIZE	A4	SERIES	KF128
±0.15/±0.20		±0.30	±0.30	±0.50	±0.70	±1.00	±1.30	DRAWING TYPE		CUSTOMER DRAWING	
SCALE		1:1	SHEET		1 OF 1		DRAWING NO.		W15000572		

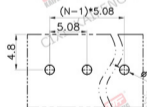
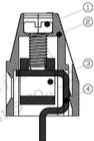
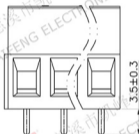
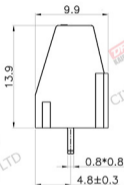
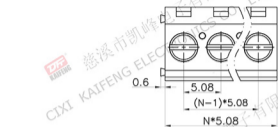


慈溪市凯峰电子有限公司  
CIXI KAIFENG ELECTRONICS CO., LTD





REV.	DESCRIPTION	DATE	DRAFTER	APPROVER
A1	DWG.REL	2020.05.15	DENG	JIN



P.C.B. LAYOUT

- Material
  - ØScrews : M2.5 steel, Zinc plated, \*- slot type
  - ØHousing : PA66, UL94V-0
  - ØClamp : Copper alloy, Ni plated
  - ØPin header : Copper alloy, Tin plated
- Electrical
  - UL IEC
  - Rated voltage : 300V 250V
  - Rated current : 10A 18A
  - Contact Resistance: 20mΩ
  - Insulation resistance: 500MΩ/1000V
  - Withstanding Voltage : AC2000V/1min
  - Wire range : 24-12AWG 2.5mm<sup>2</sup>
- Mechanical
  - Operating temperature: -40℃~+105℃
  - Soldering temperature: 250℃±5/5sec
  - Torque : 0.4N.m (3.54Lb.in)
  - Strip length: 6-7mm
- RoHS compliance

HOW TO ORDER  
KF128V-5.08-XXP-1 X-XXXX



Pitch range	Nominal dimension range	PROJECTION	UNIT	TITLE
>0	>0	6.1/10	mm	KF128V-5.08-XXP-1X
>6	>30	<	SHEET SIZE	A4
>10	>60	>150	SERIES	KF128
>24	>30	>100	CUSTOMER DRAWING	
>30	>60	>150	SCALE 1:1 SHEET 1 OF 1	
>30	>60	>150	DRAWING NO. W15000562	

**DF** 慈溪市凯峰电子有限公司  
CIXI KAIFENG ELECTRONICS CO.,LTD