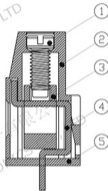
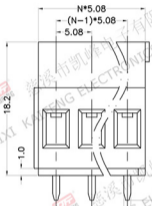
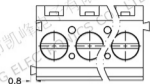
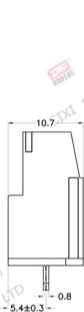


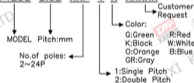
REV.	DESCRIPTION	DATE	DRAFTER	APPROVER
A1	DWG.REL	2020.05.22	DENG	JIN



- Material
 - ØScrews : M3.0 steel, Zinc plated,
 - *-* slot type
 - ØHousing : PA66, UL94V-0
 - ØClamp : Copper alloy, Ni plated
 - ØPin header : Copper alloy, Tin plated
- Electrical
 - UL IEC
 - Rated voltage : 300V 250V
 - Rated current : 20A 20A
 - Contact Resistance: 20mΩ
 - Insulation resistance: 500MΩ/DC500V
 - Withstanding Voltage : AC2000V/1min
 - Wire range: 24-12AWG 4.0mm²
- Mechanical
 - Operating temperature: -40℃ ~ +105℃
 - Soldering temperature: 250℃ ± 5 / 5sec
 - Torque: 0.8N.m (7.02Lb.in)
 - Strip length: 6-7mm
- RoHS compliance

HOW TO ORDER

KF129C-5.08-XXP-1 X-XXXX



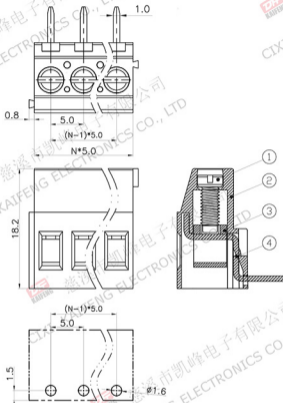
P.C.B. LAYOUT

Pitch range	Nominal dimension range	PROJECTION	UNIT	TITLE
>0	>0	6.1/10	mm	KF129C-5.08-XXP-1X
6	60	<	SHEET SIZE	A4
15	150		SERIES	KF129
DRAWING TYPE		CUSTOMER DRAWING		
SCALE		1:1 SHEET 1 OF 1		
DRAWING NO.		W15000712		



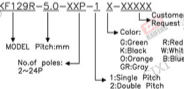
慈溪市凯峰电子有限公司
CIXI KAIFENG ELECTRONICS CO.,LTD

REV.	DESCRIPTION	DATE	DRAFTER	APPROVER
A1	DWG.REL	2020.05.21	DENG	JIN



- Material
 - ØScrews : M3.0 steel, Zinc plated, *- slot type
 - ØHousing : PA66, UL94V-0
 - ØClamp : Copper alloy, Ni plated
 - ØPin header : Copper alloy, Tin plated
- Electrical
 - UL IEC
 - Rated voltage : 300V 250V
 - Rated current : 20A 20A
 - Contact Resistance: 20mΩ
 - Insulation resistance: 500MΩ/DC500V
 - Withstanding Voltage : AC2000V/1min
 - Wire range: 24-12AWG 4.0mm²
- Mechanical
 - Operating temperature: -40℃ ~ +105℃
 - Soldering temperature: 250℃ ±5/5sec
 - Torque: 0.8N.m (7.02Lb.in)
 - Strip length: 6-7mm
- RoHS compliance

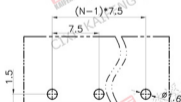
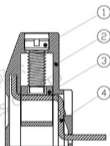
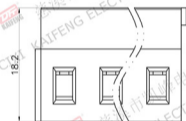
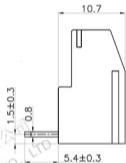
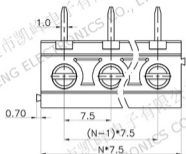
HOW TO ORDER
KF129R-5.0-XXP-1 X-XXXX



P.C.B.LAYOUT

Pitch range	Nominal dimension range	PROJECTION	UNIT	TITLE							
>0	>6	>10	>60	>100	6.1/10	mm	KF129R-5.0-XXP-1X				
6	10	24	30	60	100	150	150	SHEET SIZE	A4	SERIES	KF129
±0.15	±0.20	±0.30	±0.30	±0.50	±0.70	±1.00	±1.30	±2	DRAWING TYPE CUSTOMER DRAWING		
SCALE		1:1		SHEET		1 OF 1		慈溪市凯峰电子有限公司 CIXI KAIFENG ELECTRONICS CO.,LTD			
DRAWING NO.		W15000632									

REV.	DESCRIPTION	DATE	DRAFTER	APPROVER
A1	DWG.REL	2020.05.22	DENG	JIN



P.C.B.LAYOUT

- Material
 - ØScrews : M3.0 steel, Zinc plated, - slot type
 - ØHousing : PA66, UL94V-0
 - ØClamp : Copper alloy, Ni plated
 - ØPin header : Copper alloy, Tin plated

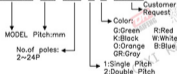
- Electrical
 - UL IEC
 - Rated voltage : 300V 450V
 - Rated current : 20A 20A
 - Contact Resistance: 20mΩ
 - Insulation resistance: 500MΩ/DC500V
 - Withstanding Voltage : AC2500V/1min
 - Wire range: 24-12AWG 4.0mm²

- Mechanical
 - Operating temperature: -40℃~+105℃
 - Soldering temperature: 250℃±5/5sec
 - Torque: 0.8N.m (7.02Lb.in)
 - Strip length: 6-7mm

- RoHS compliance

HOW TO ORDER

KF129R-7.5-XXP-1 X-XXXXX

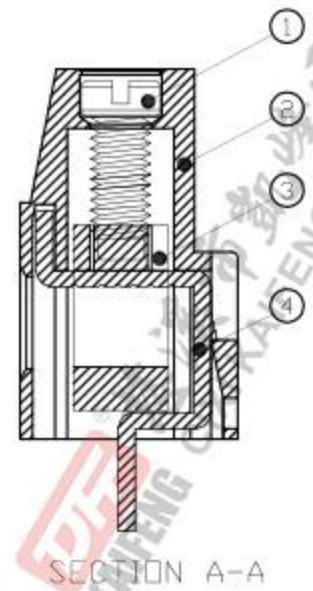
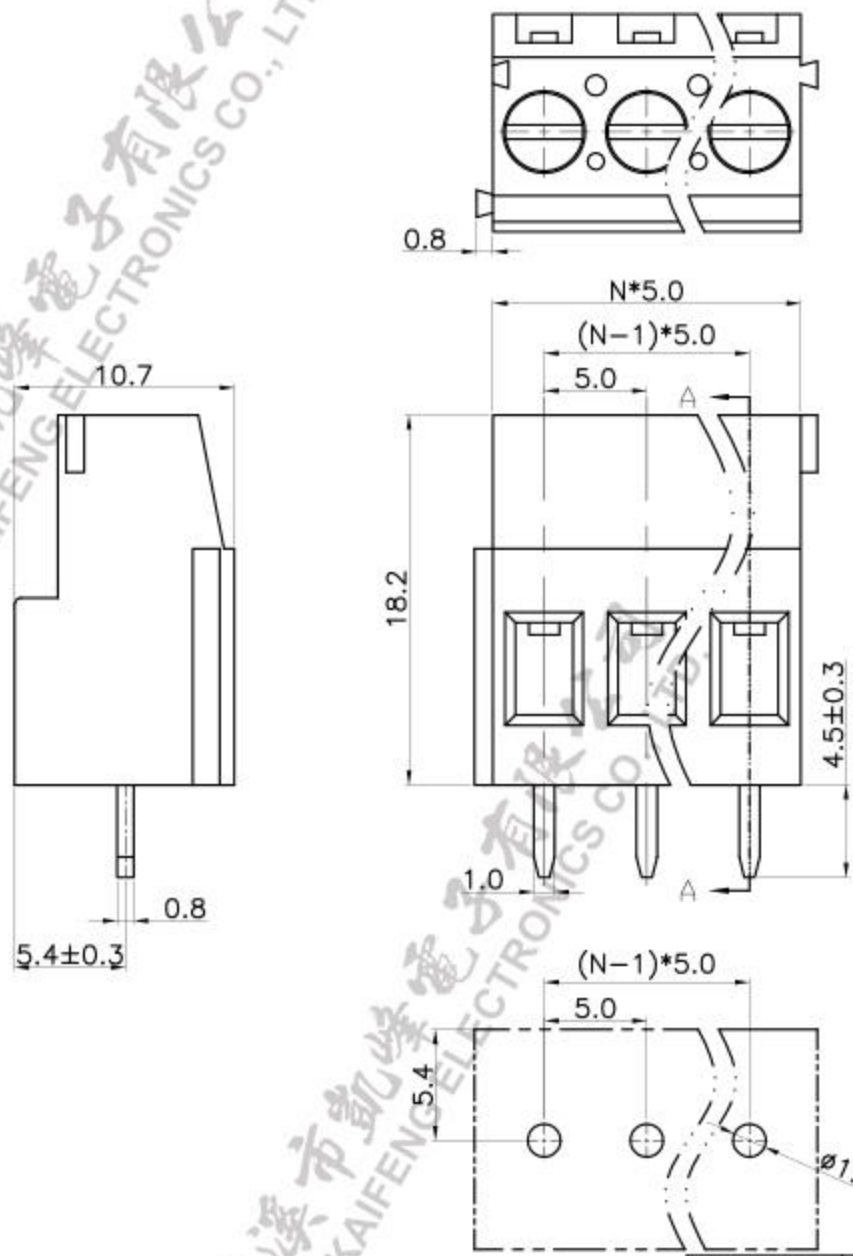


Pitch range	Nominal dimension range	PROJECTION	UNIT	TITLE						
>0	>6	>10	>0	>30	>60	>100	>150	6.1/10	mm	KF129R-7.5-XXP-1X
0.8	10	24	30	60	100	150	≥	SHEET SIZE	A4	SERIES KF129
±0.15	±0.20	±0.30	±0.40	±0.50	±0.60	±0.70	±1.00	±1.30	±2	
DRAWING TYPE		CUSTOMER DRAWING								
SCALE		1:1 SHEET 1 OF 1								
DRAWING NO.		W15000672								



慈溪市凯峰电子有限公司
CIXI KAIFENG ELECTRONICS CO.,LTD

REV.	DESCRIPTION	DATE	DRAFTER	APPROVER
V1.0	DWG.REL	2023.9.13	ZHANG	JIN



- Material
 - ①Screw : M3.0 steel, Zinc plated, - slot type
 - ②Housing : PA66, UL94V-0
 - ③Clamp : Copper alloy, Ni plated
 - ④Pin header : Copper alloy, Tin plated
- Electrical

	UL	IEC
Rated voltage :	300V	250V
Rated current :	20A	20A
Contact Resistance:	20mΩ	
Insulation resistance:	500MΩ/DC500V	
Withstanding Voltage :	AC2000V/1min	
Wire range:	24-12AWG	0.2-4.0mm ²
- Mechanical
 - Operating temperature: -40℃ ~ +105℃
 - Soldering temperature: 250℃ ± 5/5sec
 - Torque: 0.5N.m (4.43Lb.in)
 - Strip length: 6-7mm

• Conform to REACH and RoHS

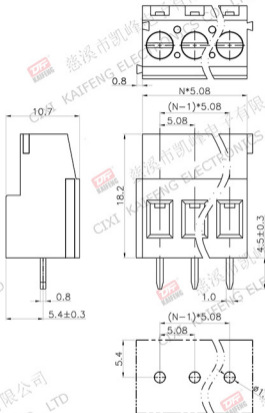
HOW TO ORDER
KF129V-5.0-XXP-1 X-XXXXX

MODEL Pitch:mm
 No. of poles: 2~24P
 X-XXXXX
 Customer Request
 Color:
 G:Green R:Red
 K:Black W:White
 O:Orange B:Blue
 GR:Gray
 1:Single Pitch
 2:Double Pitch

Pitch range	Nominal dimension range	PROJECTION	TITLE
>0 ~6	>0 ~30	0.1/10	KF129V-5.0-XXP-1X
>6 ~10	>30 ~60	∠	
>10 ~24	>60 ~100		SHEET SIZE A4
>24 ~30	>100 ~150		SERIES KF129
±0.15	±0.30		
±0.20	±0.50		
±0.30	±0.70		
±0.50	±1.00		
±1.00	±1.30		
±2'			
DRAWING TYPE	CUSTOMER DRAWING		
SCALE	1:1	SHEET	1 OF 1
DRAWING NO.	W15000622		

DF 慈溪市凯峰电子有限公司
 CIXI KAIFENG ELECTRONICS CO.,LTD

REV.	DESCRIPTION	DATE	DRAFTER	APPROVER
A1	DWG.REL	2020.05.22	DENG	JIN



- Material
 - ØScrews : M3.0 steel, Zinc plated,
 - *- slot type
 - ØHousing : PA66, UL94V-0
 - ØClamp : Copper alloy, Ni plated
 - ØPin header : Copper alloy, Tin plated

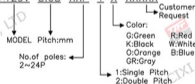
- Electrical
 - UL IEC
 - Rated voltage : 300V 250V
 - Rated current : 20A 20A
 - Contact Resistance: 20mΩ
 - Insulation resistance: 500MΩ/DC500V
 - Withstanding Voltage : AC2000V/1min
 - Wire range: 24-12AWG 4.0mm²

- Mechanical
 - Operating temperature: -40°C ~ +105°C
 - Soldering temperature: 250°C ± 5/5sec
 - Torque: 0.8N.m (7.02Lb.in)
 - Strip length: 6-7mm

- RoHS compliance

HOW TO ORDER

KF129V-5.08-XXP-1 X-XXXX



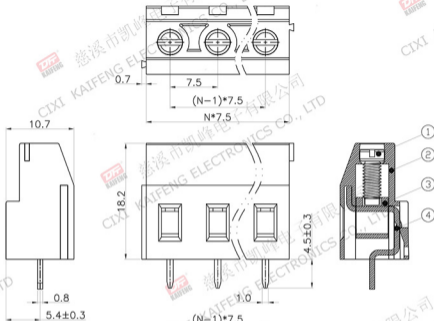
P.C.B.LAYOUT

Pitch range		Nominal dimension range				PROJECTION	UNIT	TITLE
>0	>6	>10	>0	>30	>60	>100	6.1/10	KF129V-5.08-XXP-1X
6	10	24	30	60	100	150	<	SHEET SIZE A4
±0.15	±0.20	±0.30	±0.30	±0.50	±0.70	±1.00	±2	SERIES KF129
DRAWING TYPE		CUSTOMER DRAWING						
SCALE		1:1 SHEET 1 OF 1						
DRAWING NO.		W15000642						

DF

慈溪市凯峰电子有限公司
CIXI KAIFENG ELECTRONICS CO.,LTD

REV.	DESCRIPTION	DATE	DRAFTER	APPROVER
A1	DWG.REL	2020.05.22	DENG	JIN



- Material
 - ØScrews : M3.0 steel, Zinc plated,
 - "-" slot type
 - ØHousing : PA66, UL94V-0
 - ØClamp : Copper alloy, Ni plated
 - ØPin header : Copper alloy, Tin plated

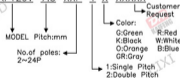
- Electrical
 - UL IEC
 - Rated voltage : 300V 450V
 - Rated current : 20A 20A
 - Contact Resistance: 20mΩ
 - Insulation resistance: 500MΩ/DC500V
 - Withstanding Voltage : AC2500V/1min
 - Wire range: 24-12AWG 4.0mm²

- Mechanical
 - Operating temperature: -40℃~+105℃
 - Soldering temperature: 250℃±5/5sec
 - Torque: 0.8N.m (7.02Lb.in)
 - Strip length: 6-7mm

- RoHS compliance

HOW TO ORDER

KF129V-7.5-XXP-1 X-XXXXX



P.C.B.LAYOUT

Pitch range	Nominal dimension range	PROJECTION	UNIT	TITLE
>0	>0	6.1/10	mm	KF129V-7.5-XXP-1X
6	60	<	SHEET SIZE	A4
±0.15	±0.30	±1.50	SERIES	KF129
DRAWING TYPE		CUSTOMER DRAWING		
SCALE		1:1 SHEET 1 OF 1		
DRAWING NO.		W15000662		

DF

慈溪市凯峰电子有限公司
CIXI KAIFENG ELECTRONICS CO.,LTD