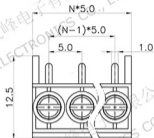


REV.	DESCRIPTION	DATE	DRAFTER	APPROVER
A1	DWG.REL	2020.05.17	DENG	JIN



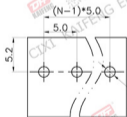
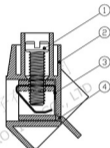
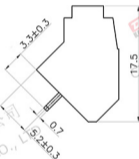
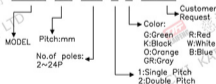
- Material
 - ØScrews : M2.5 steel, Zinc plated,
 - *- slot type
 - ØHousing : PA66, UL94V-0
 - ØReed : Copper alloy, Ni plated or stainless steel
 - ØPin header : Copper alloy, Tin plated

- Electrical
 - UL IEC
 - Rated voltage : 300V 250V
 - Rated current : 15A 22A
 - Contact resistance : 20mΩ(Max)
 - Insulation resistance : 500MΩ/DC500V
 - Withstanding Voltage : AC2000V/1min
 - Wire range : 22-14AWG 2.5mm²

- Mechanical
 - Operating temperature: -40°C ~ +105°C
 - Soldering temperature: 250°C ± 5/5sec
 - Torque : 0.4N.m³ (3.54Lb.in)
 - Strip length : 5-6mm

- RoHS compliance

HOW TO ORDER
KF168-5.0-XXP-1 X-XXXX



P.C.B.LAYOUT

Pitch range	Nominal dimension range	PROJECTION	TITLE
>0	>60	6.1/10	KF168-5.0-XXP-1X
6	60	<	SHEET SIZE A4
6	60	<	SERIES KF168
DRAWING TYPE CUSTOMER DRAWING		慈溪市凯峰电子有限公司 CIXI KAIFENG ELECTRONICS CO.,LTD	
SCALE 1:1 SHEET 1 OF 1			
DRAWING NO. W15000082			