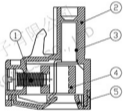
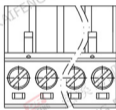
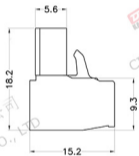
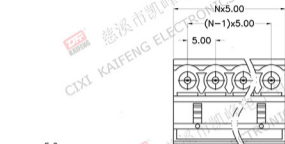


REV.	DESCRIPTION	DATE	DRAFTER	APPROVER
A1	DWG.REL	2020.6.02	ZHANG	JIN



- Material
 - ①Screw : M3.0 steel, Zinc plated, *- slot type
 - ②Housing : PA66, UL94V-0
 - ③Contact : Copper alloy, Tin plated
 - ④Clamp : Copper alloy, Ni plated
 - ⑤Cover : PA66, UL94V-0
- Electrical
 - UL IEC
 - Rated voltage : 300V 320V
 - Rated current : 15A 20A
 - Contact resistance : 20mΩ(Max)
 - Insulation resistance : 500MΩ/DC500V
 - Withstanding Voltage : AC2000V/1min
 - Wire range : 2B-12AWG 2.5mm²

- Mechanical
 - Operating temperature: -40°C ~ +105°C
 - Soldering temperature: 250°C ± 5/5sec
 - Torque : 0.5N.m (4.43Lb.in)
 - Strip length : 7-8mm

• RoHS compliance

HOW TO ORDER
KF222-5.0-XXP-1 X-XXXX

MODEL Pitch:mm
 No. of poles:
 2~24P

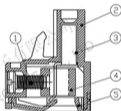
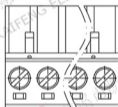
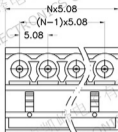
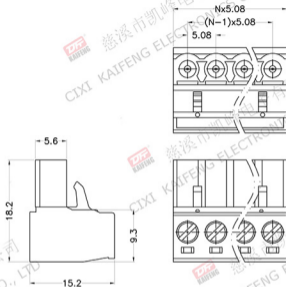
Customer Request
 Color:
 G:Green R:Red
 K:Black W:White
 O:Orange B:Blue
 GR:Gray

1:Single Pitch
 2:Double Pitch

Pitch range		Nominal dimension range				PROJECTION	TITLE
>0	>6	>10	>0	>30	>60	>100	6.1/10
6	10	24	30	60	100	150	<
±0.15 (±0.20)		±0.30	±0.30	±0.50	±0.70	±1.00	±1.30
							±2
DRAWING TYPE		CUSTOMER DRAWING					
SCALE		1:1 SHEET 1 OF 1					
DRAWING NO.		W10001592					
UNIT		mm					
SHEET SIZE		A4					
SERIES		KF222					
TITLE		KF222-5.0-XXP-1X					

DF 慈溪市凯峰电子有限公司
 CIXI KAIFENG ELECTRONICS CO., LTD

REV.	DESCRIPTION	DATE	DRAFTER	APPROVER
A1	DWG.REL	2020.6.02	ZHANG	JIN



- Material
 - ①Screw : M3.0 steel, Zinc plated, *- slot type
 - ②Housing : PA66, UL94V-0
 - ③Contact : Copper alloy, Tin plated
 - ④Clamp : Copper alloy, Ni plated
 - ⑤Cover : PA66, UL94V-0

- Electrical
 - UL IEC
 - Rated voltage : 300V 320V
 - Rated current : 15A 20A
 - Contact resistance : 20mΩ(Max)
 - Insulation resistance : 500MΩ/DC500V
 - Withstanding Voltage : AC2000V/1min
 - Wire range : 2B-12AWG 2.5mm²

- Mechanical
 - Operating temperature: -40°C ~ +105°C
 - Soldering temperature: 250°C ± 5/5sec
 - Torque : 0.5N.m (4.43Lb.in)
 - Strip length : 7-8mm

- RoHS compliance

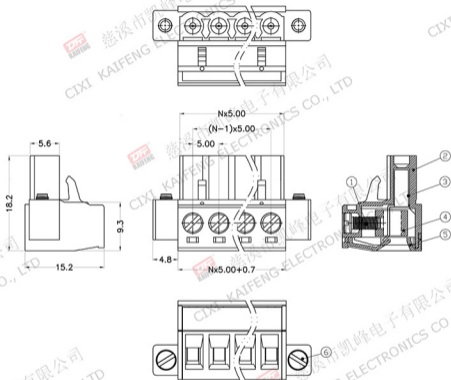
HOW TO ORDER

KF222-5.08-XXP-1 X-XXXXX



Pitch range	Nominal dimension range	PROJECTION	TITLE
>0	>0	0.1/10	KF222-5.08-XXP-1X
6	60	<	SHEET SIZE A4
±0.15	±0.30	±2	SERIES KF222
DRAWING TYPE CUSTOMER DRAWING		慈溪市凯峰电子有限公司 CIXI KAIFENG ELECTRONICS CO.,LTD	
SCALE	1:1 SHEET 1 OF 1		
DRAWING NO.	W10001572		

REV.	DESCRIPTION	DATE	DRAFTER	APPROVER
A1	DWG.REL	2020.6.02	ZHANG	JIN



- Material
 - ①Screw : M3.0 steel, Zinc plated, "—" slot type
 - ②Housing : PA66, UL94V-0
 - ③Contact : Copper alloy, Tin plated
 - ④Clamp : Copper alloy, Ni plated
 - ⑤Cover : PA66, UL94V-0
 - ⑥Screw : M2.5 steel, Zinc plated, "—" slot type

- Electrical
 - UL IEC
 - Rated voltage : 300V 320V
 - Rated current : 15A 20A
 - Contact resistance : 20mΩ(Max)
 - Insulation resistance : 500MΩ/DC500V
 - Withstanding Voltage : AC2000V/1min
 - Wire range : 28-12AWG 2.5mm²

- Mechanical
 - Operating temperature: -40℃ ~ +105℃
 - Soldering temperature: 250℃ ± 5/5sec
 - Torque : 0.5N.m (4.43Lb.in)
 - Strip length : 7-8mm

- RoHS compliance

HOW TO ORDER

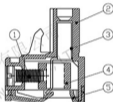
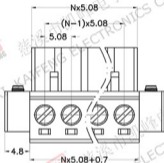
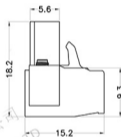
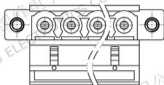
KF222M-5.0-XXP-1 X-XXXX



Pitch range	Nominal dimension range	PROJECTION	TITLE
>0	>0	6.1/10	KF222M-5.0-XXP-1X
>6	>30	<	SHEET SIZE A4
>10	>60		SERIES KF222M
>24	>100		
>30	>150		
>30	>150		
±0.15	±0.20		
±0.30	±0.50		
±0.70	±1.00		
±1.30	±2		
DRAWING TYPE		CUSTOMER DRAWING	
SCALE		1:1 SHEET 1 OF 1	
DRAWING NO.		W10001602	

DF 慈溪市凯峰电子有限公司
CIXI KAIFENG ELECTRONICS CO., LTD

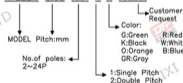
REV.	DESCRIPTION	DATE	DRAFTER	APPROVER
A1	DWG.REL	2020.6.02	ZHANG	JIN



- Material
 - ①Screw : M3.0 steel,Zinc plated,"-" slot type
 - ②Housing : PA66, UL94V-0
 - ③Contact : Copper alloy,Tin plated
 - ④Clamp : Copper alloy, Ni plated
 - ⑤Cover : PA66, UL94V-0
 - ⑥Screw : M2.5 steel,Zinc plated,"-" slot type
- Electrical
 - UL IEC
 - Rated voltage : 300V 320V
 - Rated current : 15A 20A
 - Contact resistance : 20mΩ(Max)
 - Insulation resistance : 500MΩ/DC500V
 - Withstanding Voltage : AC2000V/1min
 - Wire range : 28-12AWG 2.5mm²
- Mechanical
 - Operating temperature: -40℃ ~ +105℃
 - Soldering temperature: 250℃ ± 5/5sec
 - Torque : 0.5N.m (4.43Lb.in)
 - Strip length: 7-8mm
- RoHS compliance

HOW TO ORDER

KF222M-5.08-XXP-1 X-XXXX



Pitch range		Nominal dimension range				PROJECTION	TITLE
>0	>6	>10	>0	>30	>60	>100	6.1/10
6	10	24	30	60	100	150	<
±0.15	±0.20	±0.30	±0.30	±0.50	±0.70	±1.00	±1.30
							±2
DRAWING TYPE		CUSTOMER DRAWING					
SCALE		1:1 SHEET 1 OF 1					
DRAWING NO.		W10001582					
PROJECTION UNIT mm							TITLE KF222M-5.08-XXP-1X
SHEET SIZE A4							SERIES KF222M



慈溪市凯峰电子有限公司
CIXI KAIFENG ELECTRONICS CO.,LTD