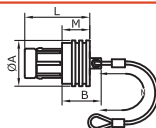
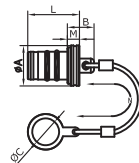


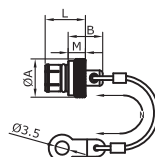
Reference		Dimensions(mm)			
Model	Series	A	B	L	N
TFG.0F01C.GSW-65	0F	9.8	4	12.5	65
TFG.1F01C.GSW-85	1F	12.0	4	15.5	85
TFG.AF01C.GSW-85	AF	12.5	4	14	85
TFG.AF01C.GSW-120	2F	15.6	4	15	120



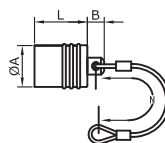
Reference		Dimensions(mm)				
Model	Series	A	B	L	M	N
ZFG.0F03C.GSW-60	0F	11	9.9	12.8	3	60
ZFG.1F03C.GSW-85	1F	14	12	19.9	6.4	85
ZFG.AF03C.GSW-100	AF	14.6	11.7	18.4	8.5	85
ZFG.2F03C.GSW-150	2F	16	11	19.2	7	85



Reference		Dimensions(mm)					
Model	Series	A	B	C	L	M	N
ZFG.0F01C.GSW.005-60	0F	11.5	6.5	9.1	12.8	3	60
ZFG.1F01C.GSW.009-85	1F	14	8.5	14.1	10.5	4.5	85
ZFG.AF01C.GSW.009-85	AF	14	5.8	14.1	13.7	2.3	85
ZFG.2F01C.GSW.014-120	2F	16	8.9	16.1	17.0	4.9	120

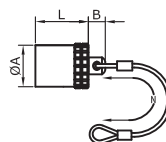


Reference		Dimensions(mm)				
Model	Series	A	B	L	M	N
ZFG.0B01C.GSW.007-85	0S-0B	10.0	9.0	10.5	4.5	85
ZFG.1B01C.GSW.007-85	1S-1B	14.0	9.5	12.5	5.0	85
ZFG.2B01C.GSW.007-85	2S-2B	18.0	12.0	14.0	6.0	85
ZFG.3B01C.GSW.007-120	3S-3B	22.0	14.0	18.0	8.0	120

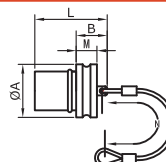


Reference		Dimensions(mm)			
Model	Series	A	B	L	N
TFG.0B01C.GSW-60	0B	10.6	4	10	60
TFG.1B01C.GSW-85	1B	12.0	4.5	12.2	85
TFG.2B01C.GSW-85	2B	15.0	5	13.8	85
TFG.2B01C.GSW-95	3B	18.5	5	18.5	95

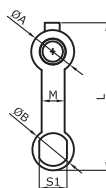
RM



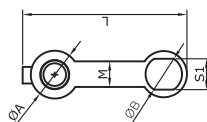
Reference		Dimensions(mm)			
Model	Series	A	B	L	N
TFG.0K01C.GSW-85	0K	14.0	6	12.5	85
TFG.1K01C.GSW-85	1K	16	5	15.5	85
TFG.2K01C.GSW-85	2K	19.5	5	17.5	85
TFG.3K01C.GSW-120	3K	23.0	6	22.0	120



Reference		Dimensions(mm)				
Model	Series	A	B	M	L	N
ZFG.0K01C.GSW-85	0K	15	7	4	15	85
ZFG.1K01C.GSW-85	1K	17	5.8	6	20	85
ZFG.2K01C.GSW-85	2K	20.5	5.8	8	24	85



Reference		Dimensions(mm)				
Model	Series	A	B	L	M	S1
ZFG.0F04	0F	11.9	11.8	40	6.3	8.0
ZFG.1F04	1F	14.1	14.0	60	7.2	12.5
ZFG.AF04	AF	14.1	14.0	60	7.2	12
ZFG.2F04	2F	16.1	16.0	60	8.0	14.5

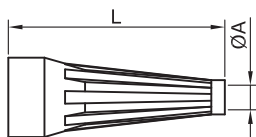


Reference		Dimensions(mm)				
Model	Series	A	B	L	M	S1
ZFG.0B04	0B	11.9	9.0	40	6.3	8.0
ZFG.1B04	1B	14.1	12.0	60	7.2	10.5
ZFG.2B04	2B	16.1	15.0	60	7.2	13.5

Main characteristics

Material: TPU (Thermoplastic Polyurethane)

Temperature range in dry atmosphere: -60°C+200°C



Shell Size	CableΦ		Dimensions (mm)		Part Number
	min	max	A	L	
00	2.8	3.1	2.8	22	RM-GMA-0B-028-DN
	3.0	3.4	2.5	24	RM-GMA-0B-025-DN
0B	2.5	3.0	3.0	24	RM-GMA-0B-030-DN
0S	3.0	3.5	3.5	24	RM-GMA-0B-035-DN
0K	3.5	4.0	4.0	24	RM-GMA-0B-040-DN
0F	4.0	4.5	4.5	24	RM-GMA-0B-045-DN
	4.5	5.5	5.5	27	RM-GMA-0B-055-DN
1B	4.0	4.4	4.0	30	RM-GMA-1B-040-DN
1S	4.5	4.9	4.5	30	RM-GMA-1B-045-DN
1K	5.4	6.0	5.4	30	RM-GMA-1B-054-DN
1F	6.5	7.0	6.5	30	RM-GMA-1B-065-DN
	5.0	5.5	5.0	36	RM-GMA-2B-050-DN
2B	6.0	6.5	6.0	36	RM-GMA-2B-060-DN
2K	7.0	7.7	7.0	36	RM-GMA-2B-070-DN
	7.8	8.8	7.8	36	RM-GMA-2B-080-DN
	9.0	9.9	9.0	36	RM-GMA-2B-090-DN
3S	4.5	5.2	4.5	42	RM-GMA-3B-050-DN
3B	6.0	6.9	6.0	42	RM-GMA-3B-060-DN
3K	7.0	7.9	7.0	42	RM-GMA-3B-070-DN
	8.0	8.9	8.0	42	RM-GMA-3B-080-DN
	9.0	10.0	9.0	42	RM-GMA-3B-090-DN
1P	2.7	3.9	3.9	30	RM-GMA-1P-039-DG
	4.0	5.2	5.2	30	RM-GMA-1P-052-DG
	5.2	6.5	6.5	30	RM-GMA-1P-065-DG

Note:

The last letter «G» of the part number indicates the gray colour of the bend relief. For ordering a bend relief with another colour, and replace the letter «G» by the letter of the required colour.

A bend relief made from thermoplastic polyurethane elastomer can be fitted over RAYMO plugs and receptacles that are supplied with nut for fitting such bend relief. They are available in nine different colours match with the GRA insulating washers. Each color has the code listed below.

Code	Colour
A	Blue
B	White
G	Gray
J	Yellow
M	Brown
N	Black
R	Red
S	Orange
V	Green

RM